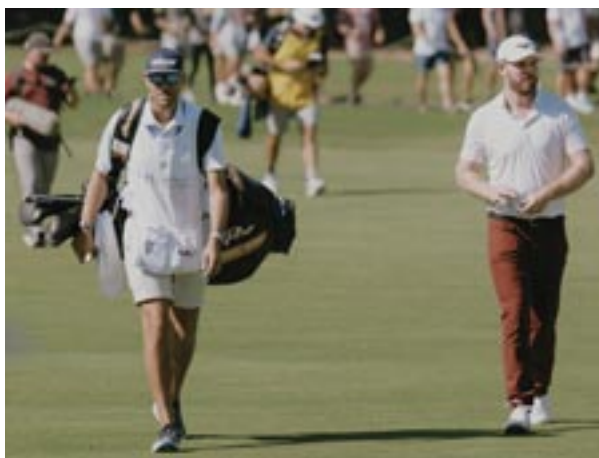


THE OAHU **Concierge**

CELEBRATING 25 YEARS... KEEPING THE HOSPITALITY INDUSTRY INFORMED SINCE 1998

The Sony Open in Hawaii Where Every Swing Tells a Story

This year is going to be a weird one for the Sony Open. There is no defending champion for the first time since the event's modern-day inception as the Hawaiian Open in November 1965. In a



Last year's winner Grayson Murray with his caddie Jay Green in happier times. Photo courtesy of The Sony Open in Hawaii.

tragic turn of events, defending champion Grayson Murray took his own life earlier this year. In a statement from the organizers, the Sony Open states, "We are grateful and blessed to have witnessed Grayson's inspiring win and personal testimony of faith at Waialae this past January. He won our tournament and our hearts. We extend our aloha and prayers for God's grace, peace, and comfort to surround Grayson's family, loved ones, friends, and the PGA TOUR ohana."

Most things will seem the same: the course, the weather, familiar participants, the Skyboxes, and the excitement, but Grayson's absence will undoubtedly hang over this year's tournament, and Sony will do their best to honor him throughout the week.

The Sony Open will be held January 6-12 at the Waialae Country Club. The tournament attracts some of the world's top golfers, including big-name PGA stars and international pros. While the names of the 144 golf pros had not been released at press time since the Sony Open is the first full-field event of the TOUR's new season, expect a handful of fresh faces, rookies to the TOUR, making their season start alongside veteran pros.

The tournament begins with a blessing at 9:30 a.m. on January 6, followed at 10

a.m. by the Dream Cup Pro-Am, a Sony invitation-only Pro-Am event reserved for Sony guests on Monday. On Tuesday, January 7, professional practice rounds begin at 8 a.m. and continue all day. Ticketed

events start the next day as the Official Pro-Am kicks off Wednesday at 7 a.m. at Waialae for Sony execs, VIP guests, celebrities, and top sponsors (last year, Jamie Foxx and Jensen Ackles were among the Sony celebs teeing it up at the Official Pro-Am). The 1st round of the Sony Open kicks off on Thursday at 7 a.m. and continues each day through Sunday when the final round occurs.

Tickets for the Sony Open in Hawaii are on sale now and available online. Admission is free on Monday, January 6, and Tuesday, January 7. A Season Badge priced at \$100 per person is good for weeklong admission. Daily Tickets are \$40 per person. Children 15 and under get in for free when accompanied by an adult ticket holder. Sweet 16 Chalet Hospitality Passes are still available and priced at \$265 (Thursday or Friday) and \$295 (Saturday or Sunday).

What is the Sweet 16 Chalet Hospitality Tent, you ask? It's an upscale tent on the 16th green featuring cuisine by G. Lion Hawaii restaurants La Vie, Hy's Steakhouse, and Quiora. Tickets include tournament admission and access to the Sweet 16 Chalet for the day and one G. Lion Hawaii Prime Box filled with items such as Prime Rob, Lobster Rolls, Beef Tenderloin, Fresh Fish and more, soft

Continued on page 2.

CIRQUE DU SOLEIL **'AUANA**



'Auana combines Cirque du Soleil artistry with local culture and Merrie Monarch quality hula and the end result has people raving. All photos courtesy of 'Auana.

Auana has arrived, making a big splash into Oahu's entertainment scene. We got hundreds of you into the first two dress rehearsals of the show, and the response was overwhelming—it's a hit! The show is a Hawaii-inspired production featuring a jaw-dropping cast of Cirque acrobats, comedians, and artists, blended with local musicians, singers, and hula dancers. It tells the mo'olelo (stories) of Hawaii, and the result is spectacular.

The idea of bringing a Cirque du Soleil show started about five years ago when Outrigger Executive Vice President & Chief Commercial Officer Sean Dee was thinking of a show to go into the Magic of Polynesia space, which had been empty since the show closed in March of 2021. He reached out to former colleagues in Vegas, and it turns out they were tossing around the idea of bringing a show to Hawaii – and the idea was born and progressed from there.

Continued on page 4.

TABLE OF CONTENTS	
Yada Yada Yada	2
Newsflash	3
Paparazzi: Twas the Light Before Christmas	6
E Pili Kakou	8-12
Chef's Corner: Dean & DeLuca's Daisuke Shimauchi	13
Calendar	14-17
Paparazzi: International Market Place	17
Paparazzi: Cirque du Soleil's 'Auana	18
That's Entertainment / Concierge Card	19



Aloha 2025

Happy New Year! I hope everyone had a safe and happy holiday season. 2025 has arrived, and things keep ramping up. At long last, 'Auana has opened and is getting rave reviews, and the Sony is coming to town, and we all know what that does, but in addition to that, surf's up, the Eddie may or may not go, there are new restaurants opening left and right. There are some big changes coming to the restaurant industry as well. Pesca at the Top of the I is moving. I don't know where and when it will reopen, but I understand that as of January 11, the restaurant space will operate as Empire Steak House. I expected to hear more details about that before we went to press, but the restaurant went radio silent on me the past few weeks. Nevertheless, the change should occur on the first of the month, so let me know if you can check it out.

We had a fantastic year of concierge events - they seem to get bigger and better as we move forward—Mahalo to those of you who make the time come time and again. Without your support, these events would not have continued, so I thank all of you who made the time to come - especially those who told me you were not coming. You guys are just as important as those that do make it. Communication is key. Just a reminder as we move forward into what should be another year of exciting events, please keep that communication up. When the capacity drops down for an event to a lower number than usual, I have to use the host's requirements and then my best guess as to how to come up with that magic number for them. The first thing I do when I have to cut is remove those of you who have either not responded to me or did not show up at the event before. Also, please note that every event will have a few hotels that get a bit more love for first dibs on extra seats or allow a few more guests based on their location or importance to whoever is hosting. I'm not playing favorites; the host is! It worked well this year, so let's keep it going as I move forward in my 25th year of putting out *The Oahu Concierge* for you. I can't wait to see what this year brings us. You guys really do make my job fun. Mahalo!!

Yada Yada



Aira Ono

Congratulations go out to **Aira Ono** for her recent promotion to Guest Services Manager at the *Outrigger Waikiki Beachcomber*. Aira began her hospitality career with Outrigger in 2014 as a front desk agent at the Outrigger Reef Hotel. She moved over to the Beachcomber in 2023 as the Front Desk Supervisor, and after demonstrating outstanding growth and development, she was promoted within the year. **Levi Tinker** has also joined the team at the Beachcomber as the new Showroom Manager for *Cirque du Soleil 'Auana*. In this role, Levi will oversee all aspects of guest and host relations for the showroom operations to ensure exceptional guest experiences. He will also be responsible for host development and act as the liaison between the Outrigger Hospitality Group and Cirque du Soleil management teams. A newbie to Oahu, Levi moved



Noah Elgin

here in 2023 after speeding more than two decades in Hollywood as the general manager of the iconic Grauman's Chinese Theatre. • Congrats to **Noah Elgin**, who has been promoted to Area Director of Customer Service. He will continue to oversee the entire Customer Service Experience at the *International Market Place*, but has now added IMPs sister properties at the Beverly Center in Los Angeles, California and City Creek Center in Salt Lake City, Utah to his responsibilities. Way to go! • A belated welcome to **Craig A. Waterman** who was named General Manager of the *Outrigger Reef Waikiki Beach Resort*. He brings with him more than two decades of hospitality experience across all aspects of resort operations, renovations, openings, sales more, and most recently served as the Area General Manager for Davidson Hospitality in Long Branch, New Jersey.

The Sony Open

Continued from page 1.

drinks, and two glasses of wine or beer. The complete menu can be found online.

Free admission is extended to active duty and retired military service members, reserves, and dependents who present a valid military ID. Free admission is extended to veterans through the Veteran Tickets Foundation. Veterans can request tickets online at vettix.org.

The Sony Open brings a lot of traffic to the community, so let's talk about parking. There is none at the Waialae Country Club or the Kahala Hotel, so anyone planning on heading to the greens will need to park in one of two designated public parking areas at Hunakai Park on Monday - Sunday and a secondary lot at Kahala Community Park from Thursday through Sunday to handle the overflow. A complimentary shuttle will take people to and from the parking lots to the tournament. This might be a good day to leave the car at the hotel and hop onto one of the dedicated shuttles provided by Waikiki Trolley to shuttle people to and from the Sony Open to Waikiki for a minimal fee. Find the schedule at waikikitrolley.com. Better yet, grab a bike. As one of the Sony Open's many sustainable practices, they offer Free Bike Valet service at the Open.



2023 winner Si Woo Kim lining up at Waialae's famous 16th hole. Photo courtesy The Sony Open

Valet your bicycle at 4997 Kahala Avenue on the grassy knoll before the main entrance. Sony Electronic will donate \$10 to the Hawaii Bicycling League for every bicycle using the complimentary bike valet service when traveling to the Sony Open in Hawaii. This service is available Thursday – Sunday from 8 a.m. – 5 p.m.

Lastly, please remember that Sony has a strict bag policy at the gate. There is no bag check, so spectators will save themselves a lot of headaches by taking a few moments to read the policy before they head out to the tournament.

To read the tournament bag policy, see the course map, purchase tickets, or more, head to sonyopeninhawaii.com.

This article contains references to suicide. If you or someone you know is struggling, you are not alone, help is available. If you are experiencing a mental health crisis, please call the national suicide and Crisis Lifeline at 988 or visit their website at 988lifeline.org.

EXTRA EXTRA EXTRA *Newsflash*

TRICKED OUT ACCESSORIES HELPS VISITORS PHONE NEEDS

Many visitors coming to Hawaii can now pick up SIM cards with plans for up to 30 days. Plans are \$29 to \$59 and starts at 10GB of 4G/5G data with unlimited USA talk and text. International plans come with up to 10 calls and text in the plan. All plans are sold as unlimited data plans. They also offer phone repair, phone charging accessories, and their new best selling Hawaii license plate and koa phone cases. International Market Place.

HAWAIIAN MISSION HOUSES MUSEUM GETS ACCREDITATION

Hawaiian Mission Houses Historic Site and Archives has once again achieved accreditation by the American Alliance of Museums. This is the highest national recognition afforded to museums in the nation. Accreditation signifies excellence to the museum community, funders, to governments, outside agencies, and to the museum-going public. All museums must undergo a reaccreditation review at least every 10 years to maintain accredited status. Of the estimated 33,000 museums across the nation, roughly 1,100 are currently accredited. HMH is one of only five museums in Hawai'i to achieve accreditation, including the Honolulu Museum of Art, Lyman Museum, Bishop Museum, and 'Iolani Palace. missionhouses.org.

VINTAGE BOOKS HAWAII OPENS IN FORMER 3660 LOCATION

Tucked away behind the vintage facade of a charming bookstore is a hidden speakeasy in the former 3660 on the Rise location. Chef Stephen Toyofuku, who made waves in Seattle's culinary scene, has returned to Hawaii to unveil a new dining experience at Vintage Books Hawaii, with a cocktail-forward menu by Jen Ackrill. The Private Collection offers a curated experience with thoughtfully crafted dishes. vintagebookshawaii.com.

KA MAKANA ALI'I WELCOMES MISSING POLYNESIA

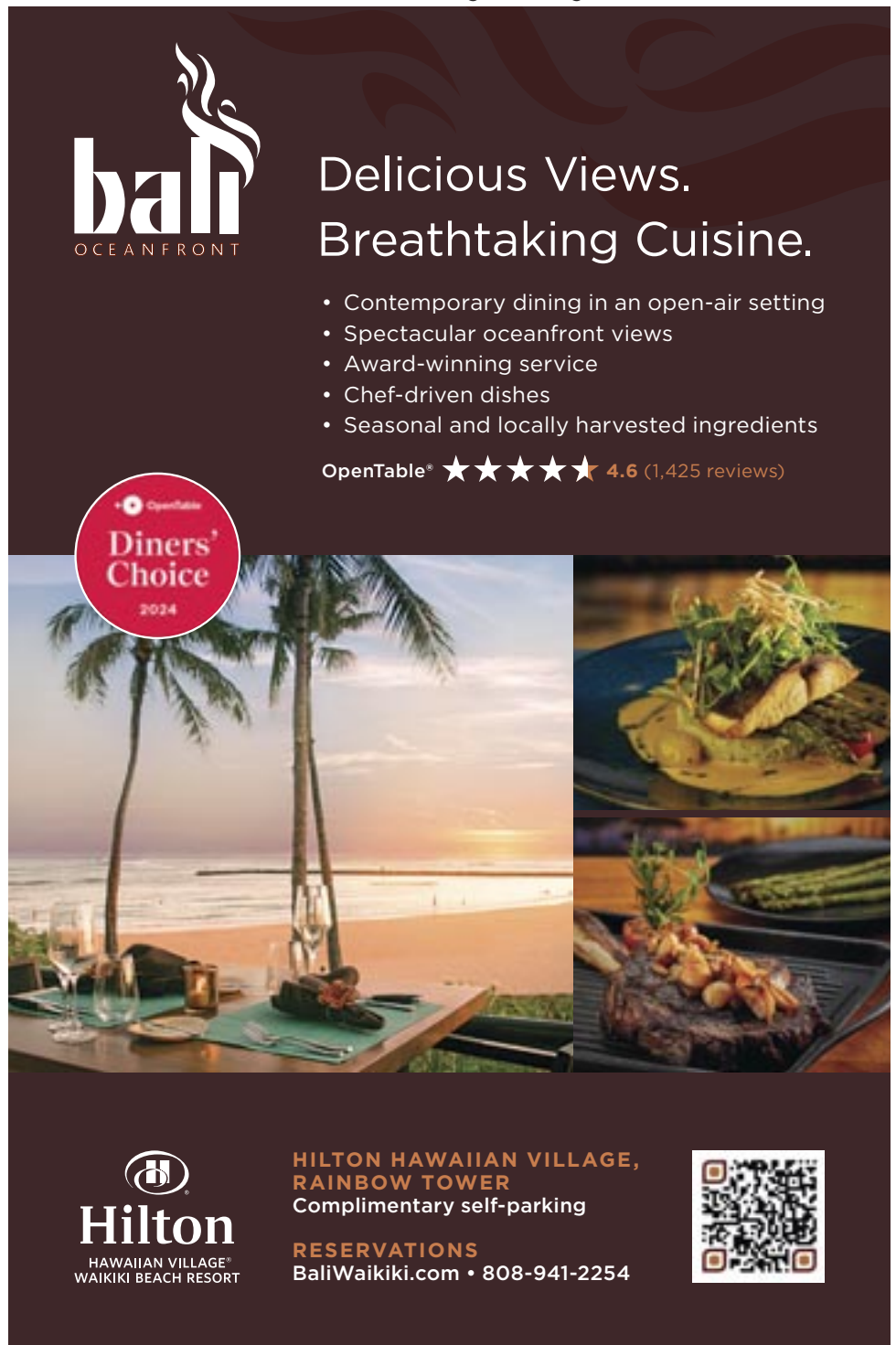
Ka Makana Ali'i's newest store has a passion for Polynesian fashion and décor. Established in 2001, Missing Polynesia is a locally family-owned and operated brand carries a vibrant line of Polynesian products for men and women inspired by cultural art and modern influences. This 2nd location, located in the Macy's wing across from Zales, is already a hit in the community. missingpolynesia.com.

THE SUNRISE SHACK OPENS 6TH LOCATION AT THE TWIN FIN

The Sunrise Shack was founded on Oahu's North Shore by a group of professional surfers with a mission to spread health and positivity through food. Known for its iconic bright yellow shacks, it serves organic coffee, smoothie bowls, and snacks made with superfoods and sustainably sourced ingredients. Their newest location is at The Twin Fin Hotel with a storefront on Kalakaua Avenue. sunriseshackhawaii.com.

CELEBRATE THE NEW YEAR WITH MOCHI POUNDING

Pounding mochi to celebrate the New Year is a popular Japanese holiday tradition. A way of welcoming the New Year and ensuring good luck and longevity for the years to come, Margotto owner Robert Hori takes this tradition seriously. From January 1 - 7, guests can join the traditional mochi pounding process from 7 to 7:30 p.m. at Margotto Hawaii. Call (808) 592-8500 or go to margotto-hawaii.com.



bali
OCEANFRONT

Delicious Views. Breathtaking Cuisine.


- Contemporary dining in an open-air setting
- Spectacular oceanfront views
- Award-winning service
- Chef-driven dishes
- Seasonal and locally harvested ingredients

OpenTable® ★★★★★ 4.6 (1,425 reviews)

Diners' Choice
2024

**HILTON HAWAIIAN VILLAGE,
RAINBOW TOWER**
Complimentary self-parking

RESERVATIONS
BaliWaikiki.com • 808-941-2254



PARK WEST FINE ART MUSEUM & GALLERY

Waikiki Beach Walk, Honolulu
808-859-4871 • parkwesthawaii.com



Any client you refer will get

10% off their purchase*

if they mention the hotel and concierge that referred them

Join us every Friday

from 4 p.m. to 9 p.m. for
Champagne Fridays with
live painting by Cam Rose.

PARK WEST GALLERY

Featuring new and local artists as well as several of the most influential art world masters, including:

Albrecht Dürer, Rembrandt van Rijn, Francisco Goya, Pablo Picasso, Pierre-Auguste Renoir, Marc Chagall and Joan Miró.

*Terms and conditions apply

'AUANA

Continued from page 1.

When I first learned that Cirque du Soleil was coming to Hawai'i, I was excited but puzzled. People don't come to Hawaii to see a Cirque show. They come for the Hawaiian experience, the culture, the dance, the stories. Cirque was something people went to see in Vegas. I didn't see the correlation. But the folks at Outrigger and Cirque du Soleil were way ahead of me on that line of thought. They put an incredible amount of time and energy into putting together an elite group of kanaka to make sure that this show paid an enormous amount of respect to Hawaii and its culture and wove together a show that culminates with a beautiful story of Hawaii through the lens of Cirque du Soleil. From the slew of comments after the show, the audience agreed, calling the show impressive, phenomenal, spectacular, and most saying it far surpassed everyone's expectations.

Neil Dorward, who had directed several Cirque productions, was in Hawaii on holiday when he got the call to check out a space they had been thinking of and meet with Sean Dee. Sean introduced him to Dr. Aaron J. Salā, and they hopped into a car to drive around the island, sharing stories and history. They ended up at the Bishop Museum. Sala said, "I think that was a catalytic moment for the team because it opened their experience up and showed that we had made a concerted effort to honor the place. (Waikiki)"

Neil tried to soak in and digest everything he had learned in the cultural immersion he had gone on, and that day 'Auana was born. Dorward, Co-Creator and Director, said, "First and foremost, I wanted to make a show that the community was proud of, and I really wanted to honor the community." To



achieve that goal, they put together an incredible cultural team to oversee every aspect of the show through a Hawaiian cultural lens, while Cirque focused on integrating world-class entertainment and performers to create this unique and exquisite show that hits all the right notes on both levels.

Leading the team is Dr. Salā, hired on as the Cultural Creative Producer. Hard at work on FestPAC at the time, he had been focusing his energies on reestablishing Hawaii as part of the Pacific while presenting Hawaii as part of the Pacific and introducing the Pacific to the potential of Hawaii, he said the opportunity was right in line with what he was working on. "Everything sort of culminates into the next thing, so you know, looking at the quality of the kinds of performance that are happening in the Pacific, looking at how contemporary Pacific performers engage with notions of their own conditionality is something



Martha Seroogy, Senior Director of Show Operations & Revenue leads a panel discussion with Neil Dorward, Dr. Aaron J. Salā, Manaola Yap, Hiwa Vaughn, Composer Evan Duffy and Dr. Keao NeSmith.

that I think colored the way we thought about this," said Sala. To that end, they wanted to ensure that all elements were culturally appropriate. That meant building a team of cultural advisors to oversee the show's production. In addition to Salā, the team includes renowned fashion designer Manaola Yap

as Costume Designer, Merrie Monarch-winning Kumu Hula Hiwa Vaughan as Choreographer, and Renowned linguist Dr. Keao NeSmith worked hand in hand with composer Evan Duffy to artfully share the beauty of 'Auana's story through lyrical storytelling all in 'ōlelo Hawai'i.

"I'm so proud of what we have done," says Dr. Sala. "Hawaii has been sun, sand, and surf for a long time and always will be, but this particular production affords us an opportunity to dig several layers deeper than sun, sand, and surf. We're telling profound stories through profound performance. There's so much Hawaii woven into every fabric of every layer of the show."

The name stems from a loose translation meaning to wander, veer off the beaten path, or embark on a journey. After both teams met with community cultural advisors, the name 'Auana was selected to foreshadow the adventure audience members will take part in, traveling through Hawai'i's mo'olelo and stylized depictions of historic events.

The story follows the journey of 'Auana's resident clown or trickster, Salvador (Sal) Salangang. He walks in, comes across the musician, and falls asleep to the beautiful sound. The following dream sequence takes the audience on a journey as he encounters various parts of Hawai'i's history as depicted through song, dance, and the extraordinary acrobatic acts Cirque is so famous for always blending with hula and mele. The attention to detail, from the costumes to the dance to the lyrics, always returns the audience to this history of Hawaii, creating a playground of humility and open-mindedness for all. Throughout the show, Sal threads the audience through these different elements until they all come together at the end. Sal has worked with Dorward for about 15 years and has played the lead role and guide in several productions in the past. When the show came to be,



Dorward knew Sal had the talent to lead the audience through this journey. To find out that Sal was born and raised in Hawaii made the decision even easier. "To realize he's coming back home was an extra special message that I wanted in the show," said Dorward. Sal gets emotional when he talks about his full-circle journey. "I was born at Kapiolani Hospital and lived on Fern Street. When I was 7, my parents divorced, and it was school in Texas with my mom and summers here with Dad. We hung out in Waikiki, at Walls, and seeing movies at the theatre next door." He couldn't be happier moving back to. After all these years, Oahu is doing what he loves.

In addition to this former resident of Oahu, about 35% of 'Auana's cast and crew consists of local talent both on stage and behind the scenes. The show takes audience members on a thrilling adventure filled with music, hula, mo'olelo, and Cirque's signature high-flying acrobats, jugglers, aerialists, sand artists, high-flying daredevils, and more at the new Outrigger Theatre inside the Outrigger Waikiki Beachcomber Hotel. The 20,000-square-foot theatre is unrecognizable from the one we all remember from Magic of Polynesia. The new 784-seat state-of-the-art theatre is far more intimate than any other Cirque show you might have seen before, and there isn't a bad seat in the house. A ton of action takes place in the aisles, on all sides, and above your head throughout the show, offering an up-close and personal view to those in every seat. We enjoyed the show a bit more the second time we went when we had seats further back from the stage in the middle. Heads up, there is a hilarious bit of audience participation in the middle of the show. Sal chooses four 'volunteers' from those close to the aisle on both sides of the floor seats, so book your loved one in or near an aisle seat to boost their chances of being selected (although there is no way of knowing which side he will choose from each show,) or away from the aisles if they really don't want to go onstage.

'Auana is also offering a VIP experience

Continued on page 7.



NĀ Lei ALOHA

A WAIKĪKĪ LŪ'ĀU



LOCATED AT THE HYATT REGENCY
WAIKĪKĪ BEACH RESORT AND SPA

Join us for an immersive cultural experience about the art of lei, with stories shared through authentic Hawaiian music and hula.



CELEBRATING HAWAII'S
UNIQUE EXPRESSION OF LOVE



BOOK TICKETS NOW AT NALEIALOHA.COM

INQUIRIES: 808-897-2906

MAHALO FOR SUPPORTING REGENERATIVE TOURISM
AND UPLIFTING OUR LOCAL COMMUNITY.

KILOHANA
COLLECTIVE

COUNCIL for
NATIVE HAWAIIAN
ADVANCEMENT

Twas the Light Before Christmas

The Hawaii Convention Center kicked off the season right by allowing us to check out the latest immersive exhibit before it opened to the public, and it did not disappoint! Giant ornaments and sleighs ready to sit in for pics, enormous snow globes people could crawl and play in, and an immersive experience in the last room where families could sit, snack, and enjoy the light experience around them. Can't wait to see what they do next year!



ORIGINAL

MAGOO'S PIZZA

EST. 1967

**HAWAII'S FAVORITE
ISLAND-STYLE
PIZZA, SUBS &
SALAD**

**NOW OPEN DAILY FOR
LUNCH & DINNER
11am - 9pm**

**HAPPY HOUR DAILY
11am - 5pm**

**ORDER TAKEOUT &
DELIVERY ONLINE**

<http://OriginalMagoosPizza.com/Order>

**3579 Waialae Avenue
(between 11th & 12th Ave)**



**NO HU HU
CALL MAGOO'S
808.949.5381**

AUANA

Continued from page 5.



to guests before the show in a new open-air lounge designed by Manaola Yap at Maui Brewing Company. Guests will enjoy unlimited access to an array of locally crafted beers, wines, seltzers, and 'Auana-inspired craft cocktails and menu, as well as an opportunity to meet and greet several artists from the show and learn more about the show through exclusive video content during a 90-minute reception before heading to the show through an exclusive entrance to the theater from the VIP Lounge. Tickets are \$149, including all taxes and fees.

As 'Auana is expecting the majority of its guests from the surrounding area, there is a downside for locals or visitors coming in from outside of Waikiki: the show does not offer any parking validation. So those of you coming into Waikiki to see the show need to think about parking in advance. The show recommends ride-share or nearby street parking. The International Market Place and the Royal Hawaiian Center will give you one free hour with a \$25 purchase and the next 2-hours at a discounted rate. Be advised the rates jump quickly after that, so plan accordingly. However, if you're going to head into Waikiki for a show, you might as well make a night of it and grab dinner before or after the show. Fortunately, a few restaurants have stepped in to handle that pesky parking problem for you. Suggest your guests stop for dinner before or after the show at either Stripsteak Waikiki or Basalt Waikiki. Both restaurants are now offering 4-hours of complimentary parking to guests who present their same-day ticket (to any show, not just Cirque) with their order. Guests at Stripsteak Waikiki are eligible to receive 4-hours of free parking and a complimentary appetizer or dessert with the purchase of an entrée. Call 896-2545 for reservations. BASALT is also getting into the mix for a limited time, offering guests 4 hours of validated self-parking at Hyatt Centric Waikiki Beach with a minimum purchase of \$50 through January 31. The offer is available

only for ticketed shows in Waikiki the day you see it. Tickets must display the date of show. Call 923-5689 for reservations.

The work and care between Outrigger and Cirque du Soleil is evident. "We really appreciate [everyone's] hard work, and most importantly, the cultural creative team led by Aaron that worked diligently with Neil and the entire team to create a completely original show about our beautiful home of Hawaii, but told through the lens of Cirque du Soleil," says Sean Dee. "We hope audiences of visitors and kama'āina will enjoy it for years to come."

Dorward agreed. "More than anything, this show is a celebration of the spirit of

Hawai'i through the lens of Cirque du Soleil. Thanks to this team, we have created this spectacular world for audiences to enjoy, but more importantly, for the community of Hawai'i to be proud of."

'Auana offers two shows a night at 5:30 and at 8:30 p.m. Wednesdays through Sundays. The show is dark on Monday and Tuesday. Ticket prices start at \$85 including taxes and fees, and there is a 30% off discount for kama'aina, all easily found on their website. Groups of 10 or more get a discount rate via email at hawaiiisales@cirquedusoleil.com.

For more information head to their website at cirquedusoleil.com/auana.

Hawai'i's Premier Marine Park Attraction

Sea Life **60TH**
PARK
HAWAII
Celebrating 60 Years of
Marine Life Conservation, Education and Care.



Make Memories One Animal Encounter at a time with Dolphin Aloha, Sea Lion and Hawaiian Reef Shark Experiences at Sea Life Park.



Website



Instagram

41-202 Kalaniana'ole Highway #7 • Waimānalo, HI 96795
808-259-2500 | SeaLifeParkHawaii.com

Performers & times subject to change

Let's be Together...

DINING ▶ ENTERTAINMENT ▶ PAU HANA ▶ EAT ▶ DRINK ▶ BE MERRY ▶ HAPPY HOUR ▶

MONDAY

- 100 Sails at the Prince Waikiki** 944-4494
Live Contemporary Hawaiian
Kai Malo'o 6-8pm
- Barefoot Beach Café at Queen's Beach** 924-2233
Live Contemporary & Hawaiian
The Barefoot Boys 5:30-8:30pm
- Duke's Canoe Club Waikiki** 922-2268
Live Contemporary Hawaiian
Grace Welton (or J. Lyn) 4-6pm
Bryan & Halekahu 7-9:30pm
Ellsworth Simeona 9:30-12am
- Hard Rock Cafe** 955-7383
Contemporary Rock or Production duo
ODDible 8-10pm
- Heydey at the White Sands** 475-6864
Contemporary Rock
Laupepa Letuli 7-9pm
- House Without a Key** 923-2311
Hawaiian music & hula by Miss Hawaii '23 Star Thurston
Pa'ahana Trio 5-8pm
- Hula Grill** 923-4852
Live Contemporary Hits
Ben Kama 12-2pm

- Kani Ka Pila Grille** 924-4992
Hoku Award Winning Hawaiian musicians
Sean Na'auao 6-9pm
- Lewers Lounge** 923-2311
Jazz Pianist
Johnny Kukui (1/6-Kamaka Camarillo) 8-10:30pm
- Mahi'ai Table** 670-2778
Live Contemporary
Jenna Keala (1/13-Tehani Whittington) 5-8pm
- Mahina & Sun's** 923-8882
Monday Vibes on the Lanai
Brian Keith 6-8:30pm
- Mai Tai Bar at the Royal Hawaiian** 923-7311
Live Contemporary Hawaiian
Brad Kawakami 11am-2pm
Mark Caldeira 8-10pm
- Maui Brewing Company** 843-2739
Live Contemporary Hawaiian
Randy Allen 8:30-10:30pm
- Merriman's Honolulu** 215-0022
Live Slack Key guitarist
Ruth & Norm Foster 5:30-7:30pm
- Monkeypod Kitchen Ko Olina** 381-4086
Live music 3x a day including from 12:30 - 2 p.m.
Kree and Malik 3:30-5pm
Sienna Souza 7-9pm
- Monkeypod Kitchen Waikiki** 900-4226
Live music 3x a day including from 12:30 - 2:30 p.m.
Shawn Garnett 3:30-5pm
Dustin Park 7-9pm
- Pikos Kitchen & Bar** 923-2032
Live Contemporary Hits
Christian Yrizarry 5:30-8:30pm
- Rumfire** 921-4600
Live Contemporary Hits
Dave Watanabe 6-9pm
- Signature Prime Steak** 949-3636
Contemporary Pianist in the bar
Keith Montross 6-9pm
- Splash Bar at the Sheraton Princess Kaiulani** 921-4600
Live Contemporary Hawaiian
David Aquino 6-9pm
- Swell at the Alohilani** 294-4108
Solo Contemporary Guitarist
Kamuela Kahoano 6-9pm
- The Beach Bar at the Moana Surfrider** 922-3111
Live Contemporary Hawaiian
Jesse Kuikahi 3:30-6:30pm
Johnny Valentine (1/20-Chris Luke) 7-10pm
- The Edge at the Sheraton** 921-4600
Live Hawaiian Music
Stephen Inglis 1-4pm
AJ Keolanui 4:30-7:30pm
- The Point Sunset Pool Bar at Turtle Bay** 293-6000
Live Contemporary Hawaiian with Fireknife Dancer

Kuhio Travis 5-8pm

TUESDAY

- 100 Sails at the Prince Waikiki** 944-4494
Live Contemporary Hawaiian
Cherie Duo 6-8pm
- Barefoot Beach Café at Queen's Beach** 924-2233
Backyard Hawaiian
Ben Kama 5:30-8:30pm
Shane Kainoa (or others) 6-9pm
- Duke's Canoe Club Waikiki** 922-2268
Live Contemporary Hawaiian
Walt Keale 4-6pm
Kailua Moon 7-9:30pm
Stephen Inglis 9:30-12am
- Eating House 1849 Waikiki** 924-1849
Live Contemporary Hawaiian
Kuhio Travis (or George Kuo) 4:30-6:30pm
- Hard Rock Cafe** 955-7383
Contemporary Rock
Sidney Spencer (or others) 8-10pm
- House Without a Key** 923-2311
Hawaiian music & hula by Miss Hawaii '24 Haley Kane
Delima Ohana 5-8pm
Puuhonua & Star Thurston (1/7) 5-8pm
- Hula Grill** 923-4852
Contemporary Rock
Kawika Kahiapo 12-2pm
- Kani Ka Pila Grille** 924-4992
Highlighting the Henry Kapon Foundation "On the Rise" artist series the first Tuesday of every month.
Kosuke 5-7pm
Kala'e Camarillo 6-9pm
- L.B.L.E. Lounge** 922-0811
Live Acoustic - Industry Night
Jenna Keala 6-9pm
- Lewers Lounge** 923-2311
Jazz Pianist
Tommy James 8:30pm-12am
- Mahi'ai Table** 670-2778
Live Contemporary
Keoni Ku (1/7-Cory Oliveros) 5-8pm
- Mahina & Sun's** 923-8882
Electrifying Acoustic on the Lanai
Laupepa Letuli & Steven 6-8:30pm
- Mai Tai Bar at the Royal Hawaiian** 923-7311
Live Contemporary Hawaiian
Liam Moleta 11am-2pm
YOZA 6-9pm
- Maui Brewing Company** 843-2739
Live Contemporary Hawaiian
Mike Piranha 8:30-10:30pm
- Merriman's Honolulu** 215-0022
Live Contemporary
John Kema 5:30-7:30pm
- Monkeypod Kitchen Ko Olina** 381-4086

STARTING AT
\$68

SAVOR OUR RUTH'S CLASSICS MEAL
WITH STARTER, ENTREE, SIDE
AND DESSERT



AVAILABLE DAILY FROM 4-6 PM
Oahu: Waterfront Plaza and Waikiki Beach Walk
Maui: The Shops at Wailea
RUTHSCHRIS.COM

E Pili Kākou

DINING ▶ ENTERTAINMENT ▶ PAU HANA ▶ EAT ▶ DRINK

Live music 3x a day including from 12:30 - 2 p.m.

Pono 3:30-5pm
Soul Purpose 7-9pm

Monkeypod Kitchen Waikiki 900-4226

Live music 3x a day including from 12:30 - 2:30 p.m.

Tiare and Keala 3:30-5pm
John Akapo 7-9pm

Pikos Kitchen & Bar 923-2032

Live Contemporary Hits

Drew Henmi (1/14-Kamaka Camarillo) 5:30-8:30pm

Roy's Hawaii Kai 396-7697

Live Local Contemporary

Mike Tulba 4:30 - 6:30pm

Rumfire 921-4600

Live Contemporary Hits

Christian Yrizarry 6-9pm

Signature Prime Steak 949-3636

Contemporary Pianist in the bar

Keith Montross 6-9pm

Splash Bar at the Sheraton Princess Kaiulani 921-4600

Live Contemporary Hawaiian

Mark Caldeira 6-9pm

The Beach Bar at the Moana Surfrider 922-3111

Live Contemporary Hawaiian

Stephen Inglis (or others) 3:30-6:30pm

Alex Oasay 7-10pm

The Edge at the Sheraton 921-4600

Live Hawaiian Music

YOZA 1-4pm

Johnny Kukui (1/7-Kamaka Camarillo) 4:30-7:30pm

The Point Sunset Pool Bar at Turtle Bay 293-6000

Live Contemporary Hawaiian with Fireknife Dancer

Danielle Parente 5-8pm

WEDNESDAY

100 Sails at the Prince Waikiki 944-4494

Live Contemporary Hawaiian

Mike Tulba 6-8pm

Barefoot Beach Café at Queen's Beach 924-2233

Island Vibes

Danny Galura 5:30-8:30pm

Duke's Canoe Club Waikiki 922-2268

Live Contemporary Hawaiian

Keoni Ku 4-6pm

Taulia Lave 7-9:30pm

Alika Souza 9:30-12am

Hard Rock Cafe 955-7383

Contemporary Rock

Cassie and the... 8-10pm

House Without a Key 923-2311

Hawaiian music & hula by Miss Universe '97 Brook Lee

Pa'ahana Trio 5-8pm

Hula Grill 923-4852

Contemporary Rock

Ronson Asuncion 12-2pm

Kani Ka Pila Grille 924-4992

Hoku Award Winning Hawaiian musicians

Ei Nei 6-9pm

Lewers Lounge 923-2311

Jazz Pianist

Tommy James 8:30pm-12am

Mahi'ai Table 670-2778

Live Contemporary

Kai Duhaylsod 5-8pm

Mahina & Sun's 923-8882

Soulful Guitar on the Lanai

John Akapo 6-8:30pm

Mai Tai Bar at the Royal Hawaiian 923-7311

Live Contemporary Hawaiian

Stephen Inglis 11am-2pm

Johnny Valentine (or Danielle Parente) 6-9pm

Maui Brewing Company 843-2739

Live Contemporary Hawaiian

Scott Magz & Ethan Nash 8:30-10:30pm

Merriman's Honolulu 215-0022

Live Contemporary

Kamaka Camarillo 5:30-7:30pm

MINA's Fish House 679-0079

Live Contemporary Hits

Kamuela Kahoano 6-9pm

Moani Waikiki 466-2629

Contemporary Hawaiian/Country Music

AJ Keolanui 7-10pm

Monkeypod Kitchen Ko Olina 381-4086

Live Contemporary 3x a day including from 12:30 - 2 p.m.

Chris Murphy 3:30-5pm

Izik 7-9pm

Monkeypod Kitchen Waikiki 900-4226

Live music 3x a day including from 12:30 - 2:30 p.m.

Jasmin Nicole 3:30-5pm

Chante 7-9pm

Pikos Kitchen & Bar 923-2032

Live Contemporary Hits

David Aquino 5:30-8:30pm

Rumfire 921-4600

Live Contemporary Hits

Jesse Kuikahi 6-9pm

Signature Prime Steak 949-3636

Contemporary Pianist in the bar

Pierre Grill 6-9pm

Splash Bar at the Sheraton Princess Kaiulani 921-4600

Live Contemporary Hawaiian

Brad Kawakami 6-9pm

Swell at the Alohilani 294-4108

Solo Contemporary Guitarist

Eddie Somera 5:30-8:30pm

The Beach Bar at the Moana Surfrider 922-3111

Live Contemporary Hawaiian

Alika Souza 3:30-6:30pm

Simple Souls (or Keahi Delovio) 7-10pm

The Edge at the Sheraton 921-4600

Live Hawaiian Music



MARA

LOCAL FARE.
MEDITERRANEAN FLAIR

BREAKFAST
DAILY | 6:30AM-11AM

BRUNCH
SAT & SUN | 11AM-3PM

LUNCH
MON-FRI | 11AM-3PM

DINNER
DAILY | 5PM-10PM

PAU HANA
MON-FRI | 4PM-6PM

LIVE MUSIC
WED & FRI | 6PM-9PM

BAR & LOUNGE
DAILY | 11AM-11PM

3 Hour Complimentary
Valet Parking

Any Guest Referred by Concierge
will Receive MARA's
VIP EXPERIENCE

When making your guests' reservation
please provide your name & company name

Renaissance Honolulu Hotel & Spa
1390 Kapiolani Blvd

RESERVE TODAY
MARAHONOLULU.COM
[@MARA_HONOLULU](https://www.instagram.com/MARA_HONOLULU)

Let's be Together...

DINING ▶ ENTERTAINMENT ▶ PAU HANA ▶ EAT ▶ DRINK ▶ BE MERRY ▶ HAPPY HOUR ▶

Kupu Dalire-Na'auao 1-4pm
Dave Watanabe 4:30-7:30pm

The Point Sunset Pool Bar at Turtle Bay 293-6000

Live Contemporary Hawaiian with Fireknife Dancer

Alex Oasay 5-8pm

The Veranda at the Kahala Hotel 739-8760

Live Contemporary

YOZA 6-9pm

Vintage 1901 at the Moana 921-4600

Contemporary Piano

David Swanson 6:30-10pm

THURSDAY

Barefoot Beach Café at Queen's Beach 924-2233

Live Contemporary & Hawaiian

Alika Souza 5:30-8:30pm

Duke's Canoe Club Waikiki 922-2268

Live Contemporary Hawaiian

Ben Kama 4-6pm

Henry Kaponi's New Artists "On the Rise" 7-9:30pm

Scott Magz 9:30-12am

Eating House 1849 Waikiki 924-1849

Live Contemporary Island Style

Shane Kainoa 5:30 - 8:30pm

Hard Rock Cafe 955-7383

Live Contemporary

House Without a Key 923-2311

Hawaiian music & hula by Miss Universe '97 Brook Lee

Walea 5-8pm

Hula Grill 923-4852

Contemporary Rock

YOZA 12-2pm

Kani Ka Pila Grille 924-4992

Hoku Award Winning Hawaiian musicians

Kawika Kahiapo 6-9pm

Lewers Lounge 923-2311

Jazz Pianist

Ethan Capone & Rocky Holmes 8:30pm-12am

Mahi'ai Table 670-2778

Live Contemporary

Alex Oasay 5-8pm

Mahina & Sun's 923-8882

Hawaiian Contemporary on the Lanai

Kelly Boy DeLima 6-8:30pm

Mai Tai Bar at the Royal Hawaiian 923-7311

Live Contemporary Hawaiian

Christian Yrizarry (1/16-Keoni Ku) 11am-2pm

Stephen Inglis (1/23- Chris Luke) 8-10pm

Maui Brewing Company 843-2739

Live Contemporary Hawaiian

Sean Cleland 8:30-10:30pm

Maui Brewing Kailua 518-2739

Live Contemporary Hawaiian

Grace Welton (or others) 6-8pm

Merriman's Honolulu 215-0022

Live Contemporary

Laupepa Letuli 5:30-7:30pm

MINA's Fish House 679-0079

Live Contemporary Hits

Jesse Kuikahi 6-9pm

Moani Waikiki 466-2629

Contemporary Island Music

Allan 7-10pm

Monkeypod Kitchen Ko Olina 381-4086

Live Contemporary 3x a day including from 12:30 - 2 p.m.

Kona Abergas 3:30-5pm

Chante Duo 7-9pm

Monkeypod Kitchen Waikiki 900-4226

Live music 3x a day including from 12:30 - 2:30 p.m.

Bella and Tehani 3:30-5pm

Javin Kai 7-9pm

Pikos Kitchen & Bar 923-2032

Live Contemporary Hits

Keoni Ku (1/9-Anthony Pfluke) 5:30-8:30pm

Roy's Hawaii Kai 396-7697

Live Hawaiian Contemporary

Hoku Zuttermeister 4:30 - 6:30pm

Rumfire 921-4600

Live Contemporary Hits

Brad Kawakami 6-9pm

Signature Prime Steak 949-3636

Contemporary Pianist in the bar

Grant Carvalho 6-9pm

Splash Bar at the Sheraton Princess Kaiulani 921-4600

Live Contemporary Hawaiian

Tad Jennings 3-6pm

Kaimi Hananoeau 6-9pm

Stripsteak 896-2545

Live Contemporary

Jason Laeha 6-9pm

Swell at the Alohilani 294-4108

Solo Contemporary Guitarist

Dominic Carlos 6-9pm

The Beach Bar at the Moana Surfrider 922-3111

Live Contemporary Hawaiian

Christian Yrizarry (or others) 3:30-6:30pm

Kaimi Hananoeau 7-10pm

The Edge at the Sheraton 921-4600

Live Hawaiian Music

Alika Souza 1-4pm

Chris Salvador 4:30-7:30pm

The Point Sunset Pool Bar at Turtle Bay 293-6000

Live Contemporary Hawaiian with Fireknife Dancer

Johnny Kukui (or Marty Saito) 5-8pm

The Veranda at the Kahala Hotel 739-8760

Live Contemporary

Jason Laeha 6-9pm

Vintage 1901 at the Moana 921-4600

Contemporary Piano

David Swanson 6:30-10pm

FRIDAY

Barefoot Beach Café at Queen's Beach 924-2233

Live Contemporary Hawaiian

The Art Kalahiki Band 5:30-8:30pm

Duke's Canoe Club Waikiki 922-2268

Live Contemporary Hawaiian

Maunalua 4-6pm

Kawaika Kahiapo 7-9:30pm

Randy Allen 9:30-12am

Eating House 1849 Waikiki 924-1849

Live Traditional Hawaiian

Eric Keawe 5:30 - 7:30pm

Hard Rock Cafe 955-7383

Live Contemporary

Psycho Tropical (or Close the Distance) 8-11pm

House Without a Key 923-2311

Hawaiian music & hula by Miss Hawaii '73 Kanoë Miller

Kapalama Trio 5-8pm

Hula Grill 923-4852

Contemporary Rock

Randy Allen 12-2pm

Kani Ka Pila Grille 924-4992

Hoku Award Winning Hawaiian musicians

Ka Hehena 6-9pm

Lewers Lounge 923-2311

Jazz Pianist

Maggie Herron & Dean Taba 8pm-12am

Mahi'ai Table 670-2778

Live Contemporary

Eddie Somera 5-8pm

Mahina & Sun's 923-8882

Slack Key on the Lanai

Dustin Park 6-8:30pm

Mai Tai Bar at the Royal Hawaiian 923-7311

Live Contemporary Hawaiian

Brandon Serrano 11am-2pm

Johnny III 6-9pm

Maui Brewing Company 843-2739

Live Contemporary Hawaiian

Keith Batlin (or Deah & Duva) 8:30-10:30pm

Maui Brewing Kailua 518-2739

Live Contemporary Hawaiian

Randy Allen (or others) 6-8pm

Merriman's Honolulu 215-0022

Live Contemporary

Matt Cockey 3-5pm

Stephen Harris 5:30-7:30pm

MINA's Fish House 679-0079

Live Contemporary Hits

Jenna Keala 6-9pm

Moani Waikiki 466-2629

Traditional Hawaiian Tri

Keolu 6-9pm

Monkeypod Kitchen Ko Olina 381-4086

E Pili Kākou

DINING ▶ ENTERTAINMENT ▶ PAU HANA ▶ EAT ▶ DRINK

Live Contemporary 3x a day including from 12:30 - 2 p.m.

Tehani and Bella 3:30-5pm
John Akapo 7-9pm

Monkeypod Kitchen Waikiki 900-4226

Live music 3x a day including from 12:30 - 2:30 p.m.

The Mauve 3:30-5pm
Izik 7-9pm

Original Magoos Pizza 949-5381

Live Contemporary Hawaiian

Ernie Kanoa 5:30-8:30pm

Pikos Kitchen & Bar 923-2032

Live Contemporary Hits

Dave Watanabe 5:30-8:30pm

Rumfire 921-4600

Live Contemporary Hits

Stephen Inglis (1/24-Kamaka Camarillo) 4:30-7:30pm

Drew Henmi (1/31-Kamaka Camarillo) 8-10:30pm

Signature Prime Steak 949-3636

Contemporary Pianist in the bar

Grant Carvalho 6-9pm

Splash Bar at the Sheraton Princess Kaiulani 921-4600

Live Contemporary Hawaiian, DJ Jem spins from 2 - 5pm

Ben Kama Duo & Dancer 4:30-7:30pm

Johnny Helm 8-10pm

Stripsteak 896-2545

Live Contemporary

Shane Kainoa 6-9pm

The Beach Bar at the Moana Surfrider 922-3111

Live Contemporary Hawaiian

Chris Salvador 12-3pm

Kailua Moon (1/24-Kaleikaumaka Duo) 3:30-6:30pm

Kamuela Kahoano (or others) 7-10pm

The Edge at the Sheraton 921-4600

Live Hawaiian Music

Christian Yrizarry 1-4pm

Brad Kawakami 4:30-7:30pm

The Grove at the Modern Pool Deck 943-5800

Live Contemporary

Tad Jennings 4-7pm

The Point Sunset Pool Bar at Turtle Bay 293-6000

Live Contemporary Hawaiian with Fireknife Dancer

Mark Calderia 5-8pm

The Veranda at the Kahala Hotel 739-8760

Live Contemporary

Johnny Valentine 6-9pm

Johnny Kukui (1/17, 1/24) 6-9pm

Vintage 1901 at the Moana 921-4600

Contemporary Piano

David Swanson 6:30-10pm

SATURDAY

Barefoot Beach Café at Queen's Beach 924-2233

Live Contemporary Hawaiian

Vanessa Alputila 5:30-8:30pm

Duke's Canoe Club Waikiki 922-2268

Live Contemporary Hawaiian

Beach 5 (or others) 4-6pm

Ells Simeona 7-9:30pm

Sean Cleland 9:30-12am

Eating House 1849 Waikiki 924-1849

Live Contemporary Hawaiian

Kings Kalohelani 10:30am-1pm

Hard Rock Cafe 955-7383

Live Contemporary

Savannah Duo 10 am - 12pm

Tad Jennings 8-11pm

House Without a Key 923-2311

Hawaiian music & hula by Miss Hawaii '73 Kanoa Miller

Kapalama Trio 5-8pm

Hula Grill 923-4852

Contemporary Rock

Kamaka Camarillo (or others) 12-2pm

Kani Ka Pila Grille 924-4992

Hoku Award Winning Hawaiian musicians

Ho'okena 6-9pm

Lewers Lounge 923-2311

Jazz Pianist

Maggie Herron & Dean Taba 8-10:30pm

Mahi'ai Table 670-2778

Live Contemporary

Danielle Parente 5-8pm

Mahina & Sun's 923-8882

Contemporary Hawaiian/Blues on the Lanai

Sabia Farang 6-8:30pm

Mai Tai Bar at the Royal Hawaiian 923-7311

Live Contemporary Hawaiian

Alika Souza 11am-2pm

Dave Watanabe 6-9pm

Maui Brewing Company 843-2739

Live Contemporary Hawaiian

Ben Kama Duo (or others) 3:30-5:30pm

Maui Brewing Kailua 518-2739

Live Contemporary Hawaiian

Scott Magz (or Dion "Boogie" Scott) 7-9pm

Merriman's Honolulu 215-0022

Live Contemporary

Kapu Copp 5:30-7:30pm

MINA's Fish House 679-0079

Live Contemporary Hits

Alex Oasay 6-9pm

Moani Waikiki 466-2629

Live Contemporary

Gil Bitanga 6-9pm

Monkeypod Kitchen Ko Olina 381-4086

Live Contemporary 3x a day including from 12:30 - 2 p.m.

Javin Kai 3:30-5pm

Izik 7-9pm

Monkeypod Kitchen Waikiki 900-4226

Live music 3x a day including from 12:30 - 2:30 p.m.

Tad Jennings 3:30-5pm



BAREFOOT BEACH CAFE
Waikiki

On Queen's Surf Beach
at the Diamond Head
end of Waikiki

**EXPERIENCE
TRUE HAWAII**

OPEN DAILY, 8AM - 9PM
(last call for food at 8:30pm)

LIVE MUSIC NIGHTLY,
5:30PM - 8:30PM
& SUNDAYS, 10AM - 1PM




Barefoot Beach Café
2699 Kalakaua Avenue
BarefootBeachCafe.com
808.924.2233 (CAFÉ)

Let's be Together...

DINING ▶ ENTERTAINMENT ▶ PAU HANA ▶ EAT ▶ DRINK ▶ BE MERRY ▶ HAPPY HOUR ▶

Kona Abergas	7-9pm	
Original Magoos Pizza		949-5381
<i>Solo Country</i>		
Buck Giles	5:30-8:30pm	
Pikos Kitchen & Bar		923-2032
<i>Live Contemporary Hits</i>		
Justin Kukui (1/4-Kamaka Camarillo)	5:30-8:30pm	
Redfish at the Wayfinder Waikiki		921-3220
<i>Live Contemporary Hits</i>		
Johnny Helm	6-10p	
Rumfire		921-4600
<i>Live Contemporary Hits</i>		
YOZA	4:30-7:30pm	
Bronson Varde	8-10:30pm	
Signature Prime Steak		949-3636
<i>Contemporary Pianist in the bar</i>		
Grant Carvalho	6-9pm	
Splash Bar at the Sheraton Princess Kaiulani		921-4600
<i>Live Contemporary Hawaiian, DJ spins from 2-5pm</i>		
Brad Kawakami Duo & Dancer	4:30-7:30pm	
Tangi Tully	8-10pm	
Stripsteak		896-2545
<i>Live Contemporary</i>		
Dustin Park	6-9pm	
The Beach Bar at the Moana Surfrider		922-3111
<i>Live Contemporary Hawaiian</i>		
Brad Kawakami	12-3pm	
Bronson Varde	3:30-6:30pm	
Koa Atwood	7-10pm	
The Edge at the Sheraton		921-4600
<i>Live Hawaiian Music</i>		
Johnny Kukui	1-4pm	
Eddie Somera	4:30-7:30pm	
The Grove at the Modern Pool Deck		943-5800
<i>Live Contemporary</i>		
Mike Izon	4-7pm	
The Point Sunset Pool Bar at Turtle Bay		293-6000
<i>Live Contemporary Hawaiian with Fireknife Dancer</i>		
Denny Ono	5-8pm	
The Veranda at the Kahala Hotel		739-8760
<i>Live Contemporary</i>		
Cory Oliveros	6pm-9pm	
Vintage 1901 at the Moana		921-4600
<i>Contemporary Piano</i>		
David Swanson	6:30-10pm	

SUNDAY

Barefoot Beach Café at Queen's Beach		924-2233
<i>Live Contemporary Hawaiian</i>		
Kimo Baker	10am-1pm	
Art Kalahiki	5:30-8:30pm	
Duke's Canoe Club Waikiki		922-2268
<i>Live Contemporary Hawaiian</i>		
Henry Kaponu	4-6pm	
Kaiona Duo	7-9:30pm	
Tad Jennings	9:30-12am	

Eating House 1849 Waikiki		924-1849
<i>Live Contemporary Hawaiian</i>		
Shane Kainoa	10:30am-1pm	
Hard Rock Cafe		955-7383
<i>Contemporary Rock</i>		
TJ & Son (1/26 - Drag Bingo)	10am-12pm	
Allie and the Waves	8-10pm	
House Without a Key		923-2311
<i>Hawaiian music & hula by Miss Universe '97 Brook Lee</i>		
Pu'uhonua Trio	5-8pm	
Hula Grill		923-4852
<i>Contemporary Rock with Hula</i>		
Jason Midro (or others)	12-2pm	
Kani Ka Pila Grille		924-4992
<i>Hoku Award Winning Hawaiian musicians</i>		
Nathan Aweau	6-9pm	
La Hiki Restaurant at the Four Seasons		679-0079
<i>Live Contemporary Hawaiian</i>		
Jenna Keala (or Kamuela Kahoano)	11am-2pm	
Lewers Lounge		923-2311
<i>Jazz Pianist</i>		
Nick La'a	8-10:30pm	
Mahī'ai Table		670-2778
<i>Live Contemporary</i>		
Johnny III	5-8pm	
Mahina & Sun's		923-8882
<i>Award-winning ukulele on the Lanai</i>		
TJ Ro	6-8:30pm	
Mai Tai Bar at the Royal Hawaiian		923-7311
<i>Live Contemporary Hawaiian</i>		
John Coelho & Kanoe Arola	11am-2pm	
Christian Yrizarry (1/19 - Johnny Kukui)	6-9pm	
Maui Brewing Company		843-2739
<i>Live Contemporary</i>		
YOZA (1/5)	6:30-9:30pm	
Dave Young Trio (1/19-Jai Rodgers)	8:30-10:30pm	
Merriman's Honolulu		215-0022
<i>Live Contemporary Piano</i>		
Grant Carvalho	5:30-7:30pm	
Moani Waikiki		466-2629
<i>Contemporary Island/Reggae</i>		
Dustin Park	7-10pm	
Monkeypod Kitchen Ko Olina		381-4086
<i>Live Contemporary 3x a day including from 12:30 - 2 p.m.</i>		
Sierra Lucia	3:30-5pm	
Lava	7-9pm	
Monkeypod Kitchen Waikiki		900-4226
<i>Live music 3x a day including from 12:30 - 2:30 p.m.</i>		
JOBY!	3:30-5pm	
Liam Moleta	7-9pm	
Original Magoos Pizza		949-5381
<i>Kanikapila Night</i>		
Leonard Jenkins & Joe Chang	5:30-8:30pm	
Pikos Kitchen & Bar		923-2032
<i>Live Contemporary Hits</i>		

Dominic Carlos	5:30-8:30pm	
Plumeria Beach House		739-8760
<i>Live Contemporary</i>		
Ronson Asuncion	6-9pm	
Rumfire		921-4600
<i>Live Contemporary Hits</i>		
Jenna Keala	4:30-7:30pm	
Alex Oasay	8-10:30pm	
Signature Prime Steak		949-3636
<i>Contemporary Pianist in the bar</i>		
Keith Montross	6-9pm	
Splash Bar at the Sheraton Princess Kaiulani		921-4600
<i>Live Contemporary Hawaiian - DJ spins from 2-5pm</i>		
Kailua Moon & Dancer (or others)	4:30-7:30pm	
Chris Luke	7:45-9:45pm	
Swell at the Alohilani		294-4108
<i>DJ KK Spins Poolside from 2-5 pm</i>		
Jason Laeha (1/5-Kamaka Camarillo)	6-9pm	
The Beach Bar at the Moana Surfrider		922-3111
<i>Live Contemporary Hawaiian</i>		
YOZA	12-3pm	
Anthony Pfluke (or others)	3:30-6:30pm	
Dave Watanabe	7-10pm	
The Edge at the Sheraton		921-4600
<i>Live Hawaiian Music</i>		
Christian Yrizarry (1/19-Johnny Kukui)	1-4pm	
Jesse Kuikahi	4:30-7:30pm	
The Point Sunset Pool Bar at Turtle Bay		293-6000
<i>Live Contemporary Hawaiian with Fireknife Dancer</i>		
Kosuke	5-8pm	
Vintage 1901 at the Moana		921-4600
<i>Contemporary Piano</i>		
David Swanson	6:30-10pm	



Hot Lines

Here's a few numbers for you to find out the latest in live music from places that change daily or don't update us regularly, since we strive to put out correct info and can't possibly list them all.

Anna O'Brien's	946-5190
Deck	931-4488
Hard Rock Cafe	955-7383
Irish Rose Saloon	947-3414
Kelley O'Neil's	926-1777
Lucky Strike Honolulu	664-1140
Mai Tai Bar Ala Moana	947-2900
Off the Wall	593-2337
Tiki's Grill & Bar	923-TIKI
Tommy Bahama	923-8785

Dining Dish

San Paolo Pizza & Wine, Honolulu’s Italian-Brazilian fusion restaurant, launched lunch service at the end of the year. Diners can now enjoy the same delicious menu offered at dinner during lunchtime, available from 11:30 a.m. to 2:30 p.m. Initially offered Friday through Sunday, they plan to expand lunch service to daily operation in the near future as the team grows. sanpaolopizzeria.com. • **Han no Daidokoro**, the popular Japanese-style Korean BBQ restaurant in Kakaako known for its wagyu yakiniku, has opened a second location on the bottom floor of Lilia Waikiki next to Piko’s Kitchen. hannodaidokoro.com. • **Ki Restaurant and Night Club** has opened with *Chef Keith Endo* in the kitchen offering an elegant upscale Asian-fusion menu. The restaurant is open from Tuesday to Sunday from 4 - 9:30 p.m., and the club side is open from 10 p.m. to 2 a.m. on Friday and Saturday. Located across the street from the Convention Center at 1730 Kalakaua Avenue, enjoy such menu items as Maine Lobster Linguini with Uni Butter, Bone Marrow done Asian-style with a short rib ragu and miso butter with chimichurri, and Seared Scallops with truffle oil. @kiclubhawaii. • **Restaurant Suntory** will be offering diners the ability to customize their omakase experience at its secret sushi restaurant, Sushi Tokiwa, offering the new concept of “Okonomi” or “as you like it,” allowing guests to choose their favorite sushi selections from a variety of options as of mid-January. • **Vintage Books Hawaii** is now open at the former 3660 on the RISE location, and aside from the hostess stand and the outside bar, it’s unrecognizable - in the best possible way. *Bill Tobin* and team, including mixologist *Jennifer Ackrill*, have been hard at work creating a fabulous cocktail program, while *Chef Stephen Toyofuku* has created a menu inspired by global and local flavors. Expect items such as Crispy Braised Lamb Ribs, glazed with fish caramel and fresh mint, and a Ulu Taco Flight, made with local breadfruit tortillas served inside the **Private Collection**, a hidden dining room in the back where a password is needed and reservations recommended. Find out more: vintagebookshawaii.com.



Chef's Corner

Dean & DeLuca's Boulanger Daisuke Shimauchi

Daisuke Shimauchi is a chef boulanger, or a master of a bread. Making the bread for all three Dean & DeLuca's in town is his daily life's work. He honed his craft working for great chefs in Tokyo, Paris, and Düsseldorf, Germany, including the legendary Joel Robuchon. Chef is committed to creating bread that is kind to both the planet and people. Emphasizing the principles of the Sustainable Development Goals, he strives to support the healthy lives of the people of Hawaii through food.

What was your first childhood food memory

The homemade meals my mother used to make. The onigiri—rice balls she shaped with her hands—though uneven in shape, were filled with so much love. The fillings included umeboshi, kombu, and salmon. Her nikujaga had a gentle, Japanese seasoning that made it the perfect accompaniment to rice. Every dish she made had a comforting taste that made me feel at home.

What made you want to be a baker?

I have always loved French culture, and it was this influence that inspired me to become a baker. Baking is simple yet profound, with an endless variety of shapes and flavors, and I was captivated by its creativity. Additionally, since bread is something we eat daily, I strongly believe it should be healthy. I strive to make bread that is kind to people and the environment.

What was the first item you remember baking?

Making cookies with my mother. It was my first time, so I was nervous about whether it would turn out well, but the cookies came out fragrant & delicious. The sense of accomplishment I felt made me very happy, and deepened my interest.

What was your first job in the industry?

I’m not sure, but I do recall starting by learning the specialized terminology. I’m clumsy, and it takes me a long time to learn something, but because of that, I take the time to identify what is important, focus on it, and pursue it, allowing me to complete my work more perfectly than others.

Who would you consider your mentor?

Chef Katsuei Shiga of Signifiant Signifié is my bread-making mentor, and I respect him deeply. I believe Chef Shiga is the best baker in the world among all the bakers I know. Working with him has become the foundation of who I am today.

What lesson did you learn from Joel Robuchon?

The importance of rigor and relentless pursuit in work. Working alongside him was invaluable, and now, as I find myself in a position to teach others, those lessons have proven to be immensely beneficial. I believe that only through strictness can something truly great be created. While the

definition of strictness may vary, I’ve learned that in bread-making, which is all about teamwork, it’s essential for everyone on the team to share the same goal of creating the best product. This requires not only strictness to strive for excellence but also kindness to support each other.

What drew you to breadmaking?

It comes from my deep interest in French culinary culture. When talking about French food culture, I believe bread, cheese, and wine are all essential elements. All of these are fermented foods, and I love sharing the qualities of fermented foods.

What puts you apart from other bakers?

I never compromise on any aspect of my work. If I were to make excuses and settle for less, I would consider myself unqualified as a craftsman. I aim to use my experience and knowledge to create breads that only I can make and share them.

Favorite ingredient you like to work with?

I love natural ingredients. I personally prepare all the natural yeast used for bread-making. I have also imported a stone mill from Germany and carefully selected wheat harvested near Grand Teton National Park, which I mill in-store.

What’s your favorite item at Dean & DeLuca?

Everything, but especially the croissant made with luxurious Échiré butter imported directly from France, and the Campagne, a country loaf, which I’ve made with the utmost care and attention.

Now that you live here what do you like best?

I love the wonderful climate, beautiful ocean, and the warmth of its people, which somehow reminds me of the nostalgia of old Japan.

Any other information you want to share?

While you may not think of bread as a fermented food, mine undergoes a meticulous fermentation process. It’s aged slowly at optimal temperatures that yeast thrives in, maximizing its natural sweetness and umami through the power of fermentation. Hawaii’s soft water is not ideal for European-style bread-making, but leveraging my experience, I adjust the mineral content of the water to resemble that of Parisian water, bringing the authentic taste closer to perfection.



Homemade Bread Recipe

- Ingredients**
- All-purpose flour: 500g
 - Salt: 10g
 - Honey: 2g
 - Instant dry yeast: 2g
 - Water: 500g

Directions: Begin by mixing water, salt, and honey in a bowl. Add the flour and instant dry yeast to the bowl, then mix with your hands or a rubber spatula until no dry flour remains. After mixing, let the dough rest for 30 minutes. Then fold the dough inside the bowl. Repeat the folding process three times, with 30-minute intervals between each fold. After the last fold, refrigerate the dough and let it ferment for 16 hours. Remove the dough from the refrigerator and divide it into 100g portions (shape into rectangles). Allow the portions to proof at room temperature for about 1 hour. Preheat your oven to 500°F (260°C). Spray the dough lightly with water using a spray bottle and place it in the oven. Bake for about 15 minutes, then it’s ready to enjoy!

Dean & DeLuca is located at Royal Hawaiian Center, the Ritz Waikiki, and Kō’ula
Hours: Business hours and phone numbers vary by location. Please refer to the website for details.
Web: deandeluca-hawaii.com • **Instagram/Facebook:** @deandelucahawaii

JANUARY CALENDAR OF EVENTS

Continuing Events

JANUARY 2 - FEBRUARY 2 THE WORLD OF WONG KAR WAI

Wong Kar Wai is one of the defining auteurs of contemporary cinema. After a 10-year hiatus, he returned to directing last year with *Shanghai Blossoms*—his first TV series, which is a hit in China. Before the show becomes available in the US, we are delighted to present the recent 4K restorations of six Wong Kar Wai classics, along with a new director's cut of *The Hand*. This is a rare opportunity to see *As Tears Go By*, *Days of Being Wild*, *Chungking Express*, *Fallen Angels*, *Happy Together*, and *In the Mood for Love* on the big screen. Times vary, tickets \$15. Doris Duke Theatre. honolulumuseum.org.

MONDAYS, WEDNESDAYS & FRIDAYS O NĀ LANI SUNSET STORIES HULA SHOW

Honoring the rich history and sense of place of the International Market Place through song & dance. It begins at sunset with the lighting of the Lamakū Torch Tower on Kalākaua Avenue and leads to the Queen's Court. Free. 6 p.m. shopinternationalmarketplace.com.

TUESDAY THRU SATURDAY ARTS AT MARKS LATEST EXHIBIT

Get artsy with your holiday gift at the Holiday Art Fair at the Arts at Marks. Browse through a wide variety of at least 150 art pieces. Meet the Artists at Pau Hana Friday on the first and final Friday of the month from 5 - 8 p.m. In honor of the holiday extravaganza, there will be two

additional meet-and-greets on Dec. 13 - 14. Open Tues-Sat. 12 - 5 p.m. artsatmarks.com.

TUESDAY THRU SATURDAY INPEACE PRESENTS KAULELE

INPEACE Kaulele at Helumoa features Hawaiian culture and science exhibits on Loko I'a (Hawaiian fishpond), Kapa (Barkcloth), and Kaulana Mahina (Hawaiian Lunar Calendar). These interactive exhibits offer attendees of all ages the opportunity to kilo (observe), 'imi loa (explore), and noi'i (investigate). Tues - Fri: 11 a.m. - 6 p.m., Sat 11 a.m. - 7 p.m. Admission \$3 - \$10. Open across from the Waikiki Food Hall through March 29, 2025. inpeace.org/events.

WEDNESDAYS, SATURDAYS & SUNDAYS ALOHA STADIUM SWAP MEET

The Aloha Stadium Swap Meet has been going strong since 1979. Featuring over 400 vendors, crafters and artists, the Swap Meet offers low-prices on a wide selection of quality products with food trucks to snack from. Wednesdays & Saturdays: 8 a.m. - 3 p.m., Sundays, 6:30 a.m. - 3 p.m. \$2 admission ages 12 & up, \$1 for locals. alohastadium.hawaii.gov.

FRIDAYS CHAMPAGNE FRIDAYS AT PARK WEST

Watch a live painting session as resident artist Cam Rose paints in the window of Park West Gallery along Lewers Street while sipping on a complimentary glass of bubbly at Park West Gallery on Waikiki Beach Walk Fridays from 4 to 9 p.m. through the end of January. parkwestgallery.com/hawaii.

FRIDAYS

ROYAL HAWAIIAN BAND LUNCHTIME SHOW

The Royal Hawaiian Band returns to 'Iolani Palace for its popular lunchtime concerts. Held on most Fridays, the concerts are free and open to the public. 12 - 1 p.m. iolanipalace.org

FIRST FRIDAY (JANUARY 3) DOWNTOWN GALLERY WALK & CRAFT FAIR

Downtown comes alive the first Friday of every month as art lovers fill the streets for Honolulu's outdoor self-guided arts tour. Stores spill out onto the sidewalk, and artists are on hand to chat about to their works, and restaurants are ready to serve you. firstfridayhawaii.com.

SECOND FRIDAY (JANUARY 10) BISHOP MUSEUM AFTER HOURS

Enjoy after-hours access to the Museum with a special Pau Hana. Experience unique changing exhibits, hear the latest scientific discoveries, engage with Hawaiian cultural practitioners, and spend the evening on the Great Lawn with food and drink for sale. 5 - 9 p.m. \$10 at the door. (\$5 pre-sale) bishopmuseum.org.

FRIDAYS • HOMA NIGHTS

On Friday nights, explore the galleries, stargaze in the courtyards, enjoy art experiences and music, and connect with the museum community, bar service at the HoMA Cafe, and other interactive art experiences until 9 p.m. honolulumuseum.org.

SATURDAYS & SUNDAYS ART ON THE ZOO FENCE

Art On The Zoo Fence is a group of resident Hawaii artists that meet every Saturday and Sunday to display and sell art and photography on the Zoo fence on Monsarrat Avenue opposite the Kapiolani Park Bandstand. This is the only outdoor art venue in Honolulu that has proudly been displaying art since 1953. 9 a.m. - 3 p.m. Free. artonthezoo fencehi.com.

SECOND SATURDAY (JANUARY 12) KANIKAPILA MA KAIWI'ULA

Bring your 'ukulele, or borrow one that's there. Join in to learn some new techniques, share mo'olelo or just enjoy the music as Ukulele Guild of Hawai'i members lead guests through selections from the Hawaiian Songbook. Free with admission. Bishop Museum Native Hawaiian Garden. 10 a.m. bishopmuseum.org.

SECOND SUNDAY (JANUARY 12) KAMA'AINA SUNDAYS

'Iolani Palace welcomes all residents to Kama'aina Sunday when guests can explore the Palace, immerse themselves in Hawaiian culture, taste 'ono food, support local vendors, enjoy lively entertainment, and more. Take advantage of free tours, entertainment, family-friendly activities and plenty of food options with proof of residency. Free tours will be available to the first 500 guests. 9 a.m. - 2 p.m. iolanipalace.org.

THIRD SUNDAY (JANUARY 19) COMMUNITY DAY

Enjoy exploring the galleries and outdoor spaces, or try your skills at one of their Gallery Hunts at the first Community Day of the year. Admission is free for Hawai'i residents. 10 a.m. - 6 p.m. 532-8700. honolulumuseum.org.



Happy & Healthy New Year!

Start the new year with the healthiest dining in Waikiki

Enjoy fresh catch sushi, locally sourced greens, the world's best acai bowls, and a luscious dessert of daily gelato as part of the many healthy dining options at Waikiki Beach Walk.



WAIKIKI
BEACH WALK.

WAIKIKIBEACHWALK.COM



Free Parking 10am-3pm Daily*

*With \$10 minimum purchase

Open 365 Days | 10AM - 9PM

Located on Lewers St. between Kalakaua Ave. & Kalua Rd.

JANUARY CALENDAR OF EVENTS

JANUARY 2-3 • THE STYLISTICS



Fifty years ago, The Stylistics put out their biggest hit, "You Make Me Feel Brand New" which earned them 5 gold singles and 3 gold albums. They will perform two shows each night at 6:30 and 9 p.m. Tickets: \$65-\$115. bluenotehawaii.com.

JANUARY 2 QUEEN EMMA'S BIRTHDAY

Honor Hawai'i's beloved Queen Emma with traditional lei draping of her statue. One of Hawai'i's most respected queens, she was well known for her humanitarian efforts and founding The Queen's Medical Center with her husband, King Kamehameha IV. International Market Place sits on land owned by the Queen Emma Land Company, and her statue is located in the Queen's Court at the International Market Place. shopinternationalmarketplace.com.

JANUARY 5 DA OG'S OF HAWAII COMEDY

Andy Bumatai, Augie T, and Paul Ogata return to the Hawaii Theatre for a hana hour of their comedy show highlighting the best of Hawaiian comedy, with a special guest slated to join them onstage. \$33-\$49. 7 p.m. hawaii theatre.com.

JANUARY 6-12 SONY OPEN IN HAWAII

144 of the world's greatest golf professionals are heading to the Waialae Country Club for the largest charity golf event in Hawaii. The Sony Open has raised over \$23 million dollars for more than 100 not-for-profit organizations each year since 1999 and will be shown live around the world. sonyopeninhawaii.com.



JANUARY 8-9 BIANCA DEL RIO LIVE IN CONCERT

Everyone's favorite "clown in a gown," Bianca Del Rio, is returning to the stage with a new comedy show, aptly titled "Dead Inside." Dubbed 'The Joan Rivers of the Drag World' by the New York Times, and known for winning season 6 of *RuPaul's Drag Race*, this larger-than-life outrageous comic isn't afraid to shock and offend. Her new show will cover politics, pop culture, political correctness, current events, cancel culture, and everyday life through the eyes of someone who's 'dead inside' and finds humor in everything. \$39-\$275. 8 p.m. Thursday's show is sold out. hawaii theatre.com.

JANUARY 9-10 JAKE SHIMABUKURO

Jake's deep love and respect for the 'ukulele has produced new and unexpected ways to push the boundaries of what he could do on those four-strings. His mastery of the instrument and his ability to weave together diverse genres to create a cohesive and captivating musical experience not to be missed. He will perform two shows each night at 6:30 and 9 p.m. \$35-\$45. bluenotehawaii.com.



JANUARY 11

SONGS OF LOVE: A MUSICAL JOURNEY THROUGH KOREAN HISTORY IN HAWAII'

"Songs of Love," is a documentary that highlights the cultural contributions of Hawai'i's Korean community through music and storytelling. Featuring performances by Grammy Award-winning violist Richard Yongjae O'Neill and concertmaster Ignace Jang, the film brings together history, resilience, and cultural legacy in a unique and moving narrative. There will also be a live performance and a Q&A with the director and musicians. 18 & under free. \$15. 2 p.m. Doris Duke Theatre. honolulu museum.org.

JANUARY 11

2025 NEW YEARS OHANA FESTIVAL

The New Year's Ohana Festival is a celebration of the most beloved local and Japanese New Year traditions in the islands. The festival features a variety of crafts, food, music, dance, and cultural entertainment suitable for all ages. 10 a.m. - 4 p.m. Japanese Cultural Center of Hawai'i. jchawaii.org.

JANUARY 11 • HAPA SYMPHONY - A TRIBUTE TO MR. SINATRA



Kick off the new year with a tribute to the late Jimmy Borges. Take part of this unforgettable evening as Jordan Segundo joins the HSO to celebrate Jimmy's iconic legacy and 90th anniversary. Tickets: \$10.50-\$109. 7:30 p.m. hawaii theatre.com.

JANUARY 11-12 HAWAII POP CON

The largest sports, trading cards, comic book, anime, and pop culture convention in Hawaii. Meet & Greet with Sports Stars, Local and International Celebrities, Comic Book and TCG Artists, food trucks, live performances, and more. Tickets: \$25-\$500. 10 a.m. - 6 p.m. Blaisdell Exhibition Hall. ticketmaster.com.

JANUARY 15

MARC MARTEL - ONE VISION OF QUEEN

Marc Martel, who lent his nearly flawless vocals to the Academy Award winning biopic movie "Bohemian Rhapsody" as one of the vocalists for front man Freddie Mercury, has created one of the premier tribute shows to this iconic group in the world. Martel is known for his Queen covers and his vocal likeness to Mercury. This note for note recreation tribute show of Queen's greatest hits has toured the world over under several brands for the last 6 years. \$60-\$90. 7 p.m. hawaii theatre.com.

JANUARY 17 POLYNESIAN BOWL

The world's top Polynesian high school players gather in Hawai'i to celebrate culture and play the game they love each year during the Polynesian Football Hall of Fame Enshrinement Week. 4 p.m. The game will take place at the Kūniūākea Stadium on the Kamehameha Schools Kapālama campus. Tickets: \$22-\$75. polynesianbowl.com.

Continued on page 16.



CLASS OF 2025 ENSHRINEMENT CEREMONY JANUARY 18TH at the Polynesian Cultural Center

You're invited to football greatness. Island style.

Your guests are invited to the Annual Polynesian Football Hall of Fame Enshrinement Ceremony. We'll be honoring the island's greatest players, coaches and contributors at the Polynesian Cultural Center.

This year's class includes:

Chris Kemoatu | Jim Nicholson | Kalani Sitake



For information and to purchase tickets, visit polynesianfootballHOF.org



JANUARY CALENDAR OF EVENTS

Continued from page 15.

JANUARY 17-19 • BILLY F. GIBBONS



He's back! Billy Gibbons of ZZ Top fame was just here a few months ago in May, but he must have had a great time, because he's bringing his signature glasses, beard, guitar, and unmistakable vocals back to the Blue Note. Tickets are going fast, so grab yours while you can.

Meet & Greet packages are available for purchase. One show a night at 7 p.m. Tickets \$85-\$325. bluenotehawaii.com.

JANUARY 18 GIMME GIMME DISCO

Calling all Dancing Queens! If you can't get enough ABBA then you don't want to miss this dance party. Gimme Gimme Disco is a DJ-based dance party playing all your favorite ABBA hits, plus plenty of other disco hits from the 70s & 80's including The Bee Gees, Donna Summer, & Cher. Disco dud encouraged. The Republik. \$20. 9 p.m. bampproject.com.

JANUARY 18 ATSUKO OKATSUKA - FULL GROWN TOUR



Atsuko Okatsuka is a global standup comedian and actress whose highly anticipated second standup special will premiere in 2025 on Hulu and internationally on Disney+. The special

follows the success of Atsuko's debut HBO special *The Intruder*, which was named "Best Debut Special of 2022" by the New York Times. Tickets: \$55-\$150. 7 p.m. hawaii theatre.com.

JANUARY 18-20 • FRIENDS OF THE LIBRARY OF HAWAII ANNUAL MUSIC & BOOK SALE

The 2025 annual Music and Book Sales offers over 25,000 Records, 25,000 CDs, plus DVDs, 15,000 Books, Audio Books, Artwork, Comics, and more! The former Pier 1 Store at Ward Village. Open 9 a.m. to 7 p.m. on Saturday and Sunday, and from 9 a.m. until 3 p.m. on Monday. friendsofthelibraryofhawaii.org.

JANUARY 19 POLYNESIAN FOOTBALL HALL OF FAME

The Polynesian Football Hall of Fame honors Polynesia's greatest players, coaches, and contributors. This year's inductees were selected from a field of over 100 nominees. The Class of 2025 is Chris Kemoeatu of Tongan Ancestry, Jim Nicholson of Samoan Ancestry, and Kalani Sitake of Tongan Ancestry. 9 a.m. - 1:30 p.m. Tickets are \$25 and include lunch and admission to PCCs villages. The Celebration Dinner will be held at the Sheraton Waikiki that evening. PolynesianFootballHOF.org.

JANUARY 20 MASTERS OF HAWAIIAN MUSIC

Four-time Grammy-winner, master slack key guitarist George Kahumoku Jr., known as "Hawai'i's Renaissance Man," also a multiple Na Hōkū Hanohano Award winner, will be joined onstage with 6-time Grammy winner Daniel Ho,

a multi-instrumentalist (ukulele, slack key guitar, piano, vocals) and composer, and International star and two-time Grammy winner Tia Carrere. 7 p.m. Tickets: \$25-\$35. bluenotehawaii.com.

JANUARY 23-25 NURSE JOHN ON TOUR



Nurse John, who first flew to prominence through his TikTok videos, bringing attention and awareness to what nurses go through every single day through humor, has become one of the hottest tickets out there. Shows on January 24

and 25 sold out quickly, but fortunately, they added another show. Tickets: \$35-\$57.50. 7 p.m. hawaii theatre.com.

JANUARY 24 THE ITALS

Keith Porter got his start in 1967 with the hit single "Hitey Titey." In 1976 he came out with the classic hit single - "Ina Dis Ya Time." He then formed a trio called The Itals that included harmony vocalists. The name came from the Jamaican patois word meaning natural or pure. The Itals were soon recognized as one of reggae's premier "harmony groups." The Itals' roots reggae sound remains focused on positivity, love and harmony. 7:30 p.m. Tickets: \$35-\$40. bluenotehawaii.com.

JANUARY 24-25 CHINESE NEW YEAR'S CELEBRATION



Enjoy two days of food, live entertainment, and celebrations to welcome the Year of the Snake. Friday, 5 - 10 p.m. and Saturday, 9 a.m. - 10 p.m. Chinatown Cultural Plaza. chinesechamber.com.

JANUARY 25 REFLECTIONS ON AMERICANA WITH THE GALLIARD STRING QUARTET

Reflect on the essence of "Americana" as Chamber Music Hawai'i kicks off its 2024-2025 season with a program of American composers that encompasses a wide array of styles, including Gershwin, Womack, Walker, and Ives. Tickets \$40. Doris Duke Theatre. 7 - 9 a.m. honolulu museum.org.

JANUARY 25 JIMMY O. YANG - BIG & TALL TOUR

Jimmy O. Yang is a comedian and actor best known for *Crazy Rich Asians*, *Love Hard* and *Space Force*, where he also served as a writer. He is also starring in the limited series *Interior Chinatown* on Hulu that recently premiered at HIFF, directed by Academy Award winner Taika Waititi. Jimmy's standup specials continue to go viral on social platforms with hundreds of millions of views. The BIG & TALL Tour will be his third and biggest tour to date, having already sold out multiple shows at Carnegie Hall. Tickets: \$49-\$109. Blaisdell Arena. 8 p.m. ticketmaster.com.



CIRQUE DU SOLEIL
AUANA
A NEW SUN RISES IN HAWAI'I

OUTRIGGER
WAIKIKI BEACHCOMBER HOTEL

NOW PERFORMING
WED-SUN AT 5:30PM & 8:30PM
CIRQUEDUSOLEIL.COM/AUANA

SCAN FOR INFO

EVENTS CON'T

JANUARY 25

TAYLOR SWIFT NIGHT AT THE REPUBLIK

Swifties unite for The Taylor Party, the Original Taylor Swift Inspired Dance Party like no other. Come shake it off at evening of Swifties, singing and dancing through all of Taylor's iconic Eras. Tickets: \$20-\$25. The Republik. Doors open at 8 p.m., show starts at 9 p.m. bampproject.com.

JANUARY 25-26

AN ACOUSTIC EVENING WITH MATISYAHU



When Matisyahu first started touring to packed clubs more than eleven years ago, it was before the Live at Stubbs release. His performance was a raw expression of his spirituality at that time and were supported by musicians who played a foundation of roots reggae augmented by the energy of a rock trio. He will perform two shows each night at 6:30 and 9 p.m. Tickets \$55-\$65. bluenotehawaii.com.

**JANUARY 28-29
SAMMY JOHNSON**

An Australian native, Sammy Johnson embraces his Maori and Polynesian roots to create positive and uplifting music. Blending together island reggae, soul and jazz vibes with heartfelt lyrics, he has quickly become a leader of the scene alongside new school artists like J Boog and veterans like Katchafire They will perform two shows each night at 6:30 and 9 p.m. Tickets: \$35-\$45. bluenotehawaii.com.

JANUARY 29

2025 CHINATOWN FESTIVAL & PARADE

Enjoy a family-friendly festival in Chinatown to welcome the 2025 Lunar New Year. The 2025 Lunar New Year parade starts at the Hawaii State Capitol lawn. Participants march along Hotel Street to Chinatown and are brought to the Chinatown Festival & Parade, formally known as Night in Chinatown Festival & Lunar New Year Parade. The festival will be on Beretania Street and flows into A'ala Park. 9 a.m. - 10 p.m. chinatown808.com.

**JANUARY 31
CHANGES IN LATITUDE**

Changes In Latitudes is a tribute show to Jimmy Buffett, the master of the tropical lifestyle. This nationally acclaimed band travels the country taking audiences to the ultimate beach party with beach balls flying, dancing conga lines, and leis for all. Comprised of world-class musicians, and travelling with a full tropical stage set-up, Changes In Latitudes recreates the Jimmy Buffett concert experience with amazing authenticity. Tickets: \$59.50-\$79.50. 8 p.m. hawaii theatre.com.

JANUARY 31 - FEB 1 • ALL-4-ONE



I Swear, All-4-One and their timeless songs live on. They continue to tour the world as the original members with a collection of hit songs under their belt. They will perform two shows each night at 6:30 and 9 p.m. Tickets: \$45-\$55. bluenotehawaii.com.

INTERNATIONAL MARKET PLACE

The International Market Place held its annual Concierge Appreciation night and as always, the food, the fun, activities, prizes, and the hospitality were second to none. Oahu Photo Booths were on hand, while the Shiatsu & Massage Center set up chairs to give mini massages, and Moani, ShoreFyre, Liliha Bakery, Kūhiō Ave Food Hall and more were passing out food. shopinternationalmarketplace.com.



Plan an Adventure

Let Hawaii Nautical show your guests our ocean playground.

808-234-SAIL (7245)



TURTLES GUARANTEED



Enjoy our morning and afternoon snorkel sailings at Turtle Canyon with a wildlife guarantee! See turtles or cruise again for free (certain rules apply). Wildlife guarantee is for re-rides only, no refunds.



WAIKIKI BAPTIST Church

Your Church in Waikiki

424 Kuamo`o St

(Near the Ambassador Hotel)

Sunday Worship Services

9:00 AM - Contemporary

10:45 AM - Traditional



(808)955-3525

WaikikiBaptist.com

HELP US UPDATE THE MAILING LIST

- Not getting your issue?
- Getting issues for people no longer there?
- Getting multiple issues?

Please let us know at publisher@oahuconciierge.com

CIRQUE DU SOLEIL 'AUANA

After years of planning, building, creating, and casting, Cirque finally opened it's doors for a series of dress rehearsals around Thanksgiving, and the folks at 'Auana were kind enough to include hundreds of you in to grab the very first look at the show, and based on the emails I got afterwards, you all loved it. Didn't make it? 'Auana offers a 30% kama'aina discount at every show. cirquedusoleil.com/auana.



That's Entertainment

HOTELS

- ALA MOANA HOTEL** 955-4811
 • **Fri** - Live Music & Hula 3-5pm *Lobby*
'ALOHLANI RESORT 922-1233
 • **Daily** - Fish Feeding 10:30am & 2:30pm *O Bar*
 • **Daily** - Live Music 6:30-9:30pm *Swell Bar*
 • **Daily** - Light Monument Video Art Series 7-9pm *Swell Bar*
 • **SunWedSat** - Tank Talk 9am. *O Bar*
HALEKULANI 923-2311
 • **Daily** - Music & Hula 5-8pm *House Without a Key*
 • **TWThFS** - Live Jazz 8:30pm - 12am, *Lewers Lounge*
 • **Sun** - Sunday brunch w/Noly Paa on piano 9:30am - 2pm
HILTON HAWAIIAN VILLAGE 949-4321
 • **Fri** - Fireworks at 7:45pm
 • **Daily** - Live entertainment, Tapa Bar. 6:30-9:30pm
HILTON WAIKIKI BEACH 922-0811
 • **TWTh** - Live music at L.B.L.E. Lounge 6-9pm
HYATT REGENCY WAIKIKI 923-1234
 • **MWed** - Farmer's Market from 4-8pm
 • **Mon-Fri** - Cultural Programs at the Ho'okela Culture Center
 • **TTh** - Walking Tour thru parts of Waikiki at 10am
 • **TTh** - Live Hawaiian music at Pualeilani Atrium, 4-6 pm
KAHALA HOTEL & RESORT 739-8888
 • **MTWThFSat** - Free Hawaiian activities at The Veranda, 10am
 • **ThFSat** - Live entertainment at The Veranda from 6-8pm.
 • **FriSat** - Afternoon Tea at The Veranda at 2pm & 3:30pm
 • **Sun** - Brunch at Hoku's w/Ginny Tiu on piano 10am-1:30pm
 • **Daily** - See the interactive dolphin programs every hour
LUANA WAIKIKI HOTEL & SUITES 955-6000
 • **MWF** - Enjoy live music and hula on the Mezzanine 5-6pm
MOANA SURFRIDER 922-3111
 • **Daily** - Live music at The Beach Bar, 4:30-6:30pm, 7-10pm
 • **WThFSSu** - David Swanson at Vintage1901, 6:30-10pm
 • **SatSun** - Afternoon Tea at the Veranda, 11:30am - 2:30pm
OUTRIGGER REEF WAIKIKI BEACH 923-3111
 • **Daily** - Live Hawaiian music at Kani Ka Pila Grille. 6-9pm
PRINCE WAIKIKI 956-1111
 • **ThFSSu** - Live music at 100 Sails from 6-8pm
 • **Sat** - DJ KK poolside from 2-5pm, Sun from 2:30-5:30pm
SHERATON PRINCESS KA'IULANI 922-5811
 • **Daily** - Live music poolside 6-9pm. DJ from 3-6pm.
THE ROYAL HAWAIIAN 923-7311
 • **Daily** - Live Hawaiian music at the Mai Tai Bar. 11am-2pm
 • **TWFSsu** - Live Hawaiian music at the Mai Tai Bar. 6-9pm
 • **MTh** - Live Hawaiian music at the Mai Tai Bar. 8-10pm
TURTLE BAY RESORT 293-6000
 • **Daily** - Live music at The Pointe Pool Bar, 4-7pm
 • **Daily** - Live music at Off the Lip, 7pm
 • **Daily** - The Stable at Turtle Bay offers a variety of experiences
WAIKIKI BEACH MARRIOTT RESORT 922-6611
 • **Daily** - Live music, Queensbreak Restaurant 5:30-8:30pm
 • **Daily** - Live music in the Lobby 6-9pm

FARMERS MARKETS

- WBW OPEN MARKET**
 • **Mon** - Set up on the Plaza at Waikiki Beach Walk. 4-8pm.
HYATT REGENCY FARMERS MARKET 225-4002
 • **MonWed** - Hyatt Regency 1st floor waterfal atrium 4-8pm
HAWAII FARM BUREAU MARKET 848-2074
 • **Wed** - Set up on the Blaisdell Concert Hall Lawn 4-7pm.
HALE'IWA FARMERS MARKET 388-9696
 • **Thurs** - Located at Waimea Valley. 2-6pm
KCC FARMERS MARKET 848-2074
 • **Sat** - Kapiolani Community College 7:30-11am
KAKA'AKO FARMERS MARKET 388-9696
 • **Sat** - 919 Ala Moana Blvd & 210 Ward Avenue. 8am-12pm
PEARLRIDGE FARMERS MARKET 388-9696
 • **Sat** - Pearlridge Mauka by Macy's. 8am-12pm
ALOHA HOME MARKET 225-4002
 • **Sun** - Kailua 340 Uluniu Street 9-2pm.

- ALOHA MARKET AT WAIKIKI** 735-4510
 • **Sun** - Jefferson Elementary 324 Kapahulu Ave. 8-2pm.
KAILUA FARM BUREAU MARKET 848-2074
 • **Sun** - Kailua Town Center. 4-7pm
KAILUA TOWN FARMERS MARKET 388-9696
 • **Sun** - Enchanted Lake Center by Kailua Cinema. 8am-12pm

ATTRACTIONS

- FOSTER BOTANICAL GARDEN** 768-7135
 • **Daily** - Hawaii's oldest Botanical Garden in the midst of downtown open 9am - 4pm. \$5/\$1 keiki (kama'aina \$3)
 • **Daily** - Free docent-led tours at 10:30am. Reservations rec.
HONOLULU ZOO 926-3191
 • **Daily** - The Zoo is open from 10am - 4pm. Last Entry at 3pm. GA \$19 adult/\$11 keiki (kama'aina \$8/\$4).
 • **Sat** - Explore the Zoo after the gates close 5:30-7:30pm.
KILOHANA HULA SHOW
 • **MTW** - Free hula show 9:30 - 10:30am. Kuhio Hula Mound
KUHIO BEACH HULA SHOW 843-8002
 • **TueSat** - Free show 6:30 - 7:30pm. Kuhio Hula Mound
WAIKIKI AQUARIUM 923-9741
 • **Daily** - The Aquarium is open from 9am - 4:30pm. GA \$12 adult/\$5 kids (kama'aina \$8).
 • **1st3rdTue** - Hawaiian Plant Tour. 1:30pm. Free w/admission

MUSEUMS

- BATTLESHIP MISSOURI MEMORIAL** 455-1600
 • **Daily** - Relive stories of war, victory, and the road to peace onboard the "Mighty Mo." Join a guided tour in English, Japanese, Chinese, or Korean or explore the ship at your own pace. Digital tour maps in various languages are available. 8am-4pm. More info available online at ussmissouri.org.
BISHOP MUSEUM 847-3511
 • **Daily** - The 15-acre campus offers a chance to learn about the cultural and natural heritage of Hawai'i across three different exhibition buildings. Daily planetarium shows, a native Hawaiian botanical garden and more. 9am-5pm.
HAWAI'I STATE ART MUSEUM 586-0900
 • **Mon-Sat** - 'Museum Interpreters' on-site to provide visitors with basic information about the museum and artwork. Special evening events as listed below. Open 10am - 4pm.
 • **1stFri** - Live entertainment and food vendors. 6-9pm
 • **2ndFri** - "Vibe" Jazz performances & food vendors. 6-9pm
 • **4thFri** - Hawaiian music night. 6-9pm
 • **3rdSat** - Family Arts & Crafts Day 11am - 3pm
HONOLULU FIRE MUSEUM 723-7167
 • **3rdSat** - Free one-hour guided tours through various exhibits with a firefighter recounting HFDs history the 3rd Saturday of every month. 9am - 2pm on the hour. 620 South Street. Reservations required. Book online: fire.honolulu.gov then hit the submit request botton and click museum tours.
HAWAIIAN MISSION HOUSES 447-3910
 • **TW** - Docents lead tours through the oldest existing frame house in the Islands. 11am, 12pm, 1pm and 2pm.
 • **ThFSat** - 11am, 12pm, 1pm, 2pm and 3pm tours
 • **TWThFSa** - Gift shop open 10:30am - 4pm
HONOLULU MUSEUM OF ART 532-8726
 • **ThFSSu** - Tour & Talk Story 11am. Free with admission.
 • **ThFSSu** - Highlights tour 2pm. Free with admission.
 • **Fri** - HoMA Nights, open until 9pm. Free with admission.
IOLANI PALACE 522-0832
 • **TThS** - Audio tours available from 9am - 4pm
 • **WTh** - Docent-led tours available from 9am - 4pm
 • **EveryOtherWed** - He Mele Lahui Hawaii with Ku'uipo. 9am
 • **Fri** - Royal Hawaiian Band. Free. 12-1pm
 • **SunMon** - Museum Closed
LUCORAL MUSEUM 778-8189
 • **Mon-Fri** - Free self-guided tours featuring local and global gemstones and a one-of-a-kind dinosaur egg. Visitors can also create their own one-of-a-kind jewelry. 10% off gift shop with mention of Oahu Concierge. 10am-5pm.

- PEARL HARBOR AVIATION MUSEUM 441-1000**
 • **Daily** - Vintage aircraft in battlefield hangars at Pearl Harbor, outdoor exhibits, flight simulators, and the Bob Hope: An American Treasure Exhibit. Shuttle & Tickets at USS Arizona Memorial Visitor Center or PearlHarborAviationMuseum.org.

SHOPPING CENTERS

- ALA MOANA CENTER** 955-9517
 • **Daily** - Hula Show, 5pm. *Centerstage*
 • **EveryOtherWed** - Royal Hawaiian Band. 11am.
 • **Sat** - Local entertainment, 3pm. *Centerstage*
 • **Sun** - Keiki Hula Show, 1pm. *Centerstage*
 • **Daily** - Pau Hana Music Series, 5:30pm. *'Ewa Wing Stage*
 • **2ndSat** - Malama Market 11am-4pm. *Mauka Wing Level 2*
HALE'IWA STORE LOTS 203-5700
 • **Sat** - Live Hawaiian entertainment from 2 - 4pm
INTERNATIONAL MARKET PLACE 921-0536
 • **MWF** - Ceremonial sunset lighting of Lamaku Torch Tower
 • **MWF** - Sunset Stories Hula Show, 6pm. *Queens Court*
 • **1stTh** - Royal Hawaiian Band. Free. 12pm. *Queens Court*
 • **3rdTh** - Free Lei Making Workshop. 12pm. *Queens Court*
 • **4thSat** - Free Fitness. 9am. *Queens Court*
 • **1st3rdSu** - Free Fitness. 9am. *Queens Court*
ROYAL HAWAIIAN CENTER 922-2299
 • **Daily** - Heritage Room/Cultural Videos, *Helumoa Hale*
 • **Mon** - Free Ukelele Lessons 11pm, *Helumoa Hale*
 • **Tues** - Free Hula Lessons 11am, *Royal Grove*
 • **Wed** - Free Lauhala Weaving 11am, *Bldg A, Level 2*
 • **Thur** - Free Keiki Hula lessons 12pm, *Royal Grove*
 • **Fri** - Free Lei Making Class 12pm, *Bldg A, Level 2*
 • **Sat** - Hula Kahiko 5:30pm, *Royal Grove*
 • **TWThF** - Live Hawaiian Entertainment 5:30pm, *Royal Grove*
WAIKIKI BEACH WALK waikikibeachwalk.com
 • **Daily** - The Ukelele Store offers free lessons at 4:30pm
 • **Tues** - Ku Ha'aeo Hula Show. 4:30-6pm. *Plaza Stage*
 • **Sun** - Free hula lessons, 9-10am

conciierge

DISCOUNTS

- BALI OCEANFRONT**
 20% off all Food & Beverage. Hilton Hawaiian Village, 941-2254.
GUAVA SMOKED
 20% off food and drinks with hotel ID. 567 Kapahulu Ave, 2nd floor. Entrance/parking on Campbell Ave. 913-2100
HAWAIIAN MISSION HOUSES
 Free tour with hotel ID. 553 S. King Street. 447-3910.
IOLANI PALACE
 Free Admission with hotel ID. GA \$30. Kama'aina \$19.95. 364 S. King Street, Reservations Required. 522-0832.
MAUI DIVERS JEWELRY
 Receive 20% off every purchase at any location. Hotel ID or business card is required for verification. Cannot be combined with other discounts or promotions. 946-2929.
RUTH'S CHRIS STEAK HOUSE
 Complimentary Appetizer valued up to \$22 with the purchase of 2 entrees. Waikiki Beach Walk, 440-7910. Restaurant Row, 599-3860.
SAN PAOLO PIZZA AND WINE
 20% off food and drinks with hotel ID. Not combinable with any other discounts. 1765 Ala Moana Blvd. 425-5396

You will be required to show Hotel ID or business card to claim offer. Magazine not needed. Just mention offer when presenting hotel ID. Discounts available to Guest Service Professionals ONLY. Not valid with other promotions or special offers. A minimum 20% gratuity on original order requested for all food offers.

The Oahu Concierge is printed monthly and direct mailed FREE to all Oahu Concierge, Hospitality & Activity Professionals.
Subscriptions available to non-industry at \$25 per year.

C O N T A C T
Davis Media
Ph: (808) 225-8229

Website: www.OahuConcierge.com

ADDRESS & NAME CHANGES / ADDITIONS
We do not take changes via telephone. All changes to mailing list **must be submitted in writing** by the 16th of the month to make the next issue, email is preferred.

S T A F F

PUBLISHER & EDITOR Pam Davis
publisher@oahuconcierge.com

DESIGN
Coreiya Design

The Oahu Concierge
4348 Waialae Avenue, #185
Honolulu, Hawaii 96816

PRSR STD
US Postage Paid
TRADE MEDIA HUI



MORE CHEFS MORE FLAVOR

- BANZAI BURGER
- CRACKIN' KITCHEN
- EATING HOUSE 1849
by Chef Roy Yamaguchi
- HERRINGBONE
- KONA COFFEE
PURVEYORS
- KUHIO AVE FOOD HALL
- LA PINA CANTINA
- LILIHA BAKERY
- MITSUWA MARKETPLACE
Japanese Market
- MOANI WAIKĪKĪ
- SKYBOX TAPHOUSE
- SHOREFYRE
- STRIPSTEAK WAIKĪKĪ
by Chef Michael Mina
- UNCLE SHARKII POKE BAR



HAPPY HOUR 3-6PM DAILY
at participating restaurants

GRAND LĀNAI
INTERNATIONAL MARKET PLACE

2330 Kalākaua Avenue, Waikīkī