

**Unteathered. Unobstructed.**

## **Base Shoe Railings by Highrise Products**

*Limitless options for unlimited views.*



## Base Shoe Options



The base shoe is among the more adaptable railing systems provided by HRP. Typically, stock products are sold due to the design's simplicity. However, since architecture is not universal, and each project differs, a one-size-fits-all approach doesn't always work. HRP eliminates the hassle of diagnosing and fixing problems that arise when stock items are incompatible. Through our in-house fabrication, we can customize, adjust lengths, reinforce, and modify off-the-shelf products before troubleshooting any issues.



## OPTIONAL GRAB RAIL PROFILES



## OPTIONAL TOP CAP PROFILES



**TR1**  
UChannel

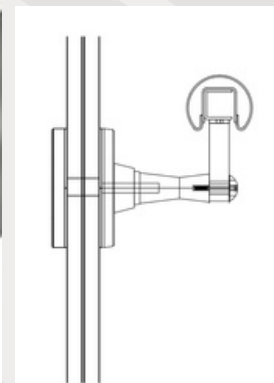
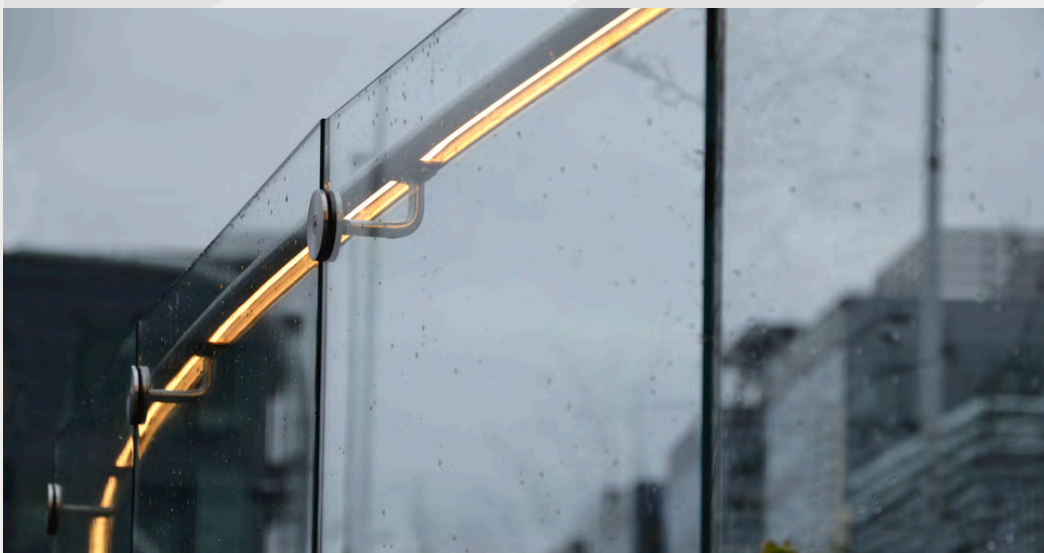


**TR2**  
Shaped

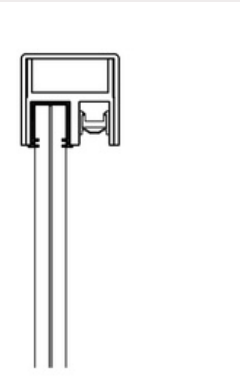


**TR3**  
LED

## INTEGRATED LIGHTING-READY OPTIONS

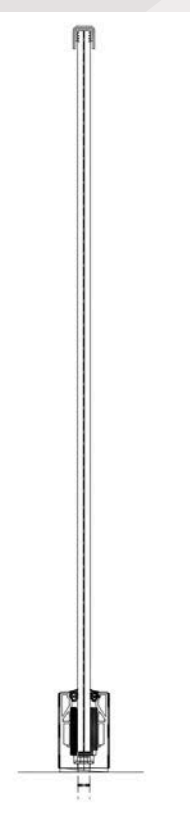


**Grab  
Rail**

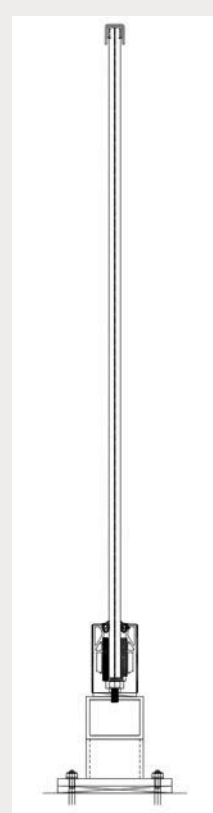


**Top  
Cap**

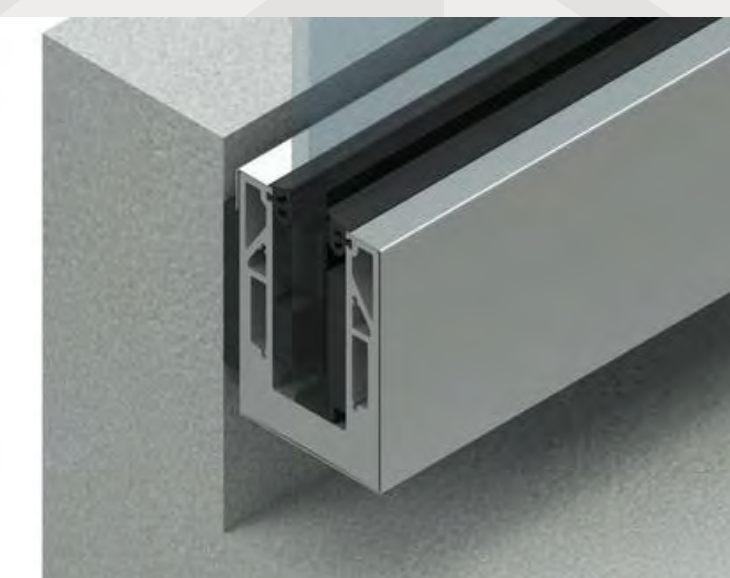
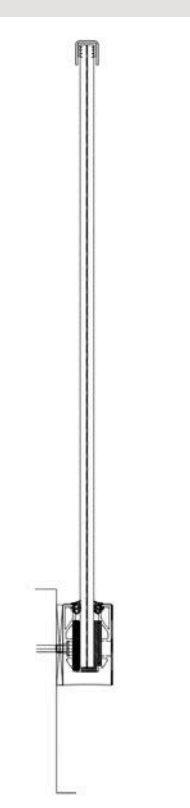
## BOTTOM "BASE SHOE" MOUNTING



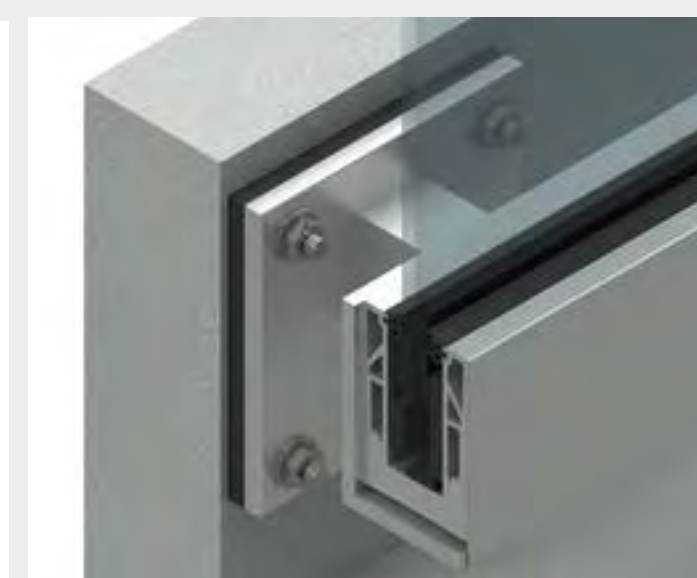
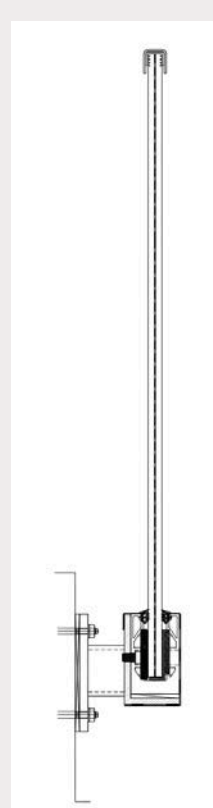
**BS1**  
Top Mount (Concrete)



**BS2**  
Top Mount (Steel)



**BS3**  
Face Mount (Concrete)



**BS4**  
Face Mount (Steel)



Finishes



With a wide range of colors and finishes, durability and weatherability, Architectural Powder Coating is the ideal coating option for high traffic areas like architectural railing.

Pure fluoropolymer powder coating resin not only meets all AAMA specifications, but is environmentally responsible and can help contribute to LEED points.

- Average material efficiency up to 95%
- Single coat application of 2-4 mil thickness
- Overspray can be reclaimed
- One coat application\*
- Solvent-Free
- No hazardous waste generated
- No volatile organic compounds
- Environmentally friendly and not hazardous to spray operator

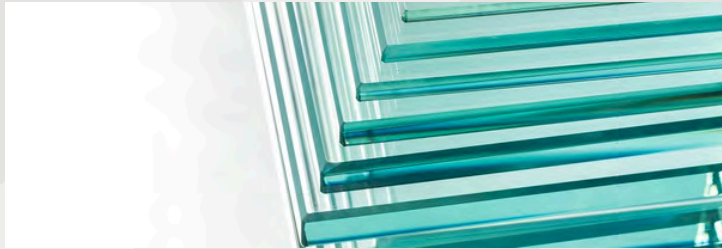
*\*Coastal regions may require more coats and/or primer*

Infill



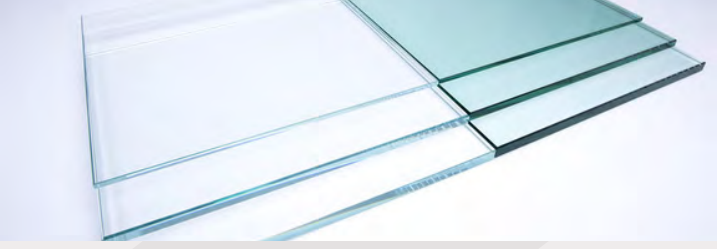
Clear Tempered and Low Iron infill options are compatible with both interlayer bonding (or laminated glass) options: PVB or SGP.

The intention of an interlayer bonding option is for the glass to remain in the opening should a breakage occur with a laminated glass panel. Adding either PVB or SGP will help meet strict glazing safety requirements.



**HRP-I1**  
**CLEAR TEMPERED\***  
Clear tempered glass is the standard option offered by HRP.

*\*Both Clear Tempered and Low Iron are compatible with either PVB or SGP.*  
**PVB**, or *Polyvinyl Butyral*, is a flexible resin offering strong bonding, optical clarity and flexibility.  
**SGP**, or *SentryGlas Plus*, is a stronger inner bonding layer, offering up to 5 times the strength and 100 times the stiffness of PVB.



**HRP-I2**  
**LOW IRON\***  
Low Iron offers a upgraded, clearer view.



**HRP-I3**  
**PRINTED/PRIVACY GLASS**  
Highrise Products offers a large range of printed or privacy glass options to customize your project.



**HRP-I4**  
**BIRD-SAFE GLASS**  
In cities throughout the US, the trend of opting for bird-safe glass, is fast becoming building code.  
Highrise Products offers UV, Etched or Fritted glass, all meeting the common 2"x4" requirement.



Wanda  
(The St. Regis, Chicago)

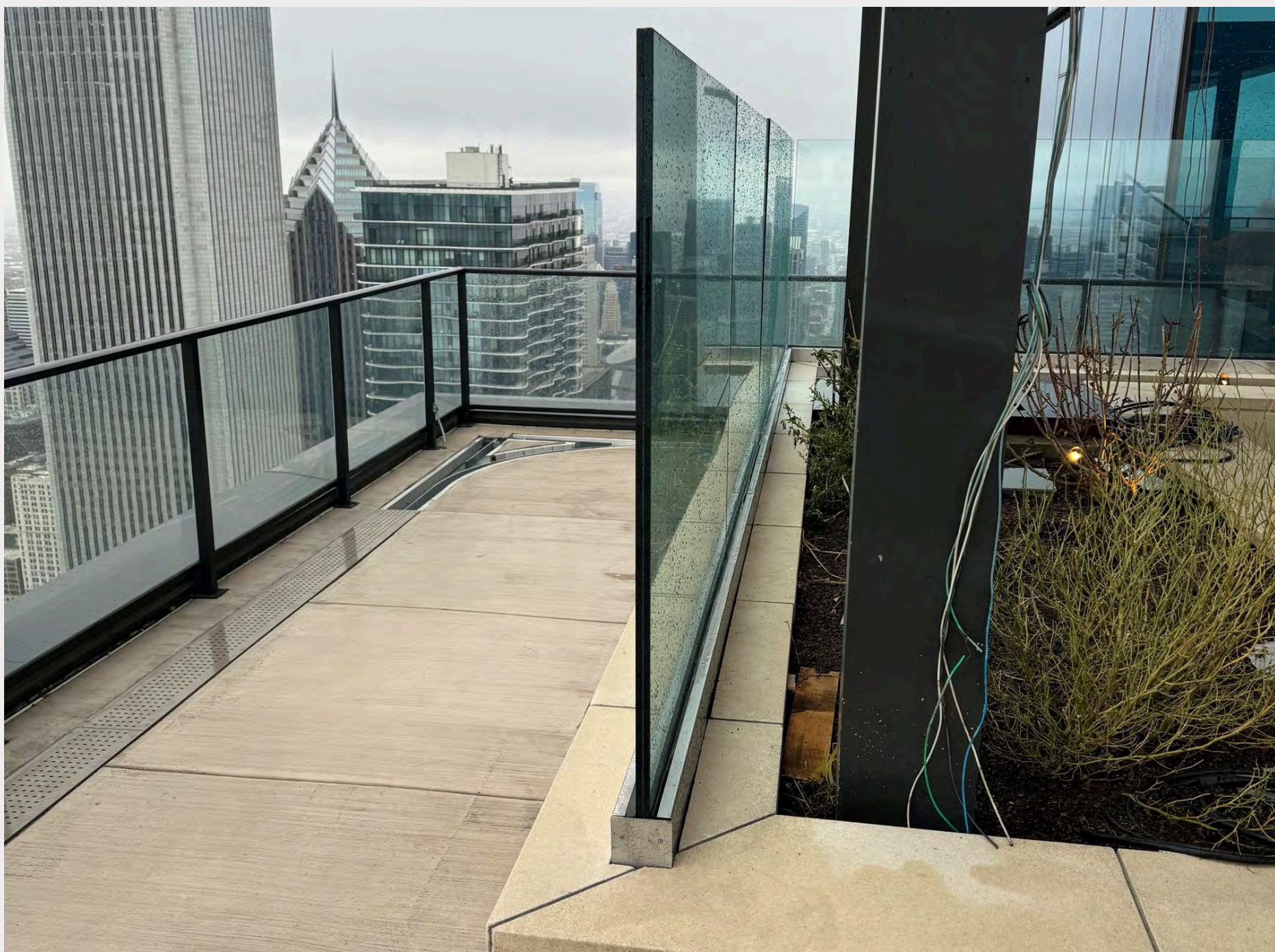
At 365 m, towering over downtown Chicago, The St. Regis is the tallest woman-designed building in the world (*Jeanne Gang, Studio Gang Architects*).

**Highrise Products** fabricated and installed a total of 4,200 linear ft of glass balcony railing and 1,800 linear ft of glass amenity deck railing.

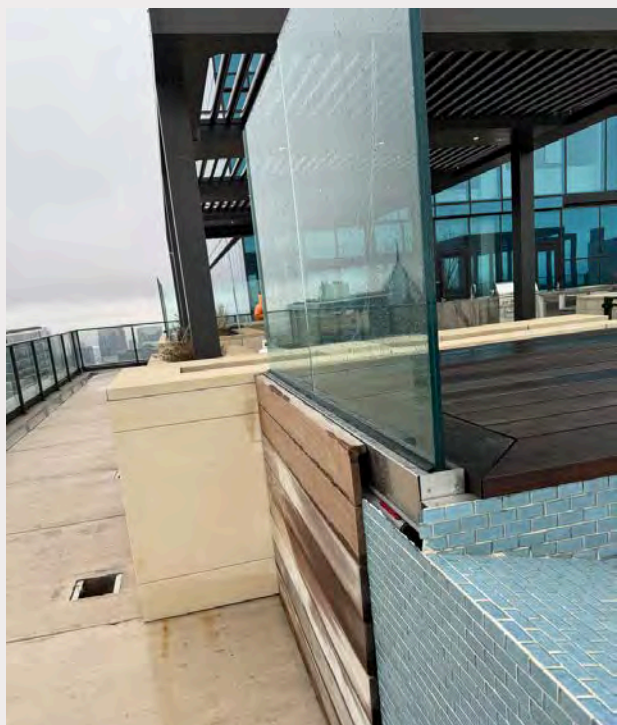
In 2023, **HRP** was contracted again to perform additional work on the private residence amenity deck on level 71 (shown on back cover).







## Project Spotlight



## Residences at St. Regis - Floor 71

**Location:** E. Wacker Drive, Riverfront Chicago

**Status:** Building completed in 2020, Floor 71 completed in 2023

**Stats:** #3 tallest skyscraper in Chicago, #11 tallest in North America

**Building Scope:** Floor 71 is a private residence, spanning the 71st floor of both spires 2 and 3. The entire rooftop of spire 2, a private 7,600 sf patio with direct access to spire 3's condo, boasts a magnificent view of Lake Michigan from 800 ft above.

**Highrise Products Scope:** When the condo on level 71 of the Residences at St. Regis was purchased in 2023, the new owner's vision for the patio included a solution for the high wind gusts associated with lakefront living, that wouldn't interfere with the view. Having already provided 6,000 linear feet of rail system throughout the rest of the building, Highrise Products was the clear choice to furnish the desired fencing that needed to be able to meet the wind load engineering challenges associated with wind gusts in excess of 125 mph. The patio includes multiple fencing styles; windscreen, glass and base shoe railing showcase the pool and seating areas.



September 2024



Highrise Products, LLC.  
3352 Southway Drive  
St. Cloud, MN 56301  
612-695-7476  
[www.highriseproducts.com](http://www.highriseproducts.com)