



**HIGH**RISE  
PRODUCTS

**HIGHRISE PRODUCTS**

Our mission is not just a statement—it's a promise to make a difference.



# ABOUT US

At Highrise Products, we strongly believe that our essence is reflected in our work. This is why two out of our three core values revolve around people. Through prioritizing the growth, development, engagement, and well-being of our employees, we cultivate an environment that encourages innovation, creativity and a secure space for taking calculated risks. We are driven by a purpose that transcends mere business transactions.

Our mission is to create lasting impact and meaningful value for all stakeholders including customers, business partners as well as employees. The outcome is a reputation, service, and product that we proudly stand behind. With uncompromised quality and value beyond profit, **Highrise Products is your single-source project partner.**

## PLANNING

- Design Development
- Rapid Prototyping
- Pre-Engineering
- Custom Die Conception
- Budget Development



## FABRICATION

- Metal Processing
- Welding
- Finishing
- Assembly



## PROJECT MANAGEMENT

- Shop Drawings
- Schedule of Values
- Strategic Partnerships
- Constant Communication
- Delivery Coordination
- Installation Support








## GLASS RAILING SYSTEMS

- Made from structural grade alloys
- Meets minimum thickness required for building lightning plans
- Clear sight-lines with a classic look
- Nine Top-Rail shape options for a personalized balcony experience
- If your creativity surpasses our options, we can craft a personalized profile for you



## WINDSCREEN SYSTEMS

- Made from structural grade alloys
- Meets minimum thickness required for building lightning plans
- Designed to meet restrictive wind-loads, perfect for high rise outdoor areas
- Achieve heights up to 8 feet
- Endless combinations - fin profiles, standoff, infill and mount



## BASE SHOE SYSTEMS

- In-house fabrication means you are not relegated to stock sized-products, saving time and money
- Unique features like LED ready hand and grab rails offer more customization options
- Base mounting compatible with both steel and concrete



## PICKET RAILING SYSTEMS

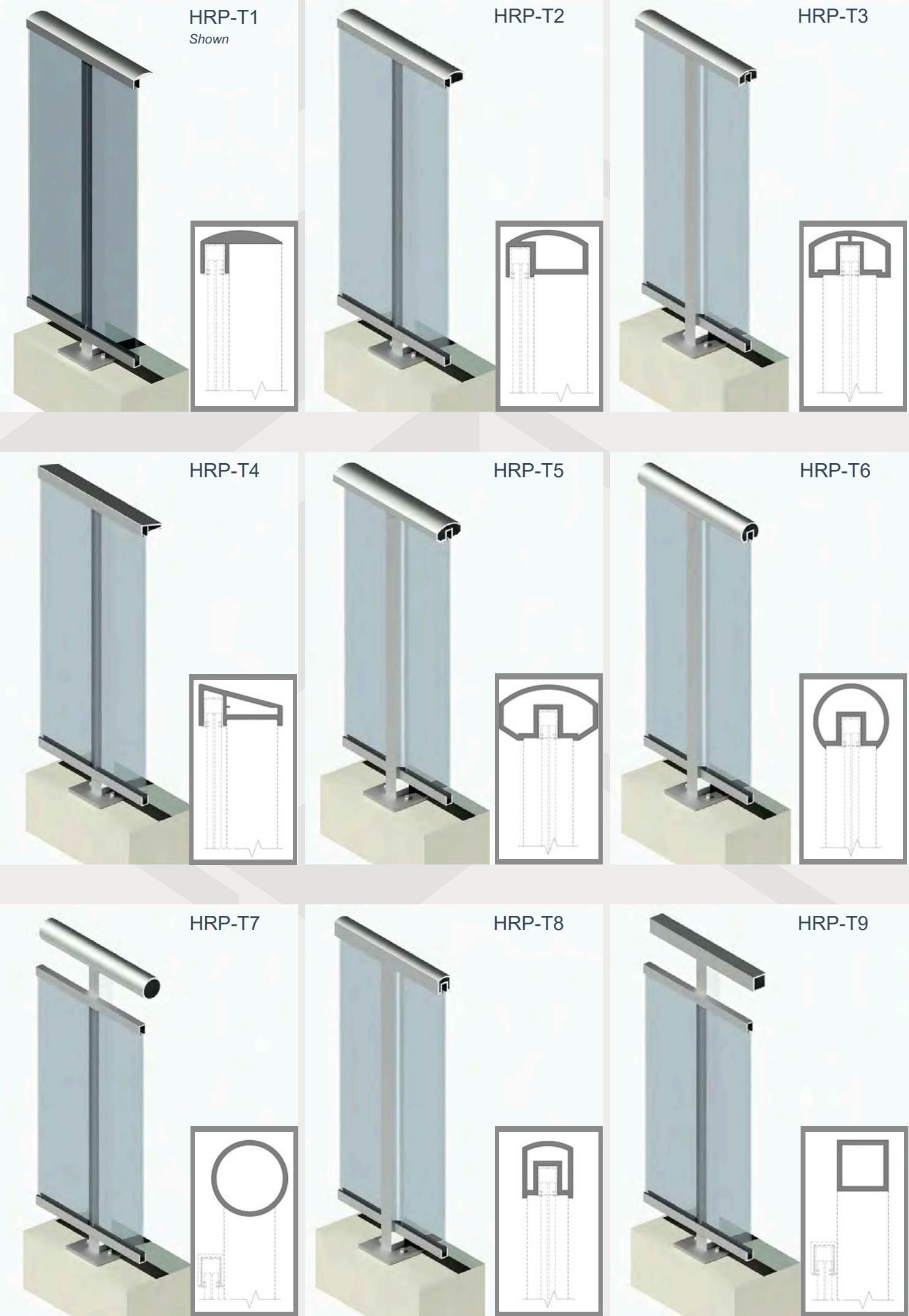
- Made from structural grade alloys
- Meets minimum thickness required for building lightning plans
- Unique Slab Cover Mount option, exclusive to Highrise Products
- Fully Customizable - if traditional pickets aren't for you, replace with cables, metal grating or panels



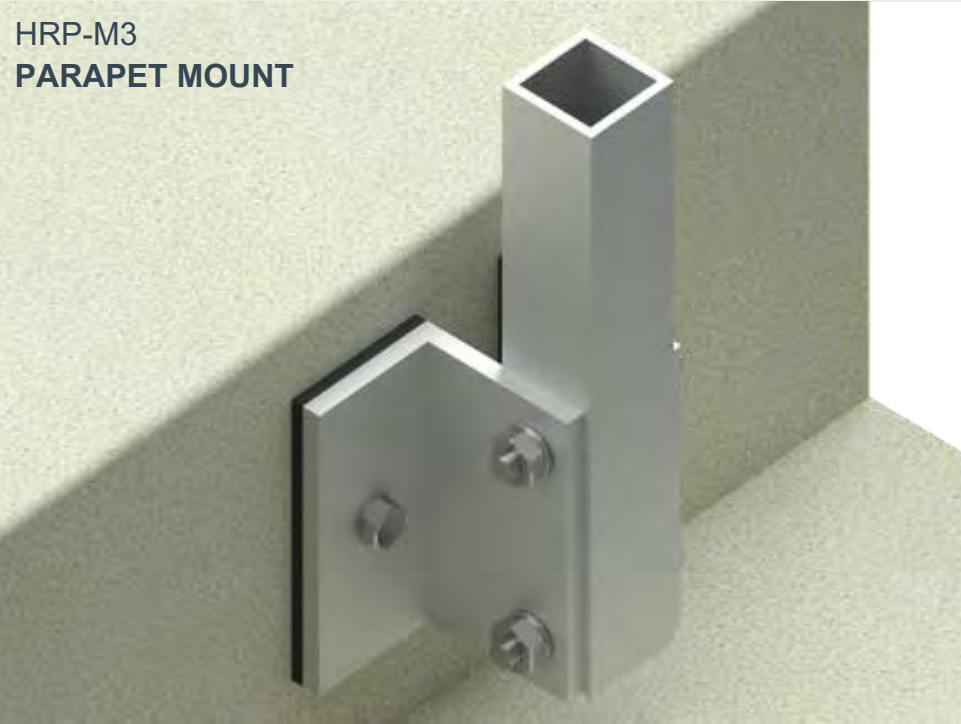
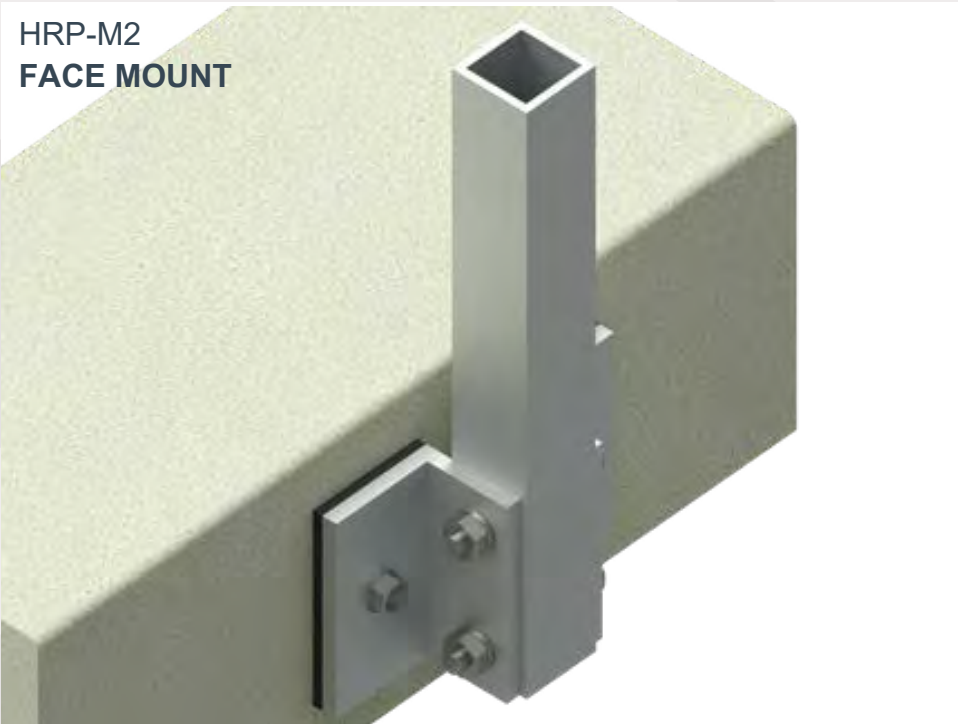
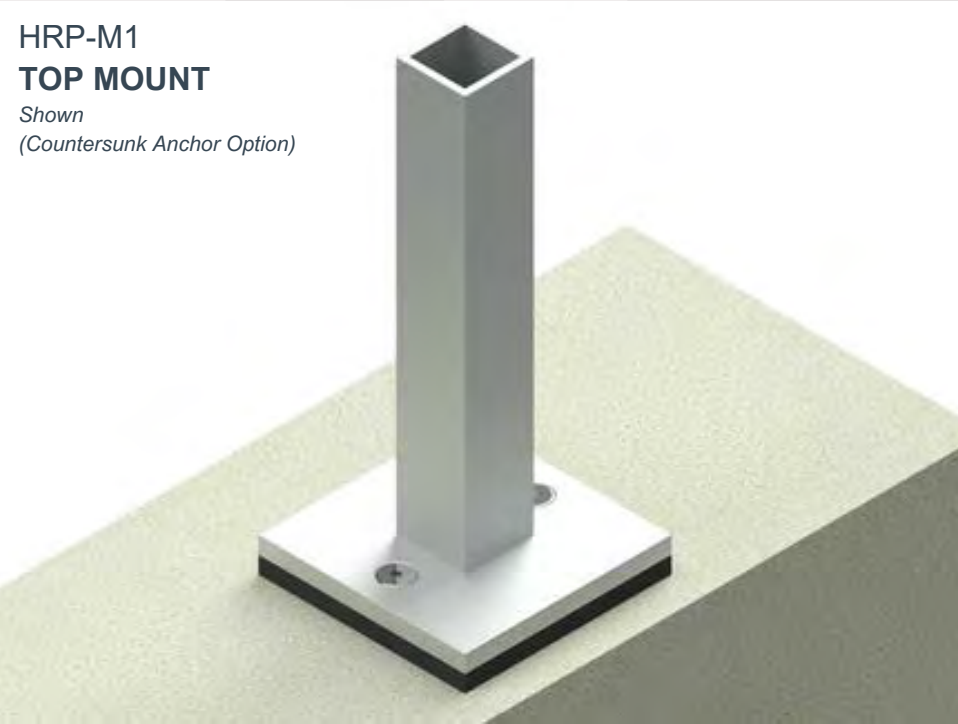
# GLASS RAILING SYSTEM



## TOP RAIL PROFILES

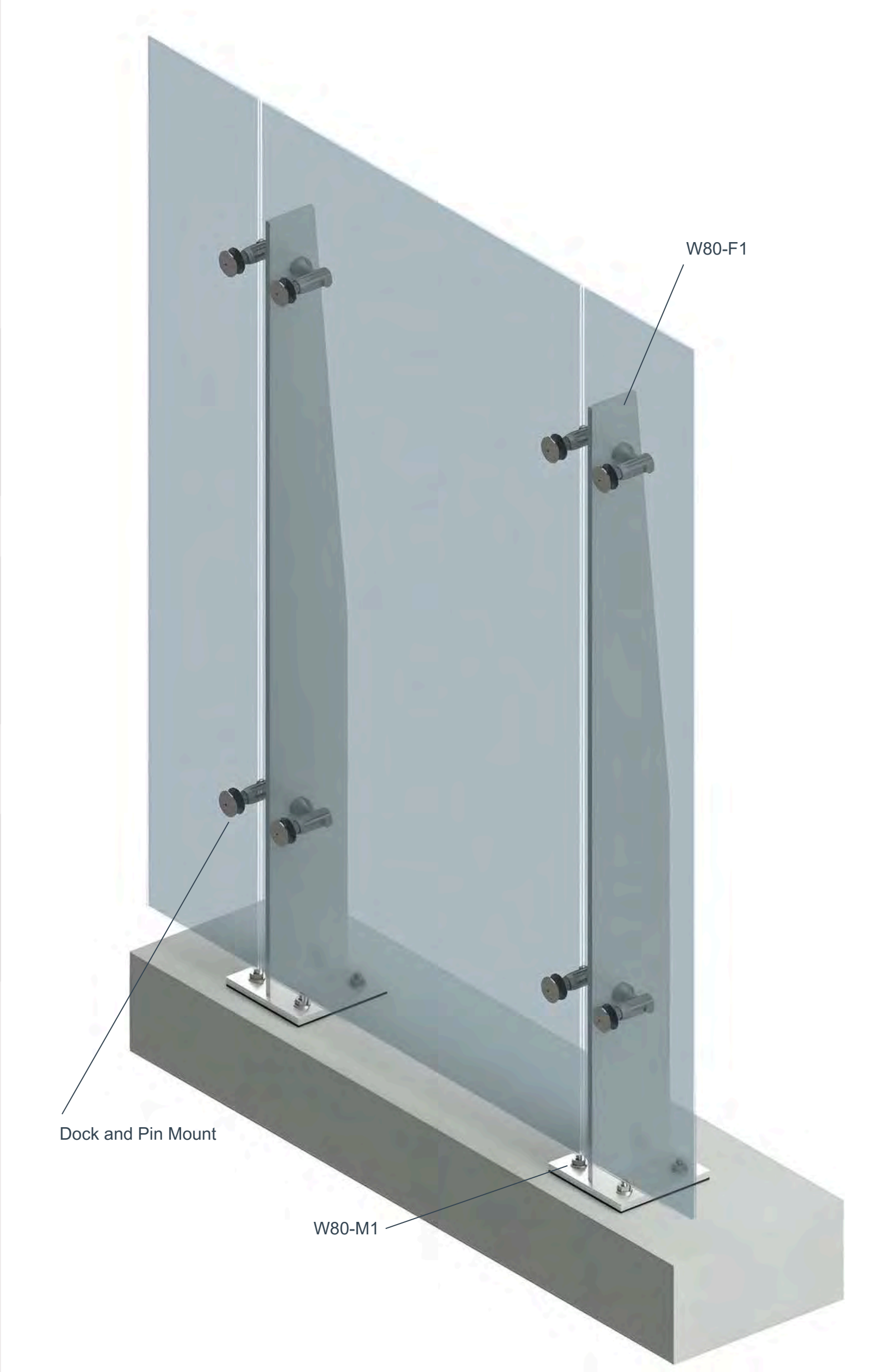


## MOUNT OPTIONS





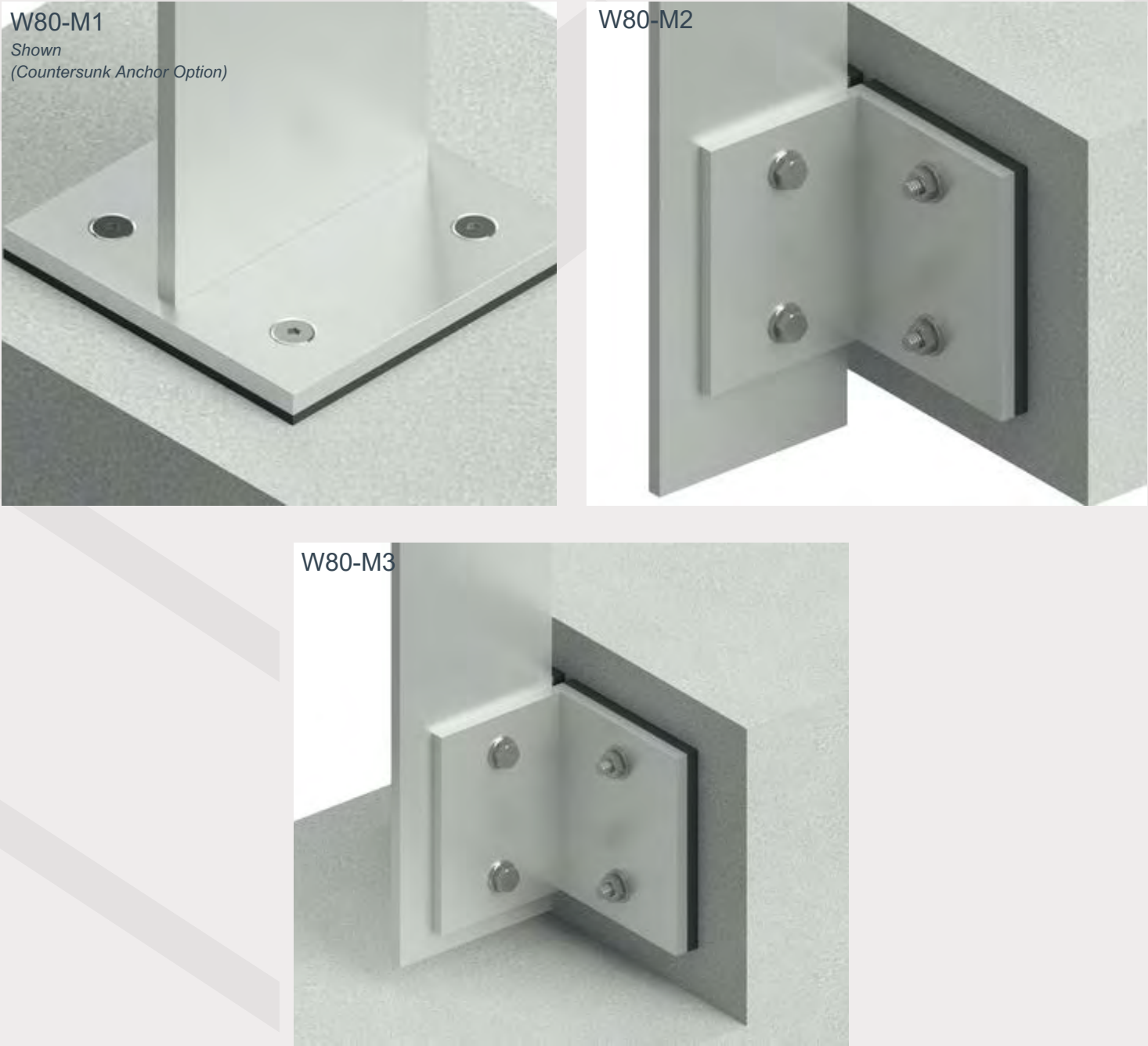
# WINDSCREEN SYSTEM



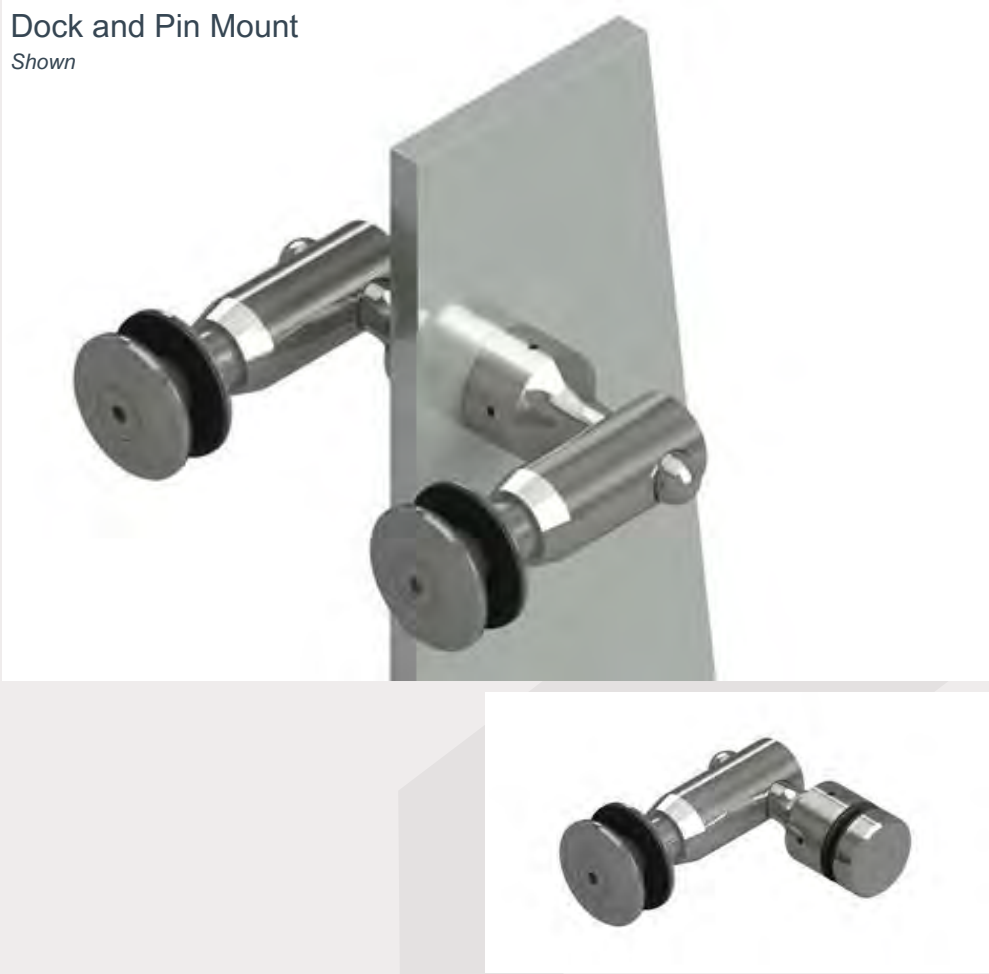
## FIN PROFILES



## MOUNT OPTIONS

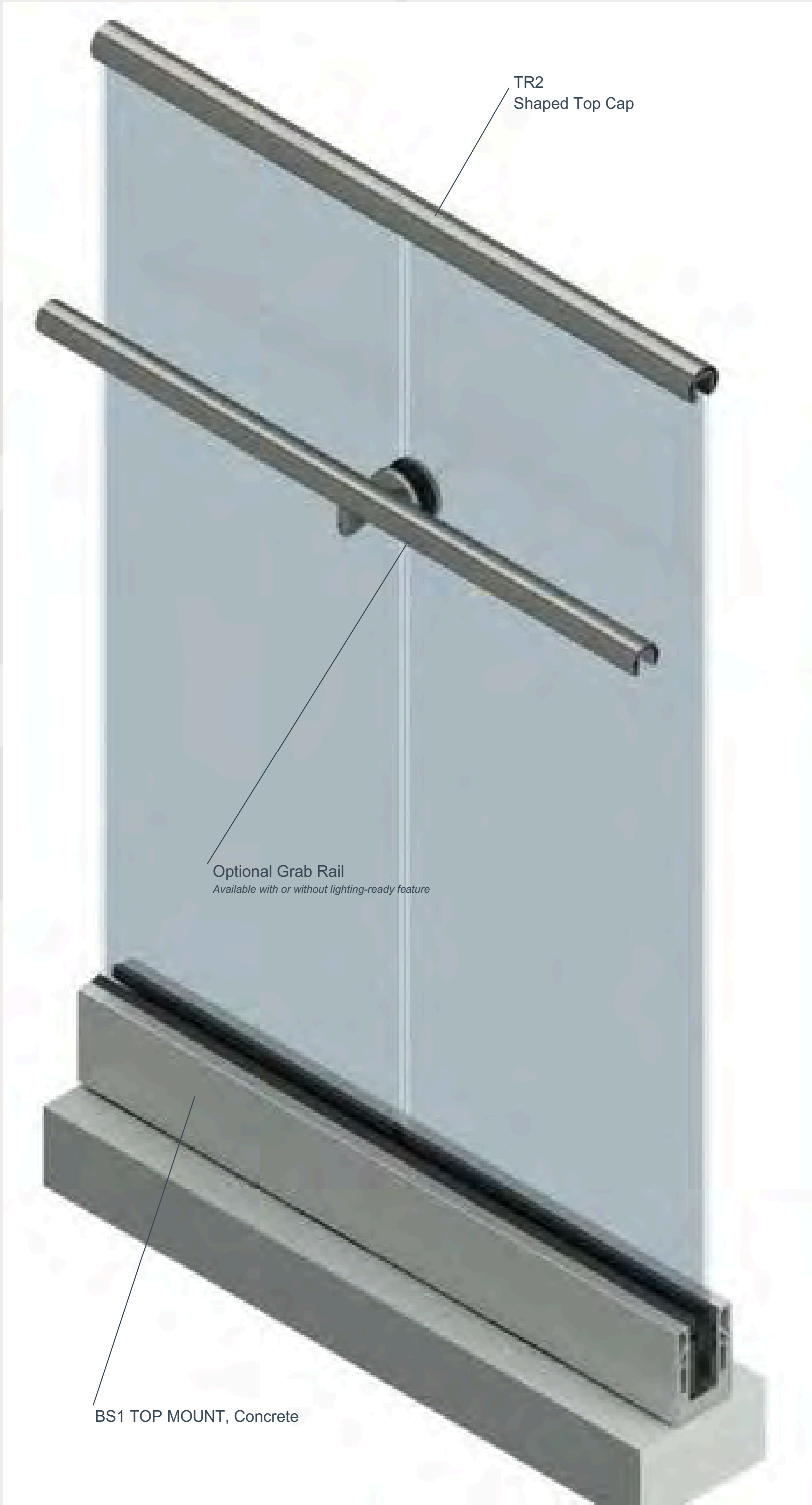


## GLASS MOUNTING





# BASE SHOE SYSTEM



## OPTIONAL TOP CAP PROFILES



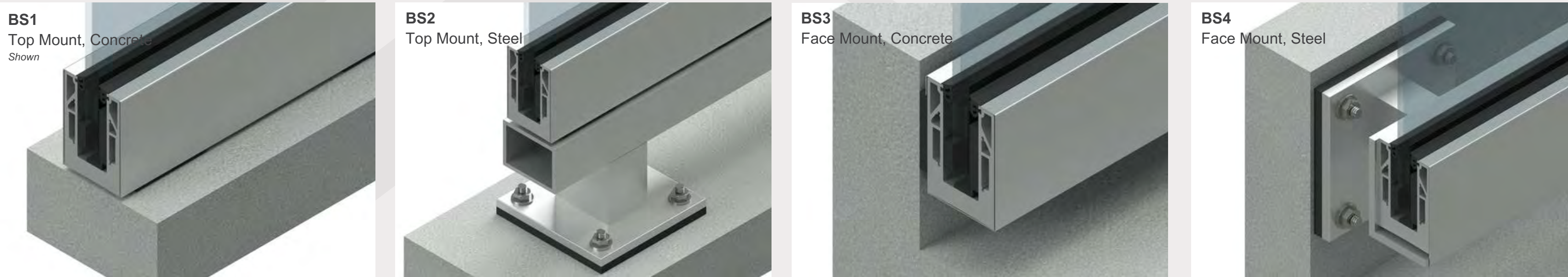
## OPTIONAL GRAB RAIL PROFILES



## OPTIONAL INTEGRATED LIGHTING-READY FEATURE



## GLASS MOUNTING





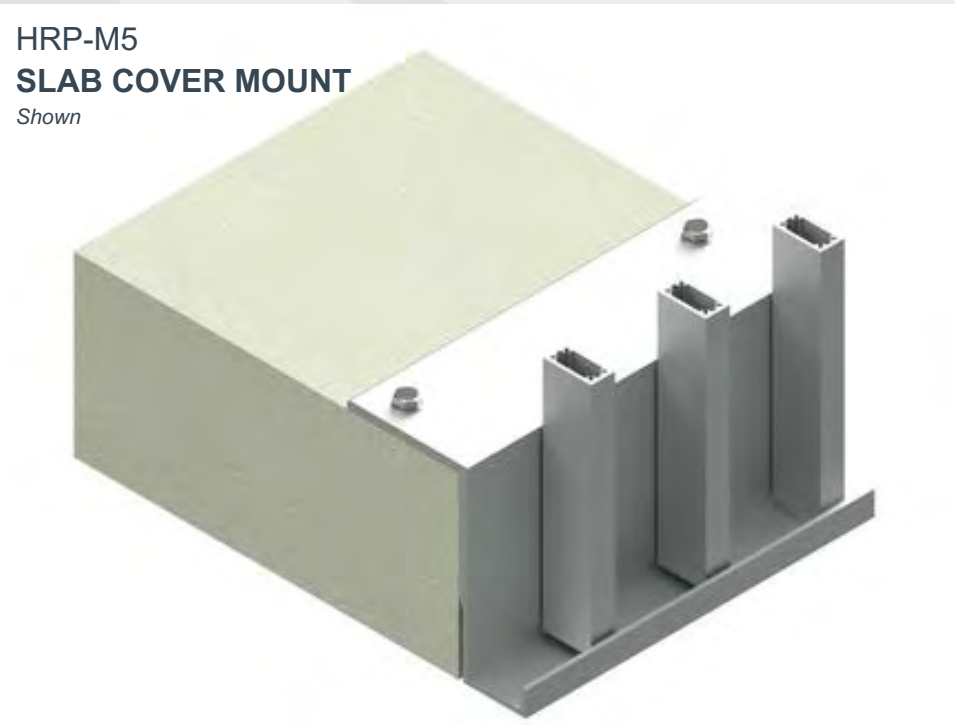
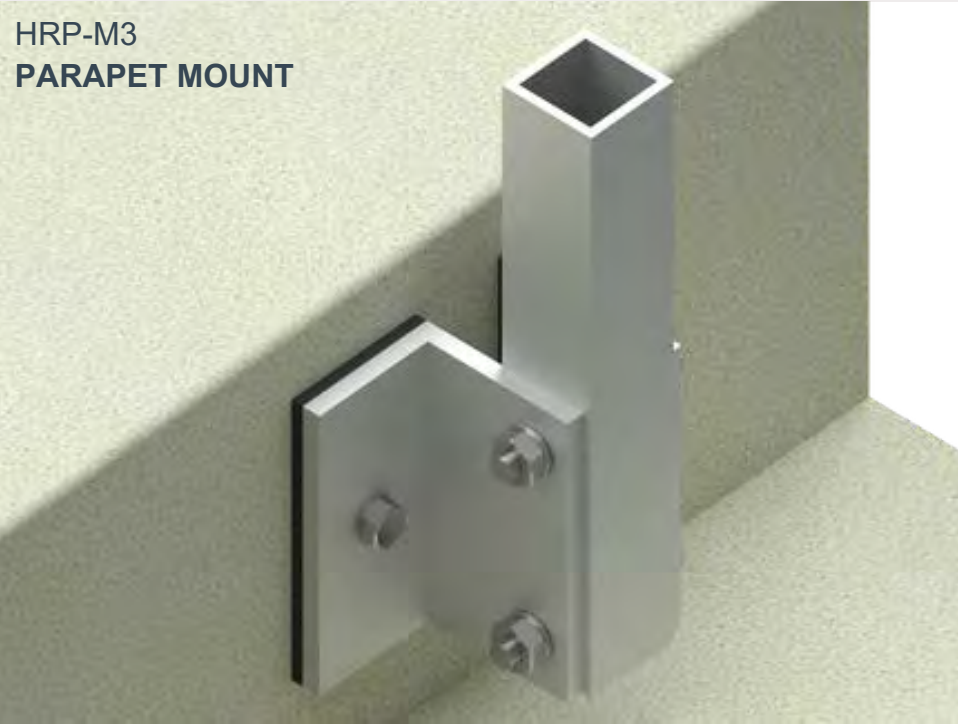
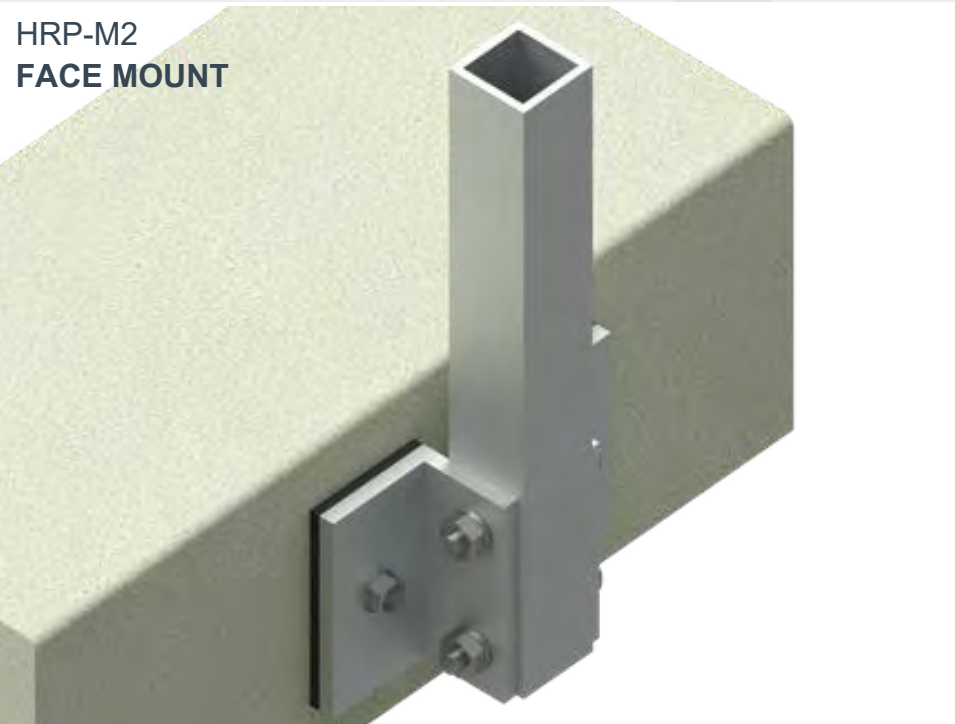
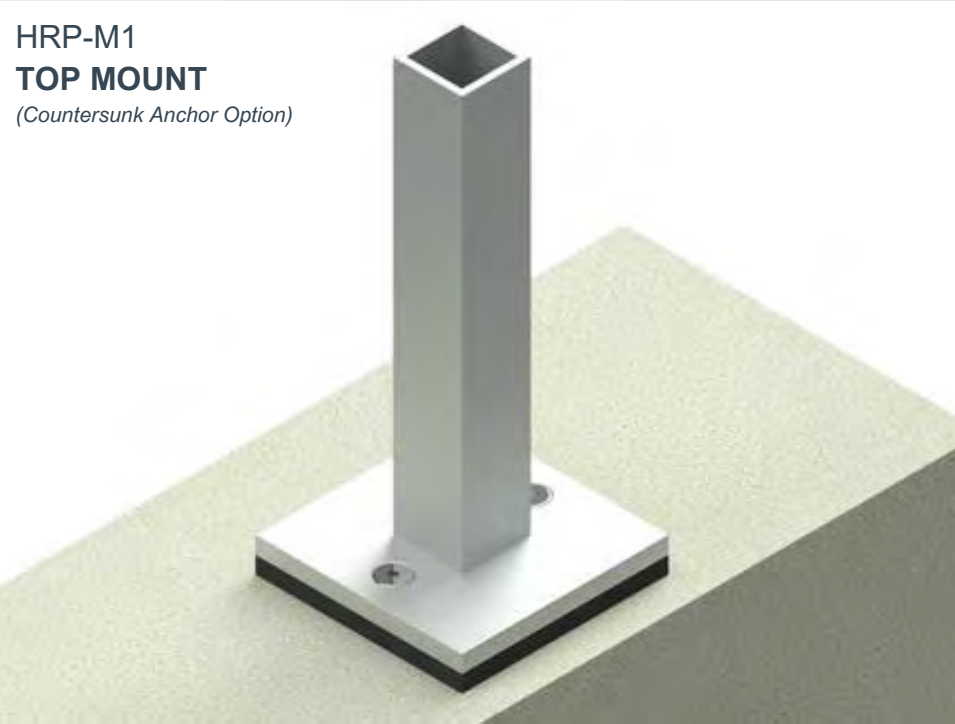
# PICKET RAILING SYSTEM



## TOP RAIL PROFILES



## MOUNT OPTIONS





# WHAT MORE COULD YOU ASK FOR?

**RAILINGS  
WINDSCREENS  
STRUCTURAL STEEL  
METAL PANELS**

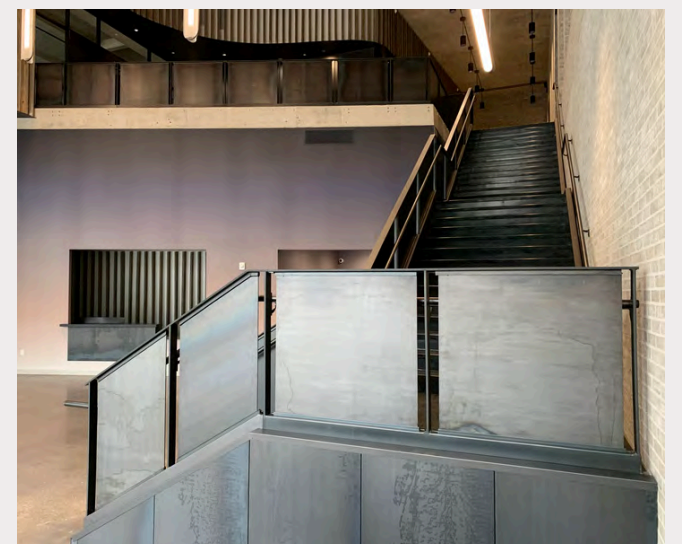
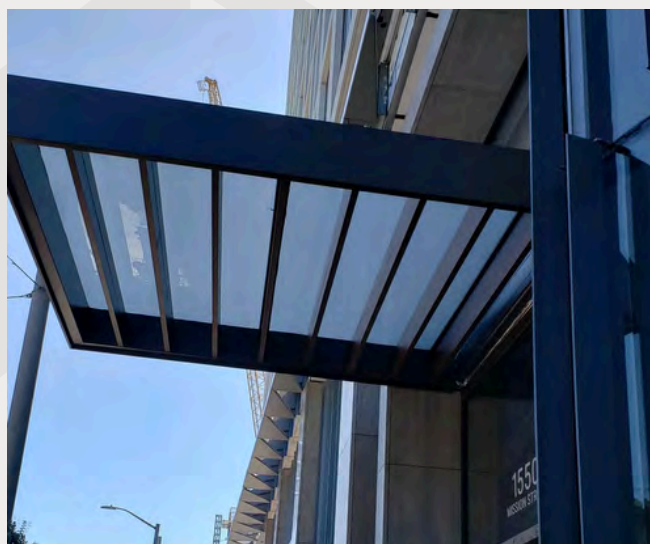
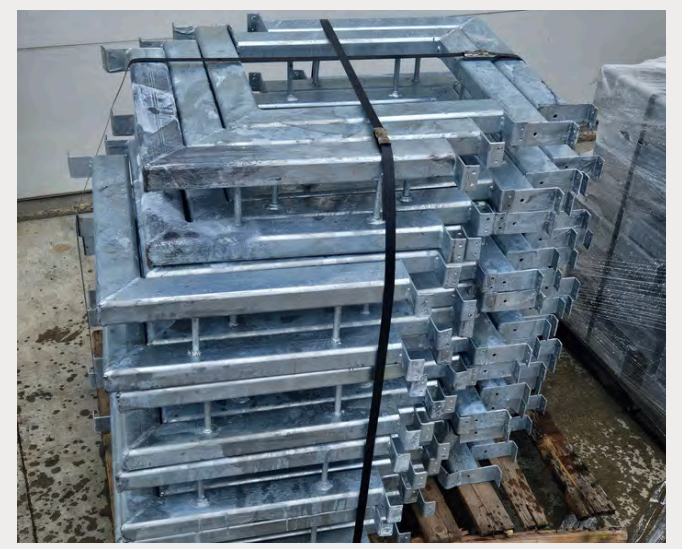
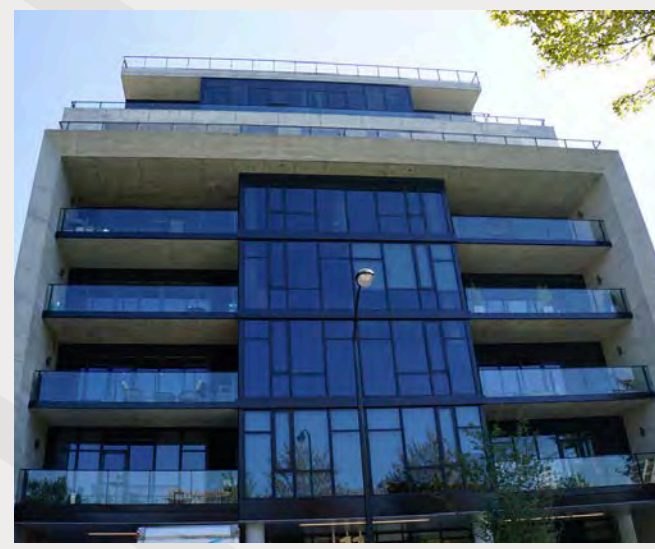
**HIGHRISE PRODUCTS IS YOUR SINGLE-SOURCE PROJECT PARTNER**, lending support in addressing any project gaps that may arise. We often receive requests to fill the voids left by other trades, especially in areas overlooked between different scopes. This could involve integrating slab covers into our railings to match the building's aesthetics or completing unfinished sections. While our primary focus is railing manufacturing, our expertise allows us to serve as a valuable architectural metal collaborator, offering prompt solutions.

We also handle the less glamorous aspects of highrise construction. While our specialty is creating sturdy, safe, and stylish railing products, we take pride in assisting with the less visible elements that may go unnoticed. Embracing a unified fabrication approach, we support our project partners by providing items like steel embeds, structural steel supports for canopies, and wall panel suspension systems.

From standard installation product needs to artistic finishing touches and everything in between, think Highrise Products! With over 100 years of experience in metal fabrication, we are here to assist you.

**FROM THE DOWN AND DIRTY ITEMS LIKE  
CONCRETE EMBEDS  
TO ARTISTIC FINISHING TOUCHES  
AND EVERYTHING IN BETWEEN**

- Project Management
- Shop Drawings
- Stamped Engineering Calculations
- Concrete Embeds
- Slab Covers
- Metal Infill Panels
- Metal Wall Panel Systems
- Sunshades
- Decorative Metals
- Per-Floor/Kit Packaging
- Installation Training/Supervision
- Full Installation



September 2024

Highrise Products, LLC.  
3352 Southway Drive | St. Cloud, MN 56301  
612-695-7476 | [www.highriseproducts.com](http://www.highriseproducts.com)