



Commercial High Speed Oven G1

208/240V- 60Hz, 6000W

QUICK START GUIDE



1



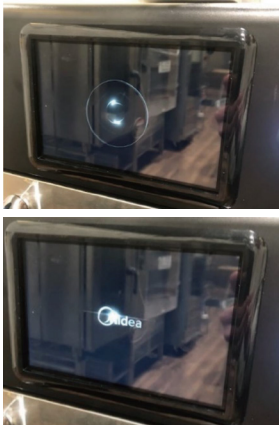
Place desired Accessory(ies) in the cavity.

2



To turn on the oven,
Press and Hold the Start button
on the front panel (2 Sec)

3



Start up screen will appear
(Swirl and Midea Logo with Music)

4



PreHeat screen will appear - tap desired pre-heat temp (Example: 500F)

5

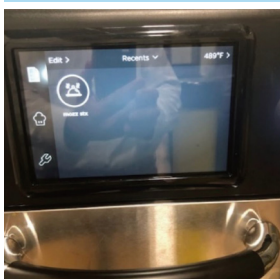


Screen will show PreHeat progress by % completed. Times: (300F - 6:00, 400F - 9:45, 500F - 15:00)

6

When 100% is reached, this screen will appear. Oven is now preheated. Press "Start"

7



The "Recents" home screen will display.

- EXAMPLE: To Cook/Programme the HSO oven to heat an 8" Sub Sandwich with Meat & Cheese: Temperature: 495F
Time - 00:50
MW Power - 60%
Fan Speed - 90%

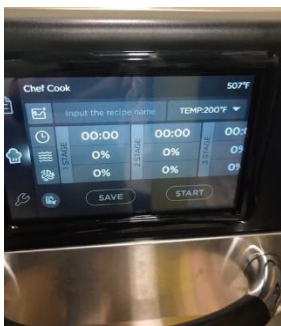
8



Press the “Chef Cook” icon in the middle of the left of the screen.

- a.Press “Input the PWD” (Password) on the screen
- b.Keyboard will appear to enter PWD (flashtune or Password depending on version)
- c.Press “Check” icon on the keyboard (to “enter”)
 - i.(PWD was set when the oven was 1st plugged in (new))

9



Cooking/Programming Function Screen will appear.

10



In the Top Right corner, press the TEMP down Caret (▼)

11



Tap or Slide TEMP Control bar to desired Temperature. "Use the +1 or -1 for small adjustments"

12



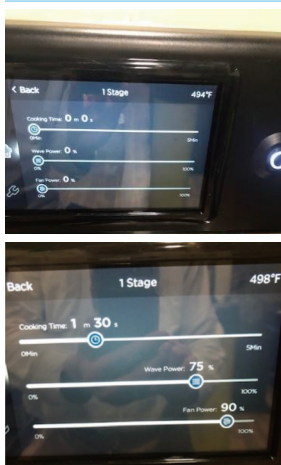
In the Top Right corner, press the TEMP UP Caret (▲) 495 is nowset

13



"Now Press "time" for the 1st stage"

14



3 Control Slides will appear – Set to:
 Time - 00:50
 MW Power - 60%
 Fan Speed - 90%

15



Press "Input Recipe Name", Keyboard will appear

16



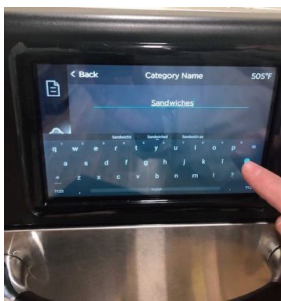
Enter the name of the Recipe and press “check” to enter.

17



Add Category

18



Type “Sandwiches” and press “Check” (Enter)

19

Follow Steps 1 - 7 to simply cook the sandwich you just entered.

Temperature: 495F

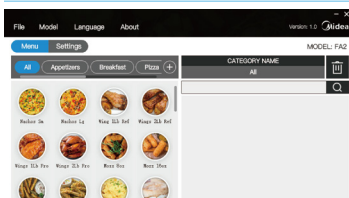
Time - 00:50

MW Power - 60%

Fan Speed - 90%

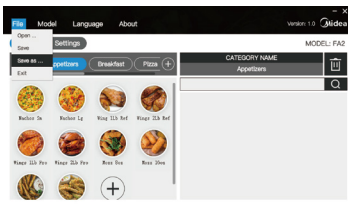
Note: the “Space Bar” is along the bottom of the keyboard - it says “English” on it.

20



Edit recipes and categories with the FlashTune program on your PC. When finished, “Drag and Drop” the saved file on to the USB drive you are using. Using “Save As” on the program will work to save it on the PC but not to the USB - must be copied to the USB from the folder.

21




Save the recipes on to the pc

22

Don't "Save As" the recipe directly into USB, simply save it on to the PC and drag it into your USB to upload

23

To Upload the recipes:

1. Drag and Drop the saved recipe file (.db) to the USB Memory Device
2. Press the "Setting" icon ()
3. Press "User Settings"
4. Input the password by pressing that area of the screen - the keyboard will appear and type "flashtune" - then press the small "check" mark on the keyboard to enter.
5. Press the USB window on the screen
6. Insert the USB into the port on the front right side of the oven. (contact on the USB drive should be oriented towards the operator)
7. Wait for the area next to "Recipes Upload" "Recipes Download" and "Firmware Update" to populate with "DISK_IMG".
7. Press "Recipes Upload"
8. Select the folder
9. If successful, folder will now show a circled "check mark" in the center.
10. Press the recipes icon and uploaded recipes will appear.

