



SLS

BAHIA BEACH  
RESIDENCES

# LUXURY RISING. INTRODUCING SLS BAHIA BEACH RESIDENCES.

LUJO EN SU MÁXIMO APOGEO.  
PRESENTAMOS SLS BAHÍA BEACH RESIDENCES.

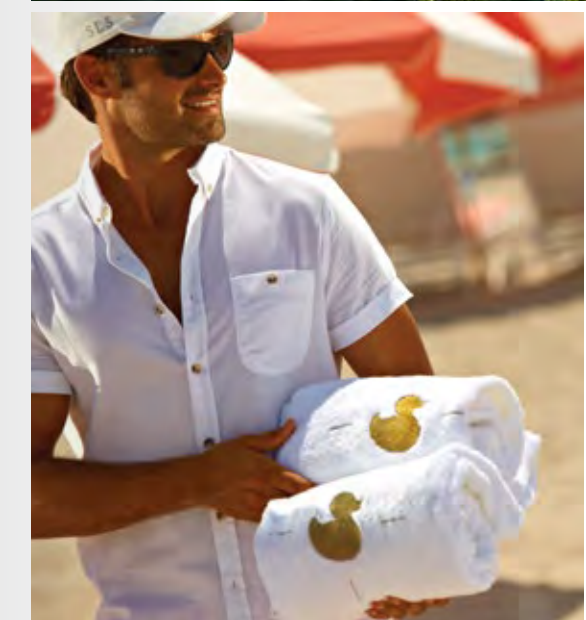


# LEISURE AND LUXURY. ALL WITHIN REACH.

LUJO Y EXCLUSIVIDAD A SU ALCANCE.



**SLS**  
BAHIA BEACH  
RESIDENCES



## IN THE HEART OF PUERTO CANCÚN

This modern tower is located within a 24-hour gated community, with exclusive access to a private beach club, its restaurants and its own marina with 175 slips accommodating all sizes and kinds of boats. Located in Puerto Cancún, residents can enjoy its 18-hole Tom Weiskopf golf course, more than 50,000 m<sup>2</sup> of shopping featuring more than 100 shops and boutiques, a variety of enticing restaurants, a 16-theater cinema and unlimited 24-hour entertainment.

## EN EL CORAZÓN DE PUERTO CANCÚN

Esta moderna torre se encuentra ubicada en la comunidad cerrada de Novo Cancún, con acceso exclusivo al club de playa privado, restaurantes, y a su propia marina con capacidad para 175 embarcaciones de todo tipo y tamaño. Ubicada en el corazón de Puerto Cancún, sus residentes pueden disfrutar de su campo de golf de 18 hoyos diseñado por Tom Weiskopf, un centro comercial de más de 50,000 m<sup>2</sup> con más de 100 tiendas y boutiques, una amplia variedad de restaurantes, un complejo de 16 salas de cine y entretenimiento ilimitado las 24hrs del día.

# MODERN DESIGN. INDULGENT AMENITIES.

DISEÑO MODERNO. AMENIDADES EXTRAORDINARIAS.

## BUILDING FEATURES

- Stellar 20-story tower with interiors designed by renowned Mexico City-based firm Sofia Aspe Interiors.
- Collection of museum-quality artwork in common areas selected by the Related Group's expert art curator.
- Serene pool area with pool cabanas, towel service and views overlooking the marina.
- Fitness Center with equipment for every type of workout. Enjoy state-of-the-art cardio and weight training machines, as well as cardio machines with personal TV screens and music options. Exercise "unplugged" with free weights, stretching mats, Pilates balls and yoga mats.
- Residents enjoy exclusive access to Ciel Spa at neighboring SLS Cancun featuring 1400 square feet of treatment and massage beds. Experience showers and herbal steam rooms are also available.
- The Club Room Lounge caters to residents who wish to entertain family and friends outside of their residence. Amenities include flat-screen televisions, a Bluetooth-capable built-in speaker system and a bar.
- Enjoy movie night in style with family and friends in the Media Room.
- Assigned self-parking and 24-hour valet parking services. All residences come with two parking spaces.
- Concierge and Hotel Services are available through SLS Cancun Hotel. Residents can request room service, housekeeping, laundry services and more.
- Teen Lounge room.
- Yoga room.
- Snack bar at the Paseo.

## CARACTERÍSTICAS DEL EDIFICIO

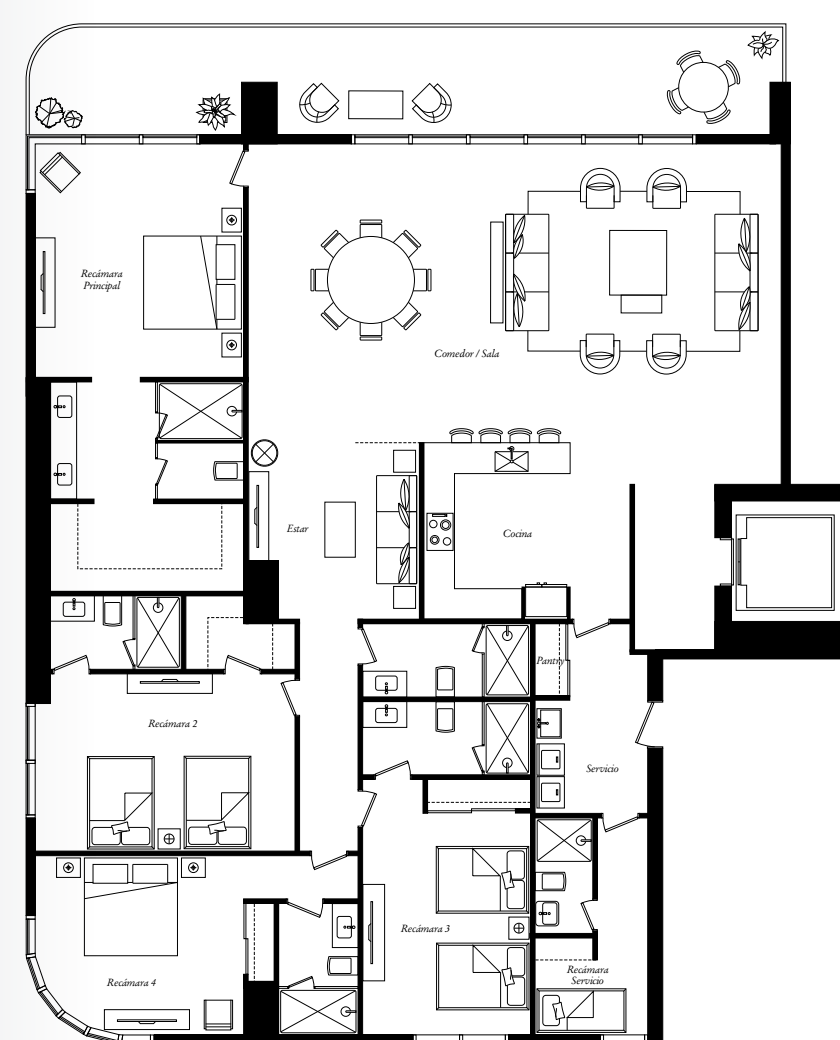
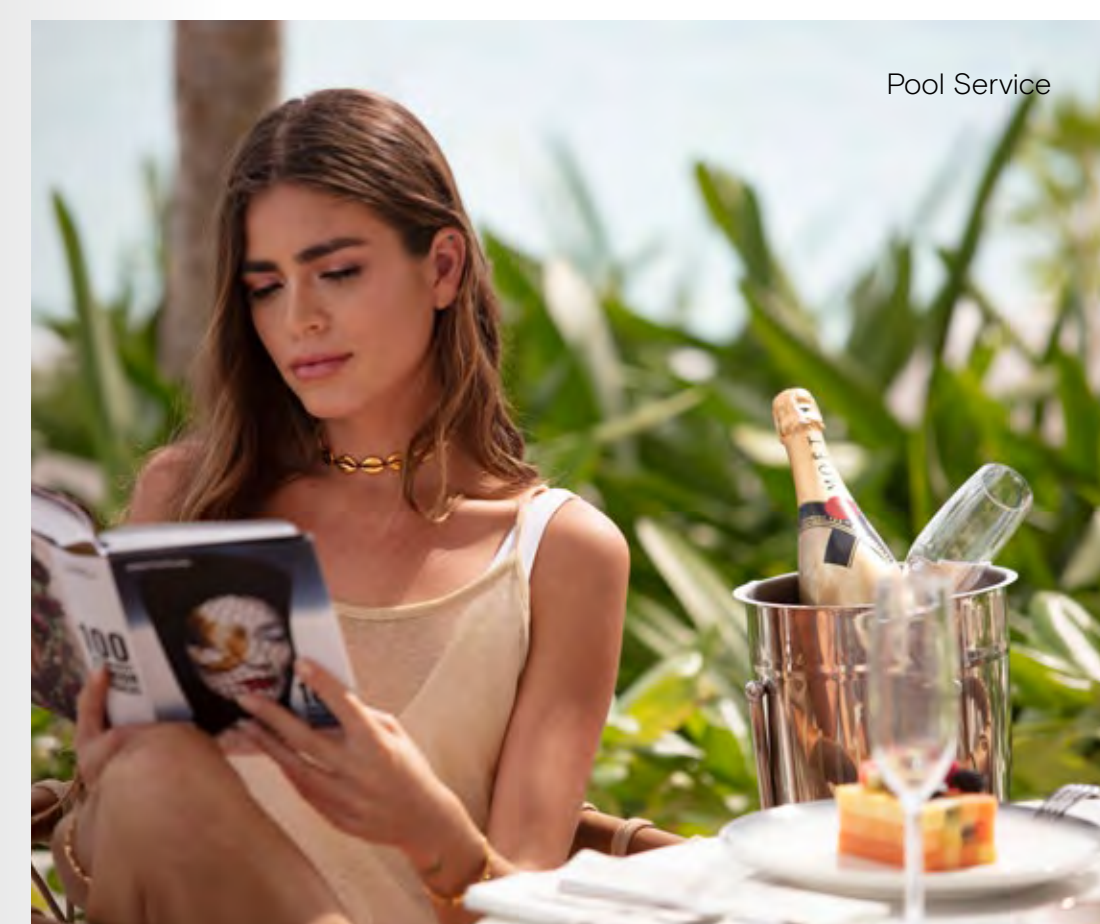
- Sobria torre habitacional de 20 pisos con interiores diseñados por Sofia Aspe Interiors.
- Extensa colección de obras de arte en áreas comunes seleccionadas por un curador experto de The Related Group.
- Área de alberca con cabanas, servicio de toallas y un impactante vista panorámica de la marina.
- Gimnasio equipado para cualquier rutina de entrenamiento. Disfruta con nuestras modernas máquinas de cardio con pantalla individual y opción para escuchar música, con los aparatos para cargar peso, o ejercita sin "conectarte" con peso libre, tapetes para yoga y estiramiento, y pelotas de Pilates.
- Los residentes gozan de acceso exclusivo al Spa Ciel en el edificio vecino SLS Cancun, que ofrece más de 130 metros cuadrados de camas de descanso y masaje. Experimenta el placer de nuestras regaderas y baños de vapor, también disponibles para propietarios e invitados.
- El Club Lounge provee servicio de alimentos y bebidas para aquellos residentes que desean deleitar a amigos y familiares fuera de su residencia. Las amenidades incluyen pantallas planas, sistema de audio vía Bluetooth y una barra.
- Diviértete en nuestras noches de cine en la Sala de Proyecciones.
- Dos cajones de estacionamiento para cada residencia y servicio de valet 24 horas.
- Servicios de hotel y concierge disponibles a través del SLS Cancun Hotel. Si así lo desean, los residentes pueden solicitar servicio a la habitación, limpieza de su residencia, lavandería y mucho más.
- Teen lounge.
- Yoga.
- Snack bar en el Paseo.

## EXCLUSIVE ON-DEMAND CONCIERGE SERVICES

- Memberships to SLS hotels in Miami, New York, Los Angeles and other international destinations.
- Personalized concierge services to take care of your needs, even when you are not at home.
- Wi-Fi in all common areas of the property.
- Valet parking and 24-hour security.
- Business Center with wireless high speed internet and audiovisual equipment the business center will be in the pavilions not at the tower, construction with T5.
- Courier service.
- Currency exchange.
- Room service.
- Full-time maintenance staff.
- Personalized concierge services on request:
  - Housekeeper and cleaning assistance.
  - Food purchase prior to your arrival.
  - Shopping and home delivery.
  - Laundry and dry-cleaning.
  - Babysitting.
  - Plant care.
  - Shoe shine.
  - Pet-sitting.
  - IT staff and services.
  - Chauffeur and transportation.
  - Front door newspaper delivery.

## EXCLUSIVOS SERVICIOS CONCIERGE ON DEMAND

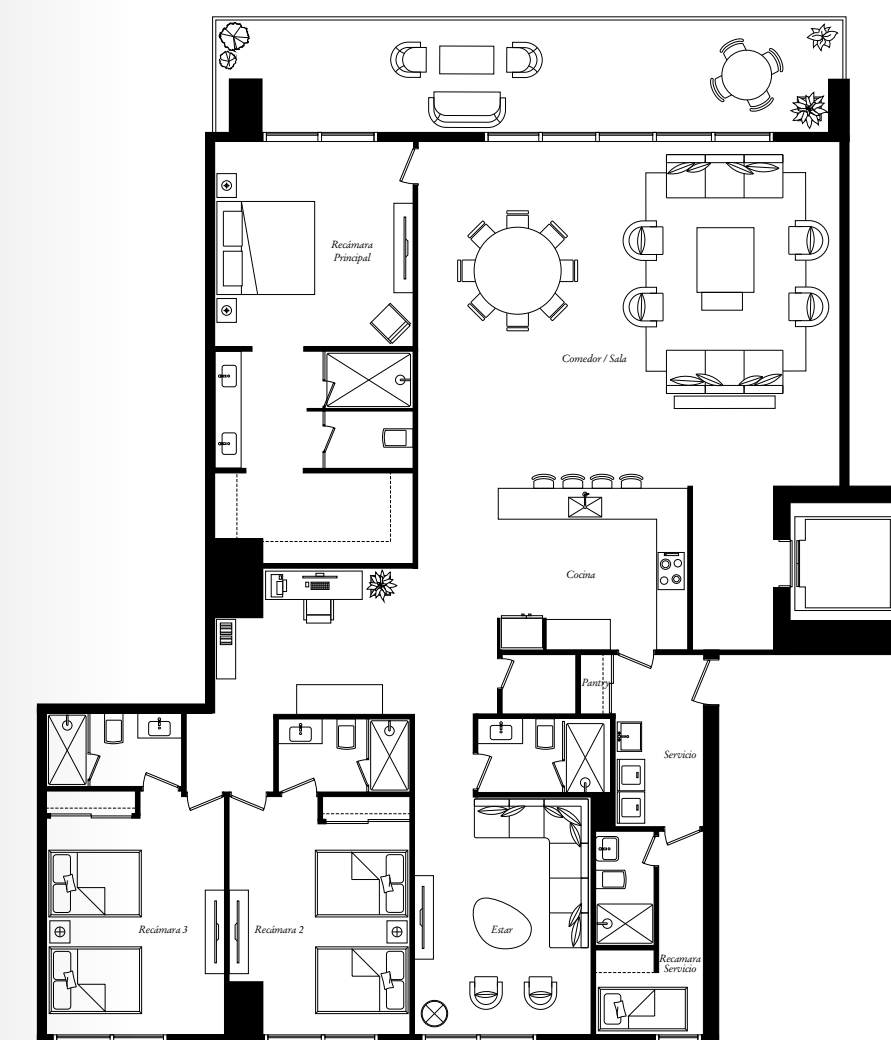
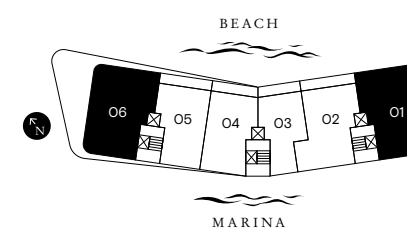
- Membresías en destinos internacionales de SLS Hotels.
- Servicios de concierge personalizados para ocuparse de sus necesidades, aun cuando usted no está en casa.
- Wi-Fi en todas las áreas comunes del complejo.
- Valet parking y seguridad 24 horas.
- Servicio de paquetería y mensajería.
- Cambio de divisas.
- Servicio de habitación.
- Personal de mantenimiento tiempo completo.
- Servicios de concierge personalizados bajo pedido:
  - Asistencia de ama de llaves y limpieza.
  - Compras de víveres antes de su llegada.
  - Compras y servicio a domicilio.
  - Lavandería y tintorería.
  - Niñera.
  - Cuidado de plantas.
  - Limpieza de calzados.
  - Cuidado de mascotas.
  - Asistencia de expertos en sistemas (IT).
  - Transporte con chófer.
  - Entrega de periódico a la puerta de su hogar.



### SLS O1/O6

4 Bedrooms / 5 Baths + Family + Service Room

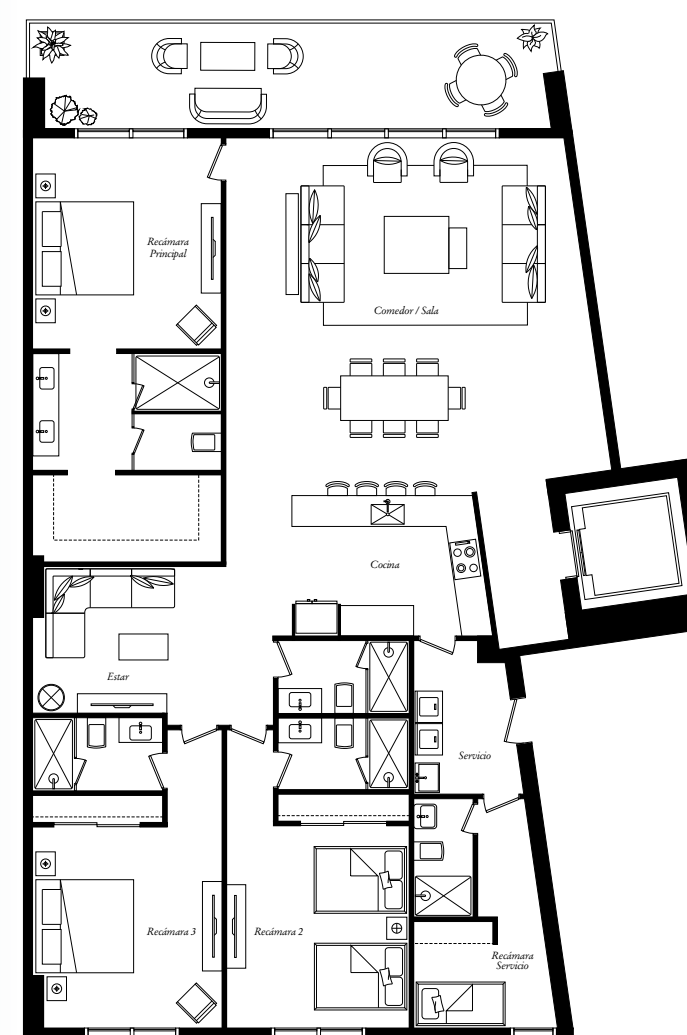
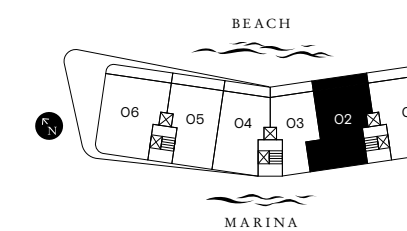
A/C INTERIOR AREA	272 M <sup>2</sup>	2,927 FT <sup>2</sup>
TERRACE AREA	39 M <sup>2</sup>	420 FT <sup>2</sup>
TOTAL RESIDENCE	311 M <sup>2</sup>	3,347 FT <sup>2</sup>



### SLS O2

3 Bedrooms / 4 Baths + Family + Service Room

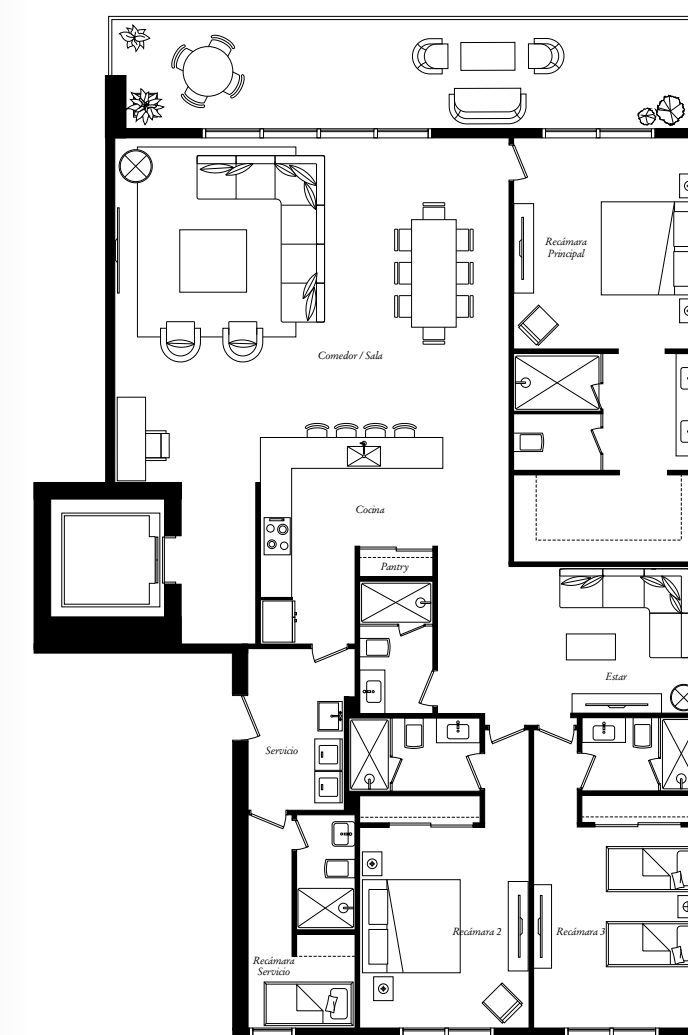
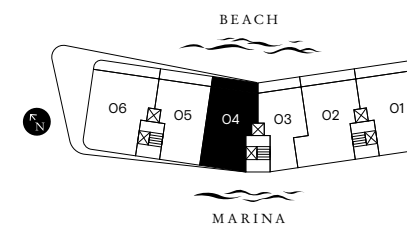
A/C INTERIOR AREA	246 M <sup>2</sup>	2,648 FT <sup>2</sup>
TERRACE AREA	31 M <sup>2</sup>	334 FT <sup>2</sup>
TOTAL RESIDENCE	277 M <sup>2</sup>	2,982 FT <sup>2</sup>



### SLS O4

3 Bedrooms / 4 Baths + Family + Service Room

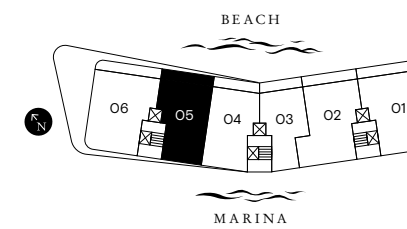
A/C INTERIOR AREA	212 M <sup>2</sup>	2,282 FT <sup>2</sup>
TERRACE AREA	27 M <sup>2</sup>	291 FT <sup>2</sup>
TOTAL RESIDENCE	239 M <sup>2</sup>	2,573 FT <sup>2</sup>



### SLS O5

3 Bedrooms / 4 Baths + Family + Service Room

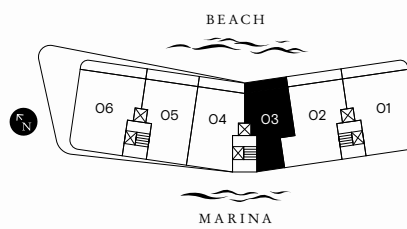
A/C INTERIOR AREA	208 M <sup>2</sup>	2,239 FT <sup>2</sup>
TERRACE AREA	31 M <sup>2</sup>	334 FT <sup>2</sup>
TOTAL RESIDENCE	239 M <sup>2</sup>	2,573 FT <sup>2</sup>



### SLS O3

2 Bedrooms / 2.5 Baths + Family + Service Room

A/C INTERIOR AREA	168 M <sup>2</sup>	1,808 FT <sup>2</sup>
TERRACE AREA	27 M <sup>2</sup>	291 FT <sup>2</sup>
TOTAL RESIDENCE	195 M <sup>2</sup>	1,836 FT <sup>2</sup>





MX +52 99 84 07 9533

[hola@monarcainmobiliaria.com.mx](mailto:hola@monarcainmobiliaria.com.mx)

[BAHIABEACHCANCUN.COM](http://BAHIABEACHCANCUN.COM)



SOFÍA ASPE  
interiorismo



ORAL REPRESENTATIONS CANNOT BE RELIED UPON AS CORRECTLY STATING REPRESENTATIONS OF THE DEVELOPER. FOR CORRECT REPRESENTATIONS, MAKE REFERENCE TO THIS BROCHURE AND THE DOCUMENTS REQUIRED BY SECTION 718.503, FLORIDA STATUTES, TO BE FURNISHED BY A DEVELOPER TO A BUYER OR LESSEE.

This condominium SLS Bahia Beach is being developed by BANCO INVEX, SA INSTITUCION DE BANCA MULTIPLE FIDEICOMISO 2988 ("Developer") which has a limited right to use the trademarked names, brands, and logos used in the marketing and development of SLS Bahia Beach. This offering is made only by the Developer's Prospectus for the Condominium provided to you by the Developer. No statement should be relied upon if not made in the Prospectus provided to you by the Developer of SLS Bahia Beach. The Developer is not incorporated in, located in, nor a resident of, New York. This offering is not directed to any person or entity in New York by, or on behalf of, the Developer or anyone acting with the Developer's knowledge. Your eligibility for purchase will depend upon your state or territory of residency and for buyers who reside in any jurisdiction where this offering is prohibited by law, no purchase or sale shall take place solely as a result of this publication, until registration and filing requirements are met, or exemptions are confirmed. Developer, pursuant to license or marketing agreements with each, has a right to use the trade names, marks, and logos of: The Related Group; Inmobilia; U-Calli; and Puerto Cancun, each of which are licensors and none of which is the Developer of record. All images and designs depicted herein are artist's conceptual renderings, which are based upon preliminary development plans, and are subject to change without notice in the manner provided in the offering documents. Renderings and images should not be relied upon as representations, express or implied, of the final detail of the residences. Certain items, if depicted, such as tile, marble, stone, granite, cabinets, wood, stain, grout, wall and ceiling textures, mica and carpeting, are only available as described in the Developer's Prospectus, and if available, all such finish details are subject to size and color variations, grain and quality variations, and may vary in accordance with price, availability and changes by manufacturer from those shown in the illustrations. Developer may modify the list of standard features or make substitutions for equipment, material, appliances, brands, models, etc., with items which in Developer's opinion are of equal or better quality (regardless of cost). All depictions of furniture, appliances, counters, soffits, floor coverings and other matters of detail, including, without limitation, items of finish and decoration, are conceptual only and are not necessarily included with unit purchase. Furnishings are only included if, and to the extent, provided in your purchase agreement. Consult the Developer's Prospectus and your purchase agreement to learn what is included with purchase and all terms and conditions. Rendering and images are not necessarily to scale and are shown solely for illustrative purposes. Renderings depict proposed views, which are not identical from each residence. Any view from a residence or from other portions of the property may in the future be limited or eliminated by future development or forces of nature and the Developer expressly does not guarantee any view. All improvements, designs and construction are subject to first obtaining the appropriate governmental permits and approvals for the same. The Prospectus is not a securities offering. No statements or representations have been made by Developer, or any of its agents, employees, or representatives with respect to any potential for future profit, future appreciation in value, investment opportunity potential, rental income potential, or other benefits to be derived from ownership of the unit and any statement construed as same should not be relied upon in your decision to purchase a unit. No real estate broker is authorized to make any representations or other statements regarding the projects, and no agreements with, deposits paid to or other arrangements made with any real estate broker are or shall be binding on the Developer. The managing entities, hotel brands, artwork, designers, contributing artists, interior designers, fitness facilities, amenities, services, and restaurants proposed within SLS Bahia Beach depicted or referred to herein are accurate as of this publication date; however, Developer does not guarantee that these will not change prior to, or following, completion of SLS Bahia Beach. Art depicted is not guaranteed; Developer reserves the right to loan or to gift art to the SLS Bahia Beach unit owner association at the Developer's sole discretion and selection. Membership referred to is included with purchase, but goods and services obtainable as a member are not included with purchase and are available at an additional cost. Membership is not exclusive and is subject to terms, conditions, and availability. Some amenities referenced will require additional cost and are not included with purchase. Obtain the Prospectus from the Developer and consult the Prospectus for all terms, conditions, unit dimensions and specifications, and to learn what is included with a unit purchase. ©2018 with all rights reserved. Reproduction for private or commercial use is not authorized.