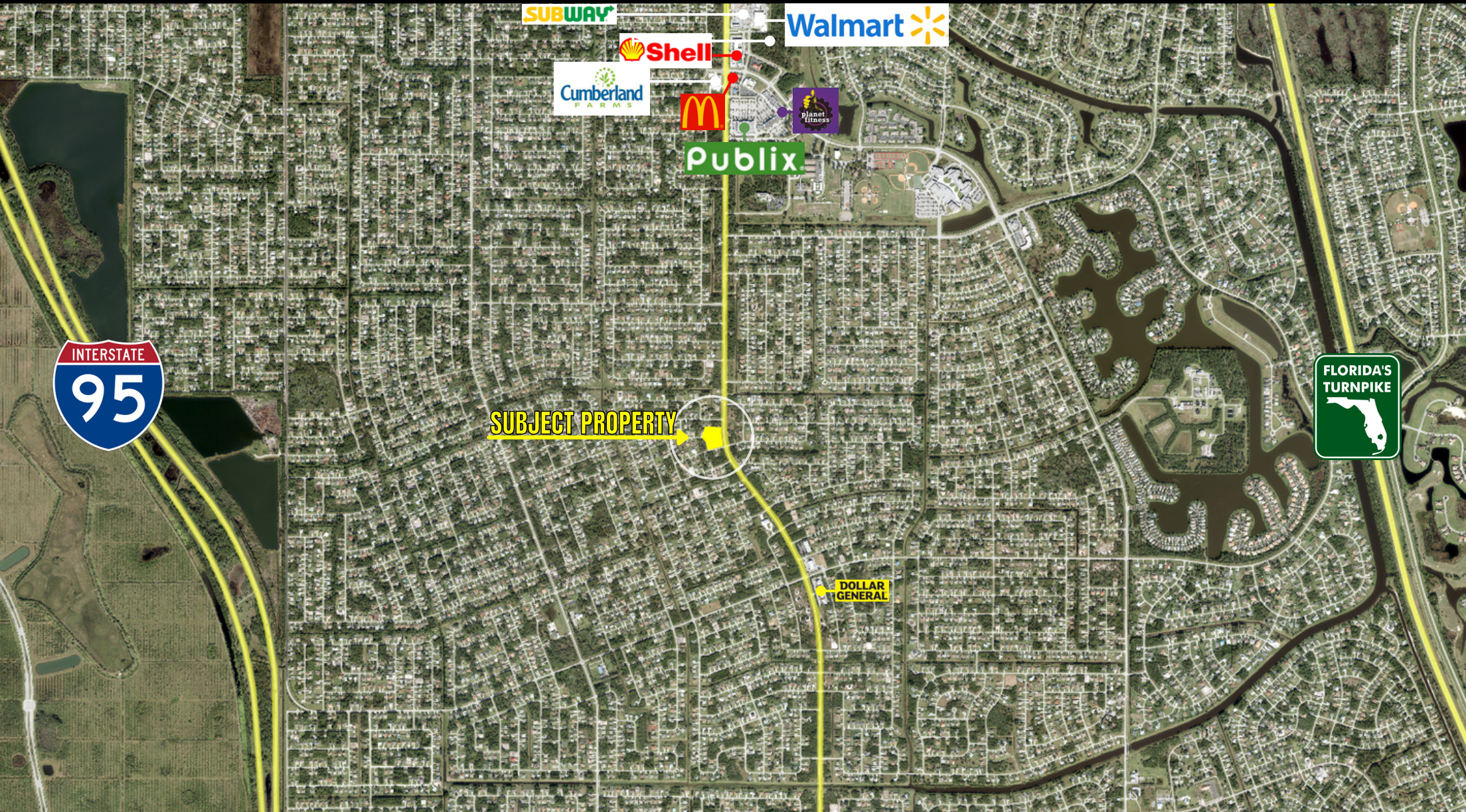




Alex Rodriguez-Torres | Owner/Broker

P: 772-333-2358 E: RTEIncorporated@aol.com

1847 SE Port Saint Lucie Blvd. Port Saint Lucie, FL 34952



Alex Rodriguez-Torres | Owner/Broker

P: 772-333-2358 E: RTEIncorporated@aol.com

1847 SE Port Saint Lucie Blvd. Port Saint Lucie, FL 34952

Prime location, with over 250 feet directly on Port St Lucie Blvd.

This vacant parcel consists of 4 parcels, currently zoned commercial general.

Perfect development opportunity in one of the fastest-growing areas of Port St Lucie.

Proposed Price **\$799K**

Acreage. **1.74 Acres**

Land Size **2,209.513 Perimeter**

Land Type **Vacant Land**

Zoning **Commercial General**



Alex Rodriguez-Torres | Owner/Broker

P: 772-333-2358 E: RTEIncorporated@aol.com

1847 SE Port Saint Lucie Blvd. Port Saint Lucie, FL 34952

Age

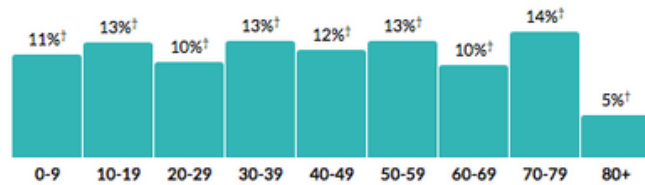
42.3

Median age

about 90 percent of the figure in the Port St. Lucie, FL Metro Area: 48.2

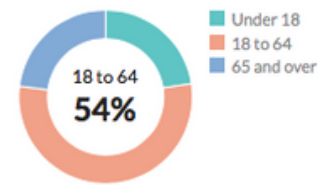
about the same as the figure in Florida: 42.4

Population by age range



Show data / Embed

Population by age category



Show data / Embed

Income

\$28,924

Per capita income

about 80 percent of the amount in the Port St. Lucie, FL Metro Area: \$34,456

about 90 percent of the amount in Florida: \$32,887

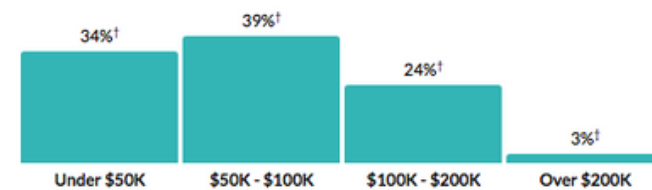
\$68,041

Median household income

about 10 percent higher than the amount in the Port St. Lucie, FL Metro Area: \$62,608

about 20 percent higher than the amount in Florida: \$59,227

Household income



Show data / Embed

Households

68,484

Number of households

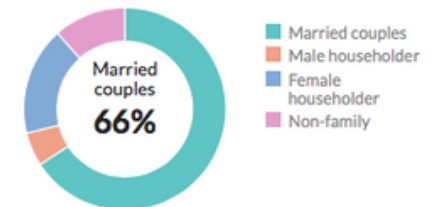
the Port St. Lucie, FL Metro Area: 181,914
Florida: 7,905,832

2.9

Persons per household

about 10 percent higher than the figure in the Port St. Lucie, FL Metro Area: 2.7
about 10 percent higher than the figure in Florida: 2.7

Population by household type



Show data / Embed