

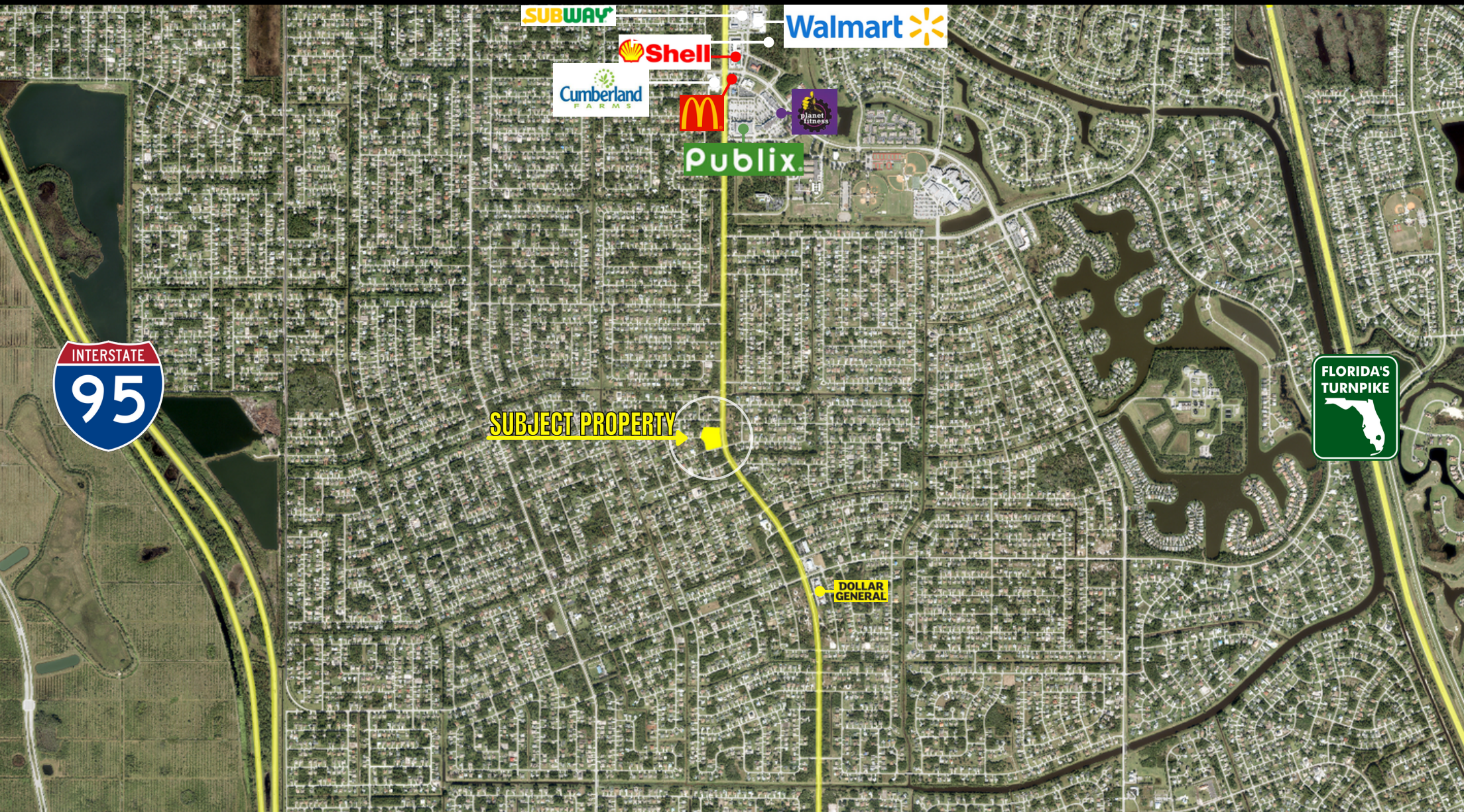


Alex Rodriguez-Torres | Owner/Broker

P: 772-333-2358 E: RTEIncorporated@aol.com

1847 SE Port Saint Lucie Blvd. Port Saint Lucie, FL 34952





Alex Rodriguez-Torres | Owner/Broker

P: 772-333-2358 E: RTEIncorporated@aol.com

1847 SE Port Saint Lucie Blvd. Port Saint Lucie, FL 34952



Prime location, with over 250 feet directly on Port St Lucie Blvd.

This vacant parcel consists of 4 parcels, currently zoned commercial general.

Perfect development opportunity in one of the fastest-growing areas of Port St Lucie.

<u>Proposed Price</u>	<u>\$799K</u>
-----------------------	---------------

<u>Acreage.</u>	<u>1.74 Acres</u>
-----------------	-------------------

<u>Land Size</u>	<u>2,209.513 Perimeter</u>
------------------	----------------------------

<u>Land Type</u>	<u>Vacant Land</u>
------------------	--------------------

<u>Zoning</u>	<u>Commercial General</u>
---------------	---------------------------



### Age

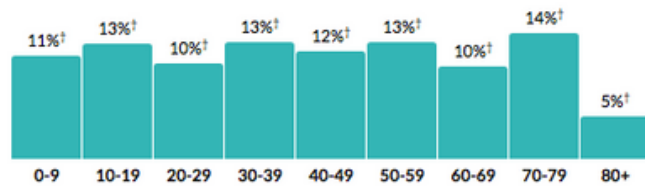
**42.3**

#### Median age

about 90 percent of the figure in the Port St. Lucie, FL Metro Area: 48.2

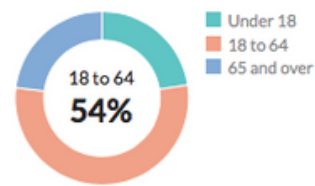
about the same as the figure in Florida: 42.4

Population by age range



[Show data](#) / [Embed](#)

Population by age category



[Show data](#) / [Embed](#)

### Income

**\$28,924**

#### Per capita income

about 80 percent of the amount in the Port St. Lucie, FL Metro Area: \$34,456

about 90 percent of the amount in Florida: \$32,887

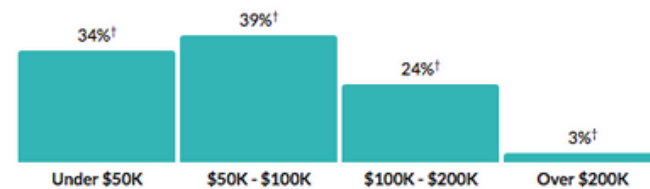
**\$68,041**

#### Median household income

about 10 percent higher than the amount in the Port St. Lucie, FL Metro Area: \$62,608

about 20 percent higher than the amount in Florida: \$59,227

Household income



[Show data](#) / [Embed](#)

### Households

**68,484**

#### Number of households

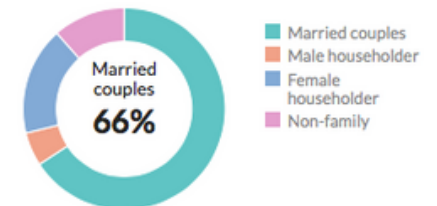
the Port St. Lucie, FL Metro Area: 181,914  
Florida: 7,905,832

**2.9**

#### Persons per household

about 10 percent higher than the figure in the Port St. Lucie, FL Metro Area: 2.7  
about 10 percent higher than the figure in Florida: 2.7

Population by household type



[Show data](#) / [Embed](#)