



# LUTHERAN CAMPUS MINISTRY

## AT THE UNIVERSITY OF DELAWARE

247 HAINES STREET • NEWARK, DE 19711 • 302-368-3078

### SPRING NEWSLETTER 2017



*A message from Chaplain Mindy:* The second half of spring term always soars by at a wonderful, vibrant, overwhelming pace! What a joy to invest in the lives of the amazing students who take part in Lutheran Campus Ministry at UD.

Our student Exec Board has been an outstanding group this year. It is hard to think about bidding farewell to Alex Huey, our outgoing president, who has crafted excellent agendas, led us with focus and warmth, and helped to generate a spirit of welcome, joy, and humor at our LCM events. However, we are excited for him and for his fall marketing internship with the Disney Vacation Club in Celebration, Florida. Thankfully, the remainder of our current board members will continue their faithful, creative service into the 2017-2018 academic year, with Sarah Fredrick, our new President-Elect, at the helm. Many thanks as well to John Barber, Larissa Kubitz, and Leah Fitchett for their excellent work!

I have felt richly blessed by one-on-one conversations with students in recent weeks, whether with active LCM members or with student inquirers. I continue to be impressed and humbled by the students' integrity, their sincere curiosity and even hunger for the life of faith, their deep investment in vocational discernment, and their determination to live out their faith in intentional service to others. What a privilege it is to come alongside them, listening deeply, providing gentle guidance, asking invitational questions, and seeking to embody the grace and acceptance of our Lord Jesus Christ. When I grow disheartened by national and world events, I focus on my students, and I rediscover great hope for our future.



It is with sad hearts that we share news of the recent death of our dear friend and brother in Christ, Robert (Bob) Boord. Bob was a generous and kind supporter of Lutheran Campus Ministry and a man of deep faith in Christ. He would often drop by the LCM office just to say hi and to share his cheery smile. He even brought by a box of Valentine's Day chocolates for JoAnne and me only days before he died. You are very much missed, Bob! Thank you, God, for the chance to know this intelligent, thoughtful, and devout man; please continue to send your peace and comfort to his widow, Mary, their family, and all who miss and love him.

We conclude each LCM year with a joyous mid-day picnic on Reading Day, sharing food and fellowship, as well as gathering around the LCM sign for a group photo. The highlight of the event is honoring our graduating seniors, of whom there are seven this year! For each senior, we offered prayer and laying on of hands, as well as small gifts in remembrance of LCM.



A mighty **thank you** to all of you who support and contribute to Lutheran Campus Ministry, whether with your time, talent, or treasure. Because of your contributions, we can continue providing welcoming, empowering, and Christ-centered contexts for these inspiring students to grow in faith, outreach, leadership, discipleship, and service. Thanks be to God!

In Christ, Mindy †



**Lutheran Campus Ministry's fall fundraiser is Saturday, November 4th, at St. Philip's Lutheran Church. Please mark your calendars. We hope to see you there!**

## LCM's recent events...

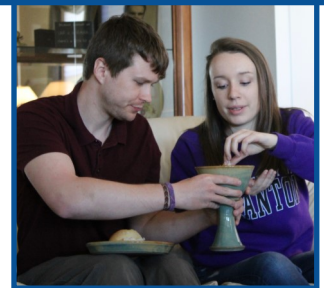


LCM students participated in the ecumenical Oxfam Hunger Banquet on March 8th. Our goal was to raise awareness about world-wide food insecurity.

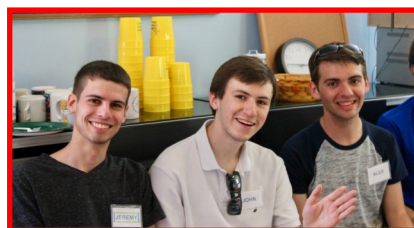


We enjoyed sharing Tuesday dinner and fellowship with Bishop Bill Gohl on April 25th!

**SPRING RETREAT:** LCM returned to Hack's Point, Maryland, on the Bohemia River in April for the spring retreat. Despite the dreary weather on Saturday, students enjoyed their time together in Bible study, relationship building games, and an outing for ice cream! Sunday morning the sun was shining brightly as the students witnessed the baptism of one of our students, Morgan Spurrier. Please welcome Morgan into the fellowship of Christ and keep her in your prayers as she continues her faith journey. Thank you to The Reverend Winona Holy, Presbyterian Campus Pastor, for her leadership and support that day.



**SPRING CELEBRATION:** Forty-two of us gathered for the second annual LCM Spring Celebration on Saturday, April 29th. It was a joy to see our students, their parents, committee members, alumni, and friends of the ministry all together in the chapel for a lovely spring afternoon, enjoying food and fellowship! Sandy Betley, a member of our Directing Committee, offered a thoughtful reflection about how our graduating seniors' faith is to be nurtured little by little, with loving care, over the years, just as they are invited to take care of the plants with which they were presented that afternoon. This year we have seven LCM graduates to celebrate: Scott Eisenhart (master's degree), Edwin Francois, Spencer Hoernes, Alex Huey, Maddy Lewis, Steven Sell, and Morgan Spurrier. Please pray for God's blessings upon these gifted individuals as they enter a new chapter of their lives! During the event, we also thanked Sandy and Marli Hurff for their years of service on our Directing Committee; they will conclude their involvement later this spring. Sandy and Marli, thank you both for all that you have done for LCM; for your deep investment of time, creativity, and care; and for your loving, generous hearts! ❤️



## *With heartfelt thanks to...*



**ALEX HUEY** for serving as Student Exec Board President for the past year.



**SARAH FREDRICK** for serving as Student Exec Board VP—now President—Elect for 2017-2018. Sarah will also continue as LCM's Social Media Peer Minister.



**JOHN BARBER** for serving as Student Exec Board Treasurer for the past two years — now Vice-President for 2017-2018.



**LARISSA KUBITZ** for serving as Student Exec Board Secretary and continuing into 2017-2018.



**LEAH FITCHETT** for serving as Student Events Coordinator and continuing into 2017-2018.



**CHRIS FRANCIS** for his willingness to serve as the new Student Exec Board Treasurer.



**MARIA FAIOLA** for serving as the F.I.S.H. Peer Minister last year and continuing into 2017-2018.



**JEREMY GROSS** for continuing to preserve LCM's memories through his photography.



**STEVEN SELL** for providing IT technical support.



**HANNAH ROBERTS** for serving as Hospitality Coordinator and continuing into 2017-2018.

***God bless all of our students for their continued service, dedication, and participation in LCM!***

***Our Mission Statement:  
To express our faith in God through  
fellowship, outreach, and service.***

## **PROPERTY WORK DAYS**

Thank you to everyone who volunteered their time by providing a few hours of work to improve and maintain the appearance of LCM's property. We organized four work days throughout the year to keep the grounds, chapel, and the Bonhoeffer House in tip-top shape. We have been blessed to have accomplished the following:

- ◆ Maintained the grounds by pruning bushes, weeding, planting flowers and making sure the yard was trash-free.
- ◆ The chapel had a thorough cleaning, including the windows and carpet!
- ◆ Chapel chairs were repaired.
- ◆ Installed new property signs for parking, no-smoking, and a new free Tuesday dinner sign, inviting students to LCM.
- ◆ Installed new exterior dusk-to-dawn LED lighting on the chapel to improve the security of the property and safety for our students. Thank you to Louis and Louise James for taking on this task.

Our next property work day is scheduled for August 12th to prepare the chapel for our returning students. We hope to see you there!



## **TUESDAY DINNER HOSTS**

Thank you to everyone who has provided a delicious dinner for our students this past year. One of the students' favorite aspects of LCM is partaking in the Tuesday dinner followed by fellowship, devotion, and discussion. Students love to meet members from supporting congregations and enjoy their home-cooked meals. Thank you to all of our dinner hosts this past year. We pray that you had a joyful experience, and we hope to see you again in the fall. Youth groups, families, or a group are welcome to provide a dinner and enjoy meeting our students. Signups for the fall semester will be available on our website beginning August 1st.





## Where do you see God?

Submitted by JoAnne Gross, Administrative Assistant

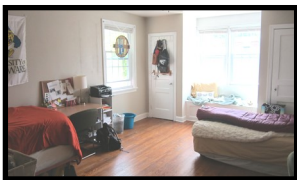
As a parishioner at Grace Lutheran Church in Hockessin, Pastor Tara Magoon frequently asks the congregation “Where do you see God?” Most of us would find this question easy to answer when things are going well for us: a beautiful day; a healthy birth; successful employment; a roof over our head; food on the table and the list could go on and on. I challenge you to ask yourself the same question when faced with challenges, adversity, conflicts in your life, or a tragedy in your community or the world. You may be surprised at your answer to the question “Where do you see God?”

When I was asked to contribute to this newsletter and address my perspective on LCM, I initially found the task to be daunting. This was going to be an out-of-the-box moment in my life. I asked myself “Where do I see God in this assignment?” God has purposefully and timely connected me with LCM and given me the opportunity to share my God-given gifts with the ministry. I have to be reminded that our prayers are answered in *His* time and in a way that is in our best interest. *I could see God!*

While attending a funeral last fall, Pastor Tara asked the mourners “Where do you see God?” Our church family and community had just tragically lost a member. Pastor Tara explained that through the organ donor program someone else was given the gift of seeing the world through the eyes of the very person we were mourning. *I could see God. More importantly, perhaps the recipient will see God, too!* Earlier this year, a devoted ministry supporter and frequent visitor, Bob Boord, was called home. Losing someone suddenly is harder for me to process, so I started *looking for God* to help me. At the funeral, *I found God!* Not because I was sitting in church, but witnessing that a third of the mourners were young men from Bob’s beloved fraternity. What a testament to Bob’s legacy! When faced with sadness, adversity or challenges, I now ask myself “Where do I see God?” By looking for the good in the sadness that frequently surrounds us, it has helped me process and accept whatever comes my way. *I always look for God.*

In my time here at LCM, *I have seen how God* continues to bless Lutheran Campus Ministry in so many ways. I have been blessed to witness: a wonderful group of spirit-filled students who are at different phases in their faith journey; students sharing in their devotion, community service and outreach; a compassionate and caring chaplain to guide the students through their daily lives; a directing committee that selflessly shares their time and talents with the ministry; and a community who generously supports our mission through many resources. I am honored to share in the joys of our seniors embarking on new and exciting experiences. I am joyful for the continued service and dedication of the underclassmen, and I pray that our ministry will be blessed with new students in the fall. Are you asking yourself “Where do you see God?” *God is here, at LCM—alleluia!*

## STUDENT ROOM FOR RENT IN THE BONHOEFFER HOUSE



We currently have one double room remaining for the fall semester.

The house includes 1 1/2 bathrooms, living room, kitchen, laundry facilities on the property, and central air conditioning. Rent includes all utilities (electric, gas, and water) and a parking space for one vehicle. All rooms are furnished. Flexible leases are available. Contact LCM office if you are interested in seeing the house.



*Grace and peace to you and your family for a relaxing summer and safe travels. Please keep LCM in your prayers that we may be blessed with new and returning students in the fall. All are welcome at Lutheran Campus Ministry for a free dinner on Tuesdays!*



WEBSITE: [HTTP://SITES.UDEL.EDU/LUTHERAN-CAMPUS-MINISTRY](http://sites.udel.edu/lutheran-campus-ministry)  
CONTACT: JOANNE GROSS, ADMINISTRATIVE ASSISTANT • EMAIL: [OFFICE@LUTHERANSATUD.ORG](mailto:OFFICE@LUTHERANSATUD.ORG)