

FOR DETAILS OF UPSTANDS REFER TO DRAWING No. 4643/R/16

FOR TOP STEEL REFER TO DRAWING No. 4643/R/71

FOR CONTINUATION REFER TO DRAWING No 4643/R/55

FOR CONTINUATION REFER TO DRAWING No 4643/R/57

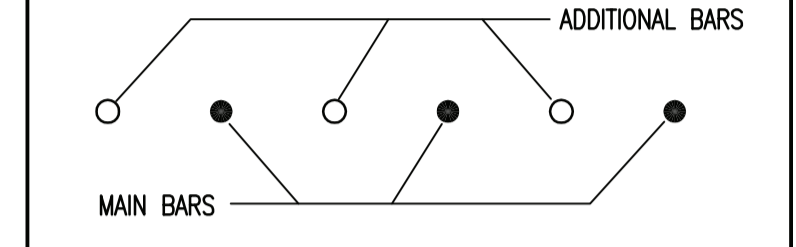
FOR CONTINUATION REFER TO DRAWING No 4643/R/60

THREADED BARS TO SUIT CONNECTION WITH EXISTING LENTON COUPLERS AT EXISTING SLAB EDGE

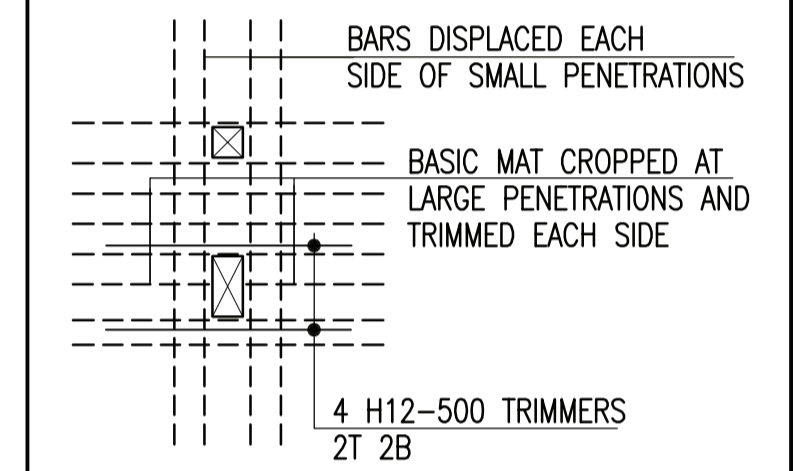
NOTE: L-BARS IN B1/B2 LAYER MAY NEED TO BE LEANT OVER TO ATTAIN CORRECT COVER. THIS MAY OCCUR WHERE THERE IS ADDITIONAL REINF'T.

- NOTES:**
- THIS DRAWING IS TO BE READ IN CONJUNCTION WITH ALL RELEVANT ENGINEERS, ARCHITECTS AND SPECIALIST DRAWINGS AND THE SPECIFICATION.
 - COVER TO REINFORCEMENT TO BE AS FOLLOWS:
35mm - BOTTOM
35mm - TOP STEEL (U.N.O)
 - REINFORCEMENT IS LISTED ON BENDING SCHEDULE Nos. 4643/R/56/01-02.
 - MINIMUM REINFORCEMENT LAPS ARE TO BE AS FOLLOWS:
H8 = 350mm H10 = 400mm H12 = 500mm
H16 = 650mm H20 = 800mm H25 = 1000mm
H32 = 1300mm H40 = 1600mm

ADDITIONAL REINFORCEMENT
REINFORCEMENT MARKED THUS * IS ADDITIONAL TO MAIN MAT AND IS TO BE PLACED ALTERNATELY WITH MAIN BARS AS SHOWN RESULTING IN REINFORCEMENT AT 100mm CENTRES LOCALLY U.N.O.



ADDITIONAL REINFORCEMENT THAT IS INDICATED THUS Δ IS TO BE PLACED AT 150mm c/c AND TO HAVE EVERY 4TH BAR BUNDLED WITH THE BASIC MAT AND INTERMEDIATE BARS SPACED EVENLY TO PROVIDE SEPARATION.



ADDITIONAL REINFORCEMENT IS TO BE DISPLACED AND BUNDLED EITHER SIDE OF SERVICE PENETRATIONS.

TRIMMING DETAIL AT SERVICE PENETRATIONS (IF APPLICABLE)

0	24.01.14	ISSUED FOR CONSTRUCTION.	AW	KJ
Rev.	Date	Revision	By	Chk

CONSTRUCTION

Drawing Title
**PHASE 3 - BLOCK F1
RC DETAILS OF BASEMENT SLAB
BOTTOM STEEL. SHEET 3 OF 11**