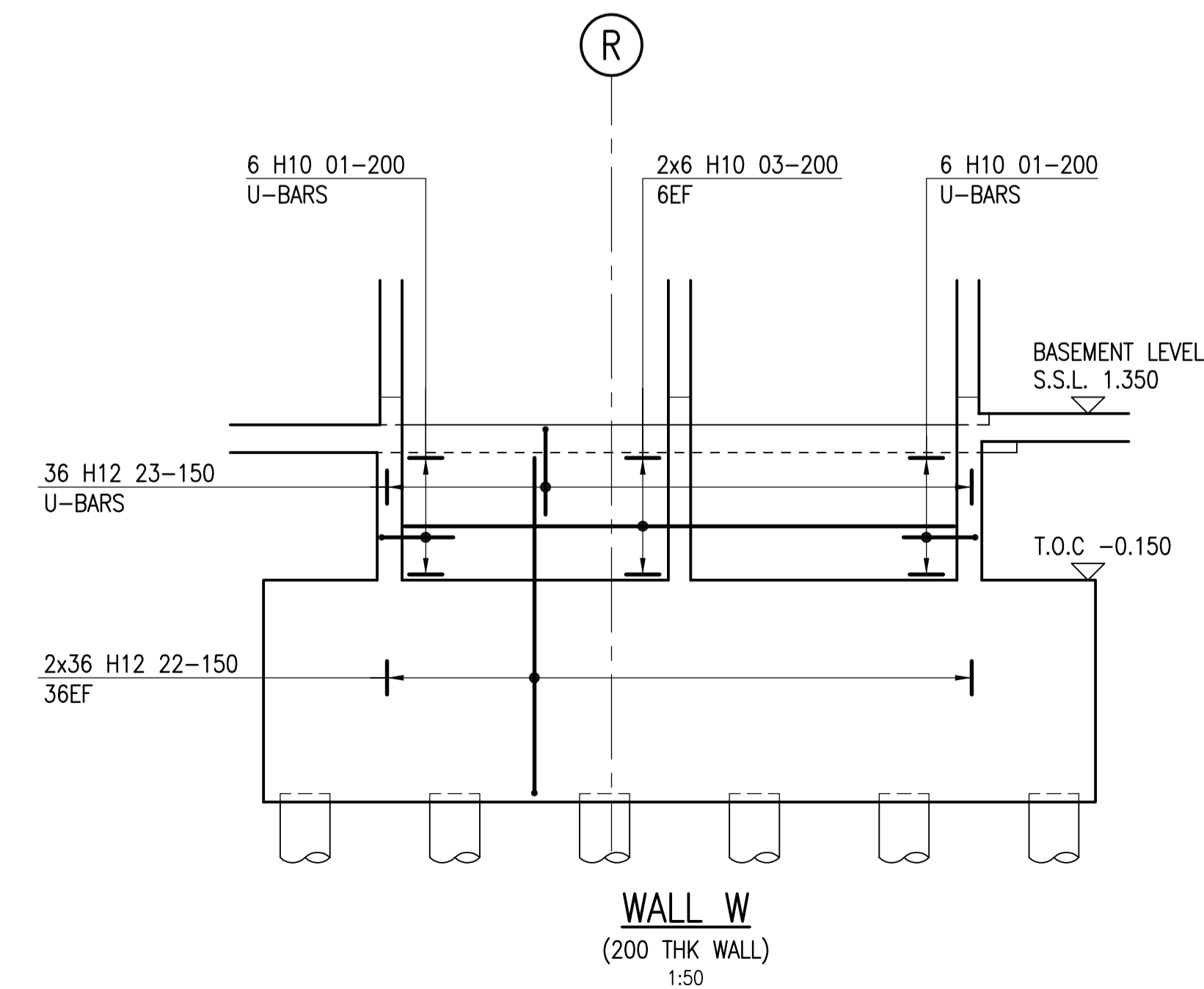
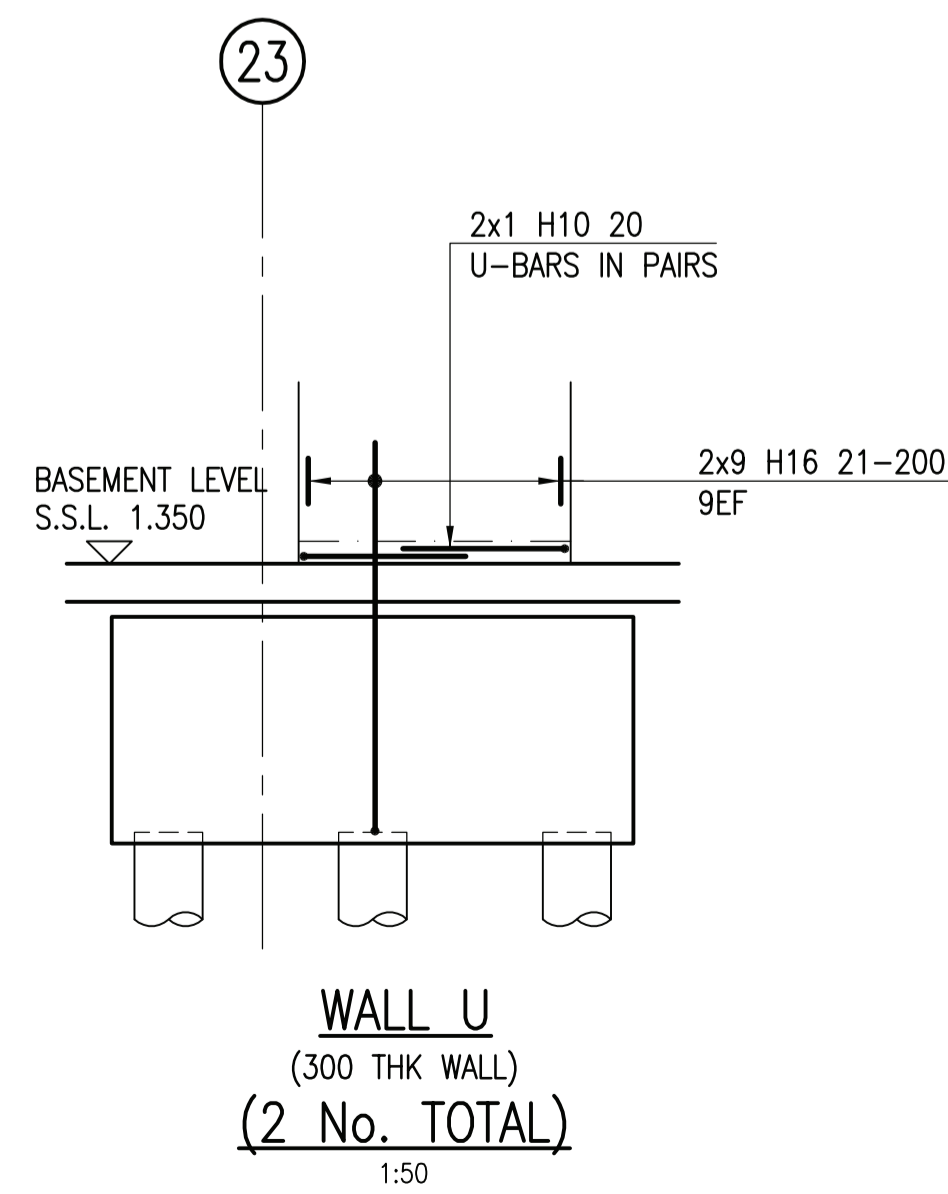
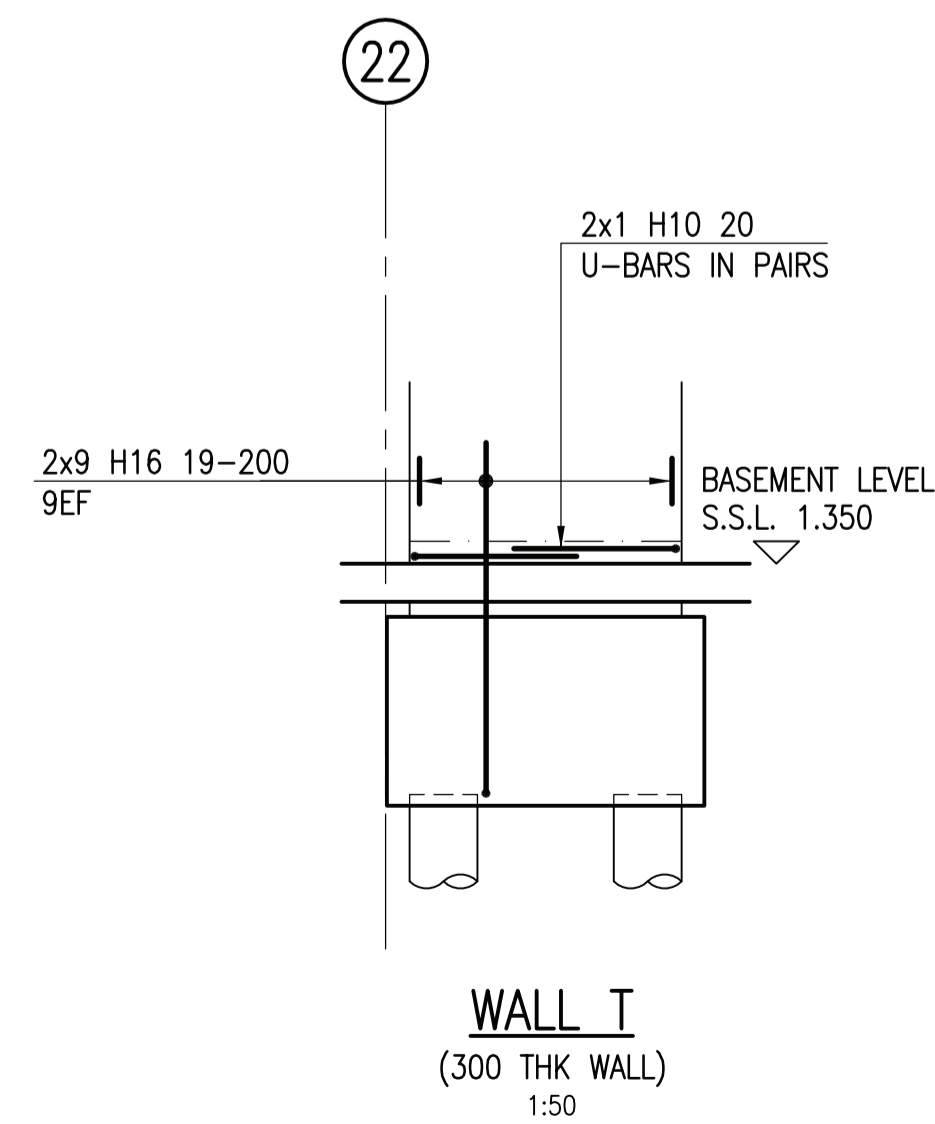
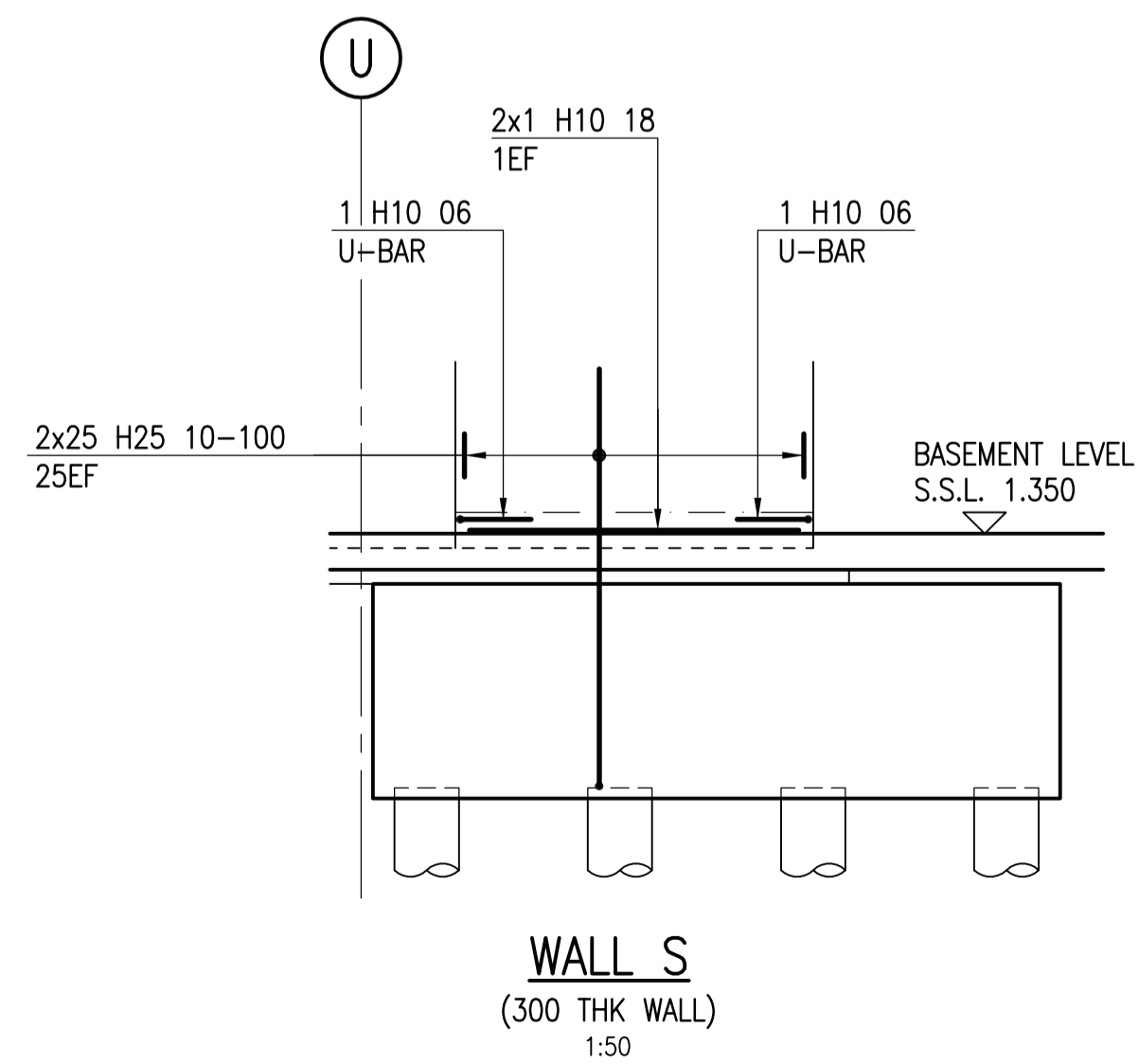
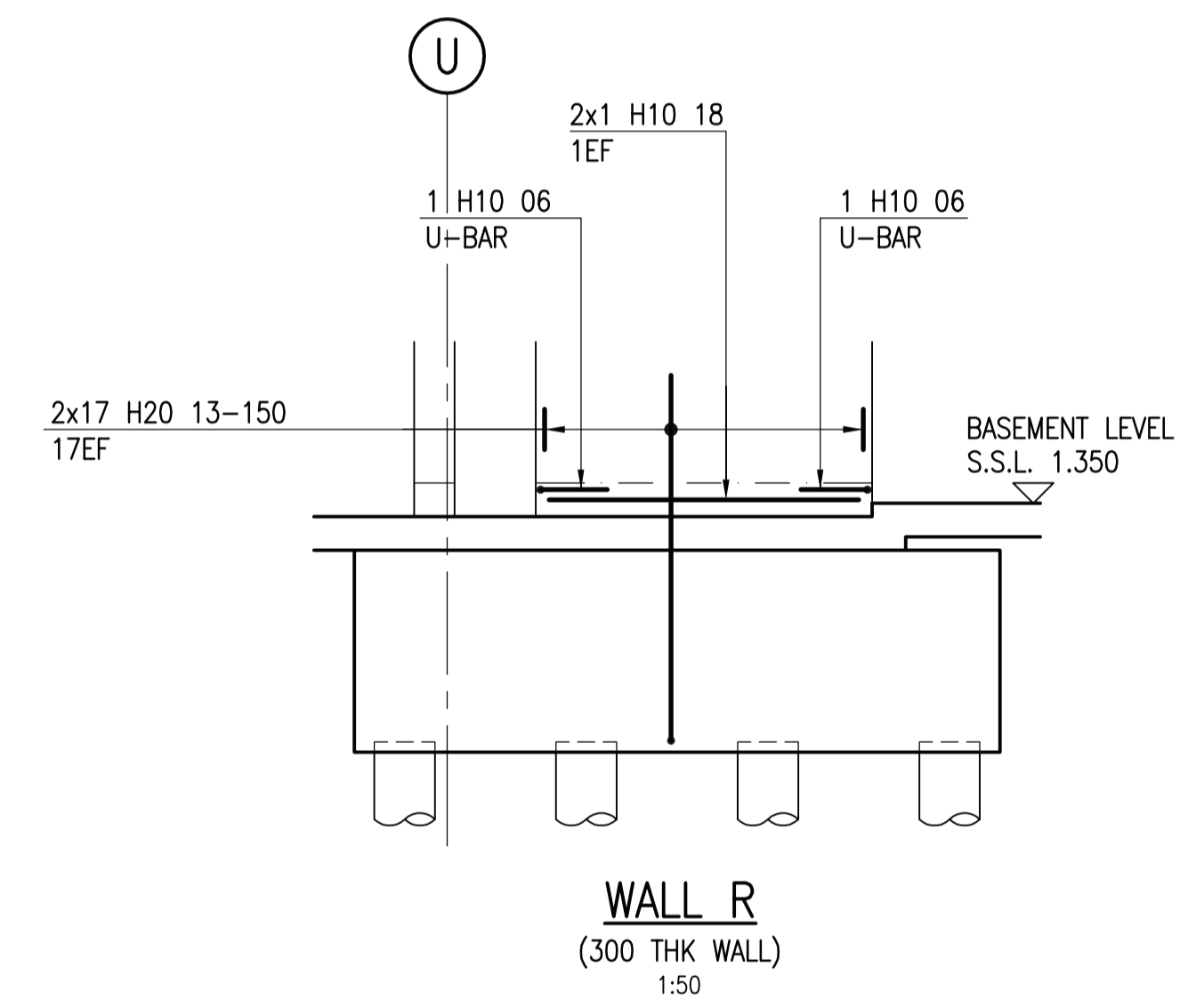
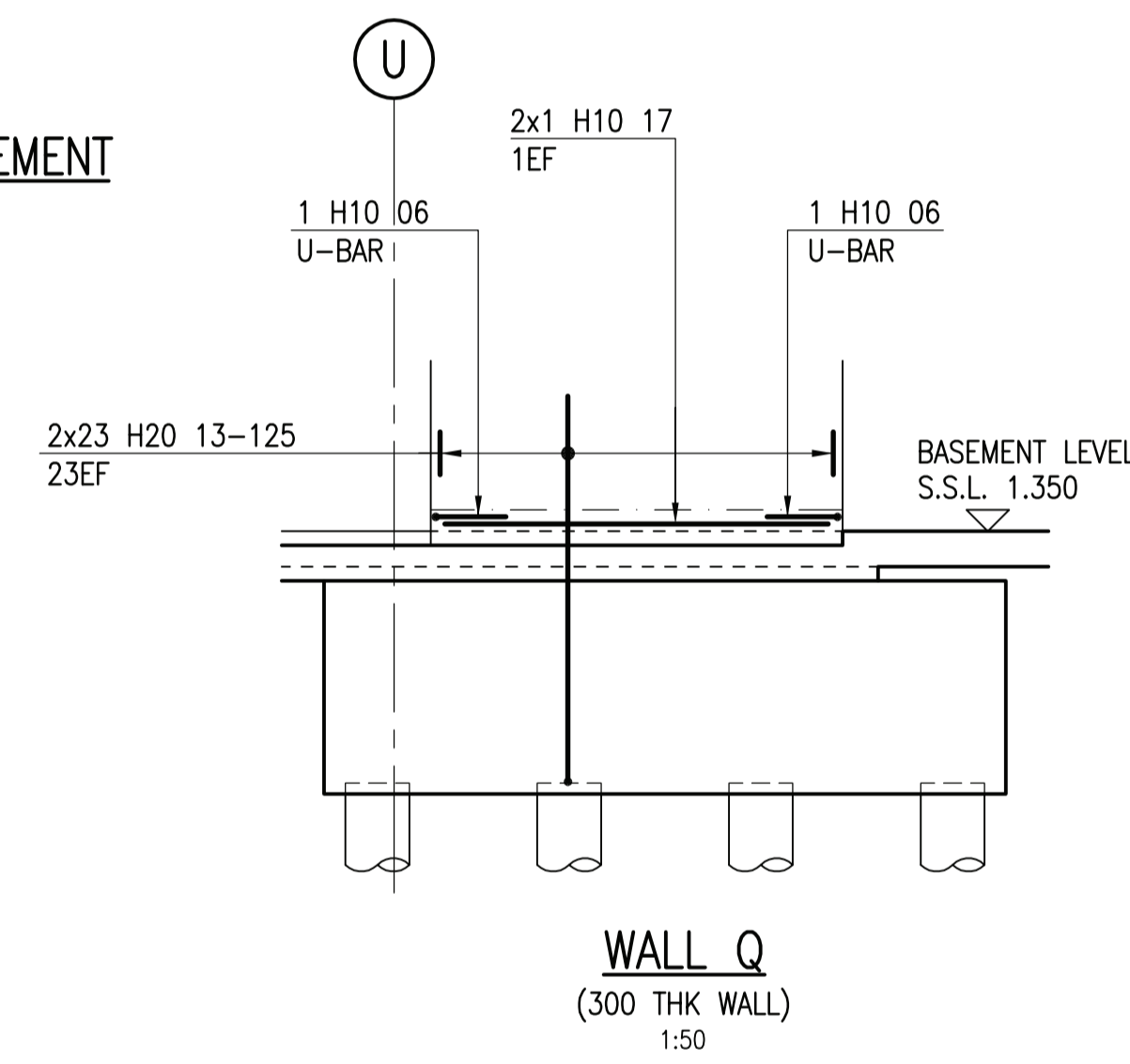
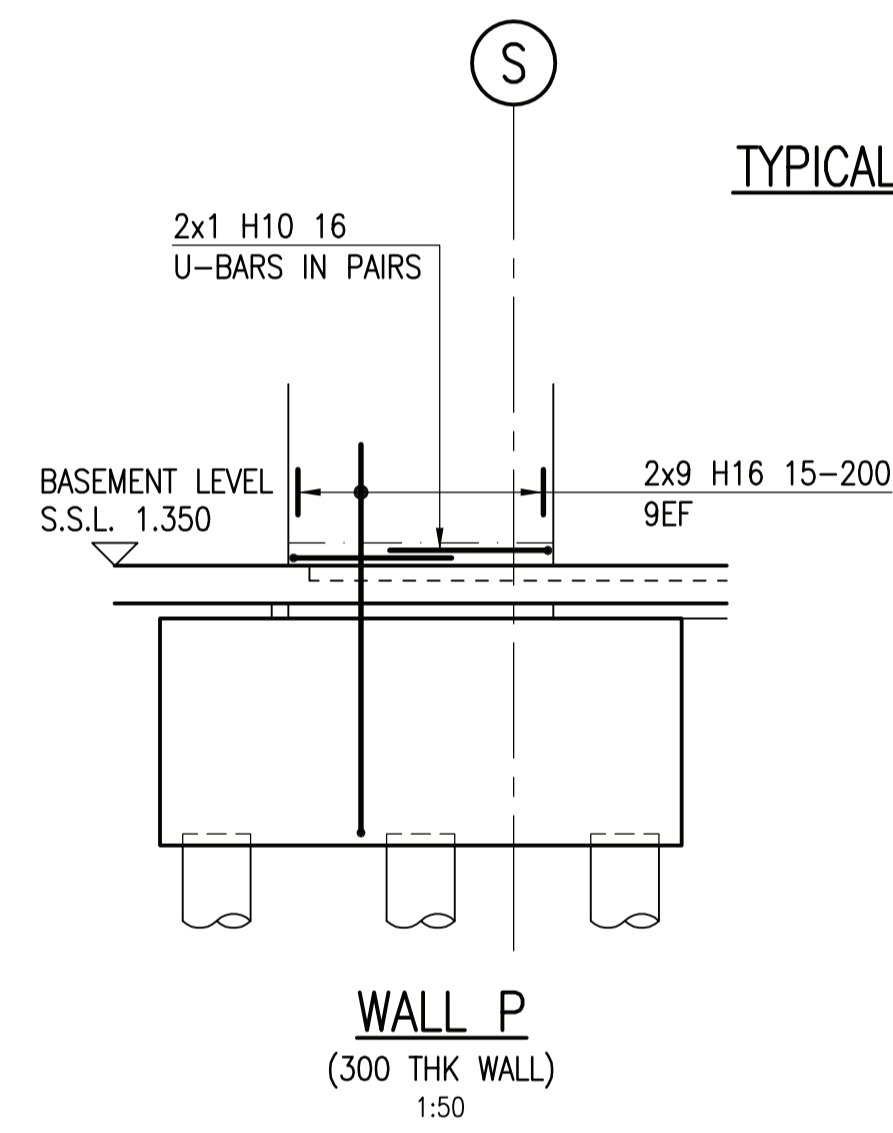
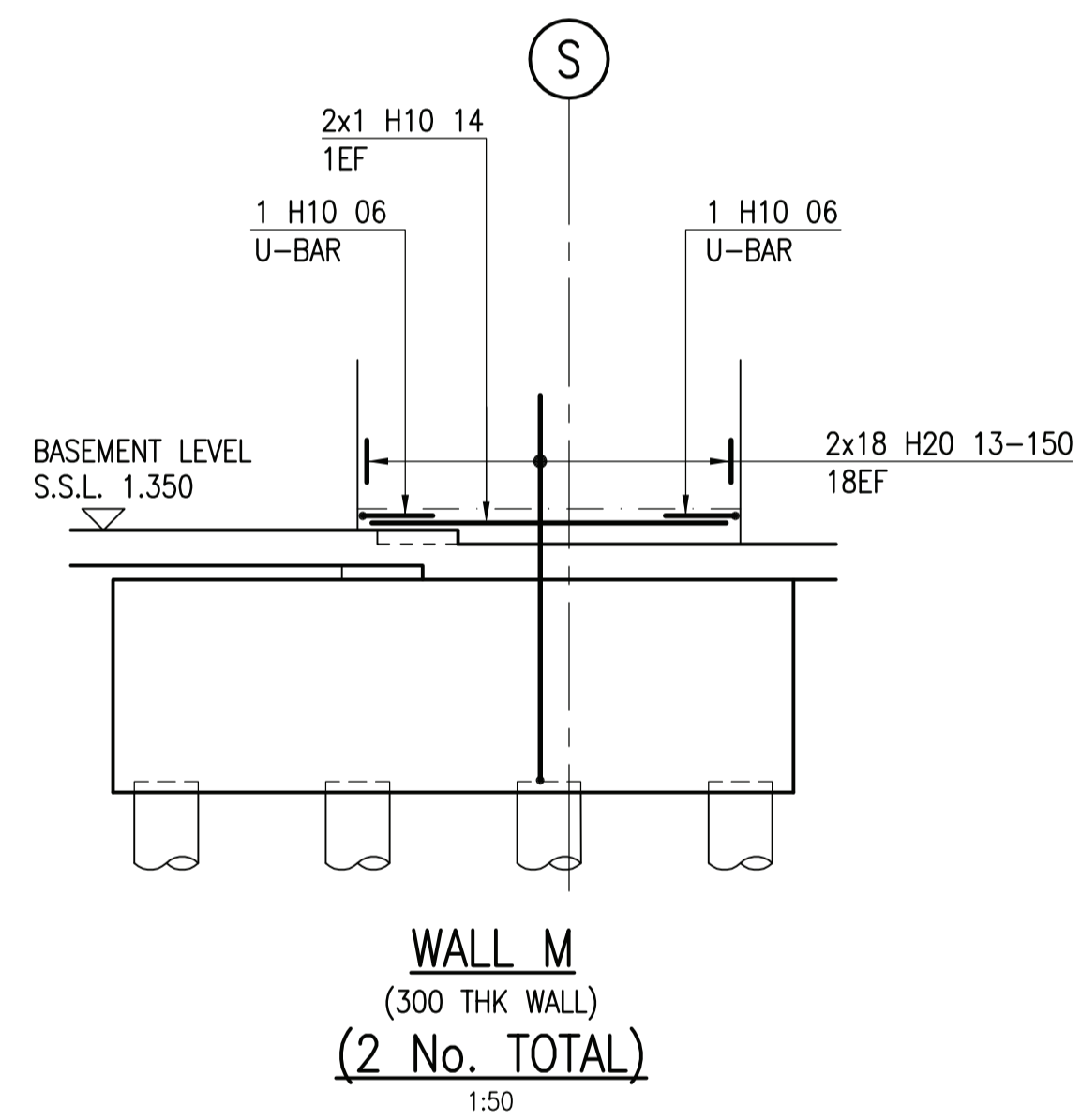


FOR ALL WALLS  
KICKER LEVEL TO BE +1.500

FOR KEY PLAN REFER  
TO DRAWING No 4643/R/505



NOTES:

- THIS DRAWING IS TO BE READ IN CONJUNCTION WITH ALL RELEVANT ENGINEERS, ARCHITECTS AND SPECIALIST DRAWINGS AND THE SPECIFICATION.
- COVER TO REINFORCEMENT TO BE 30mm (U.N.O) FABRICATION TO BE SUBJECTED TO QUALITY ASSURANCE SYSTEM ALLOWING  $\Delta c_{dev} = 5mm$  (EC2)
- REINFORCEMENT IS LISTED ON BENDING SCHEDULE Nos. 4643/R/506/01-02.
- MINIMUM REINFORCEMENT LAPS ARE TO BE AS FOLLOWS:  
H8 = 350mm H10 = 400mm H12 = 500mm  
H16 = 650mm H20 = 800mm H25 = 1000mm  
H32 = 1300mm H40 = 1600mm
- ASSUMED KICKER - 150mm.

0	24.01.14	ISSUED FOR CONSTRUCTION.	AW	KJ
Rev.	Date	Revision	By	Chk

**CONSTRUCTION**

Drawing Title  
**PHASE 3 - BLOCK F1  
RC DETAILS OF  
WALL STARTERS. SHEET 2**