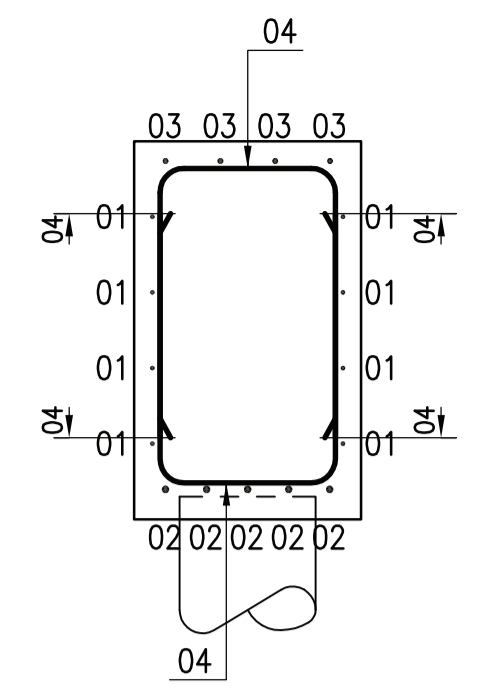
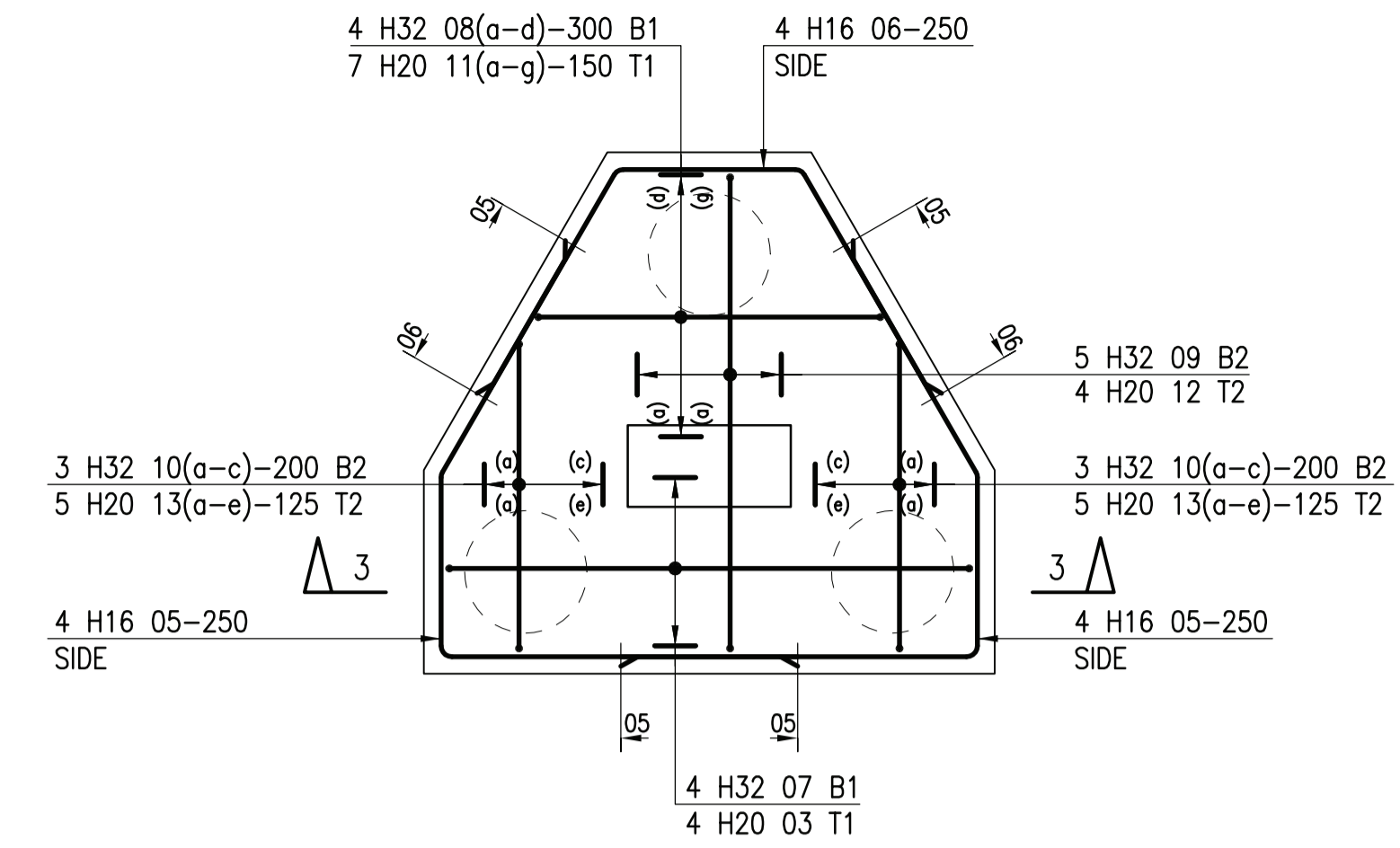


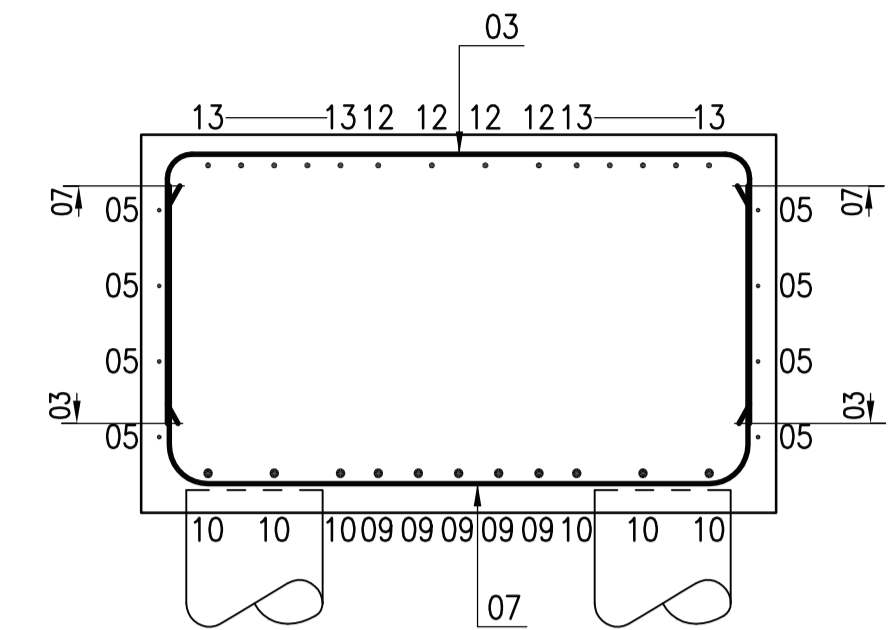
PILECAP TYPE 'PC2'
(1250mm DEEP)
(16 No. TOTAL)



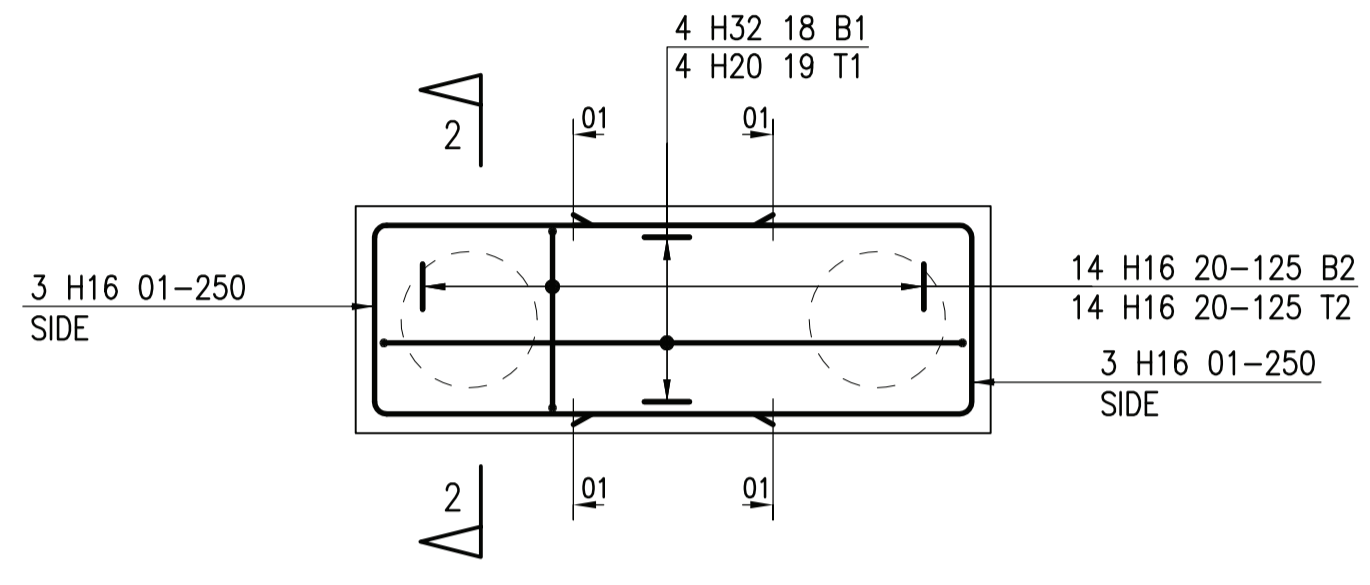
SECTION 1-1
1:25



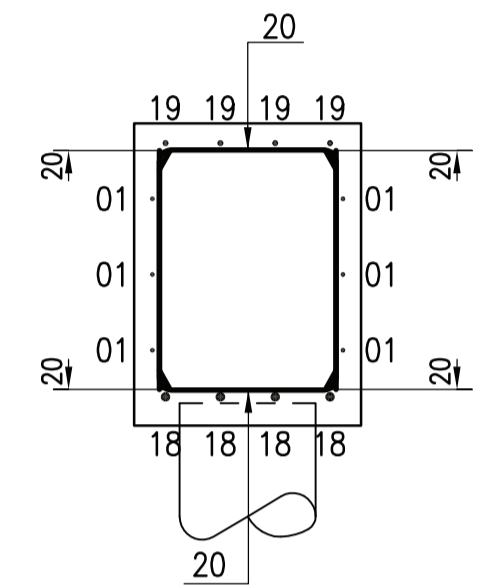
PILECAP TYPE 'PC3'
(1250mm DEEP)
(5 No. TOTAL)



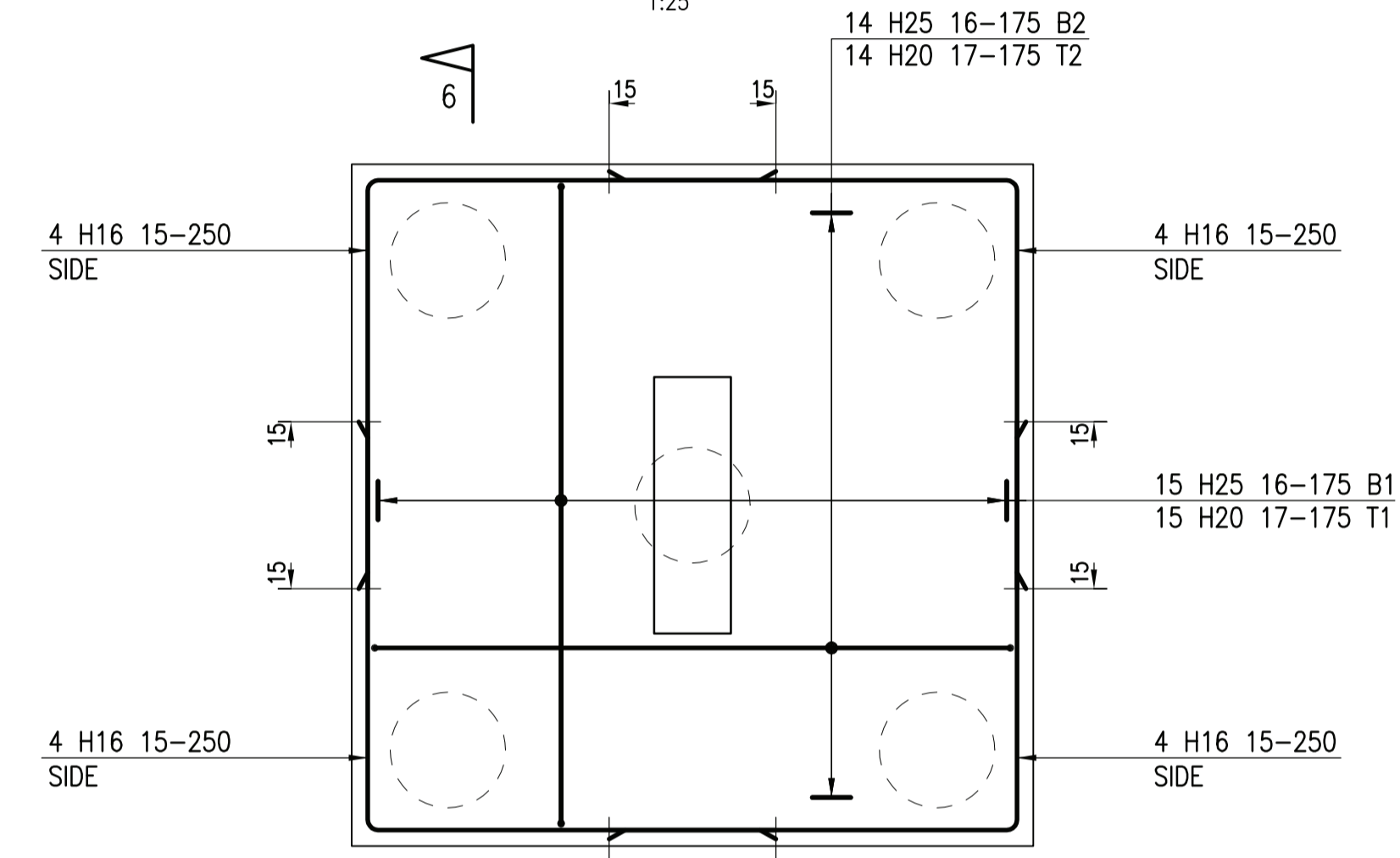
SECTION 3-3
1:25



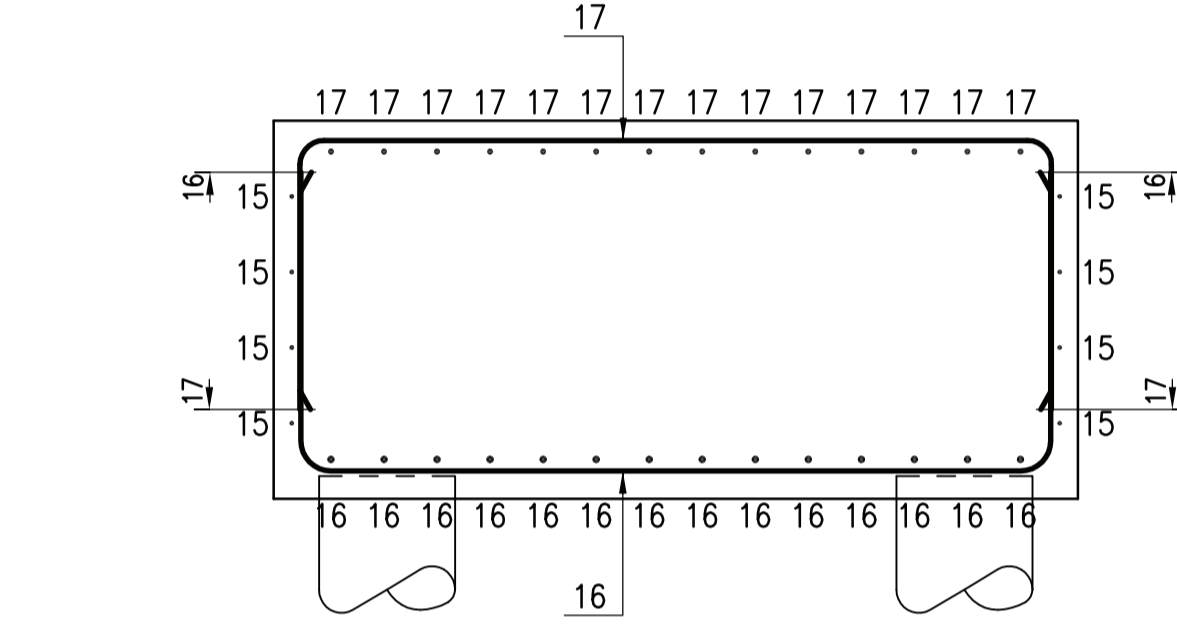
PILECAP TYPE 'PC2A'
(1000mm DEEP)
(1 No. TOTAL)



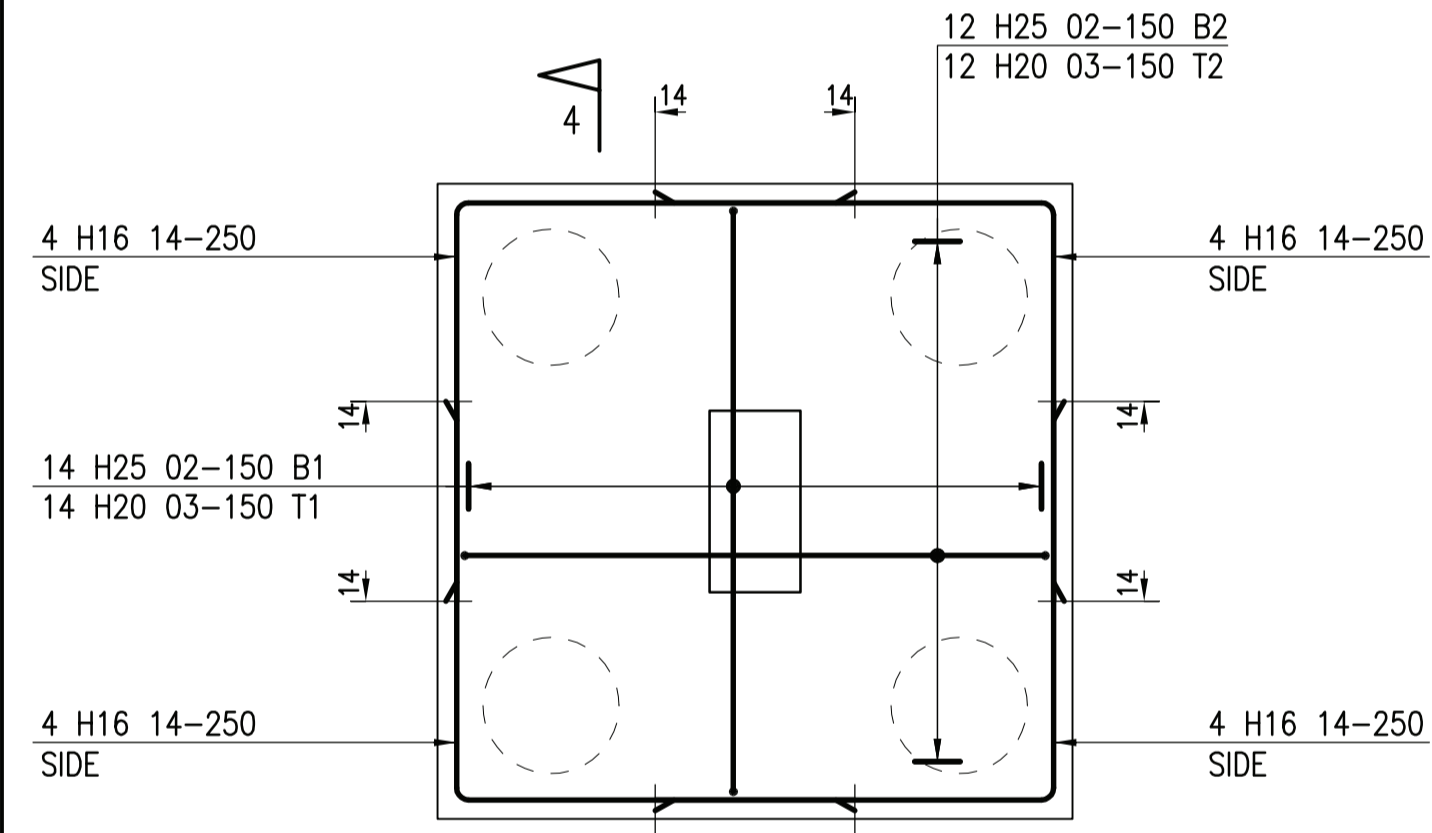
SECTION 2-2
1:25



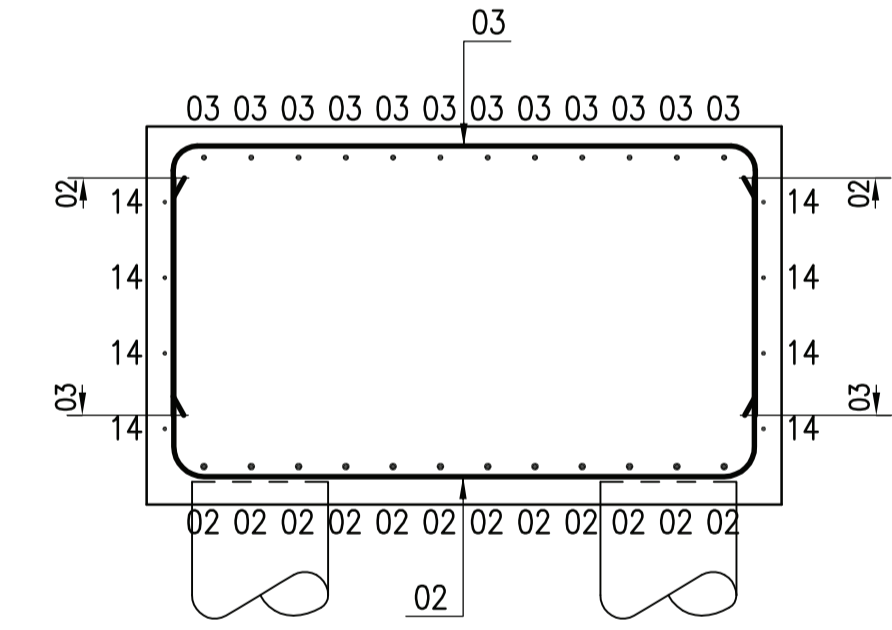
PILECAP TYPE 'PC5'
(1250mm DEEP)
(5 No. TOTAL)



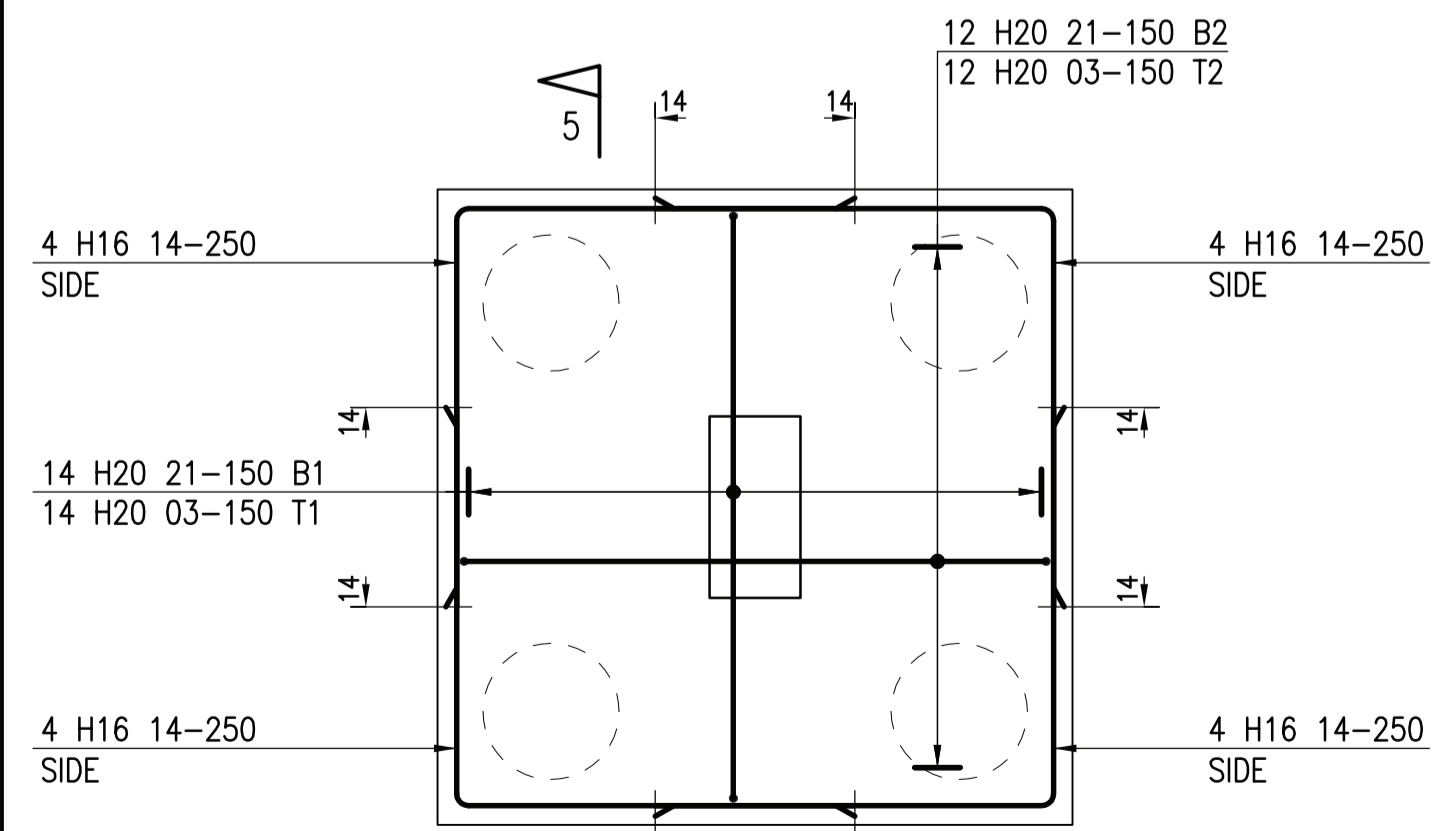
SECTION 6-6
1:25



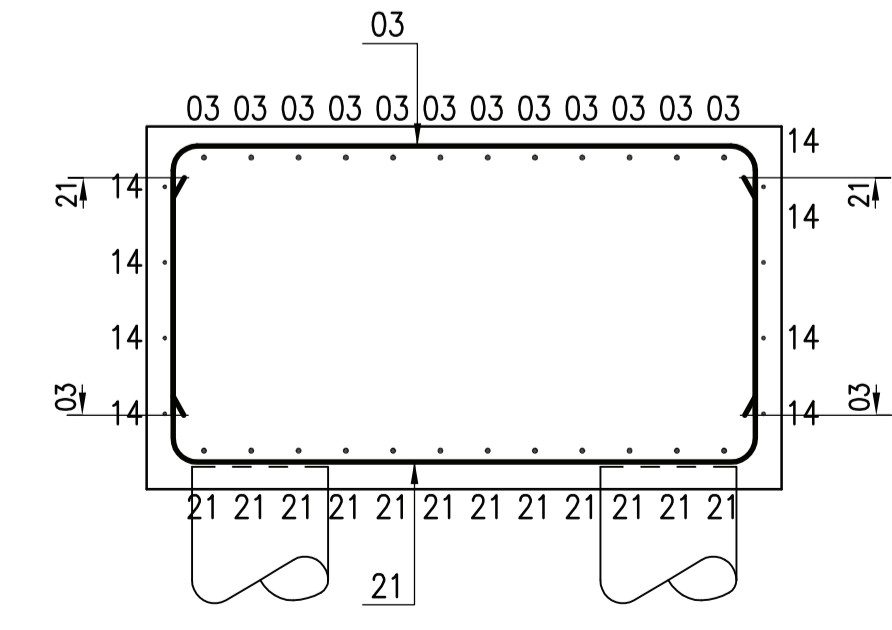
PILECAP TYPE 'PC4'
(1250mm DEEP)
(7 No. TOTAL)



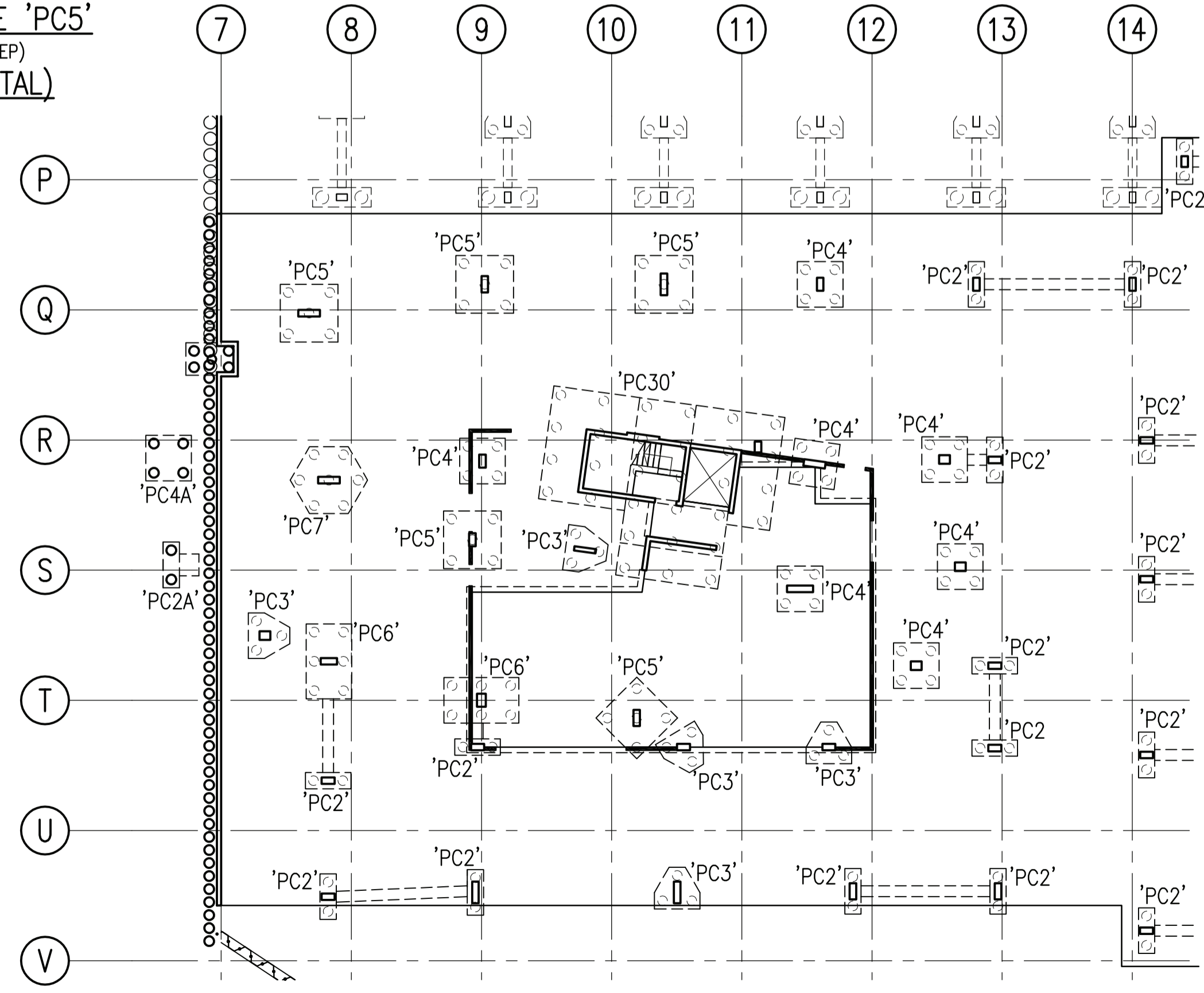
SECTION 4-4
1:25



PILECAP TYPE 'PC4A'
(1200mm DEEP)
(1 No. TOTAL)



SECTION 5-5
1:25



KEY PLAN
1:200

- NOTES:**
- THIS DRAWING IS TO BE READ IN CONJUNCTION WITH ALL RELEVANT ENGINEERS, ARCHITECTS AND SPECIALIST DRAWINGS AND THE SPECIFICATION.
 - COVER TO REINFORCEMENT TO BE AS FOLLOWS:
50mm - TOP AND SIDES
75mm - BOTTOM
FABRICATION TO BE SUBJECT TO QUALITY ASSURANCE SYSTEM ALLOWING $\Delta c_{dev} = 5mm$ (EC2)
 - REINFORCEMENT IS LISTED ON BENDING SCHEDULE Nos. 4643/R/01/01-03
 - MINIMUM REINFORCEMENT LAPS ARE TO BE AS FOLLOWS:
H8 = 350mm H10 = 400mm H12 = 500mm
H16 = 650mm H20 = 800mm H25 = 1000mm
H32 = 1300mm H40 = 1600mm
 - ASSUMED KICKER - 150mm.

| | | | | |
|------|----------|--------------------------|----|-----|
| 0 | 24.01.14 | ISSUED FOR CONSTRUCTION. | AW | KJ |
| Rev. | Date | Revision | By | Chk |

CONSTRUCTION

Drawing Title
PHASE 3 - BLOCK G
RC DETAILS OF PILE CAPS
SHEET 1 OF 2