



The Ararat Project – Stavely's forgotten project
Stawell Gold Corridor Conference, 27 November 2024

Finding the energy metals the world needs for a low-carbon future



- This presentation contains only an overview of Stavely Minerals Limited (“Stavely” or the “Company”) and its activities and operations. The contents of this presentation, including matters relating to the geology and exploration potential of the Company’s projects, may rely on various assumptions and subjective interpretations which it is not possible to detail in this presentation and which have not been subject to any independent verification.
- This presentation contains a number of forward-looking statements. Known and unknown risks and uncertainties, and factors outside of the Company’s control, may cause the actual results, performance and achievements of the Company to differ materially from those expressed or implied in this presentation.
- To the maximum extent permitted by law, Stavely does not warrant the accuracy, currency or completeness of the information in this presentation, nor the future performance of the Company, and will not be responsible for any loss or damage arising from the use of the information.
- The information contained in this presentation is not a substitute for detailed investigation or analysis of any particular issue. Current and potential investors should seek independent advice before making any investment decision in regard to the Company or its activities.



What does Stavely Minerals offer that is different?



BIG targets





Stavely Project - Thursday's Gossan Prospect

- High-Grade Cayley Lode Cu-Au-Ag discovery
 - **9.3Mt at 1.23% Cu, 0.23g/t Au and 7.1g/t Ag²**
 - *Commercial Viability Study in-progress*
- Junction Lode
 - *35m at 3.44% Cu and 26g/t Ag*
 - *New structural interpretation provides discovery opportunity*
 - *Recent aircore drilling results were outstanding*
- S41 Breccia-Hosted Gold
 - *~2km long x 750m wide hydrothermal breccia, potential for scale*
 - *only 1 x diamond drill hole to date*
 - *Carbonate – base metal – gold system eg.: Kidston, Mt Leyshon, Kelian*



Hawkstone Magmatic Ni-Cu-Co Project¹

- Adjacent to IGO / Buxton Merlin / Double Magic discovery – ave. 8% Ni tenor, new Dogleg discovery – emerging magmatic nickel province
 - *Eg. Nova & Bollinger, Jinchuan, Voisey's Bay*

¹see ASX announcement 23 May 2023

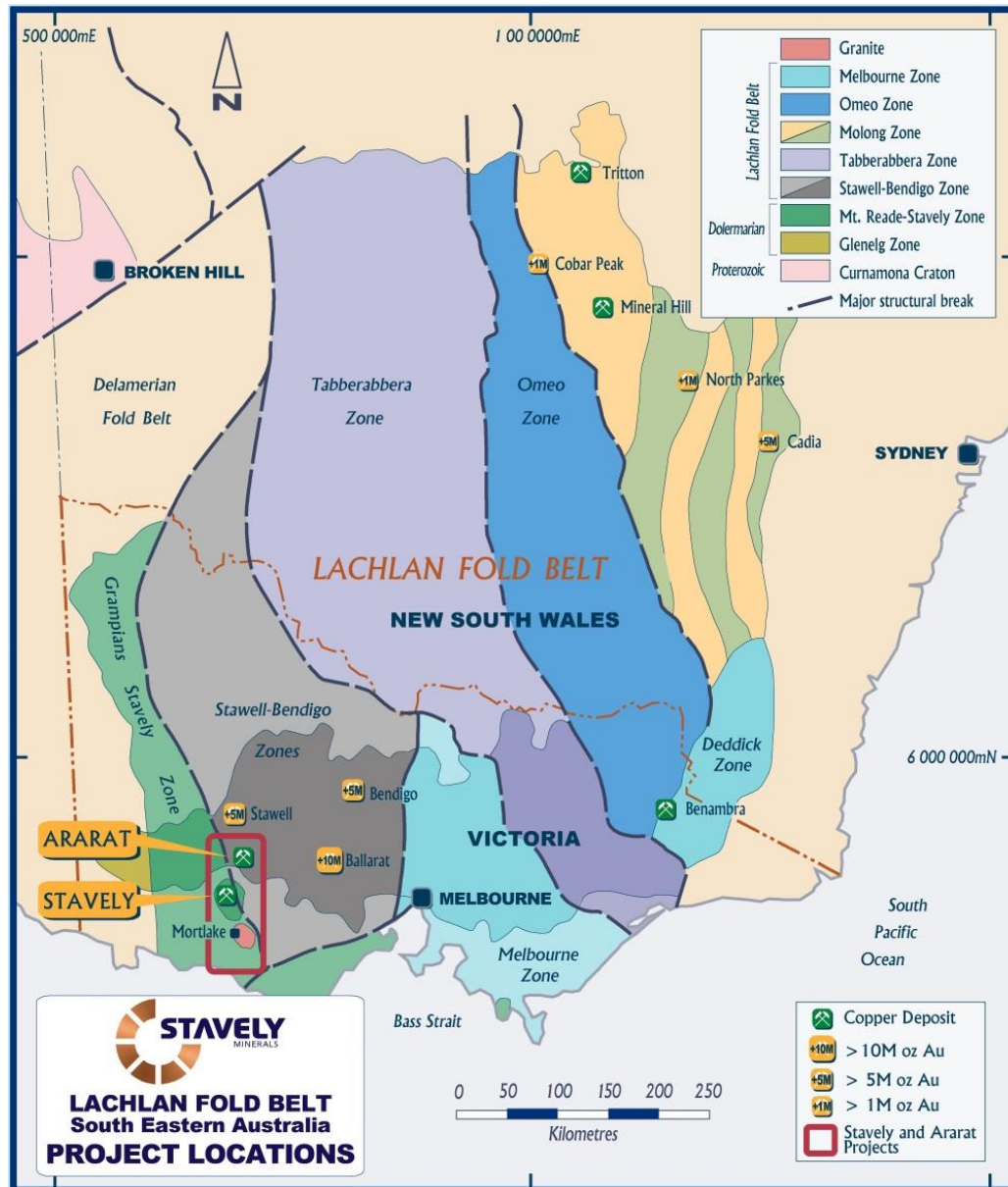
²See ASX announcement 14 June 2022, Appendix 1





The Ararat Project

The Ararat Project Location



The Ararat Project is located in the Moornambool Metamorphic Complex within the Stawell-Bendigo Zone, and is prospective for VMS base metals-gold and 'Stawell-style' gold mineralisation.

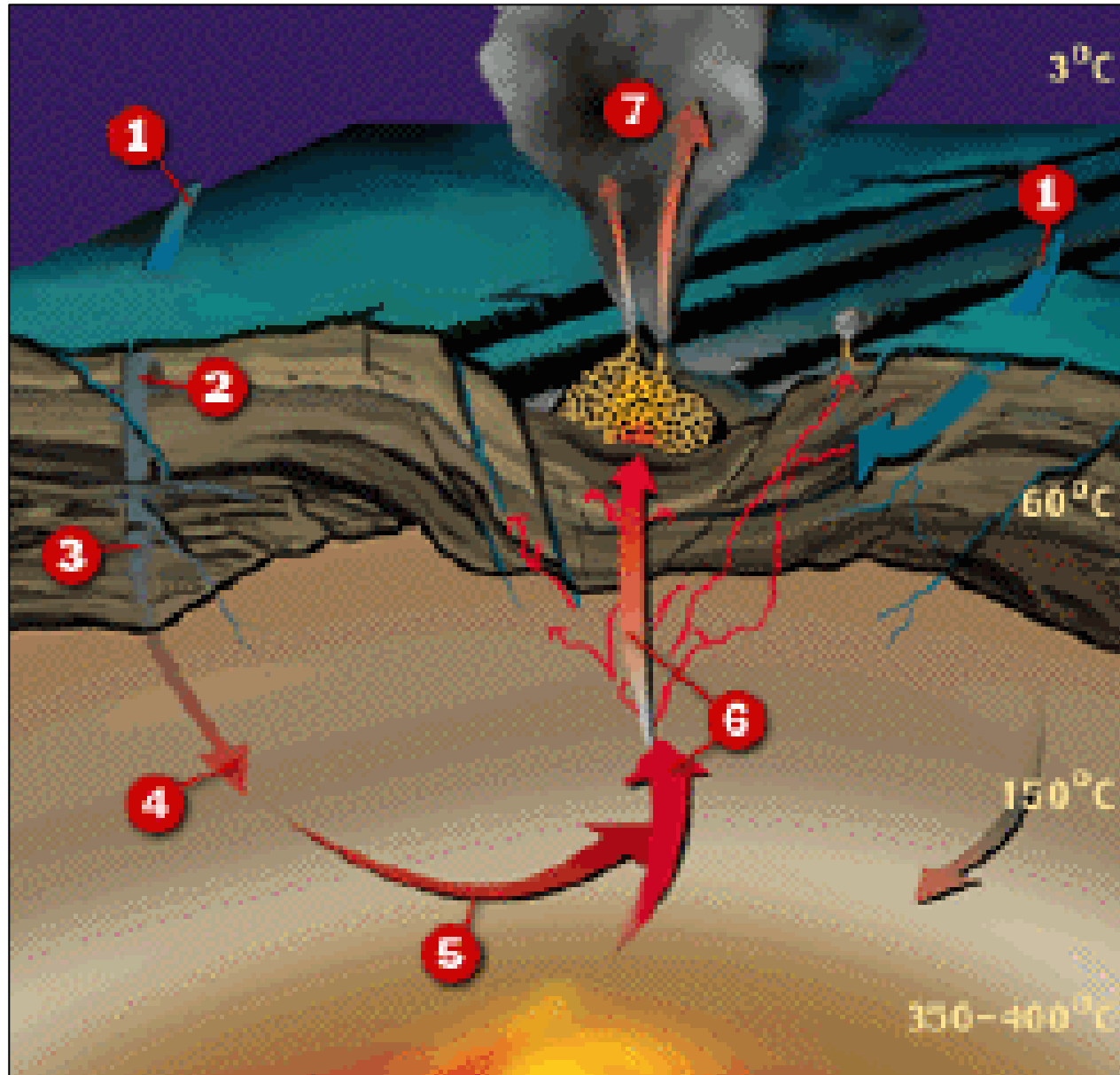
The Stavely Project is located in the Grampians / Stavely Zone, is prospective for ancient porphyry copper-gold, VMS base metals-gold and intrusive related gold mineralisation.



Carroll's VMS



Carroll's VMS



The Carroll's Besshi-style copper-gold VMS is an ancient sea-floor 'black smoker' – they tend to occur in clusters of typically 6-8 deposits

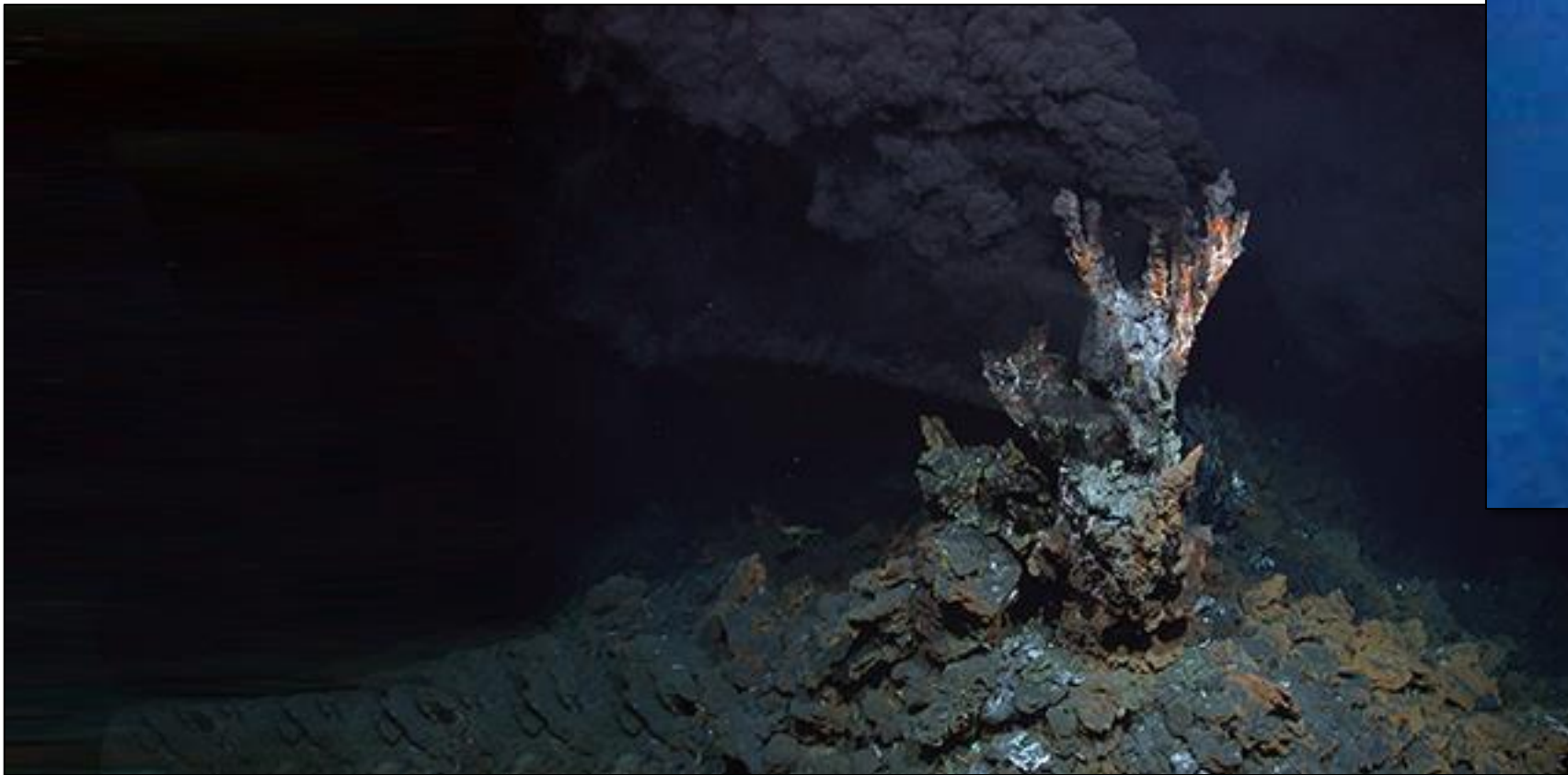
To date, we have identified 1 deposit – The Carroll's VMS and one insipient system, the Forgan's Find system.

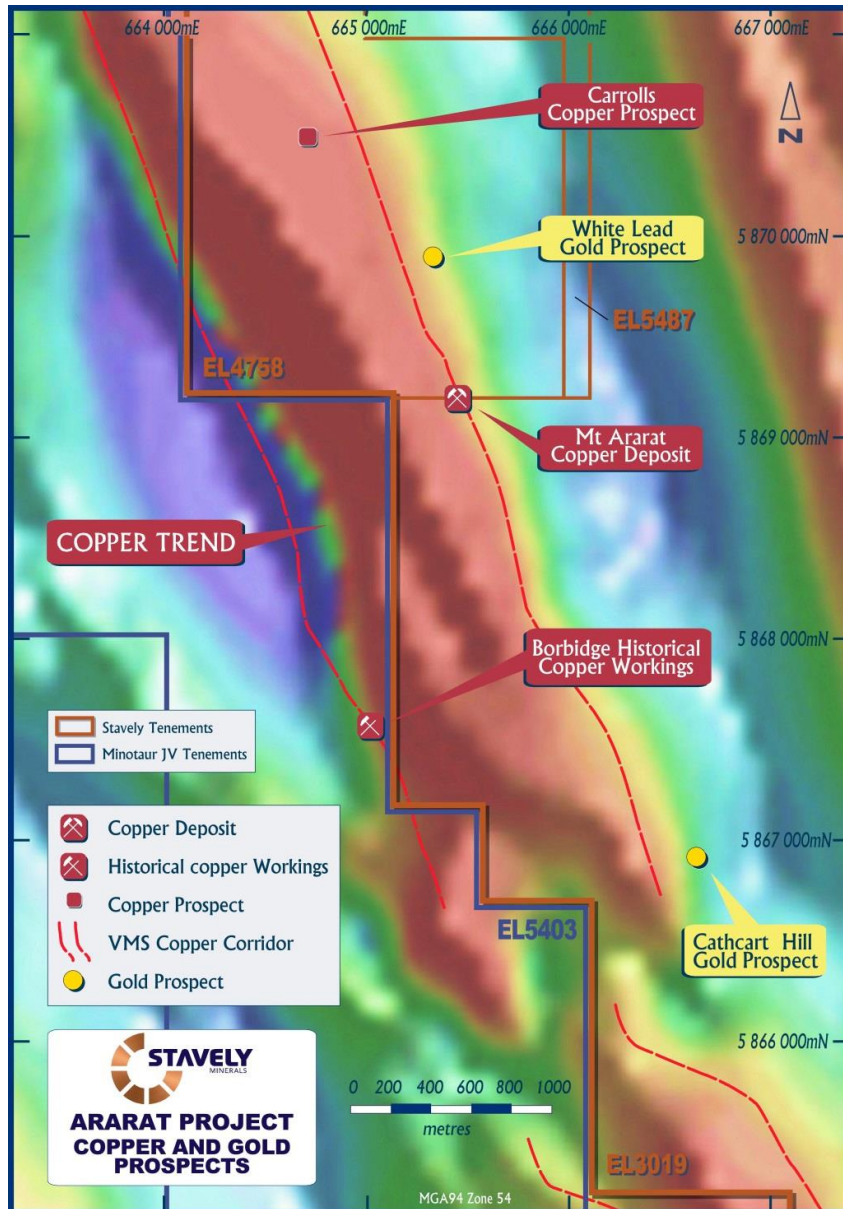
The Carroll's VMS Mineral Resources Estimate¹



At the Ararat Project, a Besshi-style VMS:

- Inferred Mineral Resources of 1.0Mt at 2.2% copper, 0.4 g/t gold, 0.2% zinc and 5.6 g/t silver



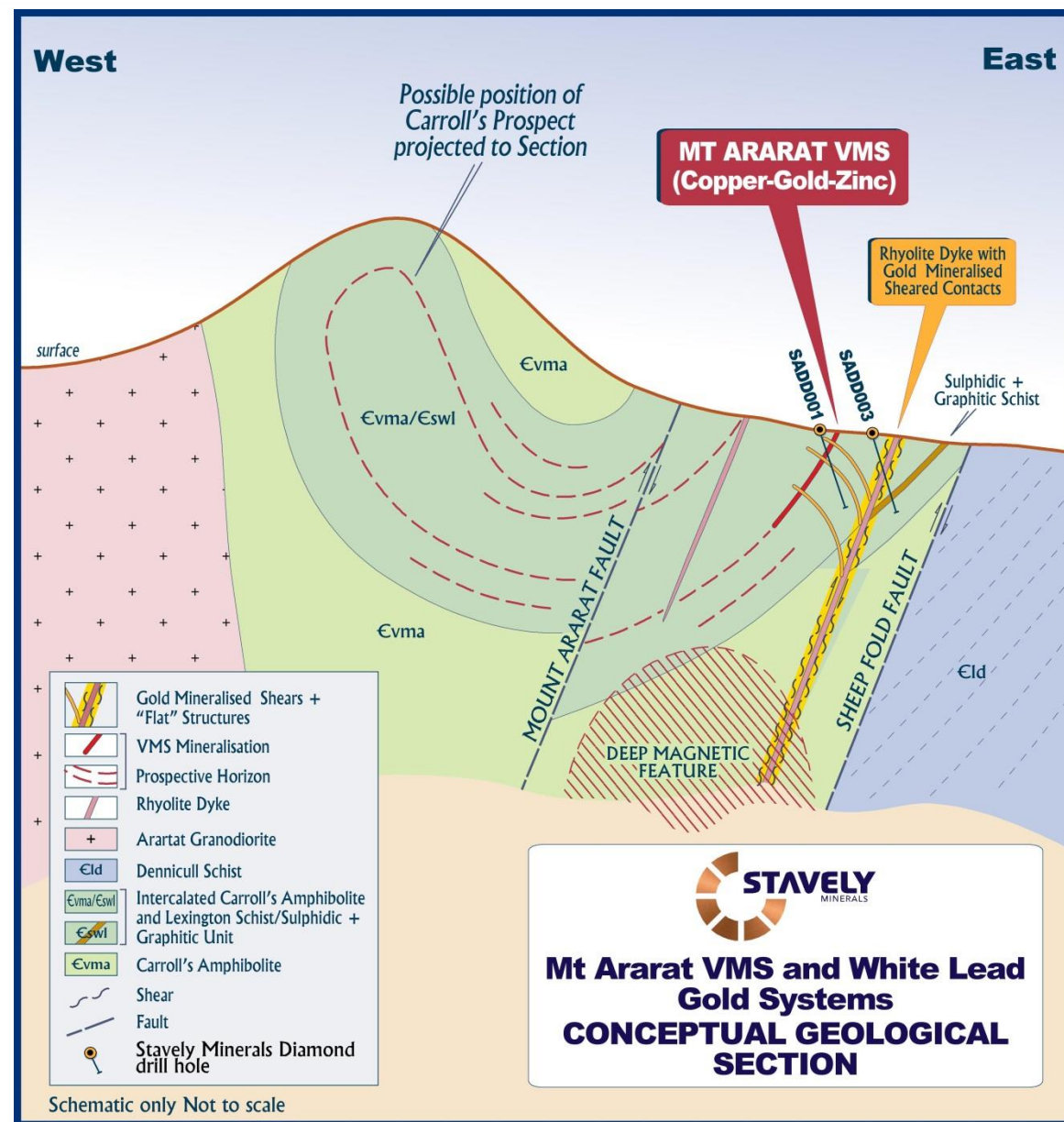


- ✓ Prospective VMS copper-gold horizon extends over 15 kilometres within Stavely Minerals tenements.
- ✓ Recent reconnaissance exploration has confirmed the horizon is up to 1km wide
- ✓ 'Stawell-style' gold / arsenic anomalies along 4-5km of strike and open to north and south

Conceptual Model

- Multiple VMS target horizons – circa 530Ma age
- Steep west dipping gold feeder structures and shallow east-dipping horse-tail splays – circa 425Ma age

¹ see ASX announcement dated 6 July 2015

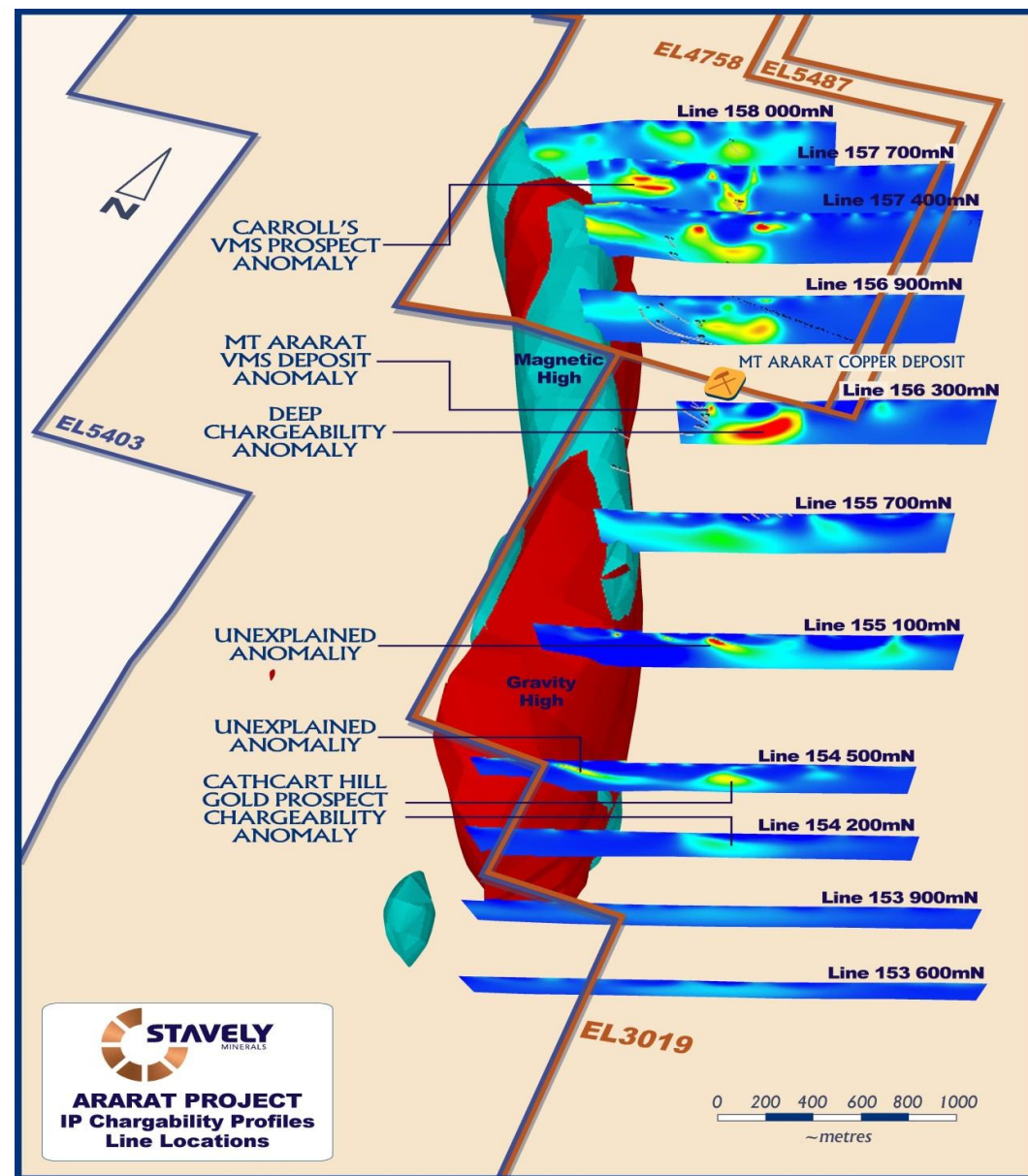


The Ararat Project Geophysics

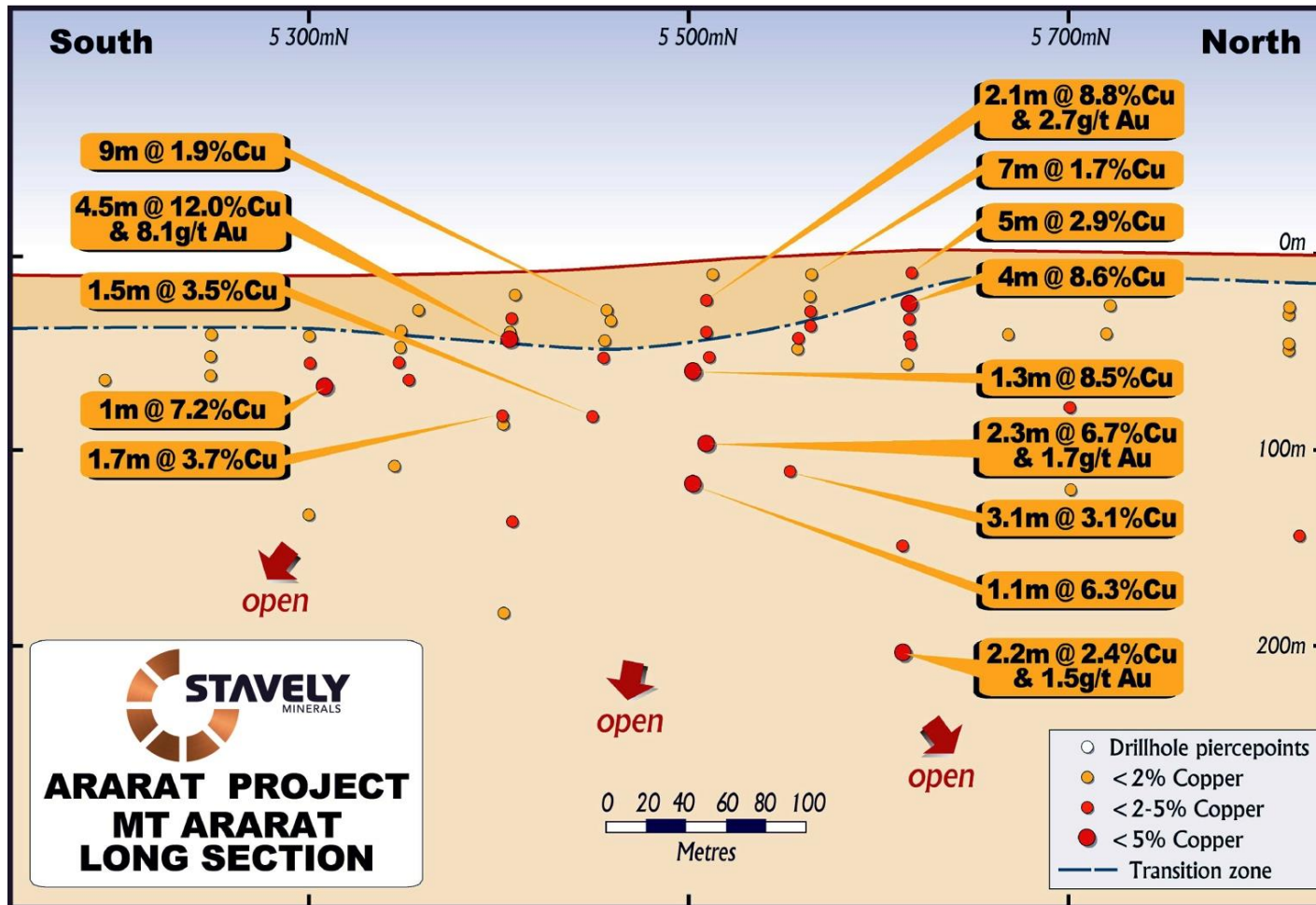


Regional Geophysics

- Recent gravity survey has provided important information on the structural architecture and deep rock types
- Recent regional Induced Polarisation (IP) survey has highlighted multiple VMS and gold targets



¹ see ASX announcement dated 25 September 2015



- Mt Ararat Besshi-style VMS – Inferred Mineral Resource of 1.3Mt at 2.0% copper, 0.5g/t gold, 0.4% zinc and 6g/t silver
- The Degruusa deposit is considered (by some) to be a Besshi-style VMS
- Open at depth and along strike

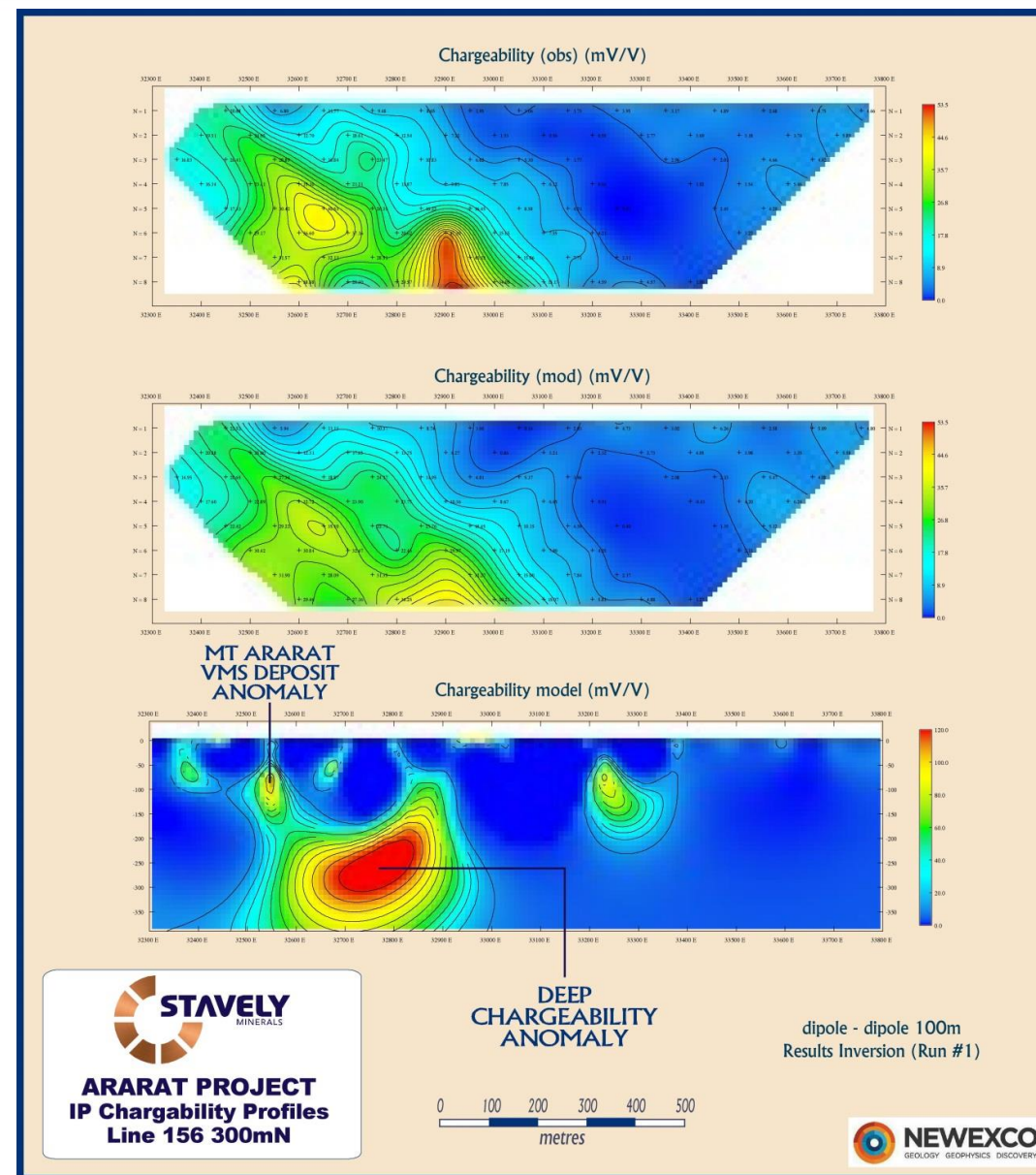


Carroll's Geophysics

Existing VMS deposit is reflected by the small IP chargeability feature

A much larger deep IP chargeability anomaly untested by any drilling

¹ see ASX announcement dated 25 September 2015





Forgan's Find VMS

Forgan's Find



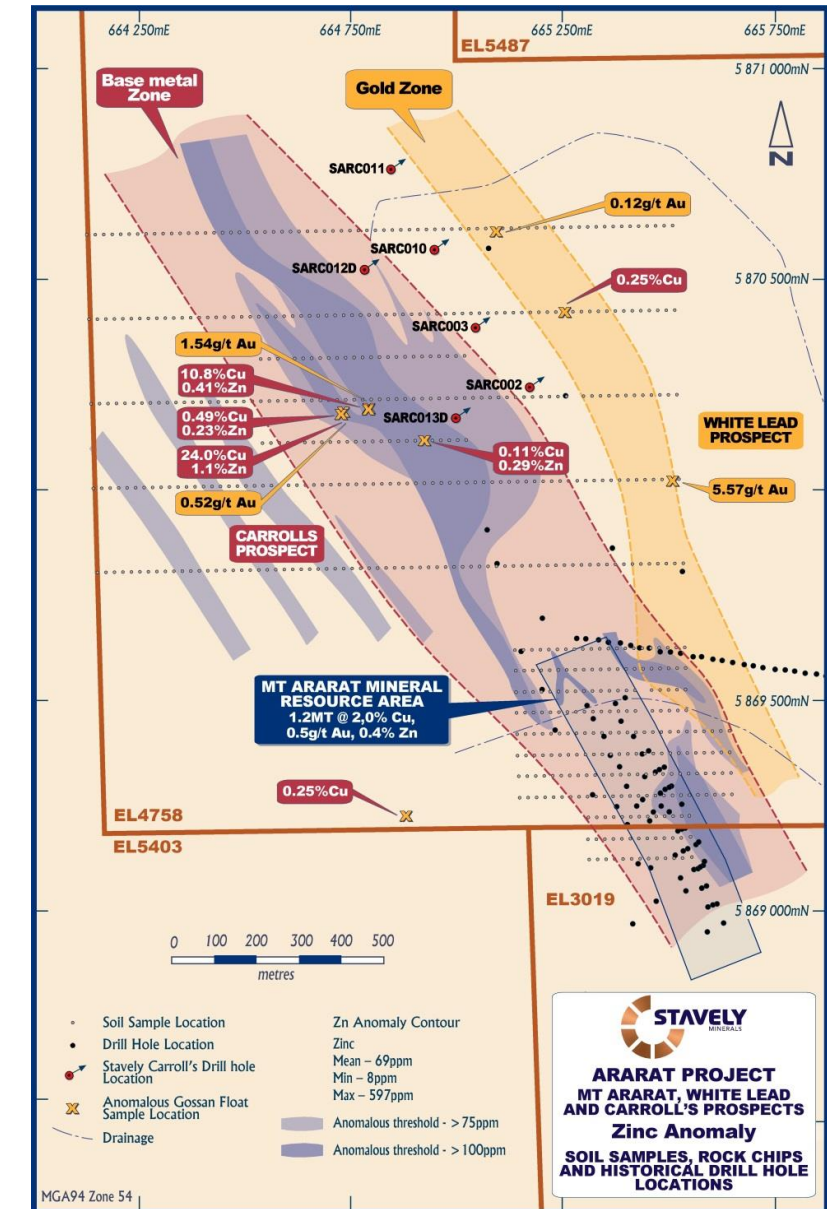
Forgan's Find Prospect Geochemistry

Multiple mineralised horizons confirmed with Forgan's Find prospect with rock-chip results including:

- 10.8% copper, 0.41% Zn and 1.5g/t gold
- 24% copper, 1.1% zinc and 0.52g/t gold



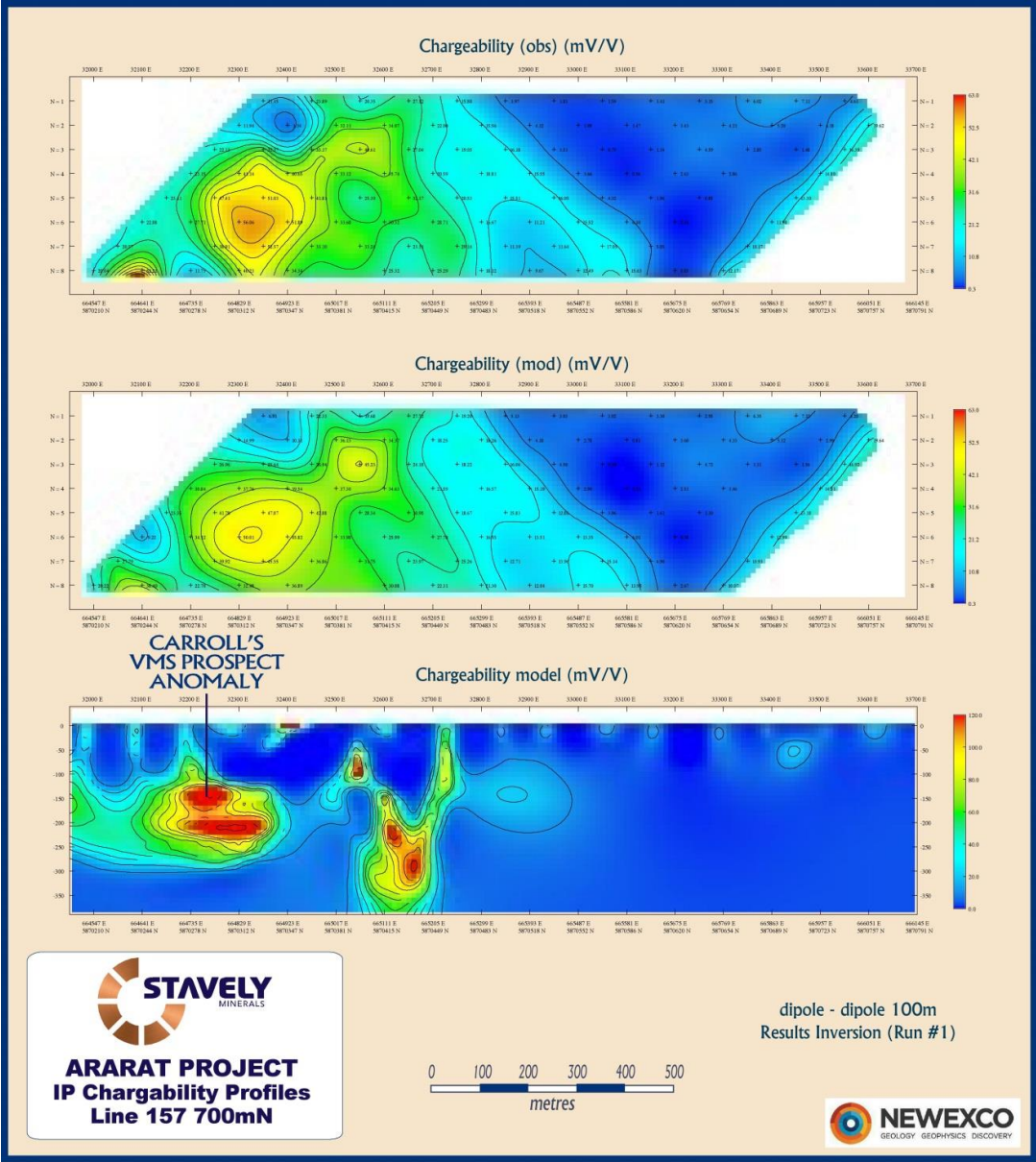
see ASX announcement dated 8 May 2015





Forgan's Find Prospect Geophysics

Very strong IP chargeability anomaly coincident with soil zinc-copper geochemical anomaly and in-situ rock chips to 10.8% copper and 1.5g/t gold



see ASX announcement dated 25 September 2015



Ararat Project Gold Potential



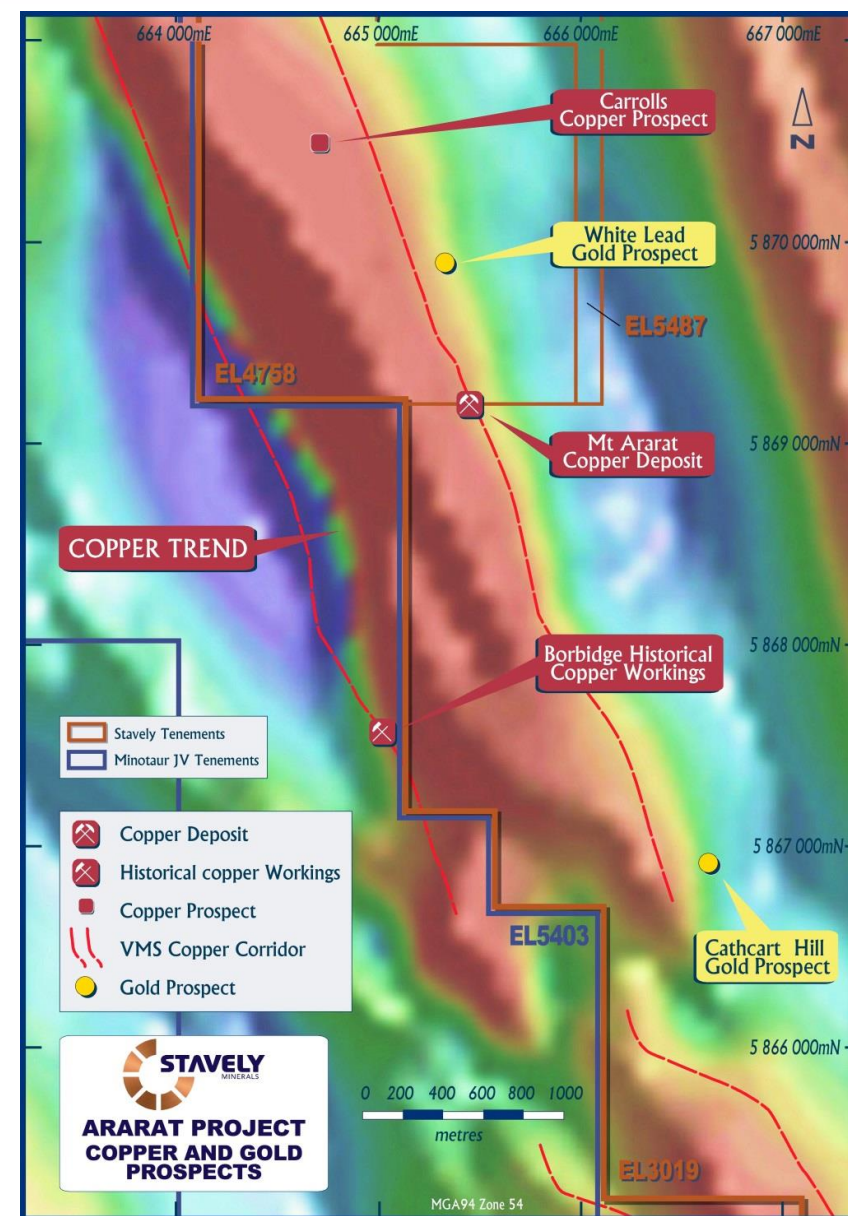
- The Ararat goldfield produced ~640,000oz from alluvials and deep leads
- No hardrock source identified.

Ararat Project – Gold Discovery Opportunities



Stawell-style gold potential– Two new gold prospects identified in soil sampling

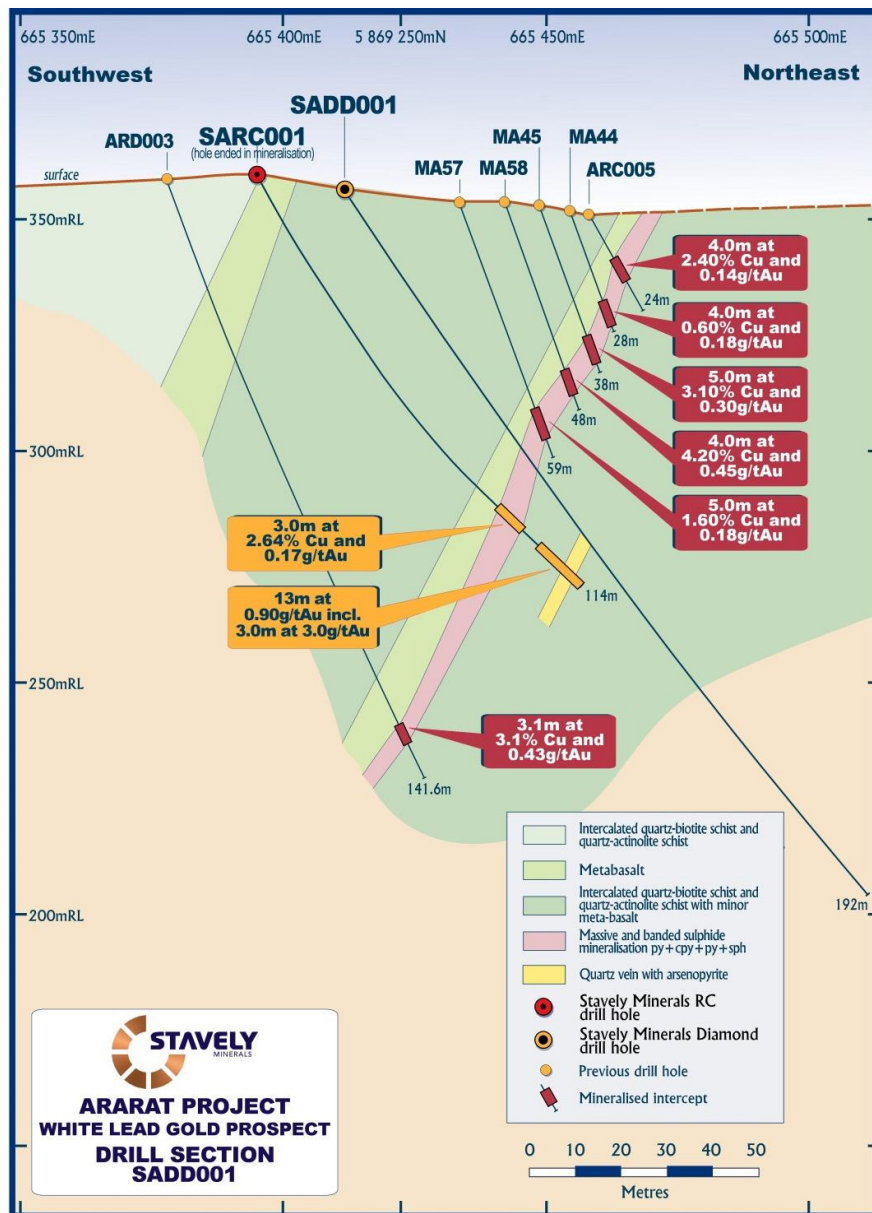
- Cathcart Hill
- White Lead





White Lead Gold Prospect

White Lead Gold Prospect



Stawell-style gold potential

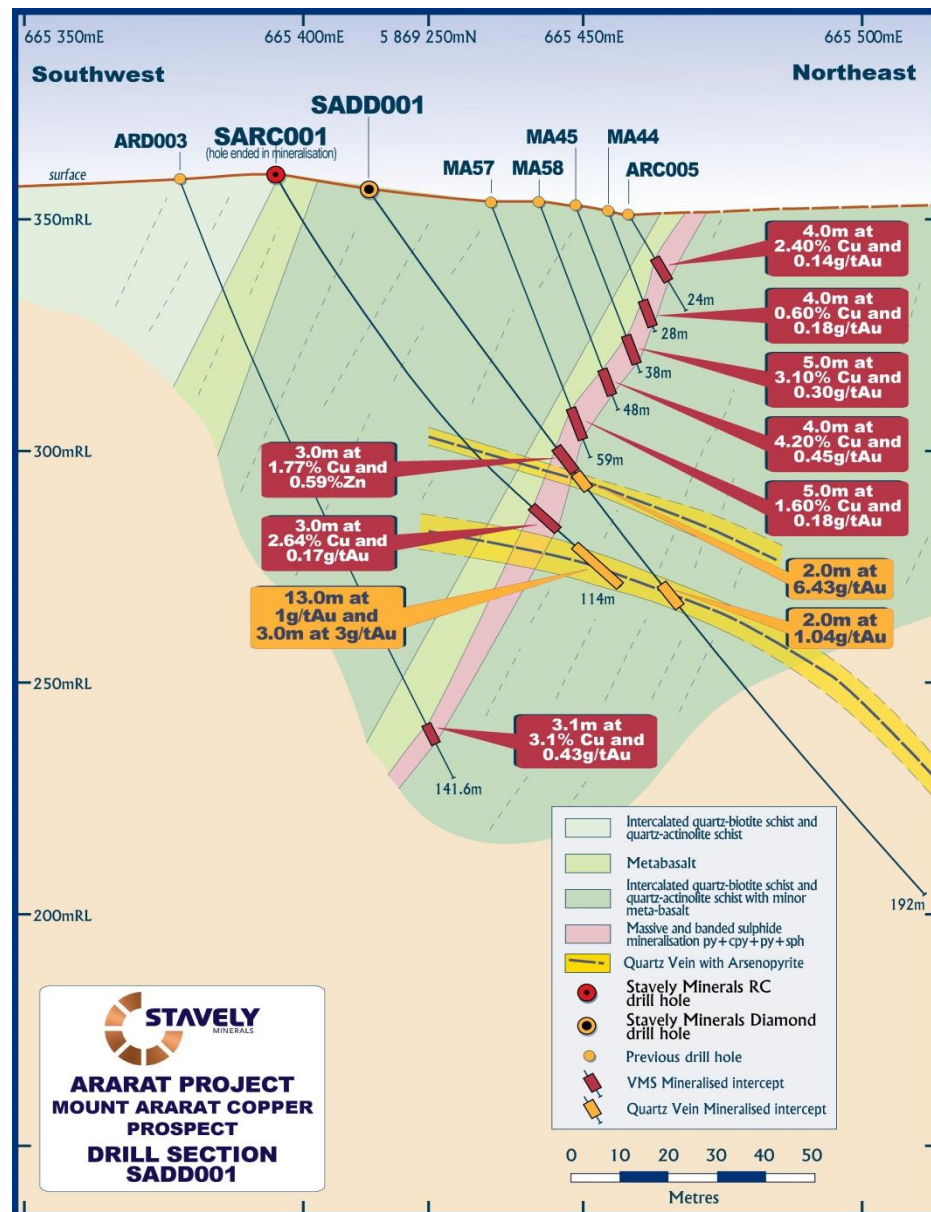
Unexpectedly, drill hole SARC001 also intersected 13m at 1g/t gold (to EoH) including a significant higher grade zone of:

- 3m at 3.04 g/t gold

3 follow-up diamond drill holes completed

see ASX announcement dated 10 September 2014

White Lead Gold Prospect



White Lead Gold Prospect

- 3 diamond drill holes completed
- 2m at 6.43g/t gold including 1m at 11.3g/t gold
- Drilling confirms structural geometries and potential for better developed gold mineralisation in more reactive iron-rich host units

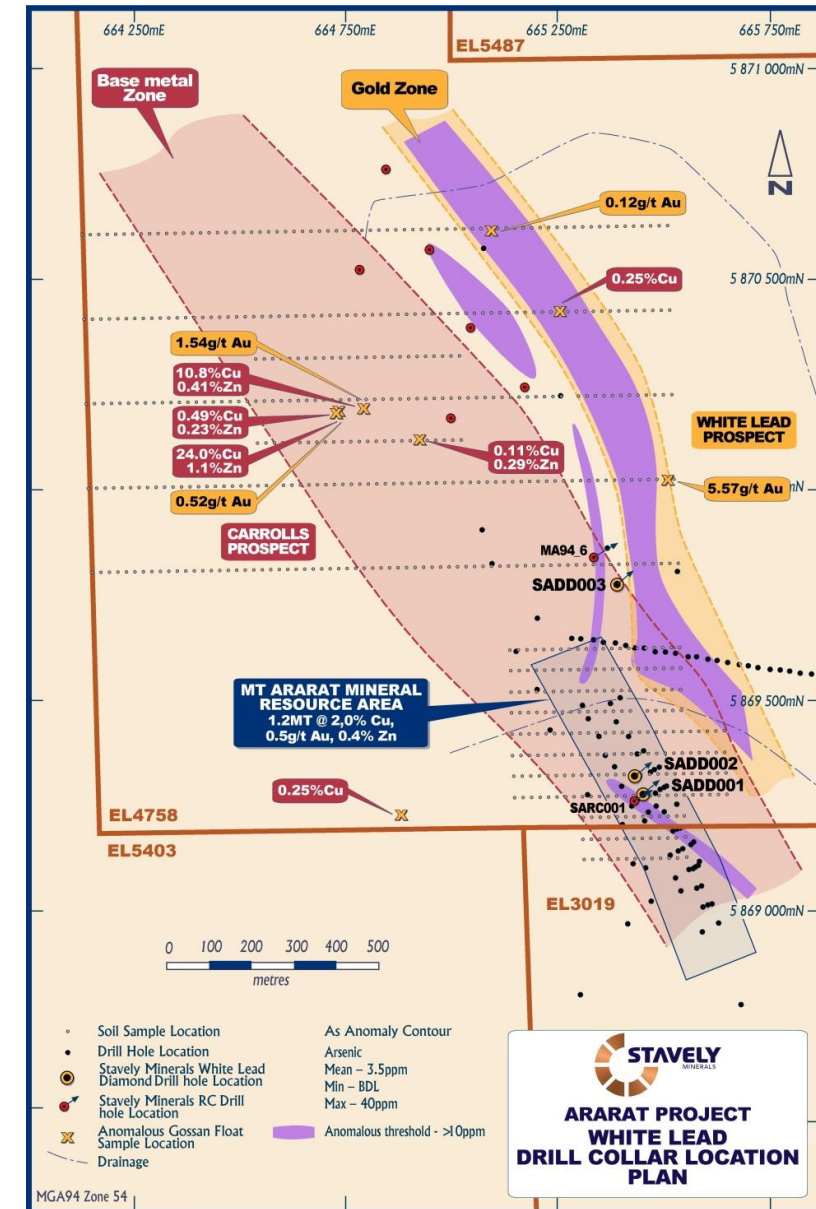
¹ see ASX announcement dated 8 May 2014

White Lead Gold Prospect



White Lead Gold Prospect

- Newly discovered gold prospect
- Arsenic, chromium, copper, lead ('Stawell signature') soil anomaly 1km long and open to the north and south
- Rock-chips to 5.6g/t gold
- Likely source of the White Lead alluvial gold production – part of the Cathcart Goldfield





Cathcart Hill Gold Prospect

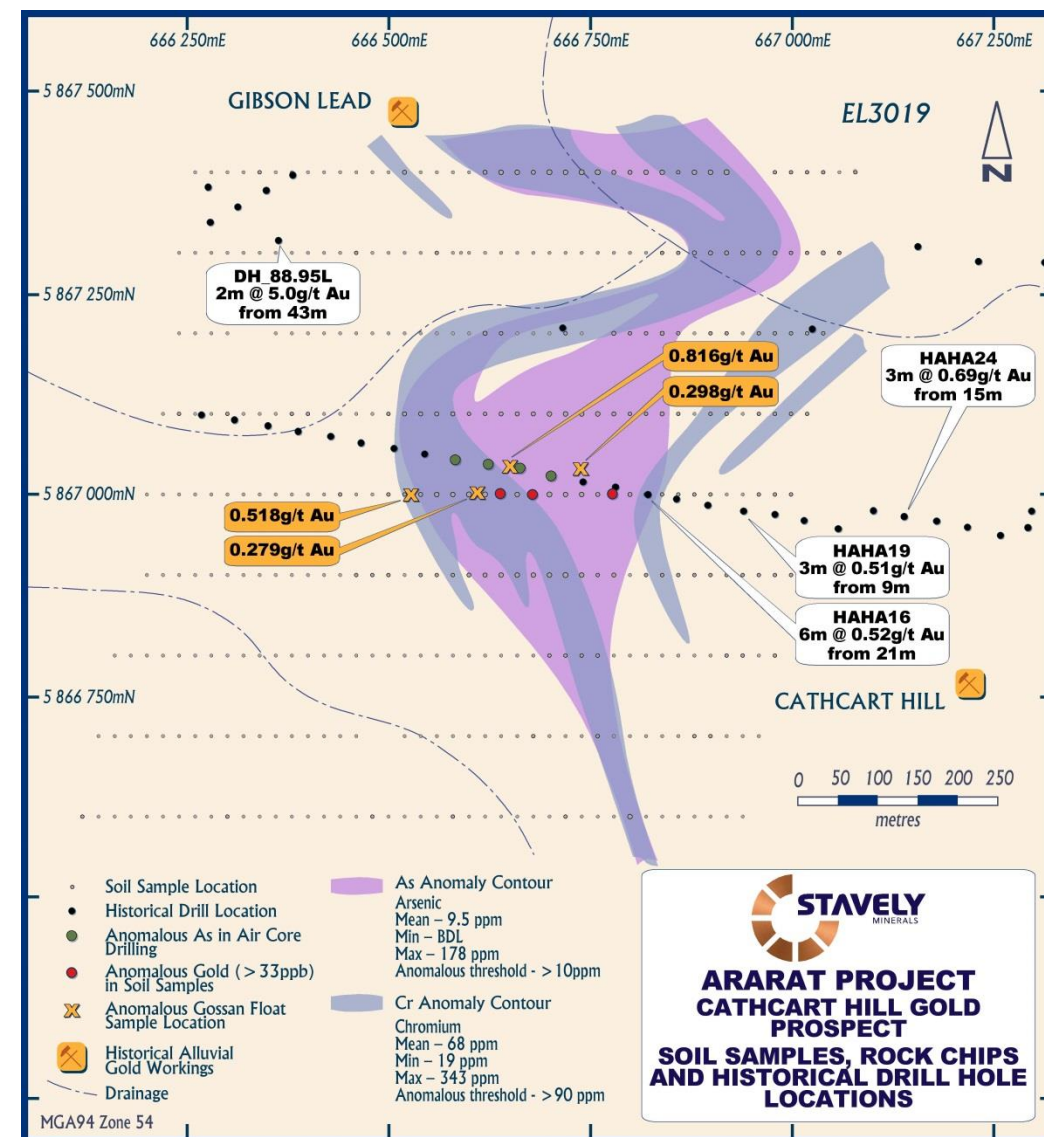
Cathcart Hill Gold Prospect



Cathcart Hill Gold Prospect

- Newly discovered gold prospect
- Arsenic, chromium ('Stawell-signature') soil anomaly 800m long and open to the north and south
- Soils to 622ppb Au, 447ppb Au and 426ppb Au amongst other strongly anomalous results.
- Rock-chips of 'pseudo-gossan' to 0.8g/t gold
- Nearby historic diamond drill hole intercept 2m at 5g/t gold from 43m drill depth

¹ see ASX announcement dated 29 April 2014

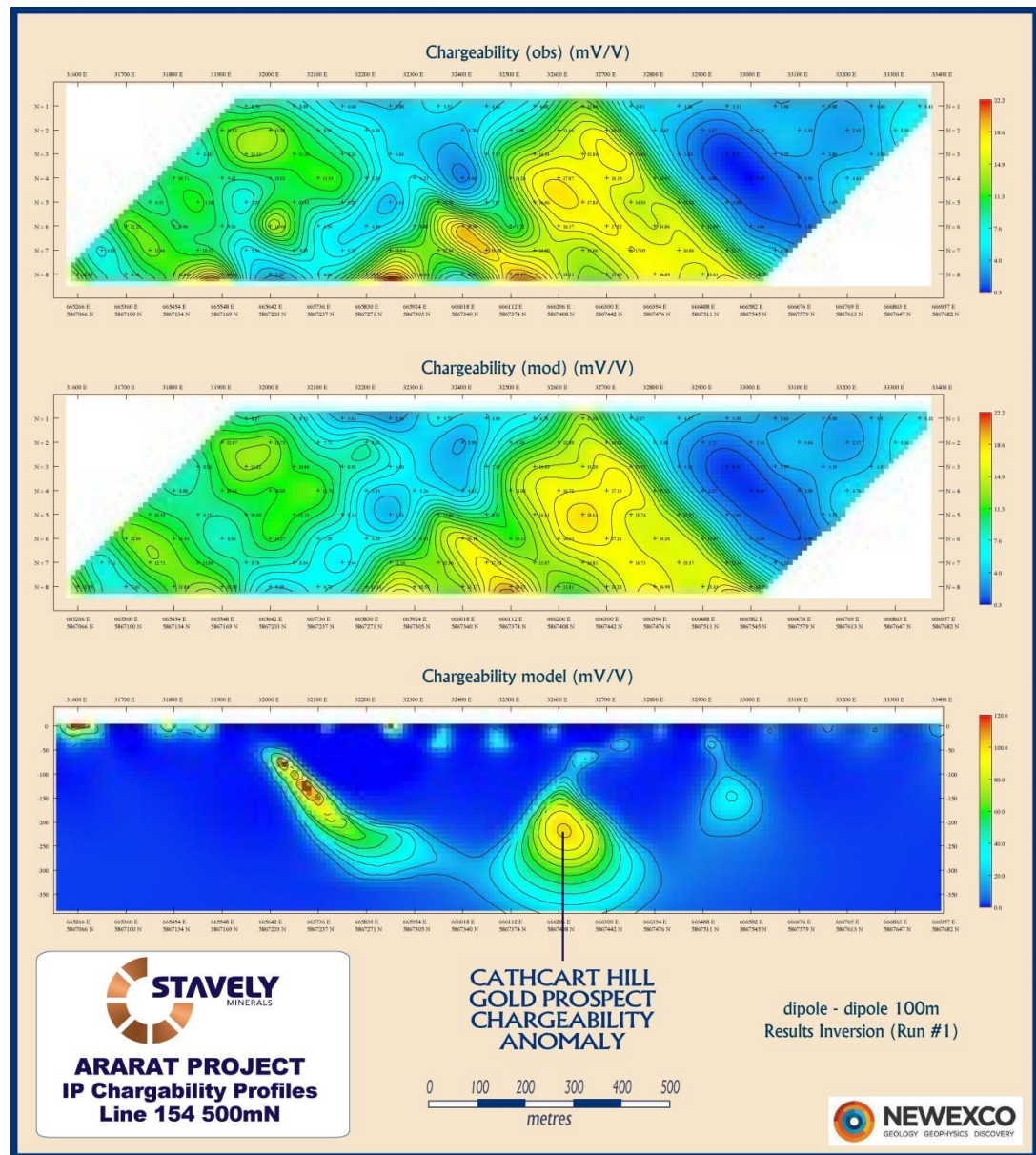


Cathcart Hill Gold Prospect



Cathcart Hill Geophysics

Strong IP chargeability anomaly coincident with gold-arsenic-chrome geochemical anomaly – Stawell-style signature



¹ see ASX announcement dated 25 September 2015

Plenty of Gold Discovery Opportunities



Other Geophysical Anomalies

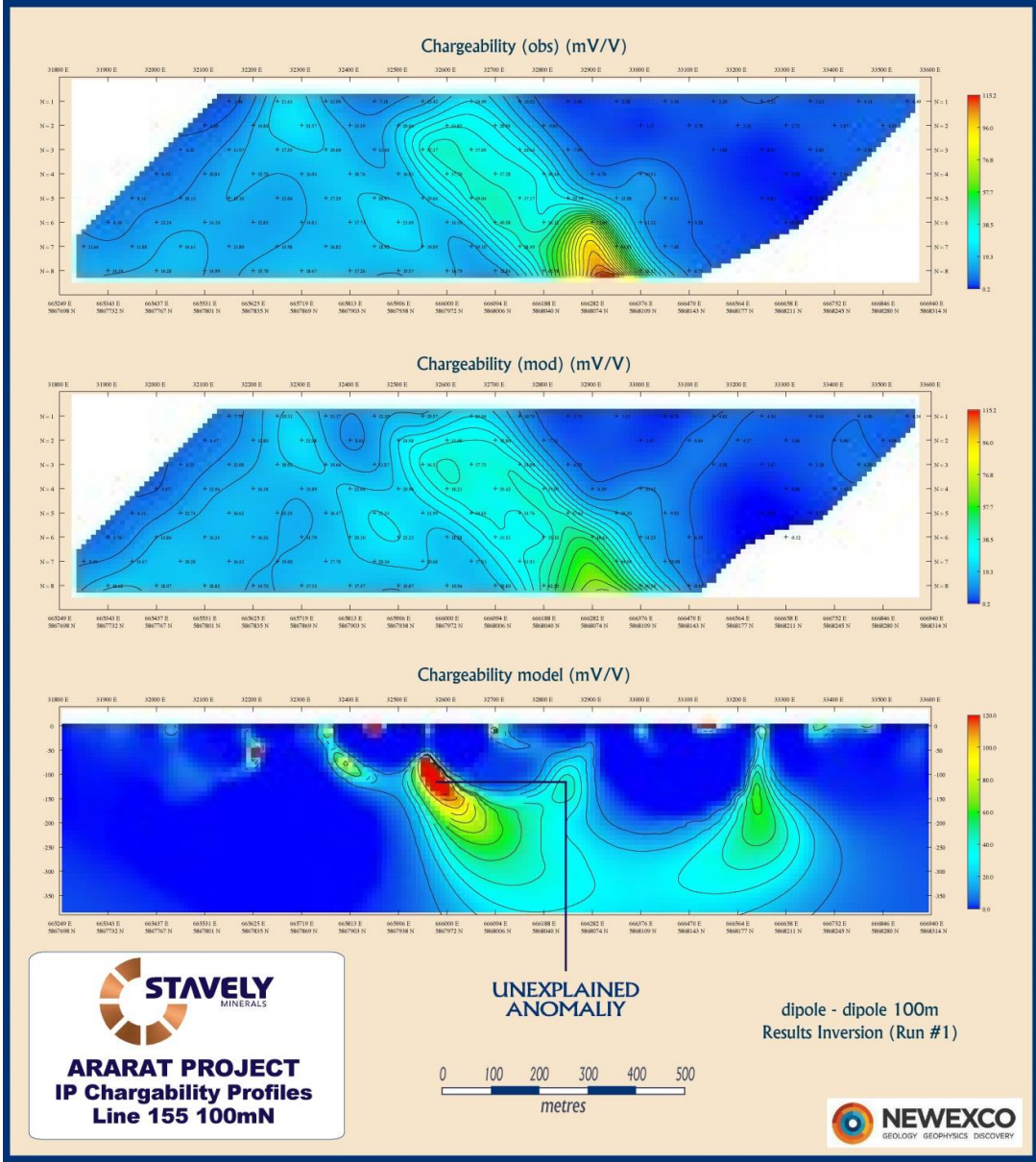
Strong IP chargeability anomalies with shallow east dip consistent with the geometries observed in recent gold drill intercepts:

- ✓ 2m at 6.34g/t gold including:
- ✓ 1m at 11.3g/t gold

Lots of smoke, plenty of gold discovery opportunities.

Available for JV.

¹ see ASX announcement dated 25 September 2015





Junction Lode Discovery Opportunity

- **14m @ 3.24% Cu, 34.5g/t Ag** from 34m drill depth in SJAC105, including:
 - **8m at 4.62% Cu and 49.5g/t Ag** from 34m, including:
 - **2m at 6.47% Cu and 59.5g/t Ag** from 36m
- **48m at 1.60% Cu and 14.8g/t Ag** from 2m drill depth in SJAC112, including:
 - **8m at 2.53% Cu and 26.1g/t Ag** from 34m
- **40m at 1.59% Cu, 13.0g/t Ag** from 10m drill depth in SJAC103, including:
 - **6m at 3.79% Cu and 18.8g/t Ag** from 24m; and
 - **1m at 5.20% Cu and 34.2g/t Ag** from 60m to EoH
- **20m at 2.16% Cu and 21.6g/t Ag** from 18m in SJAC116, including:
 - **4m at 3.83% Cu and 21.7g/t Ag** from 32m
- **20m at 2.48% Cu and 24.4g/t Ag** from 32m in SJAC117, including:
 - **4m at 5.10% Cu and 51.6g/t Ag** from 38m
- **22m at 1.85% Cu and 19.6g/t Ag** from 28m in SJAC113, including:
 - **6m at 3.15% Cu and 33.2g/t Ag** from 32m
- **6m at 3.23% Cu and 9.2g/t Ag** from 2m in SJAC104, including:
 - **2m at 6.44% Cu and 9.5g/t Ag** from 2m, and
 - **4m at 1.15% Cu and 15.1g/t Ag** from 24m
- **2m at 1.09% Cu and 4.5g/t Ag** from surface in SJAC108



Junction Lode Discovery Opportunity

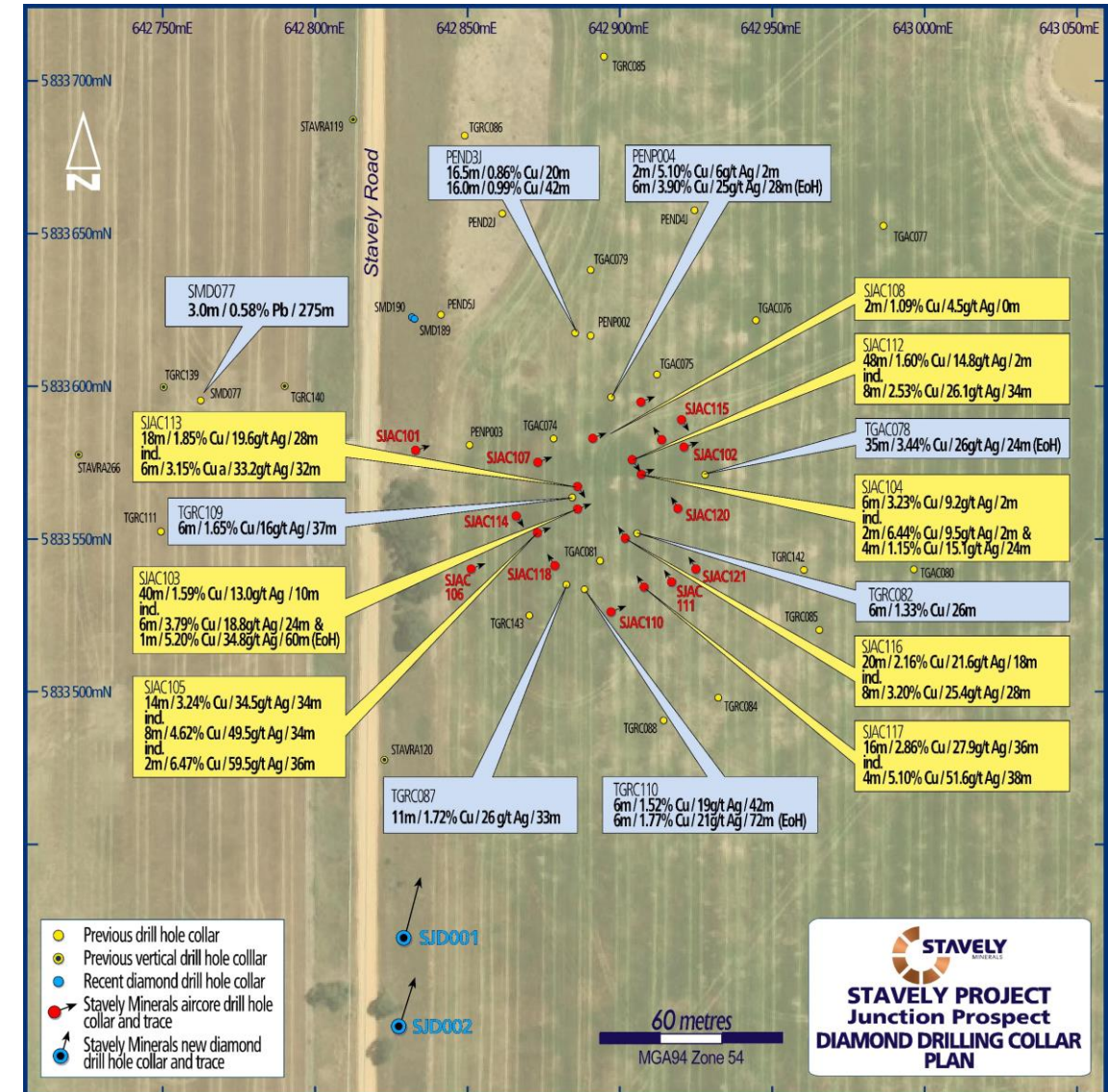


Recently completed SJD001¹ and SJD002 in-progress



Chalcopyrite, chalcocite and minor pyrite in vuggy quartz vein at 160.7m in SJD001.

¹ see ASX announcement 27 November 2024





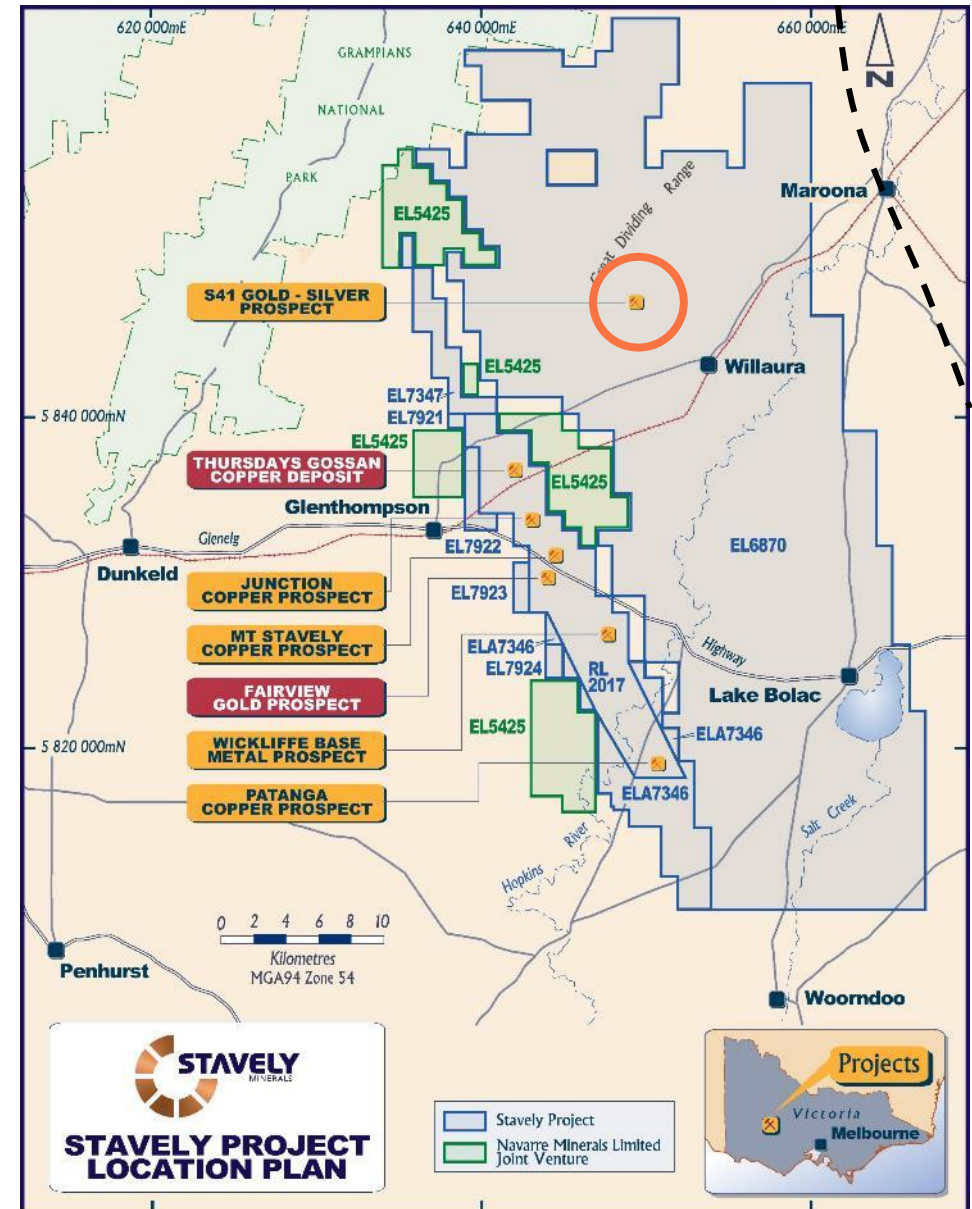
S41 Breccia-Hosted Gold Target

Emerging Discovery? – The S41 Breccia Prospect



S41 Breccia Prospect is located ~10km east of the Moyston fault

- While not located in the Stawell Zone, it is an older cousin living next door
- genuine gold discovery opportunity with scale potential

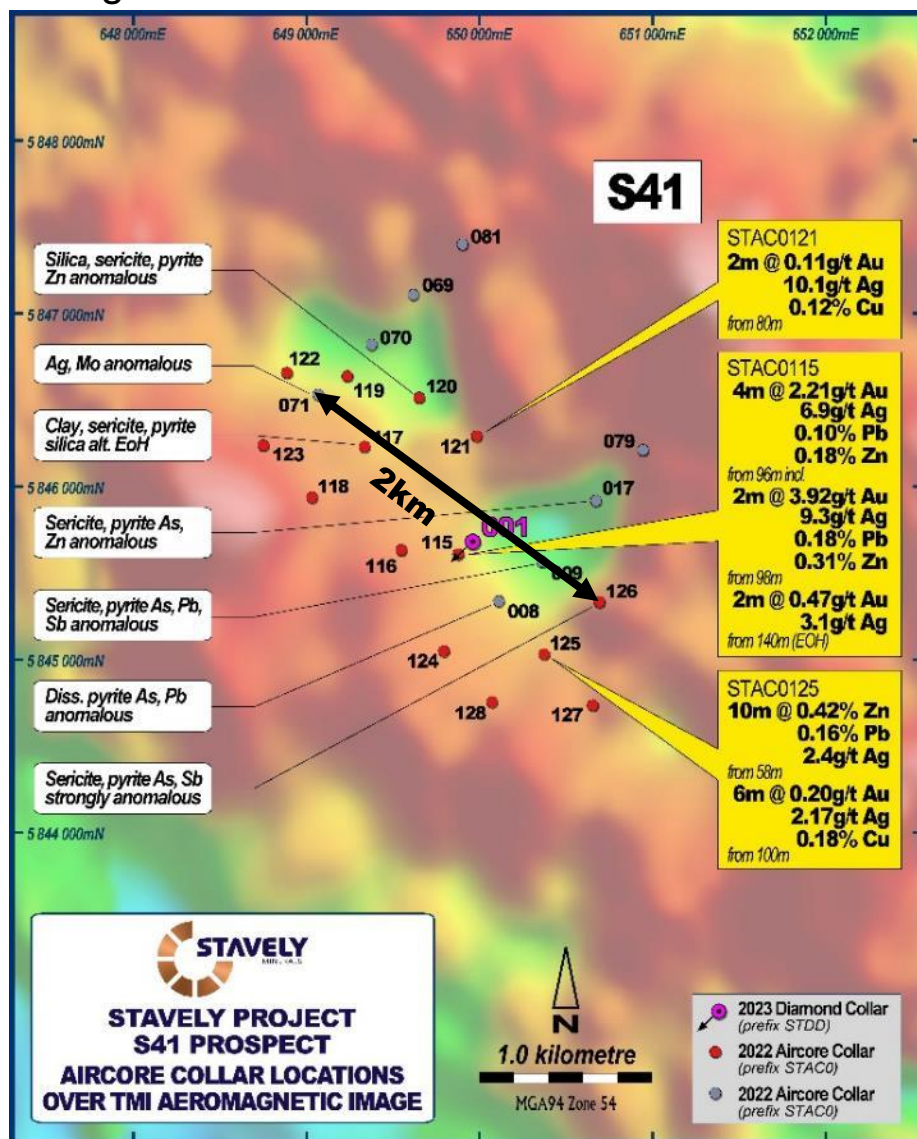


See ASX announcement 19/04/2023

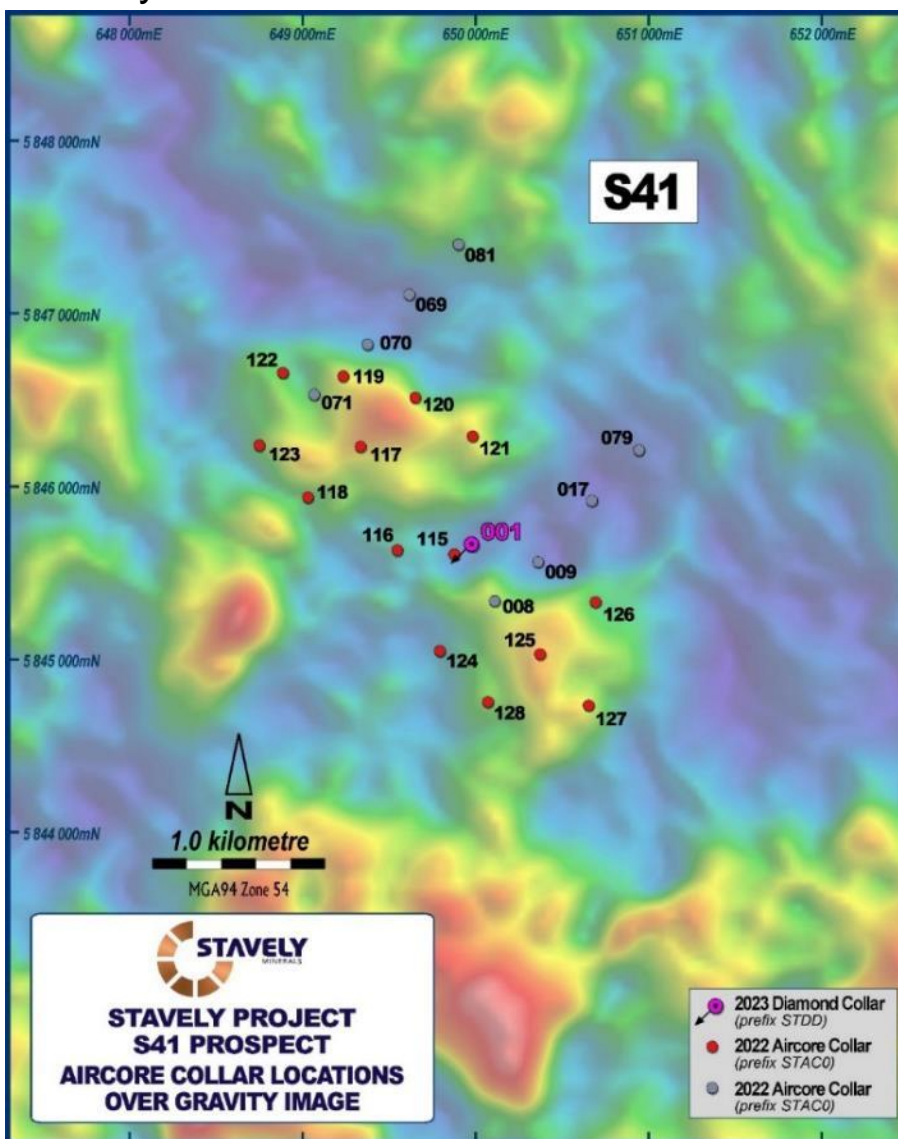
Emerging Discovery? – The S41 Breccia Prospect



Magnetics



Gravity

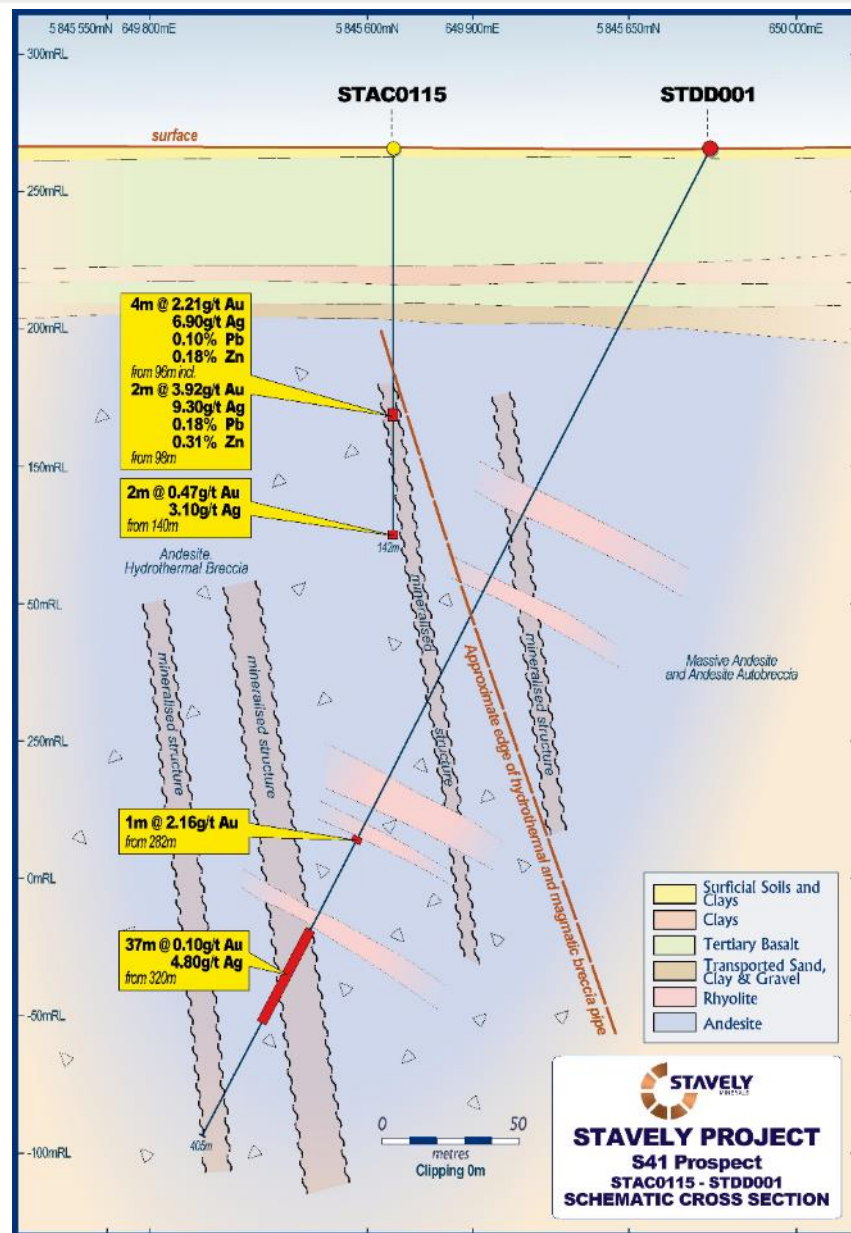


S41 Prospect Aircore

- **4m at 2.21g/t Au** from 96m drill depth, including:
- **2m at 3.92g/t Au** from 98m in aircore drilling
- Large 2km alteration zone
- Strongly anomalous base metals and pathfinder geochemistry

See ASX announcement 19/04/2023 and available from www.stavely.com.au

Emerging Discovery? – The S41 Breccia Prospect

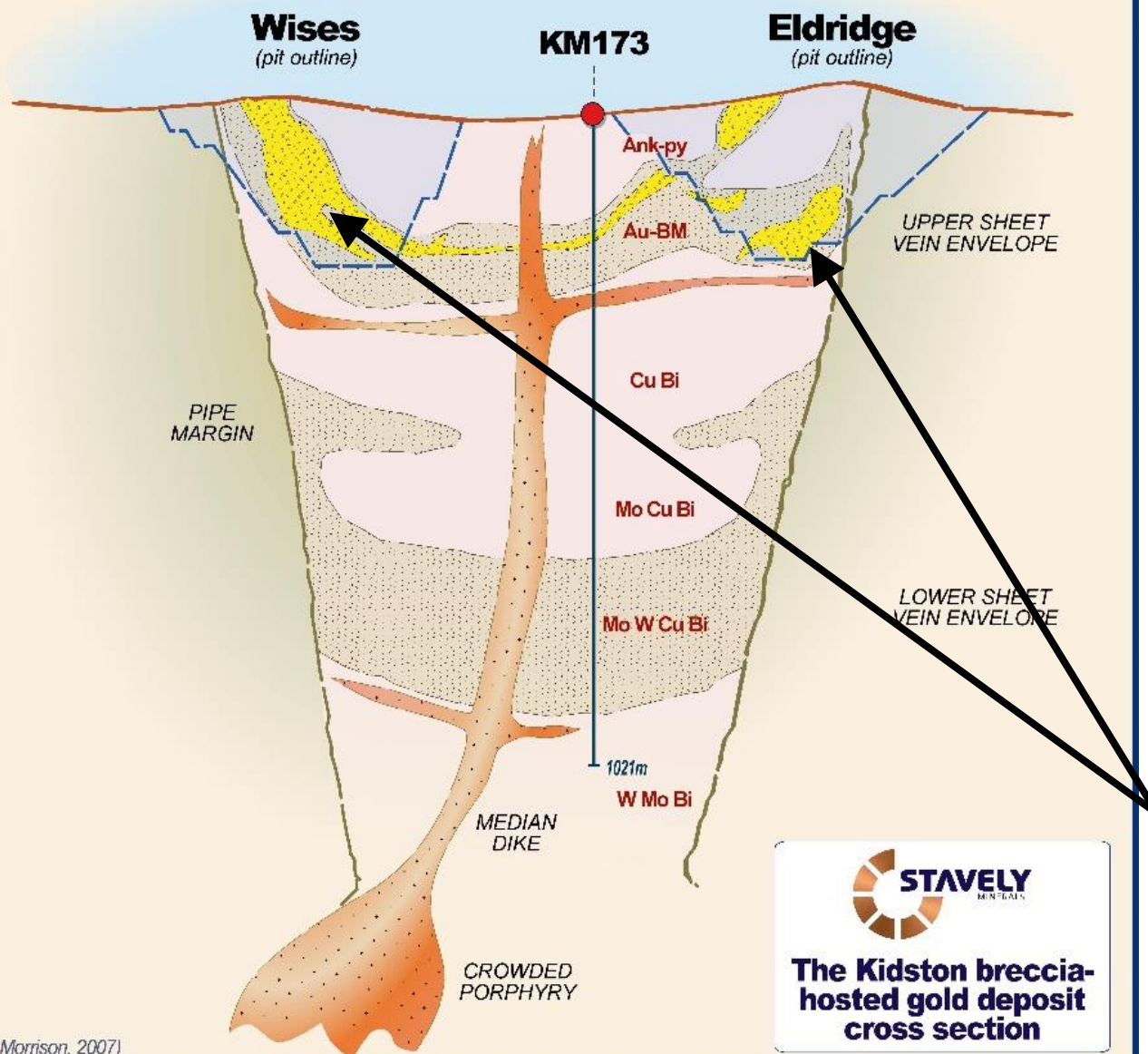


S41 Diamond Drill Hole

- Only one diamond drill hole in the 2,000m x 750m interpreted breccia system
- 1m at 2.16g/t Au** from 282m drill depth
- 37m at 0.10g/t Au**, including:
 - 2m at 0.56g/t Au** from 320m, and
 - 5m at 24.3g/t Ag** from 353m
- Importantly demonstrated that there is gold and silver in the system associated with Mn-carbonate and Zn & Pb base metals
- Breccia-hosted systems host notoriously inconsistent gold mineralization eg. Kidston
- Potential for scale

See ASX announcement 26/04/2023 and available from www.stavely.com.au

Emerging Discovery? – The S41 Breccia Prospect



S41 Diamond Drill Hole

- Only one diamond drill hole in the 2,000m x 750m interpreted breccia system
- **1m at 2.16g/t Au** from 282m drill depth
- **37m at 0.10g/t Au**, including:
 - **2m at 0.56g/t Au** from 320m, and
 - **5m at 24.3g/t Ag** from 353m
- Importantly demonstrated that there is gold and silver in the system associated with Mn-carbonate and Zn & Pb base metals
- Breccia-hosted systems host notoriously inconsistent gold mineralization eg. Kidston
- Potential for scale

See ASX announcement 26/04/2023 and available from www.stavelly.com.au



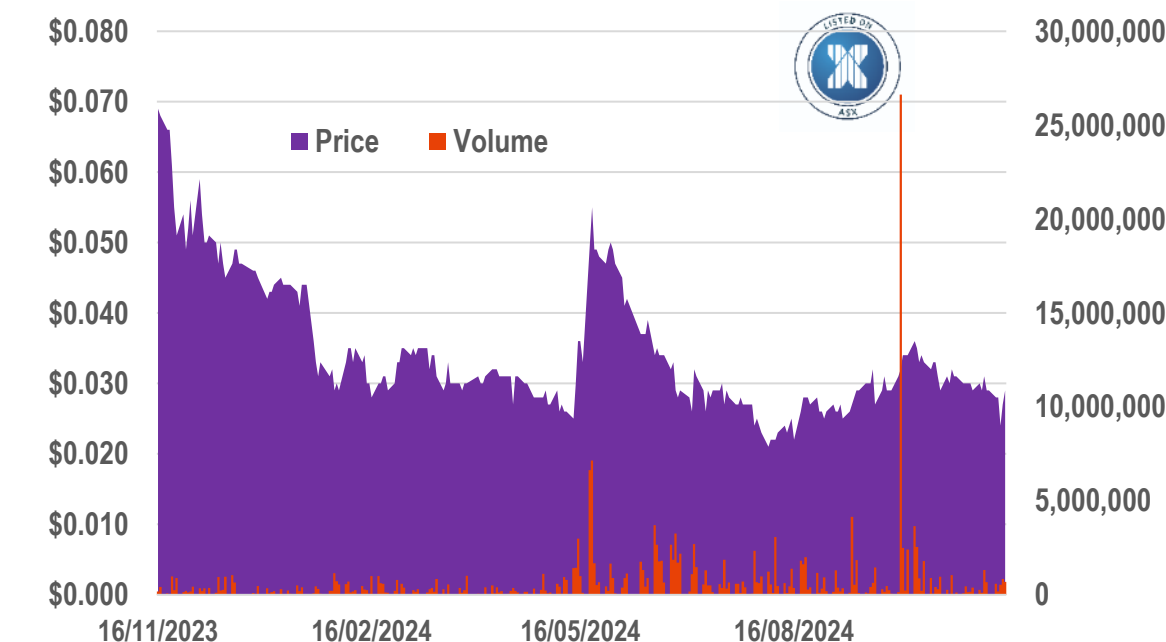
CAPITAL STRUCTURE

ASX Ticker	SVY
Share Price (20/11/24)	\$0.024
Shares on Issue	482M
Cash (30/09/24)	\$2.9M
Market Capitalisation	\$11.6M
Management and Staff	~10% equity

Directors

Chris Cairns	Executive Chair
Jennifer Murphy	Technical Director
Peter Ironside	Non-Executive Director
Amanda Sparks	Non-Executive Director & Company Secretary
Rob Dennis	Non-Executive Director

12-month Share Price to 20 November 2024



Summary – Key Investment Takeaways



- ✓ The Cayley Lode is a quality high-grade copper-gold-silver Mineral Resource from surface
- ✓ Junction copper (diamond drilling in-progress) and S41 gold discovery opportunities
- ✓ Hawkstone Ni-Cu-Co Project provides an outstanding opportunity for discovery in an emerging high-tenor magmatic nickel sulphide province with demonstrated fertility
- ✓ The gold discovery potential in the Ararat Project is excellent but not currently a focus for Stavely Minerals – we would welcome a JV partner for the gold rights
- ✓ BIG targets





Contact Us:
Stavely Minerals Limited
Level 1, 168 Stirling Highway
Nedlands WA 6009
www.stavely.com.au
info@stavely.com.au
Ph: 08 9287 7630

The information in this presentation is extracted from information available to view on www.stavely.com.au. The Company confirms that it is not aware of any new information or data that materially affects the information included in the original market announcement and, in the case of estimates of Mineral Resources or Ore Reserves, that all material assumptions and technical parameters underpinning the estimates in the relevant market announcement continue to apply and have not materially changed. The Company confirms that the form and context in which the Competent Person's findings are presented have not been materially modified from the original market announcement.



Appendix 1: Mineral Resources

Appendix 1: Mineral Resources Classifications



Table 1. Cayley Lode Initial Mineral Resource estimate

Resource Material	Resource Category	Cut-off	Tonnes (Mt)	Grade	Cont.	Grade	Cont.	Grade	Cont.
		(Cu %)		(Cu %)	Cu (Mlbs)	(Au g/t)	Au (oz)	(Ag g/t)	Ag (oz)
Primary Mineralisation (OP)	Indicated	0.2	5.87	1.04	134.4	0.23	43,407	7	1,321,074
	Inferred	0.2	1.7	1.3	49	0.2	10,931	9	491,907
Sub-Total Primary OP			7.6	1.1	183	0.2	54,338	7.4	1,808,158
Primary Mineralisation (UG)	Indicated	1.0	-	-	-	-	-	-	-
	Inferred	1.0	1.7	1.8	69	0.2	10,931	6	327,938
Sub-Total Primary UG			1.7	1.8	69	0.2	10,931	6	327,938
Total Cayley Lode			9.3	1.23	252	0.23	65,000	7.1	2,100,000



Table 4. Stavely Minerals Total Mineral Resources estimates

Resource Material	Resource Category	Cut-off	Tonnes (Mt)	Grade	Cont.	Grade	Cont.	Grade	Contained Metal	Grade	Cont.
		(Cu %)		(Cu %)	(Mlbs Cu)	(Au g/t)	(oz Au)	(Ag g/t)	(oz Ag)	(Zn %)	(kt Zn)
Total Resources	Indicated	1	21.5	0.61	288	0.1	67,301	3.1	2,153,972	0.3	8
	Inferred	1	6.8	1.2	175	0.1	32,797	4.7	1,043,839	0.2	16
Total Stavely Minerals			28.3	0.75*	463	0.11*	100,000	3.5	3,200,000	0.2	24



¹ reported in compliance with the JORC Code 2012, see ASX announcement 14 June 2022