

EUROLINE

Collection

Catalog and Specs 2025 - 2026


SPIRITS
CABINETRY

CARB2 CERTIFICATION



Spirits Cabinetry is proud to be a CARB2 Certified kitchen cabinet distributor. Our cabinets comply with the rules and regulations of composite wood products established by the California Code of Regulations, nationally implemented by the EPA.

SLIM COLLECTION

CYPRESS GREEN
XHC- CG



SLIM BLACK
XA7 - NB



SLIM OAK
XA7 - NO



SLIM WHITE
XA7 - NW

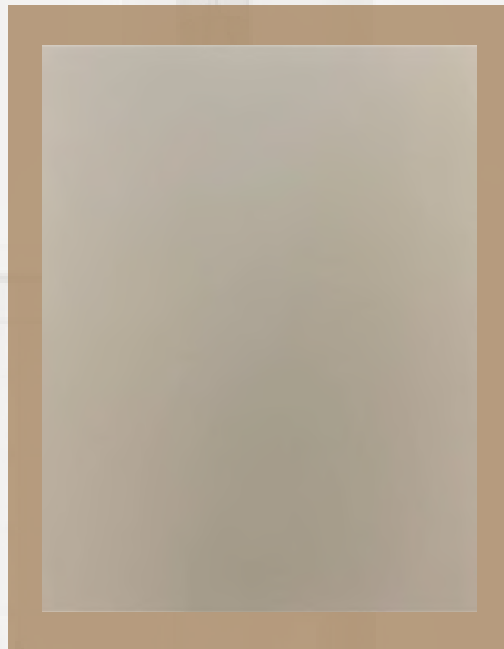


EUROPEAN COLLECTION

OXFORD WHITE
XHC - OW



ROMA CLAY
XHC - RC



PIANO GRAY
XHC - PG



COSMO SAND
XHC - CS



SLIM GREEN



SLIM BLACK



SLIM OAK



SLIM WHITE



OXFORD WHITE



ROMA CLAY



PIANO GRAY

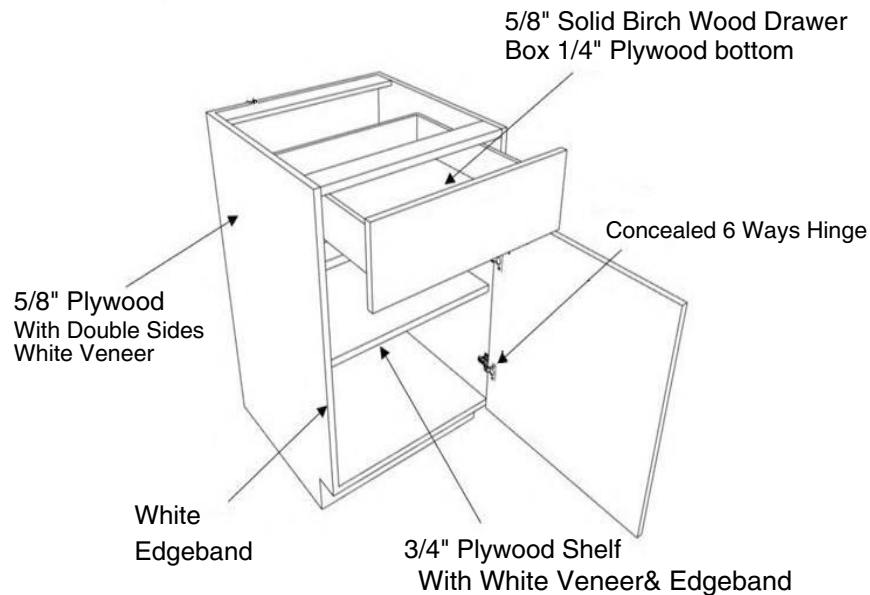


COSMO SAND



Cabinet Specifications

Frameless



Base Cabinets:

Overlay Doors and Drawer Fronts with 1/16" Revealed Soft Closing Hinges and Drawer Guides

Whole Carcass 3/4" Plywood Construction

Door&Drawer Face are made out of MDF With Veneer 24" Deep

Wall Cabinets:

Overlay Doors with 1/16" Revealed Soft Closing Hinges

Whole Carcass 3/4" Plywood Construction

Doors are made out of MDF With Veneer

Metal Drawer – DTC - (SLIM COLLECTION ONLY)

High-quality metal drawer system designed for smooth performance and modern aesthetics. Manufactured by DTC, this drawer offers *durability, soft-close functionality, and a **sleek, minimalist look*— ideal for frameless cabinet applications.

Key Features

- Full-extension soft-close slides
- Durable metal construction
- Pre-assembled system for easy installation
- Modern design compatible with contemporary kitchens and bathrooms
- Available in various heights (H11, H12, H13, H14)



Cabinet Specifications

Face Framed

- Full overlay panel, 3/4 inch solid wood
- 6-way adjustable European-style hinge with soft-close feature
- Shelving is 3/4 inch thick cabinet-grade plywood with front edge banding
- Dovetail drawers with solid wood on all sides, full extension
- Concealed under-mount full extension drawer glides with soft-close feature
- 1/2 inch cabinet-grade plywood box, UV coated natural plywood on interior
- Bracket reinforcements for base cabinet
- Double-doweled face frame joint
- Hardwood face frame
- Door bumpers

"L" Bracket reinforced base cabinets with 1/2" thick plywood for heavy counters.

Full extension, under-mounted, soft-close steel concealed drawer glides.

3/4 inch thick stretchers applied to the back of the cabinets.

Adjustable 3/4 inch depth metal shelf rest.

1/2 inch thick cabinet-grade plywood.

Clear-coat UV finish throughout

4 1/2 inch toe kick

5-Piece wood door fronts

Simple removable drawers for easy cleaning

Ask your Sales Consultant about our latest accessories

Dovetail drawers with 1/2 inch thick solid wood sides

3/4 inch thick full overlay of birch wood door style

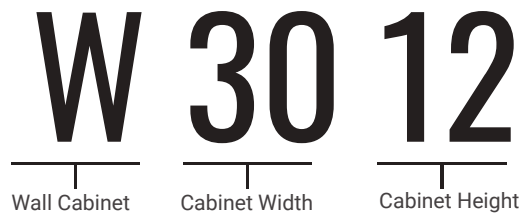
Six-way adjustable European hidden metal hinges



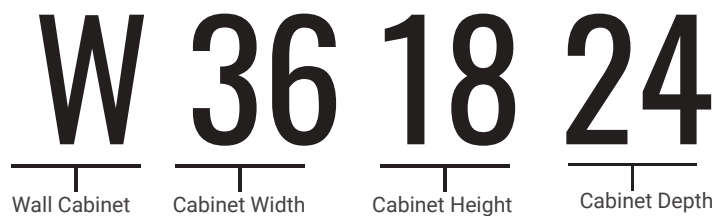
WALL CABINETS

CABINET IDENTIFICATION

The letter(s) represent the type of cabinet, the first set of numbers represents the width of the cabinet, and the second set of numbers represents the height of the cabinet.



Whenever a cabinet is shorter or deeper than the standard 12" for wall cabinets, it is represented by a third set of numbers.



ORDER CODING

All wall cabinet order coding begins with the door order code

SPECIAL NOTES

- Wall cabinetry is 12" deep less otherwise noted
- Single door wall cabinetry is hinged on the right side of the face frame but can be flipped as necessary
- Glass door upon request



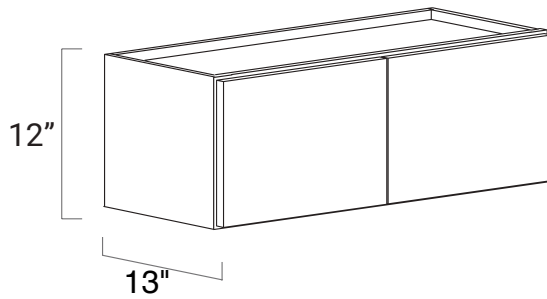
Look for the alert sign for special sizes!



Look for the light bulb for helpful design tips!



WALL CABINETS



Wall Bridge Double Door 12" High

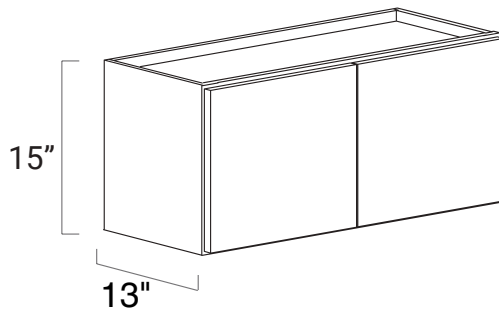
Order Code:

W3012

W3312

W3612

• No shelf



Wall Bridge Double Door 15" High

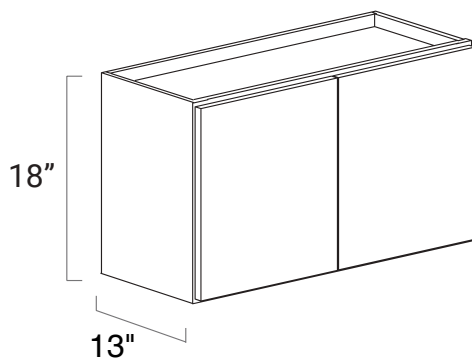
Order Code:

W3015

W3315

W3615

• No shelf



Wall Bridge Double Door 18" High

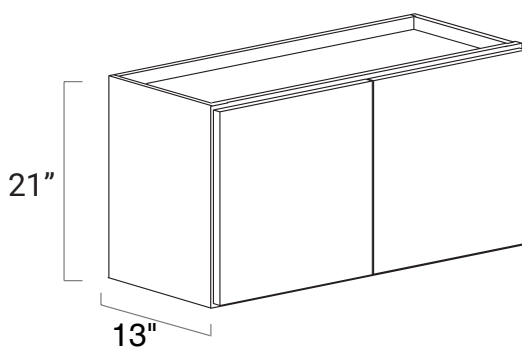
Order Code:

W3018

W3318

W3618

• No shelf



Wall Bridge Double Door 21" High

Order Code:

W3021

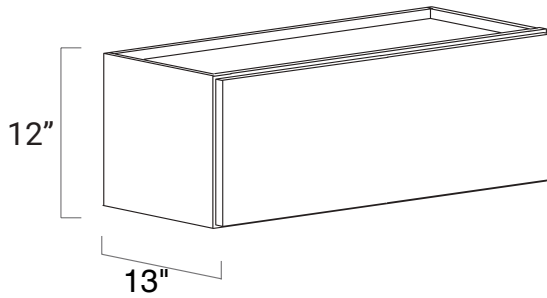
W3321

W3621

• No shelf



WALL CABINETS



LIFT UP Wall Bridge One Door 12" High

Order Code:

W2412

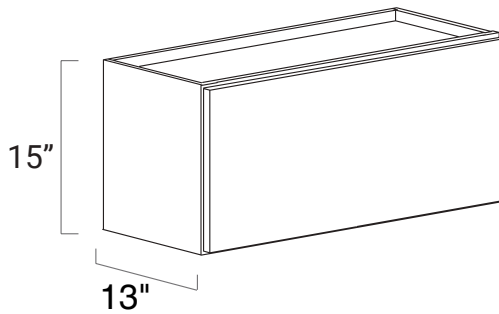
W2712

W3012

W3312

W3612

• No shelf



LIFT UP Wall Bridge One Door 15" High

Order Code:

W2415

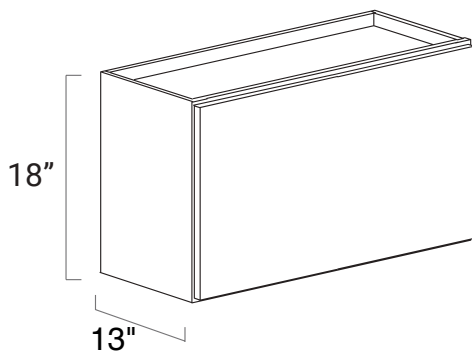
W2715

W3015

W3315

W3615

• No shelf



LIFT UP Wall Bridge One Door 18" High

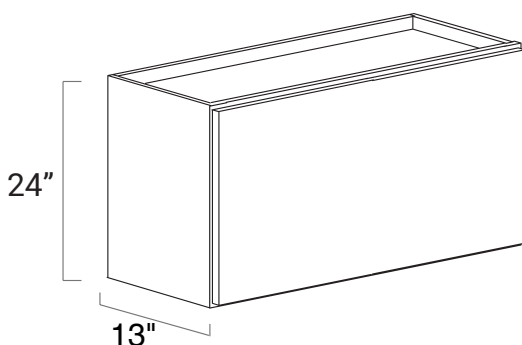
Order Code :

W3018

W3318

W3618

• No shelf



LIFT UP Wall Bridge One Door 24" High

Order Code:

W3024

W3324

W3624

• No shelf



WALL CABINETS

30" Wall Bridge Cabinet Double Door 24" Deep

Order Code:

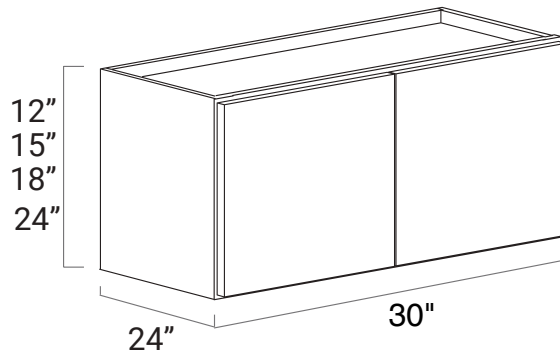
W301224

W301524

W301824

W302424

- Can be used as Refrigerator Cabinet
- Can be used as Farmer Sink Base



33" Wall Bridge Cabinet Double Door 24" Deep

Order Code:

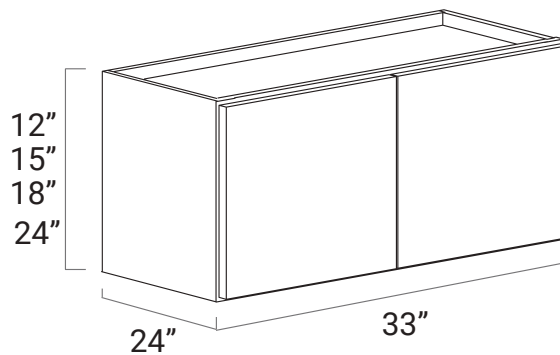
W331224

W331524

W331824

W332124

- Can be used as Refrigerator Cabinet
- Can be used as Farmer Sink Base



36" Wall Bridge Cabinet Double Door 24" Deep

Order Code:

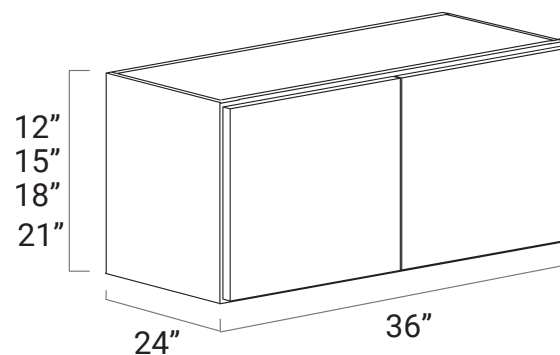
W361224

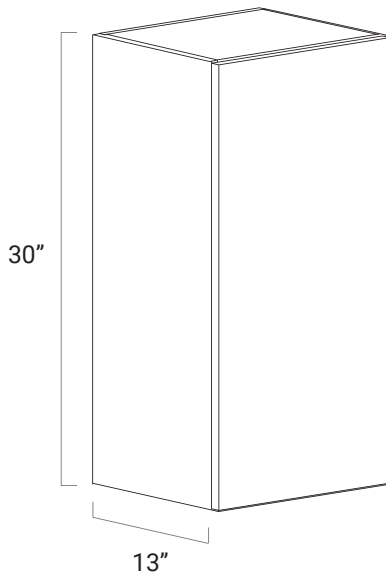
W361524

W361824

W362124

- Can be used as Refrigerator Cabinet
- Can be used as Farmer Sink Base





Wall Single Door 30" High

Order Code:

W0930

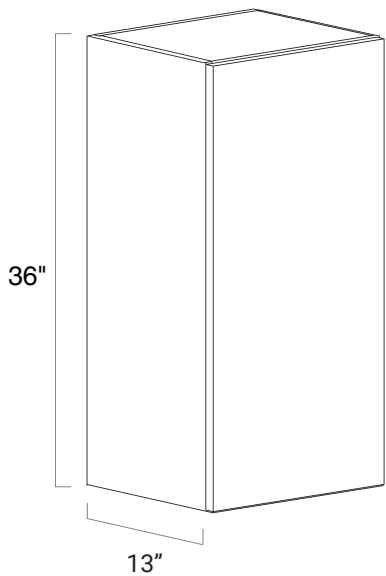
W1230

W1530

W1830

W2130

- Two adjustable shelves



Wall Single Door 36" High

Order Code:

W0936

W1236

W1536

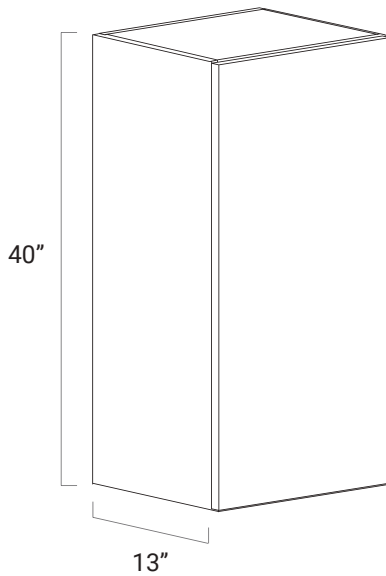
W1836

W2136

- Two adjustable shelves

NOTES





Wall Single Door 40" High



Order Code:

W0940

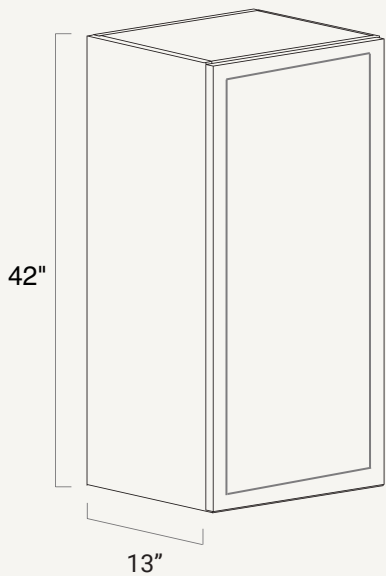
W1240

W1540

W1840

W2140

- Two adjustable shelves
- Available only in European Style



Wall Single Door 42" High

Order Code:

W0942

W1242

W1542

W1842

W2142

- Two adjustable shelves
- Available only in Slim Style

NOTES



WALL CABINETS

Wall Double Door 30" High

Order Code:

W2430

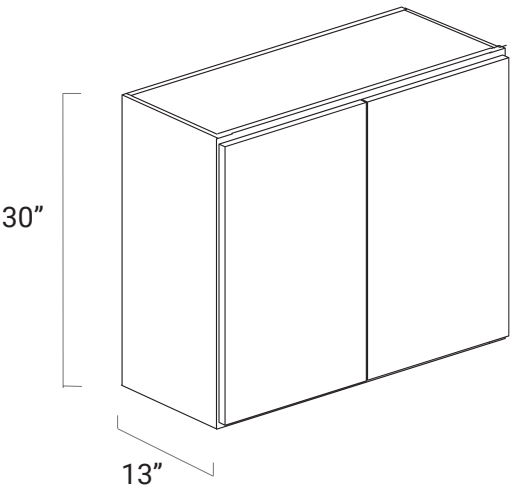
W2730

W3030

W3330

W3630

- Two adjustable shelves



Wall Double Door 36 " High

Order Code:

W2436

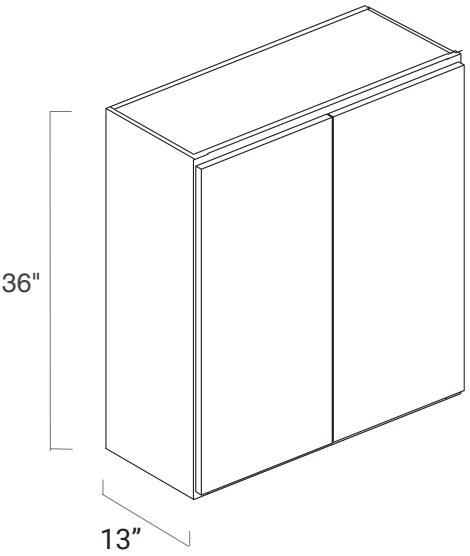
W2736

W3036

W3336

W3636

- Two adjustable shelves



NOTES



WALL CABINETS

Wall Double Door 40" High



Order Code:

W2440

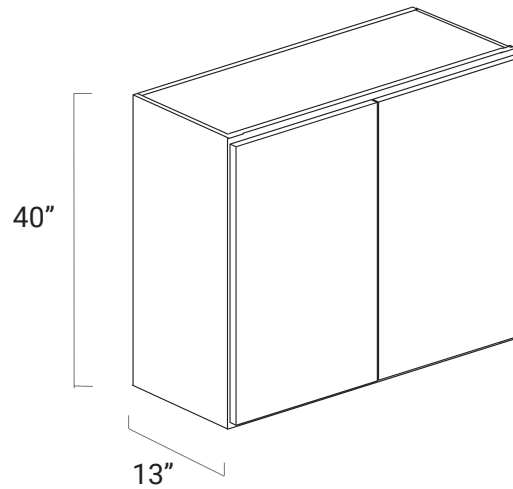
W2740

W3040

W3340

W3640

- Two adjustable shelves
- Available only in European Style



Wall Double Door 42 " High

Order Code:

W2442

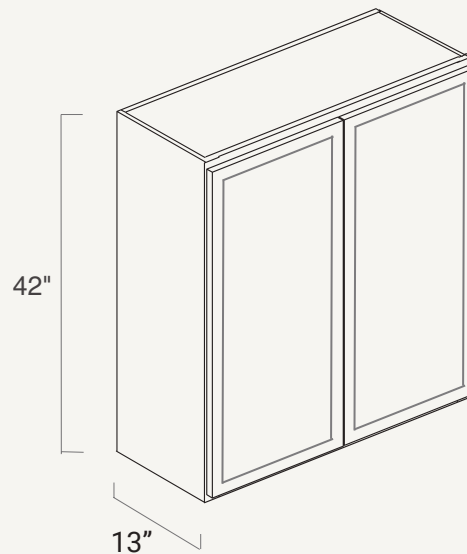
W2742

W3042

W3342

W3642

- Two adjustable shelves
- Available only in Slim Style



NOTES

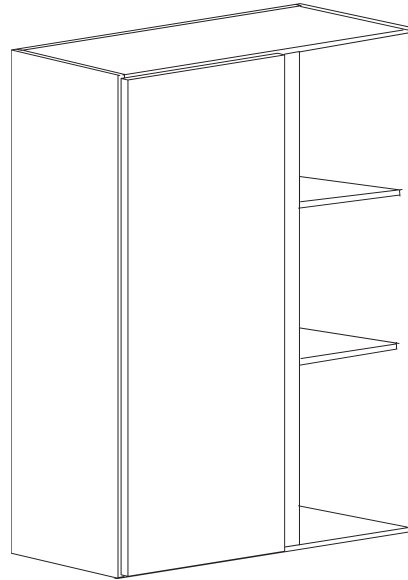


WALL CABINETS

Wall Blind Corner

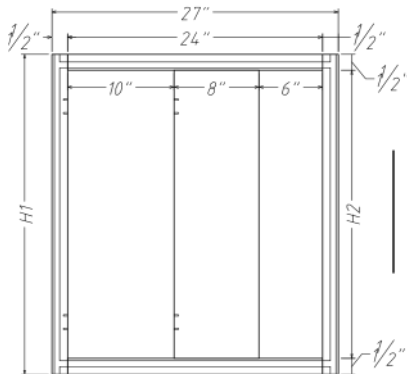
Order Code: **WBC2730**
WBC2736
WBC2740 ⚠
WBC2742

- 27" wide
- Two adjustable shelves
- Must be pulled 1" from the adjacent wall for a total of 28" wide
- 3" wall filler included
- Cabinet can be flipped for left/right application
- Hinges are located on center stile of the face

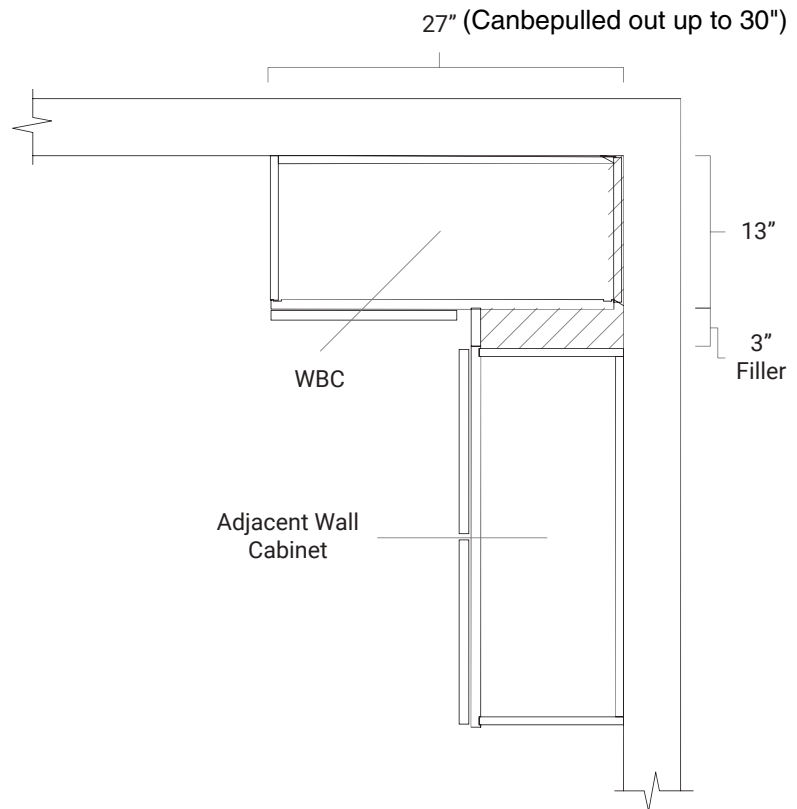


frame and can be flipped as necessary

FACE FRAME
OPENING DIMENSIONS

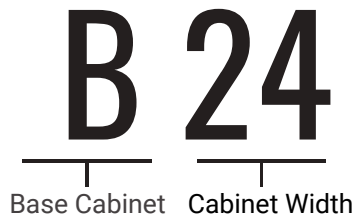


INSTALLATION DIAGRAM

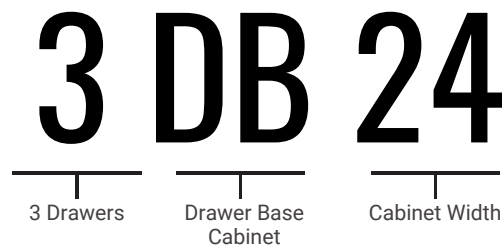


CABINET IDENTIFICATION

The letter(s) represent the name of the cabinet, and the following set of numbers represents the width of the cabinet.



Whenever a base cabinet has all drawers and no doors, also known as a drawer base, the cabinet code will start with a number. This represents the number of drawers the cabinet has.



ORDER CODING

All base cabinet order coding begins with the door order code

SPECIAL NOTES

- Base cabinetry is 24" deep less otherwise noted
- Single and bi-fold door base cabinetry is hinged on the right side of the face frame but can be flipped as necessary



Look for the alert sign for special sizes!



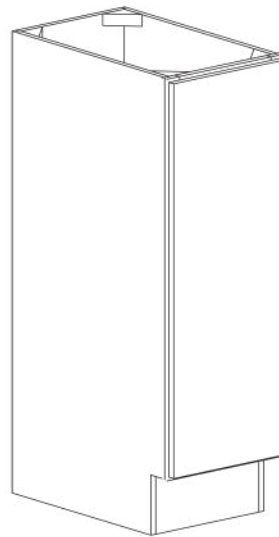
Look for the light bulb for helpful design tips!



BASE CABINETS

Base Full Height Door

Order Code: **BT6**
BT9

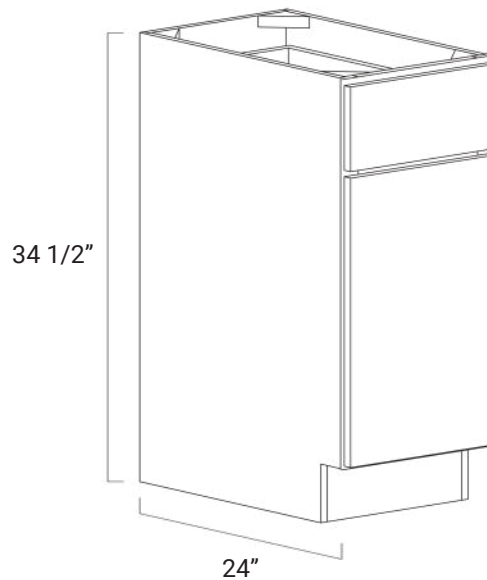


The BT6/BT9 is a great cabinet to use for storing trays, baking sheets, and cutting boards.

Base Single Door

Order Code: **B12**
B15
B18
B21

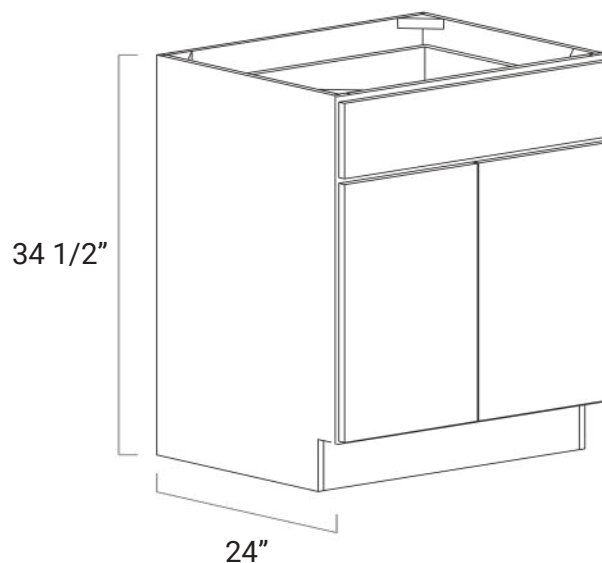
- One adjustable shelf



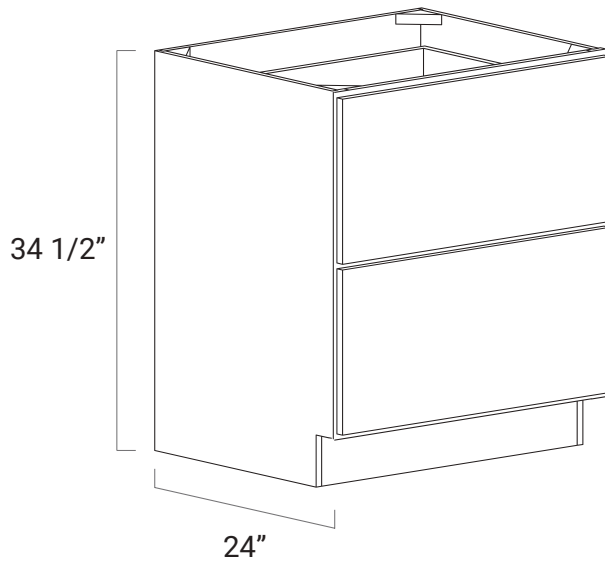
Base Double Door

Order Code: **B24**
B27
B30
B33
B36
B39
B42

- One adjustable shelf



BASE CABINETS



Two Drawer Base

Order Code: **2DB24**
2DB27
2DB30
2DB36

- Two deep drawers
- Heavy load-bearing, full extension glides
- Rated for 100 lbs.

Great for storing pots and pans near a cooking station.



Three Drawer Base

OrderCode: • **3DB12** • **3DB27**
• **3DB15** • **3DB30**
• **3DB18** • **3DB33 - SLIM ONLY**
• **3DB21** • **3DB36 - SLIM ONLY**
• **3DB24**

- Three deep drawers
- Top drawer aligns with standard base cabinetry

Wider drawer bases are great for storing utensils, pots, and pans near a cooking station.



Base Spice Rack

Order Code: **BSPR09**
BSPR12

- Pre-assembled • 5-piece front
- Full extension glides without soft close
- Hardwood interior
- 20 5/8" shelf depth
- Requires decorative hardware to pull open
- Can hold a variety of spice container sizes



BASE CABINETS

Sink Base

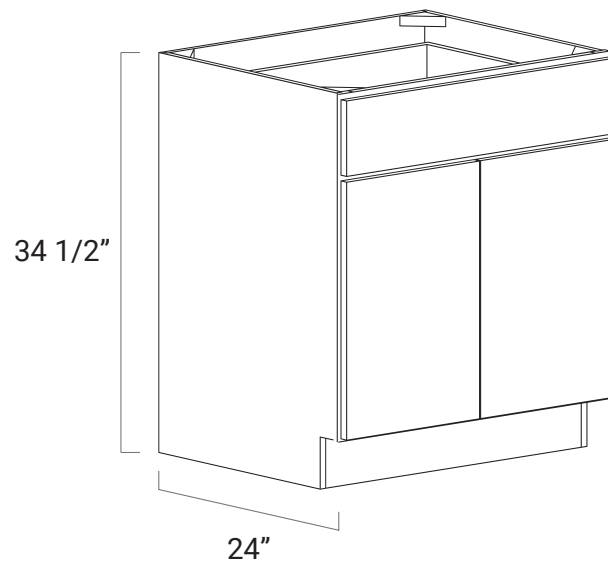
Order Code: SB30

SB33

SB36

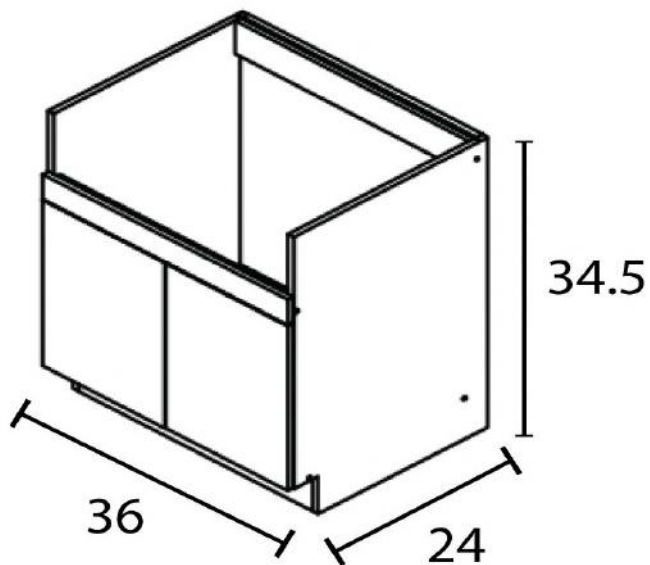
SB42

- False drawer front



Farmer Sink Base

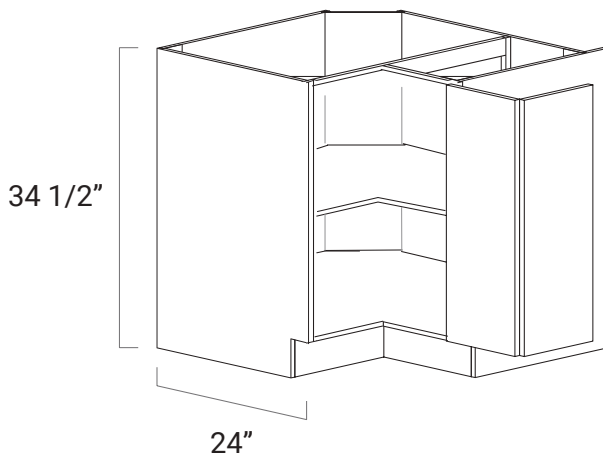
Order Code: **FSB36**



BASE CABINETS

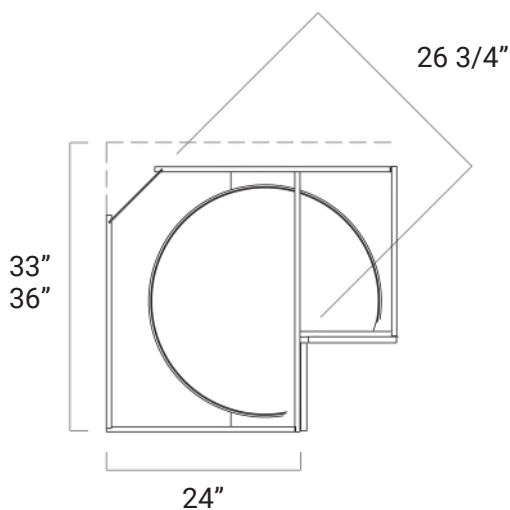
Lazy Susan*

OrderCode: **LSB33**
LSB36



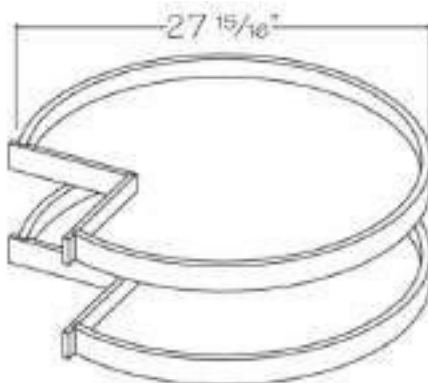
- Full shelf
- Full height, bi-folding door
- Soft close not available
- Magnetic door catch attached
- Designed to prevent warpage

TOP VIEW



- * Wooden tray are not included, need to be purchased seperately.

When positioning against an appliance, such as a range or refrigerator, place the hinge on the opposite side of the appliance. This allows the door to open past 90 degrees for maximum cabinet access.



Order Code: **TB33-36**

- * Wooden tray is sold by piece, not set of 2

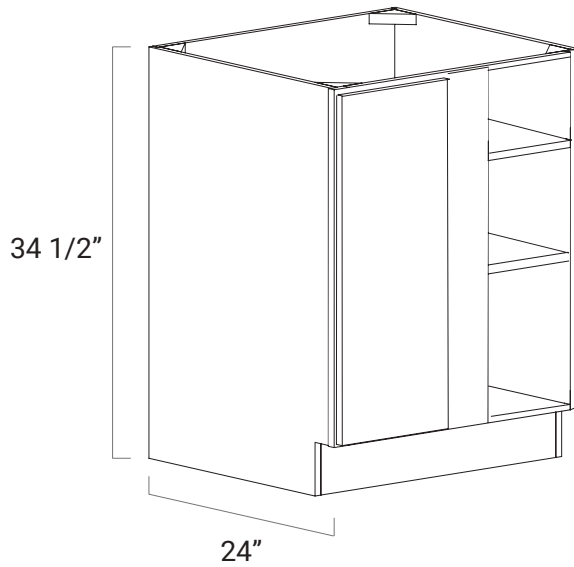
- Natural Wood Finish
- Rotating, pie-cut trays
- Trays are made of wood veneered plywood with a solid wood perimeter lip
- Undermount bearings allow for indepedent rotation and full access to trays



NOTES

[illegible]

BASE CABINETS

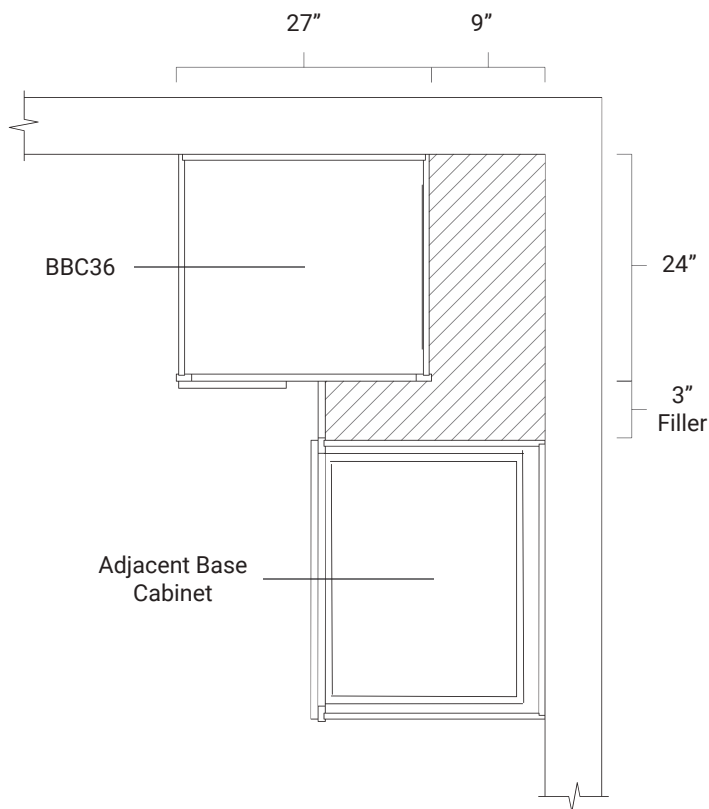


Base Blind Corner

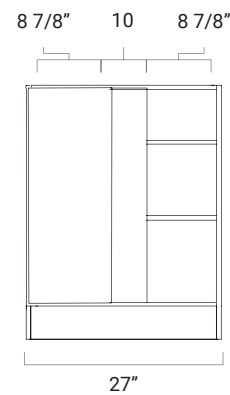
Order Code: **BBC36-39**

- One adjustable shelf
- Door and drawer can be flipped for left or right application
- Hinges are located on the center stile of the face frame and can be flipped as necessary
- Same size door, drawer, and door opening as **BT9**.

INSTALLATION DIAGRAM (BBC39 SHOWN)



FACE FRAME OPENING DIMENSIONS

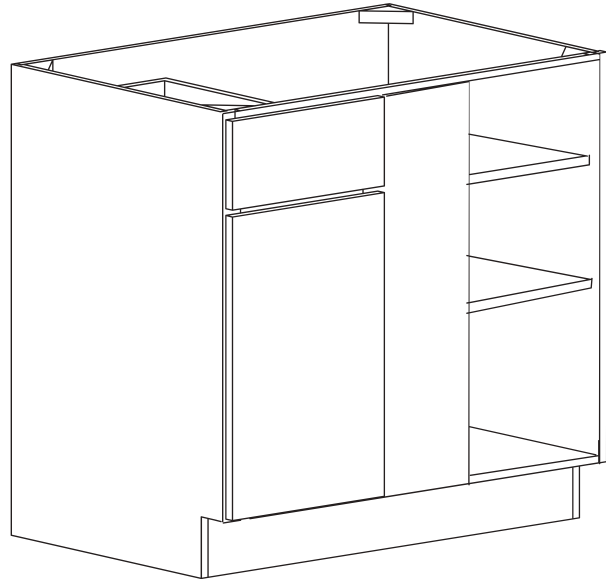


BASE CABINETS

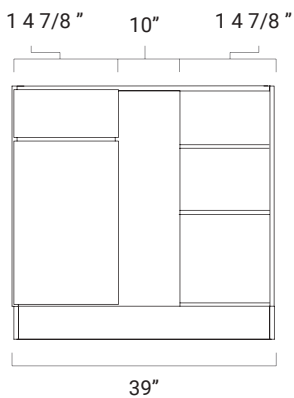
Base Blind Corner

Order Code: **BBC42-45**

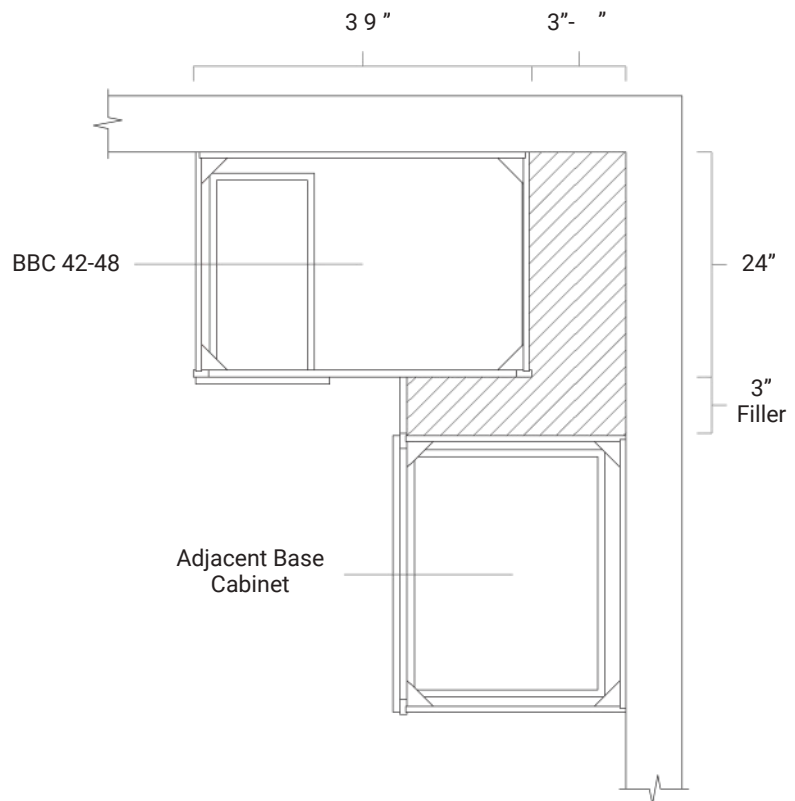
- One adjustable shelf
- Cabinet is 39" wide and must be pulled a minimum of 3" or a maximum of 9" from adjacent wall
- Door and drawer can be flipped for left or right application
- Hinges are located on the center stile of the face frame and can be flipped as necessary
- Same size door, drawer, and opening as B15



FACE FRAME
OPENING DIMENSIONS



INSTALLATION DIAGRAM

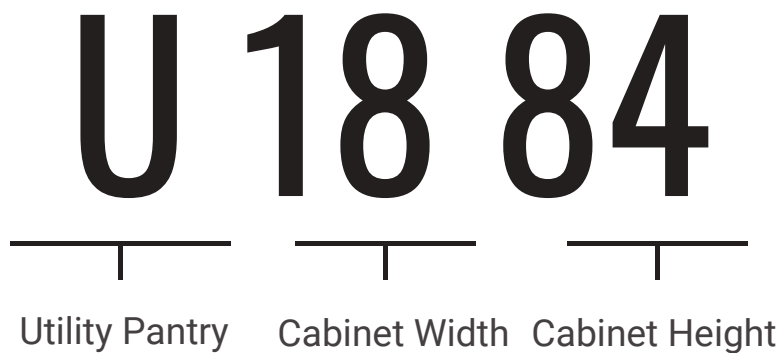


*Can be pulled a minimum of 42" to a maximum of 48"
We suggest to pull only up to 45" Minimum and
maximum pull includes cabinet width*



CABINET IDENTIFICATION

The letter or letters represent the type of cabinet, the first set of numbers represent the width of the cabinet, and the second set of numbers represents the height of the cabinet.



ORDER CODING

All tall cabinet order coding begins with door order code.

SPECIAL NOTE

- Tall cabinets are 24" deep height of bottom portion is fixed at 54"

*Our tall pantry is divided into BOTTOM & UPPER two portions,



TALL CABINETS

Utility Pantry

Single Door

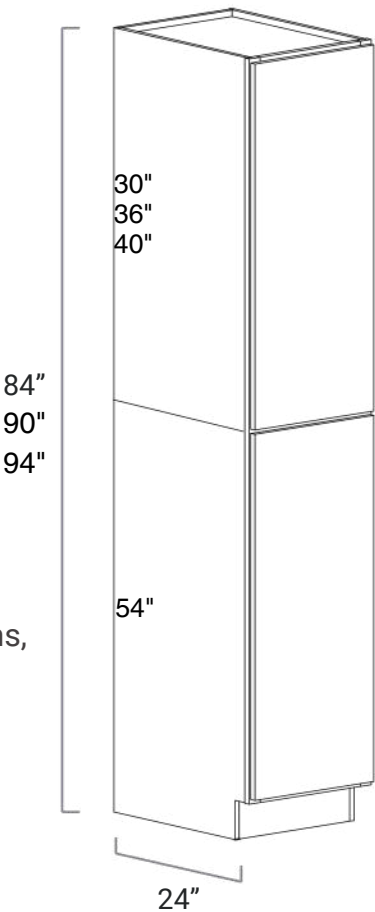
Order Code: **PC1884 (PC1854B + PC1830T)**

PC1890 (PC1854B+ PC1836T)

PC1894 (PC1854B+PC1840T)

- Accepts 18” rollout trays (**RS18** pg. 54)
(ordered separately)
- Apply the SCR or BAM or USV2496 to cover the seam.

***** Our tall pantry is divided into LOWER & UPPER two portions, height of bottom portion is fixed at 54"



SKU	UPPER HEIGHTS	# OF SHELVES IN UPPER	# OF SHELVES IN LOWER
PC1884	30"	TWO	THREE
PC1890	36"	TWO	THREE
PC1894	40"	TWO	THREE

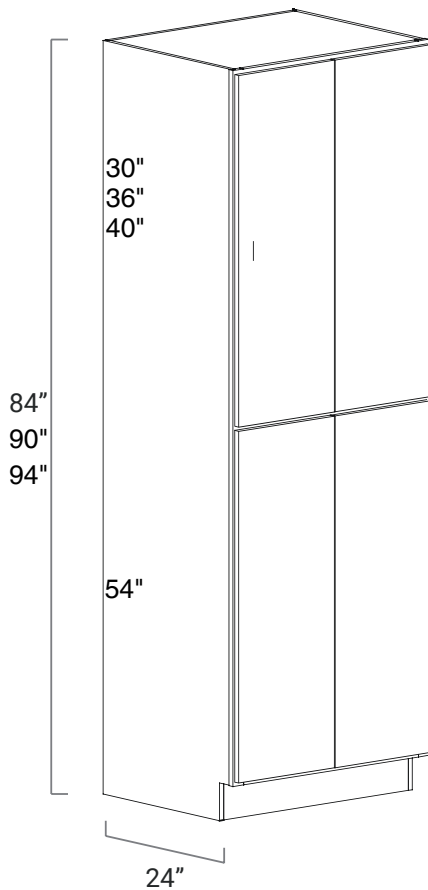


NOTES*

•By Stacking different upper portion of pantry, you can creat a pantry with unusal heights



TALL CABINETS



Utility Pantry Double Door

Order Code: **PC2484(PC2454B + PC2430T)**
PC2490(PC2454 B + U2436T)
PC2494(PC2454 B + U2440T)
PC3084(PC3054 B + PC3030T)
PC3090(PC3054 B + PC3036T)
PC3094(PC3054 B + PC3040T)

- 24" wide pantries accept 24" rollout trays (**ROT24**)
- 30" wide pantries accept 30" rollout trays (**ROT30**)
- Apply the SCR or BAM or USV2496 to cover the seam.

*Our tall pantry is divided into LOWER & UPPER two portions, height of bottom portion is fixed at 54"

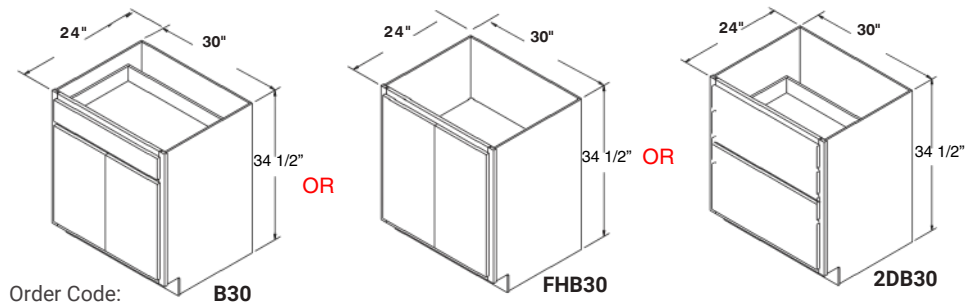
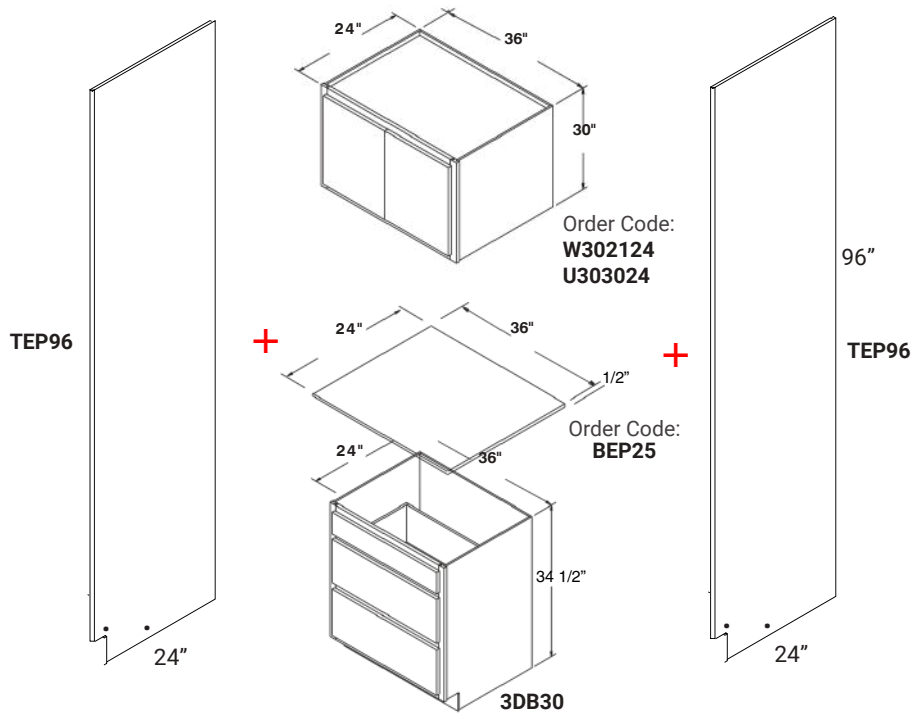
SKU	UPPER HEIGHTS	# OF SHELVES IN UPPER	# OF SHELVES IN LOWER
PC2484	30"	TWO	THREE
PC2490	36"	TWO	THREE
PC2494	40"	TWO	THREE
PC3084	30"	TWO	THREE
PC3090	36"	TWO	THREE
PC3094	40"	TWO	THREE

*NOTES

•By Stacking different upper portion of pantry, you can creat a pantry with unusal heights



31.5" Stacked Oven Pantry



Order Code:

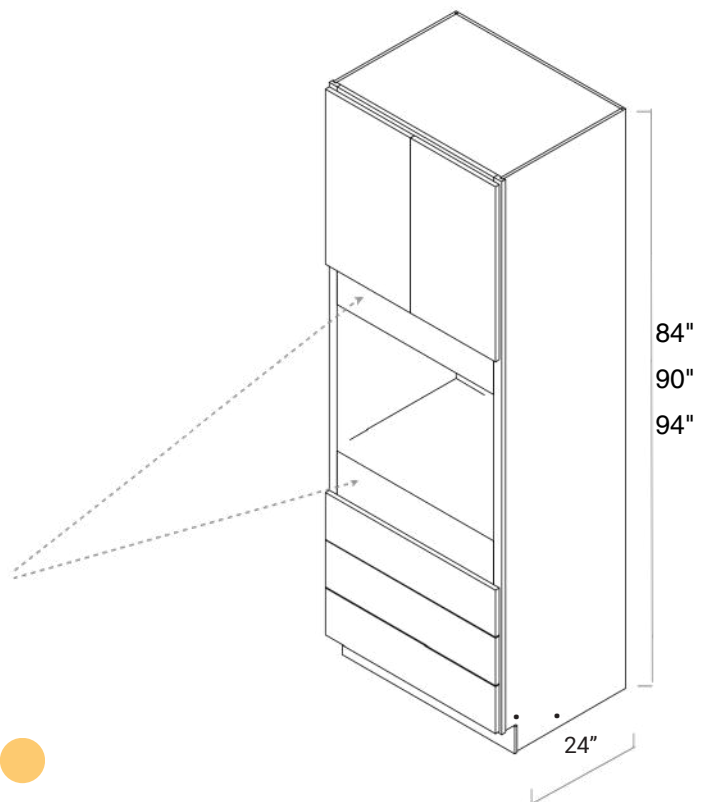
OVD3084 (OVD3072B + OVD3012T)

OVD3090 (OVD3072B + OVD3018T)

OVD3094 (OVD3072B + OVD3022T)

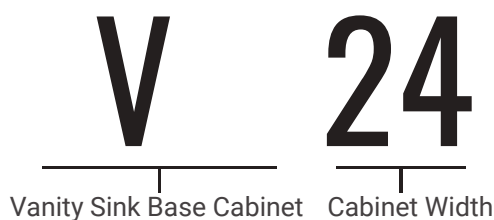


* Filler will be needed for better looking

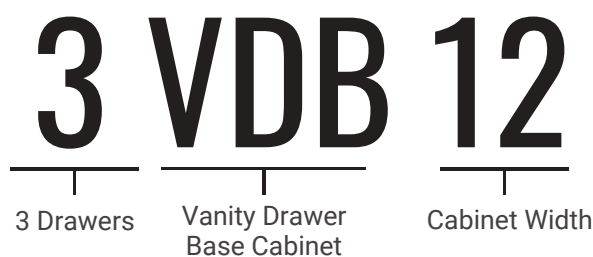


CABINET IDENTIFICATION

The letter or letters represent the name of the cabinet, and the following set of numbers represents the width of the cabinet.



Whenever a bath cabinet has all drawers and no doors, also known as a drawer base, the cabinet coding will start with a number. This represents the number of drawers the cabinet has.



ORDER CODING

All bath cabinet order coding begins with the door order code.

SPECIAL NOTES

* Bath cabinetry is 34 1/2" high and 21" deep

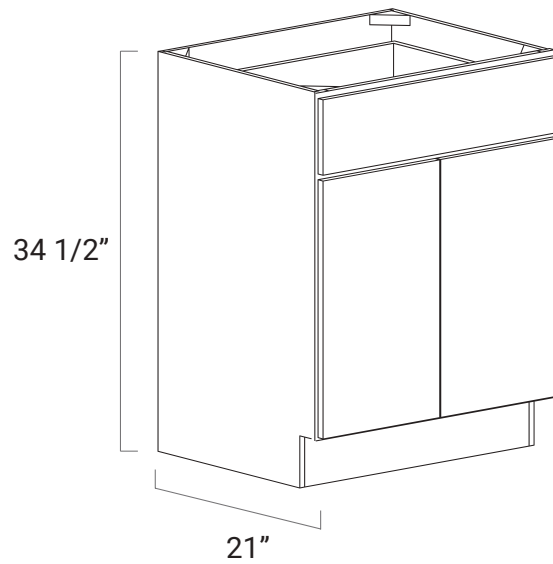


BATH CABINETS

Vanity Sink Base with 2doors

Order Code: **V24**
V30
V36

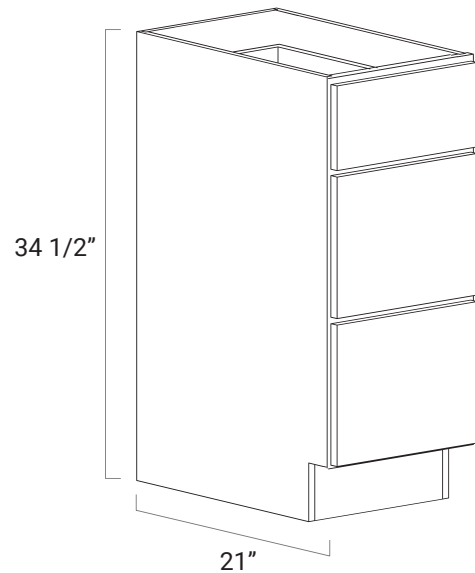
- No shelf
- For single bowl installation only
- Two doors
- Top drawer is a false door front



Vanity Drawer Base Three Drawer

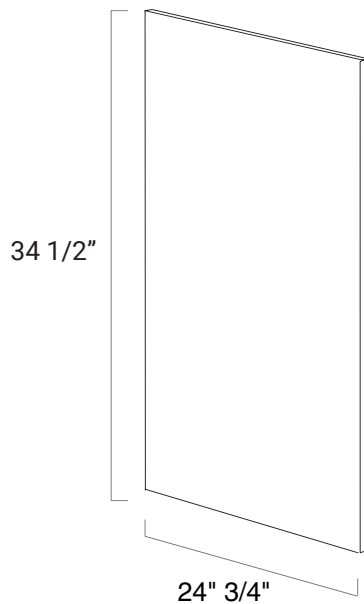
Order Code: **3VDB12**
3VDB15
3VDB18
3VDB24

- Two deep drawers
- Top drawer aligns with standard base cabinetry



ORDER CODING

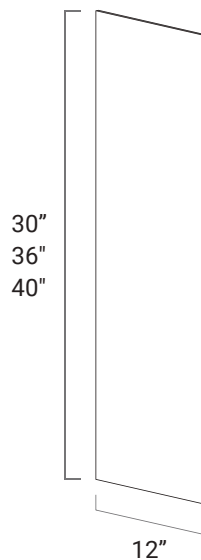
All panel and skin order coding begins with door order code.



Base End Panel

Order Code: **BDP**

- 3/4" thick, veneered plywood panel, finished on both sides
- Can be used as Dishwasher End Panel
- Can be trimmed down to accommodate the wall



Wall End Panel

Order Code: **WFP1230**

WFP1236

WFP1240

- 1/4" thick • One finished side • Intended for skinning sides of wall cabinetry
- Cut width and height to fit
- Used to make sure side of cabinet is flush with frame



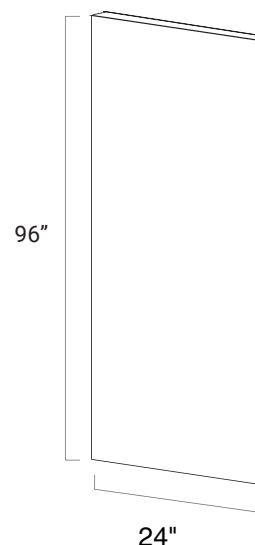
PANELS AND SKINS

(*) For stained finish, construction is either veneered plywood or MDF core. For painted finish, construction is MDF core.

Tall End Panel

Order Code: **RR96**

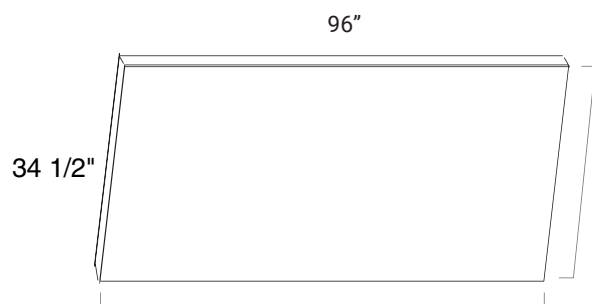
- 3/4" thick • Both sides finished, and edge banned
- Intended for skinning exposed backs of peninsulas, islands, and other design applications



Refrigerator panels can be cut to fit in the field and used as a shelving solution for many design situations.

Island Panel

Order Code: **PNL**



- 5/8" thick, both sides finished, and edge banned



ORDER CODING

All molding and trim order coding begins with door order code.

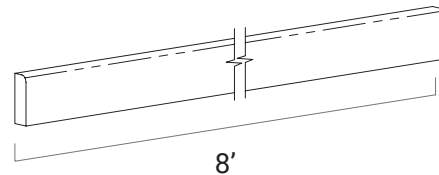
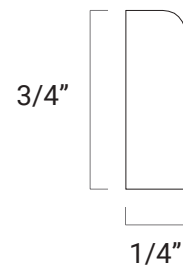
MOLDING CONSTRUCTION KEY

Solid wood

Scribe Molding

Order Code: **SM8**

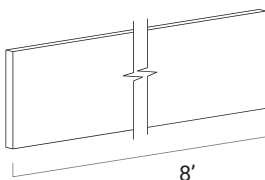
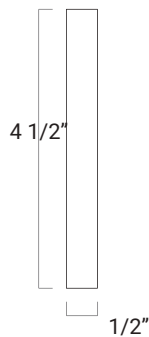
- Solid wood
- Molding comes in a single 8' piece



Toe Kick

Order Code: **TK8**

- 1/2" thick, veneered plywood •
- Molding comes in a single 8' piece

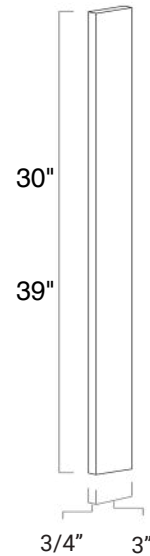


MOLDING AND TRIM

3" Wall Filler

Order Code: **WF342**

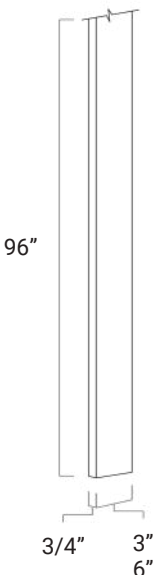
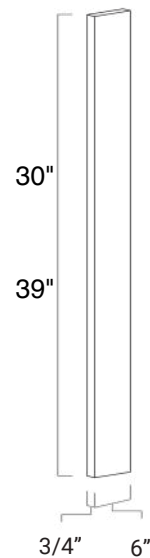
- Solid wood
- Also used as wall and tall filler
- Finished on all sides



6" Wall Filler

Order Code: **WF642**

- 3/4" thick solid wood
- Finished front, and sides
- Cut width/height to fit as necessary



Tall Filler

OrderCode: **TF396**
TF696

- 3/4" thick solid wood
- Finished front and sides
- Cut width/height to fit as necessary
- Must be used with full overlay door to prevent doors and hardware from binding on adjacent walls, deeper adjacent cabinetry, or corner applications

*Can be used as starter molding to
build crown to the ceiling.*



NOTES

[illegible]

Roll outs

ORDER CODING

Example: **ROT 30**

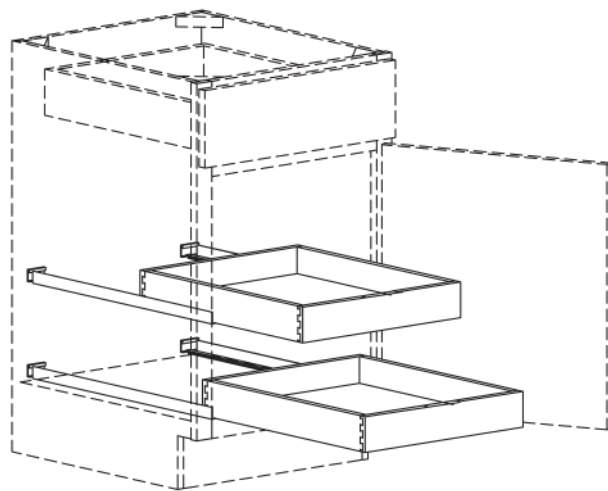
SPECIAL NOTE

- Sold separately from cabinets

Roll Out Tray

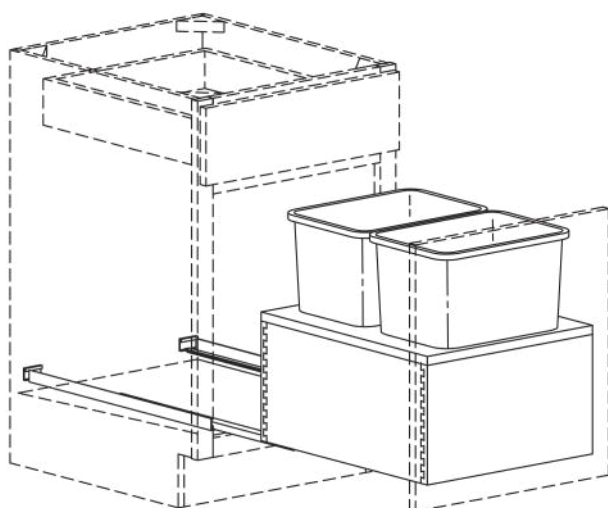
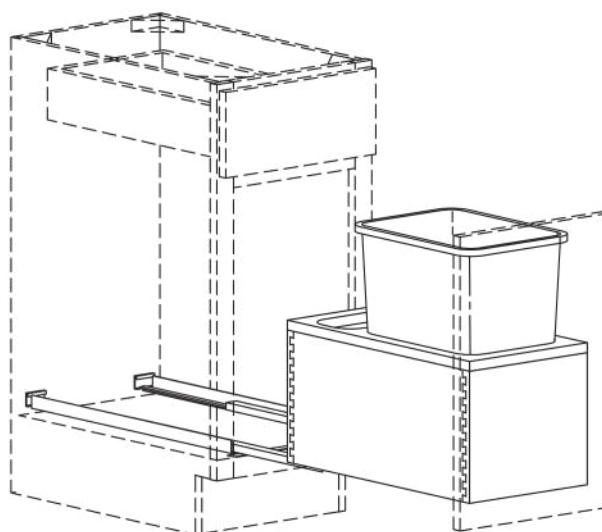
OrderCode: **ROT18** **ROT24**
 ROT21 **ROT30**
 ROT27 **ROT36**
 ROT33

- Solid wood, dovetail construction
- 2 1/2" high sides
- Sidemount, full extension glides
- For 24" deep cabinets



Trash Pull Out Single Standard Base

- Solid wood, dovetail base support
- Undermount, full extension glides with soft close
- Comes with one 35-quart waste container
- Can be fitted in B15



Trash Pull Out Double Standard Base

Order Code: **BTB18**

- Solid wood, dovetail base support
- Undermount, full extension glides with soft close
- Comes with two 30 quart waste containers
- Can be fitted in B18



How to Clean Your Cabinets

The finish on Spirits Cabinet cabinetry is just like that of a high quality piece of furniture. Although it is designed to protect against normal, every day home use, general upkeep, and cleanliness are very important. With proper care, your cabinetry will look great for generations to come.

Dusting

Dust your cabinets frequently with a soft, lint-free cloth. If need be, slightly dampen the cloth with water or a spray-type dust remover.

Spills

Clean spills and splatters immediately. Prolonged exposure to spills, including food, water, oil, grease, and other liquids, can cause permanent discoloration and/or damage to your cabinet's finish. To clean spills, use a clean, soft cloth dampened with mild soap. Dry immediately with another clean, soft cloth.

Cleaning

Use a clean, soft cloth dampened with mild soap to clean your cabinets. Dry immediately with another clean, soft cloth. There are also a variety of wood cleaning products available for use on cabinetry.

Waxing & Polishing

Waxing your cabinets is not required or recommended. Over time, the wax will build up on the surface of the cabinet. This can cause a hazy, streaky, or yellowed appearance, as well as attract dust particles. The wax can become very difficult to remove. We recommend that you clean and polish your cabinets once or twice each year. To polish your cabinets, use a light coat of quality furniture polish.

Glass Doors

If you have glass panels installed in your cabinet doors, you will want to clean them periodically. To clean the glass, you can use any commercial glass cleaner. Never apply glass cleaner directly to the glass. Spray a small amount of cleaner onto a clean, soft cloth or paper towel, then wipe the glass. Be careful not to damage the cabinet finish or hardware while cleaning.

Hardware

You will want to periodically clean knobs, pulls, or handles installed on your cabinet doors/drawers. To do so, use a clean, soft cloth dampened with mild soap. Thoroughly dry all hardware joints, surfaces, and the surrounding area with another clean, soft cloth.

Products to Avoid

- Harsh chemicals
- Solvents or petroleum-based products, such as mineral spirits, nail polish removers, or paint thinners
- Abrasive cleaning products
- Ammonia or cleaning products that may contain ammonia
- Bleach or cleaning products that may contain bleach



CLEANING, CARE, AND MAINTENANCE

How to Care for Your Cabinets

Self-Cleaning Appliances

Self-cleaning appliances use intense heat during the clean cycle. During installation and with age, the integrity of the seal or gasket on the appliance can be compromised. Because of this, Spirits Cabinet recommends the removal of any cabinet doors and/or drawers located adjacent to or directly above the appliance during a cleaning cycle.

Heat-Producing Appliances

Mounting or placing heat-producing appliances beneath cabinets is not recommended. The excess heat and moisture from appliances, such as coffee makers and toaster ovens, can damage your cabinets.

UV Effects

Ultraviolet light rays from natural sunlight can affect the appearance of your cabinets. The appearance of your cabinet(s) may change over time depending on the natural characteristics of wood and the applied finish, the amount/direction of light exposure, and the portion of the cabinet that receives light.

Cabinet Maintenance

No matter how carefully you are with your cabinetry, normal wear and tear from everyday use is inevitable. This is why Spirits Cabinet has made it easier than ever to keep your cabinets looking brand new.

Touch-Up

We offer touch-up markers and fill sticks that have been specially formulated for each of our high-quality cabinet finishes. Your Spirits Cabinet design professional can assist you in how to order and how to use these products.

NOTE: Substantial repairs may require the help of a professional refinisher.

Adjusting Your Cabinetry Hardware

Over time, the door hinges, soft-close pistons, drawer glides, and decorative hardware on your cabinetry may need to be tightened or adjusted. All of our hardware has been designed to be easily adjusted with a Phillips-head (crosshead) screwdriver. Soft close pistons are adjusted by simply turning the small dial on the backside of the piston with your finger.



PRODUCT AND FINISH INFORMATION

Because we use real wood in our products, there are certain characteristics and qualities with which you may not be familiar. Because your satisfaction is our number one priority, we want to make sure you are fully aware of the important information listed below regarding our cabinetry and the applied finish.

Expansion & Contraction Because half of the weight of freshly cut wood is water, these natural properties are such that they can react to climate or humidity changes in your home. Spirits Cabinet doors and face frames are manufactured from solid wood that has been carefully kiln-dried, retaining just enough moisture for proper construction and finishing. The center panels of the Spirits Cabinet doors are either wood or medium density fibreboard. As a product of nature, solid hardwoods continue to react to their surroundings long after the manufacturing process has been completed. When wood cabinet doors are in a warm, moist environment (high humidity), the wood expands. In a dry, colder environment (low humidity), the wood will contract. Even with humidity regulation, this phenomenon can be controlled, but it can never be completely eliminated.

Door panels are prone to minor expansion and contraction as seasonal temperature and humidity changes occur in a home. The contraction (shrinkage) of the center door panel during low humidity periods may result in the appearance of an unfinished line along the edge of the center panel. Spirits Cabinet does not consider the appearance of an unfinished line as a defect and will not replace doors due to this situation. It is recommended that a humidity control system is incorporated in a home to reduce the possibility of expansion and contraction in wood products. Touch-up markers are made available to cover this edge line. Oftentimes, touch-up for this issue may only be necessary within the first year.

Spirits Cabinet is not responsible for any of these conditions and variations.

Finishes

Over time, wood species in all finishes will exhibit color changes when exposed to different types of light and environment. Such color changes are to be expected and are not defects. Due to the natural variation and aging process of wood, minor differences may be observed in color match when replacing doors or adding cabinets at a later date. It is a characteristic of stained and painted wood finishes to age over time when exposed to smoke, sunlight, or general household cleaning chemicals.

Graining differences, mineral streaks, and wood color variations are expected in wood cabinetry and are not classified as defects. A newly installed kitchen could have these minor color variations.

Spirits Cabinet offers several types of painted finishes on cabinetry. Painted finishes are exceedingly different from the standard stained finish. Since normal movement is typical in wood products, certain climatic conditions can cause finish breaks, recesses, and joint/panel lines. Joint separation can be more visible on mitered doors. Consequently, in places and environments of extremely high or extremely low humidity, painted finishes are not recommended. Joint lines and variations are common attributes of painted finishes and will not be considered sufficient reasons for product replacement.

Some of our products have glaze finishes. Since glaze detailing is hand applied then hand wiped off, glaze may “hang up” or remain in any corners of the door or drawer profile. Because the glaze is a hand applied procedure, detailing can differ from piece to piece.

NOTE: *Independent testing has shown that discoloration will develop on doors, drawers, and cabinet parts after continued exposure to tobacco smoke. This is remarkably apparent on white and lighter finishes. We do not warrant discoloration in our products due to exposure to smoke.*

Joint Lines

Expansion and contraction in doors and face frames can cause visible lines at the joints. The finish will still protect the surface, and the structural integrity of the joint will not be affected. An open joint line is not considered a defect.



WARRANTY

I. Description of Warranty This warranty applies only to the original purchaser and is not transferrable. From the time of purchase, Spirits Cabinet offers an Industrial Standard 2-Years Warranty on all of its cabinetry. In addition to cabinetry, all drawers, shelves, roll out trays, and mechanical components are covered under the warranty as well. In the event that any Spirits Cabinet product fails during the course of normal use, Spirits Cabinet, at its discretion, will either repair or replace the defective product.

Whether the work was performed by a contractor, Spirits Cabinet authorized dealer, or you; any expenses involved in the shipping, removal, installation, or consequent damage of the defective product is not covered under this warranty. This warranty does not apply to products installed in mobile homes or recreational vehicles.

II. Intended Use of Product

To be covered by this warranty, the product must be used only for its intended purpose(s). Cabinets that have been improperly stored, installed, misused, modified, mishandled, and/or subject to excessive moisture or extreme temperature and humidity levels are not covered under this warranty. In addition, any damage caused by smoking and/or environmental/chemical effects are also not covered under this warranty.

III. Anticipated Variance in Product The Spirits Cabinet warranty only applies to product defects and does not apply to properties of natural wood that are inherent in natural wood species. Any time you have a natural wood product, occurrences such as pinholes, knots, and variances in color or grain are normal and are not covered under this warranty.

Because half of the weight of freshly cut wood is water, its natural properties are such that they can react to climate and/or humidity changes in your home. Spirits Cabinet doors and face frames are manufactured from solid wood that has been carefully kiln-dried, retaining just enough moisture for proper construction and finishing. These hardwoods continue to react to their surroundings long after the manufacturing process has been completed. When wood cabinet doors are in a warm, moist environment (high humidity), the wood expands. In a dry, colder environment (low humidity), the wood will contract. Even with humidity regulation, this phenomenon can be controlled, but it can never be completely eliminated.

Door panels may also be prone to this minor expansion and contraction as seasonal temperature and humidity changes occur in your home. The contraction (shrinkage) of the center door panel during periods of low humidity may result in the appearance of an unfinished line along the edge of the center panel. Spirits Cabinet does not consider the appearance of this line as a defect and will not replace doors due to this situation. Touch-up markers are made available to cover this edge line. The installation of a humidity control system is recommended to reduce the possibility of expansion and contraction in wood products.

All Spirits Cabinet doors are manufactured in moisture-controlled environments under precise specifications. Although slight door warpage can be common in one or two doors within a newly installed kitchen, any door that has not been through a complete heating and cooling cycle has the possibility of warping. Slight warpage can be eliminated through hinge adjustments. Any warping that continues to occur should be further examined by removing the door from the cabinet and placing it on a flat surface. Hinge spacers are available through your authorized Spirits Cabinet dealer in cases where the



WARRANTY

warping cannot be eliminated through hinge adjustments. If warping cannot be eliminated through hinge adjustments or the use of hinge spacers, and if the doors have been through a complete heating and cooling cycle, and if all of the cabinets are true and plumb; then Spirits Cabinet will consider replacement.

As mentioned above, normal movement in wood products is typical. In addition to issues listed above, climate conditions can cause finish breaks, recesses, and joint/panel lines. An open joint line is not considered a defect and is not covered under this warranty.

IV. Product Repair or Replacement Throughout the duration of the warranty period, Spirits Cabinet's sole obligation is to repair or replace any defective product at no charge. This warranty only applies to cabinets and affiliated products sold by Spirits Cabinet offered through an authorized Spirits Cabinet dealer. In the event that a claim is filed after the original product has been discontinued or cancelled, Spirits Cabinet will honor the warranty, at its discretion, subject to the availability of the product, by either:

- Repairing or replacing the defective product with a new product of the same style

OR

- Repairing or replacing the defective product with a product of equal value and complementary style in order to maintain the appearance of the original cabinetry purchase.

An exact match between the finish of the original purchased product and the replacement or repaired product is not guaranteed.

V. Rights of Consumer There are no other warranties, disclosed or indicated, associated with this product. This document serves as a description of the consumer's definitive legal rights within the transaction and is the exclusive warranty of Spirits Cabinet. The exclusion or partial limitation of contingent or substantial damages is not permissible in some states. The consumer may also have further rights from state-to-state which are not cited in this warranty.

VI. Submission of a Claim All claims must be submitted to the authorized Spirits Cabinet dealer where the cabinets were originally purchased. Claims are to be submitted in writing. Every claim must include a dated copy of the original sales receipt as proof of purchase. Unless and until the product is specifically requested by the Spirits Cabinet Claims Department, please do not send the defective item(s).



SALES POLICY - PAYMENT, WARRANTY AND RETURN

V08.09252024

PAYMENT

- We accept cash, ZELLE to zelle@spiritsfurniture.com and all credit cards with additional charge.

WARRANTY

- We provide 12 (twelve) months warranty for our manufactured products.
- As soon you open the box and notice any problem, notify by email your sales representative.
- Please check the list and items before signing on packing slips when you pick up.
- Once the Packing Slip is signed showing that you received all items, you are responsible for any missing items afterward.
- Claim for concealed damage must be reported along with pictures within 72 hours upon receiving time.
- For factory defects or missing parts, we need quality pictures before assembly.
- Provide the sales order number or invoice number, which cabinet SKU and what specific part is damaged.
- A small scratch can potentially be fixed with a touch up kit. If you are unable to repair, then we can replace.
- We do not replace the full cabinet. We only replace the damaged part, please be sure to provide complete information to expedite your claim process.
- If we have not provided a floor plan layout for your order, we will not accept responsibility or liability for the accuracy of the items on the invoice.

SPECIAL ORDERS AND ITEMS

- Every item other than Shaker White Cabinets (regular Base and Wall), will be considered Special Order.
- Items out of stock, special orders and accessories will be available to pick up or delivery up to 21 (twenty-one) days after order confirmation, upon availability.
- All special orders must be paid upfront and the payment itself does not reflect product availability or order confirmation.
- Pick up after 7 days of the scheduled pickup date, there will be a \$50 daily storage fee charged after.

RETURNS

- Absolutely no returns on all assembled/installed and special-order cabinets.
- Absolutely no returns on Fillers, Moldings, Refrigerator panels, Shelf boards, Toe kicks and Back panels.
- We only issue store credit towards your account instead of monetary refunds.
- There will be a cancelation fee of \$50 on canceling orders and changing more than 5 items per order.
- We will charge 30% restocking fee for every return or refund.
- We will only accept returned items prior to 14 (fourteen) days after the delivery.
- We will not accept return of items that have been damaged by the transportation, assembled, or installed prior to the item's return.
- All returns must be on the original package.

DELIVERY

- We prefer to have you picking up your items at our warehouse.
- We charge \$150,00 to deliver items in Orlando. Out of Orlando, please ask.
- We only deliver on Wednesdays and Fridays, and we are free to move our schedule to better fit our need.



CONTACT US



9501 S ORANGE AVE, ORLANDO, FL 32824



SPIRITSCABINETRY.COM



OFFICE: 321-512-0224



SALES@SPIRITSCABINETRY.COM

