

● ● ●
SPIRITS
CABINETRY



Catalog and Specs 2025 - 2026

🌐 SPIRITSCABINETRY.COM

☎ OFFICE: 321-512-0224

✉ SALES@SPIRITSCABINETRY.COM



Table of Contents

ABOUT US	03
<hr/>	
COLLECTIONS	04
<hr/>	
CABINETS FEATURES	11
<hr/>	
HOW TO ORDER	12/13
<hr/>	
WALL CABINETS	14
<hr/>	
BASE CABINETS	19
<hr/>	
TALL CABINETS	22
<hr/>	
VANITY CABINETS	24
<hr/>	
ACCESSORIES AND MOLDING	26
<hr/>	
WEBSITE	29



About us

Our history

Founded in 2015, Spirits Cabinetry has a rich history in the kitchen and bathroom cabinetry business. Our journey began with a passion for products of great quality as well as a fair price, and a commitment to delivering excellence.

Over the years, we've grown from a small startup into a thriving cabinetry leader. We've overcome challenges, adapted to changing market dynamics, and expanded our offerings to meet the evolving needs of our valued customers.

Our dedication to innovation, quality, and customer satisfaction has been the driving force behind our success. We've built a team of talented professionals who share our vision and work tirelessly to ensure that every product or service bearing the Spirits Cabinets name is of the highest standard.

Today, we stand as a trusted and respected name in the cabinetry landscape, serving a diverse range of clients across Florida. As we look to the future, our commitment to excellence remains unwavering. We're excited to continue our journey and remain a partner of choice for cabinetry-related solutions.

Shaker White



Shaker Gray



Shaker Black



Shaker Pearl



ShakeNavy Blue



Shaker Concrete Gray

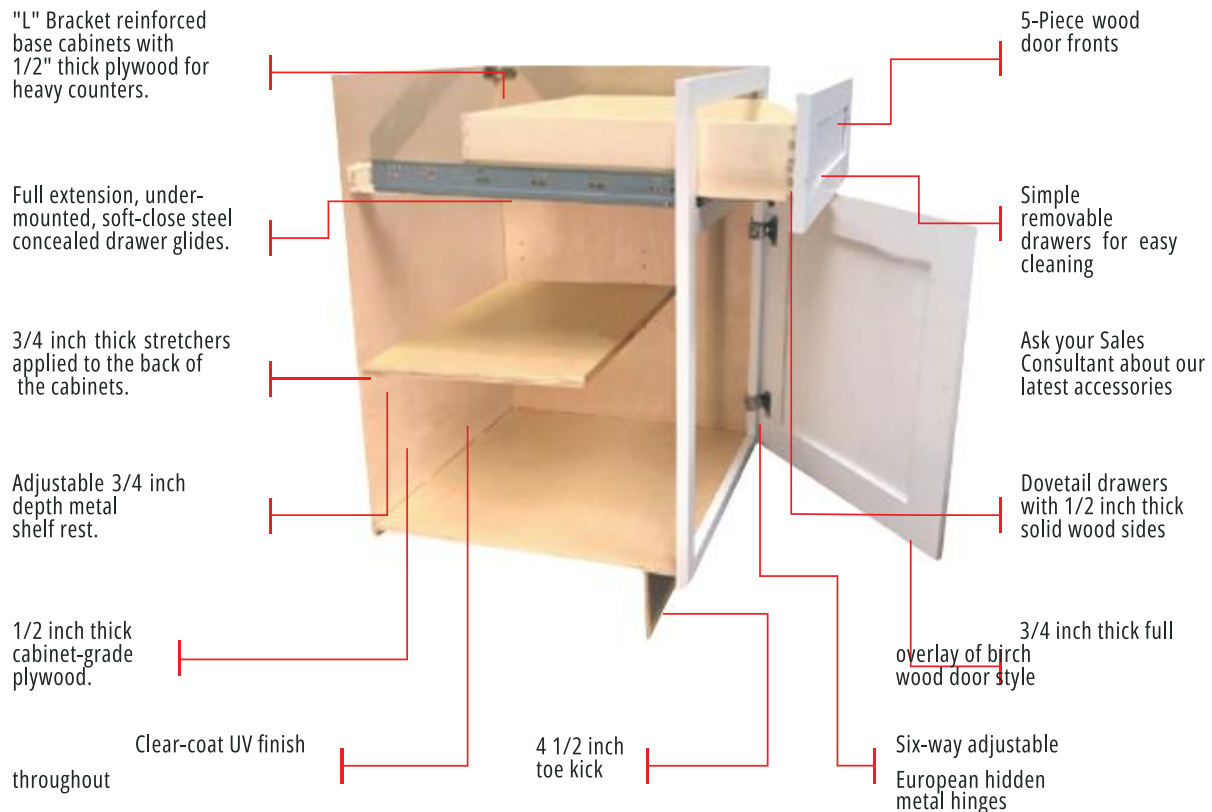


Caramel Shaker



CABINET

FEATURE



- 1.Full overlay panel, 3/4 inch solid wood
- 2.6-way adjustable European-style hinge with soft-close feature
- 3.Shelving is 3/4 inch thick cabinet-grade plywood with front edge banding.
- 4.Dovetail drawers with solid wood on all sides, full extension
- 5.Concealed under-mount full extension drawer glides with soft-close feature

- 6.1/2 inch cabinet-grade plywood box, UV coated natural plywood on interior
- 7.Bracket reinforcements for base cabinet
- 8.Double-doweled face frame joint
- 9.Hardwood face frame
- 10.Door bumpers

How to Order

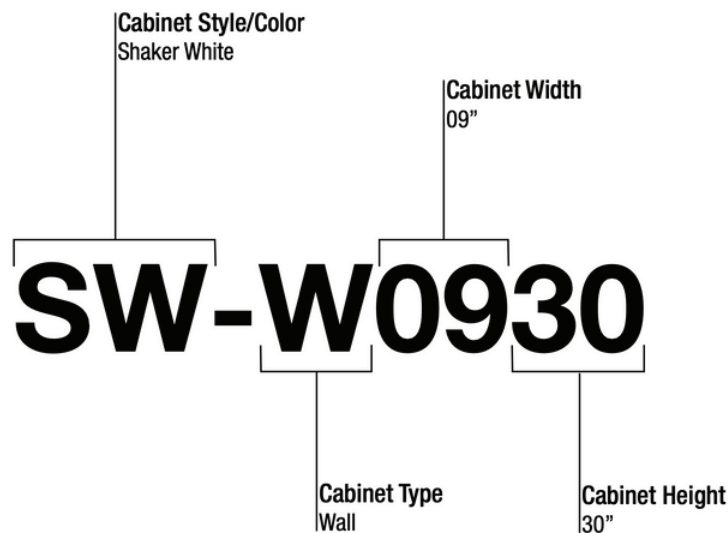
To Order:

Specify the 2-letter door style, followed by the product number for the cabinet.

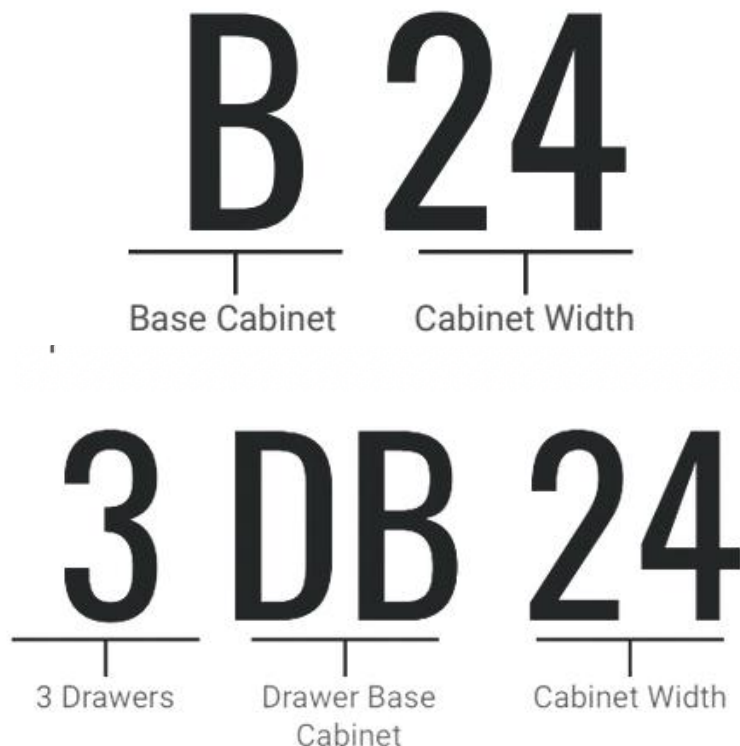
Example:

SW-W0930 would be the product number used to order a Shaker White(SW) Wall Cabinet, 09" wide, 30" high.

WALL CABINETS



BASE CABINETS



How to Order

To Order:

Specify the 2-letter door style, followed by the product number for the cabinet.

Example:

SW- 3-VDB12 would be the product number used to order a Shaker White(SW) Vanity, 12" wide, 3 drawers.

VANITY CABINETS

VS 24

Vanity Sink Base Cabinet Cabinet Width

3 VDB 12

3 Drawers Vanity Drawer Base Cabinet Cabinet Width

TALL CABINETS

PC 18 84

Utility Pantry Cabinet Width Cabinet Height

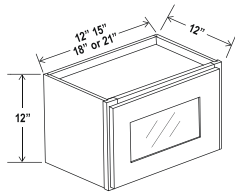
WALL

CABINETS



Wall Cabinet Single Glass Door

Item Code		W	H	D
W1212GD	Cabinet Door	12	12	12
W1512GD	Cabinet Door	15	12	12
W1812GD	Cabinet Door	18	12	12
W2112GD	Cabinet Door	21	12	12



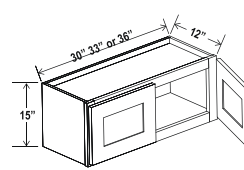
Clear glass included
Color Matched Interior

12"H

15"H

Wall Cabinet Double Doors (Bridge)

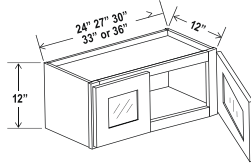
Item Code		W	H	D
W3015	Cabinet Door	30	15	12
W3315	Cabinet Door	33	15	12
W3615	Cabinet Door	36	15	12



No shelf

Wall Cabinet Double Glass Doors

Item Code		W	H	D
W2412GD	Cabinet Door	24	12	12
W2712GD	Cabinet Door	27	12	12
W3012GD	Cabinet Door	30	12	12
W3312GD	Cabinet Door	33	12	12
W3612GD	Cabinet Door	36	12	12



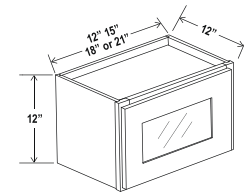
Clear glass included
Color Matched Interior

12"H

18"H

Wall Cabinet Single Glass Door

Item Code		W	H	D
W1218GD	Cabinet Door	12	18	12
W1518GD	Cabinet Door	15	18	12
W1818GD	Cabinet Door	18	18	12
W2118GD	Cabinet Door	21	18	12

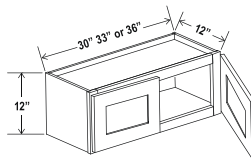


Clear glass included
Color Matched Interior

Wall Cabinet Double Doors (Bridge)

Item Code		W	H	D
W3012	Cabinet Door	30	12	12
W3312	Cabinet Door	33	12	12
W3612	Cabinet Door	36	12	12

No shelves

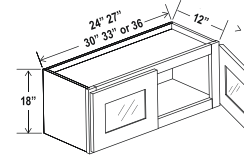


12"H

18"H

Wall Cabinet Double Glass Doors

Item Code		W	H	D
W2418GD	Cabinet Door	24	18	12
W2718GD	Cabinet Door	27	18	12
W3018GD	Cabinet Door	30	18	12
W3318GD	Cabinet Door	33	18	12
W3618GD	Cabinet Door	36	18	12

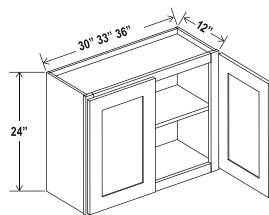


Clear glass included
Color Matched Interior

****SPECIAL ORDER****

Wall Cabinet Double Doors (Bridge)

Item Code		W	H	D
W3024	Cabinet Door	30	24	12
W3324	Cabinet Door	33	24	12
W3624	Cabinet Door	36	24	12



One adjustable shelf

24"H

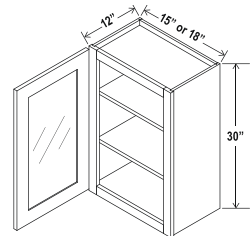
Wall Cabinet Single Glass Door

Item Code		W	H	D
W1530GD	Cabinet Door	15	30	12
W1830GD	Cabinet Door	18	30	12

****SPECIAL ORDER****

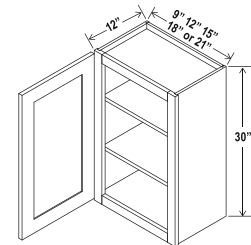
Clear glass included
Color matched interior
Two adjustable shelves

30"H



Wall Cabinet Single Door

Item Code		W	H	D
W0930	Cabinet Door	9	30	12
W1230	Cabinet Door	12	30	12
W1530	Cabinet Door	15	30	12
W1830	Cabinet Door	18	30	12
W2130	Cabinet Door	21	30	12



Two adjustable shelves

30"H

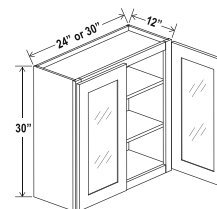
30"H

Wall Cabinet Double Glass Doors

Item Code		W	H	D
W2430GD	Cabinet Door	24	30	12
W3030GD	Cabinet Door	30	30	12

Clear glass included
Color matched interior
Two adjustable shelves

****SPECIAL ORDER****

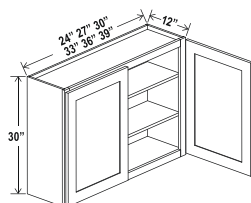


30"H

Wall Cabinet Double Doors

Item Code		W	H	D
W2430	Cabinet Door	24	30	12
W2730	Cabinet Door	27	30	12
W3030	Cabinet Door	30	30	12
W3330	Cabinet Door	33	30	12
W3630	Cabinet Door	36	30	12

Two adjustable shelves

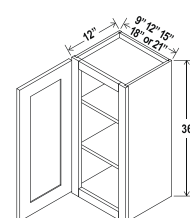


36"H

Wall Cabinet Single Door

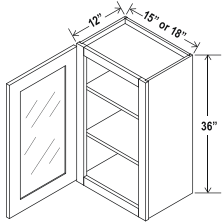
Item Code		W	H	D
W0936	Cabinet Door	9	36	12
W1236	Cabinet Door	12	36	12
W1536	Cabinet Door	15	36	12
W1836	Cabinet Door	18	36	12
W2136	Cabinet Door	21	36	12

Two adjustable shelves



Wall Cabinet Single Glass Door

Item Code		W	H	D
W1536GD	Cabinet Door	15	36	12
W1836GD	Cabinet Door	18	36	12

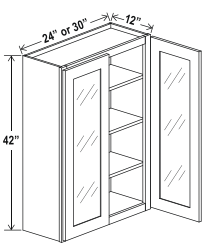


Clear glass included
Color Matched Interior
Two adjustable shelves

36”H

Wall Cabinet Double Glass Doors

Item Code		W	H	D
W2442GD	Cabinet Door	24	42	24
W3042GD	Cabinet Door	30	42	12

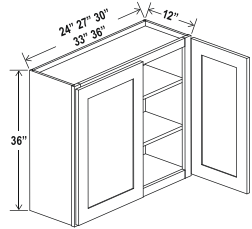


Clear glass included
Color matched interior
Three adjustable shelves

42”H

Wall Cabinet Double Doors

Item Code		W	H	D
W2436	Cabinet Door	24	36	12
W2736	Cabinet Door	27	36	12
W3036	Cabinet Door	30	36	12
W3336	Cabinet Door	33	36	12
W3636	Cabinet Door	36	36	12

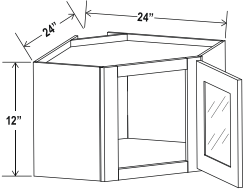


Two adjustable shelves

36”H

Diagonal Corner Wall Glass Door

Item Code		W	H	D
WDC2412GD	Cabinet Door	24	12	12
WDC2818GD	Cabinet Door	28	12	18

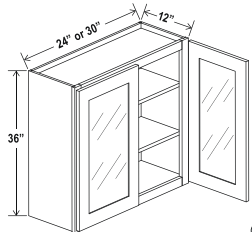


Clear glass included
Color matched interior
No shelf

24”W

Wall Cabinet Double Glass Doors

Item Code		W	H	D
W2436GD		24	36	12
W3036GD		30	36	12

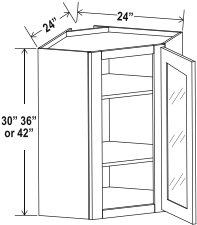


Clear glass included
Color Matched Interior
Two adjustable shelves

36”H

Diagonal Corner Wall Glass Door

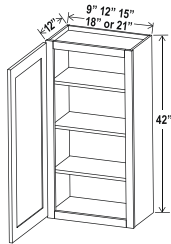
Item Code		W	H	D
WDC2430GD	Cabinet Door	24	30	12
WDC2436GD	Cabinet Door	24	36	12
WDC2442GD	Cabinet Door	24	42	12



Color matched interior
Two adjustable shelves (30"-36")
Three adjustable shelves (42")

24”W

42”H



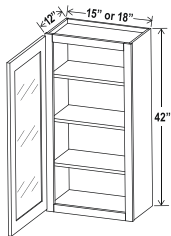
Wall Cabinet Single Door

Item Code		W	H	D
W0942		9	42	12
W1242		12	42	12
W1542		15	42	12
W1842		18	42	12
W2142		21	42	12

Three adjustable shelves

NOTES:

42”H

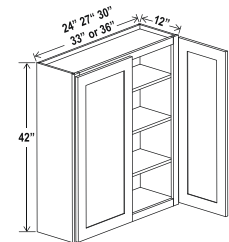


Wall Cabinet Single Glass Door

Item Code		W	H	D
W1542GD		15	42	12
W1842GD		18	42	12

Clear glass included
Color matched interior
Three adjustable shelves

42”H



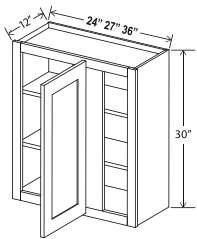
Wall Cabinet Double Doors

Item Code		W	H	D
W2442		24	42	12
W2742		27	42	12
W3042		30	42	12
W3342		33	42	12
W3642		36	42	12

Three adjustable shelves

Wall Blind Corner Cabinet

Item Code		W	H	D
WBC2730	Cabinet Door	27	30	12

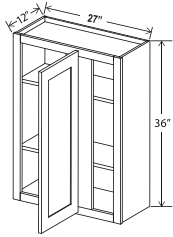


30”H

Two adjustable shelves
Can be pulled for exact fit

Wall Blind Corner Cabinet

Item Code		W	H	D
WBC2736	Cabinet Door	27	36	12

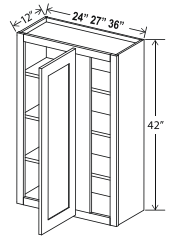


36”H

Two adjustable shelves
Can be pulled for exact fit

Wall Blind Corner Cabinet

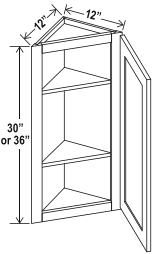
Item Code		W	H	D
WBC2742	Cabinet Door	27	42	12



42”H

Three adjustable shelves
Can be pulled for exact fit

12”W

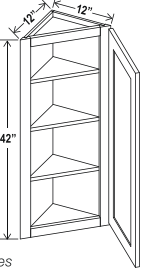


Two adjustable shelves

Angle Wall Cabinet

Item Code		W	H	D
AW1230	Cabinet Door	12	30	12
AW1236	Cabinet Door	12	36	12

12”W

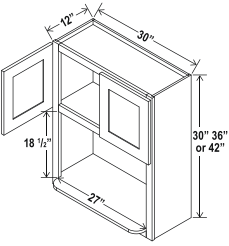


Three adjustable shelves

Angle Wall Cabinet

Item Code		W	H	D
AW1242		12	42	12

30”W



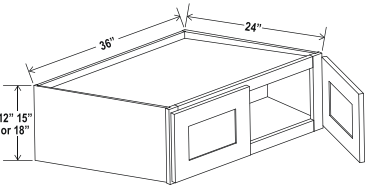
Microwave Wall Cabinet

Item Code		W	H	D
M03030		30	30	12
M03036		30	36	12
M03042		30	42	12

Opening Dimensions: 27 W x 18 1/2 H

36”W

Refrigerator Wall Cabinet Double Doors

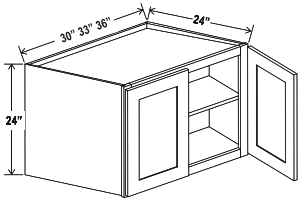


Item Code		W	H	D
W361224	Cabinet Door	36	12	24
W361524	Cabinet Door	36	15	24
W361824	Cabinet Door	36	18	24

No Shelf

Refrigerator Wall Cabinet Double Doors

Item Code		W	H	D
W362424	Cabinet Door	36	24	24

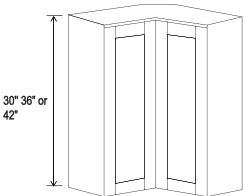


24”H

One adjustable shelf

Wall Easy Reach Corner Cabinet

Item Code		W	H	D
WER2430	Cabinet Door	24	30	12
WER2436	Cabinet Door	24	36	12
WER2442	Cabinet Door	24	42	12

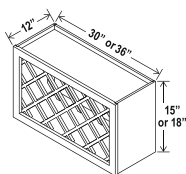


24”W

NOTES:

Wine Rack

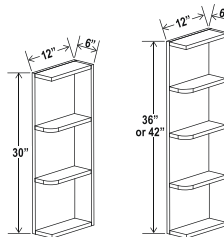
Item Code		W	H	D
WRC3015	Cabinet	30	15	12
WRC3018	Cabinet	30	18	12
WRC3615	Cabinet	36	15	24
WRC3618	Cabinet	36	18	24



Can install vertically or horizontally

30"W

6"W



Matching color interior

Open End Shelf

Item Code		W	H	D
OE630	Cabinet	6	30	12
OE636	Cabinet	6	36	12
OE642	Cabinet	6	42	12

NOTES:

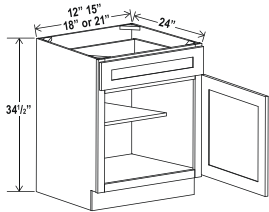
BASE

CABINETS



Base Cabinet Single Door

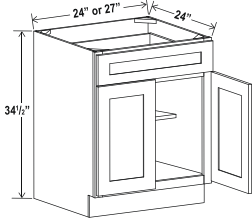
Item Code		W	H	D
B12	Cabinet Door Drawer	12	34 1/2	24
B15	Cabinet Door Drawer	15	34 1/2	24
B18	Cabinet Door Drawer	18	34 1/2	24
B21	Cabinet Door Drawer	21	34 1/2	24



One drawer

Base Cabinet Double Doors

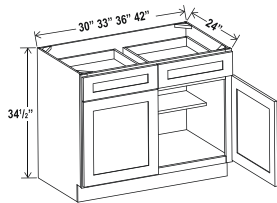
Item Code		W	H	D
B24	Cabinet Door Drawer	24	34 1/2	24
B27	Cabinet Door Drawer	27	34 1/2	24
B30	Cabinet Door Drawer	30	34 1/2	24



One drawer

Base Cabinet Double Doors

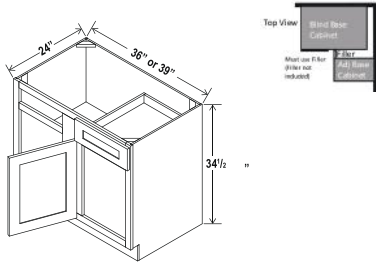
Item Code		W	H	D
B33	Cabinet Door Drawer	33	34 1/2	24
B36	Cabinet Door Drawer	36	34 1/2	24
B39	Cabinet Door Drawer	39	34 1/2	24
B42	Cabinet Door Drawer	42	34 1/2	24



Two drawers

Blind Corner Base Cabinet

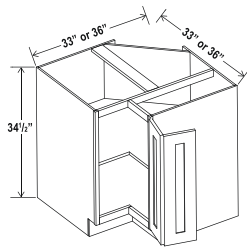
Item Code		W	H	D
BBC36-39	Cabinet Door Drawer	36	34 1/2	24
BBC42-45	Cabinet Door Drawer	39	34 1/3	24



BBC36 36"-39"
BBC42 42"-45"

Easy Reach Base Cabinet

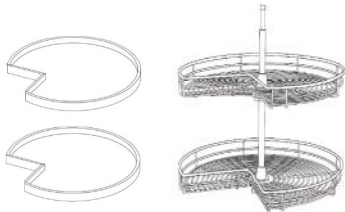
Item Code		W	H	D
ERB33	Cabinet Door	33	34 1/2	24
ERB36	Cabinet Door	36	34 1/2	24



One bi-fold door

Wood Tray / Chrome Tray

Item Code	
Wood Tray	
Chrome Tray 33	
Chrome Tray 36	



Add to ERB for Lazy Susan
** NOTE: Wood tray does not have a pole included in the middle.
Wood Tray *** Can be used in frameless line. Fits both 33" and 36"
Trays are shelf mounted

Two Drawer Base

Item Code		W	H	D
2DB24*	Cabinet Top Drawer Bottom Drawer	24	34 1/2	24
2DB30*	Cabinet Top Drawer Bottom Drawer	30	34 1/2	24
2DB36*	Cabinet Top Drawer Bottom Drawer	36	34 1/2	24

SPECIAL ORDER

Three Drawer Base

Item Code		W	H	D
3DB12	Cabinet Top Drawer Bottom Drawer	12	34 1/2	24
3DB15	Cabinet Top Drawer Bottom Drawer	15	34 1/2	24
3DB18	Cabinet Top Drawer Bottom Drawer	18	34 1/2	24
3DB21	Cabinet Top Drawer Bottom Drawer	21	34 1/2	24
3DB24	Cabinet Top Drawer Bottom Drawer	24	34 1/2	24
3DB27	Cabinet Top Drawer Bottom Drawer	27	34 1/2	24
3DB30	Cabinet Top Drawer Bottom Drawer	30	34 1/2	24
3DB33	Cabinet Top Drawer Bottom Drawer	33	34 1/2	24
3DB36	Cabinet Top Drawer Bottom Drawer	36	34 1/2	24

Document File Base Cabinet

Item Code		W	H	D
DFB18	Cabinet Top Drawer Bottom Drawer	18	29 1/2	21

*Hardware not included.

SPECIAL ORDER

Base End Cabinet

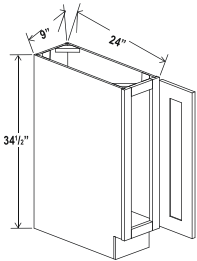
Item Code		W	H	D
BEC24	Cabinet Door	24	34 1/2	24

SPECIAL ORDER

Both doors operational

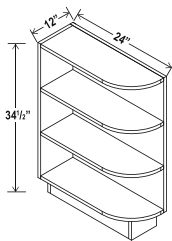
Base Tray

Item Code		W	H	D
BT09	Cabinet Door	9	34 1/2	24

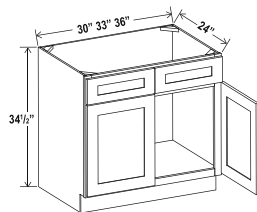


Base End Shelf

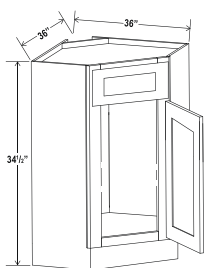
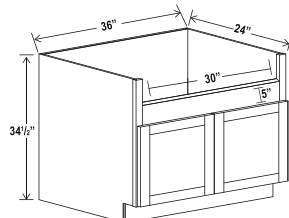
Item Code		W	H	D
BES12	Cabinet	12	34 1/2	24



Item Code		W	H	D
SB30	Cabinet Door Drawer	30	34 1/2	24
SB33	Cabinet Door Drawer	33	34 1/2	24
SB36	Cabinet Door Drawer	36	34 1/2	24
SB42	Cabinet Door Drawer	42	34 1/2	24

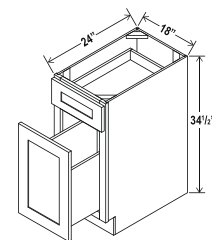


Item Code		W	H	D
FSB36	Cabinet Door	36	34 1/2	24
	Sink Trimout: 30"W X 7 1/2"-9"H			

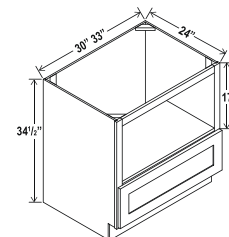


Item Code		W	H	D
CSB36	Cabinet Door Depth	36	34 1/2	36

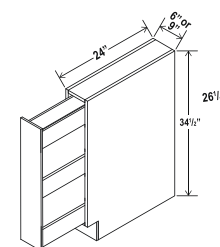
Item Code		W	H	D
TCK15-1	Cabinet Top Drawer Bottom Drawer	15	34 1/2	24
TCK18-2		18	34 1/2	24



Item Code		W	H	D
MB30	Cabinet Drawer	30	34 1/2	24
	Opening Dimensions: 27"W x 17"H			
MB33	Cabinet Drawer	33	34 1/2	24
	Opening Dimensions: 30"W x 17"H			



Item Code		W	H	D
SPB6	Cabinet Drawer	6	34 1/2	24
SPB9	Cabinet Drawer	9	34 1/2	24



NOTES:

NOTES:

TALL CABINETS

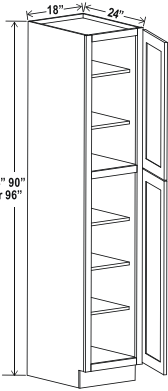
UTILITY PANTRY & —————
OVEN CABINETS



Utility Pantry

Item Code		W	H	D
PC188424	Cabinet Top Door Bottom Door	18	84	24
PC189024	Cabinet Top Door Bottom Door	18	90	24
PC189624	Cabinet Top Door Bottom Door	18	96	24

Two doors
Two adjustable top shelves
Three bottom shelves
Note: Roll out shelf kits available

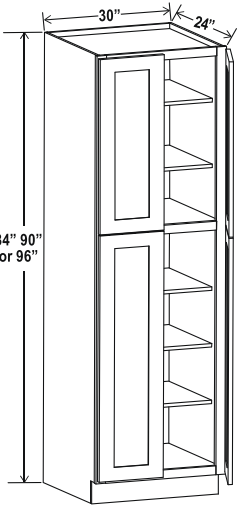


18”W

Utility Pantry

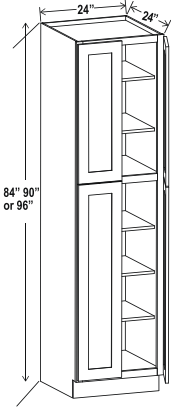
Item Code		W	H	D
PC308424	Cabinet Top Door Bottom Door	30	84	24
PC309024	Cabinet Top Door Bottom Door	30	90	24
PC309624	Cabinet Top Door Bottom Door	30	96	24

Four doors
Two adjustable top shelves
Three bottom shelves
Note: Roll out shelf kits attached



30”W

24”W



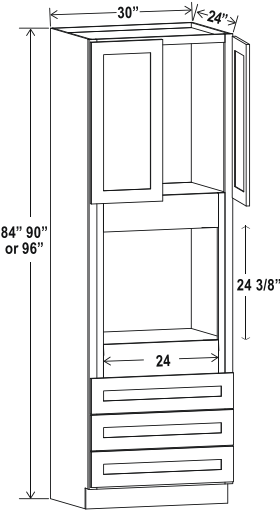
Four doors
Two adjustable top shelves
Three bottom shelves
Note: Roll out shelf kits available

Utility Pantry

Item Code		W	H	D
PC248424	Cabinet Top Door Bottom Door	24	84	24
PC249024	Cabinet Top Door Bottom Door	24	90	24
PC249624	Cabinet Top Door Bottom Door	24	96	24

NOTES:

30”W

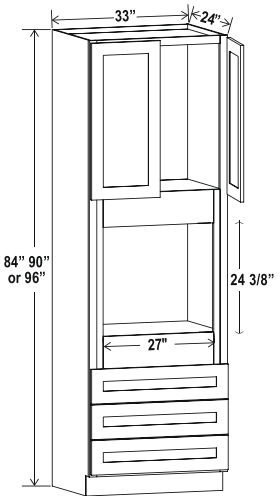


Two doors
One large open shelf
Three bottom drawers
Note: Drawers may be removed to accommodate double ovens

Oven Pantry

Item Code		W	H	D
OC308424	Cabinet Door Drawer	30	84	24
Opening Dimensions : 24 W x 24 3/8 H				
OC309024	Cabinet Door Drawer	30	90	24
Opening Dimensions : 24 W x 24 3/8 H				
OC309624	Cabinet Door Drawer	30	96	24
Opening Dimensions : 24 W x 24 3/8 H				

33”W



Two doors
One large open shelf
Three bottom drawers
Note: Drawers may be removed to accommodate double ovens.

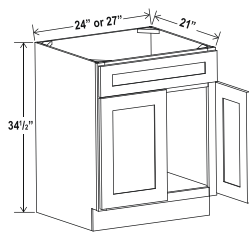
Oven Pantry

Item Code		W	H	D
OC338424	Cabinet Door Drawer	33	84	24
Opening Dimensions: 27 W x 24 3/8 H				
OC339024	Cabinet Door Drawer	33	90	24
Opening Dimensions: 27 W x 24 3/8 H				
OC339624	Cabinet Door Drawer	33	96	24
Opening Dimensions: 27 W x 24 3/8 H				

VANITY

CABINETS

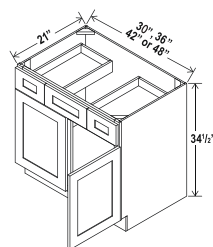




Vanity Sink Base

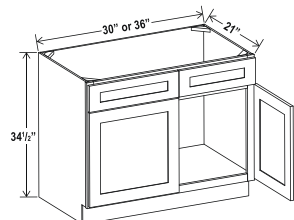
Item Code		W	H	D
VS24	Cabinet Door Drawer	24	34 1/2	21
VS27	Cabinet Door Drawer	27	34 1/2	21

One dummy drawer



Vanity Combo

Item Code		W	H	D
VC30	Cabinet Door Outside Drawer Center Drawer	30	34 1/2	21
VC36	Cabinet Door Outside Drawer Center Drawer	36	34 1/2	21
VC42	Cabinet Door Outside Drawer Center Drawer	42	34 1/2	21
VC48	Cabinet Door Outside Drawer Center Drawer	48	34 1/2	21



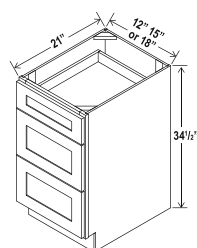
Vanity Sink Base

Item Code		W	H	D
VS30	Cabinet Door Drawer	30	34 1/2	21
VS33	Cabinet Door Drawer	33	34 1/2	21
VS36	Cabinet Door Drawer	36	34 1/2	21

Two dummy drawers

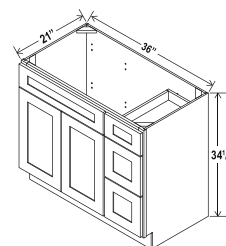
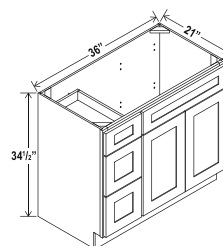
Vanity Combo

Item Code		W	H	D
V3621DL	Cabinet Door Long Drawer Top Drawer Bottom Drawer	36	34 1/2	21
V3621DR	Cabinet Door Long Drawer Top Drawer Bottom Drawer	36	34 1/2	21

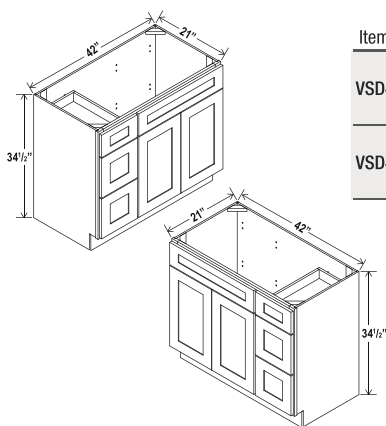


Vanity Drawer Base Cabinet

Item Code		W	H	D
3VDB12	Cabinet Top Drawer Bottom Drawer	12	34 1/2	21
3VDB15	Cabinet Top Drawer Bottom Drawer	15	34 1/2	21
3VDB18	Cabinet Top Drawer Bottom Drawer	18	34 1/2	21
3VDB21	Cabinet Top Drawer Bottom Drawer	21	34 1/2	21
3VDB24	Cabinet Top Drawer Bottom Drawer	24	34 1/2	21



V3621DL: 36" combo with drawers on left
V3621DR: 36" combo with drawers on right

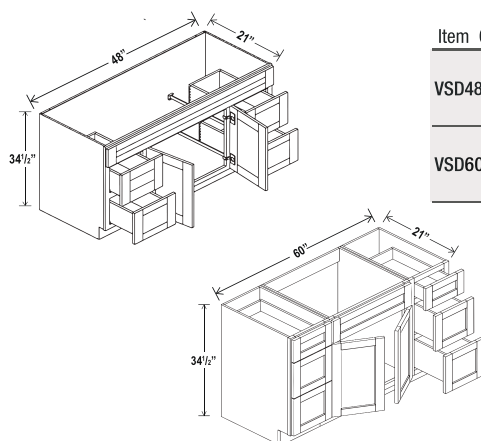


Vanity Combo

Item Code		W	H	D
VSD4221R	Cabinet Door Outside Drawer Two Drawers on Each Side	42	34 1/2	21
VSD4221L	Cabinet Door Outside Drawer Two Drawers on Each Side	42	34 1/2	21

VSD42R: 42" Combo With Drawers on Left
VSD42L: 42" Combo With Drawers on Right

NOTES:



Vanity Combo

Item Code		W	H	D
VSD4821D	Cabinet Door Outside Drawer Two Drawers on Each Side	48	34 1/2	21
VSD6021D	Cabinet Door Outside Drawer Two Drawers on Each Side	60	34 1/2	21

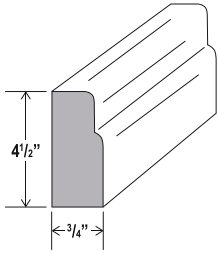
ACCESSORIES

& MOLDINGS



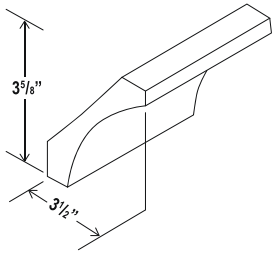
Furniture Base

Item Code	L
FBM	96



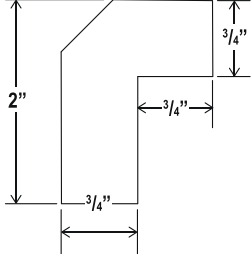
Cove Crown Moulding

Item Code	L
CM4	96



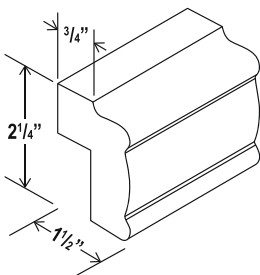
Angle Light Rail Moulding

Item Code	L
ALRM8	96



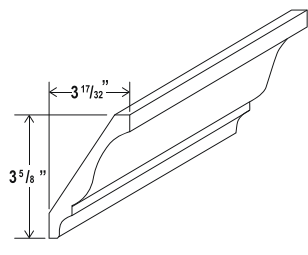
Light Rail Moulding

Item Code	L
LRM8	96



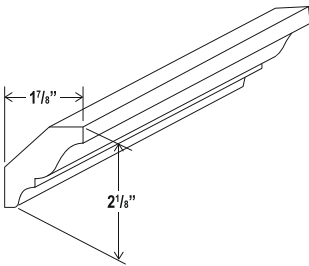
Decorative Moulding

Item Code	L
CM4R	96



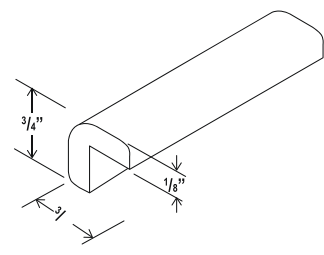
Crown Moulding

Item Code	L
CM2R	96



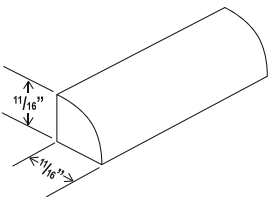
Outside Corner Moulding

Item Code	L
OCM8	96



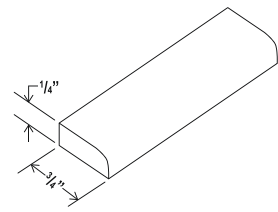
Shoe Moulding

Item Code	L
QRM	96



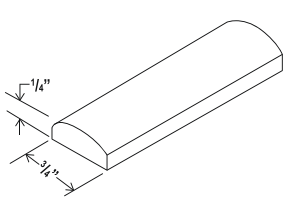
Scribe Moulding

Item Code	L
SM8(SCR)	96



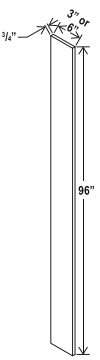
Batten Moulding

Item Code	L
BAM	96



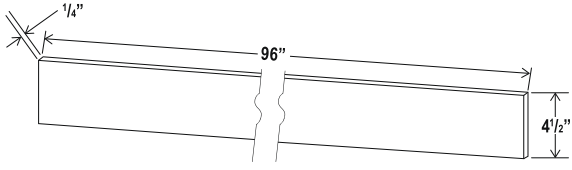
Tall Filler

Item Code	L
F396	96
F696	96



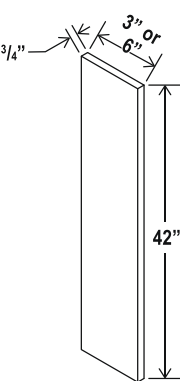
Toe Kick

Item Code	L
TKC	96



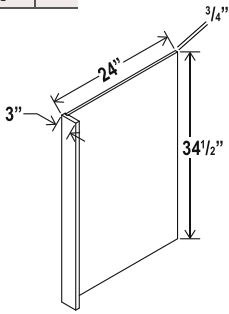
Filler

Item Code	L
F342	42
F642	42



Dishwasher Return Panel

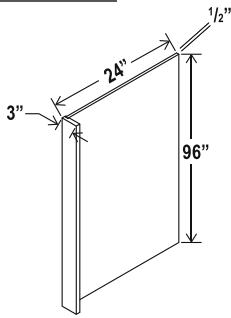
Item Code	L
DWR3	34 1/2



Note: Edges are not finished

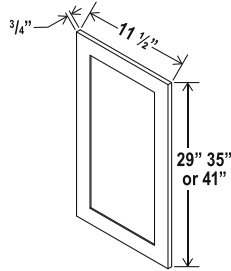
Refrigerator End Panel With Return

Item Code	L
RRP2496	96



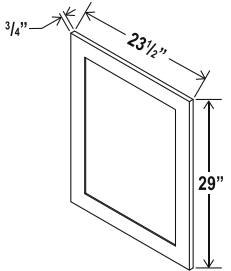
Wall Decorative Door Panel

Item Code	L
WDEP30	29
WDEP36	35
WDEP42	41



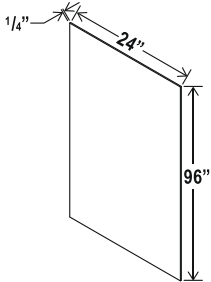
Base Decorative Door Panel

Item Code	L
BDEP	29



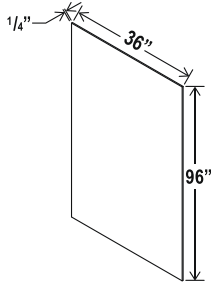
Refrigerator End Panel

Item Code	L
REP2496	96



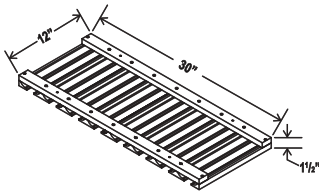
Refrigerator End Panel

Item Code	L
BP9636	96



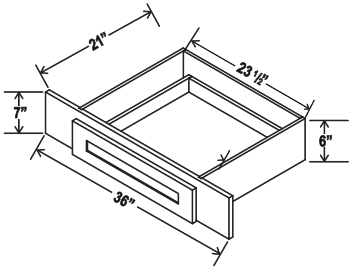
Glass Holder

Item Code
SGH30



Knee Drawer

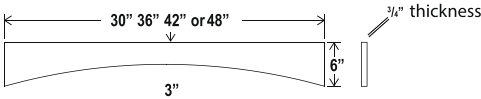
Item Code
VKD36



Note: Max trim to 30"
Note: Interior Drawer Dimensions 3 1/2" x 18 1/4" x 20 1/4"

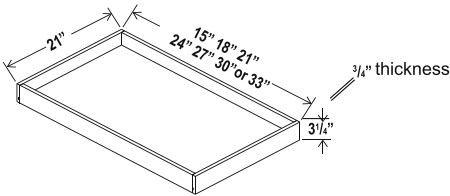
Arched Valance

Item Code
VA30
VA36
VA42
VA48



Roll Out Tray

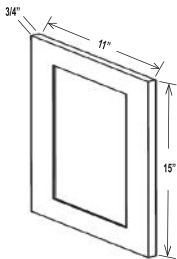
Item Code
ROT18
ROT21
ROT24
ROT27
ROT30
ROT33
ROT36



Note: Natural finish. Side mount only.
Full-extension, not self-closing

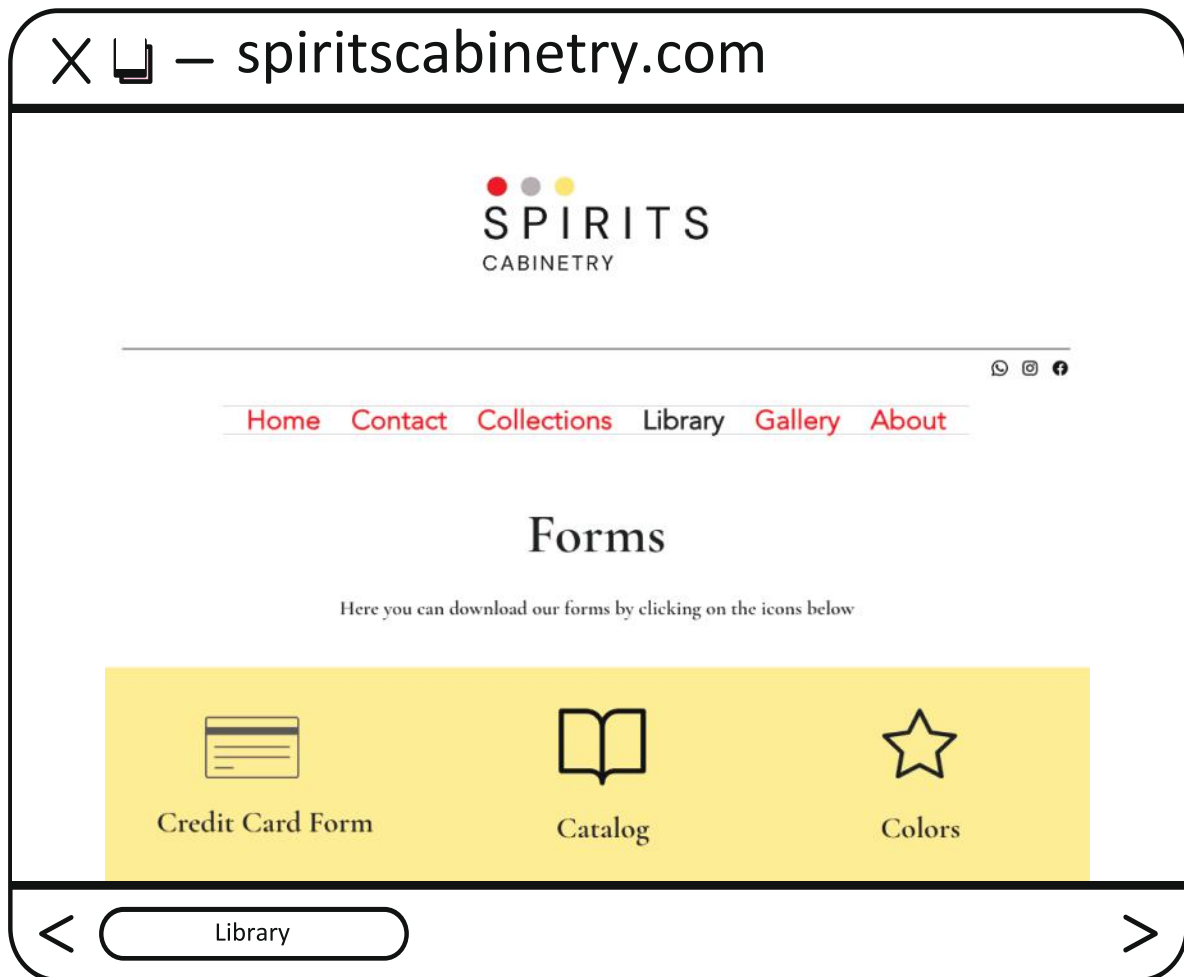
Sample Door

Item Code
SD



NOTES:

Our Website



On our website, you can find all of our forms conveniently located in the "**Library**" section. Additionally, you can explore our extensive **collections** and discover a wealth of resources tailored to your needs. If you require assistance, you can also find **contact** information for your Sales Representative or reach out to us directly via our office number.



SALES POLICY - PAYMENT, WARRANTY AND RETURN

V08.09252024

PAYMENT

- We accept cash, ZELLE to zelle@spiritsfurniture.com and all credit cards with additional charge.

WARRANTY

- We provide 12 (twelve) months warranty for our manufactured products.
- As soon you open the box and notice any problem, notify by email your sales representative.
- Please check the list and items before signing on packing slips when you pick up.
- Once the Packing Slip is signed showing that you received all items, you are responsible for any missing items afterward.
- Claim for concealed damage must be reported along with pictures within 72 hours upon receiving time.
- For factory defects or missing parts, we need quality pictures before assembly.
- Provide the sales order number or invoice number, which cabinet SKU and what specific part is damaged.
- A small scratch can potentially be fixed with a touch up kit. If you are unable to repair, then we can replace.
- We do not replace the full cabinet. We only replace the damaged part, please be sure to provide complete information to expedite your claim process.
- If we have not provided a floor plan layout for your order, we will not accept responsibility or liability for the accuracy of the items on the invoice.

SPECIAL ORDERS AND ITEMS

- Every item other than Shaker White Cabinets (regular Base and Wall), will be considered Special Order.
- Items out of stock, special orders and accessories will be available to pick up or delivery up to 21 (twenty-one) days after order confirmation, upon availability.
- All special orders must be paid upfront and the payment itself does not reflect product availability or order confirmation.
- Pick up after 7 days of the scheduled pickup date, there will be a \$50 daily storage fee charged after.

RETURNS

- Absolutely no returns on all assembled/installed and special-order cabinets.
- Absolutely no returns on Fillers, Moldings, Refrigerator panels, Shelf boards, Toe kicks and Back panels.
- We only issue store credit towards your account instead of monetary refunds.
- There will be a cancelation fee of \$50 on canceling orders and changing more than 5 items per order.
- We will charge 30% restocking fee for every return or refund.
- We will only accept returned items prior to 14 (fourteen) days after the delivery.
- We will not accept return of items that have been damaged by the transportation, assembled, or installed prior to the item's return.
- All returns must be on the original package.

DELIVERY

- We prefer to have you picking up your items at our warehouse.
- We charge \$150,00 to deliver items in Orlando. Out of Orlando, please ask.
- We only deliver on Wednesdays and Fridays, and we are free to move our schedule to better fit our need.

This image shows a single sheet of white paper with horizontal ruling lines. The lines are evenly spaced and run across the width of the page. There are no margins, text, or other markings on the paper.



CONTACT US



9501 S ORANGE AVE, ORLANDO, FL 32824



SPIRITSCABINETRY.COM



OFFICE: 321-512-0224



SALES@SPIRITSCABINETRY.COM

