

PRESENTED BY



December 5th, 2023

# DECONSTRUCTING ENVIRONMENTAL RACISM IN TACOMA

LA **RESISTENCIA**

Thank You for Coming :)

 [climate.alliance.south.sound](https://www.instagram.com/climate.alliance.south.sound)

# LAND ACKNOWLEDGEMENT

We acknowledge that we are on the traditional homelands of the Puyallup Tribe. The Puyallup people have lived on and stewarded these lands since the beginning of time, and continue to do so today. We recognize that this land acknowledgement is one small step toward true allyship and we commit to uplifting the voices, experiences, and histories of the Indigenous people of this land and beyond.

# LABOR ACKNOWLEDGEMENT



We acknowledge all women, workers, and migrant labor including voluntary, involuntary, trafficked, forced, and undocumented peoples who contributed to the building of the country and continue to serve within our labor force. Everything we enjoy is made possible through labor. We acknowledge all unpaid care-giving labor - and actively fight the exploitation of all oppressed peoples and workers.

--Adapted from Seattle College

# LA RESISTENCIA



## WEBSITE

[laresistencianw.org](http://laresistencianw.org)

## INSTAGRAM

 [laresistencianw](https://www.instagram.com/laresistencianw)

## TWITTER

[@ResistenciaNW](https://twitter.com/ResistenciaNW)



# WE WILL NOT STOP UNTIL NWDC IS NO MORE!



# CLIMATE ALLIANCE OF THE SOUTH SOUND

## WHO WE ARE

---

Tacoma based,  
community-led  
Grass roots  
environmental  
organization

## WHAT WE DO

---

Improve our  
living conditions  
through  
environmental  
action

## HOW WE DO IT

---

By empowering,  
organizing, and  
mobilizing our  
communities!

# DECONSTRUCTING ENVIRONMENTAL RACISM IN SOUTH TACOMA

## OVERVIEW

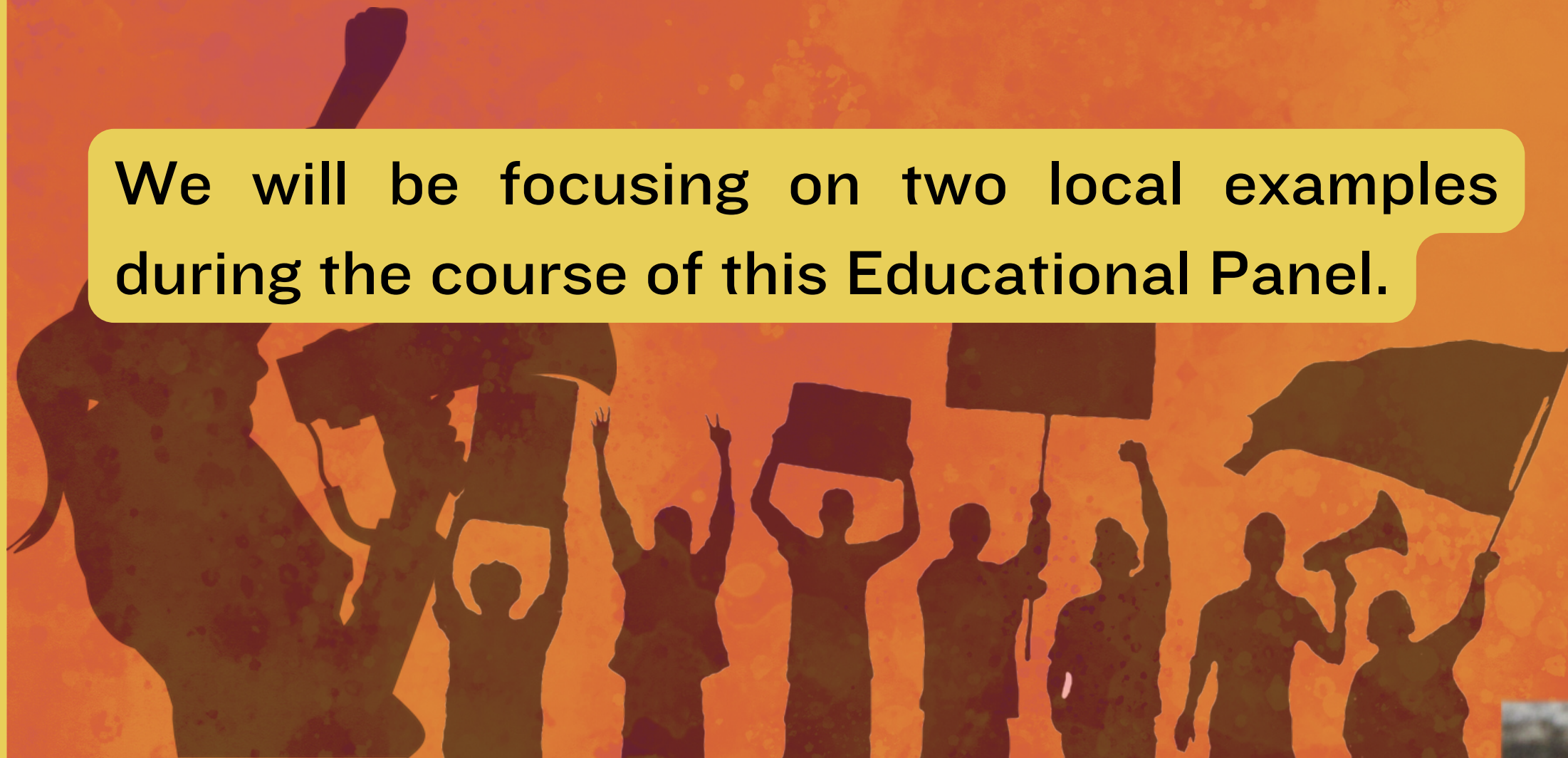
---

1. DEFINITIONS
2. NWDC **LA RESISTENCIA**
3. MEGA  
WAREHOUSE
4. CONCLUSION
5. GROUP PHOTO!

# WHAT IS ENVIRONMENTAL RACISM?

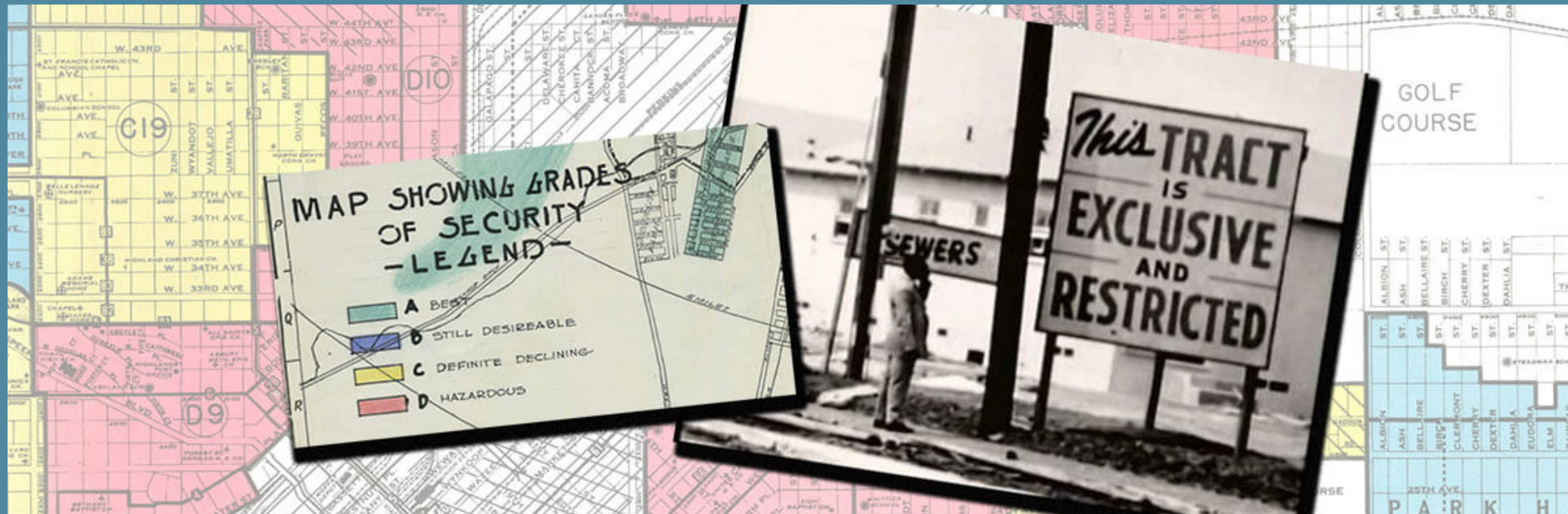
a form of institutional racism leading to landfills, incinerators, and hazardous waste disposal being disproportionately placed in communities of color, as coined by the father of environmental justice, Dr. Robert Bullard.

We will be focusing on two local examples during the course of this Educational Panel.



# WHAT IS REDLINING?

a discriminatory practice that consists of the systematic denial of services such as mortgages, insurance loans, and other financial services to residents of certain areas, based on their race or ethnicity. This discriminatory practice also extends to healthcare services and food infrastructure.

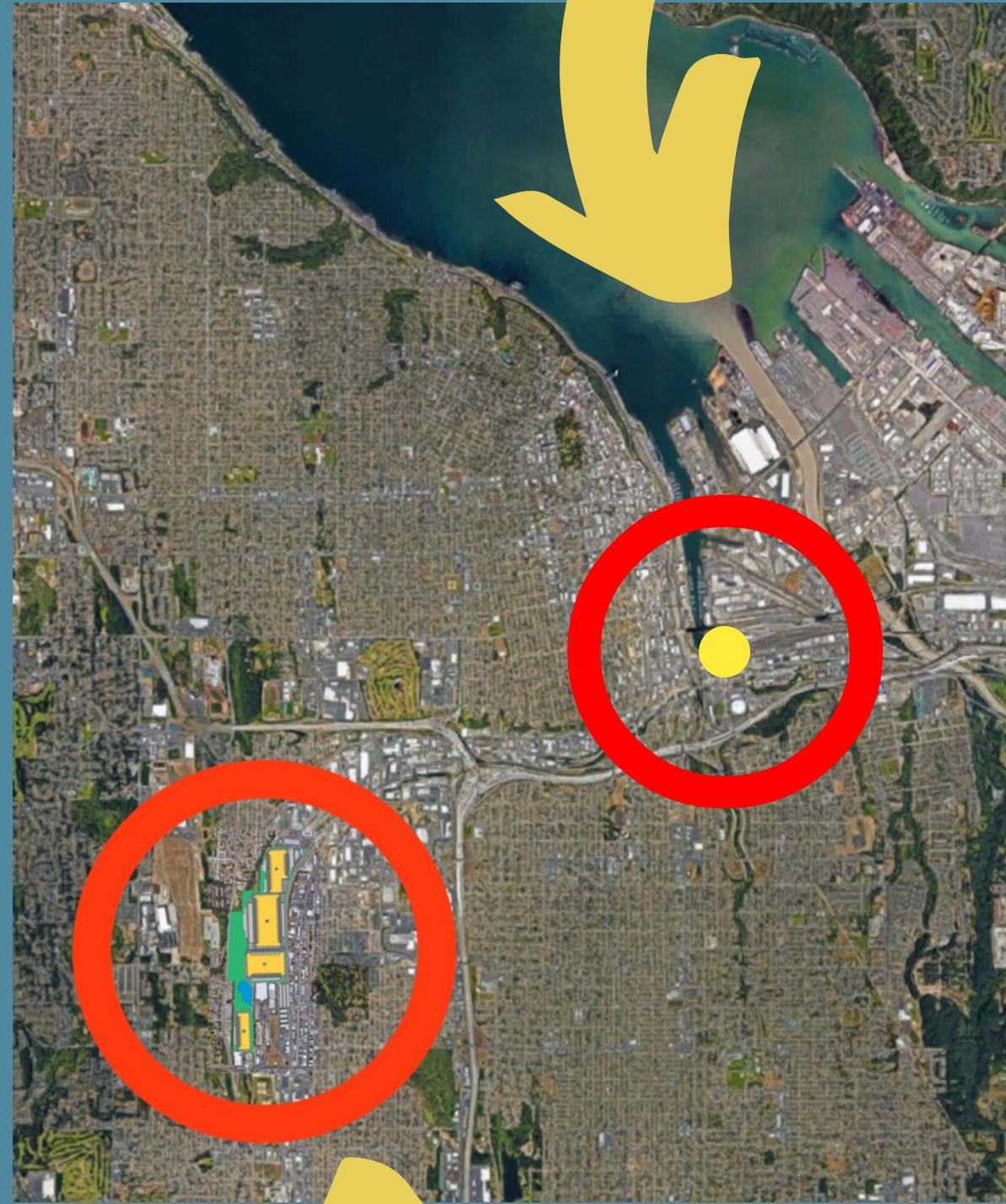




**TWO EXAMPLES OF**

**ENVIRONMENTAL  
RACISM HERE IN  
TACOMA**

**South Tacoma Mega  
Warehouse Site**



**Northwest  
Detention Center**

**REMEMBER THESE  
LOCATIONS - THEY  
WEREN'T PLACED HERE  
ON ACCIDENT**

# POLLUTION IN TACOMA



Superfund Site: A part of land the federal government has allocated money to help clean up as part of CERCLA

## **PORT OF TACOMA/NWDC**

The NWDC was deemed a superfund site unfit for human life. It is hazardous for any person to live there, and yet detainees are forced to endure these conditions.

---

## **SOUTH TACOMA/ WAREHOUSE SITE**

The South Tacoma Wetland, since being colonized, has been subjected to racial segregation and environmental devastation.

LA RESISTENCIA -  
NWDC TALK

LA **RESISTENCIA**



**CHINGA LA MIGRA**  
**CHINGA LA MIGRA**  
**CHINGA LA MIGRA**



# BRIDGE INDUSTRIAL MEGA WAREHOUSE PROJECT IN SOUTH TACOMA

## OVERVIEW

---

1. CAMPAIGN SO FAR
2. HISTORY OF SITE
3. IMPACTS -  
ECONOMIC, TRAFFIC,  
AND POLLUTION
4. OUR ENEMIES
5. WHAT WE CAN DO
6. HOW YOU CAN HELP
7. GROUP PHOTO!

# OUR WAREHOUSE CAMPAIGN SO FAR

After spending countless hours on:

- Public Actions
- Creating preventative legislature
- City Council public comment
- Communicating directly with representatives from City, County, State, and Federal offices, but all deferred to the sole decider: one city employee in the Planning Department.

Communities all over Tacoma have been working together to Stop the Mega Warehouse for over two years!



THE CITY DEEMED THIS PROJECT AS HAVING A “DETERMINATION OF NON-SIGNIFICANCE”

← 350 TACOMA

The Conversation 253

where talk is action



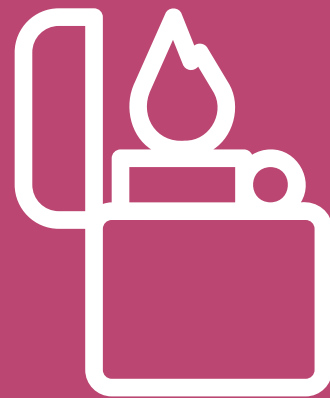
# WAREHOUSE CAMPAIGN TIMELINE

## PROPOSED PERMIT

STNC learned of the proposed permit and joined with 350Tacoma, The Conversation253 and other local groups/individuals opposing the City's intent of swiftly approving the SEPA review and critical areas permit.

## LEGAL APPEAL

In April of 2023, the city gave this project a "determination of mitigated non-significance" and shortly after, EarthJustice began a legal appeal



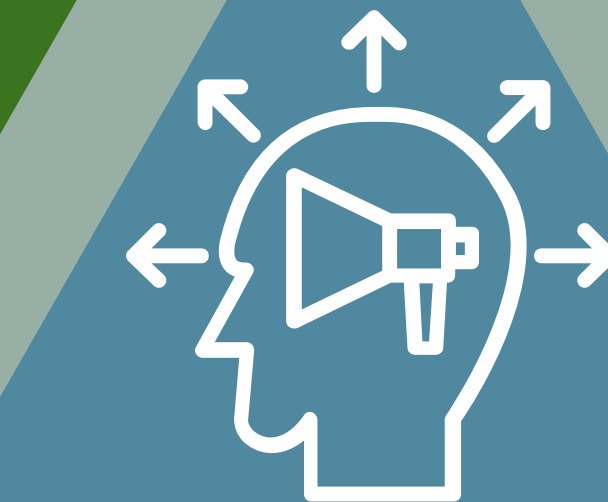
### STEGZ

Long-time community members Tim Smith and Heidi Stephens presented their work on STEGZ, igniting a new movement in South Tacoma



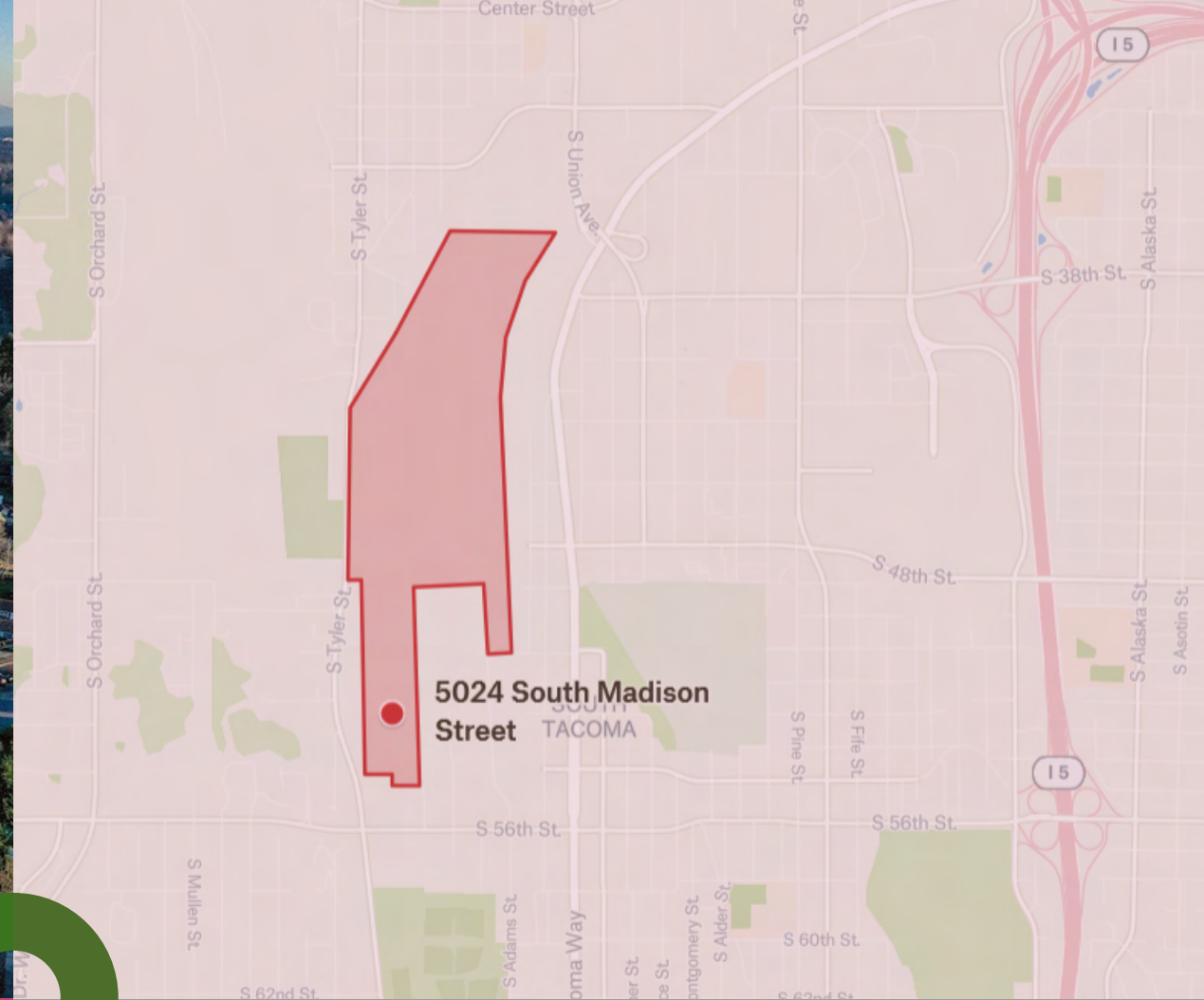
### OPPOSITION TO DELAY

As more residents are made aware of the project, more and more voices have come together to delay the project. Michelle Mood reached out EarthJustice for legal representation.



### CURRENT POSITION

The Pierce County Hearing Examiner upheld the Determination of Mitigated Non-Significance. Now, we are angrier than ever but the law is stacked against us.



*Photo Courtesy of Michelle Mood*

# HISTORY OF SOUTH TACOMA WETLAND

## BEFORE COLONIZATION

- Vast Prairie and Marshlands
- Seasonal Wetlands
- Elk Hunting
- Aquifer

## COLONIAL DEVELOPMENT

- Rail road
- Air Field
- Auto Shops
- Metal Recycling

## SINCE REMEDIATION

- EPA determined this a superfund site
- Invested millions into remediation
- Has remained vacant and stable the past 30+ yrs.

# NATURAL HISTORY OF THE SOUTH TACOMA WETLANDS

## REMNANT NATIVE OAK PRAIRIE WOODLANDS

**Before colonization, vast meadows and Oregon White Oak woodlands were maintained through time immemorial by Indigenous peoples.**

This space was also home to elk which sustained the lives of those who lived here

This site is a seasonal wetland, and was historically known as a “channel”



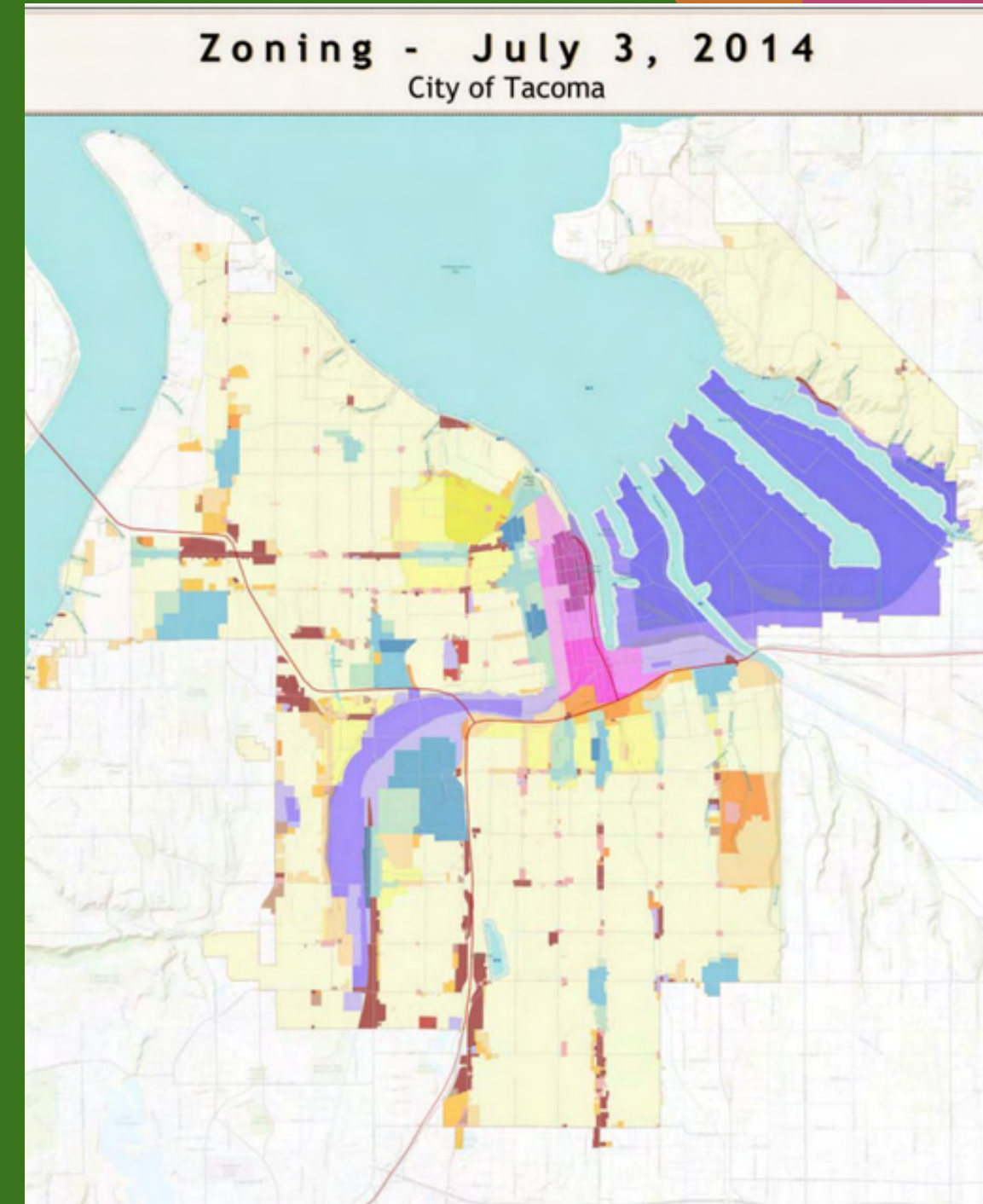
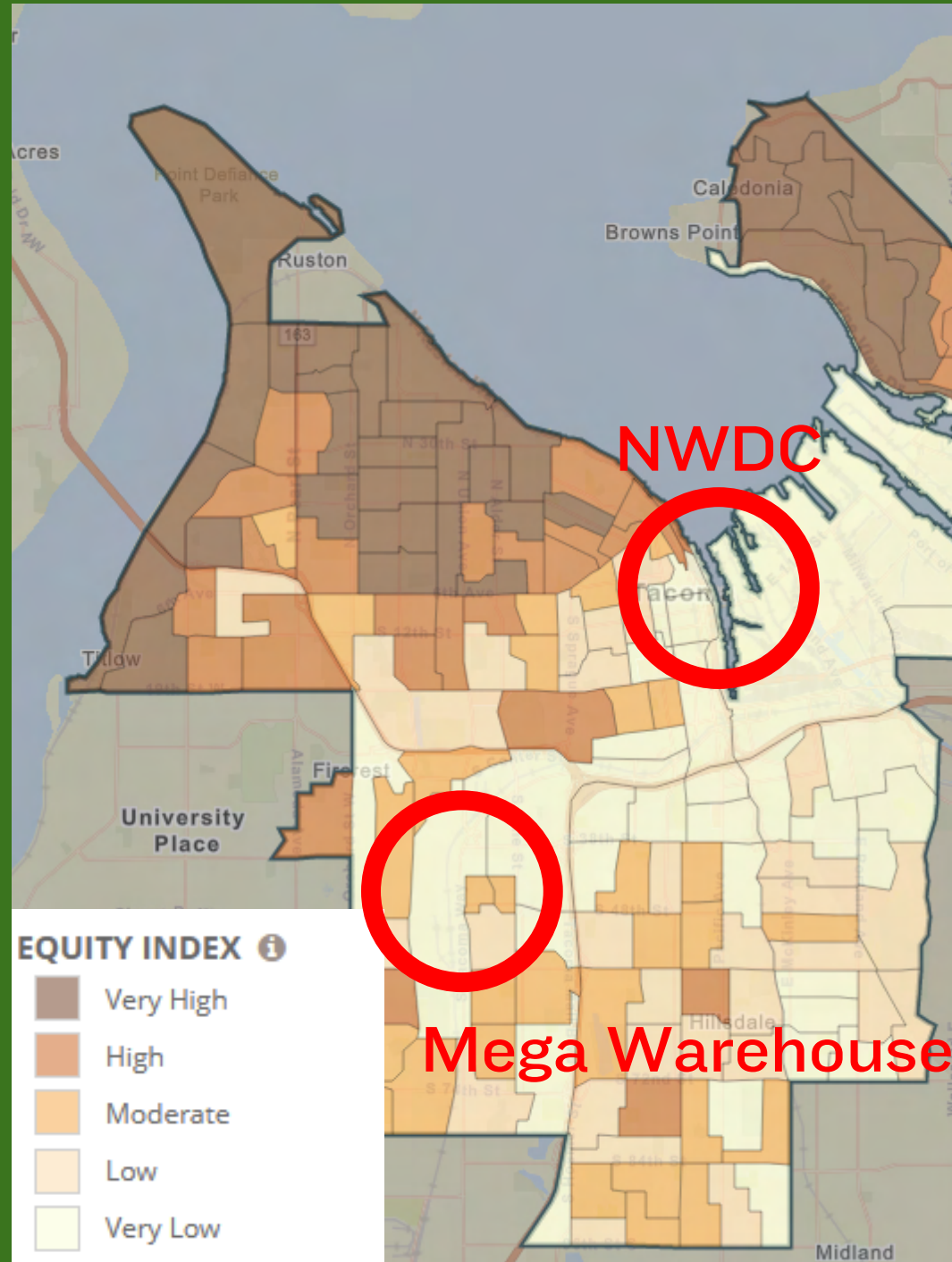


# HISTORY OF ZONING

The City of Tacoma created an Equity Index to help guide the city to make more equitable choices. This neighborhood has the lowest equity score in all of Tacoma.

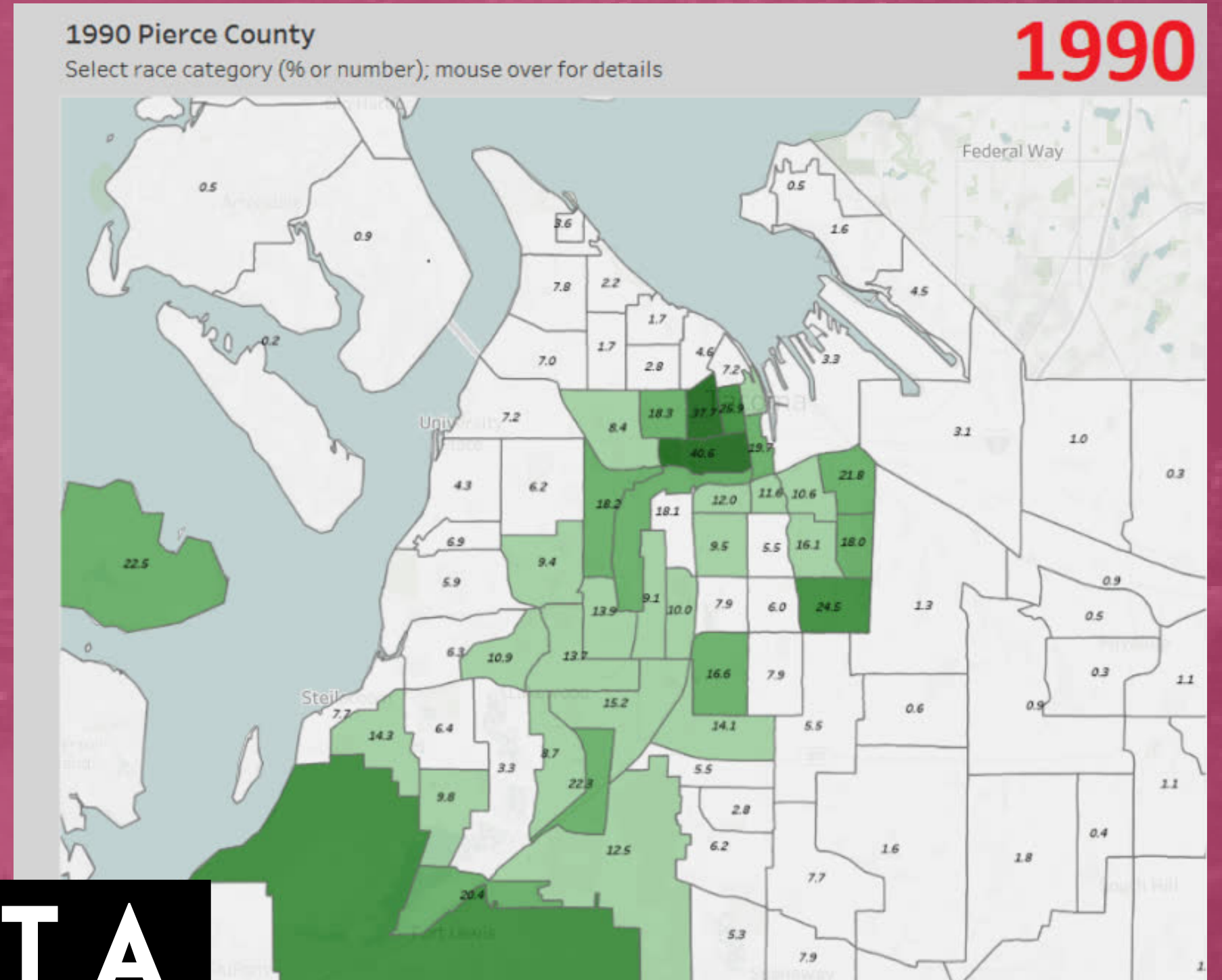
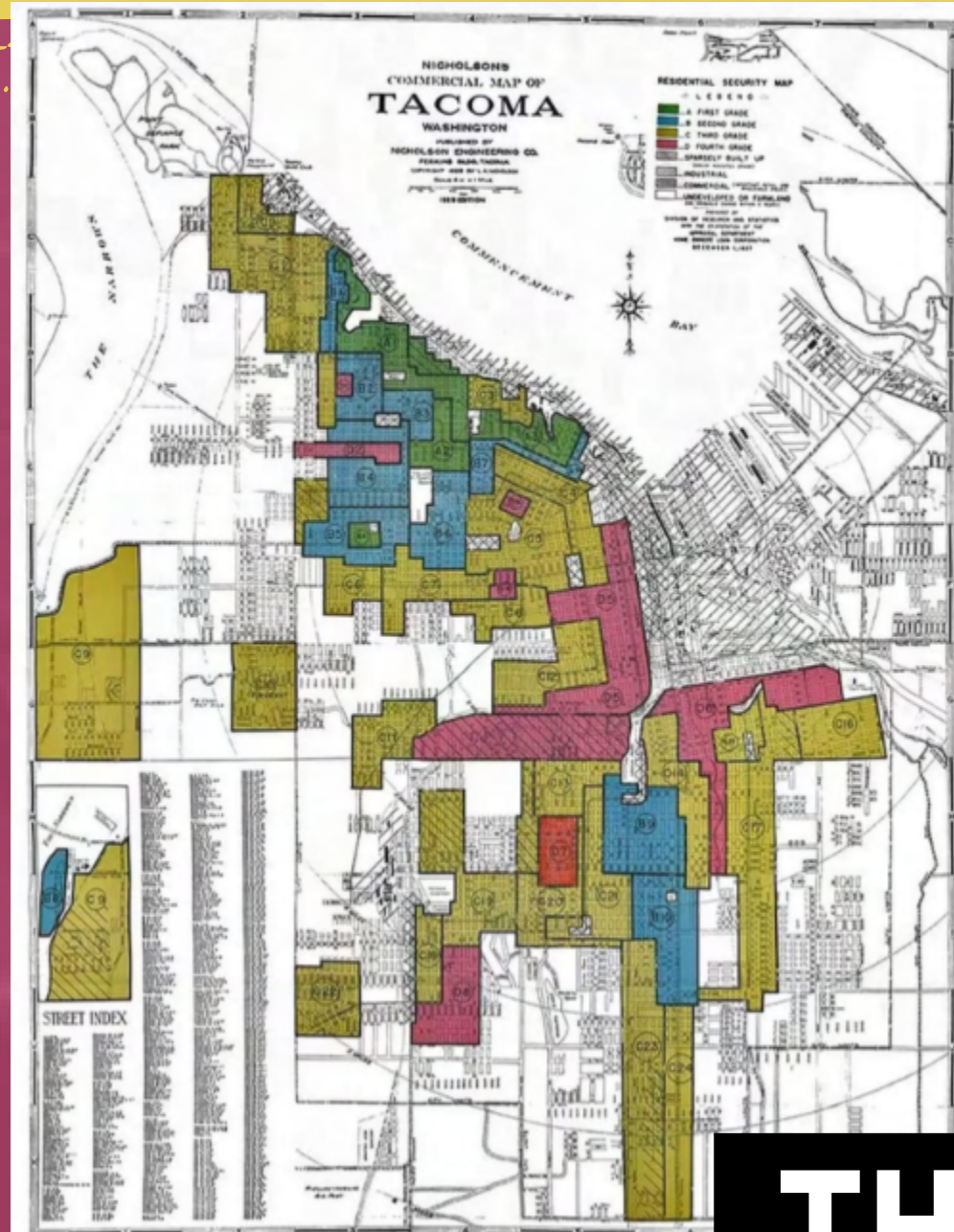
The city, however, continues to retain outdated heavy industrial zoning from the 1950s.

There are residential zoning areas on 3 bordering sides of the wetland site.



# SOUTH TACOMA DEMOGRAPHICS AND REDLINING

## BLACK POPULATION OF TACOMA OVER TIME

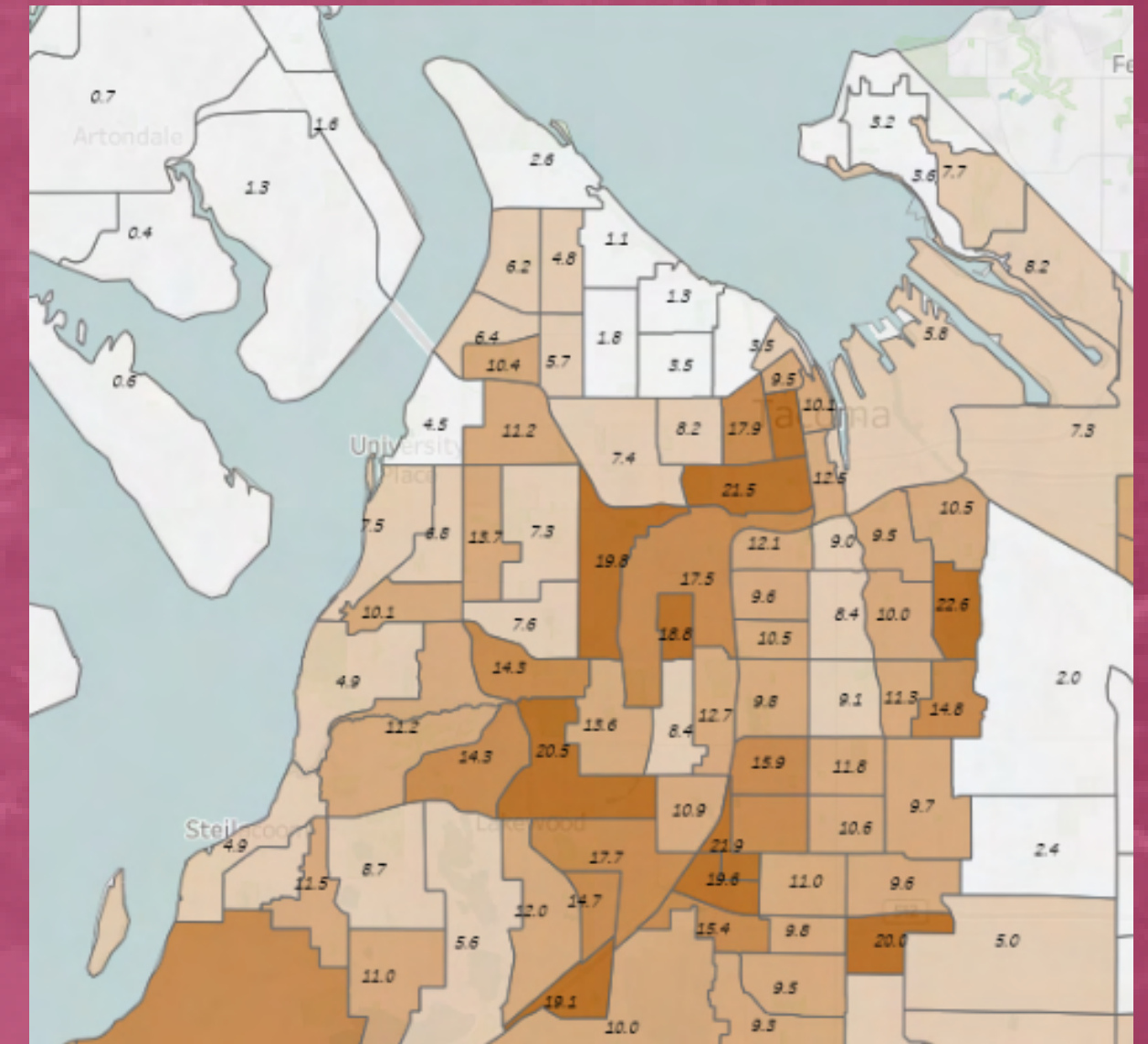
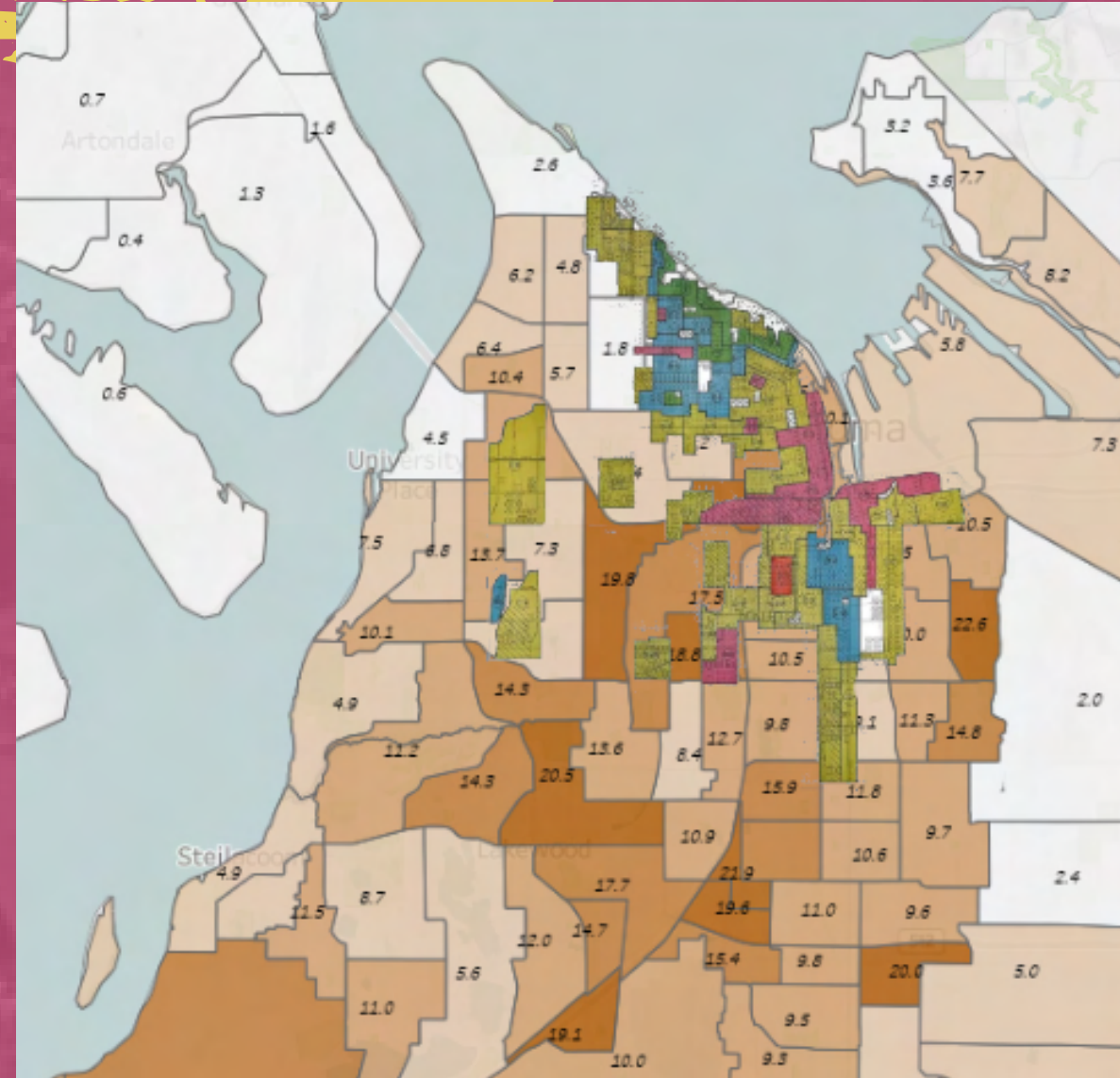
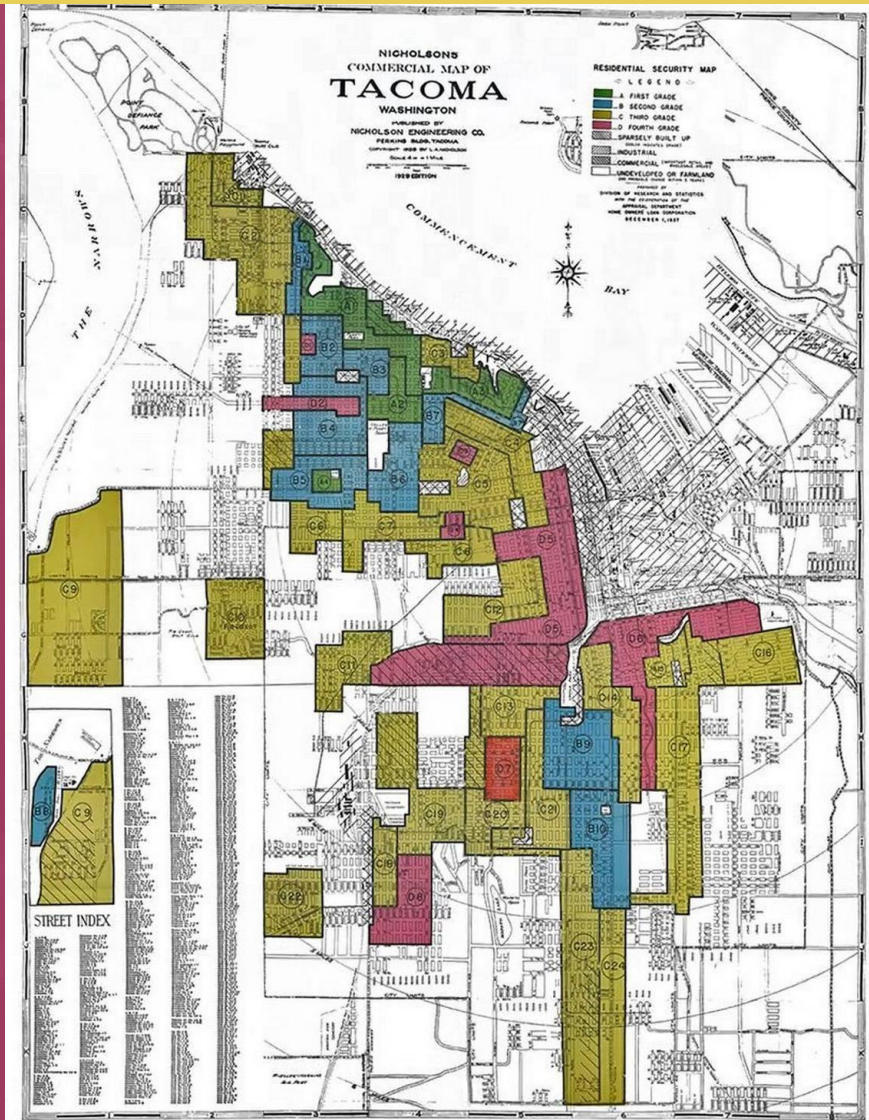


**THIS IS NOT A  
COINCIDENCE**

# SOUTH TACOMA

## DEMOGRAPHICS AND REDLINING

### HISTORIC REDLINING MAP



# LEGACY OF RACISM

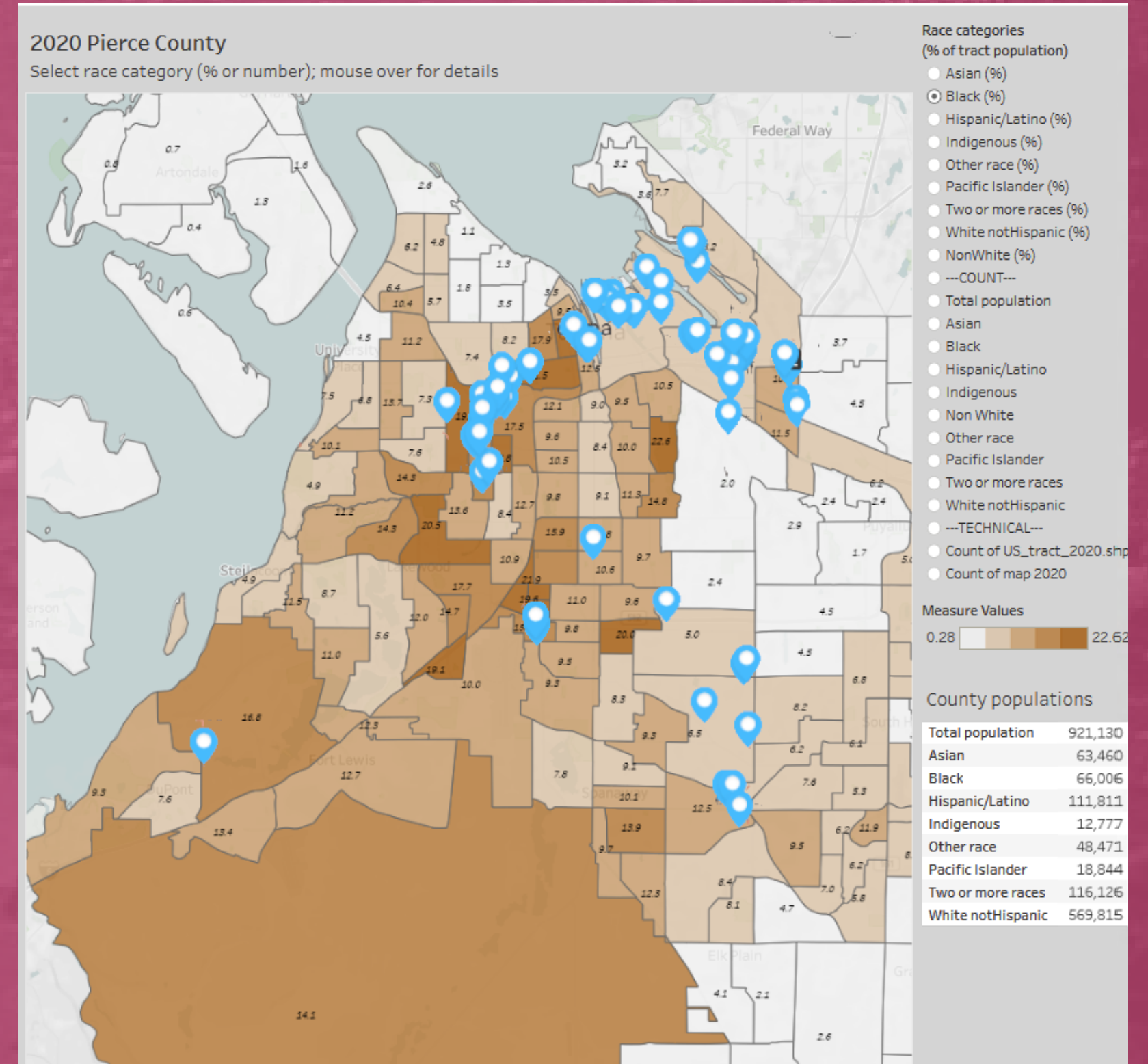
# SOUTH TACOMA DEMOGRAPHICS AND REDLINING

## BLACK POPULATION OF TACOMA 2023 OVERLAYED WITH WAREHOUSE LOCATIONS

### OFFLOADING POLLUTION ONTO BLACK AND BROWN NEIGHBORHOODS

- There is no public database of warehouse locations.
- The blue marks are warehouses that are available to lease.
- There are more warehouses than this.

**TACOMA DOESN'T NEED MORE  
WAREHOUSES! WE NEED AN END TO  
ENVIRONMENTAL RACISM!**



# SOUTH TACOMA

## ECONOMIC IMPACTS

**ALTHOUGH ECONOMIC DEMANDS EXIST AS A VALID PRESSURE, MULTIPLE STUDIES SHOW THE KINDS OF JOBS CREATED BY WAREHOUSES ARE BOTH UNSUSTAINABLE AND HIGHLY DANGEROUS**

- 37% turn over rate, compared to 13% average across all industries - the larger the warehouse, the higher the turn over rate
  - Some report turnover rates as high as 100.9%
- Average warehouse worker in Washington only makes \$18 per hour
- Transportation and warehousing, wholesale trade, and manufacturing hold 3 of the 5 highest death rates per 100,000 workers
- Warehouse workers have the highest injury and illness rate involving days away from work per 10,000 workers, which means workers are experiencing long term chronic injuries due to the nature of their work

**THESE ARE NOT THE KIND OF JOBS SOUTH TACOMA NEEDS!**

# SOUTH TACOMA

## ECONOMIC IMPACTS

- The number of created jobs will probably be low.
- Automation is employed in modern warehouses.
- This warehouse could be leased to anyone - but it will likely be Amazon.



**DEVELOPMENT DOESN'T HAVE TO BE BAD. BUT THIS IS.**

# SOUTH TACOMA

## ECONOMIC IMPACTS

### **LOCAL UNIONS DO NOT SUPPORT THIS WAREHOUSE!**

The Teamsters No 28 are opposed to this proposed warehouse complex as well as United Food & Commercial Workers Local 367.

There are good union warehouse jobs in the port. Moving non-union warehouse jobs inland is a deliberate attempt to weaken unions.

This is a known strategy often used by greedy corporations.

**BAD FOR LABOR – BAD FOR US!**

# SOUTH TACOMA

## ECONOMIC IMPACTS

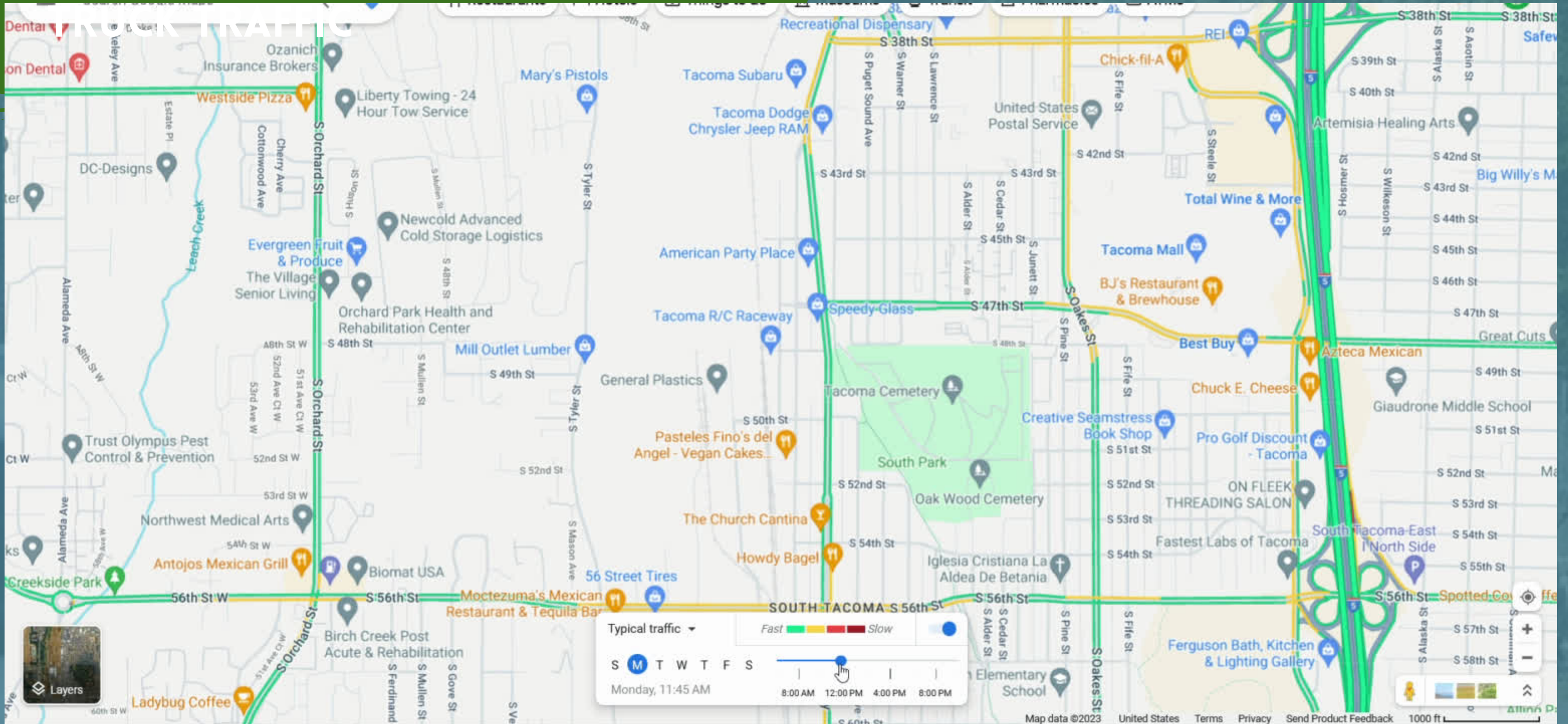
**IF YOU ARE IN A UNION, URGE THEM TO SPEAK OUT  
AGAINST THE WAREHOUSE.**

**YOUR TEAMSTER AND UFCW BROTHERS, SISTERS, AND  
SIBLINGS ALREADY HAVE.**



# SOUTH TACOMA

Take special note of 56th Street and 38th Street



These streets are already congested most of the day - an additional 10,000 trips per day by 18-wheeler trucks and other vehicles will only worsen South Tacoma's traffic problem!

# SOUTH TACOMIA

## WHAT CAN WE DO?

Let our local traffic authorities know that we do NOT want massive 18 wheeler trucks clogging up our roads!



[File a complaint with the Puget Sound Clean Air Agency.](#)

# TYPES OF POLLUTION FOUND ON SITE

## AIR POLLUTION

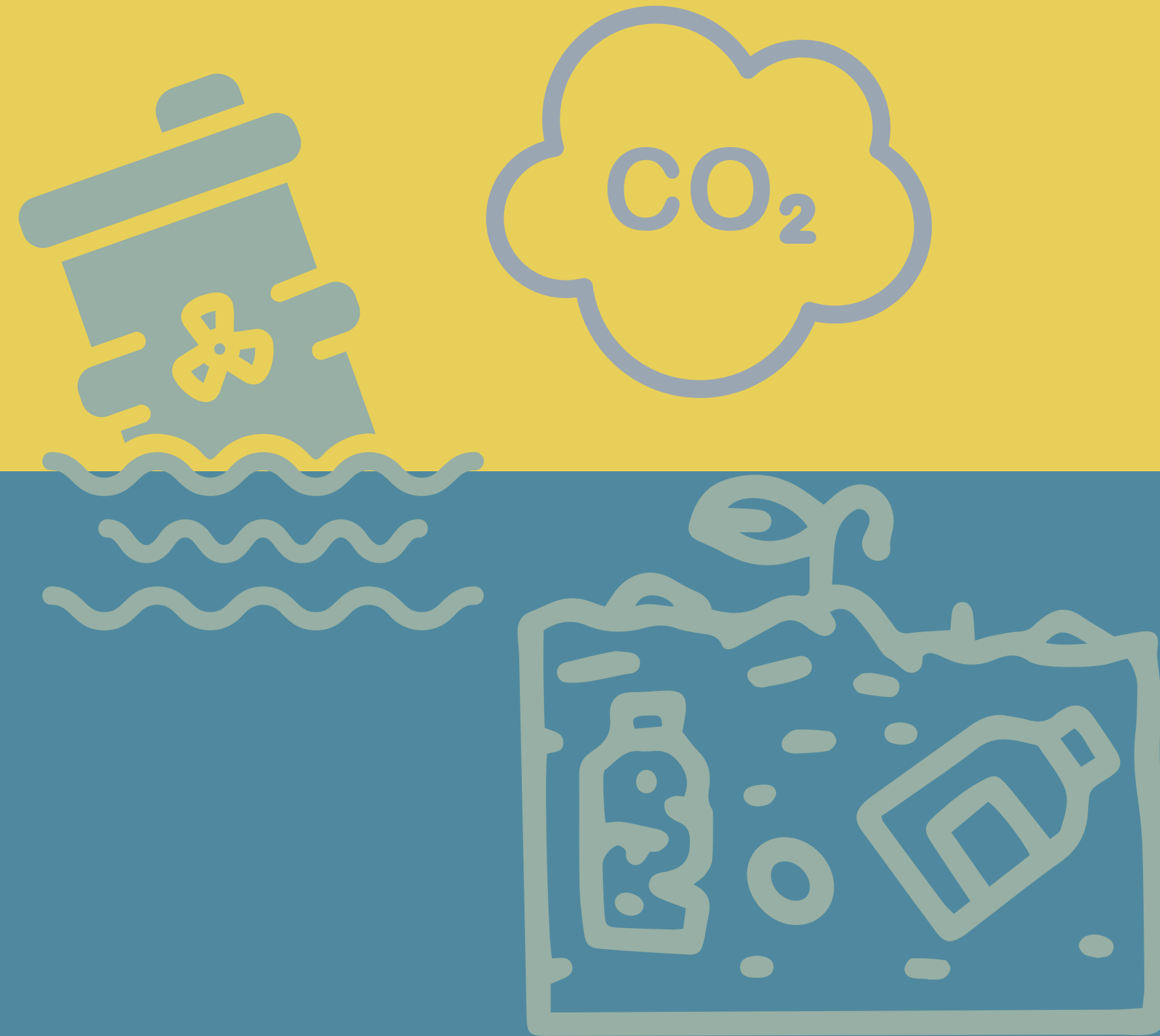
Excessive car exhaust and volatile compounds released from chemicals in the soil.

## WATER POLLUTION

contaminants of concern in groundwater were trichloroethane, naphthalene, benzene, toluene, ethylbenzene, and xylene

## SOIL POLLUTION

In 1990, three old Burlington Northern underground storage tanks (USTs) were found during Pioneer's parking lot expansion. Pioneer removed those tanks. Contamination from these USTs was visible in soil and groundwater during tank excavation.



# SOUTH TACOMA

## AIR POLLUTION AND HEALTH

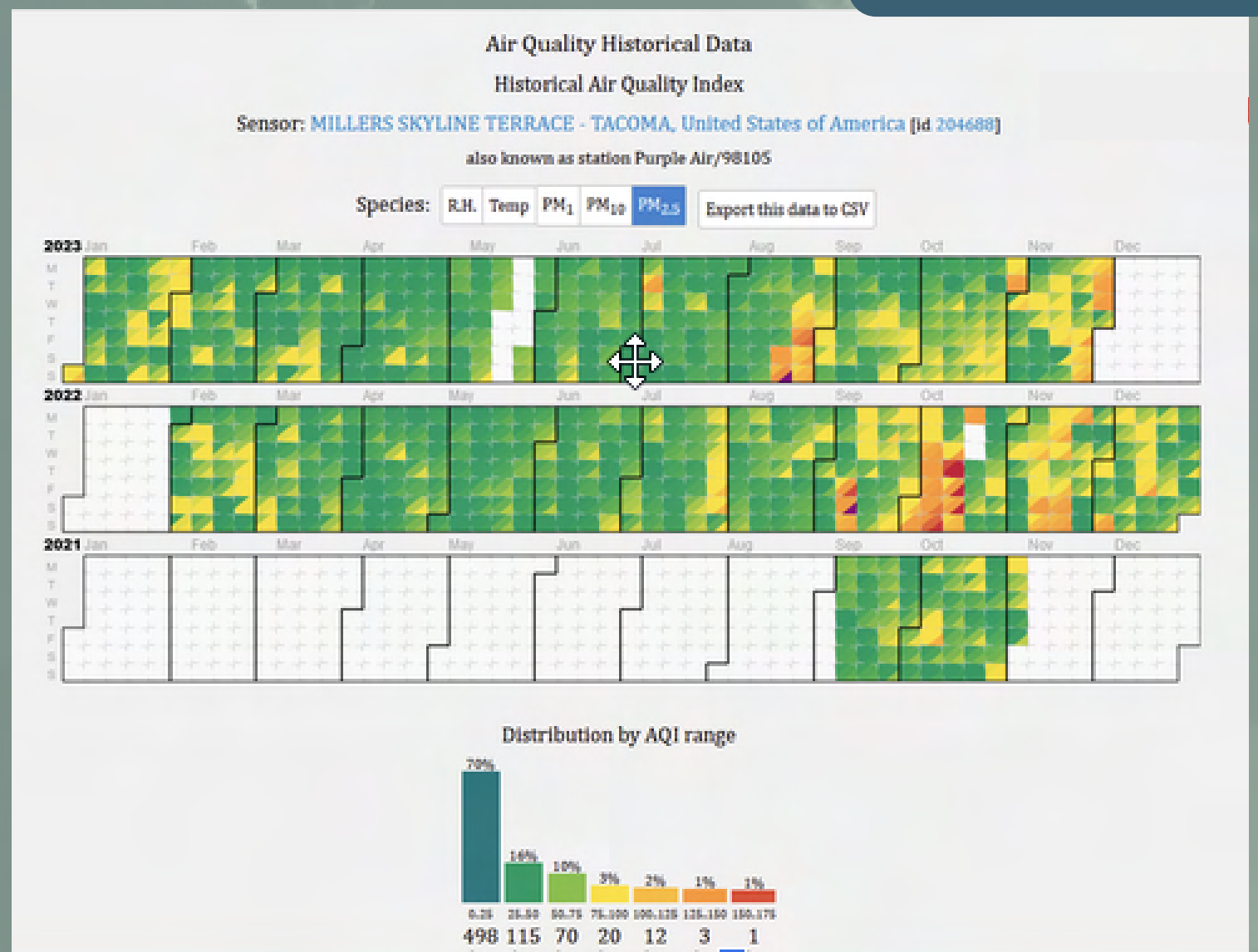
- Warehouses bring increase Diesel truck traffic
- Diesel trucks emit PM2.5 particles and NO2 - especially when starting, idling, or moving slowly
- This pollution is very localized in the short term - a truck route in a city can have 3.6x more NO2 than surface streets
- Long term exposure of NO2 is seriously linked with negative respiratory effects like Asthma
- Asthma is the leading cause of missed school
- Truck pollution is associated with premature births, heart disease, stroke, and dementia

**BLACK CHILDREN ARE  
8X MORE LIKELY TO  
DIE FROM ASTHMA  
THAN THEIR WHITE  
COUNTERPARTS**

# SOUTH TACOMA

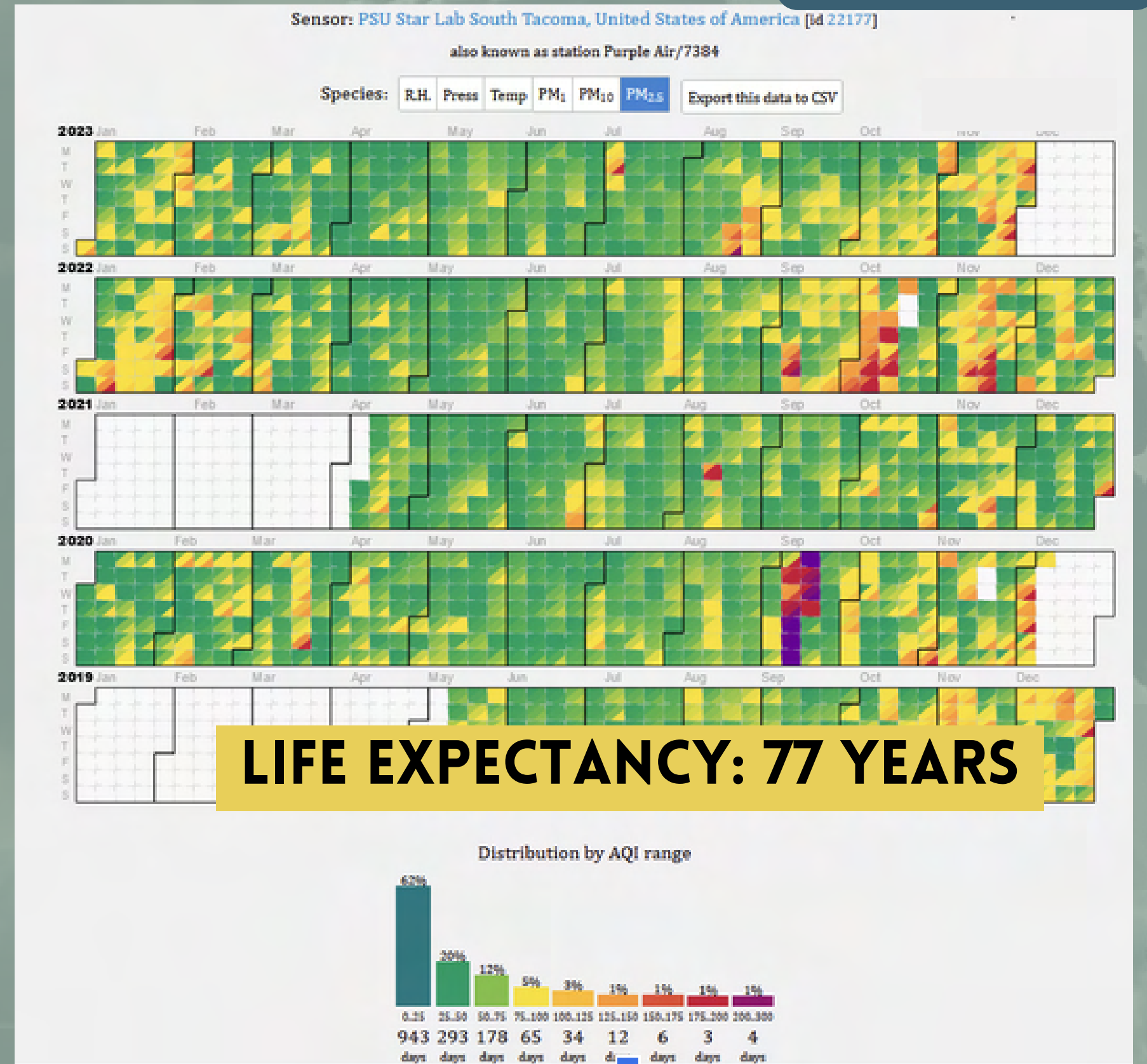
## AIR POLLUTION AND HEALTH

**WEST END**



**LIFE EXPECTANCY: 82 YEARS**

**SOUTH END**



# SOUTH TACOMA

## AIR POLLUTION AND HEALTH

### BLACK POPULATION OF TACOMA 2023

#### WEST END

82 YEARS - 6.2% BLACK

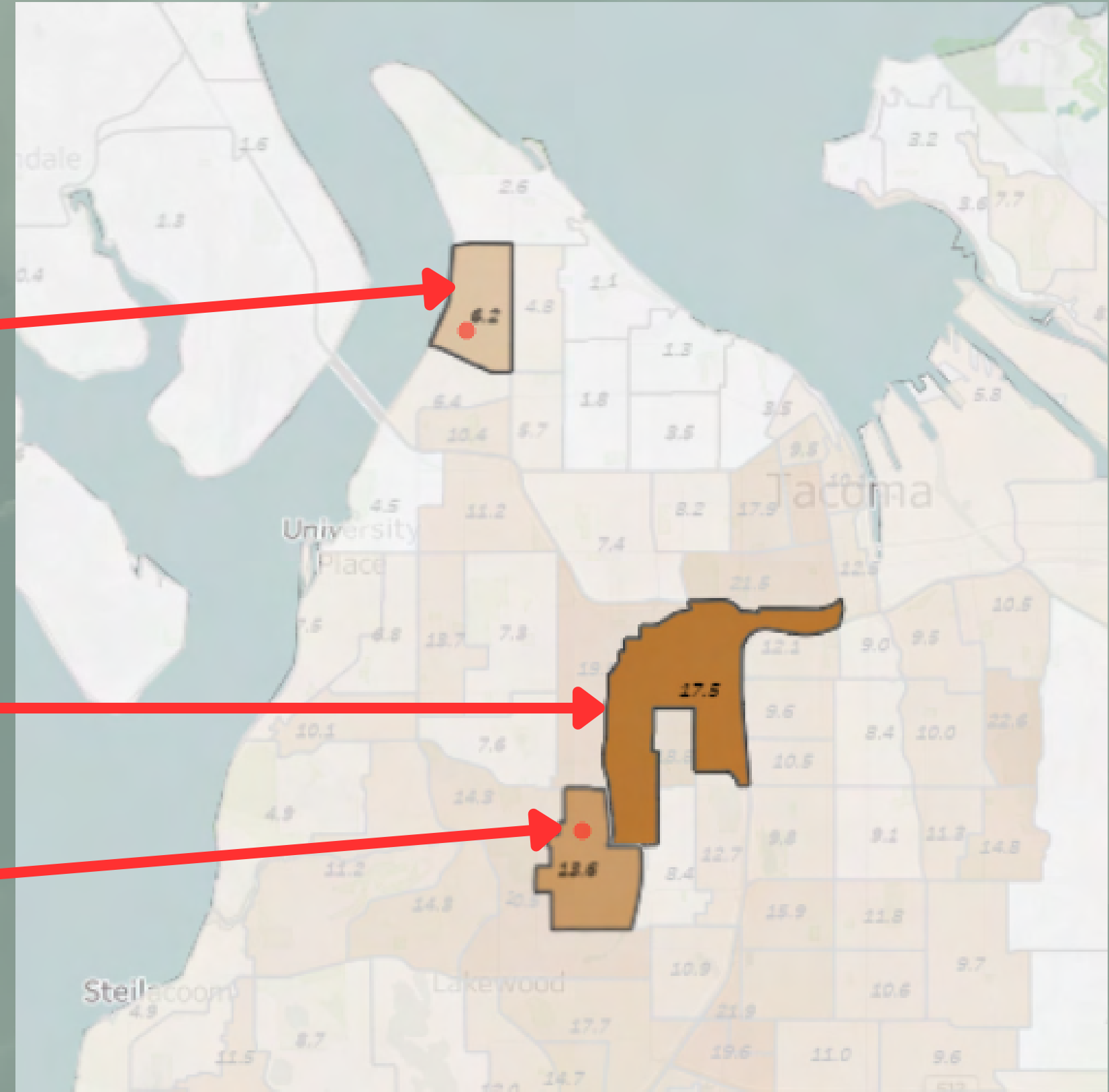
#### SOUTH END:

WAREHOUSE PLOT:

71 YEARS - 18% BLACK

NEAREST AIR MONITOR:

77 YEARS - 13.6% BLACK



**THE CITY'S RACIST POLICIES ARE ROBBING PEOPLE OF 10 YEARS OF LIFE**

# SOUTH TACOMA

## AIR POLLUTION AND HEALTH

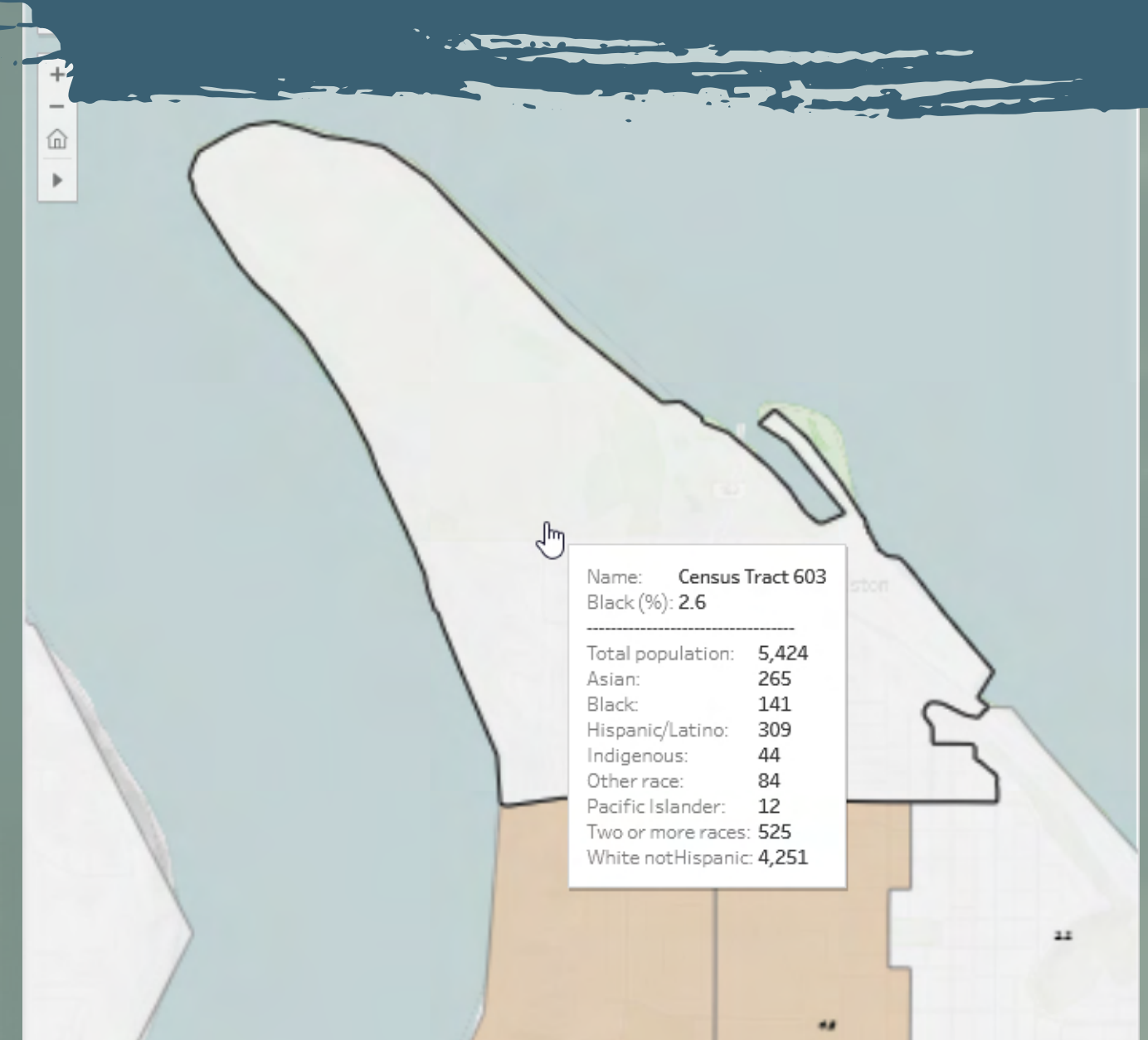


CIRCA MID 1900'S



2021

### DUNE PARK



**SPECIAL SHOUT OUT TO THE OTHER SUPER FUND SITE IN 2.6% BLACK NEIGHBORHOOD**

# SOUTH TACOMA

## AIR POLLUTION AND HEALTH

WHEN NO<sub>2</sub> AND PM<sub>2.5</sub> PARTICLE CONCENTRATION DECLINES, SO DO LEVELS OF ASTHMA. STOPPING THIS MEGA WAREHOUSE WILL PROTECT THE LIVES AND FUTURES OF ALL OF US

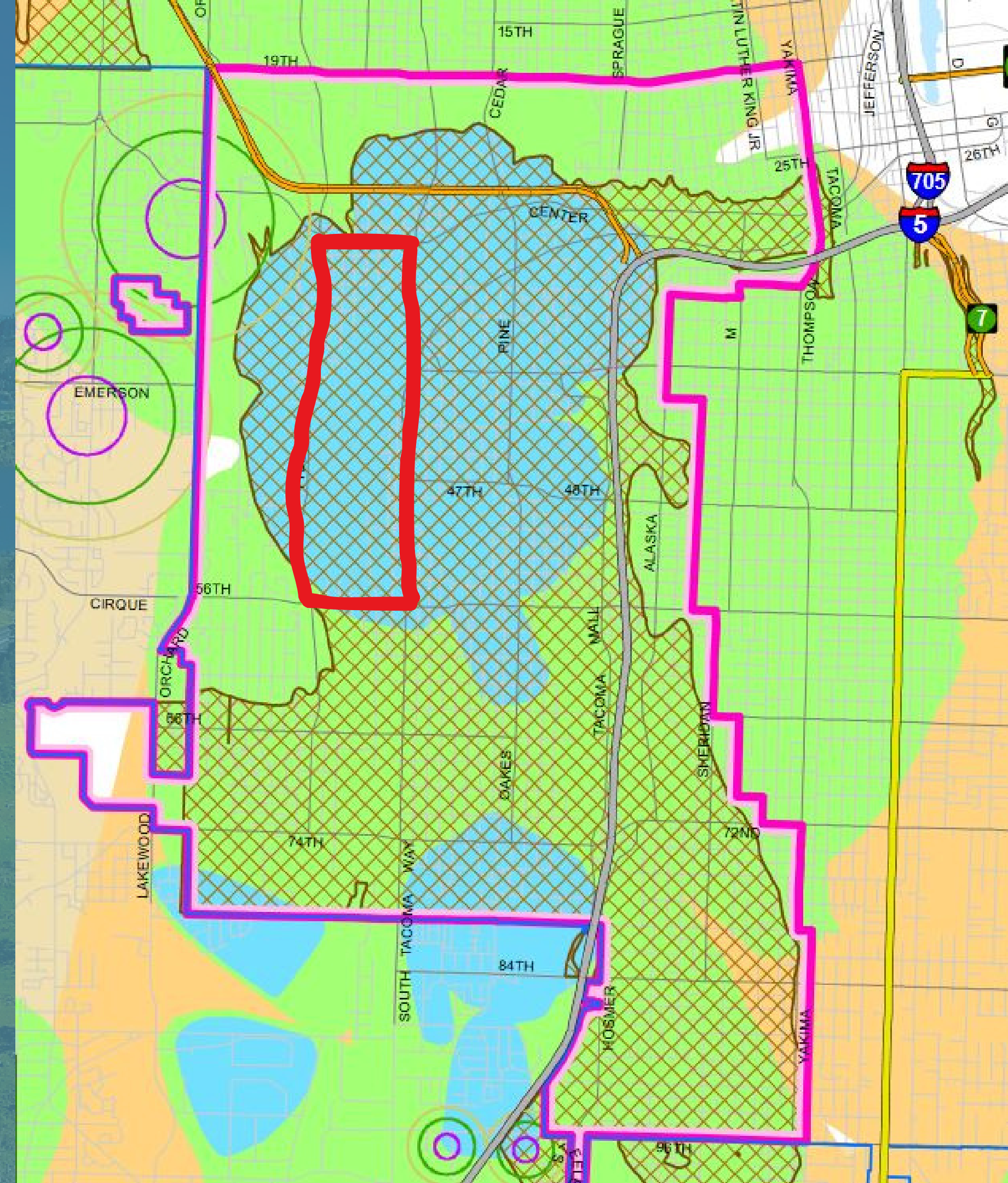
**WE CAN PREVENT MORE POLLUTION!**

**WE CAN PREVENT MORE ASTHMA!**



# SOUTH TACOMA WATER POLLUTION

The aquifer in South Tacoma had an overlay code required by the EPA in the 1980s to protect our back-up drinking water and its recharge supply; however, the city's current "South Tacoma Groundwater Protection District" allows for "exceptions" and has not been updated to modern day best science.



# AQUIFER

Aquifers are areas of underground porous rocks saturated with water.

As it rains, the aquifer is “recharged,” it naturally filters rain water before it discharges into the Sound.



Wells can be built to harvest water from aquifers. This aquifer supplies about 5% of our city’s yearly drinking water. In the summer months, this aquifer may supply up to 40% of the city’s drinking water.

# DRINKING WATER

The glaciers that feed the Green River, which provides our main source of drinking water, continue to dwindle. We will need to rely on our ground water more and more each year.



**WE CAN PROTECT  
THIS AQUIFER BY  
STOPPING THE  
MEGA  
WAREHOUSE!**



# SOUTH TACOMA

## OUR ENEMIES

### BRIDGE INDUSTRIAL

#### FOR PROFIT

Bridge Industrial is a “real estate operating company and investment manager focused on the development and acquisition of industrial properties in supply-constrained core markets.”

#### AGAINST THE PLANET

Bridge Industrial pretends to care about sustainability, but their actions prove the only thing they want to sustain is their corporate greed.

#### “INVESTING IN COMMUNITIES”

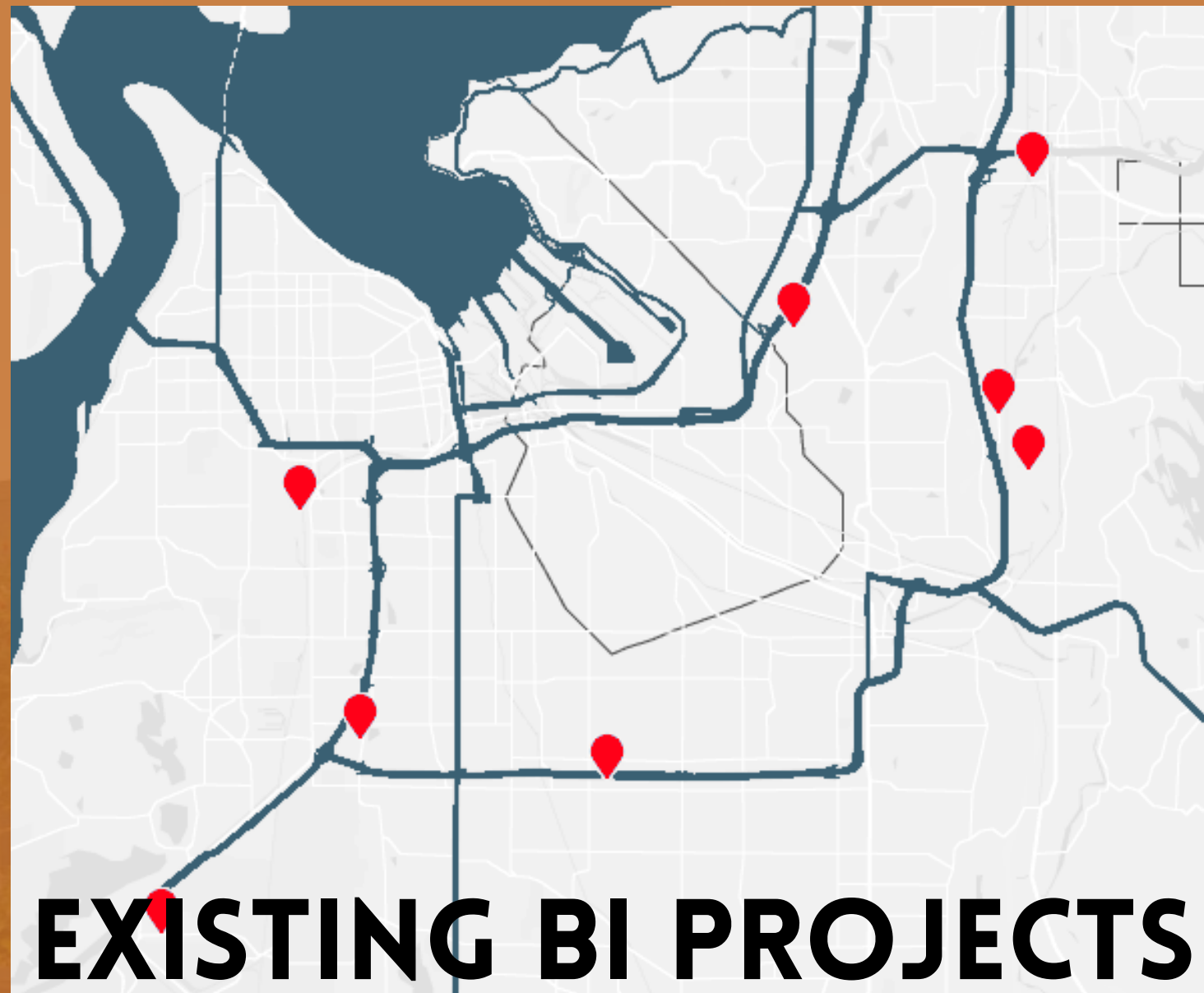
They want to build a warehouse in our neighborhood, worsening our lives and health, and have the audacity to pretend like they’re helping us.

# SOUTH TACOMA

## OUR ENEMIES

**BRIDGE INDUSTRIAL**

**ON THEIR WEBSITE THEY BRAG ABOUT WHAT AN AWESOME LOCATION OUR NEIGHBORHOOD IS FOR A WAREHOUSE**



**FREEWAY ACCESS**

TO INTERSTATE 5  
**1 mile**  
**4 minutes**

TO PORT OF TACOMA  
**5 miles**  
**10 minutes**

TO WA-16  
**1 mile**  
**3 minutes**

**HIGHLIGHTS**  
Conveniently located just 5 miles from the Port of Tacoma, Bridge Point Tacoma 2MM offers excellent exposure with direct access to Interstate 5

**BRIDGE POINT TACOMA 2MM**

**PRIMARY TRUCK ACCESS**

**SECONDARY NON-TRUCK ACCESS**

**SECONDARY NON-TRUCK ACCESS**

**SECONDARY NON-TRUCK ACCESS**

**SECONDARY NON-TRUCK ACCESS**

**SECONDARY NON-TRUCK ACCESS**

bridgepointtacoma2mm.com | 5802 S Burlington Way | Tacoma, WA

This information supplied herein is from sources we deem reliable. It is provided without any representation, warranty, or guarantee, expressed or implied as to its accuracy. Prospective Buyer or Tenant should conduct an independent investigation and verification of all matters deemed to be material, including, but not limited to, statements of income and expenses. Consult your attorney, accountant, or other professional advisor.

**km Kidder Mathews**

**AND EAGERLY CUT UP OUR CITY INTO "THE BEST TRUCK ROUTES"**

# SOUTH TACOMA

## OUR ENEMIES

**CITY OF TACOMA**

FROM THE CITY OF TACOMA WEBSITE:

**“[THE WAREHOUSE] IS NOT LIKELY TO HAVE  
A SIGNIFICANT ADVERSE IMPACT ON THE  
ELEMENTS OF THE ENVIRONMENT THAT ARE  
REVIEWED UNDER SEPA”**

**THIS BLATANT LIE WILL COST PEOPLE THEIR LIVES.**

# SOUTH TACOMA

## OUR ENEMIES

### CITY OF TACOMA

**TACOMA ALSO CLAIMS IT WILL REQUIRE BI TO “COMPLETE RESTORATION, ENLARGEMENT, AND ENHANCEMENT OF THE WETLANDS AND STREAM”**



**A TINY SLIVER OF GREEN IS NOT “ENHANCING” THE WETLANDS**

**TACOMA APPROVES DEVELOPMENT PROJECTS 3X FASTER THAN SEATTLE.**

# SOUTH TACOMA

## OUR ENEMIES

### COUNTY CHAMBER

"THERE IS NOT A LOT OF UNDEVELOPED LAND AVAILABLE ANYWHERE, QUITE FRANKLY, IN THE STATE OF WASHINGTON, YOU KNOW, FOR MANUFACTURING, FOR ADVANCED MANUFACTURING, FOR INDUSTRIAL USE. AND SO THAT'S ONE OF THE REASONS WHY, YOU KNOW, IT WENT AT SUCH A, SUCH A PREMIUM,"

--ANDREA REAY  
PRESIDENT AND CEO OF THE TACOMA-PIERCE COUNTY CHAMBER

**FALSE**

### ACTUALLY,,,

- BASED ON A VERY BRIEF GOOGLE SEARCH THERE IS AT LEAST 2,810 UNDEVELOPED ACRES OF LAND IN PIERCE COUNTY ALONE
- MOST OF THAT LAND ISN'T CONVENIENTLY IN UNDESERVED NEIGHBORHOODS THAT ALLOW FOR MAXIMUM PROFIT

**ANDREA REAY IS EITHER BLATANTLY LYING OR IGNORANTLY WRONG - EITHER WAY HER STATEMENT BETRAYS AN INCREDIBLE NEGLIGENCE FOR OUR LIVES AND OUR COMMUNITIES**



# SOUTH TACOMA

## OUR ENEMIES

### COUNTY CHAMBER

**"WE CAN'T MAKE IT INTO A PARK. AGAIN, WE TALKED A LITTLE BIT ABOUT THE ENVIRONMENTAL REMEDIATION, WE TALKED ABOUT HOW IT'S ZONED FOR HEAVY INDUSTRIAL, IT'S NOT ZONED FOR RECREATION, IT IS NOT ZONED, YOU KNOW, FOR RESIDENTIAL. IT IS ZONED FOR HEAVY INDUSTRIAL,"**

**--ANDREA REAY**

**PRESIDENT AND CEO OF THE  
TACOMA-PIERCE COUNTY CHAMBER**

**I INVITE YOU ALL  
TO REMEMBER  
DUNE PARK**

**INDUSTRIAL ZONING DOESN'T FALL FROM THE SKY. IT IS NOT A METAPHYSICAL REALITY OF A PIECE OF LAND. IT IS A DECISION MADE BY THE CITY AND IT CAN BE CHANGED BY US.**

# **SOUTH TACOMA**

## **OUR ENEMIES**

### **COUNTY CHAMBER**

**“THE TACOMA-PIERCE COUNTY CHAMBER’S MISSION IS TO MAKE THE SOUTH SOUND THE MOST EQUITABLE AND INCLUSIVE PLACE TO DO BUSINESS IN WASHINGTON STATE.”**

**--ANDREA REAY**

**PRESIDENT AND CEO OF THE TACOMA-PIERCE COUNTY CHAMBER**

**HYPOCRITE OR LIAR? YOU DECIDE.**

# SOUTH TACOMA

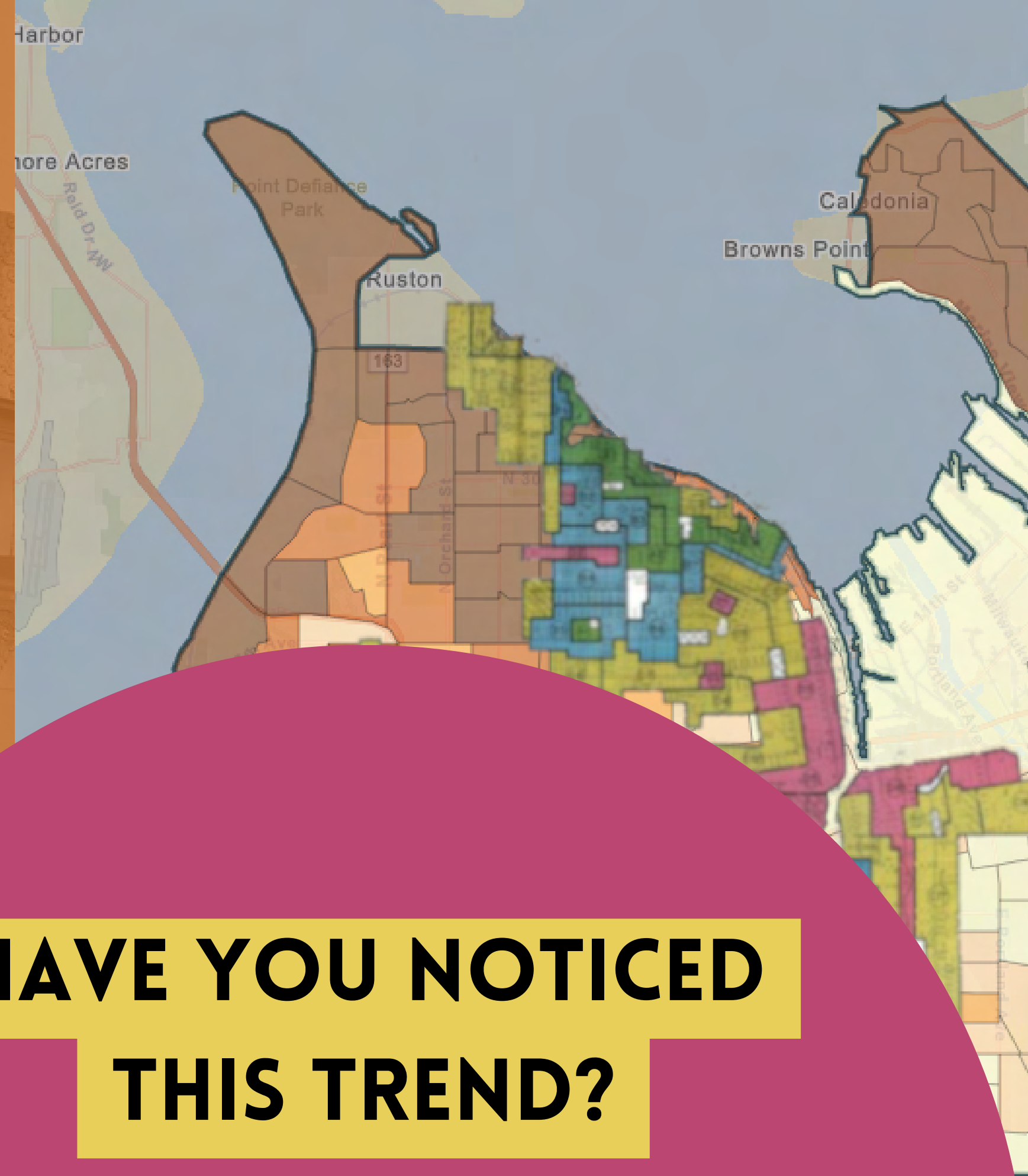
## OUR ENEMIES

### THEIR TACTICS

# GREEN WASHING

misleading or deceptive  
publicity disseminated  
by an organization so  
as to present an  
environmentally  
responsible public  
image

**HAVE YOU NOTICED  
THIS TREND?**



# SOUTH TACOMA

## OUR ENEMIES

**THEY ARE NOT UNSTOPPABLE**

**WE CAN PUT PRESSURE ON BRIDGE INDUSTRIAL**

**WE CAN PUT PRESSURE ON THE CITY**

**WE CAN PUT PRESSURE ON ALL THE PEOPLE WHO CHEAPEN OUR LIVES IN THE NAME OF PROFIT!**

**WE CAN STOP THE MEGAWAREHOUSE!**



**WANNA STOP THE WAREHOUSE?**

**WANNA FIGHT ENVIRONMENTAL RACISM?**

**WANNA CLOSE THE NWDC?**

**GET INVOLVED!**

**ATTEND LA RESISTENCIA RALLIES!**

**CALL, EMAIL, AND ANNOY YOUR LOCAL OFFICIALS!**

**JOIN CASS TODAY!**

# GROUP PHOTO!

---



**STOP**  
**MEGA**



**SAVE**  
**OUR**



**SPECIAL  
THANKS TO:**

**The Conversation 253**

where talk is action



**← 350 TACOMA**

**LA RESISTENCIA**

**FRS<sup>★</sup>O**

*Freedom Road*

*Socialist Organization*



**...AND YOU!**