

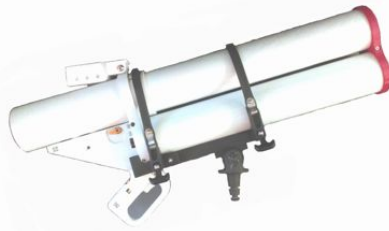
MK 4 Launcher & Payloads



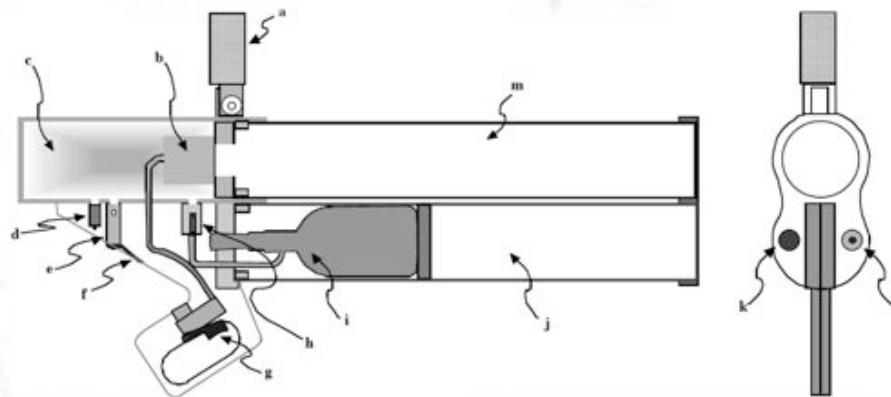
*"The First Responder's
Multi-Tool"*



Mk 4 Launcher



- The Mk4 is a versatile pneumatic launcher that expands first responders capabilities by being able to deploy a range of payloads over long distances.
- Designed specifically for use in a marine environment being constructed from anodized 6061 T6 Aluminum with a Carbon fiber barrel.
- The unique shooting position allows payloads to be deployed when braced against a boat structure or when seated. The unit naturally falls into the correct launch elevation.
- The accumulator has been hydro-tested to 1,100psi and operates at a pressure of 250psi.
- The unit has a built in HPA (high pressure air tank) that is charged from a SCUBA tank.
- Once charged can be fired three times in less than a minute.
- Disposable CO2 cartridges can be used with alternative charging line.
- The launcher can be pintle mounted



- | | | | |
|----|------------------------|----|-------------------------------|
| a) | Folding shoulder stock | h) | Charging valve |
| b) | Rapid exhaust valve | i) | HPA (high pressure air) tank |
| c) | Pressure accumulator | j) | Under barrel hopper |
| d) | Pressure indicator | k) | HPA pressure gauge |
| e) | Pressure relief valve | l) | HPA charging port |
| f) | Bleed down lever | m) | Barrel |
| g) | Trigger | | |

NAA
2-5

PROPRIETARY AND CONFIDENTIAL

SCALE 4:1

6061 T6 ALUMINUM

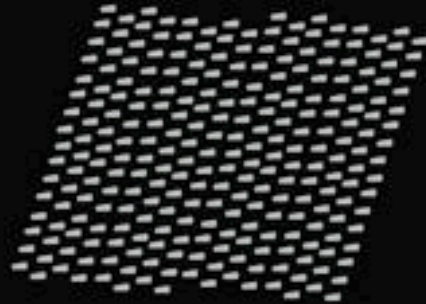
NAA
1-1
NAA

Multiple stand off tools can be deployed accurately over long ranges

**50 yard lifeline
with auto inflating collar**



**300 Cavitators
Jet drive disabler**



**Boat stopper
40 yard line with two drogues**



**Anti-swimmer grenade
ASG**



100 yard messenger line



Entanglement Net





Non-Compliant Boat Stopper

A shot across the bow will now take a boat off the plane.

The **Boatstopper**® provides a valuable step between spoken commands to stop and the use of lethal force.

Effectively a spike strip for the water.

The system consists of a floating 40 yard' UHMWPE (Dyneema or Spectra) line with sea anchors at both ends.

The floating line snags the lower unit of the boat, the sea anchors at either end inflate and create drag to slow the boat to walking pace in seconds.

Ideal for use against runaway boats or when the driver is incapacitated.

- 40 yard range allows safe stand-off
- Does not harm vessel or occupants
- Instantly deployable
- Works in all sea states



NASBLA can provide **Mk 4** training as part of the three day Pursuit and Stop course, recognized by the Department of Homeland Security



Entanglement Net

A hard stop capability is available with the 15 yard Entanglement net. Made from 8,000lbs breaking stain 1/4" Dyneema rope it is capable of jamming the prop of the most powerful motor boats.

The net is launched in a vinyl sleeve allowing instant reloading in the case of dealing with multiple targets.

Each loop is weighted to form a curtain in the water.

The net rapidly self sets after deployment.



Note : This system will probably result in permanent damage to the motor and consideration should be taking with it's use against civilian targets.

Jet Drive Disabler

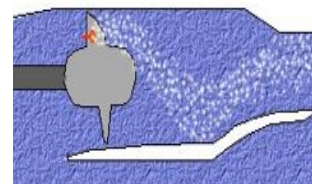
The jet drive disabler consists of 300 Cavitator[®] sub-munitions deployed in the path of a non-compliant jet driven vessel.

The Cavitators are sucked into the jet drive unit where they impact the impeller, deform around it and cause massive cavitation.

The foam float is starch based and 100% bio-degradable. The core is low carbon steel which rapidly rusts away.



- Easy to deploy in path of personnel water craft
- Ingested even at full speed
- Reduce speed and steering ability
- Fully bio-degradable
- Causes no lasting damage to vessel



Rescue Life Line

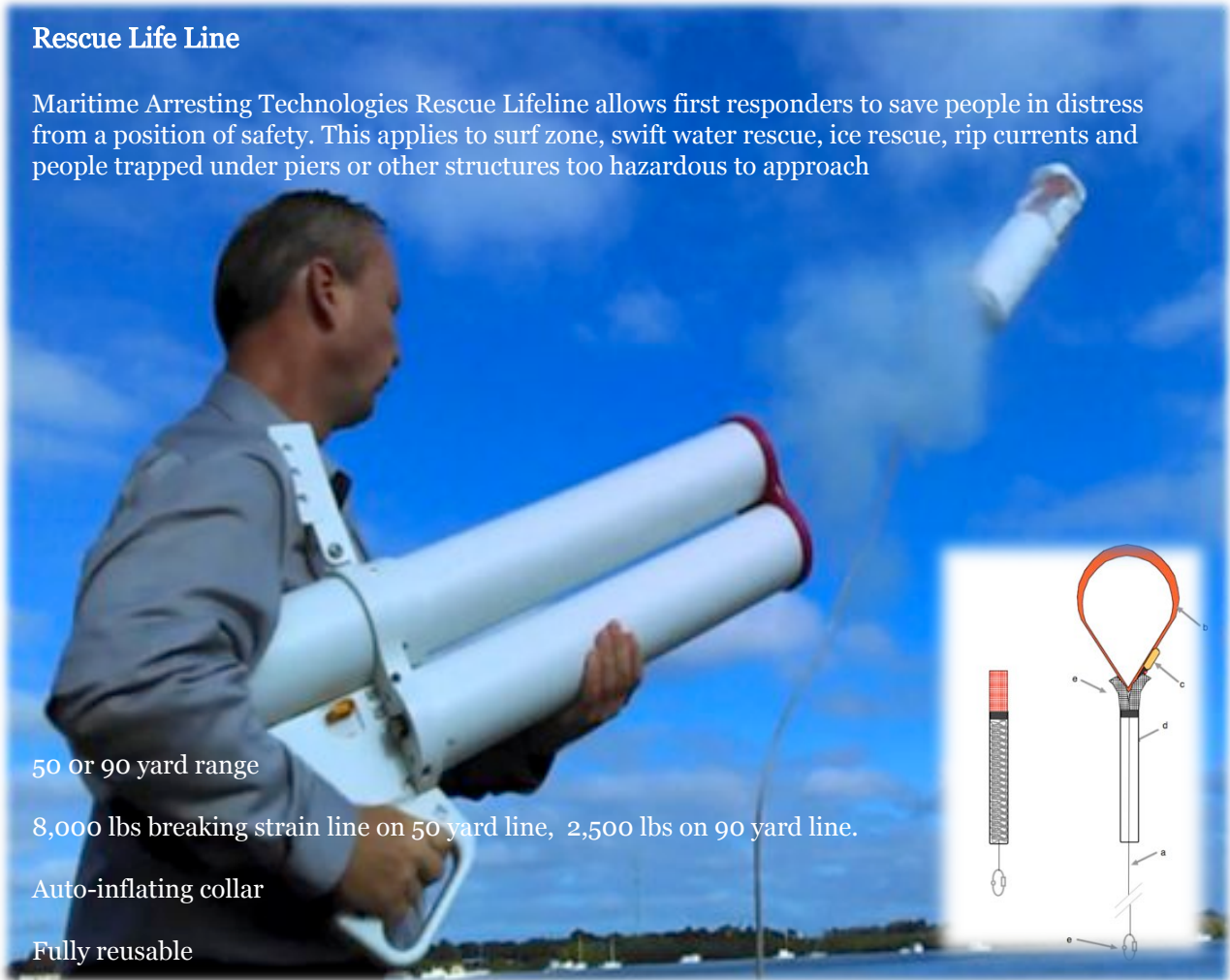
Maritime Arresting Technologies Rescue Lifeline allows first responders to save people in distress from a position of safety. This applies to surf zone, swift water rescue, ice rescue, rip currents and people trapped under piers or other structures too hazardous to approach

50 or 90 yard range

8,000 lbs breaking strain line on 50 yard line, 2,500 lbs on 90 yard line.

Auto-inflating collar

Fully reusable



Line Launcher

The line launcher is a canister that can deploy 100 yards of high strength line. Ideal for use in ship to ship, ship to shore line throwing or for swift water rescues.

1,700lbs breaking strain line



MK4 SPECIFICATIONS

The MK4 launcher is designed to be easy to hold either sitting or braced in a standing position. It is intended to deploy only the factory payloads described below.

The Mk4 system consists of:

1. Mk4 Pneumatic launcher
2. Charging line fits to k-valves (SCUBA tank). A DIN adapter can be provided.
3. Ballistic nylon soft carrying case
4. Owners manual

MK4 launcher

Length	35.5"	90cm
Height (stock folded)	17.5"	44.5cm
Height (stock open)	20.5"	52cm
Width	5"	12.5cm
Barrel caliber	3.9"	9.9cm
Weight	19 lbs.	8.6 kg
Accumulator	Aluminum 6061 T6 Hydro tested to 1,100psi	
Barrel	Filament wound Carbon Fiber	
Under barrel	Fiberglass	
HP Air tank	35cu inch rated at 3,000psi	

Payloads

Rescue Life Line

Launch shroud	Vinyl & PE foam with Velcro fastening	
Line	150' UHMWPE rated at 8,000lbs	
Inflatable harness	Nylon	
Auto-inflator	Halkey Roberts Alpha V90000	
CO2 Cartridge	12g	
Weight	2.2 lbs.	1 kg

Boat stopper

Launch shroud	PVC	
Line	120' UHMWPE rated at 8,000lbs	
Sea Drogues	2.5' nylon canopies with 316SS fittings	
Floats	Poly Ethylene	
Weight	4.3 lbs.	1.9kg kg

Jet drive disabler

Launch shroud (retained in launcher)	PVC	
Cavitator core	Low carbon steel	
Cavitator float	Starch foam	
Weight x 300	2.6lbs	1.2kg

Shot Line

Launch shroud	PVC	
Line	300' UHMWPE rated at 1,700lbs	
Weight	1.8lbs	0.8kg



www.boatstoppers.com

Maritime Arresting Technologies LLC
500 Anclote Road Unit B
Tarpon Springs FL 34689
+1 844 278 6787