



presents

## UNEARTHED

Opening Reception: Friday, January 9, 2009 6 pm- 9 pm

Featured Artists:

John Gary Brown

Virginia Marum

Mark Lawrence McPhail

Amanda Porter

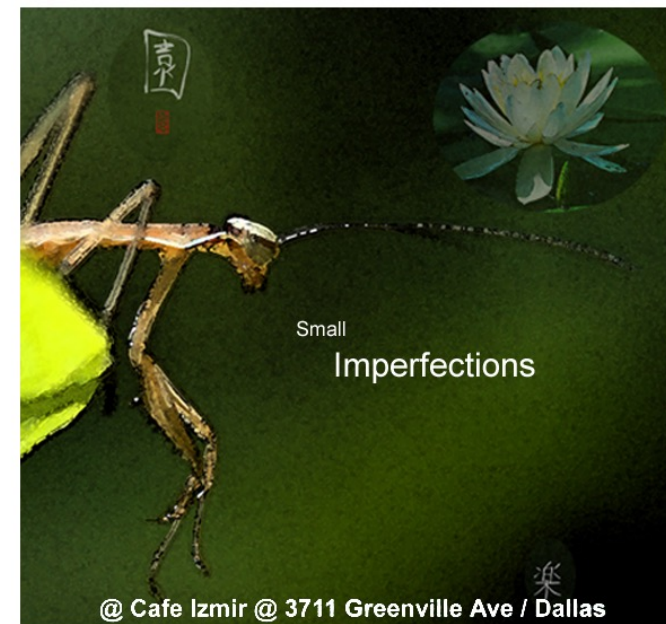
Keith Williams



January 9 - February 16, 2009

6609A Hillcrest Ave, Dallas, Texas 75205, 214. 739. BLUE, [www.theceruleangallery.com](http://www.theceruleangallery.com)

CAFE IZMIR  
presents:



Featured Artist: Mark Lawrence McPhail

This collection of photographs is inspired by the Japanese aesthetic known as "wabi-sabi," which celebrates the extraordinary in the ordinary. Ranging in size from 40" x 20" to 60" x 36", these giclée prints mounted on canvas bring together photography, calligraphy, and digital technology to explore the sublime beauty of the natural world.

Art will be on display through the month of January.

[www.cafeizmir.com](http://www.cafeizmir.com) / 214.826.7788



## Artist Statement

I first developed an attraction to Eastern art and culture in my early teens, at about the same time that my interest in photography and poetry emerged. More than three decades later, these interests came together in the images contained in this gallery. "Small Imperfections" refers to the Japanese aesthetic known as "wabi sabi," which begins with the simple notion that "truth comes from the observation of nature." Truth here is not an abstract idea, but an essential quality of all existence: always changing, imperfect, and incomplete. I attempt to capture this spirit with these images, which blend traditional photographic techniques with digital imaging and the dynamic beauty of calligraphy to express visual as well as poetic meaning. Breaking down divisions between fine art and photography on several levels, these "paintographs" represent the changing character of contemporary art and aesthetics by drawing upon a cultural tradition that embraces and embodies the inevitability of transformation even as it attempts, as does all artistic expression, to capture and preserve for more than a brief instant the beauty and power of the world around us.

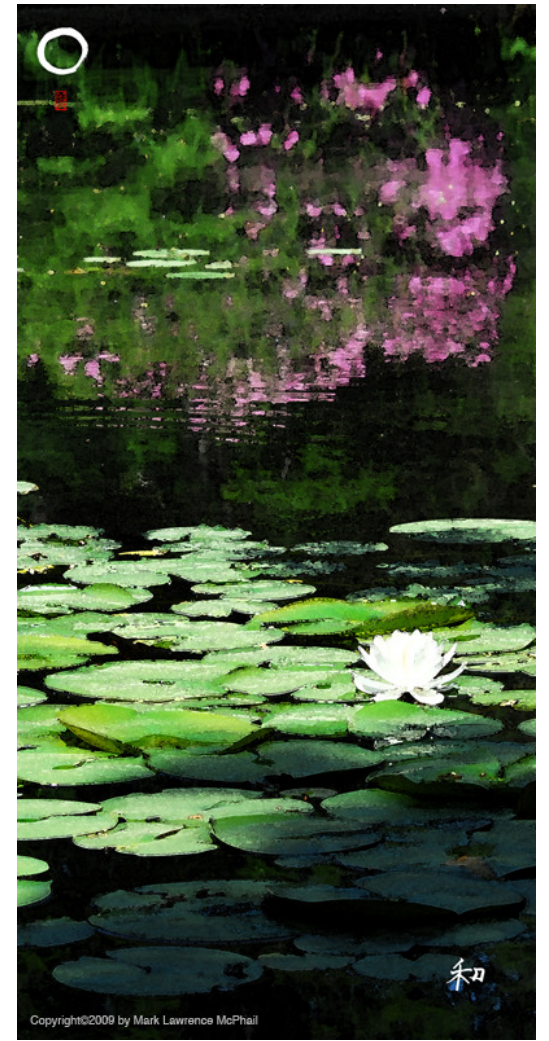
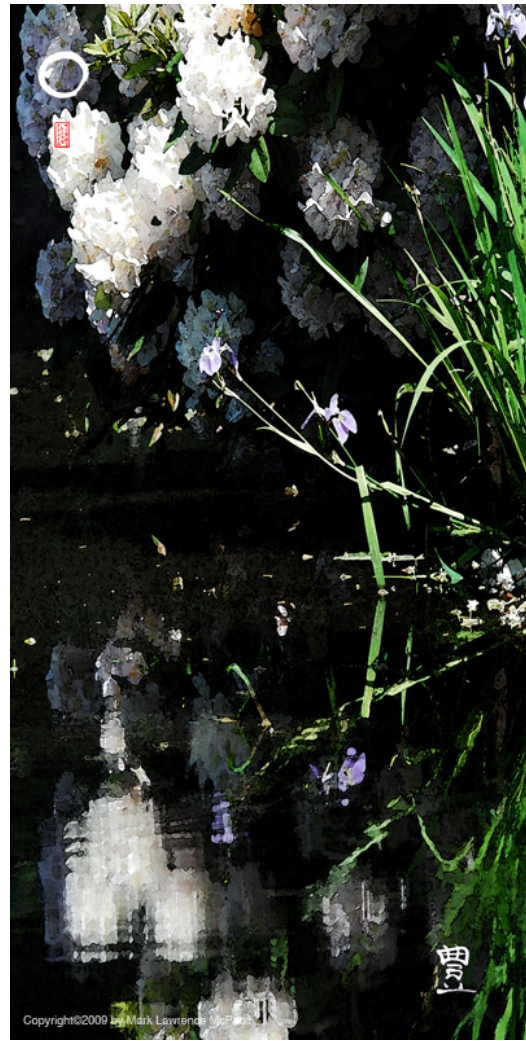
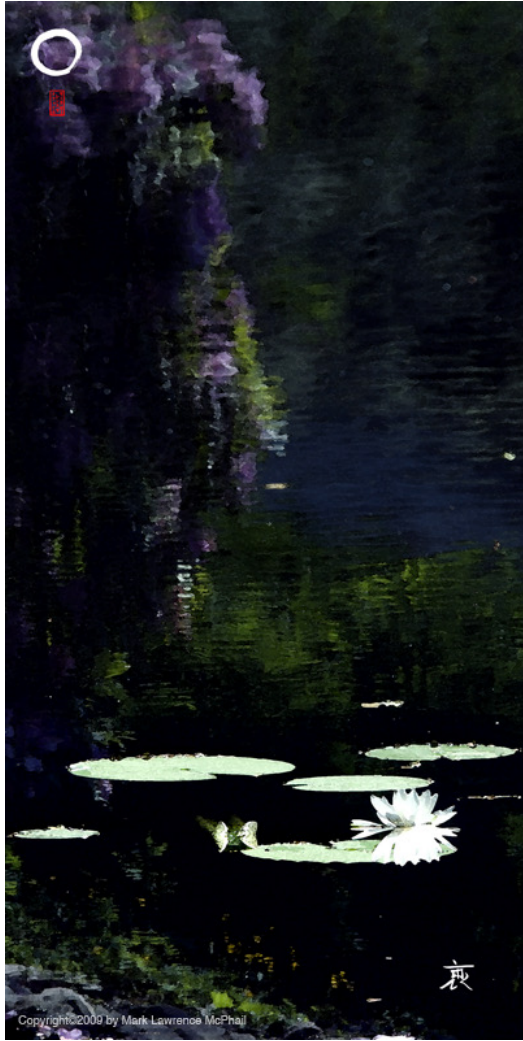




Copyright©2009 by Mark Lawrence McPhail

念









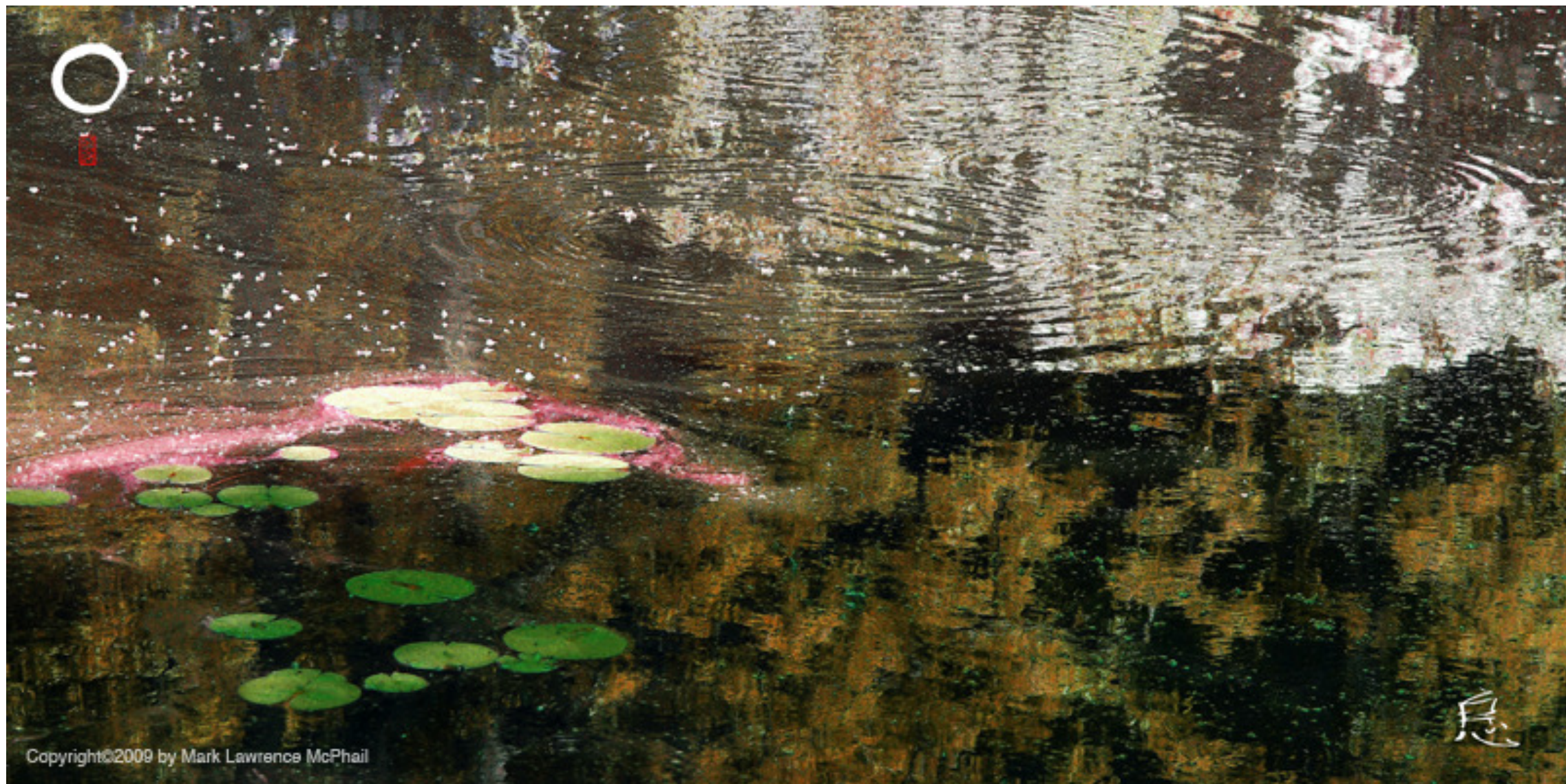
Copyright©2009 by Mark Lawrence McPhail





Copyright©2009 by Mark Lawrence McPhail





Copyright©2009 by Mark Lawrence McPhail





Copyright©2009 by Mark Lawrence McPhail

穩  
印









Copyright©2009 by Mark Lawrence McPhail





Copyright©2009 by Mark Lawrence McPhail





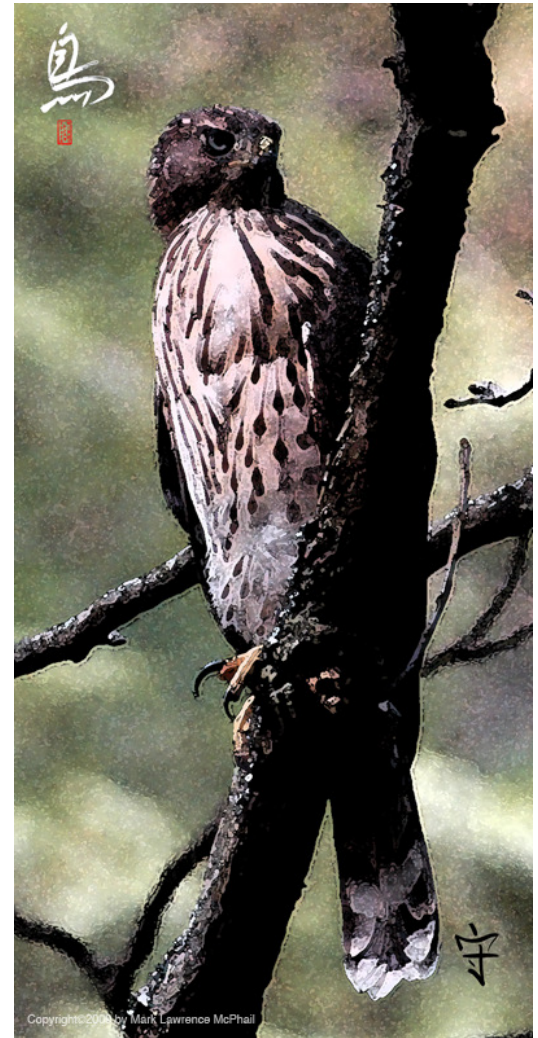
Copyright©2009 by Mark Lawrence McPhail





Copyright©2009 by Mark Lawrence McPhail



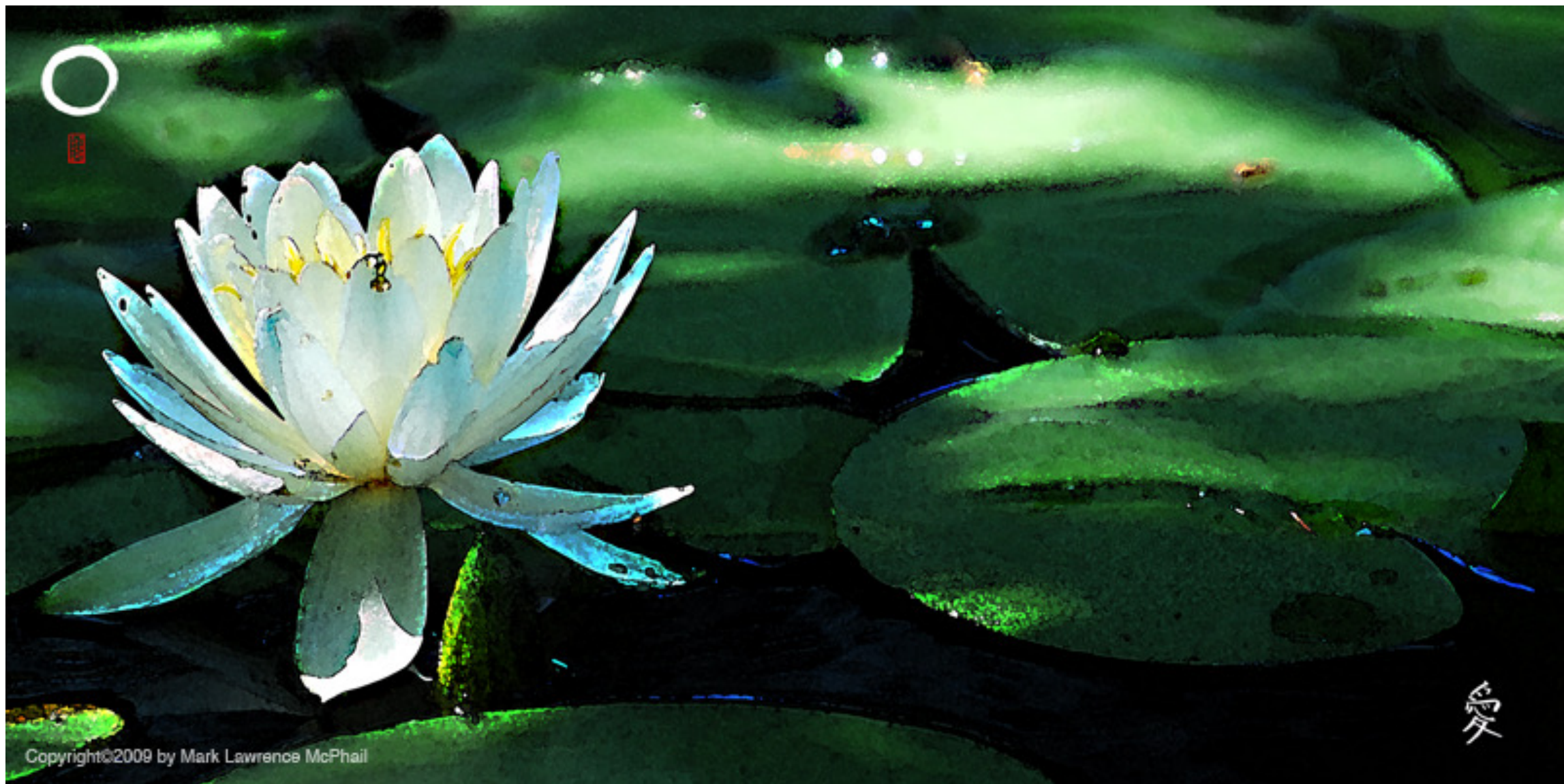






Copyright©2009 by Mark Lawrence McPhail





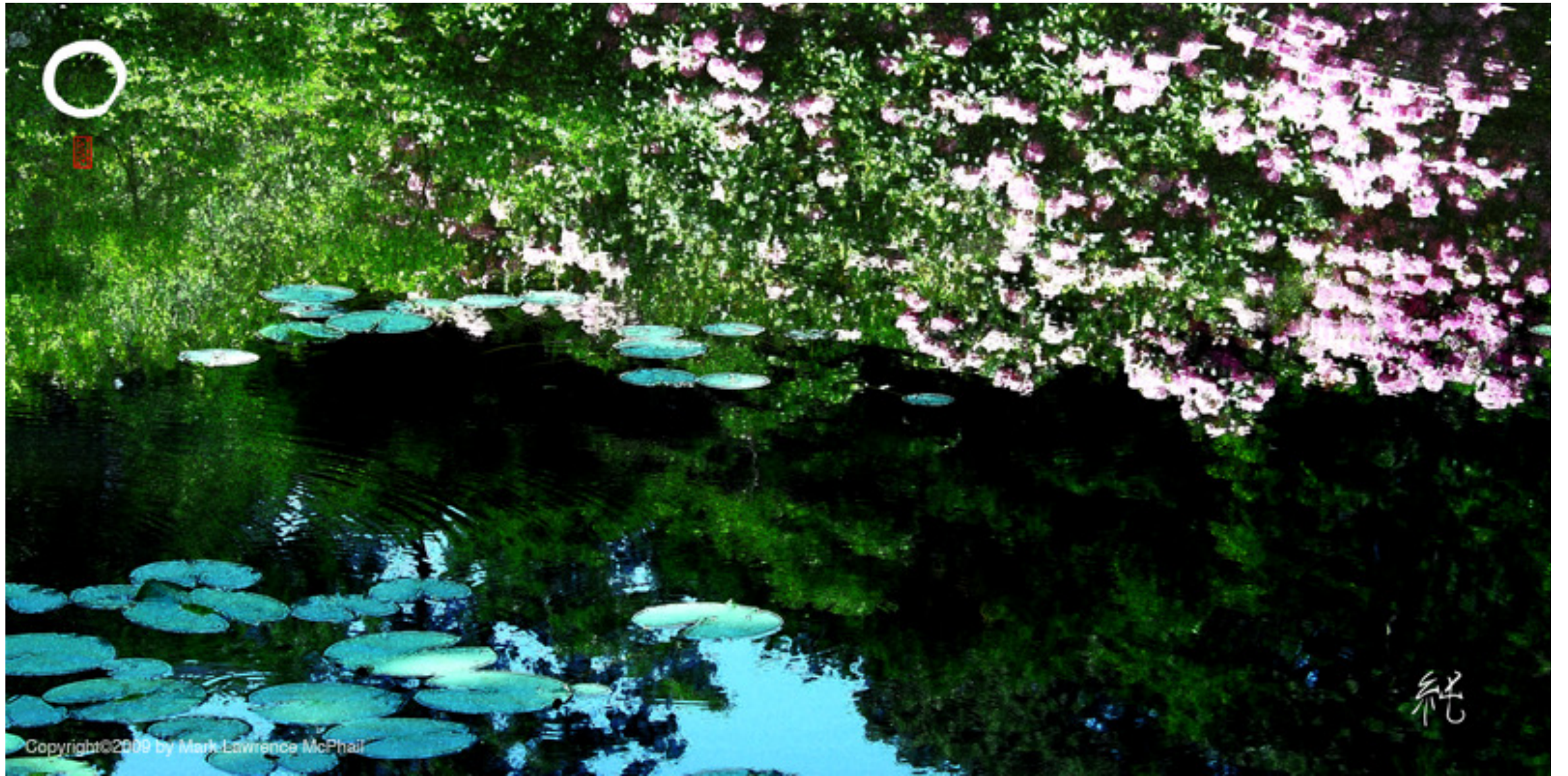
Copyright©2009 by Mark Lawrence McPhail





宋



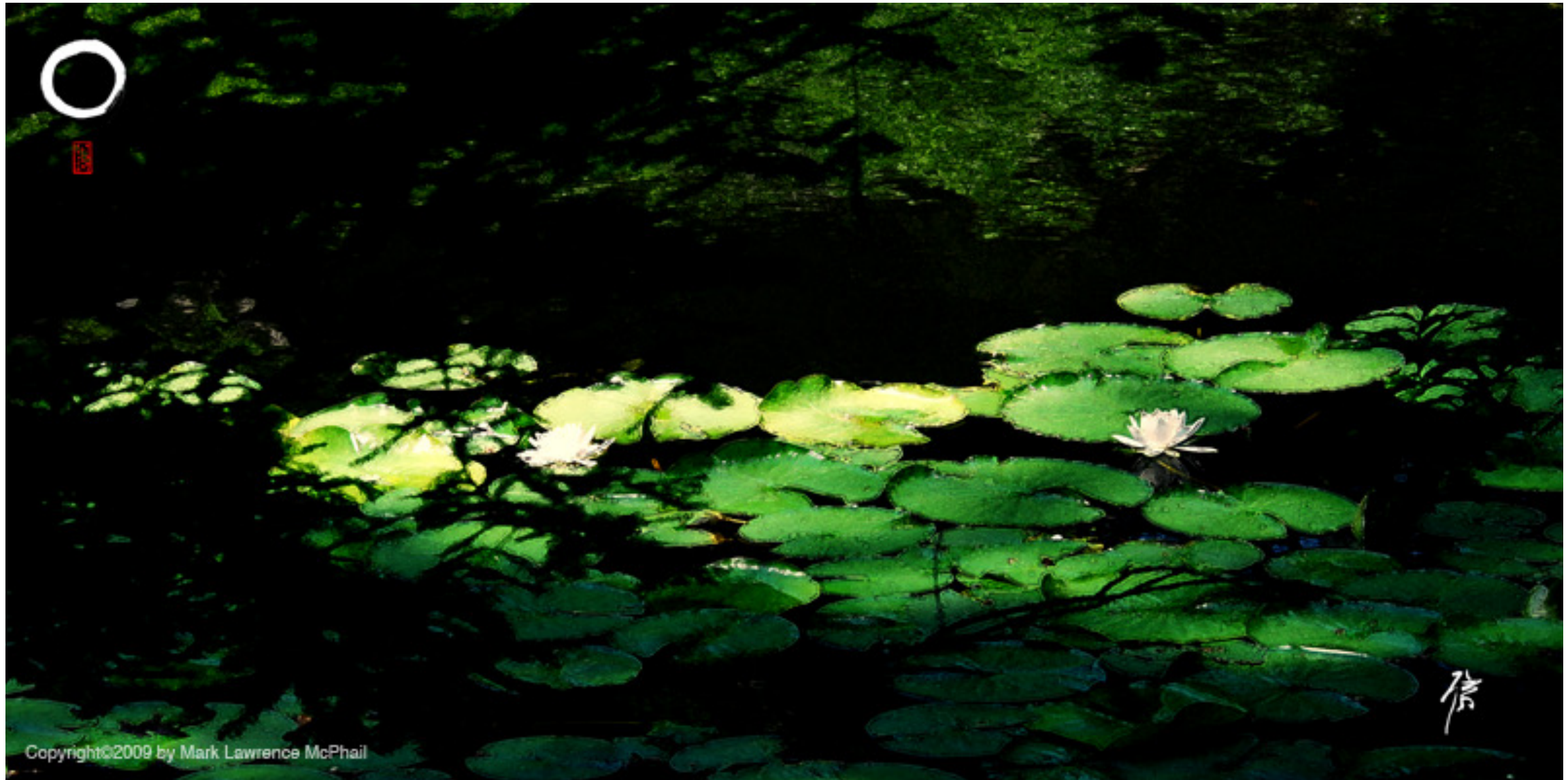


Copyright©2009 by Mark Lawrence McPhail









Copyright©2009 by Mark Lawrence McPhail

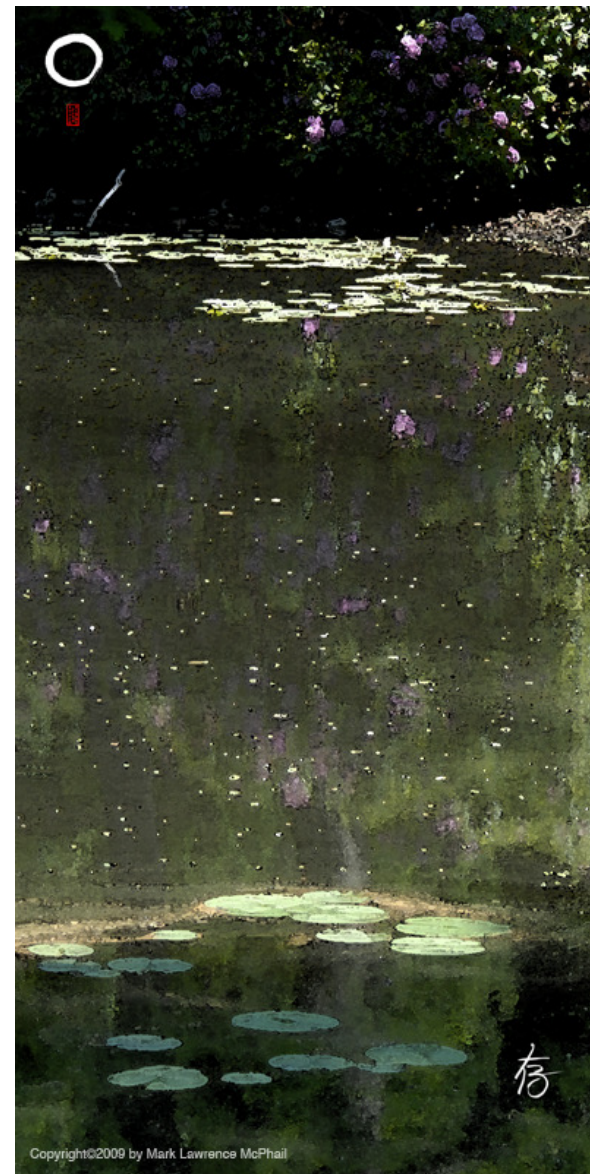
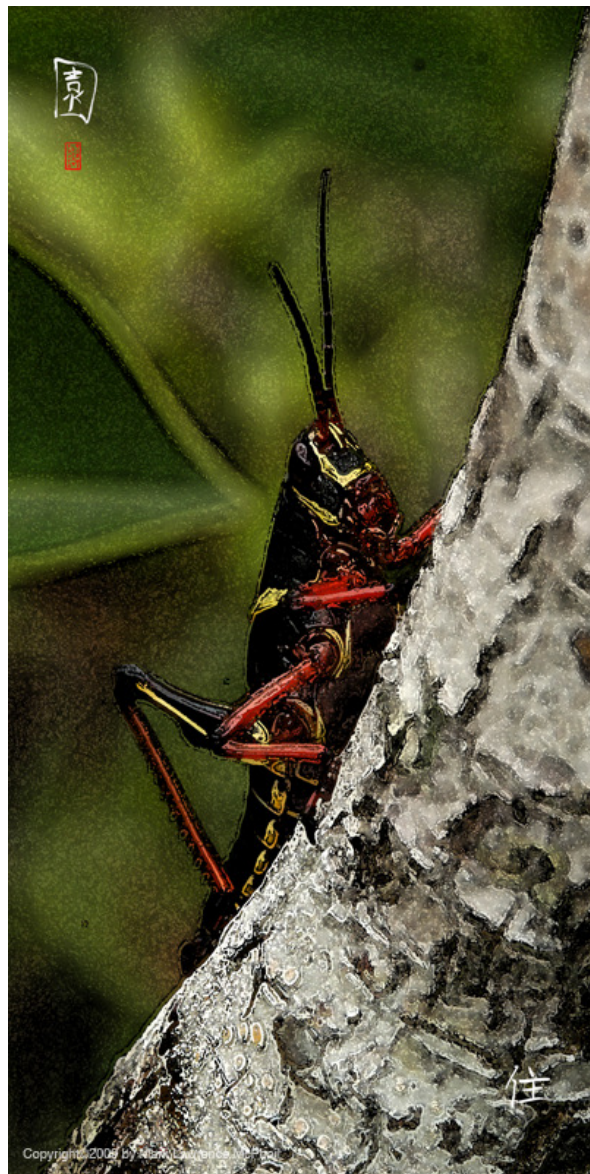
信



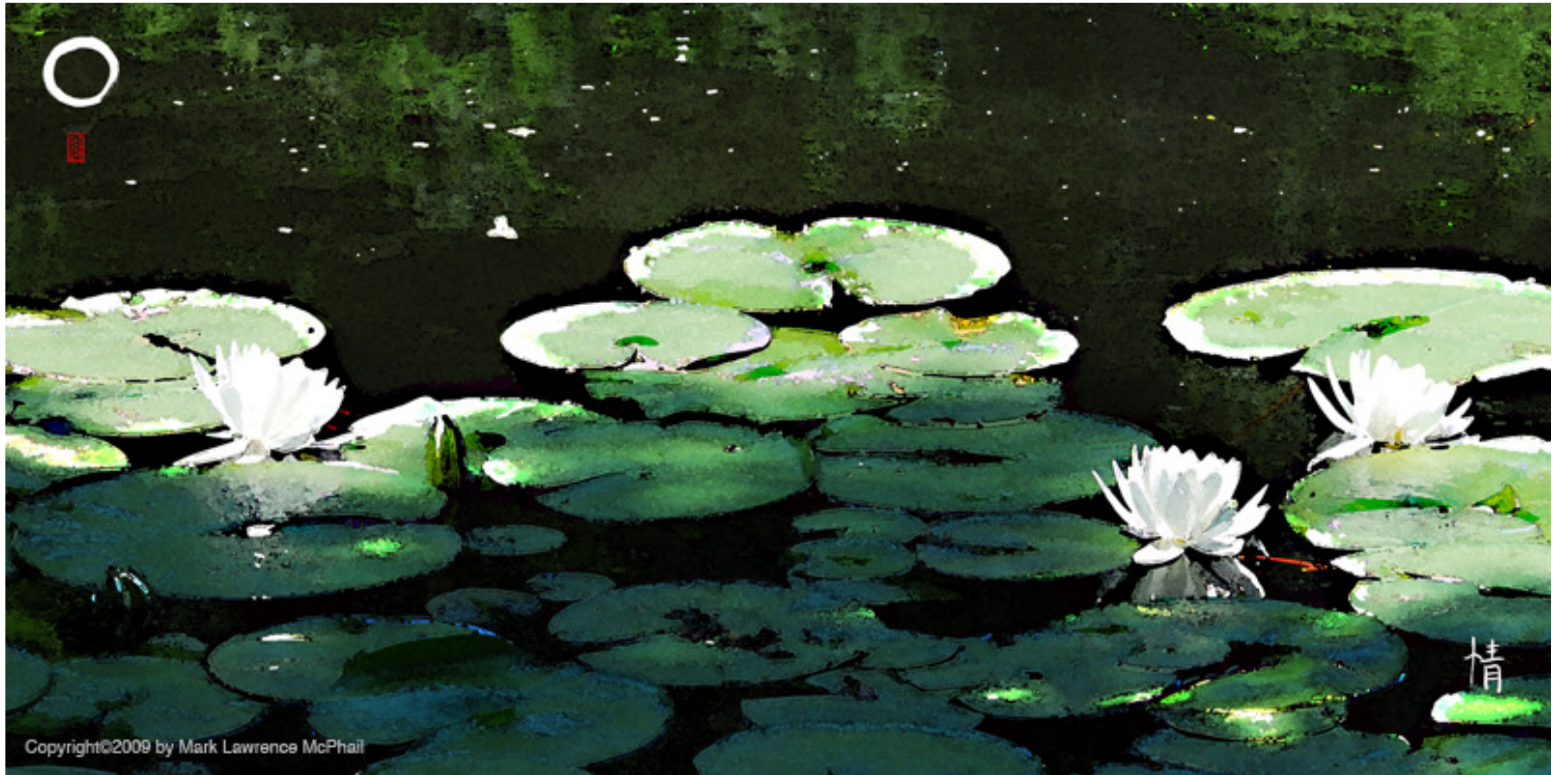


Copyright©2009 by Mark Lawrence McPhail











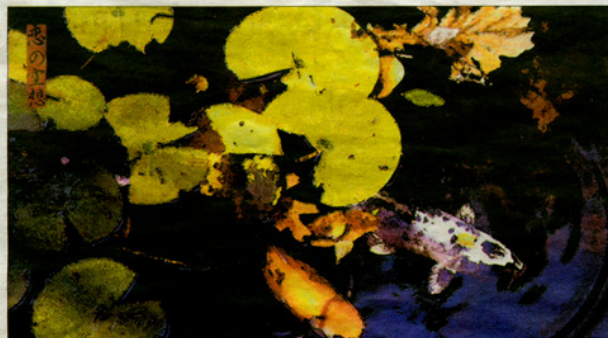


Copyright©2009 by Mark Lawrence McPhail





Copyright©2009 by Mark Lawrence McPhail



## Cerulean Gallery hosts 'Unearthed'

BY ANDREA HUGG

Cerulean Gallery has announced its next exhibition, "Unearthed," which features five artists who use the land and earth as inspiration in their works. The opening reception is tonight at 6 p.m. The exhibition will start today and run through Feb. 16.

"Land and its elements all serve as a catalyst for these artists and a way to unearth memories, emotions or philosophical meaning in the environments that surround them," said Caroline Crockett Kneese, owner of the gallery.

Exhibiting artists include John Gary Brown, Virginia Marum, Mark Lawrence McPhail, Amanda Porter and Keith Williams.

For Brown, a Cerulean Gallery favorite, the landscape provides an opportunity to create worlds that reflect his view of reality. This is achieved through a layering process with oil that explores light and luminosity. His pieces are transitional in feel and full of extraordinary color and depth.

With a working style contrary to Plein Air art, Marum, co-director of Cerulean Gallery, features images and text that interlace the landscape. Her fascinating and dreamlike work is highly delicate and detailed. Marum's technique has an intimacy that is seen through all the layers and details of her work.

McPhail's work brings together a challenge of structure and traditional photography while balancing images with color and composition. His in-

spiration is Japanese culture and as a communications professor at Southern Methodist University, he uses language and narrative within the pieces.

Porter's compelling images transcend traditional portraiture, documenting people in everyday activities and enabling the viewer to see the world as the subject sees and views it. Her photography brings back a style seen in *Time & Life* from the 1950s and '60s. Each piece looks like a scene from a movie, creating an environment that evokes texture and romance.

Williams' paintings in this exhibition are representations of places he has experienced or thought about. They are representational landscapes that use abstract bold brushstrokes to break up the canvas. The perception of form and color are affected so that the paintings are abstract but when contemplated from a further distance they come together as expressive landscapes or environments. Rhythm and harmony come together and movement occurs.

Andrea Hugg handles publicity for Cerulean Gallery.

### MORE INFO

Cerulean Gallery is located at 6609 Hillcrest Ave., Ste. A, in Snider Plaza. Hours are from 10 a.m. to 5:30 p.m. Monday through Friday and 10 a.m. to 5 p.m. Saturday. Call 214-739-BLUE (2583) for additional details, or visit [theceruleangallery.com](http://theceruleangallery.com).



Above Left, "Biting Through" by Mark Lawrence McPhail.

Above Right, "Northeast Harvest" by Virginia Marum.

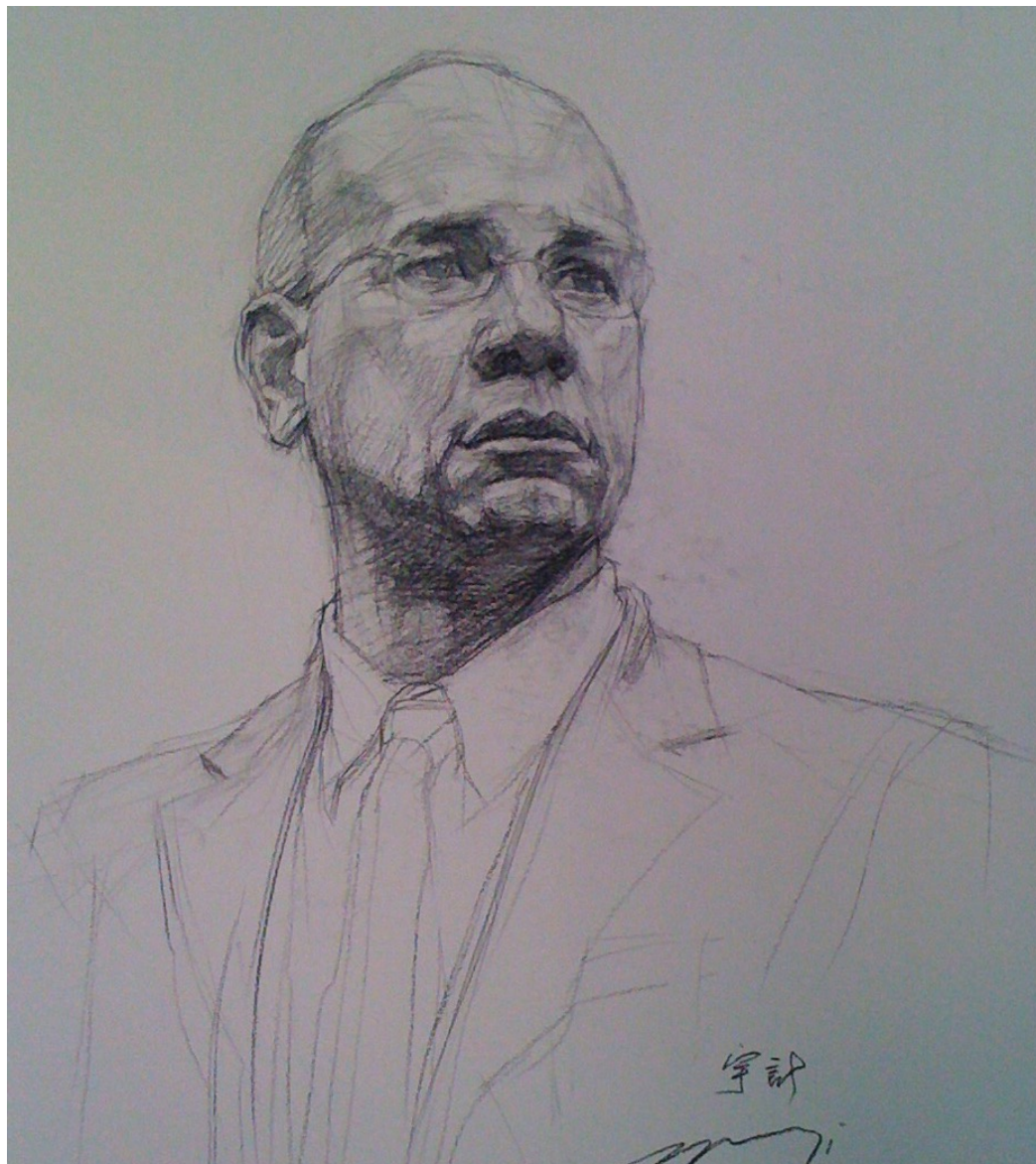
Left, "In the Balkans" by John Gary Brown.

Below, "Ocean" by Keith Williams.



PHOTOS SUBMITTED BY ANDREA HUGG





All images © 2009 by Mark Lawrence McPhail



