



CATÁLOGO DE PRODUCTOS 2024



BIOKERN

Ciencia para el Diagnóstico Clínico

J-40495367-1

ACERCA DE **BIOKERN**

Somos una empresa venezolana dedicada a la importación y comercialización de reactivos para laboratorios clínicos que aporta soluciones innovadoras y de calidad.

Queremos ser una empresa líder en el mercado venezolano con una sólida reputación y una oferta diversificada para nuestros clientes, basándonos en nuestros productos de alta calidad.

Contamos con proveedores de las mejores marcas a nivel mundial en diagnóstico “*in vitro*” e investigación.

Misión

Biokern es una empresa venezolana dedicada a la importación y comercialización de reactivos para laboratorio clínico para diagnóstico “*in vitro*” e investigación científica, que aporta soluciones innovadoras y de calidad.

Visión

Queremos ser una empresa líder en el mercado venezolano en soluciones de diagnóstico “*in vitro*” e investigación científica, con una sólida reputación y una oferta diversificada para los laboratorios clínicos, basándonos en nuestros productos de alta calidad.



abbexa ®

abbexa 
do better science

 **BIOKERN**®

Ciencia para el Diagnóstico Clínico



| CÓDIGO | NOMBRE | TESTS |
|-----------|-----------------------------------|-------|
| ABX298827 | CATALASE ASSAY KIT | 100 |
| ABX151842 | HUMAN ZONULIN EIA | 96 |
| ABX298829 | NITRIC OXIDE ASSAY KIT | 100 |
| ABX572024 | HUMAN LACTOFERRIN (LFT) ELISA KIT | 96 |





AccuBioTech



BIOKERN

LABORATORIOS

Ciencia para el Diagnóstico Clínico



AccuBioTech

CÓDIGO

NOMBRE

TESTS

| | | |
|-----------------|---|-----------------|
| ABT-INF-B299 | CALPROTECTIN SEMI-Q | 10 |
| ABT-IDT-B219 | CHAGAS WHOLE BLOOD CASSETTE | 25 |
| ABT-STD-B18 | CHLAMYDIA TRACHOMATIS ANTIGEN CASSETTE | 20 |
| ABT-CT-B110 | D-DIMER | 20 |
| ABT-IDT-B217 | DENGUE IGG/IGM/NS1 | 20 |
| ABT-TM-B250 | FOB/TRANSFERRIN | 20 |
| ABT-IDT-B262 | H. PYLORI (SEROLOGY) | 20 |
| ABT-IDT-B76 | H. PYLORI ANTIGEN | 20 |
| ABT-IDT-B226 | HAV IGG/IGM | 20 |
| ABT-IDT-B78 | HBsAg/HCV/HIV/Syphilis serum | 15 |
| ABT-IDT-B265 | HIV AG/AB 4TH G | 25 |
| ABT-IDT-B247 | INFLUENZA A + B (ANTIGEN) | 20 |
| ABT-IDT-B237 | MONO TEST | 25 |
| ABT-IDT-B266 | PCT Semi-Quantitative Whole blood | 25 |
| ABT-IDT-B64 | Rotavirus/Adenovirus Cassette | 20 |
| ABT-STD-B17 | SYPHILIS SERUM CASSETTE | 25 |
| ABT-FT-B298 | TORCH IGG/IGM COMBO SERUM CASSETTE | 15 |
| ABT-CT-B59 | TROPONIN I | 20 |
| ABT-IDT-263-10T | TYPHOID CASSETTE SERUM PLASMA | 10 |
| ABT-UM-A33 | URINE REAGENT STRIPS URS-10U | 100 STRIPS/VIAL |



AGAPPE



AGAPPE

| CÓDIGO | NOMBRE | TESTS |
|----------|--|-------|
| 52009013 | ALPHA 1 ANTITRYPSIN (MISPA-i2) | 15 |
| 52009014 | APO A1 (MISPA-i2) | 15 |
| 52009015 | APO B (MISPA-i2) | 15 |
| 52009016 | ASO (MISPA-i2) | 15 |
| 52009017 | C3 (MISPA-i2) | 15 |
| 52009018 | C4 (MISPA-i2) | 15 |
| 52009020 | CRP (MISPA-i2) | 15 |
| 52009022 | DIMER D (MISPA-i2) | 15 |
| 52009023 | FERRITIN (MISPA-i2) | 15 |
| 52009025 | HBA 1C (MISPA-i2) | 30 |
| 52009026 | IgA (MISPA-i2) | 15 |
| 52009027 | IgE (MISPA-i2) | 15 |
| 52009028 | IgG (MISPA-i2) | 15 |
| 52009029 | IgM (MISPA-i2) | 15 |
| 52009050 | KAPPA LIGHT CHAIN (MISPA-i2) | 15 |
| 52009032 | MICRO ALBUMIN (MISPA-i2) | 15 |
| 61516100 | MISPA i2 Automated Specific Protein Analyzer | 15 |
| 52009034 | RF (MISPA-i2) | 15 |



ahn[®]



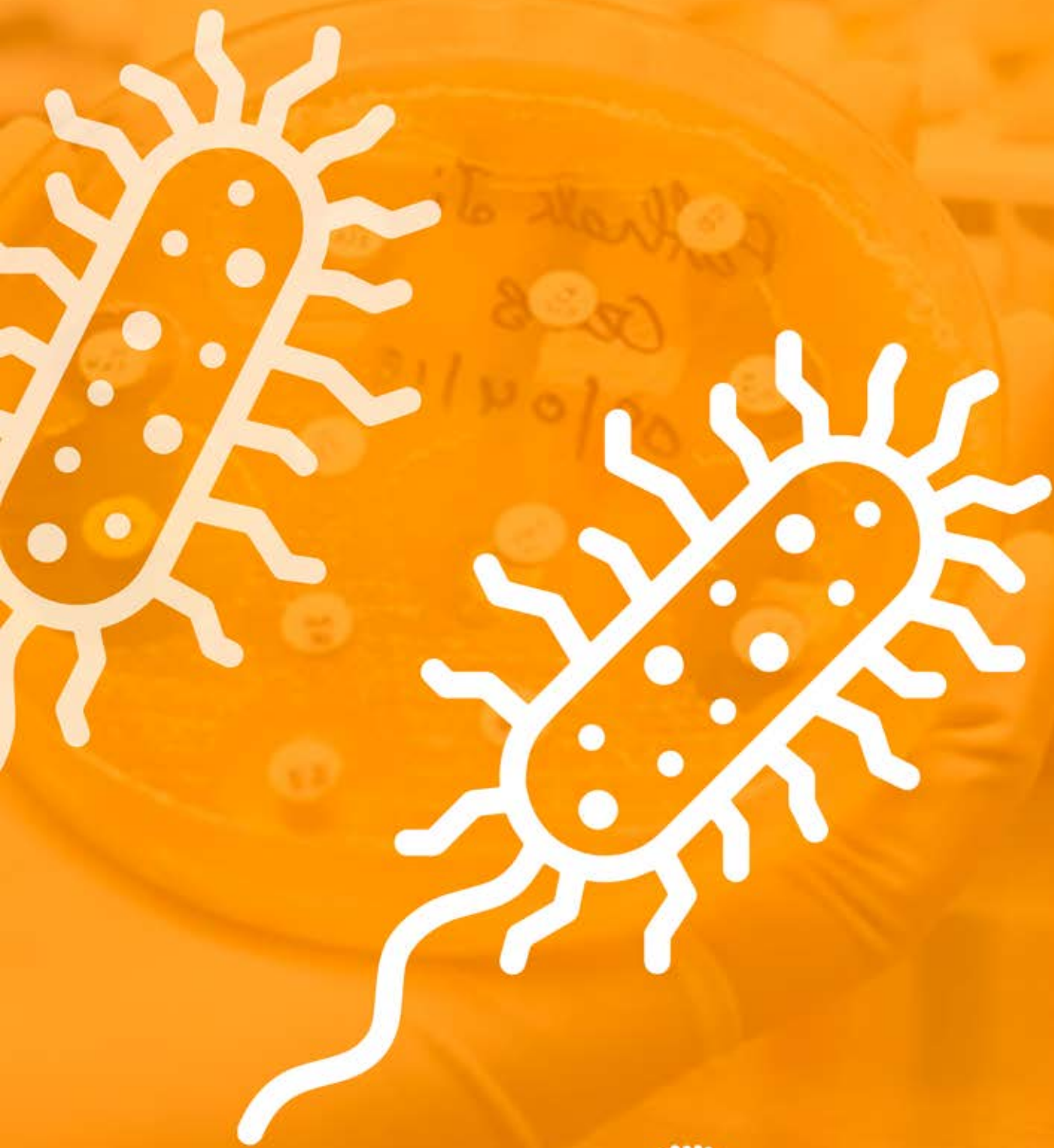
ahn[®]

CÓDIGO NOMBRE

| | |
|------------|--|
| CRC-4-16 | AHN 16 PLACES FIXED ANGLE ROTOR 16X10 ML TUBES |
| 7-010-00-0 | AHN MYLAB (CLC01) CLINICAL CENTRIFUGE 4000 RPM |
| 7-002-01-0 | AHN MYLAB (MC-02) MICROCENTRIFUGE 12 PLACE 15000 RPM |
| 7-300-00-0 | AHN MYLAB MAGNETIC STIRRER SM-01 1500 RPM |
| 7-200-00-0 | AHN MYLAB TUBE ROLLER TR-01 30 RPM |
| 7-120-00-0 | AHN MYLAB VORTEX DIGITAL VT-03 4200 RPM |
| 8-130-00-9 | AHN PIPET4U RACK FOR 4 PIPETS |
| 8-131-00-9 | AHN PIPET4U RACK FOR 6 PIPETS |
| 8-SK1-99-9 | AHN STARTER KIT PIPETTES (0.5-10, 10-100, 100-100 UL), 2-10 ML + RACK |
| VT-02-03 | VORTEX FOAM FOR MICROPLATES |



BIOMAXIMA



 **BIOKERN** LABORATORIOS

Ciencia para el Diagnóstico Clínico

| CÓDIGO | NOMBRE | QTY |
|---------|--|------------|
| E110124 | AMIKACIN 30MCG | 5X50 DISCS |
| E110116 | AMOXICILLIN / CLAVULAN ACID 20/10 (AUGMENTIN) | 5X50 DISCS |
| E110191 | AMPHOTERICIN B 20MCG | 5X50 DISCS |
| E110127 | AMPICILLIN / SULBACTAM 10/10MCG | 5X50 DISCS |
| E110122 | AMPICILLIN 10MCG | 5X50 DISCS |
| E110145 | AZITHROMYCIN 15MCG | 5X50 DISCS |
| E110146 | AZTREONAM 30MCG | 5X50 DISCS |
| E113057 | CEFADROXIL 30MCG | 5X50 DISCS |
| E113125 | CEFEPIME / CLAVULAN ACID 30/10MCG | 5X50 DISCS |
| E113002 | CEFEPIME 30MCG | 5X50 DISCS |
| E113092 | CEFOTAXIME / CLAVULAN ACID 30/10MCG | 5X50 DISCS |
| E113018 | CEFOTAXIME 30MCG | 5X50 DISCS |
| E113133 | CEFOXITIN 30MCG | 5X50 DISCS |
| E191828 | CEFTAZIDIME / AVIBACTAM 10/4MCG | 5X50 DISCS |
| E113098 | CEFTAZIDIME / CLAVULAN ACID 30/10MCG | 5X50 DISCS |
| E113013 | CEFTAZIDIME 30MCG | 5X50 DISCS |
| E113056 | CEFTRIAZONE 30MCG | 5X50 DISCS |
| E113050 | CEFUROXIME 30MCG | 5X50 DISCS |
| E113012 | CEPHALOTIN 30MCG | 5X50 DISCS |
| E113054 | CEPHAZOLIN 30MCG | 5X50 DISCS |
| E113016 | CHLORAMPHENICOL 30MCG | 5X50 DISCS |
| E113142 | CIPROFLOXACIN 5MCG | 5X50 DISCS |
| E113022 | CLINDAMYCIN 2MCG | 5X50 DISCS |
| E113114 | COLISTIN SULPHATE 10MCG | 5X50 DISCS |
| E113122 | COTRIMOXAZOLE 25MCG(SULPHAMETHOXAZOLE /TRIMETHOPIM 23,75/1,25MCG) | 5X50 DISCS |
| E110502 | ERTAPENEM 10MCG | 5X50 DISCS |
| E110515 | ERYTHROMYCIN 15MCG | 5X50 DISCS |

BIO MAXIMA

MICROBIOLOGÍA

| CÓDIGO | NOMBRE | QTY |
|---------|-----------------------------------|------------|
| E190632 | FLUCONAZOL 25MCG | 5X50 DISCS |
| E115183 | FOSFOMYCIN 50MCG | 5X50 DISCS |
| E110712 | GENTAMYCIN 10MCG | 5X50 DISCS |
| E110718 | GENTAMYCIN 120MCG | 5X50 DISCS |
| E110913 | IMIPENEN 10MCG | 5X50 DISCS |
| E191834 | ITRACONAZOLE 10MCG | 5X50 DISCS |
| E191112 | KETOCONAZOL 10MCG | 5X50 DISCS |
| E110106 | LEVOFLOXACIN 5MCG | 5X50 DISCS |
| E110107 | LINEZOLID 30MCG | 5X50 DISCS |
| E111352 | MEROPENEM 10MCG | 5X50 DISCS |
| E111328 | METRONIDAZOLE 5MCG | 5X50 DISCS |
| E111330 | MUPIROCIN 5MCG | 5X50 DISCS |
| E111426 | NALIDIXID ACID 30MCG | 5X50 DISCS |
| E111432 | NITROFURATION 300MCG | 5X50 DISCS |
| E111433 | NORFLOXACION 10MCG | 5X50 DISCS |
| E111465 | NOVOBIOCIN 30MCG | 5X50 DISCS |
| E111516 | OFLOXACIN 5MCG | 5X50 DISCS |
| E111515 | OXACILLIN 1MCG | 5X50 DISCS |
| E111614 | PENICILLIN G10 UNITS | 5X50 DISCS |
| E110103 | PIPERACILLIN/TAZOBACTAM 100/10MCG | 5X50 DISCS |
| E111632 | POLYMYXIN B 300MCG | 5X50 DISCS |
| E111816 | RIFAMPICIN 5MCG | 5X50 DISCS |
| E111925 | STREPTOMYCIN 10MCG | 5X50 DISCS |
| E112022 | TEICOPLANIN 30 MCG | 5X50 DISCS |
| E112038 | TEMOCILLIN 30MCG | 5X50 DISCS |
| E112010 | TETRACYCLINE 30MCG | 5X50 DISCS |
| E112020 | TOBRAMYCIN 10MCG | 5X50 DISCS |
| E112023 | VANCOMYCIN 30MCG | 5X50 DISCS |
| E100634 | VORICONAZOLE 1MCG | 5X50 DISCS |

Bio🐾panda



Biopanda



Pneumo Screen

| CÓDIGO | NOMBRE | TESTS |
|-----------------|--|-------|
| RAPG-BRU-001 | BRUCELA ABORTUS ANTIGEN RAPID TEST CASSETTE | 10 |
| RAPG-CDG-001 | C. DIFFICILE GDH Ag RAPID TEST CASSETTE | 10 |
| RAPG-CDT-001 | C. DIFFICILE TOXIN A+B RAPID TEST CASSETTE | 10 |
| RAPG-CHIK-001 | CHIKUNGUNYA IgG/IgM RAPID TEST CASSETTE | 20 |
| RAPG-RSPV-005 | COVID-19/ INFLUENZA A+B/RSV/ ADENOVIRUS/ M. PNEUMONIAE Ag COMBO RAPID TEST | 10 |
| RAPG-EGC-002 | ENTAMOEBIA/ GIARDIA/ CRYPTO COMBO RAPID | 10 |
| RAPG-HPAB-002 | H.PYLORI ANTIBODY RAPID TEST CASSETTE (WB/S/P) | 20 |
| RAPG-HBCAB-001 | HBcAb RAPID TEST CASSETTE | 20 |
| RAPG-HBSABG-002 | HBsAg RAPID TEST STRIP (S/P) | 50 |
| RAPG-HCV-102 | HCV RAPID TEST STRIP (S/P) | 50 |
| RAPG-LEG-001 | LEGIONELLA RAPID TEST CASSETTE | 20 |
| RAPG-LEP-001 | LEPTOSPIRA IgG/IgM RAPID TEST CASSETTE | 20 |
| RAPG-MLR-004 | MALARIA P.f/P.v RAPID TEST CASSETTE | 20 |
| RAPG-MYP-002 | MYCOPLASMA PNEUMONIAE ANTIGEN RAPID TEST | 20 |
| RAPG-PBNP-003 | NT-proBNP RAPID TEST CASSETTE | 10 |
| RAPG-HCG-201 | PREGNANCY RAPID TEST STRIP (S/P/U) | 50 |
| RAPG-SPT-001 | SALMONELLA TYPHI AND PARATYPHI ANTIGEN COMBO RAPID TEST | 10 |
| RAPG-SPN-001 | STREPTOCOCCUS PNEUMONIAE Ag RAPID TEST CASSETTE | 10 |
| ELIFN-HTB-001 | TB ELIFN | 27 |

CHROMagar™

The Chromogenic Media Pioneer



CHROMagar™

The Chromogenic Media Pioneer

MICROBIOLOGÍA

| CÓDIGO | NOMBRE | QTY |
|----------|------------------------------------|-----|
| AQ056 | AquaCHROM ECC (100 DOSIS X 100 ml) | |
| AC092 | Acinetobacter | 5L |
| BC732 | Bacillus cereus | 5L |
| PF652 | C. perfringes | 5L |
| CGRT2 | C3GR | 5L |
| CP572 | Campylobacter | 5L |
| CA242 | Candida Plus | 5L |
| EF342 | CCA | 5L |
| CO262 | COL-APSE | 5L |
| EC168 | E. coli | 5L |
| KPRT2 | KPC | 5L |
| LN762 | LIN-R | 5L |
| MH482(B) | MH Orientation base | 5L |
| MH482(S) | MH Orientation Supplement | 5L |
| MR502 | MRSA powder | 5L |
| SC172 | mSuperCARBA. | 5L |
| RT412 | Orientation base | 5L |
| PS832 | Pseudomonas | 5L |
| LM852 | Salmonella | 5L |
| ST162 | STEC | 5L |
| CQ382 | Sthapylococcus | 5L |
| SP372 | Strep A | 5L |
| VB912 | Vibrio | 5L |
| VR952 | VRE | 5L |
| YE492 | Y. enterocolitica | 5L |
| ESRT2 | ESBL | 5L |





C.P.M. COMPAGNIA PER LA MEDICINA S.R.L.



Ciencia para el Diagnóstico Clínico

CÓDIGO

NOMBRE

TESTS

| | | |
|---------|--------------------------|----|
| MS01294 | C.S.F. WELL D-ONE | 10 |
| MS01335 | NEONATAL FAST WELL D-ONE | 10 |
| MS01281 | UROGEN WELL D-ONE | 10 |







| CÓDIGO | NOMBRE | TESTS |
|--------|-----------------------------------|-------|
| DKO004 | 17OH PROGESTERONE. ELISA | 96 |
| DKO146 | 25 OH VITAMIN D | 96 |
| DKO053 | ALDOSTERONE. ELISA | 96 |
| DKO099 | ANA SCREEN. ELISA | 96 |
| DKO008 | ANDROSTENEDIONE. ELISA | 96 |
| DKO110 | ANTI BETA2 GLYCOP. IgG. ELISA | 96 |
| DKO111 | ANTI BETA2 GLYCOP. IgM. ELISA | 96 |
| DKO113 | ANTI CARDIOLIPIN IgG. ELISA | 96 |
| DKO112 | ANTI CARDIOLIPIN IgM. ELISA | 96 |
| DKO149 | ANTI CP IgG NEW GENERATION. ELISA | 96 |
| DKO095 | ANTI-DS DNA IgG. ELISA | 96 |
| DKO092 | ANTI- MPO (p-ANCA) | 96 |
| DKO114 | ANTI PHOSPHOLIPID SCREEN. ELISA | 96 |
| DKO091 | ANTI- PR-3 (c-ANCA). ELISA | 96 |
| DKO115 | ANTI-TG. ELISA | 96 |
| DKO108 | ANTI TISSUE TG IGA. ELISA | 96 |
| DKO109 | ANTI TISSUE TG IGG. ELISA | 96 |
| DKO116 | ANTI-TPO. ELISA | 96 |
| DKO014 | b HCG. ELISA | 96 |
| DKO054 | CA 125. ELISA | 96 |
| DKO055 | CA15-3. ELISA | 96 |
| DKO056 | CA 19-9. ELISA | 96 |
| DKO040 | CH50. ELISA | 96 |
| DKO016 | CIC C1q. ELISA | 96 |
| DKO017 | CIC C3d. ELISA | 96 |
| DKO001 | CORTISO.L ELISA | 96 |
| DKO077 | C-PEPTIDE. ELISA | 96 |
| DKO107 | DEAMIDATED GLIADIN IGA. ELISA | 96 |
| DKO106 | DEAMIDATED GLIADIN IGG.. ELISA | 96 |
| DKO124 | DHEA. ELISA | 96 |
| DKO005 | DHEA-S. ELISA | 96 |



| CÓDIGO | NOMBRE | TESTS |
|--------|-----------------------------|-------|
| DKO003 | ESTRADIOL. ELISA | 96 |
| DKO039 | FERRITIN. ELISA | 96 |
| DKO138 | FREE PSA. ELISA | 96 |
| DKO050 | HGH. ELISA | 96 |
| DKO186 | IGF1 (SOMATOMEDIN C). ELISA | 96 |
| DKO076 | INSULIN. ELISA | 96 |
| DKO157 | Intact PTH. ELISA | 96 |
| DKO009 | LH. ELISA | 96 |
| DKO006 | PROGESTERONE. ELISA | 96 |
| DKO087 | SHBG. ELISA | 96 |
| DKO002 | TESTOSTERONE. ELISA | 96 |
| DKO048 | THYROGLOBULIN. ELISA | 96 |
| DKO137 | TOTAL PSA. ELISA | 96 |
| DKO013 | TSH. ELISA | 96 |
| DKO018 | URINARY CORTISOL. ELISA | 96 |

FAR

DIAGNOSTICS





DIAGNOSTICS

| CÓDIGO | NOMBRE | TESTS |
|----------|---------------------------------------|-------|
| KR04-20 | 17-KETOSTEROIDS | 20 |
| KR07-20 | 5-HIAA | 20 |
| KR12-20 | ACIDO VANILMANDELICO | 20 |
| KR03-20 | AMMONIA | |
| RD42-08 | C3c+C4 | 2X4 |
| RD43-08 | Ig/Chains Kappa +Ig/ Chains Lambda | 4+4 |
| RD41-12 | IGA+ IGG+IGM | 3X4 |
| CM05-50T | KIDNEY STONES | |
| KR08-20 | METANEFRINE | |
| 4492 | PEAK SCALE LUPE. RID | |
| 4415 | TRANSFERRIN | 8X3 |





Fortress
Diagnostics





Fortress
Diagnostics

CÓDIGO

NOMBRE

| | |
|----------|--|
| BXC0208A | Adenosine Deaminase (ADA) Enzymatic, UV |
| BXE0761A | Anti-HBc EIA |
| BXE0752A | Anti-HBs (Quantitative). EIA |
| COAG110A | APTT Reagent with Calcium Chloride (0.02M) |
| BXC0450B | Cardiac Control Set 3 x 1 x 1ml |
| FEBWC100 | Febrile Antigen Kit (Widal) With Controls |
| BXE0601A | HAV IgG. EIA |
| BXE0602A | HAV IgM. EIA |
| BXE0603A | HBc. IgM. EIA |
| BXE0741A | HbsAg. EIA |
| BXE0783A | HCV (with CE) EIA |
| BXE0910A | HTLV 1 + 2 EIA |
| BXC0363D | Immunoassay Tri-Level Control |
| COAG106A | Lupus Anticoagulants (LA) |
| BGABD040 | Monoclonal Grouping Kit |
| BXC0148A | Oxalate (Urinary) Control (Level 1) |
| BXC0129A | Oxalate (Urinary) Enzymatic Colorimetric |
| COAG101A | PT High Sensitivity |
| BXC0793A | Tumour Marker Control (Tri-Level) |





**GOLD
STANDARD
DIAGNOSTICS**

Kassel GmbH



BIOKERN®

Ciencia para el Diagnóstico Clínico



**GOLD
STANDARD
DIAGNOSTICS**

Kassel GmbH

CÓDIGO

NOMBRE

TESTS

ILE-LBL14

immunoLINE IgG4 Nutritional VE1

16X20



Alfa Lactoalbúmina
Amarilla de Huevo
Arroz
Atún
Avena
Beta Lactoglobulina
Cacao
Camarón
Cangrejo
Caseína
Cerdo
Clara de Huevo
Gluten
Leche de Vaca
Maíz
Maní
Naranja
Pollo
Soya
Trigo



GOLD STANDARD DIAGNOSTICS

Kassel GmbH

CÓDIGO

NOMBRE

TESTS

ILE-SCG150 immunoSCREEN IgG Nutritional VE
ELISA

3X24

Alfa Lactoalbúmina
Almendra
Amarilla de Huevo
Arroz
Atún
Avena
Beta Lactoglobulina
Cacao
Camarón
*Candida
Cangrejo
Caseína
Cerdo
Claro de Huevo
Gluten
Leche de Vaca
Maíz
Maní
Naranja
Piña
Pollo
Quinoa
Soya
Trigo



*(Candida) Detección de anticuerpos IgG contra Candida, como parte del estudio de Microbiota en el paciente.



GOLD STANDARD DIAGNOSTICS

Kassel GmbH

CÓDIGO

NOMBRE

TESTS

ILE-SCG151 immunoSCREEN IgG Nutritional VE
ELISA

2X40

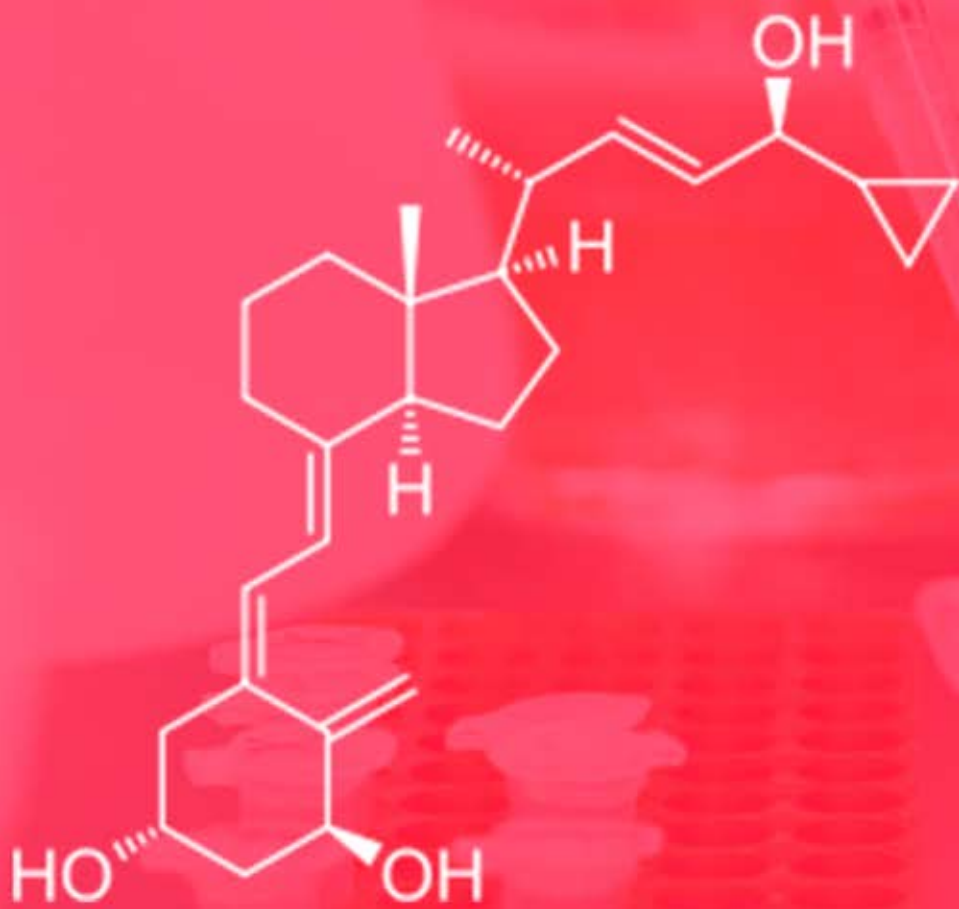
Ácido Sórbico
Agar-Agar
Alfa Lactoalbúmina
Almendra
Amarilla de Huevo
Arroz
Atún
Avena
Bacalao
Banana
Benzoato
Beta Lactoglobulina
Cacao
Camarón
*Candida
Cangrejo
Carne Vacuna
Caseína
Cerdo
Clara de Huevo

Durazno
Fresa
Gluten
Leche de Vaca
Maíz
Maní
Manzana
Naranja
Papa
Piña
Pollo
Quinoa
S. Cerevisae
Sardina
Soya
Tomate
Trigo
Vainilla
Zanahoria



*(Candida) Detección de anticuerpos IgG contra Candida, como parte del estudio de Microbiota en el paciente.

ids[®]



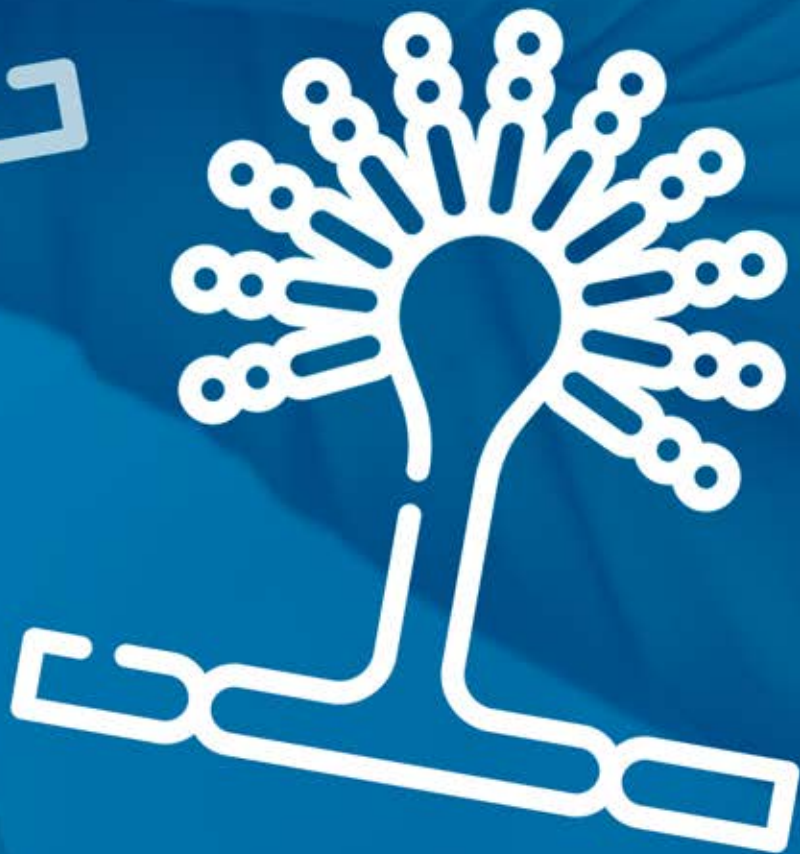


| CÓDIGO | NOMBRE | TESTS |
|--------|--------|-------|
|--------|--------|-------|

| | | |
|----------|---------------------------------|----|
| AC-57SF1 | 25-Hydroxy Vitamin Ds. ELISA | 96 |
| AC-02F1 | Serum CrossLaps® (CTX-I). ELISA | 96 |



 **IMMY**



 **BIOKERN** LABORATORIO
Ciencia para el Diagnóstico Clínico



IMMY

| CÓDIGO | NOMBRE | TESTS |
|--------|--|-------|
| ID1019 | 4-SERIES CLEARGEL ID PLATES, SMALL WELL | |
| AF2003 | ASP. GM LATERAL FLOW ASSAYS | 50 |
| A30110 | ASPERGILLUS ID ANTIGEN 1 ML | |
| A40110 | ASPERGILLUS ID POSITIVE CONTROL 1 ML | |
| C50110 | CANDIDA ID ANTIGEN 1 ML | |
| C60110 | CANDIDA ID POSITIVE CONTROL 1 ML | |
| C30110 | COCCIDIODES IDCDF ANTIGEN 1 ML | |
| C40110 | COCCIDIODES IDCDF POSITIVE CONTROL 1 ML | |
| CR2003 | CRYPTOCOCCAL ANTIGEN LATERAL FLOW ASSAYS | 50 |
| LFARDR | CUBE READER | |
| H50110 | HISTOPLASMA ID ANTIGEN 1 ML | |
| H60110 | HISTOPLASMA ID POSITIVE CONTROL 1 ML | |
| CA1001 | ID-CANDIDA ANTIBODY SYSTEM | 40 |
| ID1001 | ID-FUNGAL ANTIBODY SYSTEM | 24 |
| CA1019 | ID PLATES, 1 SERIES CLEAR GEL (10 UNITS) | |
| CR1003 | LATEX CRYPTOCOCCUS ANTIGEN DETECTION | 50 |
| PI0110 | PARACOCCIDIODES ID ANTIGEN 1ML | |
| PJ0110 | PARACOCCIDIODES ID POSITIVE CONTROL 1ML | |



LABSYSTEMS

D I A G N O S T I C S

speaking your language



LABSYSTEMS

D I A G N O S T I C S

speaking your language

CÓDIGO

NOMBRE

| | |
|----------|---|
| 6199871 | NEONATAL 17-OH-Progesterone FEIA 960 WELLS (FEIA) |
| 6199810 | NEONATAL GALT TEST 960 WELLS (FEIA) |
| 6199831 | NEONATAL IRT 960 WELLS (FEIA) |
| 6199860 | NEONATAL G6PD 960 WELLS (FEIA) |
| 6199821 | NEONATAL BIOTIDINASE 960 WELLS (FEIA) |
| 6199880 | NEONATAL hTSH FEIA PLUS 960 WELLS (FEIA) |
| 61998963 | NEONATAL PHENYLALANINE 960 WELLS (FEIA) |
| 5420100 | NS200 READER (FLUOROMETER) |
| 6199850 | NEONATAL GALACTOSE. TEST 960 WELLS (FEIA) |
| 6199890 | NEONATAL T4 FEIA 480 WELLS |



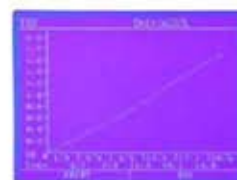
Meril



Meril

Lector de ELISA

Merilyzer | EIAQuant™

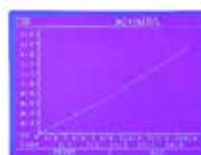


- Pantalla Táctil y a color
- Software intuitivo
- Auto diagnóstico
- Función de copiado de prueba
- Sistema de 8 canales de fibra óptica
- Filtros de 405 nm, 492 nm y 630 nm
- Almacenamiento de hasta 3 curvas por parámetro
- Alto rango dinámico: 0 - 4 OD
- Lecturas monocromáticas y bicromático para mayor precisión.

Meril

Lavadora de placas ELISA

Merilyzer | EIAWash™



EIAWash es la elección perfecta para placas de 96 pocillos con flexibilidad de opciones de lavado para 8 o 12 canales, con diversos programas de aspirado y dispensado, empleando un diseño confiable, simple e innovador que simplifica su mantenimiento.

monocent



 **BIOKERN** ACCENTUM

Ciencia para el Diagnóstico Clínico

| CÓDIGO | NOMBRE | TESTS |
|-----------|----------------------------------|-------|
| EL1-1045 | 25(OH) VITAMIN D. ELISA | 96 |
| EL3-1046 | ACTH. ELISA | 96 |
| EL3-1079 | AMH (ANTI-MULLERIAN). ELISA | 96 |
| EL1-1009 | ANA SCREEN. ELISA | 96 |
| EL2-1011 | ANTI-CCP. ELISA | 96 |
| EL20-1013 | ANTI-PHOSPHOLIPIDS SCREEN. ELISA | 96 |
| EL2-1018 | Beta-2-Glycoprotein 1 IgG. ELISA | 96 |
| EL2-1019 | Beta-2-Glycoprotein 1 IgM. ELISA | 96 |
| EL2-1277 | BETA 2 MICROGLOBULIN. ELISA | 96 |
| EL1-1021 | CARDIOLIPIN IgG. ELISA | 96 |
| EL1-1022 | CARDIOLIPIN IGM. ELISA | 96 |
| EL3-1051 | DIGOXIN ELISA | 96 |
| EL1-1023 | DS-DNA. ELISA | 96 |
| EL46-1130 | EBNA IgG. ELISA | 96 |
| EL46-1136 | EBV VCA IgG. ELISA | 96 |
| EL46-1137 | EBV VCA IgM. ELISA | 96 |
| EL1-1004 | FERRITIN. ELISA | 96 |
| EL1-1005 | FOLATE. ELISA | 96 |
| EL1-1264 | FREE TESTOSTERONE. ELISA | 96 |
| EL45-1381 | HAV Ab. ELISA | 96 |
| EL45-1143 | HAV IgM. ELISA | 96 |
| EL13-1144 | HBcAb. ELISA | 96 |
| EL13-1150 | HBcAb IgM. ELISA | 96 |
| EL45-1145 | HBsAb. ELISA | 96 |
| EL45-1157 | HCV Ab. ELISA | 96 |
| EL13-1316 | HDV Ag. ELISA | 96 |
| EL13 1156 | HEV IgG. ELISA | 96 |
| EL20-1062 | IGF-1. ELISA | 96 |

| CÓDIGO | NOMBRE | TESTS |
|-----------|------------------------------------|-------|
| ELI-1058 | INSULIN. ELISA | 96 |
| ELI-1048 | INTACT PTH. ELISA | 96 |
| EL10-1029 | Jo-1. ELISA | 96 |
| EL20-1032 | MPO (P-ANCA). ELISA | 96 |
| ELI-1236 | NEONATAL 17-OH PROGESTERONE. ELISA | 96 |
| ELI-1303 | Neonatal G6PD. ELISA | 96 |
| ELI-1243 | Neonatal Galactose. ELISA | 96 |
| ELI-1241 | Neonatal IRT. ELISA | 96 |
| ELI-1237 | NEONATAL MSUD. ELISA | 96 |
| ELI-1238 | Neonatal PKU. ELISA | 96 |
| ELI-1240 | NeoNatal T4. ELISA | 96 |
| EL3-1242 | NEONATAL TBG. ELISA | 96 |
| ELI-1239 | NeoNatal TSH. ELISA | 96 |
| EL20-1033 | PR3 (C-ANCA). ELISA | 96 |
| ELI-1039 | Sci70 IgG. ELISA | 96 |
| ELI-1040 | Sm/Rnp. ELISA | 96 |
| ELI-1042 | SSA-IgG (Ro). ELISA | 96 |
| ELI-1043 | SSB (La) IgG. ELISA | 96 |
| ELI-1263 | TESTOSTERONE. ELISA | 96 |
| ELI-1007 | VITAMIN B12. ELISA | 96 |





NG·BIOTECH
LABORATOIRES

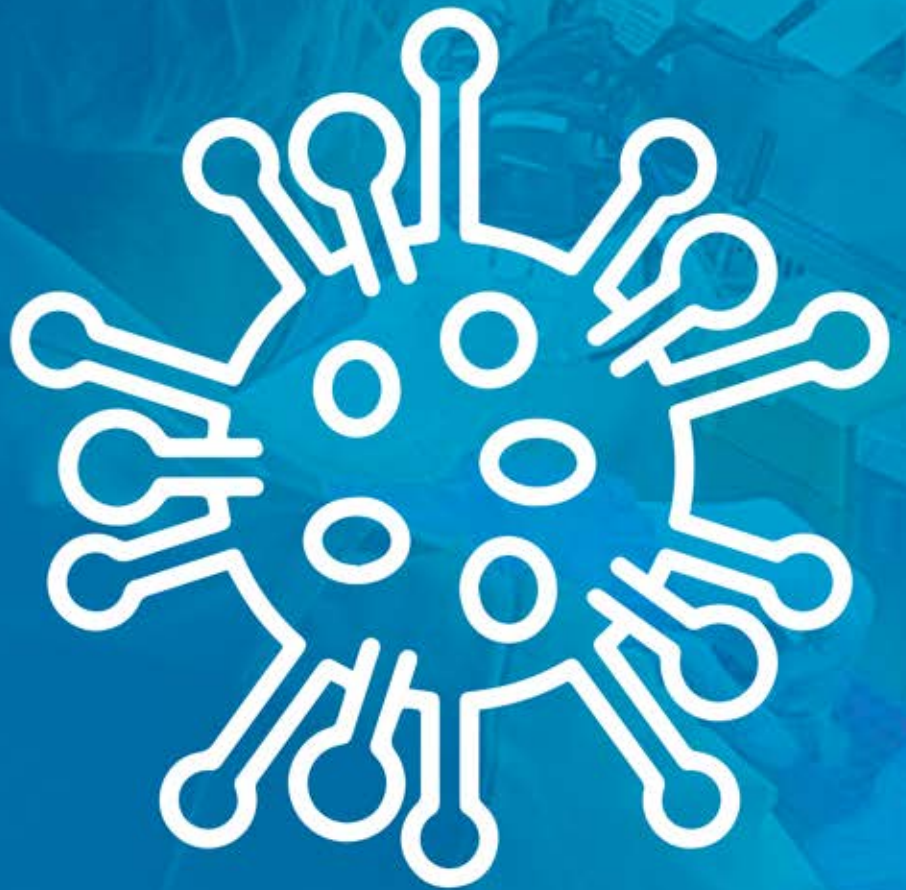


Ciencia para el Diagnóstico Clínico

| CÓDIGO | NOMBRE | TESTS |
|-----------------|--|-------|
| NGB-CAR-S23-004 | NG-Test Carba 5 ®. (Rapid test Carbapenemases KPC, OXA-48, VIM, IMP y NDM) | 20 |
| NGB-COV-S23-028 | NG-TEST COVID-19 Antigen ® | 20 |
| NGB-CTM-S23-016 | NG-Test CTX-M Multi ® .(groups 1, 2, 8, 9, 25 CTX-M β-lactamases) | 20 |
| NGB-MCR-S23-004 | NG-Test MCR-1 ® (Colistin Resistance) | 20 |



NOVATEC
IMMUNDIAGNOSTICA GmbH



BIOKERN LABORATORIO

Ciencia para el Diagnóstico Clínico

| CÓDIGO | NOMBRE | TESTS |
|-----------|---|-------|
| ATOX7460 | AVIDITY TOXOPLASMA GONDII IgG. ELISA | 96 |
| CHLG0510 | Chlamydia pneumoniae IgG. ELISA | 96 |
| CMVG0110 | CYTOMEGALOVIRUS (CMV) IgG. ELISA | 96 |
| CMVM0110 | CYTOMEGALOVIRUS (CMV) IgM. ELISA | 96 |
| EBVG0580 | EPSTEIN BARR VIRUS (EBNA) IgG. ELISA | 96 |
| EBVG0150 | EPSTEIN BARR VIRUS (VCA) IgG. ELISA | 96 |
| EBVM0150 | EPSTEIN BARR VIRUS (VCA) IgM. ELISA | 96 |
| DNOV100 | FERRITIN. ELISA | 96 |
| HELA0220 | HELICOBACTER PYLORI IgA. ELISA | 96 |
| HELG0220 | HELICOBACTER PYLORI IgG. ELISA | 96 |
| HSVIG0500 | HERPES SIMPLEX VIRUS 1 (HSV 1) IgG. ELISA | 96 |
| HSVIM0500 | HERPES SIMPLEX VIRUS 1 (HSV 1) IgM. ELISA | 96 |
| HSV2G0540 | HERPES SIMPLEX VIRUS 2 (HSV 2) IgG. ELISA | 96 |
| HSV2M0540 | HERPES SIMPLEX VIRUS 2 (HSV 2) IgM. ELISA | 96 |
| MEAG0330 | Measles IgG. ELISA | 96 |
| MEAM0330 | Measles IgM. ELISA | 96 |
| MUMG0340 | MUMPS VIRUS IgG. ELISA | 96 |
| MUMM0340 | MUMPS VIRUS IgM. ELISA | 96 |
| MYCG0350 | MYCOPLASMA PNEUMONIAE IgG. ELISA | 96 |
| MYCM0350 | MYCOPLASMA PNEUMONIAE IgM. ELISA | 96 |
| PARG0370 | PARVOVIRUS B19 IgG. ELISA | 96 |
| PARM0370 | PARVOVIRUS B19 IgM. ELISA | 96 |
| RUBG0400 | RUBELLA VIRUS IgG. ELISA | 96 |
| RUBM0400 | RUBELLA VIRUS IgM μ -CAPTURE | 96 |
| CVGQ0970 | SARS-CoV-2 (COVID-19) QUANTITATIVE IgG. ELISA | 96 |
| TAEG0420 | Taenia solium IgG. ELISA | 96 |
| TOXG0460 | TOXOPLASMA GONDII IgG. ELISA | 96 |
| TOXM0460 | TOXOPLASMA GONDII IgM μ -CAPTURE. ELISA | 96 |
| VZVG0490 | VARICELLA-ZOSTER VIRUS (VZV) IgG. ELISA | 96 |
| VZVM0490 | VARICELLA-ZOSTER VIRUS (VZV) IgM. ELISA | 96 |
| BOPM0030 | BORDETELLA PERTUSSIS IgM. ELISA | 96 |
| CHAG0560 | CHAGAS (T. CRUZI) IgG. ELISA | 96 |
| CHLM0510 | Chlamydia pneumoniae IgM. ELISA | 96 |
| RFM3010 | RHEUMATOID FACTOR IgM. ELISA | 96 |



PaxGenBio





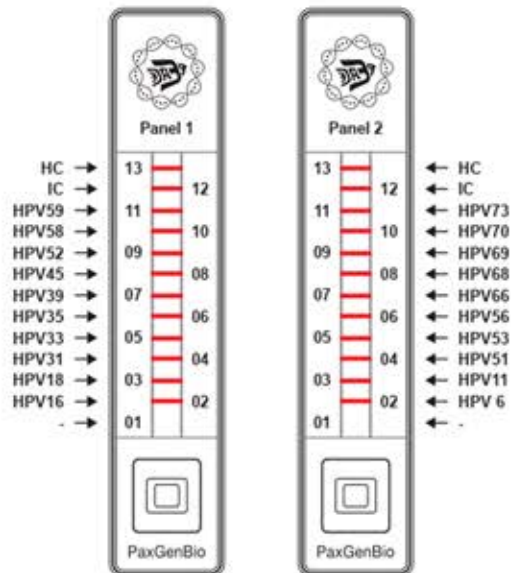
PaxGenBio

CÓDIGO

NOMBRE

TESTS

| CÓDIGO | NOMBRE | TESTS |
|-------------|---------------------------------|-------|
| V0301F | HPV 16/18/ Others MPCR-ULFA Kit | 48 |
| V0324F | HPV 20 Genotyping MPCR-ULFA Kit | 48 |
| V0212EN | ST112 MPCR-ULFA Ex Kit | 48 |
| V0401F | TB/NTM MPCR-ULFA Kit | 96 |
| V0101F | DNA EXTRACTION KIT | 48 |
| TC-24/H (B) | GeneQ Thermal Cycler BIOER | |
| T0301 | ULFA READER | |



 **POLYCHECK**® | A BRAND OF BIOCHECK
Diagnostics made in Germany



| CÓDIGO | NOMBRE | TESTS |
|----------|----------------------|-------|
| 05012050 | AI-STD (14 ANTIGENS) | 12 |

Screening Autoimmune

AMA M2
 CENP B
 dsDNA
 La/SS-B
 MPO
 PCNA
 PM/Sci100
 PR3
 Rib. Phosphopr. Po
 Ro/SS-A 6o
 Scl-70
 Sm
 Tiroglobulina (TG)
 TPO





POLYCHECK® | A BRAND OF BIOCHECK
Diagnostics made in Germany

CÓDIGO

NOMBRE

TESTS

5012019

ATOPIC 20-I (20 ALLERGENS)
PANEL MIXTO

24

Panel de Alergias Atópico Mixto

Albúmina sérica bovina
Alfa Lactoalbúmina
Arroz
Banana
Beta Lactoglobulina
Carne de cerdo
Carne de pollo
Carne de res
Caseína
Cladosporium herbarum / Alternaria alternata
Clara / Yema de huevo
D. Pteronyssinus / D. Farinae
IgE Total
Leche de Vaca
Levadura de panadería
Mezcla de gramas
Mezcla de harinas
Polen de Aliso / Avellano
Polen de Roble / Abedul
Soya





POLYCHECK® | A BRAND OF BIOCHECK
Diagnostics made in Germany

CÓDIGO

NOMBRE

TESTS

5012247

CELIAC DUAL KIT

24 (Para 12 pacientes)*

Screening Celíaco

Factor intrínseco
Gliadina deaminada IgA
Gliadina deaminada IgG
Inmunoglobulina A total
Transglutaminasa tisular IgA
Transglutaminasa tisular IgG



 polycheck.de



BIOKERN

Ciencia para el Diagnóstico Clínico



POLYCHECK®

A BRAND
OF BIOCHECK

Diagnostics made in Germany

CÓDIGO

NOMBRE

TESTS

05012323

EGG COMPONENTS

12

*Panel de Alergias
Huevo y Componentes*

Clara de huevo
Conalbúmina
Lisozima
Ovoalbúmina
Ovomucoide
Yema de huevo





POLYCHECK® | A BRAND
OF BIOCHECK
Diagnostics made in Germany

CÓDIGO

NOMBRE

TESTS

05012610

IMF-10

12

Panel de Alergias
Insectos, Ácaros y Plumás

Aves domésticas

*CCD

D. Pteronyssinus / D. Farinae

IgE Total

Mezcla de cucarachas

Mezcla de plumas

Mosca Negra

Mosquito

Veneno de Abeja

Veneno de Avispa

Veneno de Avispón

*CCD Determinantes de reacción cruzada de los carbohidratos.

 polycheck.de



BIOKERN

Ciencia para el Diagnóstico Clínico



POLYCHECK® | A BRAND OF BIOCHECK
Diagnostics made in Germany

CÓDIGO

NOMBRE

TESTS

05012052.

LIVER/KIDNEY

12

Screening Liver/Kidney

AMA M2
CENP-B
GMB
gp 210
LC1
LKM 1
MPO
PR3
SLA/LP
SP 100





POLYCHECK® | A BRAND OF BIOCHECK
Diagnostics made in Germany

CÓDIGO

NOMBRE

TESTS

05012318

MILK PLUS GLUTEN 6
(6 ALLERGEN)

12

Panel de Alergias Leche + Gluten

Albúmina sérica bovina
Alfa Lactoalbúmina
Beta Lactoglobulina
Caseína
Gluten
Leche de Vaca





POLYCHECK® | A BRAND OF BIOCHECK
Diagnostics made in Germany

CÓDIGO

NOMBRE

TESTS

05012051

MYOSITIS

12

Screening Miositis

Jo-1
Ku
Mi-2
PL-12
PL-7
PM/Sci 100
SRP 54





POLYCHECK® | A BRAND OF BIOCHECK
Diagnostics made in Germany

CÓDIGO

NOMBRE

TESTS

5012056

RHEUMA (14 ANTIGENS)

12

Screening Rheuma

CENP-B
dsDNA
Histona
Jo-1
Ku
Mi-2
PM/Sci 100
Rib. Phosphopr. Po
Scl-70
Sm
SS-A 52
SS-A 60
SS-B
UI-snRNP





POLYCHECK®

A BRAND
OF BIOCHECK

Diagnostics made in Germany

CÓDIGO

NOMBRE

TESTS

05012800.

VENEZUELA FOOD 20

24

Panel de Alergias Alimentos Venezuela

Alfa Lactoalbúmina
Arroz
Atún
Avena
Beta Lactoglobulina
Camarón
Cangrejo
Carne de cerdo
Carne de pollo
Caseína
*CCD
Chocolate
Clara de huevo
Gluten
Harina de trigo
Leche de Vaca
Maíz
Mezcla de cítricos
Mezcla de nueces
Soya
Yema de huevo

*CCD Determinantes de reacción
cruzada de los carbohidratos.





POLYCHECK® | A BRAND OF BIOCHECK
Diagnostics made in Germany

CÓDIGO

NOMBRE

TESTS

05012801.

VENEZUELA INHALATION 20

24

Panel de Alergias Inhalantes Venezuela

Abedul
Acacia
Ambrosia
Artemisa
Aspergillus fumigatus
Blomia tropicalis
*CCD
Cladosporium herbarum
Cucaracha
D. Farinae
D. Pteronyssinus
Epitelio de gato
Epitelio de perro
Epitelio de roedores
Látex
Mezcla de gramas
Mezcla de plumas
Mosquito
Penicillium notatum
Plumas de loro
Roble

*CCD Determinantes de reacción cruzada de los carbohidratos.





Reed
Biotech



 **BIOKERN**

Ciencia para el Diagnóstico Clínico

| CÓDIGO | NOMBRE | TESTS |
|---------|--|-------|
| RE1128H | Human ADA (Adenosine Deaminase) ELISA Kit | 48 |
| RE3174H | Human Zonulin ELISA Kit | 48 |
| RE2687H | Human ELA1 (Elastase 1, Pancreatic) ELISA Kit | 48 |
| RE1544H | Human 1-AT (Alpha 1 - Antitrypsin) ELISA Kit | 48 |
| RE3160H | Human LTF/LF (Lactoferrin) ELISA Kit | 48 |
| RE3155H | Human EPO (Erythropoietin) ELISA Kit | 48 |
| RE2807H | Human IgG1 (InmunoglobulinG1) ELISA Kit | 48 |
| RE3190H | Human IgG2 (InmunoglobulinG2) ELISA Kit | 48 |
| RE1079H | Human HLA-B27 ELISA Kit | 48 |
| RE2121H | Human GHRL (Ghrelin) ELISA Kit | 48 |
| RE2209H | Human GT-34 (Gastrin 34) ELISA Kit | 48 |
| RE2542H | Human Thyroid Stimulating Hormone Receptive | 48 |
| RE2866H | Human IL-2 (Interleukin 2) ELISA Kit | 48 |
| RE3186H | Human IL-6 (Interleukin 6) ELISA Kit | 48 |
| RE1059H | Human IFN- γ (Interferon Gamma) ELISA Kit | 48 |
| RE3187H | Human IL-10 (Interleukin 10) ELISA Kit | 48 |





TM MEDIA[®]



BIOKERN[®]

Ciencia para el Diagnóstico Clínico



MICROBIOLOGÍA

| CÓDIGO | NOMBRE | QTY |
|---------|---|------------|
| TM 1950 | AGAR MEDIUM C (SABOURAUD-GLUCOSE AGAR WITH CHLORAM) | 500GR |
| TBD 001 | AMIKACIN 30 MCG | 5X50 DISCS |
| TBD 003 | AMOXICLAV 30 MCG (AMOXICILLIN/CLAVULANIC ACID 20/10 MCG) | 5X50 DISCS |
| TBD 005 | AMPICILLIN/SULBACTAM 20 MCG (10/10 MCG) | 5X50 DISCS |
| TBD 004 | AMPICILLIN 10 MCG | 5X50 DISCS |
| TMC 001 | ANAEROBIC JAR SYSTEM | |
| TBD 046 | AZTREONAM 30 MCG | 5X50 DISCS |
| TBL 046 | BACITRACIN DISCS (50 DISCS/VL) | 5X50 DISCS |
| TM-1144 | BACTEROIDES BILE ESCULIN AGAR BASE | 500GR |
| TM 1989 | BHI AGAR MODIFIED | 500GR |
| TM 037 | BILE ESCULIN AGAR BASE | 500GR |
| TM 360 | BLOOD AGAR BASE (INFUSION AGAR) | 500GR |
| TM 054 | C.I.E.D. AGAR W/ANDRADE INDICATOR | 500GR |
| 3314 | CARBENICILLIN DISODIUM | 1GR |
| TM 415 | CARY-BLAIR MEDIUM BASE | 100GR |
| TBD 008 | CEFADROXIL (CEPHADROXIL) 30MCG | 5X50 DISCS |
| TBD009 | CEFAZOLIN 30 MCG | 5X50 DISCS |
| TBD049 | CEFEPIME 50 MCG | 5X50 DISCS |
| TBD 012 | CEFOTAXIME (CEPHOTAXIME) 30 MCG | 5X50 DISCS |
| TBD 075 | CEFOXITIN 30 MCG | 5X50 DISCS |
| TBD052 | CEFTAZIDIME / CLAVULANIC ACID 30/10 MCG | 5X50 DISCS |
| TBD 014 | CEFTAZIDIME 30MCG | 5X50 DISCS |
| TBD 013 | CEFTRIAXONE 30 MCG | 5X50 DISCS |
| TBD015 | CEFUROXIME 30 MCG | 5X50 DISCS |
| TBD 015 | CEFUROXIME 30 MCG | 5X50 DISCS |
| TBD016 | CEPHALOTHIN 30 MCG | 5X50 DISCS |
| TM 060 | CETRIMIDE AGAR BASE | 500GR |
| TBD 017 | CHLORAMPHENICOL 30 MCG | 5X50 DISCS |
| TM 1197 | CHROMOGENIC CANDIDA AGAR | 500GR |
| TM-1858 | CHROMOGENIC COLIFORM AGAR (CCA) (ISO 9308) | 500GR |

MICROBIOLOGÍA

| CÓDIGO | NOMBRE | QTY |
|---------|---|------------|
| TM-1632 | CHROMOGENIC ENTEROCOCCUS FAECIUM AGAR | 500GR |
| TM 1199 | CHROMOGENIC UTI AGAR | 500GR |
| TBD 018 | CIPROFLOXACIN 5 MCG | 5x50 DISCS |
| TBD 020 | CLINDAMYCIN 2 MCG | 5x50 DISCS |
| TBD054 | COLISTIN 10 MCG | 5x50 DISCS |
| TM 076 | CORN MEAL AGAR | 500GR |
| TBD 022 | CO-TRIMOXAZOLE 25 MCG (SULPHAMETHOXAZOLE/TRIMETHOPRIM 23,75/1,25 MCG) | 5x50 DISCS |
| TBD 023 | DOXYCYCLINE HCL 30MCG | 5x50 DISCS |
| TM 371 | EMB AGAR LEVINE | 500GR |
| TM 727 | ENTEROCOCCUS CONFIRMATORY AGAR | 500GR |
| TBD 055 | ERTAPENEM 10 MCG 1 VIAL | 100 DISCS |
| TBD 024 | ERYTHROMYCIN 15 MCG | 5x50 DISCS |
| TS 090 | ESCULIN SUPPLEMENT | 0.5G/VL |
| TBD 057 | FLUCONAZOLE 25 MCG | 5x50 DISCS |
| TM 319 | FLUID THIOGLYCOLLATE MEDIUM | 500GR |
| TS 036 | GC SUPPLEMENT W/ANTIBIOTICS | 5VL |
| TM 735 | GELATIN AGAR | 500GR |
| TBD 025 | GENTAMICIN 10 MCG | 5x50 DISCS |
| TBD 060 | GENTAMICIN 120 MCG | 5x50 DISCS |
| TK 004 | GRAM'S STAIN KIT | |
| TBD 061 | IMIPENEM 10 MCG | 5VL |
| TBD 026 | KANAMYCIN 30MCG | 5x50 DISCS |
| TM 141 | KLIGLER IRON AGAR | 500GR |
| TBL 023 | KOVAC'S REAGENT STRIPS. 1 VIAL X 25 STRIPS | |
| TBD 062 | LEVOFLOXACIN 5 MCG | 5x50 DISCS |
| TBD 063 | LINEZOLID 30 MCG | 5x50 DISCS |
| TBD 027 | LOMEFLOXACIN 10 MCG | 5x50 DISCS |
| TM 171 | LYSINE AGAR | 500GR |
| TMH 118 | MACCONKEY AGAR | 500GR |
| TM 202 | MALONATE BROTH | 100GR |

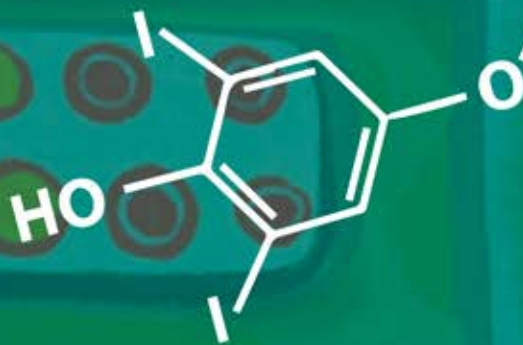
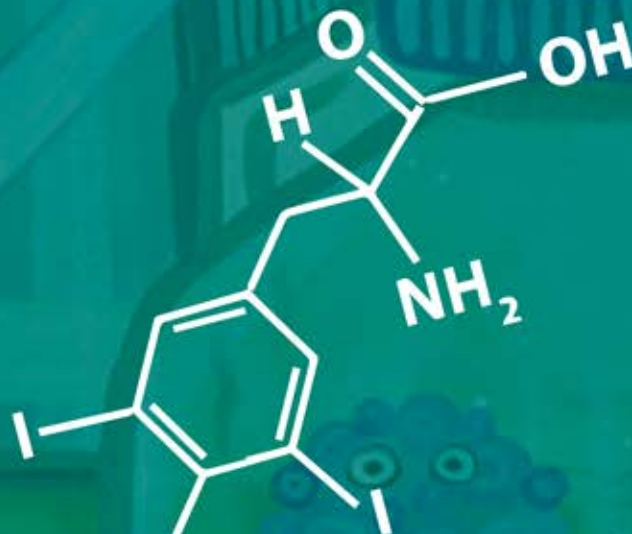
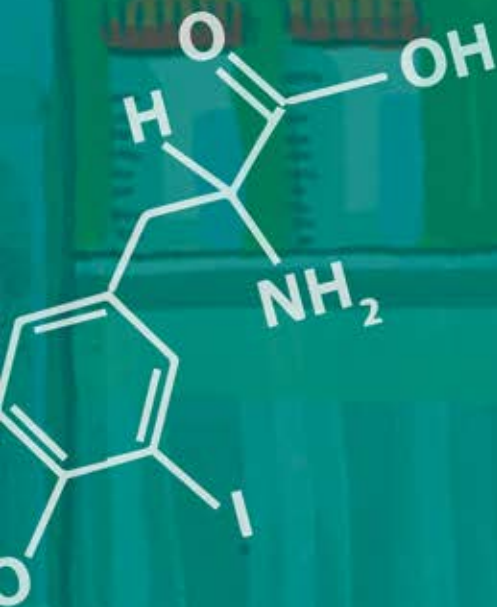


MICROBIOLOGÍA

| CÓDIGO | NOMBRE | QTY |
|---------|---|------------|
| TM 206 | MANNITOL SALT AGAR BASE | 500GR |
| TBD 028 | MEROPENEM 10 MCG 1 VIAL | 100 DISCS |
| TM 186 | MIO MEDIUM (MOTILITY INDOLE ORNITHINE MEDIUM) | 500GR |
| TM 339 | MUELLER HINTON AGAR . | 500GR |
| TBD 029 | NALIDIXIC ACID 30 MCG | 5X50 DISCS |
| TS 020 | NALIDIXIC SELECTIVE SUPPLEMENT. . | 5VL |
| TBD 031 | NITROFURANTION 300 MCG | 5X50 DISCS |
| TBD 032 | NORFLOXACIN 10 MCG | 5X50 DISCS |
| TM 341 | NUTRIENT AGAR | 500GR |
| TBD 033 | OFLOXACIN 5MCG | 5X50 DISCS |
| TBL 029 | ONPG DISCS. 1 VIAL | 5X50 DISCS |
| TBD 066 | OXACILLIN 1 MCG | 5X50 DISCS |
| TBL 030 | OXIDASE DISCS | 5X50 DISCS |
| TBD 034 | PENICILLIN-G 10 UNITS | 5X50 DISCS |
| TBD 068 | PIPERACILLIN/TAZOBACTUM 100/10 MCG | 5X50 DISCS |
| TBD 036 | POLYMXIN-B 100 UNITS | 5X50 DISCS |
| TM 348 | SIMMONS CITRATE AGAR | 500GR |
| TM 345 | SOYA CASEIN DIGEST AGAR | 500GR |
| TM 386 | SS AGAR (SALMONELLA SHIGELLA AGAR) | 500GR |
| TM 596 | STANDARD NUTRIENT AGAR | 500GR |
| TBL 056 | STERILE DISCS 1 VIAL | 5X50 DISCS |
| TM 2345 | STREPTOCOCCUS AGALCTIAE SELECTIVE AGAR BASE | 500GR |
| TM 420 | STUART TRANSPORT MEDIUM | 500GR |
| TM 436 | TCBS AGAR (VIBRIO SELECTIVE AGAR) | 500GR |
| TBD 072 | TEICOPLANIN 30 MCG | 5X50 DISCS |
| TBD 040 | TETRACYCLINE 30 MCG | 5X50 DISCS |
| TBD 073 | TICARCILLIN 75MCG | 5X50 DISCS |
| TS 030 | UREA 40% | 5ML/VL |
| TM 394 | UREA AGAR BASE (CHRISTENSEN) | 500GR |
| TBD 044 | VANCOMYCIN 30 MCG | 5X50 DISCS |
| TBD 074 | VORICONAZOLE 1 MCG | 5X50 DISCS |
| TM 492 | XLD AGAR | 500GR |
| TK 001 | ZN ACID FAST STAIN KIT | |



XEMA



 **BIOKERN** LABORATORIOS

Ciencia para el Diagnóstico Clínico



| CÓDIGO | NOMBRE | TESTS |
|--------|-------------------------------------|-------|
| K226 | (M12) CA 15.3. ELISA | 96 |
| K217 | 17-OH-PROGESTERONE. ELISA | 96 |
| C51 | ACETYLSALICYLIC ACID (ASS) ALLERGEN | 280 |
| K225 | AFP EIA. ELISA | 96 |
| F76 | ALPHA-LACTOALBUMIN ALLERGEN | 280 |
| C50 | AMPICILIN ALLERGEN | 280 |
| K110 | ANTI HCV. ELISA | 96 |
| K1121 | ANTI HIV (0), II/P24. ELISA | 96 |
| K132 | ANTI-TG. ELISA | 96 |
| K161 | ANTI-TISSUE TG IGA. ELISA | 96 |
| K160 | ANTI-TISSUE TG IGG. ELISA | 96 |
| K131 | ANTI-TPO. ELISA | 96 |
| F13 | ARACHIS HYPOGAEA (MANÍ) ALLERGEN | 280 |
| K121 | ASPERGILLUS IGG. ELISA | 96 |
| F77 | BETA-LACTOALBUMIN ALLERGEN | 280 |
| I6 | BLATELLA GERMANICA. ELISA | 280 |
| D5 | BLOMIA TROPICALES ALLERGEN | 280 |
| K222 | CA 125. ELISA | 96 |
| K223 | CA 19.9. ELISA | 96 |
| K244 | CA 72-4. ELISA | 96 |
| F78 | CASEIN ALLERGEN | 280 |
| K224 | CEA. ELISA | 96 |
| C55 | CEPHALOSPORIN ALLERGEN | 280 |
| F81 | CHEDDAR CHEESE ALLERGEN | 280 |
| C108 | CIPROFLOXACIN ALLERGEN | 280 |
| K470 | CIRCULATING IMMUNE COMPLEXES. ELISA | 96 |
| FX19 | CITRUS MIX ALLERGEN | 280 |
| K103 | CMV IGG. ELISA | 96 |
| K103M | CMV IGM. ELISA | 96 |
| F52 | COCOA ALLERGEN | 280 |
| F8 | CORN ALLERGEN | 280 |
| K210 | CORTISOL. ELISA | 96 |
| F2 | COW'S MILK ALLERGEN | 280 |
| F23 | CRAB ALLERGEN | 280 |



| CÓDIGO | NOMBRE | TESTS |
|--------|-----------------------------------|-------|
| I71 | CULEX PIPIENS (MOSQUITO) ALLERGEN | 280 |
| D2 | D.FARINAE ALLERGEN | 280 |
| D1 | D.PTERONYSSINUS ALLERGEN | 280 |
| K182A | DEAMINATED GLIADIN IGA. ELISA | 96 |
| K182G | DEAMINATED GLIADIN IGG. ELISA | 96 |
| K215 | DHEA-S. ELISA | 96 |
| C79 | DICLOFENAC ALLERGEN | 280 |
| F1 | EGG WHITE ALLERGEN | 280 |
| F75 | EGG YOLK ALLERGEN | 280 |
| K208 | ESTRADIOL. ELISA | 96 |
| K213 | FREE T3. ELISA | 96 |
| K219 | FREE TESTOSTERONE. ELISA | 96 |
| K203 | FSH. ELISA | 96 |
| C60 | GENTAMYCIN ALLERGEN | 280 |
| F79 | GLUTEN-GLIADIN ALLERGEN | 280 |
| K204 | GROWTH HORMONE. ELISA | 96 |
| K119A | H. PYLORI IGA. ELISA | 96 |
| K119 | H. PYLORI IGG. ELISA | 96 |
| K119M | H. PYLORI IGM. ELISA | 96 |
| K009 | HBSAG. ELISA | 96 |
| K205 | HCG. ELISA | 96 |
| K239 | HE4. ELISA | 96 |
| K104 | HSV 1/2 IGG. ELISA | 96 |
| K104M | HSV 1/2 IGM. ELISA | 96 |
| C78 | IBUPROFEN ALLERGEN | 280 |
| K202 | LH. ELISA | 96 |
| C82 | LIDOCAINE/XYLOCAIN ALLERGEN | 280 |
| F32 | LIMON ALLERGEN | 280 |
| C88 | MEVIPACAIN ALLERGEN | 280 |
| K106 | MYCOPLASMA IGG. ELISA | 96 |
| K106M | MYCOPLASMA IGM. ELISA | 96 |
| K234 | NSE. ELISA | 96 |
| F9 | OYZA SATIVA (ARROZ) ALLERGEN | 280 |
| C85 | PARACETAMOL ALLERGEN | 280 |



| CÓDIGO | NOMBRE | TESTS |
|--------|-------------------------------|-------|
| C1 | PENICILLOYL G ALLERGEN | 280 |
| C2 | PENICILLOYL V ALLERGEN | 280 |
| F72 | PINEAPPLE ALLERGEN | 280 |
| C77 | PIROXICAM ALLERGEN | 280 |
| C83 | PROCAINE ALLERGEN | 280 |
| K251 | PROCALCITONINA. ELISA | 96 |
| K207 | PROGESTERONE. ELISA | 96 |
| K206 | PROLACTIN. ELISA | 96 |
| K231 | PSA LIBRE IEA. ELISA | 96 |
| K221.5 | PSA TOTAL. ELISA | 480 |
| K221 | PSA TOTAL IEA. ELISA | 96 |
| K262 | PTH ELISA. ELISA | 96 |
| K102 | RUBELLA IGG. ELISA | 96 |
| K102M | RUBELLA IGM. ELISA | 96 |
| K237 | SCC (A). ELISA | 96 |
| F24 | SCHRIMP ALLERGEN | 280 |
| K276 | SECRETORY IGA. ELISA | 96 |
| K268 | SHBG. ELISA | 96 |
| F14 | SOYBEAN ALLERGEN | 280 |
| K200S | SPECIFIC IGE. ELISA | 96 |
| K211 | T3 TOTAL. ELISA | 96 |
| K212 | T4 EIA. ELISA | 96 |
| K214 | T4 LIBRE. ELISA | 96 |
| K209 | TESTOSTERONE. ELISA | 96 |
| K232 | THYROGLOBULIN. ELISA | 96 |
| K200. | TOTAL IGE. ELISA | 96 |
| K200 | TOTAL IGE. ELISA | 96 |
| K101 | TOXOPLASMA IGG. ELISA | 96 |
| K101M | TOXOPLASMA IGM. ELISA | 96 |
| K111G | TREPONEMA PALLIDUM IGG. ELISA | 96 |
| K201 | TSH. ELISA | 96 |
| F4 | WHEAT ALLERGEN | 280 |



NUESTRAS MARCAS





Contáctanos para pedidos y consultas.
Nuestros especialistas en ventas estarán
siempre disponibles para ayudarte.

BIOKERN C.A

☎ (+58) 412.391.1137

✉ atencion.cliente@biokern.com.ve

🌐 www.biokern.com.ve

📍 AV. PASEO LOS ANDES, CC. LA COLINA NIVEL C1 Y C2, LOCAL C1-02 Y C2-04, URB LAS MINAS, S.A.A. MIRANDA 1204