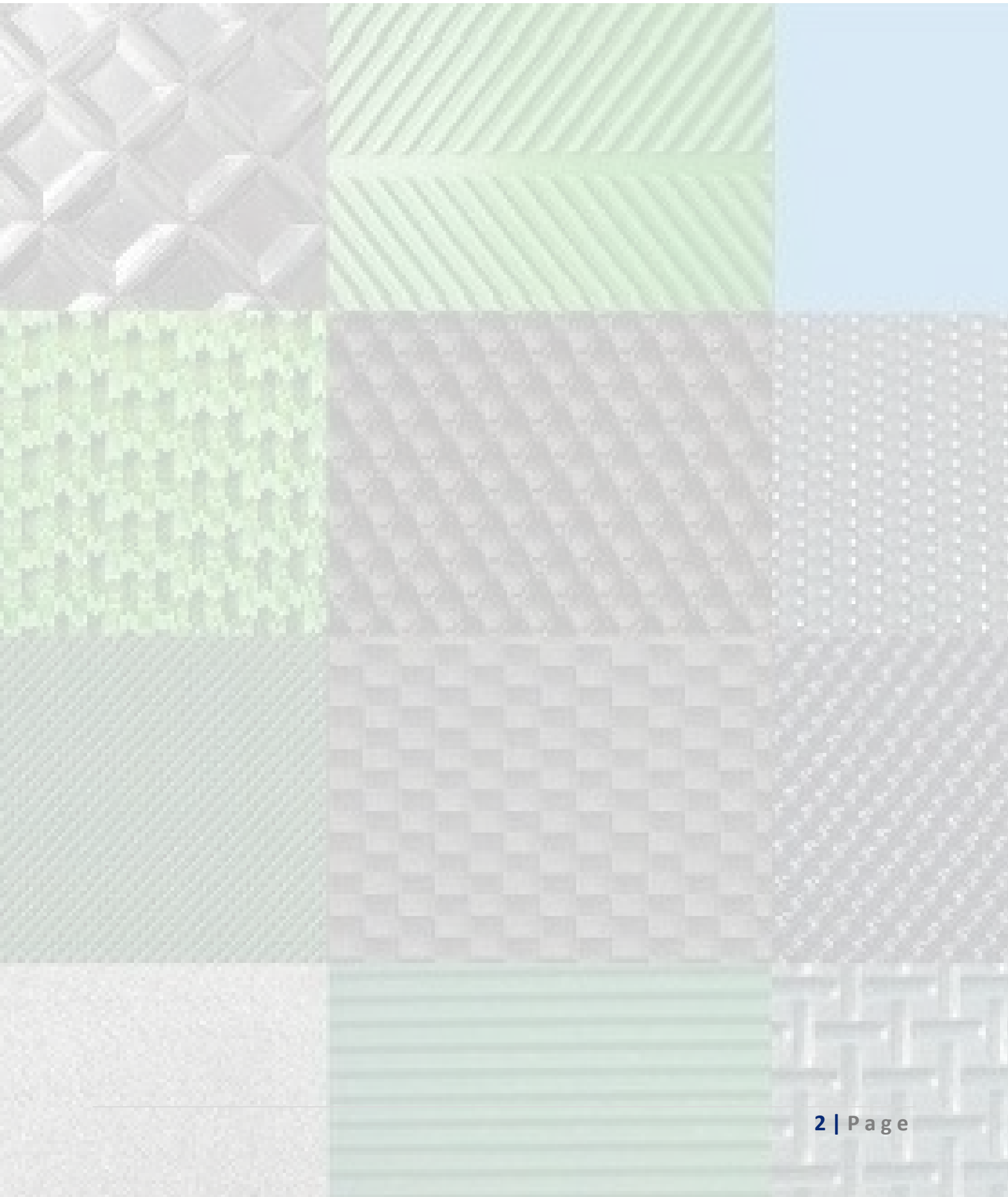


JMA CONVEYOR PRODUCTS - LIGHT-DUTY BELTING



2021 YEAR





JMA Conveyor Products Profile

Established in 2017, JMA conveyor products has been rapidly transformed from mere conveyor belt re-sale, into an engineering company that integrates design, selection, sales, storage, maintenance and repair services for Australian customers.



JMA's office has located in Melbourne, Australia since 2020, it provides belting selection, engineering, warehousing, inspection, installation and splicing, emergency repair, and after-sales services for the entire Australian region.

We offer over nearly 10 years' experience in supplying an extensive range of high-quality light-duty conveyor belting and conveyor accessories for recycling site, food and beverage factory, sport and treadmill equipment, logistic company, supermarket, and others. Except reinforced multi-ply fabric belting, steel cord belting, solid woven belting, sidewall belting and specialized belting is manufactured to meet and exceed stringent Australian and International Standards,

JMA also provides a complete product ranges of different light-duty conveyor belts coated with material like PVC, PU, PVK, PE, TPEE, Silicone and felt belt, which applicable in various industries.

Our team pride ourselves in providing superior, tailored products and services to our clients.

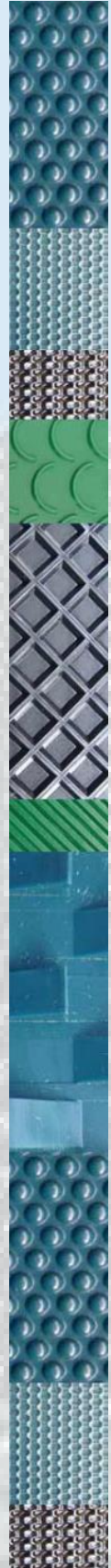


“Small enough to care, big enough to deliver”

IMPORTANT NOTE FOR ALL DESIGNERS AND DRAFTSPERSONS

The information contained in this catalogue is dimensional only

To ensure any product selection performed provides the end users with the lowest total cost of ownership we have provided at the last page of this catalogue a design submission sheet. If you require us to design/select specific equipment, please complete the submission sheet and forward to our technical engineer. This selection process may result in some dimensions of the selected equipment differing from those stated in this catalogue.





JMA Light-Duty Belt List

- Quality Assurance6
- Product Range7
- Application8
 - Food Industry8
 - Sport and Treadmill.....10
 - Wood Industry12
 - Coil Warp Belt14
- JMA Product Patterns15
- JMA Light Duty Roller18
- Notes19

Quality Assurance

ISO 9001 and ISO 14001 certification at our factory ensures that the JMA product range is of the highest quality in meeting Australian customer demands. Through continuous improvement, research, development, and technical innovation, the JMA product range is manufactured to suit specific application and performance requirements. We also offer design and innovation solutions to meet our customer specified requirements, prevent damage in transit and for secure storage.

Any JMA Conveyor Product is available independently tested in Australia, meeting and exceeding the customer's requirements. We are also able to manufacture to DIN, BS, JIS and SANS standards.



Product Range

JMA manufactory has 16 production lines and the total production quantities exceed 3.339.000 square meters and had a turnover of 65.000.000 USD. We built up a solid reputation by designing and manufacturing high quality products in an innovative way for a variety of markets. The markets include the food industry, logistics and airports, tobacco, post, automotive industry, wood industry, sport, and treadmills etc.

PVC Belts



PU Belts



PU Timing belts



Treadmill Belts



PE Belts



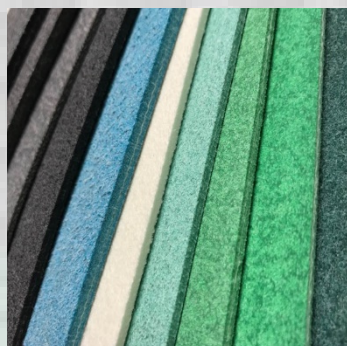
Silicone Belts



PVK Belts



Felt Belts

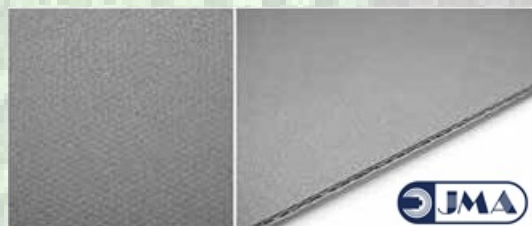


Application

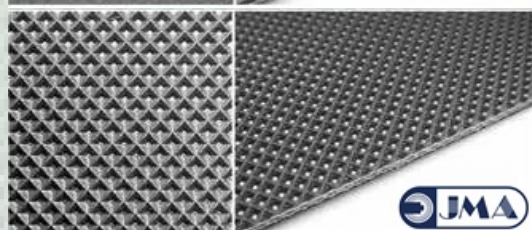
Food Industry



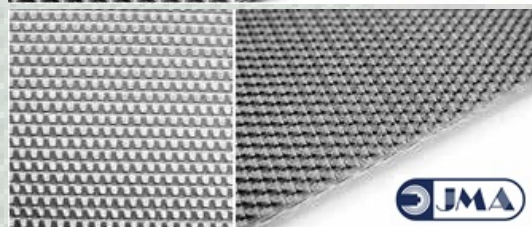
JMA Belts can supply an extensive food and Baking conveyor and processing belt range featuring high- quality coating materials suitable for all modern food production steps. These food conveyor belts offer excellent features for all types of food processing, release properties even for very sticky foodstuff, wear- and abrasion-resistant coatings, and sophisticated chemical resistance to cope with common cleaning agents and food ingredients. Our belts deliver outstanding performance and a superior service life, as well as full compliance with EU and FDA regulations.



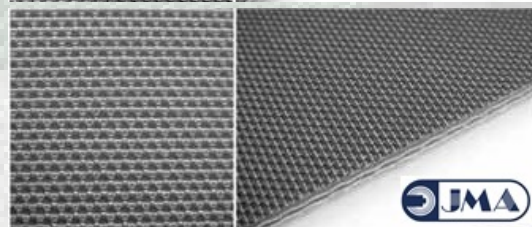
Product Code: JMA-MATT
Product Name: Matt
Thickness: -
Property: Non adhesive surface
Width: 3000mm



Product Code: JMA-DIA2
Product Name: Diamond 2mm
Thickness: 0.6 mm
Property: Non adhesive surface
Width: 3000mm

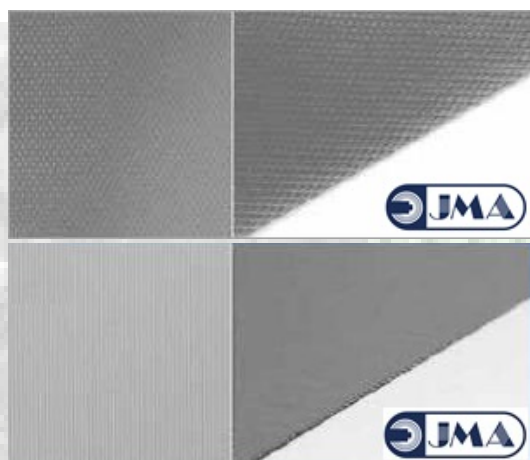


Product Code: JMA-RTFA
Product Name: Rough texture fabric
Thickness: 0.3 mm
Property: Non adhesive surface
Width: 3000mm



Product Code: JMA-TEXT
Product Name: Texture
Thickness: 0.1 mm
Property: Non adhesive surface
Width: 1000mm

JMA LIGHT-DUTY BELT CATALOGUE



Product Code: JMA-MIDI
Product Name: Mini diamond
Thickness: 0.2 mm
Property: Non adhesive surface
Width: 1500mm

Product Code: JMA-IMFA
Product Name: Imitation fabric
Thickness: 0.1 mm
Property: Non adhesive surface
Width: 1500mm

Data sheet

Product Code	Type	Color	Surface	Material	Thickness mm	Tension for 1% elongation N/mm	Minimum dimeter pullly N/mm	Temperature °C	Application
391101	U7/0A-W	White	Matt	TPU	0.7	4	6	-20/+80	Food industry
391131	U8/0-W DS	White	Matt	TPU	0.8	4	8	-20/+80	Food industry, small shrinkage in heavy oil environments
S10407	U12-24W DS	White	Smooth	TPU	1.0	4	8	-20/+110	After woven, small shrinkage in heavy oil environments
S10309	U11/0-B DS	Blue	Matt	TPU	1.05	4	8	-20/+80	Food industry, small shrinkage in heavy oil environments
S10321	U11/28-B DS	Blue	Texture fabric	TPU	1.05	4	8	-20/+80	Dough conveying, non adhesive surface, small shrinkage in heavy oil environments
391103	U12/0GA-W	White	Matt	TPU	1.2	4	10	-20/+80	Food industry, anti-wrapping
391105	U12/1A-W	White	Diamond	TPU	1.2	4	8	-20/+80	Food industry, good release
391146	UU12GHA-W	White	Smooth	TPU	1.5	4	8	-20/+100	Food industry, cut resistant
392101	U10FAI-T	-	Impregnate fabric	TPU	1.1	6	8	-20/+80	Dough conveying, non adhesive surface
321004	U20-07B	-	Fabric	TPU	1.35	6	8	-20/+120	Cookie mold belt, good release
392201	U13/0A-W	White	Matt	TPU	1.3	6	8	-20/+80	Food industry,
392215	U13/0A-B	Blue	Matt	TPU	1.3	6	8	-20/+80	Food industry,
392437	U13/0-B FL AM	Blue	Matt	TPU	1.3	6	8	-20/+80	Food industry, frayless
392468	U13/0LA-B (1596) AM	Dark blue	Matt	TPU	1.3	6	8	-40/+80	Cooling food conveyor antibacterial and mildewproof
392236	U13/0R-W	White	Matt	TPU	1.3	6	8	-20/+80	Curve belt
S10482	U13/2A-B (1596) AM	Dark blue	Rough texture fabric	TPU	1.4	8	8	-20/+80	Cooling food conveyor, antibacterial
392205	U15/0A-W	White	Matt	TPU	1.5	8	20	-20/+80	Cooling conveyor (edge sealing)
322030	U22-24/26A	White	Rough texture fabric	TPU	1.6	8	20	-20/+80	Dough conveying, non adhesive surface
S10446	U2-2/0WA	White	Matt	TPU	1.4	12	30	-20/+110	After woven
492211	E14/0-W	White	Matt	TPO	1.4	5	8	-20/+80	General conveying belt, non adhesive surface

Sport and Treadmill

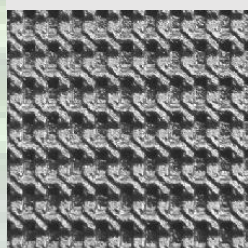


JMA Treadmill Belts come in various thicknesses, different top cover patterns, antistatic coating compounds, low noise fabric, long lifespan and high precision for both home and gym purposes. Pre-tensioning will allow our treadmill belts to run smoothly on treadmill decks, which makes jogging a real enjoyment.

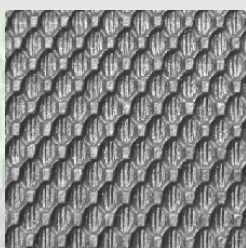
JMA's treadmill belts apply the regulations of REACH, PAHS, ROHS.

JMA also successfully provide treadmill Belt for racing horse.

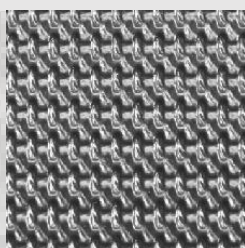
Top Cover Pattern



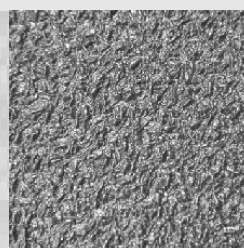
Code: JMA-COTE
Name: Coarse textured



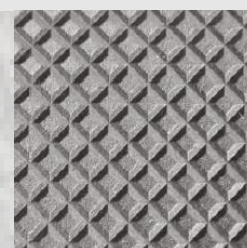
Code: JMA-GOLF
Name: Golf



Code: JMA-MIGO
Name: Mini golf

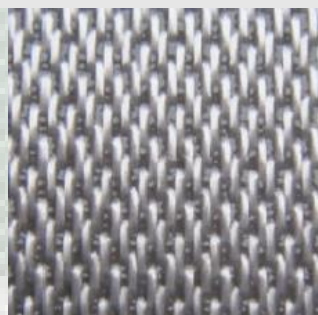


Code: JMA-SABL
Name: Sand blast



Code: JMA-SHDI
Name: shallow Diamond

Bottom Fabric Type



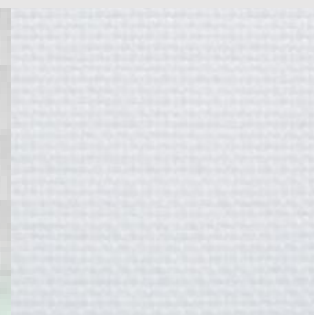
Code: POLY
Name: Polyester



Code: Spun A



Code: Spun B



Code: Spun C

Data Sheet

JMA Code	Belt Type	Top Pattern	Bottom Fabric	Ply No.	Belt Thickness Mm	Weight Kg/M ²	Effective pull at 1% elongation N/mm	Min. Pulley Diameter mm	Temperature Range °C
JMA-TR-022	S14/31	JMA-SABL	POLY	1	1.4	1.3	5	30	-15 - 60
JMA-TR-023	S15/7	JMA-GOLF	POLY	1	1.5	1.4	5	30	-15 - 60
JMA-TR-008	S16/1	JMA-SHDI	SPUN A	2	1.6	1.5	7	40	-15 - 60
JMA-TR-002	S18	JMA-GOLF	SPUN A	2	1.8	1.5	7	40	-15 - 60
JMA-TR-003	S23	JMA-GOLF	SPUN A	2	2.3	2.0	8	50	-15 - 60
JMA-TR-004	S25	JMA-GOLF	SPUN C	2	2.5	2.2	8	50	-15 - 60
JMA-TR-025	S32	JMA-MIGR	SPUN C	2	3.2	3.0	10	60	-15 - 60
JMA-TR-026	S46	JMA-COTE	SPUN C	2	4.6	4.0	10	80	-15 - 60

Standard Treadmill Belt Types

Function	Belt Thickness	Belt Type Code
Leisure	>1.8mm	S15/7, S14/31, S16/1, S18
Sport	2.0 mm – 3.0mm	S23, S25
athlete	3.0 mm – 5.0 mm	S32, S46

JMA team is experienced in conveyor belting industry. Consideration of the various standards and specifications are applied in treadmill belts, such as top cover pattern, working noise, splice and joint method, lubrication methods, etc, our team would like to tightly cooperate with our clients and customize and design the belt for different devices. Once the design is fixed, we will archive and ensure product consistency and completeness for subsequent orders through complete Quality management system according to ISO9001.

Wood Industry



JMA provide a wide range of conveyor belt with wear-resistance and quick splicing process in the wood manufacturing processing, since we fully understand Australian client's requirement for operating economy and efficiency. From client point of view, JMA light-duty belt can meet the specific application processing requirement at low running cost.

Excellent Chemical Resistance

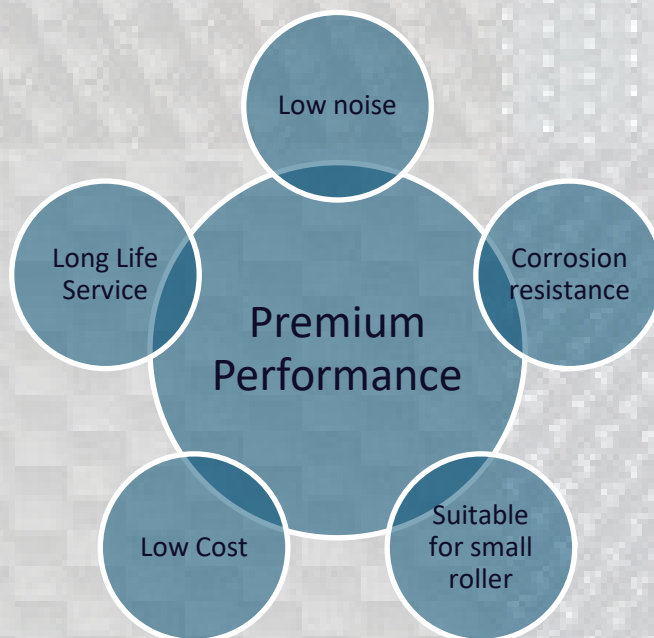
JMA wood processing belts have good chemical resistance performance, which ensure the belt free from chemicals and avoid the chemicals or wood dust to adhere.

Advanced manufacturing technology

Along with continuous innovation and technology upgrading, JMA wood processing belts is low elongation, stable size, low noise in lifelong, which provides a good working environment and minimized unscheduled downtime.

Durable and premium service time

Thanks for the robust Quality Management System, JMA wood processing belts consistently own a good performance for various manufacturing process, such as including sanding, forming, pre-press etc..



JMA LIGHT-DUTY BELT CATALOGUE

Data Sheet

Product Code	Type	Colour	Surface	Material	Thickness mm	Tension for 1% elongation N/mm	Minimum diameter pulley mm	Temperature °C	Application
122015	P25-74/0A	Deep blue green	Matt	PVC	2.0	8	40	-15 / +80	General
122260	P25-84/0W	Blue	Matt	PVC	2.0	12	25	-15 / +90	Forming
122149	P25-75/0A	Deep blue green	Matt	PVC	3.0	8	60	-15 / +80	General
122033	P22-16/19D	Green	Longitudinal rib	PVC	3.1	10	60	-20 / +60	Slab transport
122044	P22-16/3D	Green	Roughtop	PVC	5.3	10	60	-20 / +60	Inclined transportation
122042	P22-46/14HD	Gray	Herringbone	PVC	5.5	10	80	-20 / +60	Inclined transportation
S10463	WP60-P	Deep blue green	Smooth	PVC	5.8	48	250	-15 / +80	Prepress
133004	P32-36H	Black	Smooth	PVC	7.0	14	120	-20 / +60	Sanding
133005	P32-36/13	Black	Square	PVC	8.5	18	100	-20 / +60	Sanding
133029	P32-36/28	Black	Capsule stud	PVC	8.5	18	100	-20 / +60	Sanding
133080	WL12-GY	Gray	Square (12mm)	PVC	9.5	22	90	-20 / +60	Sanding + high friction
144001	P42-14	Green	Smooth	PVC	5.0	22	180	-15 / +80	General
S10192	WL12H-GY	Gray	Square (12mm)	PVC	10.0	30	120	-20 / +60	Sanding + high friction
392238	U17/0-W	White	Matt	TPU	1.7	18	25	-20 / +80	Plane transportation
S10514	U18/0A-W HM	White	Matt	TPU	1.8	18	25	-20 / +80	Forming + non adhesive surface
393302	U40/0K-N	Black	Matt	TPU	3.8	75	350	-20 / +80	TPU prepress + high strength
103003	M25	Black	Felt	Felt	4.0	10	100	-15 / +80	anti-scratches
S10523	E30/1S	Lucency	Smooth / Diamond	PE	3.0	16	80	-20 / +60	spraying
S10261	YL-35E/25R	Green	Rough Texture Fabric	LRR	2.5	18	50	-20 / +70	high-speed conveyor
S10283	YL-55E/30R	Green	Rough Texture Fabric	LRR	3.0	26	70	-20 / +70	high-speed conveyor

Note: JMA has a set of conveyor belt products especially suitable for the special needs of the wood industry. There are many kinds of surface patterns to choose, which can be used in the production and manufacture of medium and high-density board, particle board etc. Welcome to consult the details.

Coil Warp Belt



JMA wrapper belts are used primarily in the steel and aluminium industries for the purpose of wrapping strips. Steel and aluminium strips are hot coiled, cold coiled and later processed to be used at various industries, such as automotive, electrical appliances, construction material, steel pipes and steel office equipment. They vary by thickness, hardness, surface treatment and chemical compositions. It is crucial to select the right wrapper belt for the right application and process.

Solid woven type (CMU - SW)

- Excellent elastic characteristics
- High force of elongation
- Suitable for steel strip wrapping

Felt type (CMU - EK)

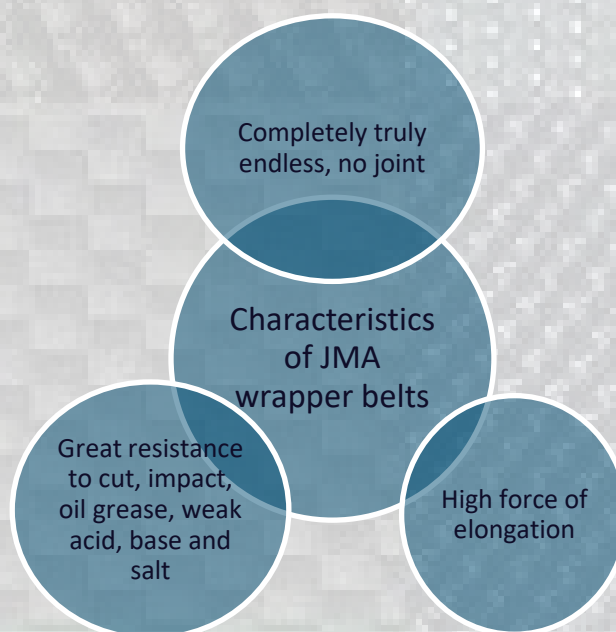
- Provides high flexibility, accuracy of dimensions and excellent uniform thickness.
- Suitable for aluminium strip wrapping.

High temperature resistant type (CMU - HSW)

- Excellent elastic characteristics
- High force of elongation
- High temperature resistant (up to 400° Celsius) Suitable for aluminium strip wrapping

Steel wire construction type (CMU - SWC)

- Extremely high force of elongation.
- Suitable for thick steel strip wrapping.



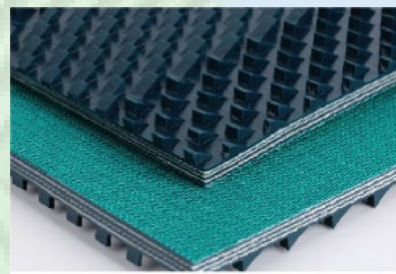
JMA Product Patterns



Code: 43L9



Code: 14PU



Code: 43JZ



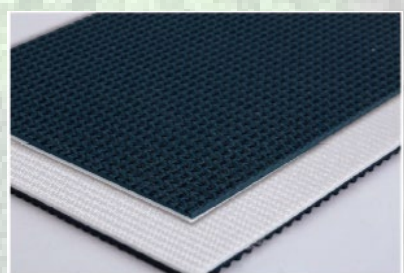
Code: 34YZ



Code: 34SG



Code: 33Y6



Code: 23B5



Code: 22YL



Code: 22W1



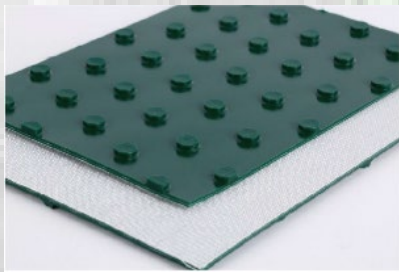
Code: 34W3



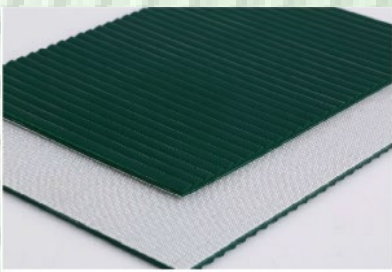
Code: 12DI



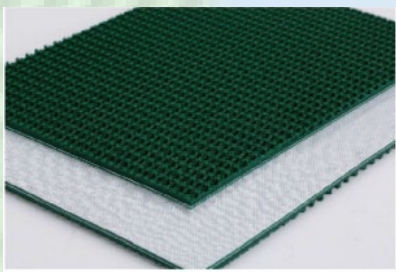
Code: PEDI



Code: 21YD



Code: 21CY



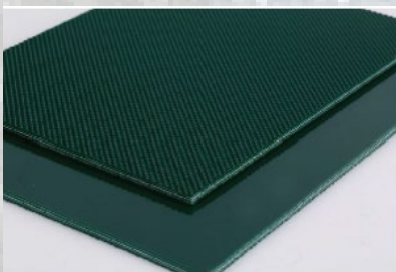
Code: 21C5



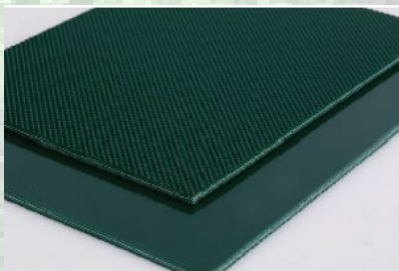
Code: 33L5



Code: 33D7



Code: 31PS



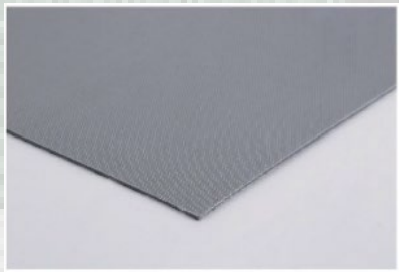
Code: 21Z3



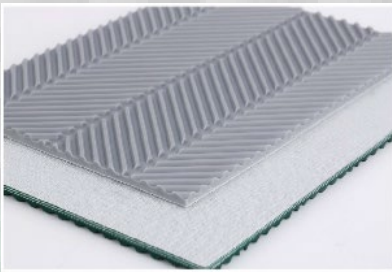
Code: 21BC



Code: 31CB



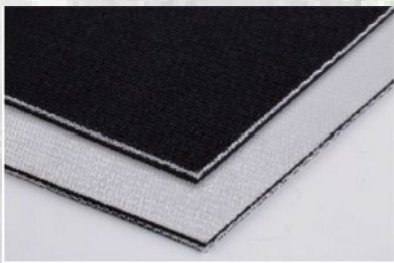
Code: 25W2



Code: 25RZ



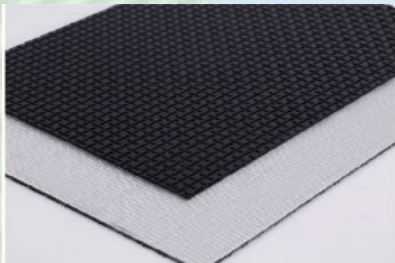
Code: 24V2



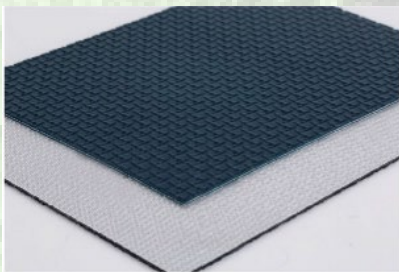
Code: 24N4



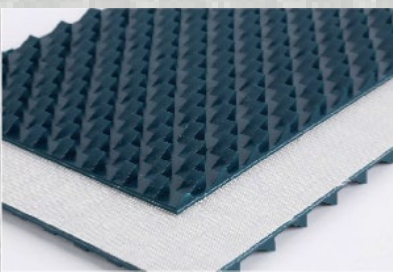
Code: 24GL



Code: 24G3



Code: 23XG



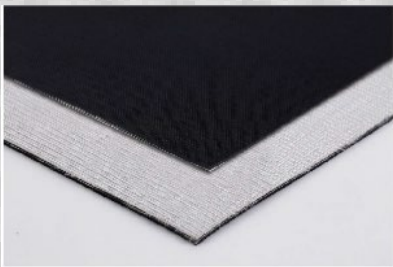
Code: 23JZ



Code: 23FC



Code: 24S3



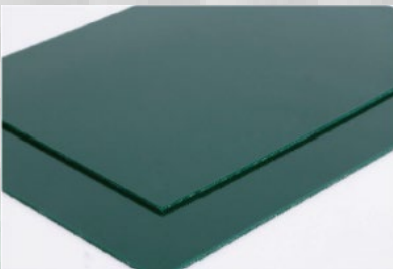
Code: 24BW



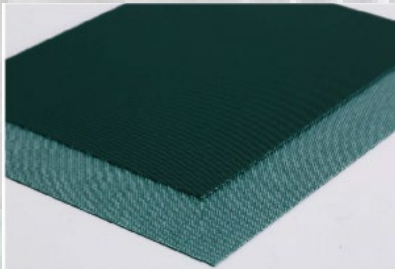
Code: 23FB



Code: PVK1






Code: 11PP

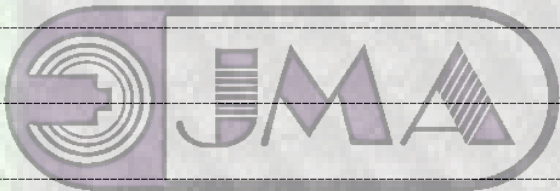


Code: 11PU

JMA Light Duty Roller

Con. Type	Type	Part Code	Character	Material
Gravity Conveyor		JMA-LDR-GC1	MID DUTY LOW NOISE MOISTURE PROOF	GALVANIZED STEEL STAINLESS STEEL ALUMINUM ALLOY PVC / PU
		JMA-LDR-GC2	MID DUTY DURABLE DUST PROOF	GALVANIZED STEEL STAINLESS STEEL ALUMINUM ALLOY PVC / PU LAGGING
		JMA-LDR-GC3	HEAVY DUTY LOW NOISE HIGH SPEED	GALVANIZED STEEL STAINLESS STEEL ALUMINUM ALLOY PVC / PU LAGGING
		JMA-LDR-GC4	TAPER LOW NOISE DUST PROOF	GALVANIZED STEEL STAINLESS STEEL PVC / PU LAGGING
		JMA-LDR-GC5	HEAVY DUTY DUST PROOF DURABLE	GALVANIZED STEEL POWER COATING
		JMA-LDR-GC6	LIGHT DUTY WATERPROOF LIGHT WEIGHT	ALUMINUM ALLOY PVC / PU
O-ring Conveyor		JMA-LDR-OC1	LIGHT DUTY LOW NOISE ANTISTATIC	GALVANIZED STEEL STAINLESS STEEL
Single or Double Sprockets Roller Conveyor		JMA-LDR-SC1	LIGHT DUTY PLASTIC SPROCKET LOW NOISE	GALVANIZED STEEL STAINLESS STEEL ALUMINUM ALLOY
		JMA-LDR-SC2	MID DUTY STEEL SPROCKET DUST PROFF	GALVANIZED STEEL STAINLESS STEEL ALUMINUM ALLOY
		JMA-LDR-SC3	HEAVY DUTY STEEL SPROCKET DURABLE	GALVANIZED STEEL STAINLESS STEEL

Notes



CONVEYOR
PRODUCTS



CONVEYOR PRODUCTS

EMAIL: Sales@jmaustralia.com.au

TEL: 1800 975 038

ADDRESS: Factory 5 / 7 Nevada Court,
Hoppers Crossing, 3029 VIC

WEBSITE: www.jmaustralia.com.au