

BOHO HOOPS PG. 24



SW GEOMETRIC PG. 3



PETITE STARS PG. 18



GEO FACE PG. 24

LAZZERED

2021-2022  
COLLECTION

[WWW.LAZZERED.COM](http://WWW.LAZZERED.COM)

LAZZERED

PRESENTS

## 2021 COLLECTION

*An elegant mix of  
modern designs  
and natural  
copper luster.*

LAZZERED is a Phoenix, Arizona based design & manufacturing company specializing in laser cut copper jewelry & home decor. Our in-house production allows us to offer quality items at affordable prices.



MADE IN THE USA  
100% DOMESTICALLY SOURCED COPPER



**BEAR FETISH**  
1.75" x 1.25" • CE-BEAR

Bears are typically revered for their strength and wisdom making them poignant Spiritual Guides.

**ROADRUNNER**  
1.65" x 1.2" • CE-RRUN  
The desert's favorite speedster, shown here with a traditional Southwest sun.



**MID-CENTURY MODERN CACTUS**  
1.5" x 1.5" • CE-MCMC

A Mid Century Modern representation of a desert staple.



**POTTED CACTUS HOOPS**  
1.5" x 1.5" • CE-PTCS

A whimsical Southwestern version of a Saguaro cactus.



[VIEW EARRINGS ONLINE](#)



**THUNDERBIRD**  
1.75" x 2" • CE-TBRD

A North American Indian symbol of a powerful bird who is said to release lightning from its beak and rolling thunder from its wings.



**KOKOPELLI**

.75" x 1.75" • CE-KOKO  
The Native American deity presides over both childbirth and agriculture. He is a trickster god, seen as a flute player representing the spirit of music.



**ARROWS**  
.35" X 2" • CE-ARRW

A downward pointing arrow is a subtle statement of peace. These earrings feature contrasting geometric shapes for an asymmetrical look.

**SOUTHWEST GEOMETRIC**  
.75" x 1.25"  
CE-SWGE

A modern take on Southwestern geometric designs

Also available with Turquoise gemstones.



CE-SWGET



## AUTUMN LEAVES

1.25" x 1.75" • CE-AUTL

This view of the inner structure of a leaf shows nature's beauty at its core.



## PALM LEAF

1.25" x 1.5" • CE-PLML

A tropical vibe regardless of whether you are on the beach or in the boardroom.



## LOTUS HOOPS

1.5" x 1.5" • CE-LTSH

In Hinduism, the Lotus is symbolic of life, eternal youth, purity, and divinity.



## MARY JANE

1.25" x 1.25" • CE-MRYJ

Mary Jane's stylized fashion statement surrounded by a hoop design.



## TREE OF LIFE

1.25" x 1.25"  
CE-TRLF

The Tree of Life is an ancient symbol that represents physical and spiritual growth, union and fertility.





**QUEEN BEE**  
1.75" x 1.5" • CE-QBEE

The Queen Bee is the heartbeat of the family. Let the special woman in your life know how much you treasure her.



*Available with or without Citrine Gemstones*

CE-QBEEC

## CAT SWIRL

.75"w x 1"t • CE-CTSW

A small, demure cat with reversed-out swirling tail.



**DRAGONFLY**  
1.5" x 1.75" • CE-DFLY

These dragonfly earrings follow the ornamental Art Nouveau style, characterized by its elegant organic lines.



**BUTTERFLY**  
1.75" x 1.5" • CE-BFLY

Masters of metamorphosis, butterflies remind us to leave the past behind and accept that which makes you stronger.



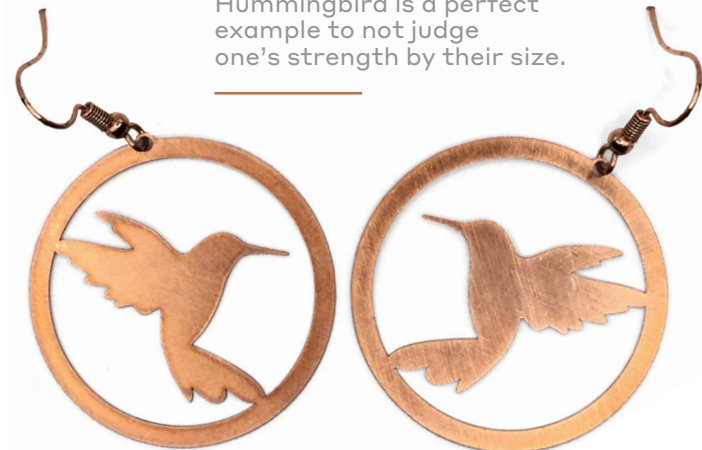
*Available with or without Amethyst Gemstones*

CE-BFLYA



**HUMMINGBIRD HOOPS**  
1.5" x 1.5"  
CE-HUMH

The delicate, but resilient Hummingbird is a perfect example to not judge one's strength by their size.





## CELTIC HEARTS

1.25" x 1.25" • CE-CTHRT

Four interlocking hearts create a continuous, looping Celtic knotwork. A symbol of eternal love.

## LOVECATS

.75" x 1" • CE-LOVC

What's not to love about this duo of intertwined cat and kitten? Purrfect for the cat lover in your life.



## EAT, PRAY, LOVE

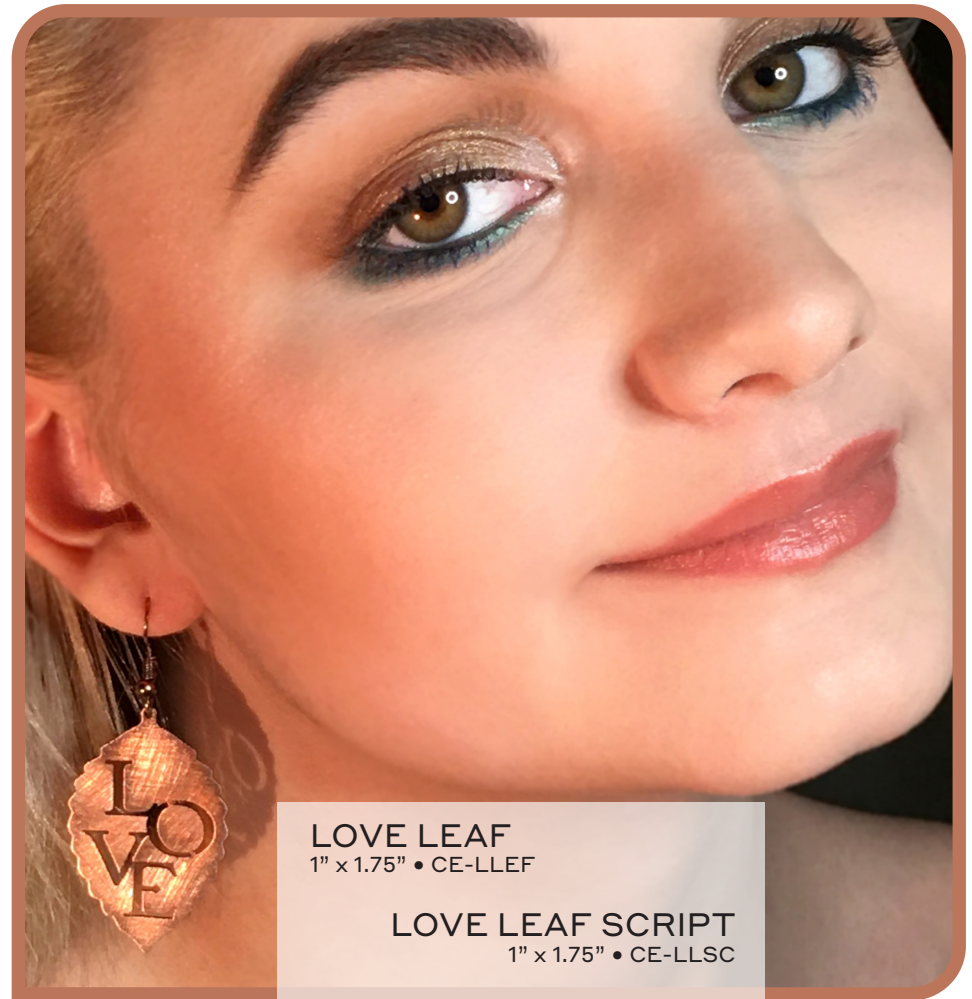
1.75" x 1.35" • CE-EPRL

The recipe for a whole and happy life.

## HEART DIAMOND

1.3" x 1.75" • CE-HRTD

Diamonds are forever, so give her your heart in a diamond.



## LOVE LEAF

1" x 1.75" • CE-LLEF

## LOVE LEAF SCRIPT

1" x 1.75" • CE-LLSC

If you love nature, you can find beauty everywhere.

A poignant gift for your Nature Lover.





## HEART CROSS

1.5" x 2" • CE-HTCS

Show your faith, pride and love. A meaningful gift for a Confirmation, First Communion or Baptism.



## 4 HEART CROSS

1.5" X 1.85" • CE-4HCS

The number 4 directly relates to God's ability to create and reflects the four seasons and four elements of Creation.



## STAINED GLASS CROSS

1.5" x 2" • CE-SGCS

These gorgeous crosses give the illusion of decorative cathedral windows.



## FLEURY CROSS

1.5" x 2" • CE-FLCS

The Fleury Cross is adorned at the ends with fleur-de-lis, representing faith, wisdom and chivalry.



## OPEN CROSS

1.5" x 2" • CE-OPNCS

An open, elegant cross suitable for any occasion.

## SOLID BENEDICT CROSS

1.5" x 2" • CE-SBCS

A silhouette of the cross of St. Benedict, the patron saint of Europe.



## TAU CROSS

1" x 1.25" • CE-TAUCS

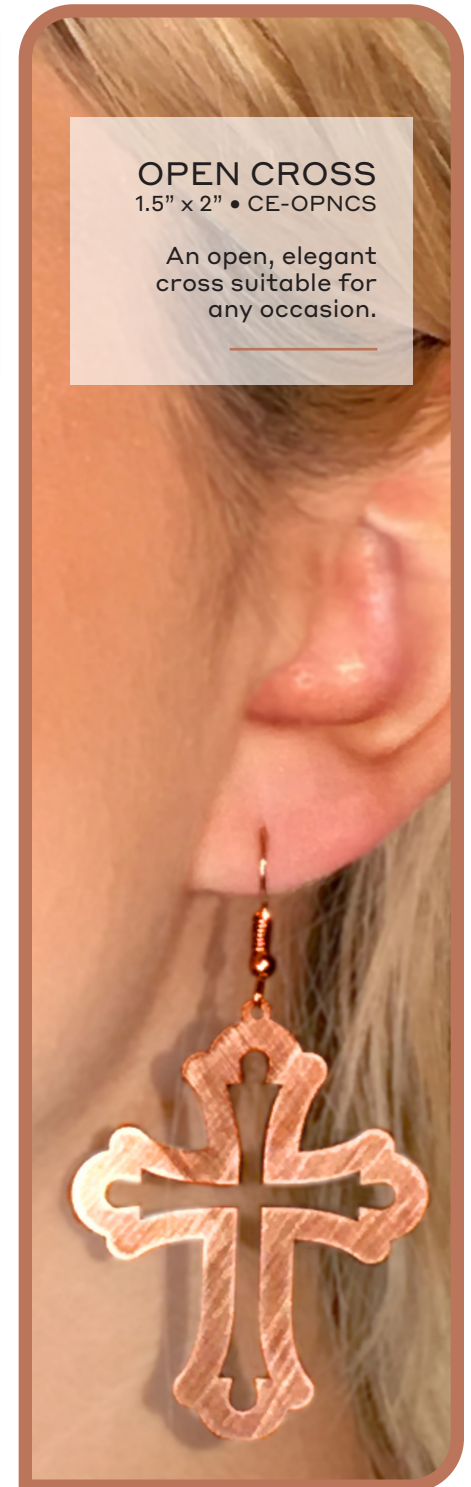
A Franciscan sign of conversion, used by St. Francis as his personal signature.



## SIMPLE CROSS

1.5" x 2" • CE-SIMCS

A simple, yet classic cross.





**VECTOR EQUILIBRIUM**

1.25" x 1.25" • CE-VCEQ

Represents the "perfect state" in order to balance chaotic energy and obtain a perfect state of equilibrium.



**SEED OF LIFE**

1.25" x 1.25" • CE-SOFL

The seven intertwining circle of the Seed of Life are symbolic of the seven days of creation and used as a powerful fertility amulet for women.



**MERKABAH**

1" x 1.5" • CE-MERK

Merkabah translates to "light, body, and spirit," the opportunity tap into our inner potential when energies are united.

**TRISKELION**

1.5" x 1.5" • CE-TRISK

The Triskelion is an ancient symbol used by the Greeks, Celts, Buddhists and Christians. It has many meanings associated with the number 3; Birth-Life-Death, the Holy Trinity, Past-Present-Future.



**META CUBE**

1.5" x 1.5"

CE-MTCU

The divine pattern often used as a balanced focal point for meditation



**FIBONACCI**

1" x 1.5" • CE-FIBO

Also known as the "Golden Spiral," this sequence is nature's secret code said to govern the dimensions of everything from mathematics to art and even the Universe.







## EYE OF HORUS

1.25" x 1.25" • CE-EOFH

In Ancient Egypt the Eye of Horus was used as a symbol of protection to ward off evil and to protect the pharaoh in the afterlife.

## FLEUR DE LIS

1" x 1.25" • CE-FLDLIS

French for "flower of lily" the fleur-de-lis has been a long-used symbol of royalty, honor, grandeur, faith and unity.



## SHOU

1.25" x 1.25" • CE-SHOU

The Chinese symbol for longevity.



## EVIL EYE AMULET

1.5" x 1.5" • CE-EEAM

The Evil Eye is a protective symbol. When worn, the Evil Eye shields the wearer from curses, and reflects the bad intentions back on the caster.



## OM

1.25" x 1.25" • CE-OMOM

Om is the sacred mantra of the Hinduism, Buddhism, and Jainism practices. The sound connects the chakras and celebrates the creative energies of the Universe.





## TRIQUETRA

1.35" x 1.35" • CE-TRIQ

An ancient never-ending Celtic loop that has become symbolic for things that are three-fold; The Holy Trinity, 3 fundamental elements, past-present-future, life-death-rebirth.

## CELTIC CROSS

1.25" w x 1.75" t • CE-CTCS

The widely used Celtic cross features a ring surrounding a Christian cross to symbolize the Sun.



## CELTIC KNOTWORK CROSS

1.5" X 1.85" • CE-CTKN

Celtic knots are formed using one continuous line, with no beginning and no end. An unending pattern of the infinite.



*Available with or without Malachite Gemstones*

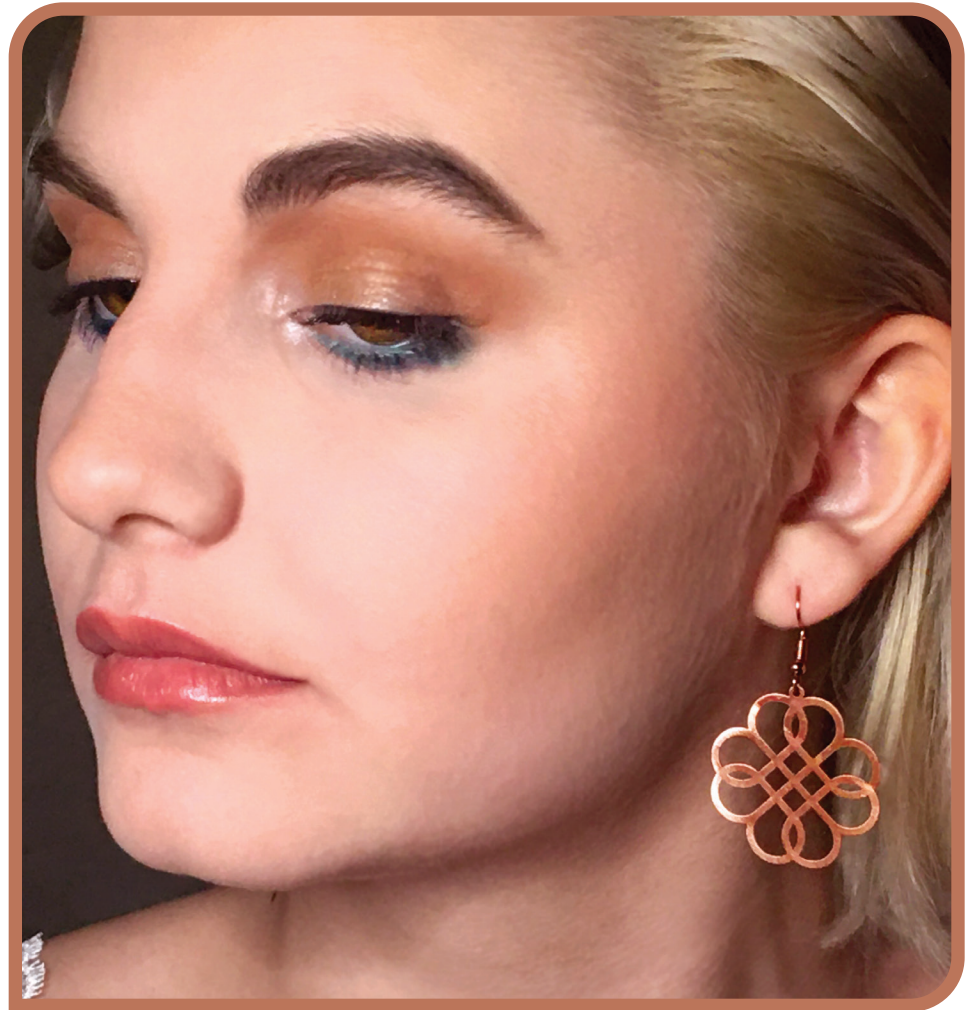
## CELTIC SHIELD

1.5" x 1.75" • CE-CTSH

A variation of a Celtic Shield Knot has been used for centuries as protection from enemies and illness.



CE-CTSHM



## CELTIC HEARTS

1.25" x 1.25" • CE-CTHRT

Four interlocking hearts create a continuous, looping Celtic knotwork. A symbol of eternal love.





**DOUBLE STAR**  
1.5" x 1.5" • CE-DSTR  
A falling star within an open star reveals a continuing celestial pattern.

**PETITE STARS**  
.75" x .75" • CE-PSTAR

These small stars are a subtle accent to the "true star" in your life.



**THUNDERBOLT OF LIGHTNING**  
.75" x 1.75" • CE-THNDR

Two simple, yet powerful designs, reminiscent of the retro days of rock n' roll.



**STARDUST LIGHTNING**  
.75" x 1.75" • CE-STARD



**OPEN STAR**  
1.25" x 1.25"  
CE-OPSTR

A fun and out-of-this-world compliment to any outfit.





## CLASSIC COGS

1.25" x 1.25" • CE-CCOG

A simple, yet classic set of Steampunk Cogs.



## STEAMPUNK STARS

1.5" X 1.5" • CE-SPSTR

A dynamic, star-themed Steampunk cog.



## STEAMPUNK LOVELACE

1.3" X 1.75"  
CE-SPLOV

A clockwork of Steampunk cogs combine in this stylish, modern interpretation of the Victorian Industrial-Steam Age. Named after Ada Lovelace, an innovative Victorian-Era mathematician.



## STEAMPUNK DELUXE

1.25" X 1.75" • CE-SPDLX

Four linking cogs create this complex Steampunk design.

# GEOMETRIC / ABSTRACT

2021 *LAZZERED* COPPER  
EARRINGS COLLECTION



**SPAGHETTI**  
1.75" x 2" • CE-SPAGH

Abstract designs create this truly unique statement piece.

**DIAMOND DROPS**  
1" x 1.25" • CE-DDROP

These modern stylized diamonds mimic the facets of a diamond stone, but are versatile for just about any occasion.



**GEO CUBE**  
1" x 1.5" • CE-GEOCB

A sleek, modern design sure to stand out with any outfit.



**1**  
CE-RDSP1

**2**  
CE-RDSP2

**ROUND SPIRALS 1 & 2**  
1" x 1.25"

The universal symbol of evolution and creativity, the spiral can also be found everywhere in nature.

Two available versions of the beloved Spiral design.



VIEW EARRINGS ONLINE



**ART DECO  
DIAMONDS**  
1" x 1.75" • CE-ADDIA

An elegant Art Deco design reminiscent of "The Great Gatsby."

**SQUARE SPIRAL**  
1" x 1.25" • CE-SQSP

A square version of the classic spiral, gives this a Southwestern vibe.



**DIAMOND SPIRAL**  
1" x 1.25" • CE-DIASP

A diamond-shaped version of the Square Spiral.

# GEOMETRIC / ABSTRACT

2021 *LAZZERED* COPPER  
EARRINGS COLLECTION



## GEO FACE

2" x 2" • CE-GEOFA  
This round abstract portrait of a woman creates a piece of wearable modern art. Based on the oil painting "Geometric 3-Face" by Christy A. Moeller.



## WAVE

1.2" x 2" • CE-WAVE

This gentle wave has an abstract 3-dimensional illusion while also invoking a modern Bohemian spirit.



## CU ELEMENT

1" x 1" • CE-CUELE

Element #29 of the Periodic Table. It is literally Copper made of copper. A great gift for your chemistry/ science lover.

## BOHO HOOPS

1.5" x 1.5" • CE-BOHOOP

A real statement piece, with modern cutouts on a classic hoop. Versatile enough to go perfectly with anything from a pair of jeans to a flowing wrap dress.



# NECKLACES

See our matching earrings on pages 2-24

All necklaces are hung on a black 18" Vegan Leather Cord with Alloy Lobster Clasp.



CELTIC CROSS  
CN-CTCS



CELTIC  
HEARTS  
CN-CTHT



TRIQUETRA  
CN-TRIQ



CELTIC SHIELD  
CN-CTSH



TRISKELION  
CN-TRISK



META CUBE  
CN-MTCU

# NECKLACES

See our matching earrings on pages 2-24.

All necklaces are hung on a black 18" Vegan Leather Cord with Alloy Lobster Clasp



SHOU  
CN-SHOU



EYE OF HORUS  
CN-EOFH



BEAR FETISH  
CN-BEAR



KOKOPELLI  
CN-KOKO



VECTOR  
EQUILIBRIUM  
CN-VCEQ



EVIL EYE AMULET  
CN-EEAM



POTTED CACTUS  
CN-PTCS



MARY JANE  
CN-MRYJ



OM  
CN-OMOM



SEED OF LIFE  
CN-SOFL



GEO FACE  
CN-GEOFA



STEAMPUNK  
LOVELACE  
CN-SPLOV

# NECKLACES

See our matching earrings on pages 2-24.

All necklaces are hung on a black 18" Vegan Leather Cord with Alloy Lobster Clasp





# NECKLACES

See our matching earrings on pages 2-24.



STARDUST  
LIGHTNING  
CN-STARD



DOUBLE STAR  
CN-DSTAR



OPEN STAR  
CN-OPSTR



PETITE  
STAR  
CN-PSTAR



DRAGONFLY  
CN-DFLY



BUTTERFLY  
CN-BFLY



[VIEW NECKLACES ONLINE](#)

# ORNAMENTS/ WINDOW HANGINGS



SAGUARO CACTUS  
3" x 3"  
CO-SGCAC



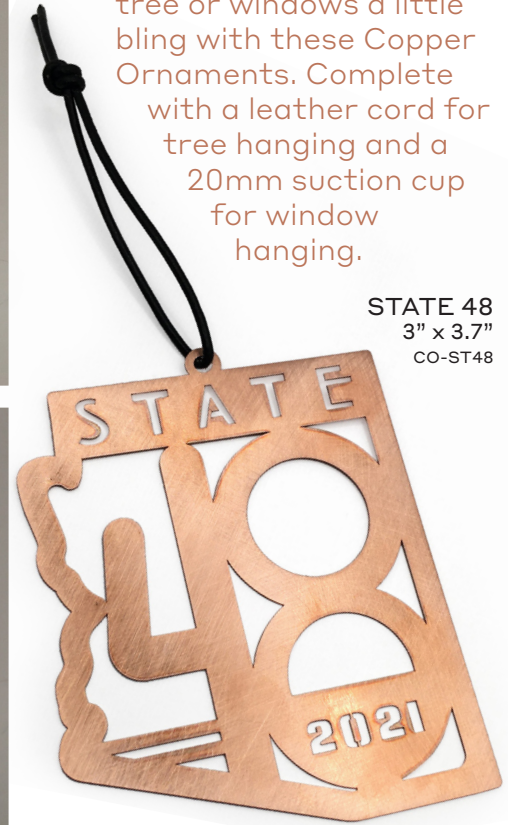
PRICKLY PEAR  
CACTUS  
3" x 3"  
CO-PPCAC



BARREL CACTUS  
3" x 3"  
CO-BRCAC



AGAVE CACTUS  
3" x 3"  
CO-AGCAC



STATE 48  
3" x 3.7"  
CO-ST48

Give your Christmas tree or windows a little bling with these Copper Ornaments. Complete with a leather cord for tree hanging and a 20mm suction cup for window hanging.



[VIEW ORNAMENTS ONLINE](#)

# NIGHTLIGHTS

All nightlights measure 3.5" x 3.5"  
(3.5" x 5.25" with fixtures)



**SAGUARO  
CACTUS**  
CNL-SAGCACT



**PRICKLY  
PEAR  
CACTUS**  
CNL-PPCACT



**BARREL  
CACTUS**  
CNL-BARCACT



**AGAVE  
CACTUS**  
CNL-AGVCACT



[VIEW NIGHTLIGHTS ONLINE](#)

# BOOKMARKS

Bewitching bookmarks becoming  
of any brilliant bibliophile.



**ACOUSTIC  
GUITAR**  
1.6" x 5.5"  
CB-ACGTR

**ELECTRIC  
GUITAR**  
1.3" x 5.5"  
CB-ELGTR

**OCTOPUS  
TENTACLE**  
2.25" x 5"  
CB-OCTO

**ALICE IN  
WONDERLAND**  
2" x 5"  
CB-ALICE



**CATS 2-PACK**  
2" x 4.5" & 1.75" x 2.5"  
CB-CATS

**OCEANS  
2-PACK**  
1.5" x 2.65"  
1.65" x 3"  
CB-OCNS

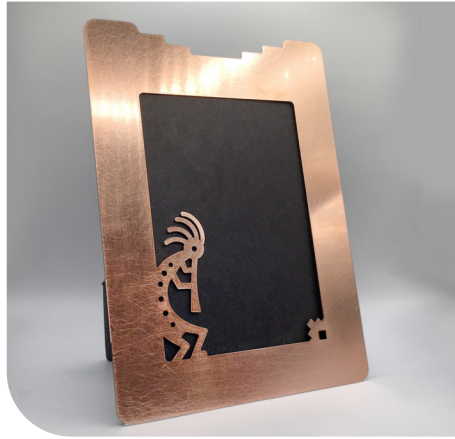
**TO BE CONTINUED**  
3.75" x 2"  
CB-CONT

**CELTIC**  
1.5" x 2.5" • CB-CTHT



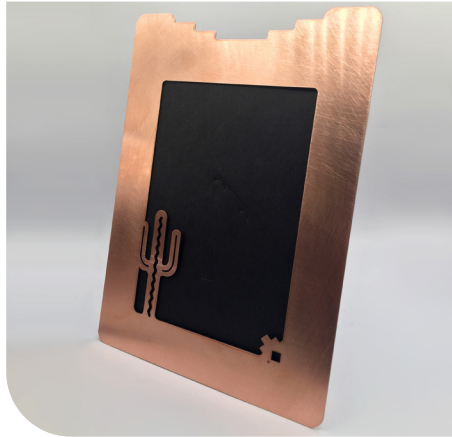
[VIEW BOOKMARKS ONLINE](#)

# PICTURE FRAMES A perfect highlight for your most precious memories.



**KOKOPELLI**  
SMALL: CF-KOSM  
LARGE: CF-KOLG

This copper frame features an iconic representation of Kokopelli, the Native American deity. Usually seen as a flute player to represent the spirit of music, but who also presides over childbirth and agriculture.

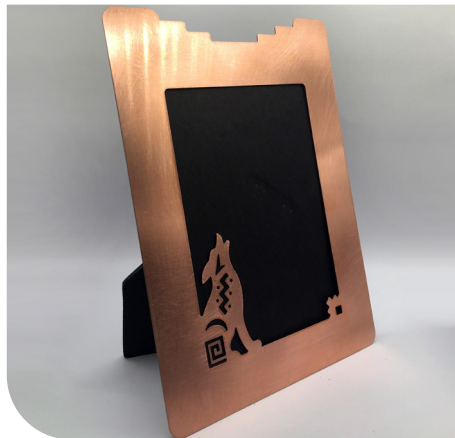


**CACTUS**  
SMALL: CF-CASM  
LARGE: CF-CALG

A Saguaro cactus mixed with Southwestern motifs.

**SMALL FRAMES:**  
Photo Area: 3.5" x 4.75"  
Outer Frame Dimensions:  
4.75" x 6.625"

**LARGE FRAMES:**  
Photo Area: 5" x 7"  
Outer Frame Dimensions:  
7.25" x 10"



**COYOTE**  
SMALL: CF-COSM  
LARGE: CF-COLG

A howling coyote mixed with Southwestern motifs.

Each frame features a black, velvety back panel that latches shut and hinges to sit at a 20° angle.



[VIEW FRAMES ONLINE](#)

# RETAIL PRICE LIST

## EARRINGS OF COPPER COLLECTION

Hung on wooden display cards and packaged in padded gift boxes.



### SOUTHWEST - Pages 2-3

CE-BEAR Bear Fetish	\$29.00
CE-RRUN Roadrunner	\$29.00
CE-PTCS Potted Cactus Hoops	\$29.00
CE-MCMC Mid-Century Modern Cactus	\$29.00
CE-TBRD Thunderbird with Turquoise	\$34.00
CE-KOKO Kokopelli	\$29.00
CE-ARRW Arrows	\$29.00
CE-SWGE SW Geometric	\$29.00
CE-SWGET SW Geometric-Turquoise	\$34.00

### NATURE - Pages 4-5

CE-AUTL Autumn Leaves	\$29.00
CE-PLML Tropical Palm Leaf	\$29.00
CE-LTSH Lotus Hoops	\$29.00
CE-MRYJ Mary Jane	\$29.00
CE-TRLF Tree of Life	\$29.00

### ANIMALS - Pages 6-7

CE-QBEE Queen Bee	\$29.00
CE-QBEEC Queen Bee - Citrine	\$34.00
CE-CTSW Cat Swirl	\$29.00
CE-DFLY Dragonfly	\$29.00
CE-BFLY Butterfly	\$29.00
CE-BFLYA Butterfly - Amethyst	\$34.00
CE-HUMH Hummingbird Hoops	\$29.00

### LOVE - Pages 8-9

CE-CTHRT Celtic Hearts	\$29.00
CE-LOVC Lovecats	\$29.00
CE-EPRL Eat, Pray, Love	\$29.00
CE-HRTD Heart Diamond	\$29.00
CE-LLEF Love Leaf	\$29.00
CE-LLSC Love Leaf Script	\$29.00

### CROSSES - Pages 10-11

CE-HTCS Heart Cross	\$29.00
CE-4HCS Four Heart Cross	\$29.00
CE-SGCS Stained Glass Cross	\$29.00
CE-FLCS Fleury Cross	\$29.00
CE-SBCS Solid Benedict Cross	\$29.00
CE-TAUCS Tau Cross	\$29.00
CE-SIMCS Simple Cross	\$29.00
CE-OPNCS Open Cross	\$29.00

### SACRED GEOMETRY - Pages 12-13

CE-VCEQ Vector Equilibrium	\$29.00
CE-SOFL Seed of Life	\$29.00
CE-MERK Merkabah	\$29.00
CE-TRISK Triskelion	\$29.00
CE-MTCU Meta Cube	\$29.00
CE-FIBO Fibonacci	\$29.00

### SYMBOLIC - Pages 14-15

CE-EOFH Eye of Horus	\$29.00
CE-FLDLIS Fleur-de-lis	\$29.00
CE-EEAM Evil Eye Amulet	\$29.00
CE-SHOU Shou	\$29.00
CE-OMOM Om	\$29.00

### CELTIC - Pages 16-17

CE-TRIQ Triquetra	\$29.00
CE-CTCS Celtic Cross	\$29.00
CE-CTKN Celtic Knotwork Cross	\$29.00
CE-CTSH Celtic Shield	\$29.00
CE-CTSHM Celtic Shield - Malachite	\$34.00
CE-CTHRT Celtic Hearts	\$29.00

### CELESTIAL - Pages 18-19

CE-DSTR Double Star	\$29.00
CE-PSTAR Petite Stars	\$29.00
CE-STARD Stardust Lightning	\$29.00
CE-THNDR Thunderbolt of Lightning	\$29.00
CE-OPSTR Open Stars	\$29.00

### STEAMPUNK - Pages 20-21

CE-CCOG Classic Cogs	\$29.00
CE-SPSTR Steampunk Stars	\$29.00
CE-SPLOV Steampunk Lovelace	\$29.00
CE-SPDLX Steampunk Deluxe	\$29.00

### GEOMETRIC/ABSTRACT - Pages 22-24

CE-SPAGH Spaghetti	\$29.00
CE-DDROP Diamond Drops	\$29.00
CE-GEOCB Geo Cube	\$29.00
CE-SQSP Square Spiral	\$29.00
CE-DIASP Diamond Spiral	\$29.00
CE-RDSP1 Round Spiral #1	\$29.00
CE-RDSP2 Round Spiral #2	\$29.00
CE-ADDIA Art Deco Diamonds	\$29.00
CE-GEOFA Geo Face	\$29.00
CE-WAVE Wave	\$29.00
CE-CUELE Cu Element	\$29.00
CE-BHOP Boho Hoops	\$29.00

LAZZERED

NEW DESIGNS ARE  
ADDED EVERY FRIDAY

VISIT  
[WWW.LAZZERED.COM](http://WWW.LAZZERED.COM)  
TO SEE WHAT'S NEW

# RETAIL PRICE LIST

All products are  
**Made in the USA** of 100%  
 domestically sourced copper.

## NECKLACES Pages 25 - 30

CN-CTCS	Celtic Cross	\$19.99
CN-CTHT	Celtic Hearts	\$19.99
CN-TRIQ	Triquetra	\$19.99
CN-CTSH	Celtic Shield	\$19.99
CN-TRISK	Triskelion	\$19.99
CN-MTCU	Meta Cube	\$19.99
CN-SHOU	Shou	\$19.99
CN-EOFH	Eye of Horus	\$19.99
CN-VCEQ	Vector Equilibrium	\$19.99
CN-EEAM	Evil Eye Amulet	\$19.99
CN-OMOM	Om	\$19.99
CN-SOFL	Seed of Life	\$19.99
CN-BEAR	Bear Fetish	\$19.99
CN-KOKO	Kokopelli	\$19.99
CN-PTCS	Potted Cactus Hoops	\$19.99
CN-MRYJ	Mary Jane	\$19.99
CN-GEOFA	Geo Face	\$19.99
CN-SPLOV	Steampunk Lovelace	\$19.99
CN-SIMCS	Simple Cross	\$19.99
CN-SBOPN	Benedict Open Cross	\$19.99
CN-TAUCS	Tau Cross	\$19.99
CN-FLCS	Fleury Cross	\$19.99
CN-HTCS	Heart Cross	\$19.99
CN-4HCS	Four Heart Cross	\$19.99
CN-SGCS	Stained Glass Cross	\$19.99
CN-FLDLIS	Fleur-de-lis	\$19.99
CN-CTKNT	Celtic Knotwork Cross	\$19.99
CN-STARD	Stardust Lightning	\$19.99
CN-DSTAR	Double Star	\$19.99
CN-OPSTR	Open Stars	\$19.99
CN-PSTAR	Petite Stars	\$19.99
CN-DFLY	Dragonfly	\$19.99
CN-BFLY	Butterfly	\$19.99

## ORNAMENTS Page 31

CO-SGCAC	Saguaro Cactus	\$20.00
CO-PPCAC	Prickly Pear Cactus	\$20.00
CO-BRCAC	Barrel Cactus	\$20.00
CO-AGCAC	Agave Cactus	\$20.00
CO-CAC4P	Cactus 4-Pack (\$15 savings)	\$65.00
CO-ST48	State 48	\$20.00

## NIGHTLIGHTS Page 32

CNL-SGCA	Saguaro Cactus	\$49.00
CNL-PPCA	Prickly Pear Cactus	\$49.00
CNL-BRCA	Barrel Cactus	\$49.00
CNL-AGCA	Agave Cactus	\$49.00

## BOOKMARKS Page 33

CB-ACGTR	Acoustic Guitar	\$15.00
CB-ELGTR	Electric Guitar	\$15.00
CB-CTHT	Celtic Hearts	\$12.00
CB-OCTO	Octopus Tentacle	\$15.00
CB-ALICE	Alice	\$15.00
CB-CONT	To Be Continued	\$10.00
CB-OCNS	Oceans 2-Pack	\$12.00
CB-CATS	Cats 2-Pack	\$12.00
CB-CTHT	Celtic Hearts	\$10.00

## PICTURE FRAMES Page 34

CF-KOSM	Kokopelli - small	\$39.00
CF-KOLG	Kokopelli - large	\$49.00
CF-CASM	Cactus - small	\$39.00
CF-CALG	Cactus - large	\$49.00
CF-COSM	Coyote - small	\$39.00
CF-COLG	Coyote - large	\$49.00



CLASSIC COGS PG. 20



SW GEOMETRIC PG. 3



DIAMOND DROPS PG. 22

RETAILERS: Please contact us for wholesale pricing.

[info@lazzered.com](mailto:info@lazzered.com) • 602.625.6596

CUSTOM  
 PRODUCTS  
 MAKE A BIG  
 IMPRESSION



LAZZERED  
 offers custom design  
 & manufacturing based  
 on your desires.

Quantities start  
 as low as 50.

MADE IN THE USA

Use our services to create an exclusive piece tailored  
 to your store or business.

CONTACT US FOR A QUOTE: 602.625.6596



OCTOPUS TENTACLE  
 BOOKMARK PG. 33

lazzered

2021-2022  
 COLLECTION

[WWW.LAZZERED.COM](http://WWW.LAZZERED.COM)