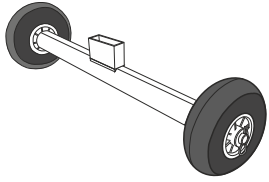


# GOAL POST TRANSPORTER

## Freestanding Elliptical Aluminium Goalposts

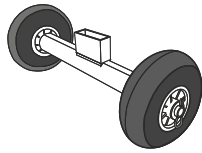
### 735mm Width

Ideal for larger Adult & Youth size goals



### 470mm Width

Ideal for smaller mini soccer goals.

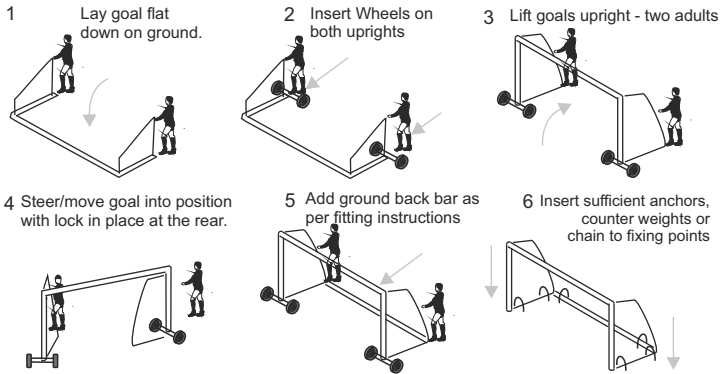


### How to use the Goal Post Transporters - The only steerable system - Exclusive to ITSA Goal

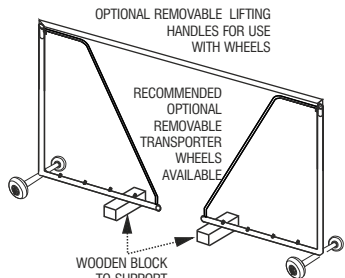
To add the wheel transporters to the base of your goals it is recommended to carefully, with at least two adults lay the goals flat on the floor. Hold the ground side frame vertical and slide the wheel transporter inside the bottom of the upright. Once both wheel transporters are connected carefully lift the goals up so the uprights are vertical. It is important to be very careful that the crossbar does not come away from the side frames when the goals are being moved. Always assemble on flat level ground. Make sure children are not in the vicinity when moving and anchoring goalposts. The side frames can rotate whilst the crossbar is not locked. This allows the goals to be moved in all directions, ideal when you have to store goals in awkward storage areas. However extra care must be taken whilst the crossbar is not locked to the side frames to prevent the crossbar coming apart from the side frames and falling. We recommend When the goal posts are in position for play the barrel locks must be inserted to lock the goals as shown on the goalpost fitting instructions. Likewise when the goals are in storage the goals should have the locks in place for extra stability and to prevent the side frames swinging inward. It is also advised when the goals are in storage to make sure the goals are stored to prevent toppling and secured against a wall and not left freestanding. Always take great care with heavy freestanding football goals.

### Set includes

Two aluminium weather proof 'T' frames, Four Puncture proof Pneumatic Wheels  
Set of two are required to move one goal. The wheels can be used on any number of 120mmx100mm elliptical aluminium goal posts



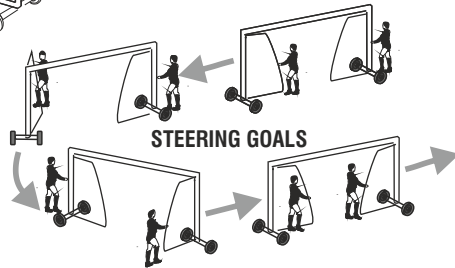
The goal side frames fold neatly under the crossbar and lock away after use with Barrel Lock.



When leaving goals with nets attached and the wheels in place under the upright, lifting the goal from the ground ready for immediate use then the end of the side support, when folded under the crossbar needs support. A block of wood (not included) to the same height from the ground as to the underside of the upright will support the side frame and not put too much undue strain on the goal corners. If the goals are to be transported any distance especially if it is undulating land then it is advised to fit the rear ground frame after the sides have been swung out and locked in place before moving the goal. This will hold the frame together better and put less strain on the joints.

Only steer goals over short distances, add back frames when moving goals long distances on undulating ground

SIDE FRAMES CAN BE FOLDED INWARDS AND LOCKED IN POSITION FOR COMPACT STORAGE. ENSURE THE GOAL IS SAFELY SECURED WHEN NOT IN USE. IDEALLY LAID ON THE GROUND.



## ⚠ WARNING



Total height B from ground level  
Full size goals - 271cm, Youth goals - 240cm  
Mini soccer goals - 210cm

**NEVER** stand or apply any weight on the side frame marked 'A' as this can damage your equipment.

**NEVER** leave the goals unattended with the wheel transporters still attached as shown to the left. Always move the goals into the position required and then anchor the goals to the playing surface using ground anchors or weights as recommended on the fitting instructions supplied with your goalposts. Never move the goals in extreme weather and gales. **DO NOT** remove anchors using goal frame, use the back of the ground peg.

### Removable Handles - Optional

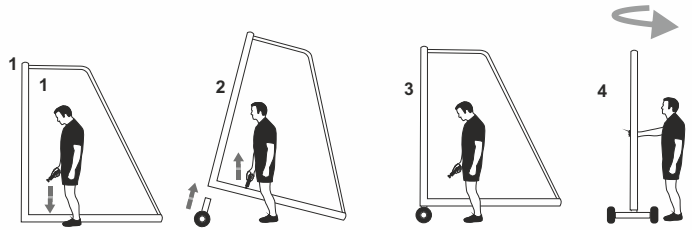
Fits aluminium recessed channels

Removable handles make lifting the goalposts easy when fitting the separate goalpost transporters. 1. insert handle, 2. lift goal frame with two people one person at each end and insert the goalpost transporters 3. lower the goal down onto the goal transporters 4. Swivel the goal side frames 90 degrees and then you can easily move your goals onto the football pitch.



### MOVING THE ITSA GOAL ALUMINIUM FOLDING GOALS with removable Handles

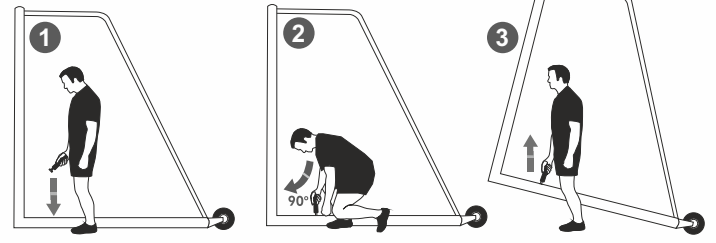
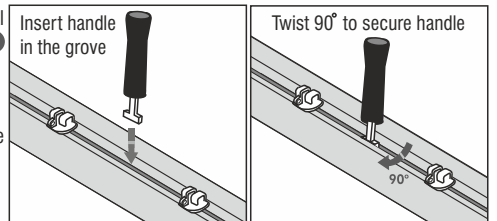
Transporters recommended when moving folding goals



### MOVING THE ITSA GOAL ALUMINIUM ROLLER GOALS with removable Handles

Transporters not required on this design of goal

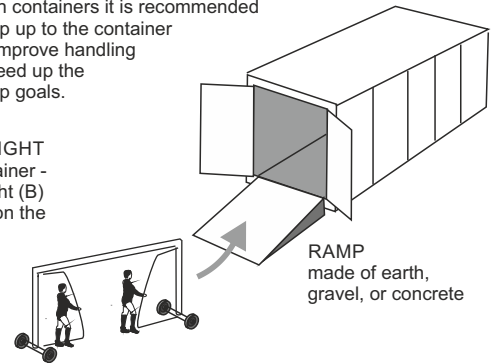
When re-positioning your goal insert 'Removable Handles' 1 into the channel on the side ground frame, 2 turn 90 degrees to fit handle and then lift the goal using the located handle 3. One adult on each upright post is required to raise the upright



### CONTAINER STORAGE

If goals are stored in containers it is recommended to build a small ramp up to the container entrance. This will improve handling of the goals and speed up the time taken setting up goals.

CHECK HEIGHT of your container - see the height (B) of the goal on the transporter photograph (btm left)



Visit our YouTube site for assembly videos : [www.youtube.com/user/Footballgoalposts](http://www.youtube.com/user/Footballgoalposts)

### European & USA Patent GB 2423260

WORLDWIDE © COPYRIGHT 2001 ITSA GOAL POSTS LTD, ALL RIGHTS RESERVED A REGISTERED DESIGN

WE RESERVE THE RIGHTS TO AMEND THE SPECIFICATIONS OF OUR SOCCER PRODUCTS IN THE INTEREST OF CONTINUED DEVELOPMENT. YOUR PRODUCT THEREFORE MAY DIFFER LIGHTLY TO THOSE ILLUSTRATED. E.&OE

The football goal and goalpost transporters are registered designs. 5000197 5000198 5000199.

