





COMPONENTS

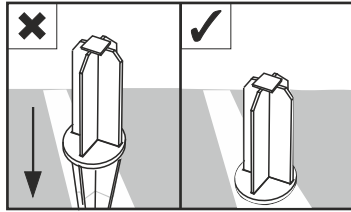
PER POST

A	FRONT GROUND ANCHOR	x1	
E	RESPECT BARRIER POST	x1	
D	ARROW HEAD NET FIXING with attached LOCKING PIN	x2	
F	POST CAP	x1	

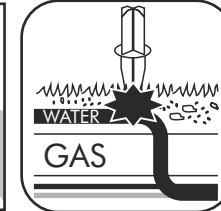
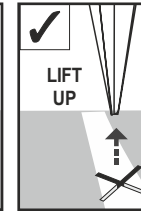
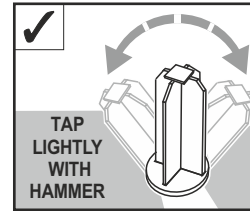
RESPECT BARRIER - CHAIN LINK WITH METAL ANCHOR

SPARE PARTS TEL: 0114 242 4244

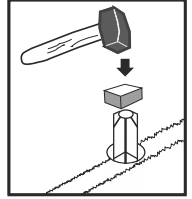
❗ STEEL GROUND ANCHORS HAMMER FULL DOWN INTO THE GROUND



1. Make sure the Steel Ground Anchor is in line square with the posts and hammer fully into the ground.
2. To remove from ground tap lightly and wiggle left to right and lift up. This should leave the ground undisturbed.



NOTE Always use a protective wood block when hammering with a metal mallet to protect the shape of the ground anchor



Note : If the ground is hard it is advisable to wet the ground and make a starting hole with a metal pole before hammering the ground anchor into the ground. Damage cause in this way will invalidate your warranty.

WARNING: CHECK THE POSITION OF ANY UNDERGROUND SERVICES BEFORE USING THE GROUND SPIKES AND PEGS. WE TAKE NO RESPONSIBILITY FOR ANY DAMAGE OR INJURY CAUSED IN THIS MANNER. OUR GROUND ANCHOR SYSTEM IS DESIGNED TO GIVE SLIGHTLY UNDER HEAVY IMPACT TO HELP PREVENT SERIOUS INJURY. TO LOOSEN TAP SIDES OF SPIKE WITH HAMMER BEFORE EXTRACTING. YOU MAY NEED TO INSTALL GROUND SOCKETS FILLED WITH SAND IF USED IN THE SAME POSITION REGULARLY.

OPTIONAL EXTRA

CHN CHAIN LINK 25 Metres 

