



*****REMINDERS TO SAVE YOU MONEY***:**

- **All equipment, tools, machinery, and attachments must be cleaned and re-fueled prior to return or shall be subject to a minimum \$250 cleaning fee per item, fuel at a rate of \$10/gal, and DEF at a rate of \$12/gal.**
- **NO SMOKING in machines** – any evidence of such will result in a \$500 smoking fee IN ADDITION TO the above \$250 cleaning fee if the machine (including tracks, wheels, glass, paint, cab, etc.) itself is dirty, muddy, greasy, dusty, has garbage left behind, or is in any way unclean.
- **OVERUSAGE:** 1 Day Rental = 7am-5pm, no more than 10 machine hours; 1 week rental = 7am on the day out through 5pm on the 7th day, no more than 50 machine hours; 1 month rental = 7am on the day out through 5pm on the 28th day, no more than 250 machine hours; *any hours over these limits will be charged at a rate of \$100 per machine hour, rounded up to the nearest whole hour.*
- **NO SUBLEASING** – All equipment rented is intended solely to be rented and operated only by the customer listed; any attempt to sublease any machinery or equipment will be deferred to our attorney for breach of contract. Criminal charges may apply.
- **Machinery and Equipment is NOT TO BE MOVED TO ANY OTHER LOCATION aside from the premises address agreed upon unless approved, in writing, by KB Equipment Rental, LLC.** Per your contract, steep fines apply for doing so and criminal charges may apply.
- ***Please allow machine to warm up for 10 minutes prior to use if the outside temp is below 50 degrees F.**
- ***PLEASE TURN THROTTLE DOWN AND LOWER BUCKET/BOOM ONTO THE GROUND BEFORE TURNING OFF THE MACHINE TO KEEP WEIGHT OFF OF THE HYDRAULICS WHEN NOT IN USE.**
- *Please follow manufacturer's instructions for safe operation and intended use. Please always use proper protective equipment when operating any equipment. Customer assumes all liability associated with the use or operation of the above items and holds harmless KB Equipment Rental, LLC (dba KB Equipment Rental), its owners, members, employees, mechanics, affiliates, suppliers, contractors, subcontractors, partners, and associates.*

THANK YOU FOR SUPPORTING LOCAL. A PORTION OF OUR PROCEEDS BENEFIT LOCAL VETERANS AND FIRST RESPONDERS.

PLEASE leave us a review on Facebook or Google if you feel we've done a great job! This helps small businesses such as ours get seen and stay seen. It would mean the world to us (Pretty Please)!

We truly aim to please, but we recognize things may not always be perfect. If you are in ANY WAY unsatisfied, please reach out to us so we can make it right BEFORE resorting to leaving a poor review. This kills small businesses unfairly. We can't help you if we aren't aware and we promise we care, so please let us know. We have been thankful to be supported by such an incredible community. We sincerely appreciate you.

*This document is provided solely as a quick reference guide for informational purposes. Any user of this document must independently verify its suitability and applicability to account for the user's specific workplace environment, practices, and legal requirements. Please refer to the Operator's Manual for how to operate the equipment. The user assumes all risks and liabilities with respect to the use of this document.

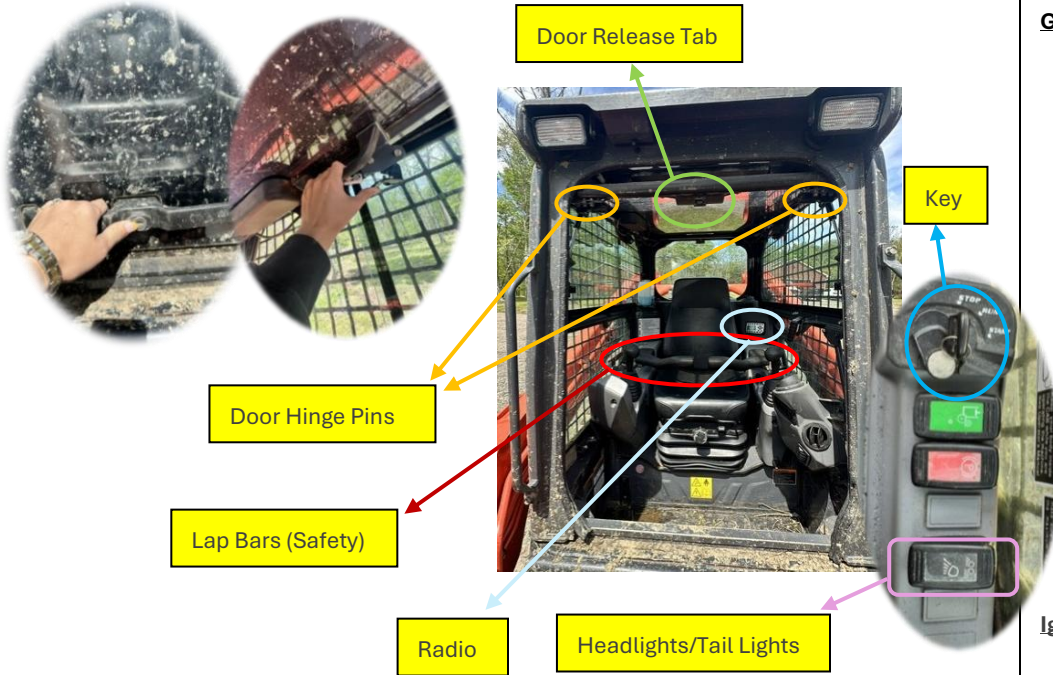
**** BREAKDOWNS**:**

Please both **TEXT** and **CALL** our main line, 724-698-2700 as well as **TEXT** and **CALL** our maintenance tech, Brandan Reesman of MBR Repair, at 724-525-0498. Leave a voicemail if you get the voicemail greeting.



A "HOW TO" video is under the "HOW TO" tab on our website, www.rentKB.com, to show you how to operate the machine.

*****QUICK START GUIDE: KUBOTA SVL-97 & Forestry Mulcher***:**



Getting Started:

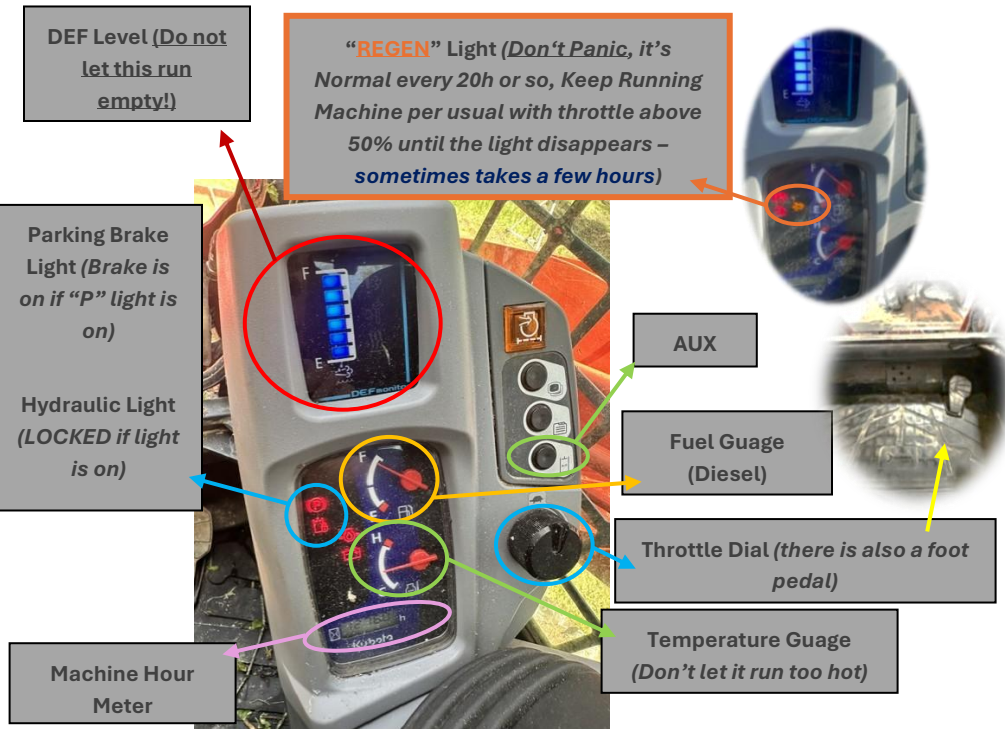
1. Push door latch on exterior to open door (it's tough at times)
2. Once inside the machine, you can reach above you to find thumb tabs on the handles (shown in photo) which will release the door so you may pull it down to closer the cab
3. If you wish to leave the door open, you may lock the door into the open position using the two door hinge pins (so it stays open and doesn't fall)
4. When you eventually exit the machine, release the door hinge pins first if locked, then you can pull the door release tab to free up the door and pull down to close

Ignition & Headlights:

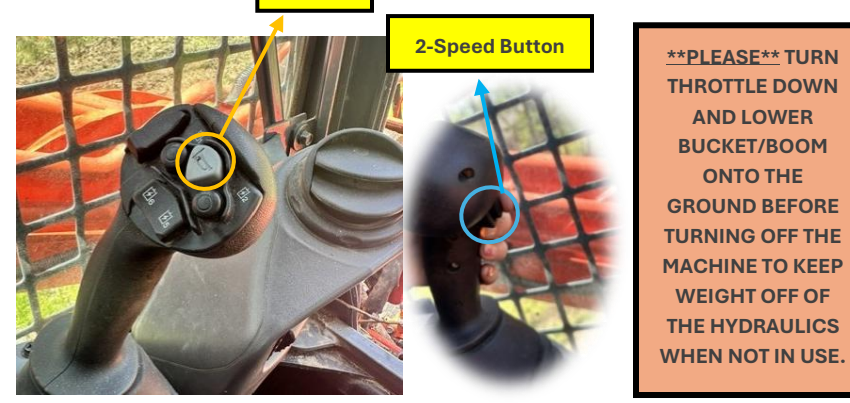
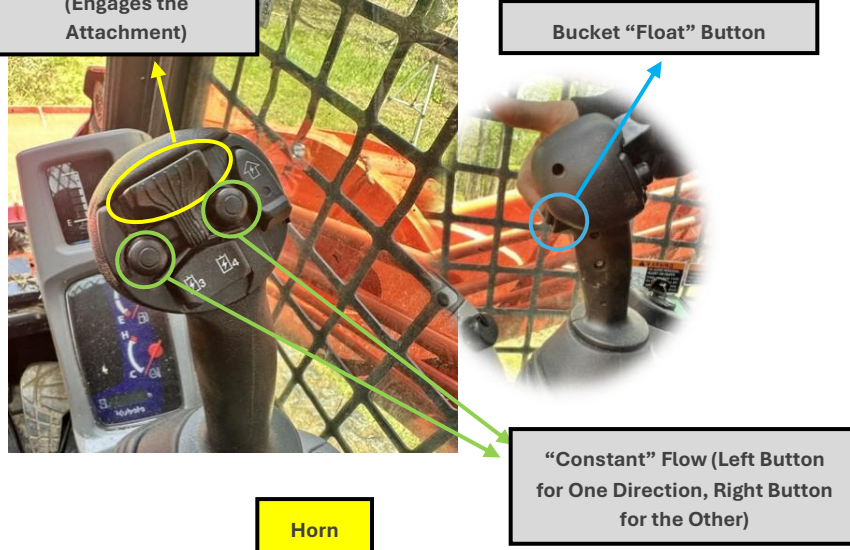
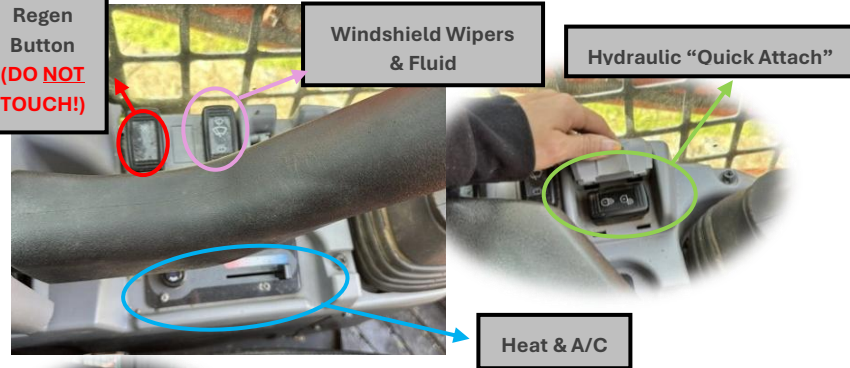
1. On your right, turn the key fully to turn on the machine)
2. Push the green button below that to "unlock" the hydraulics; if you need to ever put the machine in park while sitting idle to prevent rolling away, use the red button just below that (same button will release the parking brake if you ever need to release it to move)
3. Headlights and tail lights are also located on this panel

AUX:

1. (Only after hooking hydraulic hoses up) Push the AUX button until you see the flashing green AUX button appear on screen – this tells the machine you have an attachment requiring auxiliary hydraulics **(items that have hoses connected to machine)**
2. For high-powered items such as mulching heads, augers, and post pounders, run around 75% throttle, **NOT** 100%!



*This document is provided solely as a quick reference guide for informational purposes. Any user of this document must independently verify its suitability and applicability to account for the user's specific workplace environment, practices, and legal requirements. Please refer to the Operator's Manual for how to operate the equipment. The user assumes all risks and liabilities with respect to the use of this document.



****PLEASE** TURN THROTTLE DOWN AND LOWER BUCKET/BOOM ONTO THE GROUND BEFORE TURNING OFF THE MACHINE TO KEEP WEIGHT OFF OF THE HYDRAULICS WHEN NOT IN USE.**

Hydraulic Quick Attach:

5. De-taching from items: Lower item completely onto ground. Once in position, hold down "unlock" to unlock from machine, then back away to release yourself from bucket/attachment
6. Attaching items: Once in position, hold down "lock"

Connecting Hoses:

1. Shown to left is the hose configuration for the forestry mulcher attachment, but most attachments have a similar configuration (most only use the bottom 2 – if there is pressure in the lines, you will have a tough time pushing the hoses on – there's no certain trick, just have to use some muscle)

****HYDRAULIC FLUID LEVEL (SUPER IMPORTANT!):**

1. Check this bubble every few hours (down by foot pedal) to ensure you see hydraulic fluid halfway up it or higher (above red line) – **DO NOT** run machine if hydraulic fluid is low or missing. Call us immediately.

Forestry Mulcher:

1. You **MUST** grease the 3 grease joints on mulcher every 3 hours – the bearings will go on this if you don't and you'll be responsible for replacing. Customer to supply grease.

Right Joystick:

1. Moving the **RIGHT** joystick forward or backward raises/lowers the boom; moving it left or right tilts the bucket/attachment inward/outward
2. **Bucket Float:** Move **RIGHT** joystick forward briefly and immediately push the bucket float button (located on backside of joystick) just after to engage the bucket float feature – bucket will "float" for easy grading without you having to re-position boom constantly with the ground
3. **Running attachments:** Once **AUX** is on, tilt the hydraulic flow button left or right to change direction for spinning of any attachments (some attachments only work in one direction); if you want constant flow so you don't have to continuously hold down the button, simply push the circular buttons just below to engage constant flow. Simply push the hydraulic flow button to stop such flow completely. **PLEASE HAVE ATTACHMENT ALREADY SPINNING BEFORE MAKING CONTACT WITH TREES/GROUND/ETC.**

Left Joystick:

1. Moving the **LEFT** joystick to move the entire machine (forward, left, right, or reverse) – backup camera will automatically kick on when reversing
2. Push the 2-Speed Button (located on backside of joystick) to engage faster travel speed, a rabbit symbol will appear on the dash (only for "driving" the machine longer distances, it won't make the boom or other features move any faster). Toggle it off when done.