



*****REMINDERS TO SAVE YOU MONEY***:**

- **All equipment, tools, machinery, and attachments must be cleaned and re-fueled prior to return or shall be subject to a minimum \$250 cleaning fee per item, fuel at a rate of \$10/gal, and DEF at a rate of \$12/gal.**
- **NO SMOKING in machines** – any evidence of such will result in a \$500 smoking fee IN ADDITION TO the above \$250 cleaning fee if the machine (including tracks, wheels, glass, paint, cab, etc.) itself is dirty, muddy, greasy, dusty, has garbage left behind, or is in any way unclean.
- **OVERUSAGE:** 1 Day Rental = 7am-5pm, no more than 10 machine hours; 1 week rental = 7am on the day out through 5pm on the 7th day, no more than 50 machine hours; 1 month rental = 7am on the day out through 5pm on the 28th day, no more than 250 machine hours; *any hours over these limits will be charged at a rate of \$100 per machine hour, rounded up to the nearest whole hour.*
- **NO SUBLEASING** – All equipment rented is intended solely to be rented and operated only by the customer listed; any attempt to sublease any machinery or equipment will be deferred to our attorney for breach of contract. Criminal charges may apply.
- **Machinery and Equipment is NOT TO BE MOVED TO ANY OTHER LOCATION aside from the premises address agreed upon unless approved, in writing, by KB Equipment Rental, LLC.** Per your contract, steep fines apply for doing so and criminal charges may apply.
- ***Please allow machine to warm up for 10 minutes prior to use if the outside temp is below 50 degrees F.**
- ***PLEASE TURN THROTTLE DOWN AND LOWER BUCKET/BOOM ONTO THE GROUND BEFORE TURNING OFF THE MACHINE TO KEEP WEIGHT OFF OF THE HYDRAULICS WHEN NOT IN USE.**
- *Please follow manufacturer's instructions for safe operation and intended use. Please always use proper protective equipment when operating any equipment. Customer assumes all liability associated with the use or operation of the above items and holds harmless KB Equipment Rental, LLC (dba KB Equipment Rental), its owners, members, employees, mechanics, affiliates, suppliers, contractors, subcontractors, partners, and associates.*

THANK YOU FOR SUPPORTING LOCAL. A PORTION OF OUR PROCEEDS BENEFIT LOCAL VETERANS AND FIRST RESPONDERS.

PLEASE leave us a review on Facebook or Google if you feel we've done a great job! This helps small businesses such as ours get seen and stay seen. It would mean the world to us (Pretty Please)!

We truly aim to please, but we recognize things may not always be perfect. If you are in ANY WAY unsatisfied, please reach out to us so we can make it right BEFORE resorting to leaving a poor review. This kills small businesses unfairly. We can't help you if we aren't aware and we promise we care, so please let us know. We have been thankful to be supported by such an incredible community. We sincerely appreciate you.

*This document is provided solely as a quick reference guide for informational purposes. Any user of this document must independently verify its suitability and applicability to account for the user's specific workplace environment, practices, and legal requirements. Please refer to the Operator's Manual for how to operate the equipment. The user assumes all risks and liabilities with respect to the use of this document.

** BREAKDOWNS**

Please both **TEXT** and **CALL** our main line, 724-698-2700 as well as **TEXT** and **CALL** our maintenance tech, Brandan Reesman of MBR Repair, at 724-525-0498. Leave a voicemail if you get the voicemail greeting.



A "HOW TO" video is under the "HOW TO" tab on our website, www.rentKB.com, to show you how to operate the machine.

QUICK START GUIDE: BOBCAT E50 R2-SERIES



Door Latch

Travel Controls



Right Joystick

Blade Control

Constant Flow

Start/Ignition



Left Joystick

SAFETY

Horn

Windshield Wiper

Quick Attach

Starting Machine:

1. Put on seatbelt
2. Ensure THROTTLE (pictured on reverse side of this guide) is turned all the way down.
3. Turn start button to "ON" position (1 click).
4. ****If engine hasn't been recently ran and warmed up, wait for the "Glow Plug" light (pictured on reverse side of this guide) to go out BEFORE you proceed to turn ignition on (2 clicks for ignition)**
5. ****If the outside temperature is below 50 degrees, please allow the engine to run for 10 minutes prior to operating the machine.**
6. Pull down the SAFETY bar on your left (parking brake)

Traveling:

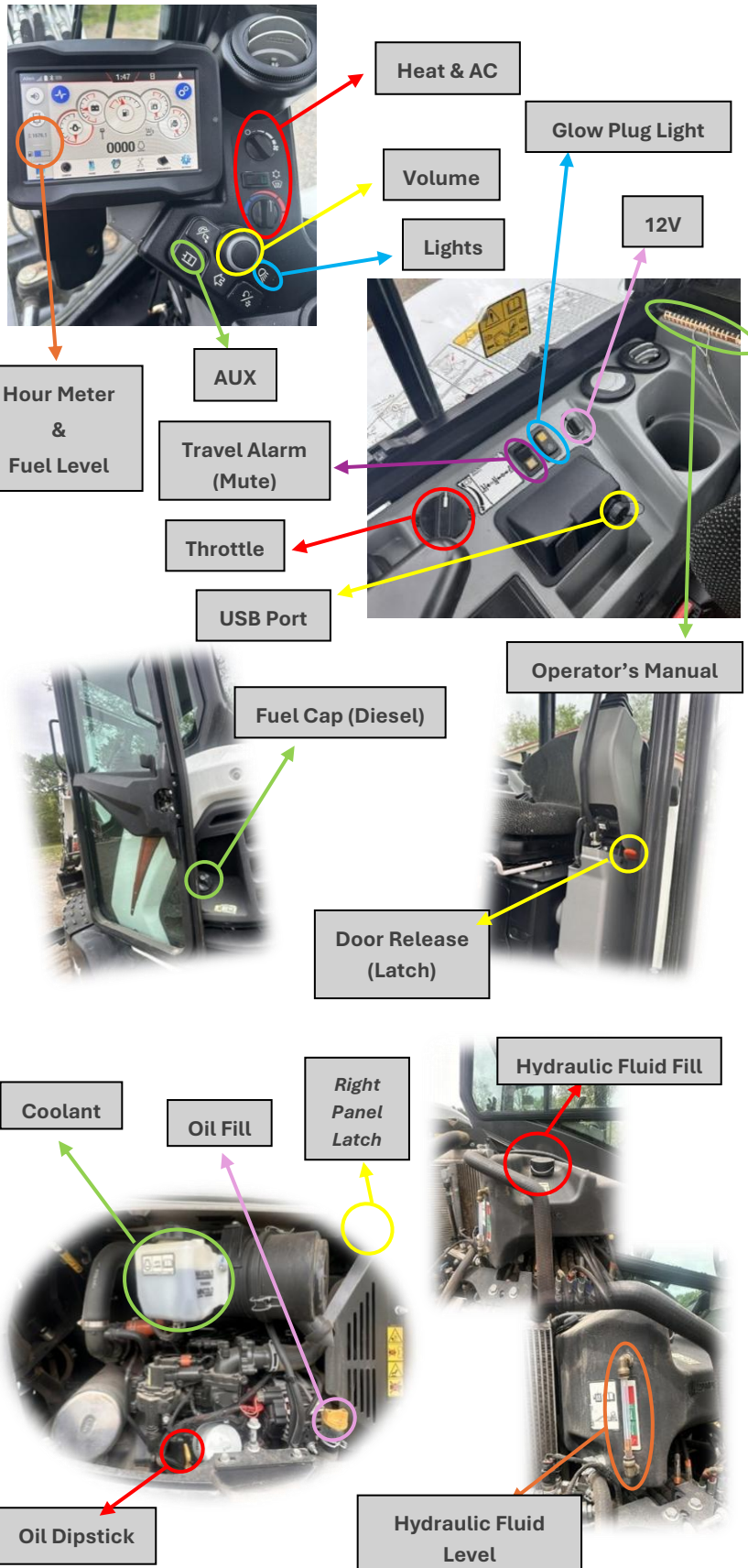
1. Lift the "Blade Control" lever to ensure blade is lifted up off of ground
2. Pull the "Right Joystick" Back to Lift the Boom (Bucket) Up off the Ground
3. You can now travel with the machine ("drive" the machine) by using the TRAVEL CONTROLS – push forward or pull back to go in forward/reverse (the "blade" part of machine is considered the front, so you'll need to mirror/reverse these controls if the blade is behind you).
4. To turn, simply push one travel control forward while pulling the other back and vice-versa (much like a "zero turn" mower)
5. You can also use the foot pedals down below to operate the travel controls
6. Push the orange button on top of the blade control for 'high speed' travel, indicated by the rabbit icon on the screen (and push again to toggle off)

Joystick Controls (Operating Machine):

1. Turn the THROTTLE up to 50%-75% if you need maximum power for lifting heavy items or doing tougher digging (you shouldn't need to run it at 100%)
2. Opposite of the move described above, push the RIGHT JOYSTICK forward to lower boom
3. Tilt RIGHT JOYSTICK left to curl bucket in toward you & right to curl bucket away from you
4. Push LEFT JOYSTICK forward to raise front part of boom up; pull it back to lower this part of the boom.
5. Push LEFT JOYSTICK left to rotate cab counterclockwise or right for clockwise (360 degrees).
6. Use the grey button on top of LEFT JOYSTICK to rotate the boom offset left or right; the button on the underside of the joystick controls the horn.

**This document is provided solely as a quick reference guide for informational purposes. Any user of this document must independently verify its suitability and applicability to account for the user's specific workplace environment, practices, and legal requirements. Please refer to the Operator's Manual for how to operate the equipment. The user assumes all risks and liabilities with respect to the use of this document.*

****QUICK START GUIDE: BOBCAT E50 R2-SERIES**:**



Controlling the Hydraulic Thumb (or other attachment):

1. Push the "AUX" button just below the display screen to tell the machine you have an auxiliary item such as a hydraulic thumb or auger attachment, etc. requiring AUX (the AUX icon will appear at the top right of the display)
2. Use the grey button on the top of the RIGHT JOYSTICK to open/close the hydraulic thumb (or engage other attachments)
3. If you have other attachments (such as augers, mulchers, etc), and prefer constant flow as opposed to constantly holding down your thumb, the button on the underside of the RIGHT JOYSTICK will engage constant flow for your AUX hydraulics (auger will run constant).

Heat and AC:

1. Be sure the AC/Defrost button in the center is flipped to the right to be ON (indicated by green light) if you need AC or defrost. Otherwise, leave this button off.

Shutting Down Machine:

1. Ensure THROTTLE is turned completely down.
2. Lower boom/bucket AND blade both onto ground.
3. Turn off machine (turn key all the way to the left).
4. Lift SAFETY bar up. Unbuckle seat belt.
5. Ensure covers are on USB and 12V outlets
6. Push red "door release" latch to release door and close.

Check Before and After Each Use:

1. Open the rear hatch by pushing straight into the center button on rear panel.
2. Check coolant level (do not operate machine if level is low).
3. Check oil dipstick (do not operate machine if level is low).
4. Located to your top-right **(just out of photo boundaries on the photo to the left)**, there is a secondary latch that opens up the panel on the right side of machine.
5. ****Once right panel is open, check the hydraulic fluid level (EXTREMELY IMPORTANT)! This absolutely needs checked every few hours. Ensure the fluid is in the green area, not too full, not too low. DO NOT RUN MACHINE IF LOW – NOTIFY US FOR INSTRUCTIONS ON WHAT TO DO NEXT. It is intentionally shown low in this photo – DO NOT RUN IF LOW. (Also notify us if you see it at a lower level than you previously saw it as that indicates a hydraulic fluid leak somewhere).**

Prior to Returning Machine:

1. Please ensure to clean any trash, dust, and mud out of cab.
2. Please clean bucket, blade, tracks, **and** up inside tracks.
3. Please re-fuel (diesel OR off-road diesel are both fine).