



*****REMINDERS TO SAVE YOU MONEY***:**

- **All equipment, tools, machinery, and attachments must be cleaned and re-fueled prior to return or shall be subject to a minimum \$250 cleaning fee per item, fuel at a rate of \$10/gal, and DEF at a rate of \$12/gal.**
- **NO SMOKING in machines** – any evidence of such will result in a \$500 smoking fee IN ADDITION TO the above \$250 cleaning fee if the machine (including tracks, wheels, glass, paint, cab, etc.) itself is dirty, muddy, greasy, dusty, has garbage left behind, or is in any way unclean.
- **OVERUSAGE:** 1 Day Rental = 7am-5pm, no more than 10 machine hours; 1 week rental = 7am on the day out through 5pm on the 7th day, no more than 50 machine hours; 1 month rental = 7am on the day out through 5pm on the 28th day, no more than 250 machine hours; any hours over these limits will be charged at a rate of \$100 per machine hour, rounded up to the nearest whole hour.
- **NO SUBLEASING** – All equipment rented is intended solely to be rented and operated only by the customer listed; any attempt to sublease any machinery or equipment will be deferred to our attorney for breach of contract. Criminal charges may apply.
- **Machinery and Equipment is NOT TO BE MOVED TO ANY OTHER LOCATION aside from the premises address agreed upon unless approved, in writing, by KB Equipment Rental, LLC.** Per your contract, steep fines apply for doing so and criminal charges may apply.
- ***Please allow machine to warm up for 10 minutes prior to use if the outside temp is below 50 degrees F.**
- ***PLEASE TURN THROTTLE DOWN AND LOWER BUCKET/BOOM ONTO THE GROUND BEFORE TURNING OFF THE MACHINE TO KEEP WEIGHT OFF OF THE HYDRAULICS WHEN NOT IN USE.**
- *Please follow manufacturer's instructions for safe operation and intended use. Please always use proper protective equipment when operating any equipment. Customer assumes all liability associated with the use or operation of the above items and holds harmless KB Equipment Rental, LLC (dba KB Equipment Rental), its owners, members, employees, mechanics, affiliates, suppliers, contractors, subcontractors, partners, and associates.*

THANK YOU FOR SUPPORTING LOCAL. A PORTION OF OUR PROCEEDS BENEFIT LOCAL VETERANS AND FIRST RESPONDERS.

PLEASE leave us a review on Facebook or Google if you feel we've done a great job! This helps small businesses such as ours get seen and stay seen. It would mean the world to us (Pretty Please)!

We truly aim to please, but we recognize things may not always be perfect. If you are in ANY WAY unsatisfied, please reach out to us so we can make it right BEFORE resorting to leaving a poor review. This kills small businesses unfairly. We can't help you if we aren't aware and we promise we care, so please let us know. We have been thankful to be supported by such an incredible community. We sincerely appreciate you.

**** BREAKDOWNS**:**

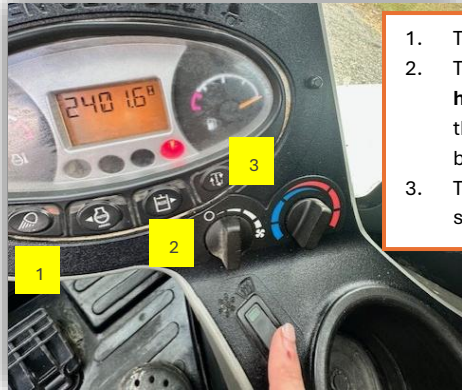
Please both **TEXT and CALL** our main line, **724-698-2700** as well as **TEXT and CALL** our maintenance tech, Brandan Reesman of MBR Repair, at **724-525-0498**. Leave a voicemail if you get the voicemail greeting.

A "HOW TO" video is under the "HOW TO" tab on our website, www.rentKB.com, to show you how to operate the machine.

**This document is provided solely as a quick reference guide for informational purposes. Any user of this document must independently verify its suitability and applicability to account for the user's specific workplace environment, practices, and legal requirements. Please refer to the Operator's Manual for how to operate the equipment. The user assumes all risks and liabilities with respect to the use of this document.*

QUICK START GUIDE: BOBCAT E45:

1. Close the Door (optional) – **PLEASE BE SURE TO PUSH THIS RED LEVER TO RELEASE THE DOOR SO YOU MAY SHUT IT** (DON'T JUST PULL ON THE DOOR, THIS RED LEVER NEEDS PUSHED TO RELEASE IT FIRST)
2. Put Seatbelt On
3. Start the Machine by Turning the Key to the Right and let engine warm up for a few mins (longer if cold out)
4. Adjust heat and AC (be sure this small button – with my finger on it - is flipped upward for AC)



1. Toggle the lights on and off
2. Toggle the "AUX" button to engage **hydraulic thumb** – THEN, the thumb is controlled by the grey button on the right joystick
3. Toggle the "i" information button to see the machine hours on the screen



THROTTLE (SPEED)
KEY (START)

5. Open the Cab Up if You Wish by Pushing these two buttons on the front glass and pulling the entire window inward toward yourself, then up, until it clicks into place (reverse this order to close the window)



RED SAFETY LEVER

LEFT JOYSTICK
WINDSHIELD WIPER BUTTON



6. Flip the **Red Safety Lever** on Your Left to the "Down" Position to Engage the Machine
 - o Move the Entire Machine Forward or Backward or Turn with the Two Sticks in Front of You on the Floor *(also can be controlled with the foot pedals, which do flip out if you wish to use them)*
 - o Move the Cab 360 Degrees by Pushing **Left Joystick** to the Left or Right
 - o Raise/Lower Bucket by Driving **Left Joystick** Forward/Back
 - o Raise/Lower Boom by Driving **Right Joystick** Forward/Back
 - o Curl the Bucket Inward/Outward by Pushing **Right Joystick** Left/Right
7. Lift the blade up and down with the blade control (a good practice is to leave it down when in stationary position for added support)



BLADE CONTROL

RIGHT JOYSTICK

PLEASE TURN THROTTLE DOWN AND LOWER BUCKET/BOOM ONTO THE GROUND BEFORE TURNING OFF THE MACHINE TO KEEP WEIGHT OFF OF THE HYDRAULICS WHEN NOT IN USE.