
IowaGrants.gov

Menu | Help | Log Out
Back | Print | Add | Delete | Edit | Save

Grant/Project Tracking

Status Report: ECI-15-015 - 02

Grant: ECI-15-015-Empowerment for the Kids - SFY15

Status: Editing

Program Area: Early Childhood Iowa

Grantee Organization: Empowerment For The Kids

Program Manager: Tami Foley

Board and Contact Information Mark as Complete | Go to Status Report Forms

Area and Counties Served

Name of Early Childhood Area: Cerro Gordo, Hancock, Worth Empowerment

Website: www.empowermentforthekids.org

Counties in ECIA: Cerro Gordo, Hancock, Worth

Current Board Chairperson

Current Board Chairperson Name: Barbra Olson

Board Chairperson Address: 1901 1st Ave. N.

Board Chairperson City: Clear Lake

Board Chairperson State: Iowa

Board Chairperson Zipcode: 50428

Board Chairperson Phone: 641-357-1067

Board Chairperson E-mail: beolson@netins.net

Current Fiscal Agent

Current Fiscal Agent Name: Cerro Gordo County

Fiscal Agent Address: 22 N. Washington Ave.

Fiscal Agent City: Mason City

Fiscal Agent State: Iowa

Fiscal Agent Zipcode: 50401

Fiscal Agent E-mail: hmathre@co.cerro-gordo.ia.us

Contact Person for the Local ECI Board

Contact Person Name: Cody Williams

Contact Address: 103 East State Street STE 608

Contact City: Mason City


Contact State: Iowa

Contact Zipcode: 50401


Contact Phone: 641-422-2707

Contact E-mail: eac@empowermentforthekids.org


Click here to download the Assurances and Signature Page.

Assurances and Signature Page Attachment* 

Click here to download the Board Matrix template.

Board Matrix Attachment* Board_Membership_Matrix_SFY15.pdf 

Click here to download the Community Plan Updates template.

Community Plan Updates* Community_Plan_Updates_SFY15.pdf 

Click here to download the Executive Summary template.

Early Childhood Iowa Local Area
Annual Report
State Fiscal Year 2015
July 1, 2014 through June 30, 2015

Name of Early Childhood Area: Cerro Gordo, Hancock, Worth Empowerment

Assurances:

I hereby affirm and certify that:

1. The information in this annual report is accurate, to the best of my knowledge.
2. The Board reviewed all indicator data, trends and analysis during this fiscal year.
3. The local ECI Board has conducted an annual review of the ECI Area Director contract.
4. The Community Plan was reviewed by the ECI Area Board during this fiscal year.
5. This Annual Report was approved by ECI Area Board prior to submittal.

For items 2-5 above, an ECIA board must be able to provide proof through supportive documentation upon request.

Signature of ECI Board Chairperson

Date

Barbra Olson

ECI Chairperson's Name (print or type)



Community Plan Updates in SFY'2015

Name of Early Childhood Area: Cerro Gordo, Hancock, Worth Empowerment

Iowa Code chapter 256I requires that local ECIA boards report progress toward and achievement of desired results identified in the Community Plan.

Provide a narrative of the ECIA's progress in the last year towards the priorities and strategies identified in the most recent Community Plan. Success and/or challenges to meeting the ECIA goals may also be included.

The board created a new community plan in November of 2014. The plan is to go in effect July 1st 2015. The past community plan was reviewed and some areas were changed and improved on. The data was reviewed and determined that a few of the indicators data was unreliable and changed, so a few were removed. Other indicators still indicate room for improvement to the goals of the area board.

The goals were created to ensure that services empowering families through education, parent support and the use of community networks.

2015 Area Priorities the area Board has set:

- *Empower parents through parent support and education programs.*
- *Improve the quality of child care and preschool for all families with young children.*
- *Enrich the network of community resources to promote a healthy start for all children.*

2015 Empowerment Indicators:

The following indicators have been identified by the CGHW Board and have been updated. The following priorities are supported by the CGHW Board:

- *Childhood Immunizations*
- *Child Preventative Dental Services*
- *Child Abuse 0-5*
- *Childhood Obesity*
- *Quality Child Care/Preschool*

Continued review of the current community plan is ongoing through-out the year. The area has seen progress in the Areas of Immunizations, dental services, quality childcare and obesity issues. The 2015 programs in these areas seen great results and improvements through education and result measures. The board is very pleased with the current progress.



Cerro Gordo, Hancock, Worth Empowerment

Contact: Cody Williams, Empowerment Service Coordinator

103 East State Street, Suite 608 Mason City, IA 50401 Phone: (641) 422-2707

e-mail: eac@empowermentforthekids.org Website: www.empowermentforthekids.org

Mission: Building strategies to improve the lives of children and their families through collaboration, coordination, and planning in Cerro Gordo, Hancock, and Worth Counties.

Vision: Working together so every child is happy, healthy, and ready to learn.

Local Story from Family Connections-Home Visitation Program Serving 0-5 year olds.

We have a mom that is a recovering addict and a mom that just had her 9th baby with a completely sober free pregnancy for the first time ever. She has now been sober and drug free for the last year, and is holding down a full time job. She now has been reunited with her 5 year old daughter and has gained full custody.

This mom has been enrolled with us prenatally and her son is now 4 months old. Since being enrolled with us she now plays an active role in the life of her daughter and newborn son. Her favorite thing to do with her daughter is to work on child development and playing school. For the first time as a mother she is parenting and experiencing her children's development such as remembering the first time they laughed or smiled. Even though this is her 9th child, she feels that she is parenting for the first time because she is doing all of it sober. This mom is doing so well that she is reaching out to other parents to join Family Connections because she feels it has been such a great asset to her and her family! - Cerro Gordo County family

Did you know?

Why are the programs we support important to reaching our vision and mission?

- Programs must be Comprehensive to make the best use of the funds to effect the most children.
- Programs must be Collaborative to achieve success to make all children happy, healthy and ready to learn.
- Programs must achieve our overall mission and vision.

COMMUNITY PLAN PRIORITIES:

1. *Empower parents through parent support and education programs.*
2. *Improve the quality of child care and preschool for all families with young children.*
3. *Enrich the network of community resources to promote a healthy start for all children.*

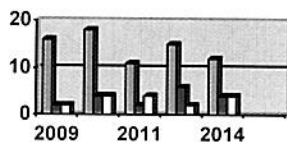
What services/programs/activities do we support?

Family Connections ♦ Parent Education Program ♦ Building Independence ♦ Nurse Consultant ♦ TEACH Healthy Lifestyles ♦ CCR&R Consultation and Training ♦ Preschool Transportation ♦ Preschool Scholarships ♦ Oral Health Project ♦ Calling the Shots

How do we measure our progress?

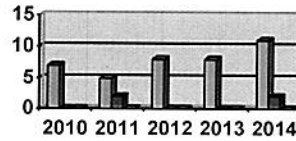
1. Quality Childcare

QRS Involved Home Providers



□ Cerro Gordo ■ Hancock □ Worth

QRS Involved Centers

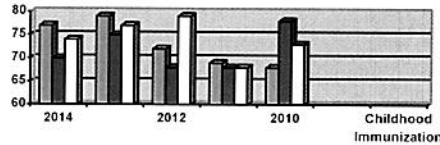


□ Cerro Gordo ■ Hancock □ Worth

How are we doing? In 2011 the number of involved providers decreased dramatically. Rational behind this drop was due to a lack of incentives for the programs being involved. However this past year we have seen a rise in all three counties due to more pushes from incentives and process assistance given. Center numbers have increased in the past year due to local initiative to require for scholarships. .

2. Childhood Immunization

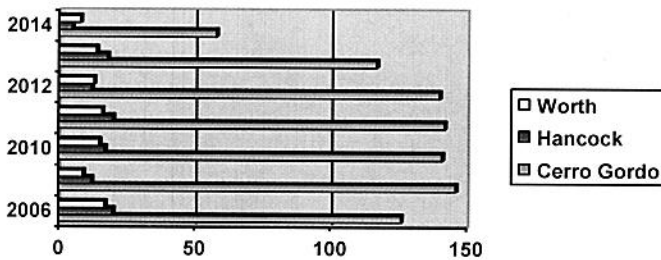
Comprehensive IRIS Data



□ Cerro Gordo ■ Hancock □ Worth

How are we doing? From 2010 to 2014 we saw a large decrease of completed immunizations in all three counties. Since the implementations of the program “Calling the Shots” the program has had success with creating that trend to stop and to move to the goal of 90%. The three county area has significant improvements that are needed, but feels that with the recall program and collaboration with medical homes, that the rate should be at goal in the next few years.

3. Child Abuse 0-5



□ Worth
■ Hancock
□ Cerro Gordo

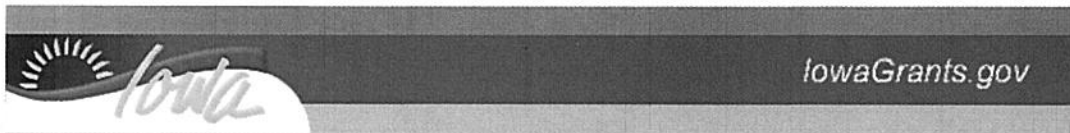
How are we doing? In relation to the state’s confirmed and founded abuse, Cerro Gordo has been high in last several years. Data trend shows in the local area abuse rates are beginning to decrease significantly for the first time in several years. However, poverty rates are increasing in the area. The hope is to see a decrease over time to the overall confirmed and founded abuse.

What can you do to help?

- To help with awareness of the empowerment board.
- Get involved with local initiatives to increase the health, safety and education of young children.
- Give more awareness to legislators about the importance of funds that support programs that the community needs and utilizes.

Others within our community working on similar issues:

- United Way of North Central Iowa
- Local Decategorization Group



Menu | Help | Log Out | Back | Print | Add | Delete | Edit | Save

Grant/Project Tracking

Status Report: ECI-15-015 - 02

Grant: ECI-15-015-Empowerment for the Kids - SFY15
Status: Editing
Program Area: Early Childhood Iowa
Grantee Organization: Empowerment For The Kids
Program Manager: Tami Foley

Instructions

If your board funds two or more dental programs, combine and report the performance measures data together.
 Use the TAB key to move from one field to the next. When entering financial information, include both dollars and cents, example: 95234.22
Note: This is a two-part form; follow instructions carefully!
 To begin entering information into this form, click "Edit" at the top of the form. You can complete all fields except the "Optional: Other Funding Expended and Source" field. Click "Save" at the top of the form. Now, the "Optional: Other Funding Expended and Source" field is available. If applicable, click "Add" to enter the source and funding amount in the fields. Next, click on "Save" at the top of the form. Repeat this process for each "Optional Funding" entry in this section.

Dental - Direct Services

[Go to Status Report Forms](#)

Name of Program or Service Oral Health Project

List the name of each contractor funded.

Contractor North Iowa Community Action Org.

Description The hygienists from NICAIO will provide oral health education, screenings, and fluoride varnish services for children in Cerro Gordo, Worth, and Hancock counties. They will also assist children needing further treatment in receiving it.

Indicate Program Type: Evidence Based

Link to Which Comm. Plan Priority or Priorities Dental

How much was invested (Input measures)

Fiscal investments must coincide with early childhood financial statement

Source	Amount
School Ready-Preschool	\$0.00
School Ready-Quality	\$0.00
School Ready-Other/Undesignated	\$16,310.14
School Ready-Admin	\$0.00
Total	\$16,310.14

Optional: Other Funding Expended and Source

Add

Source Amount

\$0.00

Total Funding

Total \$16,310.14

How much was done or produced (Output measures)

Age of children served (as of September 15)

Output Measures	# done or produced
Prenatal	
Children 0 to 1 Year	
Children 1 to 2 Years	
Children 2 to 3 Years	
Children 3 to 4 Years	26
Children 4 to 5 Years	212
Children 5 to 6 Years	76
Total	314

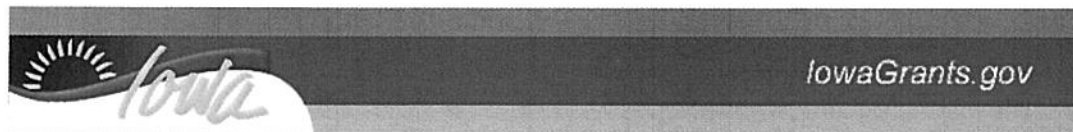
How well did we do it (Quality/Efficiency Measures)

Children Screened for	Dental Decay	314	314	100.0%
	Type of Screening Completed	# Achieved Measure	# Possible	%
Of those Children Screened, % referred on for additional services or treatment	10	314	3.18%	
	# Achieved Measure	# Possible	%	
Cost per Child for the service	\$16,310.14	314	\$51.94	
	Total Cost	# of Children	\$	

What Was the Change in Conditions for Those We Served (Outcome Measures)

% of children who need dental treatment that went to a dentist	9	10	90.0%
	# Achieved Measure	# Possible	%
% of children who are cavity free	313	314	99.68%
	# Achieved measure	# Possible	%

Last Edited By: Cody Williams, 08/25/2015



Menu | Help | Log Out | Back | Print | Add | Delete | Edit | Save

Grant/Project Tracking

Status Report: ECI-15-015 - 02

Grant: ECI-15-015-Empowerment for the Kids - SFY15
Status: Editing
Program Area: Early Childhood Iowa
Grantee Organization: Empowerment For The Kids
Program Manager: Tami Foley

Instructions

If your board funds two or more health prevention programs, combine and report the performance measures data together.
 Use the TAB key to move from one field to the next. When entering financial information, include both dollars and cents, example: 95234.22
Note: This is a two-part form; follow instructions carefully!
 To begin entering information into this form, click "Edit" at the top of the form. You can complete all fields except the "Optional: Other Funding Expended and Source" field. Click "Save" at the top of the form. Now, the "Optional: Other Funding Expended and Source" field is available. If applicable, click "Add" to enter the source and funding amount in the fields. Next, click on "Save" at the top of the form. Repeat this process for each "Optional Funding" entry in this section.

Health Prevention - Direct Service

[Go to Status Report Forms](#)

Name of Program or Service Calling the Shots

List the name of each contractor funded.

Contractor Cerro Gordo Department of Public Health

Description Mail out computer-generated vaccine recall letters for under-immunized children aged 0-36 months that are served by the following clinics: Mason City Pediatric Clinic, Clear Lake Pediatric Clinic, Regency Family Practice, Residency Program, and Clear Lake Family Health

Indicate Program Type: Evidence Based

Link to Which Comm. Plan Priority or Priorities Immunization

How much was invested (Input measures)

Fiscal investments must coincide with early childhood financial statement

Source	Amount
School Ready-Preschool	\$0.00
School Ready-Quality	\$5,544.78
School Ready-Other/Undesignated	\$12,847.42
School Ready-Admin	\$0.00
Total	\$18,392.20

Optional: Other Funding Expended and Source

Add

Source	Amount	Add
		\$0.00

Total Funding

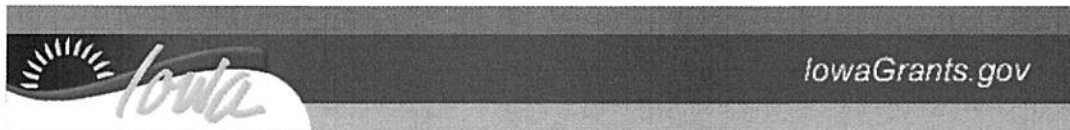
Total \$18,392.20

How much was done or produced (Output measures)

Age of children served (as of September 15)

Output Measures	
Prenatal	0
Children 0 to 1 Year	1435
Children 1 to 2 Years	2670
Children 2 to 3 Years	2554
Children 3 to 4 Years	0
Children 4 to 5 Years	0
Children 5 to 6 Years	0

Total		6659		
How well did we do it (Quality/Efficiency Measures)				
Children Screened for	Immunization Completion 0-36 Type of Screening Completed	6659 # Achieved Measure	6659 # Possible	100.0% %
Of those Children Screened, % referred on for additional services or treatment	2449 # Achieved Measure	6659 # Possible	36.78% %	
Cost per Child for the service	\$18,392.20 Total Cost	6659 # of Children	\$2.76 \$	
What Was the Change in Conditions for Those We Served (Outcome Measures)				
% screened that needed follow up services/treatment that received the service	303 # Achieved Measure	2449 # Possible	12.37% %	
Last Edited By: Cody Williams, 08/25/2015				



Menu | Help | Log Out | Back | Print | Add | Delete | Edit | Save

Grant/Project Tracking

Status Report: ECI-15-015 - 02

Grant: ECI-15-015-Empowerment for the Kids - SFY15
Status: Editing
Program Area: Early Childhood Iowa
Grantee Organization: Empowerment For The Kids
Program Manager: Tami Foley

Instructions

If your board funds two or more transportation programs, combine and report the performance measures data together.
 Use the TAB key to move from one field to the next. When entering financial information, include both dollars and cents, example: 95234.22
Note: This is a two-part form; follow instructions carefully!
 To begin entering information into this form, click "Edit" at the top of the form. You can complete all fields except the "Optional: Other Funding Expended and Source" field. Click "Save" at the top of the form. Now, the "Optional: Other Funding Expended and Source" field is available. If applicable, click "Add" to enter the source and funding amount in the fields. Next, click on "Save" at the top of the form. Repeat this process for each "Optional Funding" entry in this section.

Transportation - Direct Services

Mark as Complete | Go to Status Report Forms

Name of Program or Service Head Start Transportation
List the name of each contractor funded
Contractor North Iowa Community Action Org.
Description Provide transportation services to and from Head Start classrooms in Cerro Gordo, Hancock and Worth counties.
Indicate Program Type: Locally Developed Model
Link to Which Comm. Plan Priority or Priorities Child Abuse 0-5

How much was invested (Input measures)

Fiscal investments must coincide with early childhood financial statement

	Source	
Early Childhood Program		\$0.00
Early Childhood Admin		\$0.00
School Ready-Preschool		\$57,000.00
School Ready-Quality		\$0.00
School Ready-Other/Undesignated		\$0.00
School Ready-Admin		\$0.00
Total		\$57,000.00

Optional: Other Funding Expended and Source

Add

Source	Amount	
		\$0.00

Total Funding

Total \$57,000.00

How much was done or produced (Output measures)

Age of children served (as of September 15)

Output Measures	# done or produced
Prenatal	0
Children 0 to 1 Year	0
Children 1 to 2 Years	0
Children 2 to 3 Years	0
Children 3 to 4 Years	15
Children 4 to 5 Years	27
Children 5 to 6 Years	0
Total	42

How much was done or produced (Output measures)

of days transportation was provided 162
of Days

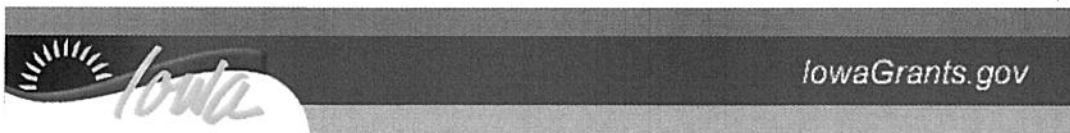
How well did we do it (Quality/Efficiency Measures)

Cost per Child for the service	\$57,000.00	42	\$1,357.14
	Total Cost	# of Children	\$

What Was the Change in Conditions for Those We Served (Outcome Measures)

% of days that children attended preschool that were provided transportation	150	162	92.59%
	= Achieved Measure	# Possible	%

Last Edited By: Cody Williams, 08/31/2015



Menu | Help | Log Out | Back | Print | Add | Delete | Edit | Save

Grant/Project Tracking

Status Report: ECI-15-015 - 02

Grant: ECI-15-015-Empowerment for the Kids - SFY15
Status: Editing
Program Area: Early Childhood Iowa
Grantee Organization: Empowerment For The Kids
Program Manager: Tami Foley

Instructions

If your board funds two or more child care nurse consultant contractors, combine and report the performance measures data together.
 Use the TAB key to move from one field to the next. When entering financial information, include both dollars and cents, example: 95234.22
Note: This is a two-part form; follow instructions carefully!
 To begin entering information into this form, click "Edit" at the top of the form. You can complete all fields except the "Optional: Other Funding Expended and Source" field. Click "Save" at the top of the form. Now, the "Optional: Other Funding Expended and Source" field is available. If applicable, click "Add" to enter the source and funding amount in the fields. Next, click on "Save" at the top of the form. Repeat this process for each "Optional Funding" entry in this section.

Child Care Nurse Consultant - Indirect Services

[Go to Status Report Forms](#)

Name of Program or Service Child Care Nurse Consultant

List the name of each contractor funded.

Contractor North Iowa Community Action Org.
Description The CCNC provides on-site phone and email consultation services to child care providers. The CCNC seeks to improve the health and safety of children in child care and those who care for them. The CCNC assists providers to participate in the QRS to improve the overall quality of childcare in Cerro Gordo, Hancock, and Worth counties.

Indicate Program Type: Research Based / Promising Practice

Link to Which Comm. Plan Priority or Priorities Quality Childcare

How much was invested (Input measures)

Fiscal investments must coincide with early childhood financial statement

	Source	
Early Childhood Program		\$30,630.90
Early Childhood Admin		\$0.00
School Ready - Family Support		\$0.00
School Ready-Preschool		\$0.00
School Ready-Quality		\$369.10
School Ready-Other/Undesignated		\$0.00
School Ready-Admin		\$0.00
Total		\$31,000.00

Optional: Other Funding Expended and Source

[Add](#)

Source	Amount	
		\$0.00

Total Funding

Total \$31,000.00

Output Measures

The total number of visits the child care nurse consultant makes to early learning programs.

of visits by a nurse consultant 47

The total number of programs that participate with the child care nurse.

30

of early learning programs participating in child care nurse consultant activities (unduplicated)

How much was done or produced (Output measures)

The total number of programs in which children received child care nurse consultant services in each category. (You may count a program in more than one category.)

Non-Registered	0
DHS Registered	10
DHS Licensed	20
DE Regulated (licensed exempt from DHS)	0
QRS Level 1	0
QRS Level 2	0
QRS Level 3	6
QRS Level 4	9
QRS Level 5	1

How much was done or produced (Output Measures)

The total number of children that have special health care needs. If there were no children with special health care needs, enter '0.'

of children with special health care needs 15

The total number of direct technical assistance contacts provided to programs by the nurse consultant, other than in-person visits which are reported separately.

of technical assistance contacts 16

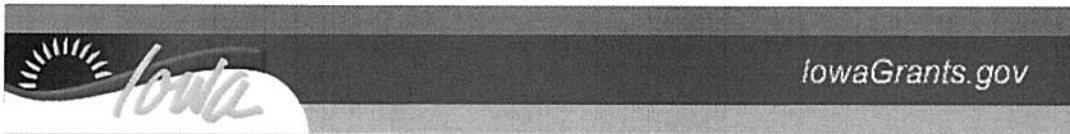
How well did we do it (Quality/Efficiency Measures)

% of programs rating a 3 or higher in the QRS system	16 # Achieved Measure	30 # Possible	53.33% %
Cost per Program for the service	\$31,000.00 Total Cost	30 # of Programs	\$1,033.33 \$

What Was the Change in Conditions for Those We Served (Outcome Measures)

% of children with special health care needs with a special needs care plan in place at the child care facility (program)	14 # Achieved Measure	15 # Possible	93.33% %
% of programs receiving onsite assessment and consultation that improve health and safety conditions in their early learning environments	30 # Achieved Measure	30 # Possible	100.0% %

Last Edited By: Cody Williams, 08/25/2015



[Menu](#) |
 [Help](#) |
 [Log Out](#)

[Back](#) |
 [Print](#) |
 [Add](#) |
 [Delete](#) |
 [Edit](#) |
 [Save](#)

Grant/Project Tracking

Status Report: ECI-15-015 - 02

Grant: ECI-15-015-Empowerment for the Kids - SFY15
Status: Editing
Program Area: Early Childhood Iowa
Grantee Organization: Empowerment For The Kids
Program Manager: Tami Foley

Instructions

If your board funds two or more quality improvement early learning activities, combine and report the performance measures data together.

Use the TAB key to move from one field to the next. When entering financial information, include both dollars and cents, example: 95234.22

Note: This is a two-part form; follow instructions carefully!
 To begin entering information into this form, click "Edit" at the top of the form. You can complete all fields except the "Optional: Other Funding Expended and Source" field. Click "Save" at the top of the form. Now, the "Optional: Other Funding Expended and Source" field is available. If applicable, click "Add" to enter the source and funding amount in the fields. Next, click on "Save" at the top of the form. Repeat this process for each "Optional Funding" entry in this section.

Quality Improvement for Early Learning - Indirect Services

[Go to Status Report Forms](#)

Name of Program or Service CCR&R Child Carre Consultation & Training

List the name of each contractor funded.

Contractor Exceptional Persons Inc.
Description Offer and provide child care consultation, technical assistance and training services to all child care providers in the CHW area.

Indicate Program Type: Research Based / Promising Practice

Link to Which Comm. Plan Priority or Priorities Quality Childcare

How much was invested (Input measures)

Fiscal investments must coincide with early childhood financial statement

	Source
Early Childhood Program	\$50,842.52
Early Childhood Admin	\$0.00
School Ready-Preschool	\$1,817.61
School Ready-Quality	\$1,214.97
School Ready-Other/Undesignated	\$0.00
School Ready-Admin	\$0.00
Total	\$53,875.10

Optional: Other Funding Expended and Source

Add

Source	Amount
	\$0.00

Total Funding

Total \$53,875.10

Output Measures

of early learning programs participating in quality improvement activities (unduplicated) 106

QRS Participation (Output Measures)

The total number of programs participating in the quality improvement activity(ies) at each of the following levels:

QRS Level 1 0
QRS Level 2 9

QRS Level 3 6
 QRS Level 4 18
 QRS Level 5 0

How well did we do it (Quality/Efficiency Measures)

% of programs rating a 3 or higher in the QRS system	24 # Achieved Measure	106 # Possible	22.64% %
---	--------------------------	-------------------	-------------

What Was the Change in Conditions for Those We Served (Outcome Measures)

% of programs that improve or maintain at the highest level their rating in a quality initiative	36 # Achieved Measure	106 # Possible	33.96% %
---	--------------------------	-------------------	-------------

Last Edited By: Cody Williams, 08/25/2015



Menu | Help | Log Out | Back | Print | Add | Delete | Edit | Save

Grant/Project Tracking

Status Report: ECI-15-015 - 02

Grant: ECI-15-015-Empowerment for the Kids - SFY15
Status: Editing
Program Area: Early Childhood Iowa
Grantee Organization: Empowerment For The Kids
Program Manager: Tami Foley

Instructions

*If your board funds two or more preschool scholarship coordination services, combine and report the performance measures data together.
 Use the TAB key to move from one field to the next. When entering financial information, include both dollars and cents, example: 95234.22*

Note: This is a two-part form; follow instructions carefully!
To begin entering information into this form, click "Edit" at the top of the form. You can complete all fields except the "Optional: Other Funding Expended and Source" field. Click "Save" at the top of the form. Now, the "Optional: Other Funding Expended and Source" field is available. If applicable, click "Add" to enter the source and funding amount in the fields. Next, click on "Save" at the top of the form. Repeat this process for each "Optional Funding" entry in this section.

Preschool Scholarship Coordination - Indirect Services

[Mark as Complete](#) | [Go to Status Report Forms](#)

Name of Program or Service Preschool Scholarship Program

List the name of each contractor funded.

Contractor Cerro Gordo, HYancock, Worth Empowerment Board. Fiscal Agent: Cerro Gordo County.

Description Provide Preschool Scholarship management for children under 200% of poverty to private preschool programs, up to \$165 per month for 9 months. Release and review applications for preschool scholarships to ensure they meet required guidelines. Work with preschools to increase quality.

Indicate Program Type: Locally Developed Model

Link to Which Comm. Plan Priority or Priorities Preschool Experience

How much was invested (Input measures)

Fiscal investments must coincide with early childhood financial statement

	Source	
Early Childhood Program		\$0.00
Early Childhood Admin		\$0.00
School Ready-Preschool		\$0.00
School Ready-Quality		\$11,919.40
School Ready-Other/Undesignated		\$0.00
School Ready-Admin		\$0.00
Total		\$11,919.40

Optional: Other Funding Expended and Source

Add

Source Amount

\$0.00

Total Funding

Total \$11,919.40

Output Measures

The total number of tuition assistance applications completed.

of scholarships processed 95

The total number of programs in which children received direct tuition assistance.

of programs (unduplicated) 13

QRS Participation (Output Measures)

The total number of programs in which children received direct tuition assistance at each of the following levels:

QRS Level 3 3

QRS Level 4 6

QRS Level 5

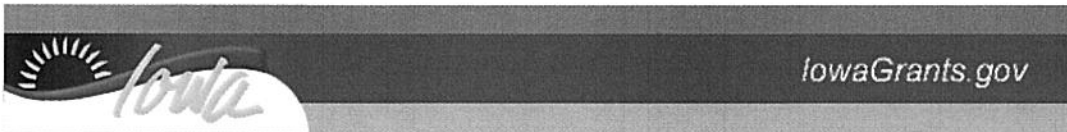
How well did we do it (Quality/Efficiency Measures)

Cost per application	\$11,919.40	95	\$125.47
	Total Cost	# of applications	\$

What Was the Change in Conditions for Those We Served (Outcome Measures)

% of children applying for preschool scholarships who actually receive the scholarship	75 # Achieved Measure	95 # Possible	78.95% %
Children applying for a scholarship that did not receive it. List the reasons:	Too high of income, out of three county area, follow-up information not returned.		20 # Achieved Measure
% of programs rating a 3 or higher in the QRS system	9 # Achieved Measure	13 # Possible	69.23% %

Last Edited By: Cody Williams, 08/31/2015



[Menu](#) |
 [Help](#) |
 [Log Out](#)

[Back](#) |
 [Print](#) |
 [Add](#) |
 [Delete](#) |
 [Edit](#) |
 [Save](#)

Grant/Project Tracking

Status Report: ECI-15-015 - 02

Grant: ECI-15-015-Empowerment for the Kids - SFY15
Status: Editing
Program Area: Early Childhood Iowa
Grantee Organization: Empowerment For The Kids
Program Manager: Tami Foley

Instructions

If your board funds supportive services in two or more early learning programs, combine and report the performance measures data together.

Use the TAB key to move from one field to the next. When entering financial information, include both dollars and cents, example: 95234.22

Note: This is a two-part form; follow instructions carefully!

To begin entering information into this form, click "Edit" at the top of the form. You can complete all fields except the "Optional: Other Funding Expended and Source" field. Click "Save" at the top of the form. Now, the "Optional: Other Funding Expended and Source" field is available. If applicable, click "Add" to enter the source and funding amount in the fields. Next, click on "Save" at the top of the form. Repeat this process for each "Optional Funding" entry in this section.

Early Care & Education Supportive Services - Direct Services

[Mark as Complete](#) | [Go to Status Report Forms](#)

Name of Program or Service Preschool Scholarship

List the name of each contractor funded.

Contractor Board Managed, Cerro Gordo County Fiscal Agent.
 Preschools that recieved scholarships: Clear Lake Clear Creek, Charlie Brown Washington, Charlie Brown Wes Town, Charlie Brown Lake Town, Discovery Time Preschool, Little Lambs Preschool, Newman Preschool, Redemer Preschool, Suagr Plum Preschool, Sunbeam Preschool, Tugs Preschool, West Fork Preschool, West Hancock Preschool.

Description Provide Preschool Scholarship management for children under 200% of poverty to private preschool programs, up to \$165 per month for 9 months.

Indicate Program Type: Locally Developed Model

Link to Which Comm. Plan Priority or Priorities Preschool Experience

How much was invested (Input measures)

Fiscal investments must coincide with early childhood financial statement

	Source	
Early Childhood Program		\$0.00
Early Childhood Admin		\$0.00
School Ready-Family Support		\$0.00
School Ready-Preschool		\$51,498.25
School Ready-Quality		\$0.00
School Ready-Other/Undesignated		\$0.00
School Ready-Admin		\$0.00
Total		\$51,498.25

Optional: Other Funding Expended and Source

Add

Source	Amount
	\$0.00

\$0.00

Total Funding

Total \$51,498.25

How much was done or produced (Output measures)

Age of children served (as of September 15)

	Output Measures	# done or produced
Prenatal		0
Children 0 to 1 Year		0

Children 1 to 2 Years	0
Children 2 to 3 Years	0
Children 3 to 4 Years	33
Children 4 to 5 Years	37
Children 5 to 6 Years	5
Total	75

How much was done or produced (Output Measures)

The total number of programs in which children received services

of Programs 13

Programs Meeting Quality Initiatives (Output Measures)

The total number of programs that meet each of the quality initiatives by category:

NAEYC Accredited

NAFCC Accredited

Head Start

IQPPS Verified

QRS Level 3 3

QRS Level 4 6

QRS Level 5

How well did we do it (Quality/Efficiency Measures)

Children Screened for	Age appropriate skills	75	75	100.0%
	Type of Screening Completed	# Achieved Measure	# Possible	%
Of those Children Screened, % referred on for additional services or treatment	5	75	6.67%	
	# Achieved Measure	# Possible	%	
Cost per Child for the service	\$51,498.25	75	\$686.64	
	Total Cost	# of Children	\$	

What Was the Change in Conditions for Those We Served (Outcome Measures)

% of children demonstrating age appropriate skills	4	75	5.33%
	# Achieved	# Possible	%

Assessments for Determining Age Appropriate Skills

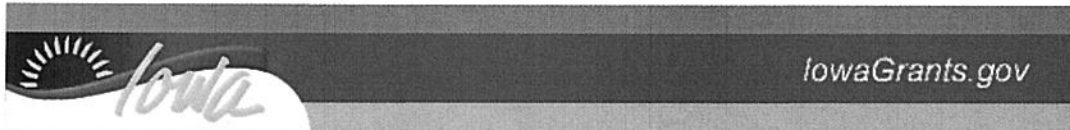
The total number of early learning programs using each of the following assessments:

Gold	7
Creative Curriculum	3
Brigance	
ASQ	2
IGDIs	
High Scope	
Ireton Developmental Checklist	
Saxon Math	
Locally Developed	1

What Was the Change in Conditions for Those We Served (Outcome Measures)

% of programs with a rating of 3 or higher in the QRS system	9	13	69.23%
	# Achieved Measure	# Possible	%

Last Edited By: Cody Williams, 08/31/2015



[Menu](#) |
 [Help](#) |
 [Log Out](#)

[Back](#) |
 [Print](#) |
 [Add](#) |
 [Delete](#) |
 [Edit](#) |
 [Save](#)

Grant/Project Tracking

Status Report: ECI-15-015 - 02

Grant: ECI-15-015-Empowerment for the Kids - SFY15
Status: Editing
Program Area: Early Childhood Iowa
Grantee Organization: Empowerment For The Kids
Program Manager: Tami Foley

Instructions

If your board funds two or more professional development - training opportunities, combine and report the performance measures data together.

Use the TAB key to move from one field to the next. When entering financial information, include both dollars and cents, example: 95234.22

Note: This is a two-part form; follow instructions carefully!

To begin entering information into this form, click "Edit" at the top of the form. You can complete all fields except the "Optional: Other Funding Expended and Source" field. Click "Save" at the top of the form. Now, the "Optional: Other Funding Expended and Source" field is available. If applicable, click "Add" to enter the source and funding amount in the fields. Next, click on "Save" at the top of the form. Repeat this process for each "Optional Funding" entry in this section.

NOTE: Use these measures when funding training opportunities. These opportunities may be one-shot training/workshops or provided as a series, such as ChildNet. For this category, a series is counted as one training opportunity.

Professional Development: Training - Indirect Services

[Go to Status Report Forms](#)

Name of Program or Service TEACH Healthy Practices

List the name of each contractor funded.

Contractor Cerro Gordo Department of Public Health

Description This project offers nutrition and physical activity learning and training opportunities to childcare providers in the 3-county region (Cerro Gordo, Hancock, Worth). Two Nutrition series, entitled LEAN Essentials and LEAN Expectations, equip providers with education and skills on proper nutrition for growing children and pregnant mothers. Nature Explore is a physical activity program equipping providers with outdoor learning and physical activity curriculum for childcare settings.

Indicate Program Type: Research Based / Promising Practice

Link to Which Comm. Plan Priority or Priorities Childhood Obesity

How much was invested (Input measures)

Fiscal investments must coincide with early childhood financial statement

	Source	
Early Childhood Program		\$0.00
Early Childhood Admin		\$0.00
School Ready - Family Support		\$0.00
School Ready-Preschool		\$0.00
School Ready-Quality		\$12,174.66
School Ready-Other/Undesignated		\$0.00
School Ready-Admin		\$0.00
Total		\$12,174.66

Optional: Other Funding Expended and Source

[Add](#)

Source	Amount
	\$0.00

\$0.00

Total Funding

Total \$12,174.66

How much was done or produced (Output Measures)

The total number of trainings funded:

of trainings 10

How much was done or produced (Output Measures)

The total number of trainings funded in each of the following categories (unduplicated by category):

Early Learning 10
Family Support 0
Special Needs 0
Health, Mental Health and Nutrition 0

How well did we do it (Quality/Efficiency Measure)

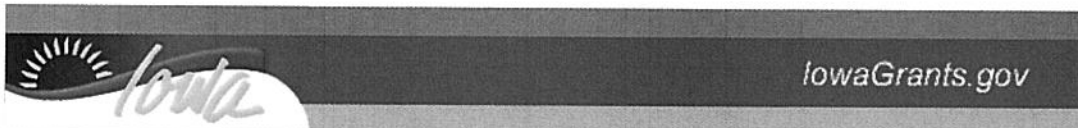
Percentage of the total trainings funded in each of the following categories (unduplicated):

Early Learning	10 # Achieved Measure	10 # Possible	100.0% %
Family Support	0 # Achieved Measure	10 # Possible	0% %
Special Needs	0 # Achieved Measure	10 # Possible	0% %
Health, Mental Health and Nutrition	0 # Achieved Measure	10 # Possible	0% %

Cost per Training:

Cost per Training	\$12,174.66 Total Cost	10 # of Trainings	\$1,217.47 %
--------------------------	---------------------------	----------------------	-----------------

Last Edited By: Cody Williams, 08/25/2015



[Menu](#) |
 [Help](#) |
 [Log Out](#)

[Back](#) |
 [Print](#) |
 [Add](#) |
 [Delete](#) |
 [Edit](#) |
 [Save](#)

Grant/Project Tracking

Status Report: ECI-15-015 - 02

Grant: ECI-15-015-Empowerment for the Kids - SFY15
Status: Editing
Program Area: Early Childhood Iowa
Grantee Organization: Empowerment For The Kids
Program Manager: Tami Foley

Instructions

If your board funds two or more family support home visitation programs, combine and report the performance measures data together.
 Use the TAB key to move from one field to the next. When entering financial information, include both dollars and cents, example: 95234.22
Note: This is a two-part form; follow instructions carefully!
 To begin entering information into this form, click "Edit" at the top of the form. You can complete all fields except the "Optional: Other Funding Expended and Source" field. Click "Save" at the top of the form. Now, the "Optional: Other Funding Expended and Source" field is available. If applicable, click "Add" to enter the source and funding amount in the fields. Next, click on "Save" at the top of the form. Repeat this process for each "Optional Funding" entry in this section.

Family Support - Home Visitation

[Go to Status Report Forms](#)

Name of Program or Service: Family Connections / Building Independence
Contractor: Mercy Medical Center NI / Opportunity Village
Description: Provide a comprehensive and intensive home visitation program 0-5. Provide home visiting services to new or expectant parents who are deemed to be at risk of abusing/neglecting their children. Provide home visitation for those that are diagnosed in the Autistic Spectrum. Home visits are initially frequent, and then continue on a less intensive schedulable.
Indicated Program Type: Research Based / Promising Practicece
Link to Which Comm. Plan Priority or Priorities: Child Abuse 0-5
Linked to all ECI Area priorities.

How much was invested (Input measures)

Fiscal investments must coincide with early childhood financial statement

Source		
School Ready - Family Support		\$224,394.17
School Ready-Preschool		\$0.00
School Ready-Quality		\$0.00
School Ready-Other/Undesignated		\$0.00
School Ready-Admin		\$0.00
Total		\$224,394.17

Optional: Other Funding Expended and Source

Add

Source	Amount	
		\$0.00

Total Funding

Total \$224,394.17

RedCap Report

Attach your RedCap Report here

RedCap Report [FSSD Annual Report FY15-Family Connections-Opportunity Village.pdf](#) [Delete](#)

Last Edited By: Cody Williams, 08/25/2015

**FY15 Annual Report:
Family Connections-
Mercy**

**REDCap Data Export:
7.10.15**

How Much Was Done or Produced? (Output Measures)	Quarter Three	Quarter Four	Annual	Calculation
Number of children (ages 0-5) participating in family support/parent education program this reporting period (unduplicated)	80	76	132	Quarter #s: Quarter Report; Annual #: Demographics- child birthdates (does not include unborn prenatals).
Number of families participating in family support/parent education program this reporting period (unduplicated)			100	Demographics
Number of home visits completed this reporting period	309	297	1129	Quarter Report
Number of group-based parent education meetings attended this reporting period	18	4	37	Quarter Report

Primary care giver race	Mid-Year	Annual #	Annual %	Calculation
Native American or Alaska Native		1	1%	Demographics
Native Hawaiian or Pacific Islander		2	2%	
African American or Black		5	5%	
Asian		0	0%	
White		91	91%	
Multiracial		1	1%	
Total		100	100%	

Primary care giver ethnicity	Mid-Year	Annual #	Annual %	Calculation
Hispanic/Latino		6	6%	Demographics
Not Hispanic/Latino		94	94%	
Total		100	100%	

Primary care giver marital status	Mid-Year	Annual #	Annual %	Calculation
Married		29	29%	Demographics
Partnered		32	32%	
Single		33	33%	
Divorced		3	3%	
Widowed		1	1%	
Separated		2	2%	
Total		100	100%	

Primary care giver education	Mid-Year	Annual #	Annual %	Calculation
Elementary, middle school or lower		2	2%	Demographics
Some high school		25	25%	
High School diploma		22	22%	
GED		5	5%	
Trade or vocational training		2	2%	
Some college		27	27%	
2-year college degree (Associate's)		9	9%	
4-year college degree (Bachelor's)		8	8%	
Master's degree or greater		0	0%	
Total		100	100%	

Other care giver education	Mid-Year	Annual #	Annual %	Calculation
Elementary, middle school or lower		0	0%	Demographics
Some high school		13	20%	
High School diploma		18	27%	
GED		9	14%	
Trade or vocational training		2	3%	
Some college		15	23%	
2-year college degree (Associate's)		4	6%	
4-year college degree (Bachelor's)		5	8%	
Master's degree or greater		0	0%	
Total		66	100%	

Household Size	Mid-Year	Annual #	Annual %	Calculation
1		0	0%	Demographics. Household sizes 13+ not used.
2		33	33%	
3		29	29%	
4		20	20%	
5		12	12%	
6		5	5%	
7+		1	1%	
Total		100	100%	

Federal Poverty Level	Mid-Year	Annual #	Annual %	Calculation
100% or lower		69	70%	Demographics. Household sizes 13+ not used.
101% - 150%		13	13%	
151% - 200%		9	9%	
201% - 299%		8	8%	
300% or higher		0	0%	
Total		99	100%	

Additional Questions	Mid-Year	Annual #s	Annual %	Calculation
Numerator: Number of families enrolled July 1, 2014 and later that meet one or more of the eligibility criteria (income at or below 200% FPL, one or more parents with high school diploma or less, and/or one or more children (0-5) that have an IFSP or IEP).		40	100%	Demographics
Denominator: All families enrolled July 1, 2014 and later.		40		
Numerator: Number of families where one or more children (0-5) are not living with the parents due to out-of-home placement in the DHS foster care system.		6	6%	Demographics
Denominator: All families served in the reporting period.		100		

Numerator: Number of families where one or more caregivers are incarcerated. Denominator: All families served in the reporting period.		6	6%	Demographics
		100		
Numerator: Number of families enrolled prenatally. Denominator: All families served in the reporting period.		27	27%	Demographics
		100		
Numerator: Number of families whose primary language is other than English. Denominator: All families served in the reporting period.		2	2%	Demographics
		100		
Numerator: Number of first time moms at enrollment. Denominator: All families served in the reporting period.		57	57%	Demographics
		100		
Average age of mom at enrollment			25.0	Demographics. Ages ">40" counted as "40".

Additional Questions	Mid-year	Annual #s	Annual %	Calculation
Numerator: Number of mothers screened with EPDS. Denominator: All primary caregivers with a child two years old or younger (does not include prenats).		4	5%	Numerator: Quarter Report; Denominator: Demographics.
		83		
Numerator: Number of mothers with positive depression screens. Denominator: All mothers screened using EPDS.		9	225%	Quarter Report
		4		

Numerator: Number of mothers referred by program staff due to positive EPDS screen. Denominator: All mothers screened positive.		2	22%	Quarter Report
		9		

How Well Did We Do It? (Quality/Efficiency Measures)	QTR 3: achieved measure	QTR 4: achieved measure	Annual: achieved measure	Performance Measure Met?	Calculation
Numerator: Number of children that are age eligible and screened for developmental delays. Denominator: All age eligible children receiving services in the reporting period.	50	46	84	(Program-dependent)	Quarter #'s: Numerator: QR; Denominator: QR- "# of Children 0-5 participating...". Annual #'s: Numerator: QR; Denominator: Demographics- Child 1-5 birthdates.
	80	76	132		
Numerator: Number of children that were referred to Early Intervention services. Denominator: All children screened in the reporting period.	3	1	14	(Program-dependent)	Numerator: Quarter Report; Denominator: Quarter Report-Child 1-5 "screened for developmental delays..."
	50	46	84		

What Was the Change in Conditions for Those We Served? (Annual Outcome Measures)	Mid-Year	Annual #	Annual %	LSP Calculation**
Participating families that improve or maintain healthy functioning, problem solving and communication.		65	88%	LSP items 1 & 2- must improve or maintain on at least one measure.
		74		

Participating families that increase or maintain social supports.		41	55%	LSP item 3- must improve or maintain.
		74		
Participating families that are connected to additional concrete supports.		46	62%	LSP items 11, 20, & 35- must improve on at least one measure.
		74		
Participating families that increase knowledge about child development and parenting.		49	66%	LSP item 7- must improve.
		74		
Participating families that improve nurturing and attachment between parent(s) and child(ren).		22	30%	LSP item 5- must improve.
		74		

*Federal Poverty Level Note: Federal Poverty Levels (FPL) applied based on enrollment year for families enrolled 2012-2015 (~90% of cases). For dates before 2012, 2012 FPLs were applied. **LSP Note: The Initial LSP is compared to a family's most recent LSP. Families without an initial LSP and an on-going FY15 LSP or discharge LSP are not included in any of the above 5 measures. "Maintenance" is only achieved if a family already has a score of 4 or higher.

**FY15 Annual Report:
Opportunity Village**

**REDCap Data Export:
7.10.15**

How Much Was Done or Produced? (Output Measures)	Quarter Three	Quarter Four	Annual	Calculation
Number of children (ages 0-5) participating in family support/parent education program this reporting period (unduplicated)	16	14	19	Quarter #s: Quarter Report; Annual #: Demographics- child birthdates (does not include unborn prenatals).
Number of families participating in family support/parent education program this reporting period (unduplicated)			11	Demographics
Number of home visits completed this reporting period	150	211	530	Quarter Report
Number of group-based parent education meetings attended this reporting period	44	44	133	Quarter Report

Primary care giver race	Mid-Year	Annual #	Annual %	Calculation
Native American or Alaska Native		2	18%	Demographics
Native Hawaiian or Pacific Islander		0	0%	
African American or Black		0	0%	
Asian		1	9%	
White		8	73%	
Multiracial		0	0%	
Total		11	100%	

Primary care giver ethnicity	Mid-Year	Annual #	Annual %	Calculation
Hispanic/Latino		1	9%	Demographics
Not Hispanic/Latino		10	91%	
Total		11	100%	

Primary care giver marital status	Mid-Year	Annual #	Annual %	Calculation
Married		11	100%	Demographics
Partnered		0	0%	
Single		0	0%	
Divorced		0	0%	
Widowed		0	0%	
Separated		0	0%	
Total		11	100%	

Primary care giver education	Mid-Year	Annual #	Annual %	Calculation
Elementary, middle school or lower		1	9%	Demographics
Some high school		0	0%	
High School diploma		4	36%	
GED		0	0%	
Trade or vocational training		0	0%	
Some college		0	0%	
2-year college degree (Associate's)		3	27%	
4-year college degree (Bachelor's)		1	9%	
Master's degree or greater		2	18%	
Total		11	100%	

Other care giver education	Mid-Year	Annual #	Annual %	Calculation
Elementary, middle school or lower		1	9%	Demographics
Some high school		2	18%	
High School diploma		1	9%	
GED		0	0%	
Trade or vocational training		0	0%	
Some college		2	18%	
2-year college degree (Associate's)		0	0%	
4-year college degree (Bachelor's)		1	9%	
Master's degree or greater		4	36%	
Total		11	100%	

Household Size	Mid-Year	Annual #	Annual %	Calculation
1		0	0%	Demographics. Household sizes 13+ not used.
2		0	0%	
3		0	0%	
4		5	45%	
5		5	45%	
6		0	0%	
7+		1	9%	
Total		11	100%	

Federal Poverty Level	Mid-Year	Annual #	Annual %	Calculation
100% or lower		4	44%	Demographics. Household sizes 13+ not used.
101% - 150%		1	11%	
151% - 200%		2	22%	
201% - 299%		2	22%	
300% or higher		0	0%	
Total		9	100%	

Additional Questions	Mid-Year	Annual #s	Annual %	Calculation
Numerator: Number of families enrolled July 1, 2014 and later that meet one or more of the eligibility criteria (income at or below 200% FPL, one or more parents with high school diploma or less, and/or one or more children (0-5) that have an IFSP or IEP). Denominator: All families enrolled July 1, 2014 and later.		7 7	100%	Demographics
Numerator: Number of families where one or more children (0-5) are not living with the parents due to out-of-home placement in the DHS foster care system. Denominator: All families served in the reporting period.		0 11	0%	Demographics

Numerator: Number of families where one or more caregivers are incarcerated. Denominator: All families served in the reporting period.		0	0%	Demographics
		11		
Numerator: Number of families enrolled prenatally. Denominator: All families served in the reporting period.		0	0%	Demographics
		11		
Numerator: Number of families whose primary language is other than English. Denominator: All families served in the reporting period.		4	36%	Demographics
		11		
Numerator: Number of first time moms at enrollment. Denominator: All families served in the reporting period.		3	27%	Demographics
		11		
Average age of mom at enrollment			34.0	Demographics. Ages ">40" counted as "40".

Additional Questions	Mid-year	Annual #s	Annual %	Calculation
Numerator: Number of mothers screened with EPDS. Denominator: All primary caregivers with a child two years old or younger (does not include prenats).		0	0%	Numerator: Quarter Report; Denominator: Demographics.
		7		
Numerator: Number of mothers with positive depression screens. Denominator: All mothers screened using EPDS.		0	0%	Quarter Report
		0		

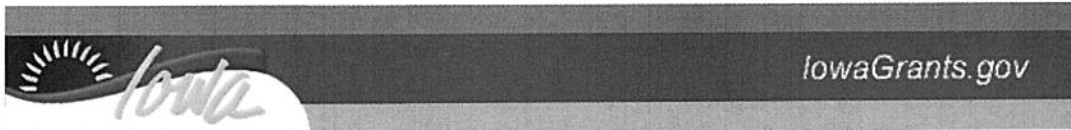
Numerator: Number of mothers referred by program staff due to positive EPDS screen. Denominator: All mothers screened positive.		0	0%	Quarter Report
		0		

How Well Did We Do It? (Quality/Efficiency Measures)	QTR 3: achieved measure	QTR 4: achieved measure	Annual: achieved measure	Performance Measure Met?	Calculation
Numerator: Number of children that are age eligible and screened for developmental delays. Denominator: All age eligible children receiving services in the reporting period.	8	7	12	(Program-dependent)	Quarter #'s: Numerator: QR; Denominator: QR- "# of Children 0-5 participating...". Annual #'s: Numerator: QR; Denominator: Demographics- Child 1-5 birthdates.
	16	14	19		
Numerator: Number of children that were referred to Early Intervention services. Denominator: All children screened in the reporting period.	0	1	2	(Program-dependent)	Numerator: Quarter Report; Denominator: Quarter Report- Child 1-5 "screened for developmental delays..."
	8	7	12		

What Was the Change in Conditions for Those We Served? (Annual Outcome Measures)	Mid-Year	Annual #	Annual %	LSP Calculation**
Participating families that improve or maintain healthy functioning, problem solving and communication.		0	0%	LSP items 1 & 2- must improve or maintain on at least one measure.
		1		

Participating families that increase or maintain social supports.		0	0%	LSP item 3- must improve or maintain.
		1		
Participating families that are connected to additional concrete supports.		0	0%	LSP items 11, 20, & 35- must improve on at least one measure.
		1		
Participating families that increase knowledge about child development and parenting.		0	0%	LSP item 7- must improve.
		1		
Participating families that improve nurturing and attachment between parent(s) and child(ren).		0	0%	LSP item 5- must improve.
		1		

*Federal Poverty Level Note: Federal Poverty Levels (FPL) applied based on enrollment year for families enrolled 2012-2015 (~90% of cases). For dates before 2012, 2012 FPLs were applied. **LSP Note: The Initial LSP is compared to a family's most recent LSP and an on-going FY15 LSP or discharge LSP are not included in any of the above 5 measures. "Maintenance" is only achieved if a family already has a score of 4 or higher.



[Menu](#) | [Help](#) | [Log Out](#)

[Back](#) | [Print](#) | [Add](#) | [Delete](#) | [Edit](#) | [Save](#)

Grant/Project Tracking

Status Report: ECI-15-015 - 02

Grant: ECI-15-015-Empowerment for the Kids - SFY15
Status: Editing
Program Area: Early Childhood Iowa
Grantee Organization: Empowerment For The Kids
Program Manager: Tami Foley

Instructions

If your board funds two or more family support parent education programs, combine and report the performance measures data together.
 Use the TAB key to move from one field to the next. When entering financial information, include both dollars and cents, example: 95234.22

Note: This is a two-part form; follow instructions carefully!
 To begin entering information into this form, click "Edit" at the top of the form. You can complete all fields except the "Optional: Other Funding Expended and Source" field. Click "Save" at the top of the form. Now, the "Optional: Other Funding Expended and Source" field is available. If applicable, click "Add" to enter the source and funding amount in the fields. Next, click on "Save" at the top of the form. Repeat this process for each "Optional Funding" entry in this section.

Family Support - Parent Education

[Go to Status Report Forms](#)

Name of Program or Service: Parent Education
Contractor: North Iowa Community Action Org.
Description: Classes will run for minimum of 6 weeks from September through Early December with a winter break, resuming January through early April. Parents will be surveyed regarding topics they want to learn more about as well as those identified on the Protective Factors Survey. Topics may include: child guidance, child development, parenting skills, literacy, transition to kindergarten, kindergarten readiness, health and nutrition, community resources, budgeting, preschool math skills, etc.
Indicated Program Type: Research Based / Promising Practice
Link to Which Comm. Plan Priority or Priorities: Child Abuse 0-5
Linked to all ECI Area priorities.

How much was invested (Input measures)

Fiscal investments must coincide with financial statements

	Source	
School Ready - Family Support		\$52,597.59
School Ready-Preschool		\$11,381.37
School Ready-Quality		\$0.00
School Ready-Other/Undesignated		\$0.00
School Ready-Admin		\$0.00
Total		\$63,978.96

Optional: Other Funding Expended and Source

Add

Source	Amount	
		\$0.00

Total Funding

Total \$63,978.96

RedCap Report

Attach your RedCap Report here

RedCap Report FSSD Annual Report FY15- Parent Education.pdf [Delete](#)

Last Edited By: Cody Williams, 08/25/2015

**FY15 Annual Report:
Parent Education**

**REDCap Data Export:
7.10.15**

How Much Was Done or Produced? (Output Measures)	Quarter Three	Quarter Four	Annual	Calculation
Number of children (ages 0-5) participating in family support/parent education program this reporting period (unduplicated)	49	27	76	Quarter #s: Quarter Report; Annual #: Demographics-child birthdates (does not include unborn prenatals).
Number of families participating in family support/parent education program this reporting period (unduplicated)			63	Demographics
Number of home visits completed this reporting period	0	0	0	Quarter Report
Number of group-based parent education meetings attended this reporting period	141	39	343	Quarter Report

Primary care giver race	Mid-Year	Annual #	Annual %	Calculation
Native American or Alaska Native		0	0%	Demographics
Native Hawaiian or Pacific Islander		0	0%	
African American or Black		0	0%	
Asian		2	3%	
White		61	97%	
Multiracial		0	0%	
Total		63	100%	

Primary care giver ethnicity	Mid-Year	Annual #	Annual %	Calculation
Hispanic/Latino		1	2%	Demographics
Not Hispanic/Latino		62	98%	
Total		63	100%	

Primary care giver marital status	Mid-Year	Annual #	Annual %	Calculation
Married		54	86%	Demographics
Partnered		0	0%	
Single		4	6%	
Divorced		4	6%	
Widowed		0	0%	
Separated		1	2%	
Total		63	100%	

Primary care giver education	Mid-Year	Annual #	Annual %	Calculation
Elementary, middle school or lower		0	0%	Demographics
Some high school		1	2%	
High School diploma		7	11%	
GED		0	0%	
Trade or vocational training		2	3%	
Some college		17	27%	
2-year college degree (Associate's)		11	17%	
4-year college degree (Bachelor's)		17	27%	
Master's degree or greater		8	13%	
Total		63	100%	

Other care giver education	Mid-Year	Annual #	Annual %	Calculation
Elementary, middle school or lower		0	0%	Demographics
Some high school		0	0%	
High School diploma		0	0%	
GED		0	0%	
Trade or vocational training		1	14%	
Some college		3	43%	
2-year college degree (Associate's)		0	0%	
4-year college degree (Bachelor's)		1	14%	
Master's degree or greater		2	29%	
Total		7	100%	

Household Size	Mid-Year	Annual #	Annual %	Calculation
1		0	0%	Demographics. Household sizes 13+ not used.
2		3	5%	
3		8	13%	
4		28	44%	
5		15	24%	
6		9	14%	
7+		0	0%	
Total		63	100%	

Federal Poverty Level	Mid-Year	Annual #	Annual %	Calculation
100% or lower		11	17%	Demographics. Household sizes 13+ not used.
101% - 150%		7	11%	
151% - 200%		17	27%	
201% - 299%		20	32%	
300% or higher		8	13%	
Total		63	100%	

Additional Questions	Mid-Year	Annual #s	Annual %	Calculation
<p>Numerator: Number of families enrolled July 1, 2014 and later that meet one or more of the eligibility criteria (income at or below 200% FPL, one or more parents with high school diploma or less, and/or one or more children (0-5) that have an IFSP or IEP).</p> <p>Denominator: All families enrolled July 1, 2014 and later.</p>		<p>38</p> <p>63</p>	60%	Demographics
<p>Numerator: Number of families where one or more children (0-5) are not living with the parents due to out-of-home placement in the DHS foster care system.</p> <p>Denominator: All families served in the reporting period.</p>		<p>0</p> <p>63</p>	0%	Demographics

Numerator: Number of families where one or more caregivers are incarcerated. Denominator: All families served in the reporting period.		0 63	0%	Demographics
Numerator: Number of families enrolled prenatally. Denominator: All families served in the reporting period.		0 63	0%	Demographics
Numerator: Number of families whose primary language is other than English. Denominator: All families served in the reporting period.		0 63	0%	Demographics
Numerator: Number of first time moms at enrollment. Denominator: All families served in the reporting period.		22 63	35%	Demographics
Average age of mom at enrollment			32.0	Demographics. Ages ">40" counted as "40".

Additional Questions	Mid-year	Annual #s	Annual %	Calculation
Numerator: Number of mothers screened with EPDS. Denominator: All primary caregivers with a child two years old or younger (does not include prenatals).		0 24	0%	Numerator: Quarter Report; Denominator: Demographics.
Numerator: Number of mothers with positive depression screens. Denominator: All mothers screened using EPDS.		0 0	0%	Quarter Report

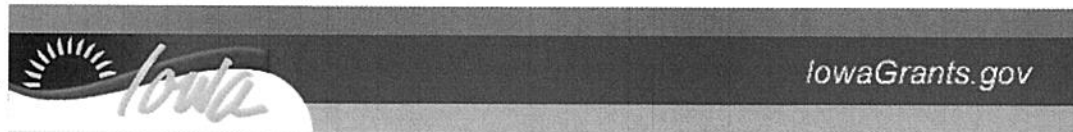
Numerator: Number of mothers referred by program staff due to positive EPDS screen. Denominator: All mothers screened positive.		1	0%	Quarter Report
		0		

How Well Did We Do It? (Quality/Efficiency Measures)	QTR 3: achieved measure	QTR 4: achieved measure	Annual: achieved measure	Performance Measure Met?	Calculation
Numerator: Number of children that are age eligible and screened for developmental delays. Denominator: All age eligible children receiving services in the reporting period.	15	6	24	(Program-dependent)	Quarter #'s: Numerator: QR; Denominator: QR- "# of Children 0-5 participating...". Annual #'s: Numerator: QR; Denominator: Demographics- Child 1-5 birthdates.
	49	27	76		
Numerator: Number of children that were referred to Early Intervention services. Denominator: All children screened in the reporting period.	0	1	5	(Program-dependent)	Numerator: Quarter Report; Denominator: Quarter Report- Children 1-5 "screened for developmental delays..."
	15	6	24		

What Was the Change in Conditions for Those We Served? (Annual Outcome Measures)	Mid-Year	Annual #	Annual %	Calculation**
Participating families that <i>improve or maintain</i> healthy functioning, problem solving and communication.		23	79%	PFS items 1,2,3,4, & 5 (average). Maintenance only if sum ≥ 20 .
		29		

Participating families that <i>increase or maintain</i> social supports.		17	59%	PFS items 6,7, & 10 (average). Maintenance only if sum ≥ 15 .
		29		
Participating families that are connected to additional concrete supports.		7	24%	PFS items 8*, 9*, & 11* (average).
		29		
Participating families that <i>increase</i> knowledge about child development and parenting.		9	31%	PFS items 12*, 13, 14*, 15, & 16* (average).
		29		
Participating families that <i>improve</i> nurturing and attachment between parent(s) and child(ren).		9	31%	PFS items 17, 18, 19, & 20 (average).
		29		
				*Indicates scores inverted before totalling.

*Federal Poverty Level Note: Federal Poverty Levels (FPL) applied based on enrollment year for families enrolled 2012-2015 (~90% of cases). For dates before 2012, 2012 FPLs were applied. **PFS Note: For each outcome measure, scores are thrown out if >1 response is missing for the given question (in either survey). The entire survey is thrown out if question 1 *and* other questions (from q's 1-11) are missing.



Menu |
 Help |
 Log Out
 Back |
 Print |
 Add |
 Delete |
 Edit |
 Save

Grant/Project Tracking

Status Report: ECI-15-015 - 02

Grant: ECI-15-015-Empowerment for the Kids - SFY15
Status: Editing
Program Area: Early Childhood Iowa
Grantee Organization: Empowerment For The Kids
Program Manager: Tami Foley

Instructions

Purpose: To provide guidance and support to the local Early Childhood Board, develop and strengthen community partnerships, enhance the early childhood system, and coordinate and monitor contracted services.

If there are two or more staff, combine and report all data together.

Use the TAB key to move from one field to the next. When entering financial information, include both dollars and cents, example: 95234.22

Note: This is a two-part form; follow instructions carefully!

To begin entering information into this form, click "Edit" at the top of the form. You can complete all fields except the "Optional: Other Funding Expended and Source" field. Click "Save" at the top of the form. Now, the "Optional: Other Funding Expended and Source" field is available. If applicable, click "Add" to enter the source and funding amount in the fields. Next, click on "Save" at the top of the form. Repeat this process for each "Optional Funding" entry in this section.

Administrative Staff (service coordination and collaboration)

[Go to Status Report Forms](#)

Name(s) of Administrative Staff Cody Williams, Nicole Lucas
Employer of Record Turning Leaf Counseling, Inc

How much was invested (Input measures)

Fiscal investments must coincide with early childhood financial statement

	Source	
Early Childhood Admin		\$2,125.70
School Ready-Preschool		\$0.00
School Ready-Quality		\$21,134.76
School Ready-Other/Undesignated		\$0.00
School Ready-Admin		\$7,684.46
Total		\$30,944.92

Optional: Other Funding Expended and Source

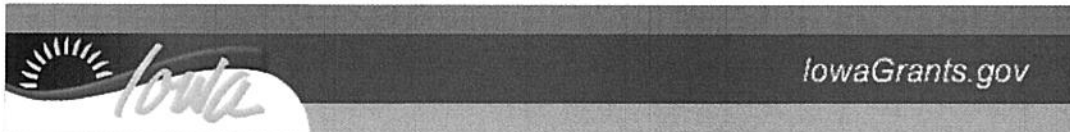
Add

Source	Amount	Add
		\$0.00

Total Funding

Total \$30,944.92

Last Edited By: Cody Williams, 08/25/2015



[Menu](#) |
 [Help](#) |
 [Log Out](#)

[Back](#) |
 [Print](#) |
 [Add](#) |
 [Delete](#) |
 [Edit](#) |
 [Save](#)

Grant/Project Tracking

Status Report: ECI-15-015 - 02

Grant: ECI-15-015-Empowerment for the Kids - SFY15
Status: Editing
Program Area: Early Childhood Iowa
Grantee Organization: Empowerment For The Kids
Program Manager: Tami Foley

Instructions

Use the TAB key to move from one field to the next. Include both dollars and cents, example: 95234.22
 Refer to Tool G for appropriate funds available for administrative expenses.

Administrative Expenses - Early Childhood Funds

[Go to Status Report Forms](#)

Fiscal Investments Must Coincide With Early Childhood Financial Statements

Early Childhood Expenses/Fees

Fiscal Agent Fees	\$0.00
Liability Insurance Fees	\$289.00
Financial Audit Fees	\$425.00
Board Expenses	\$1,372.40
Other (non program) describe below	\$0.00
Total	\$2,086.40

Description

Early Childhood Other (non-program)
 Description

Administrative Expenses - School Ready Funds

Fiscal Investments Must Coincide With School Ready Financial Statement

School Ready Funds Expenses/Fees

	Admin	Quality	Other/Undesignated	Total
Fiscal Agent Fees	\$0.00	\$0.00	\$0.00	\$0.00
Liability Insurance fees	\$1,336.00	\$0.00	\$0.00	\$1,336.00
Financial Audit fees	\$2,075.00	\$0.00	\$0.00	\$2,075.00
Board Expenses	\$4,006.54	\$1,827.06	\$0.00	\$5,833.60
Other (non-program) describe below	\$0.00	\$0.00	\$0.00	\$0.00
Total	\$7,417.54	\$1,827.06	\$0.00	\$9,244.60

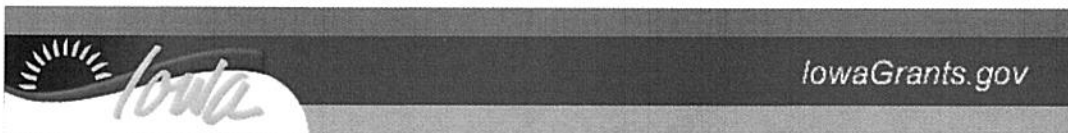
Description

School Ready Other (non-program)
 Description

School Ready

School Ready Expenses/Fees	School Ready Family Support	School Ready Preschool Support	Total
Financial Audit Fees	\$0.00		\$0.00

Last Edited By: Cody Williams, 08/25/2015



[Menu](#) |
 [Help](#) |
 [Log Out](#)

[Back](#) |
 [Print](#) |
 [Add](#) |
 [Delete](#) |
 [Edit](#) |
 [Save](#)

Grant/Project Tracking

Status Report: ECI-15-015 - 02

Grant: ECI-15-015-Empowerment for the Kids - SFY15
Status: Editing
Program Area: Early Childhood Iowa
Grantee Organization: Empowerment For The Kids
Program Manager: Tami Foley

Confirmation_question

[Go to Status Report Forms](#)

Did you complete all the required forms? * Yes

Early Childhood State Program

Funding	Direct Services	Indirect Services	Total Expended
Early Childhood State Program	\$0.00	\$81,473.42	\$81,473.42

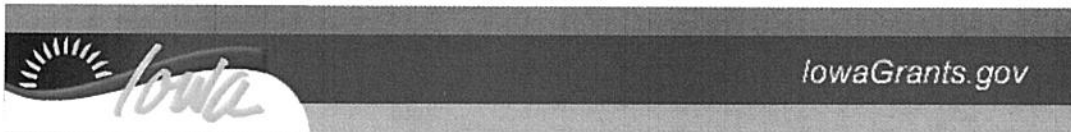
Early Childhood State Admin

Funding	Direct Services	Indirect Services	Administrative Staff	Administrative Expenses	Total Expended
Early Childhood State Admin	\$0.00	\$0.00	\$2,125.70	\$2,086.40	\$4,212.10

Early Childhood Funds Total

Early Childhood Funds Total \$85,685.52

Last Edited By: Cody Williams, 08/25/2015



Menu | Help | Log Out | Back | Print | Add | Delete | Edit | Save

Grant/Project Tracking

Status Report: ECI-15-015 - 02

Grant: ECI-15-015-Empowerment for the Kids - SFY15
Status: Editing
Program Area: Early Childhood Iowa
Grantee Organization: Empowerment For The Kids
Program Manager: Tami Foley

Confirmation_question

[Go to Status Report Forms](#)

Did you complete all the required forms?* Yes

School Ready- Family Support

Funding	Direct Services	Indirect Services	Administrative Expenses	Total Expended
School Ready- Family Support	\$276,991.76	\$0.00	\$0.00	\$276,991.76

School Ready- Preschool

Funding	Direct Services	Indirect Services	Administrative Staff	Administrative Expenses	Total Expended
School Ready- Preschool	\$119,879.62	\$1,817.61	\$0.00	\$0.00	\$121,697.23

School Ready - Quality

Funding	Direct Services	Indirect Services	Administrative Staff	Administrative Expenses	Total Expended
School Ready - Quality	\$5,544.78	\$25,678.13	\$21,134.76	\$1,827.06	\$54,184.73

School Ready- Other/Undesignated

Funding	Direct Services	Indirect Services	Administrative Staff	Administrative Expenses	Total Expended
School Ready- Other/Undesignated	\$29,157.56	\$0.00	\$0.00	\$0.00	\$29,157.56

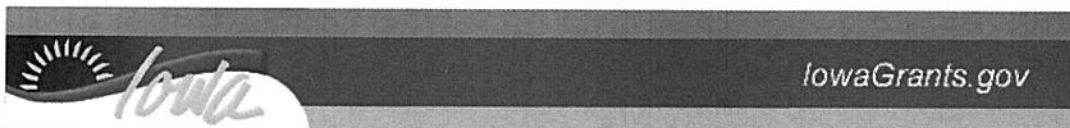
School Ready- Admin

Funding	Direct Services	Indirect Services	Administrative Staff	Administrative Expenses	Total Expended
School Ready- Admin	\$0.00	\$0.00	\$7,684.46	\$7,417.54	\$15,102.00

School Ready Funds Total

School Ready Funds Total \$497,133.28

Last Edited By: Cody Williams, 08/25/2015



Menu |
 Help |
 Log Out
 Back |
 Print |
 Add |
 Delete |
 Edit |
 Save

Grant/Project Tracking

Status Report: ECI-15-015 - 02

Grant: ECI-15-015-Empowerment for the Kids - SFY15

Status: Editing

Program Area: Early Childhood Iowa

Grantee Organization: Empowerment For The Kids

Program Manager: Tami Foley

Instructions

[Click here to download the Early Childhood Financial Statement](#)
[Click here to download the School Ready Financial Statement](#)

Financial Statement Attachment

[Mark as Complete](#) | [Go to Status Report Forms](#)

Attachment	Description	File Name	File Size	Type	Delete?
Early Childhood Financial Statement	2015 EC Financial Statment	ECFinancialStatement.xlsx	106.5 MB	xlsx	
Certified Early Childhood Financial Statement			106.5 MB		
School Ready Financial Statement	2015 SR Financial Statment	SRFinancialStatement.xlsx	106.5 MB	xlsx	
Certified School Ready Financial Statement			106.5 MB		

Last Edited By: Cody Williams, 08/25/2015

A	B	D	E
	EARLY CHILDHOOD STATE FUNDS UNDER EARLY CHILDHOOD IOWA		
	Early Childhood Iowa Area: Cerro Gordo, Hancock, Worth	FY14	FY15
		<i>This column must match the final FY14 financial statement submitted by the ECIA.</i>	
	Revenues		
	Current allocation for Admin. (not to exceed 5% of total award) for Reporting Year	\$3,603.45	\$4,212.10
	Program/Service Funds	\$68,465.55	\$80,029.90
	Subtotal current award	\$72,069.00	\$84,242.00
	Carry-forward from Previous Years available for current reporting year		
	Brought Forward-Administration	\$0.00	\$0.00
	Brought Forward -- Program/Service Funds	\$0.00	\$1,443.52
	Interest (Must be used in Program and not Administration)	\$0.00	
	Subtotal carryover funds	\$0.00	\$1,443.52
	Total Available funds	\$72,069.00	\$85,685.52
	Current Year Available Funds (Current Allocation plus Carry-forward) by Category		
	Administration (not to exceed 5% of total award)	\$3,603.45	\$4,212.10
	Program/Service Funds includes Carry-forward Interest	\$68,465.55	\$81,473.42
	Interest Earned During Current Fiscal Year	\$13.84	\$17.00
	Total Available funds by category including Interest Earned in Reporting Year	\$72,082.84	\$85,702.52
	Expenditures (Reporting Year)		
	Administrative Expenditures (not to exceed 5% of total award)		
	Fiscal Agent fees		
	Liability Insurance fees	\$300.00	\$289.00
	Financial Audit fees	\$500.00	\$425.00
	Board Expenses	\$2,803.45	\$1,372.40
	Administrative Staff (ECIA director, support staff, etc.)	\$0.00	\$2,125.70
	Other		
	Program/Service Expenditures	\$67,035.87	\$81,473.42
	Total Expenditures Reporting Year	\$70,639.32	\$85,685.52
	Unexpended Balance of Funds (Reporting Year)		

Administration	\$0.00	\$0.00
Program/Service Funds	\$1,443.52	\$17.00
Unexpended Balance of Funds for Reporting Year (Carry-forward to next year)	\$1,443.52	\$17.00
Carry Forward Percentage		0%
I hereby verify that the information contained in this financial statement is true and reflects the ending balance at the close of fiscal year.		
Fiscal Agent Signature		
On behalf of:		
Name of Early Childhood Iowa Area Represented		

	SCHOOL READY FUNDS UNDER EARLY CHILDHOOD IOWA Early Childhood Iowa Area: Cerro Gordo, Hancock, Worth	FY 14 <i>This column must match the final FY14 financial statement submitted by the ECIA.</i>	FY 15
Revenues			
	Current allocation for Administration (not to exceed 3% of total award) for Reporting Year	\$15,068.00	\$14,693.00
	Family Support and Parent Education	\$280,287.00	\$272,633.00
	Preschool Support for Low-Income Families	\$123,066.00	\$119,706.00
	Quality Improvement Funds	\$54,081.00	\$53,837.00
	Other Programs/Services	\$30,226.00	\$29,454.00
	Subtotal current award	\$502,728.00	\$490,323.00
Carry-forward from Previous Years: Available for Current Reporting Year			
	Brought Forward - Administration	\$2,500.70	\$484.00
	Brought Forward - Family Support and Parent Education	\$13,120.84	\$5,946.20
	Brought Forward - Preschool Support for Low Incomes Families	\$35,780.12	\$20,302.72
	Brought Forward - Quality Improvement Funds	\$1,111.49	\$347.74
	Brought Forward - Other Programs/Services (includes interest applied)	\$662.41	\$249.12
	Subtotal Carry-forward funds	\$53,175.56	\$27,329.78
	Total Available funds	\$555,903.56	\$517,652.78
Total Available Funds for Reporting Year			
	Administration (not to exceed 3% of total award)	\$17,568.70	\$15,177.00
	Family Support and Parent Education	\$293,407.84	\$278,579.20
	Preschool Support for Low Incomes Families	\$158,846.12	\$140,008.72
	Quality Improvement Funds	\$55,192.49	\$54,184.74
	Other Programs/Services	\$30,888.41	\$29,703.12
	Interest Accrued in Current Fiscal Year (Must be used in Program and not Administration)	\$79.58	\$65.17
	Grand Total Budget for Reporting Year	\$555,983.14	\$517,717.95
Expenditures (Reporting Year)			
	Administration Expenditures (not to exceed 3% of total award)		
	Fiscal Agent fees		
	Liability Insurance fees	\$1,316.00	\$1,336.00
	Financial Audit fees	\$2,000.00	\$2,075.00
	Board Expenses	\$3,182.68	\$4,006.54
	Administrative Staff (ECIA director, support staff, etc.)	\$10,586.02	\$7,684.46

Other			
Family Support and Parent Education	\$287,461.64		\$276,991.76
Preschool Support for Low Incomes Families	\$138,543.40		\$121,697.23
Quality Improvement Funds	\$54,844.75		\$54,184.73
Other Programs/Services includes Interest Applied	\$30,718.87		\$29,157.56
Grand Total Expenditures for Reporting Year	\$528,653.36		\$497,133.28
Unexpended Balance of Funds for Reporting Year			
(Becomes Carry-forward in 1st succeeding year)			
Administration (not to exceed 3% of total award)	\$484.00		\$75.00
Family Support and Parent Education (0-5 Funds)	\$5,946.20		\$1,587.44
Preschool Support for Low Incomes Families	\$20,302.72		\$18,311.49
Quality Improvement Funds	\$347.74		\$0.01
Other Programs/Services includes Interest Applied	\$249.12		\$610.73
Unexpended Balance of Funds (Reporting Year)	\$27,329.78		\$20,584.67
Carryforward Percentage			4%
FY'13 Amount over 20% into FY'14			
FY'14 Amount over 20% into FY'15			
Amount subject to 20% Carryforward	\$27,329.78		\$20,584.67
Maximum Allowable Carry-forward to next year (20% of total current award)	\$100,545.60		\$98,064.60
Overage (Reduced from second succeeding year payments)	\$0.00		\$0.00

I hereby verify that the information contained in this financial statement is true and reflects the ending balance at the close of fiscal year.

Fiscal Agent Signature

On behalf of:

Name of Early Childhood Iowa Area Represented