

SOUTHERN TIDE

2023

GOLF



ABOUT SOUTHERN TIDE

Founded in 2006, Greenville, S.C.-based Southern Tide is a coastal lifestyle apparel brand that embodies a Southern state of mind and adventurous spirit. Southern Tide is best known for its Skipjack Polo, deemed by many to be the most comfortable premium polo shirt. Innovative, yet timeless in its youthful style, Southern Tide offers an array of apparel and accessory products for men, women, and kids that deliver their authentic lifestyle through quality, experience, and service.

WE ARE:

SOUTHERN | COASTAL | PREMIUM | ENERGETIC | AUTHENTIC | STORYTELLERS | EXPERIENTIAL

SCAN

for our imagery
and other fun
Marketing assets!



CATALOG CONTENTS

WOMEN'S	4
MEN'S 12/25	26
MEN'S 1/25	38
MEN'S 2/25	50
MEN'S 3/25	57
MEN'S 4/25	62
MEN'S 5/25	69
MEN'S 6/25	73
MEN'S 7/25	75
MEN'S 8/25	79
MEN'S 9/25	83
YOUTH	86

INSPIRATION

It's the one thing that comes around every week regardless of the circumstances. It's usually the thing people look forward to most and that typically sparks a sense of excitement, joy, adventure, or relaxation. The weekend. That blessed time off from obligations and work and moments to spend on yourself, your family, friends, pets, home, or hobbies. Southern Tide is the weekend of all brands. We aspire to be the brand everyone is excited to wear and look forward to putting on. We don't want to be your average Monday-Thursday, 9-5 that lacks joy and energy. The clothing you must wear because of the place of your employment. No, we want to inspire everyone to live every day like that weekend feeling: energetic, optimistic, casual, but ready for any adventure life throws our way!

ICONS KEY



QUICK-DRY



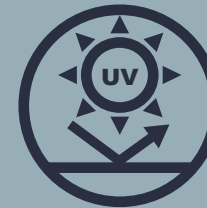
WICKING



STRETCH



JADE COOLING TECHNOLOGY



UV PROTECTION



BRRR COOLING TECHNOLOGY



WATER REPELLENT



SUSTAINABLE MATERIALS



ANTI-MICROBIAL

ORDER FROM REPSARK: [app.repspark.com / stide](https://app.repspark.com/stide)



CHECK INVENTORY AVAILABILITY 24/7



CHECK ORDER STATUS & TRACKING INFO



SHARE ORDER WITH OUTSIDE REP



BROWSE A CATALOG OR ALL PRODUCTS WITHOUT ORDERING



ONLINE ASSISTANCE AVAILABLE



PLACE ORDERS ANYTIME



COPY SIZE RUNS FOR FASTER ORDERING



CREATE MULTIPLE SHIPMENT ORDERS



ACCESS TO DIGITAL ASSETS & POS SIGNAGE



CUSTOM ORDERING



DOWNLOAD PRODUCT UPCs



TOURNAMENT/EVENT PACKAGES

PERFORMANCE



CLASSICS

WOMEN'S

Malia Racerback Tank | 12/25   

10013 Sleeveless | Scoop neck | Moisture wicking | Stretch | UV protection | Skipjack reflective heat seal on wearer's left hem | 91% Nylon 9% Spandex | XS-XL | 68003000

Neeley brrr^o Performance Short | 12/25    

10560 3" inseam | Quick dry w/moisture management | Stretch for added mobility | Moisture wicking | brrr^o | On seam pockets | Grossgrain elastic drawcord with rubber coated ends | Non-roll elastic waistband | Outline Skipjack embroidery on wearer's left hem | 46% Polyester 40% brrr^o Polyester 14% Spandex | XS-XL | 95004200

Linley brrr^o illiant Perf Hoodie | 12/25     

10326 Long sleeve | Active Skipjack reflective heat transfer | Quick dry w/moisture management | Stretch | UV protection | brrr^o cooling | 46% brrr^o Polyester 46% Polyester 8% Spandex | XS-XL | 95004275



CLASSIC WHITE
(10013)

NAUTICAL NAVY
(10013)



NAUTICAL NAVY
(10560)

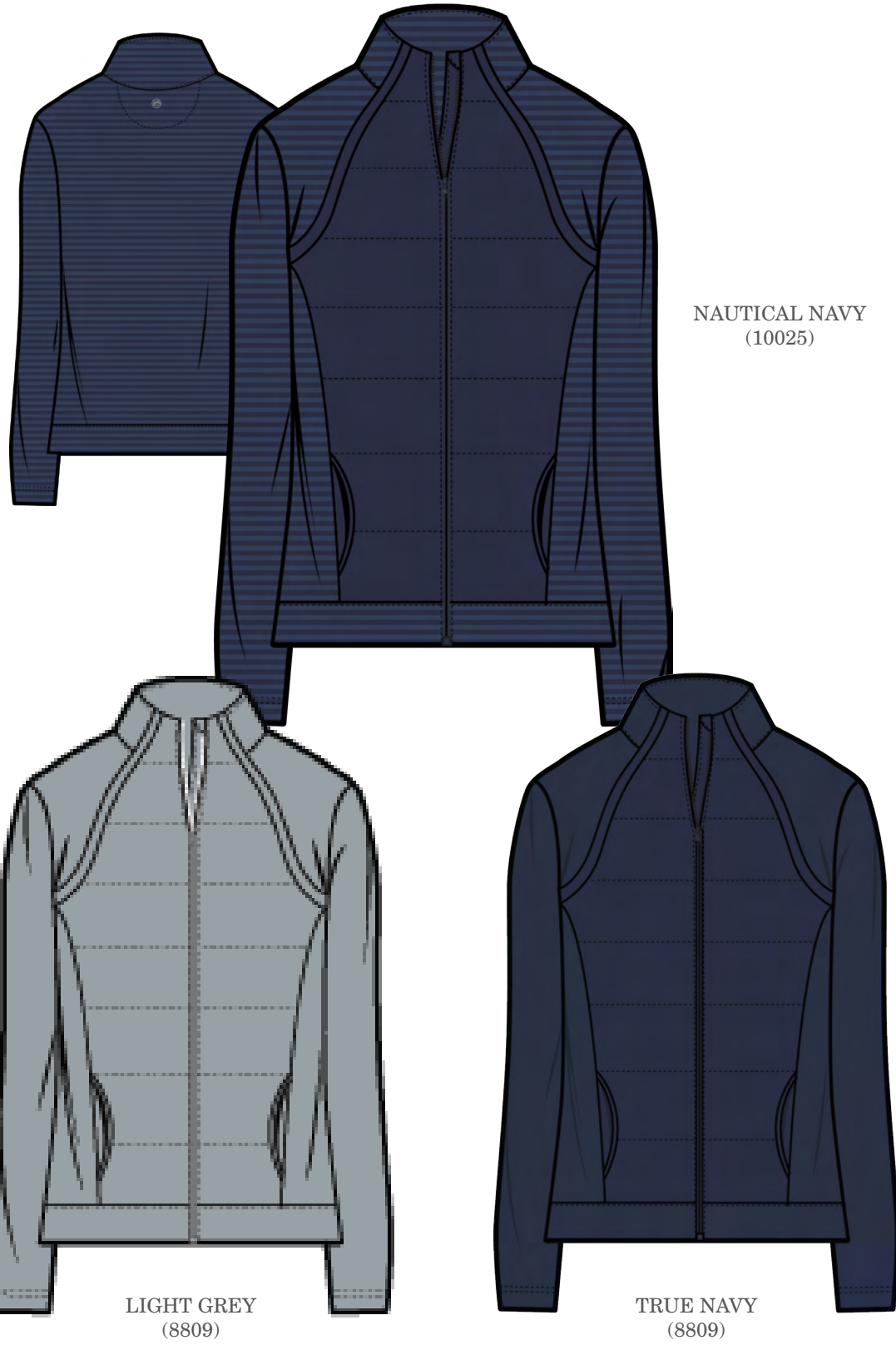


NAUTICAL NAVY
(10326)

PLATINUM GREY
(10326)

Josette Mixed Media Full Zip | 12/25  

10025 | 8809 A more substantial active jacket featuring mixed media fabric.
Stretch | Quick dry | Lightly filled quilted woven front | Knit stripe sleeves and back | Full zip | On seam front pockets | ST branded flat matte zipper pull | Reflective Skipjack coin heat transfer at center back neck | 83% Nylon 17% Spandex | Sizes XS-XL | 148006800



Runaround Performance 1/4 Zip | 12/2  

9448 Throw this performance layer on for workouts or coffee runs.
Stretch | Quick dry | Coil zipper pull | Branded zipper extender | Thumbholes in cuffs | Slight hi-lo hem | Reflective Skipjack coin heat transfer at center back neck | 83% Nylon 17% Spandex | Sizes XS-XL | 118005300



Kristy Performance Tank | 12/25 

10000 Sleeveless | ¼ zip | Moisture Wicking | Stretch | UV protection | Invisible zipper front | Reflective Skipjack on CB neck | 91% Nylon 9% Spandex | XS-XL | 88004000

Gwen Pleated Performance Skort | 12/25 

10544 Stretch | Pocket on wearer's left interior short | Gripper elastic at leg opening | Reflective Skipjack on center back | Front pleats | Interior short | Skort length: 14" | 91% Nylon 9% Spandex | XS-XL | Retail \$98.00

Kamryn brrr Intercoastal Gingham Dress | 1/25 

10007 Stretch | Moisture wicking | Breathability | Front slit pockets | Back placket | Cuffed sleeve with snap tab | 91% Nylon 9% Spandex | Sizes XS-XL | 148006800



Kamryn brrr Intercoastal Stripe Dress | 12/25     

9786 Short sleeve | Knee length | Split neck & collar | Quick dry w/ moisture management | Stretch | UV protection | brrr° cooling | Breathable material | Front welt pockets | 91% Nylon 9% Spandex Sizes XS-XL | 148006800



COBALT BLUE

Kristy Performance Dress | 1/25   

9954 ¼ zip | Moisture Wicking | Stretch | UV protection | Patch pockets at side seam | Invisible zipper front | Back neck tape | Reflective heat seal at CB neck | Rib trim collar | Interior short | 4" inseam | Gripper elastic at leg opening | 91% Nylon 9% Spandex | XS-XL | 148006800



CLASSIC WHITE

NAUTICAL NAVY

Lisi Stripe Active Ruffle Tank | 1/25   

10011 Fitted | Sleeveless | Scoop neck | Wicking | Stretch for added mobility | UV protection | Active Skipjack r effective heat transfer on CB neck | Ruffle shoulder straps | Interior bra | Removable cups | 91% Nylon 9% Spandex | XS-XL | 78003500

Aveiro Performance Skort | 1/25   

10099 Wicking | Stretch | UV protection | Power mesh in waistbands | Side slit in skirt | Reflective Skipjack heatseal at CB waistband | Interior short | 3 1/2" Inseam | Gripper elastic at leg opening | Pocket on wearer's left interior short | 91% Nylon 9% Spandex | XS-XL | 88004000

Nonie Athletic Short | 1/25   

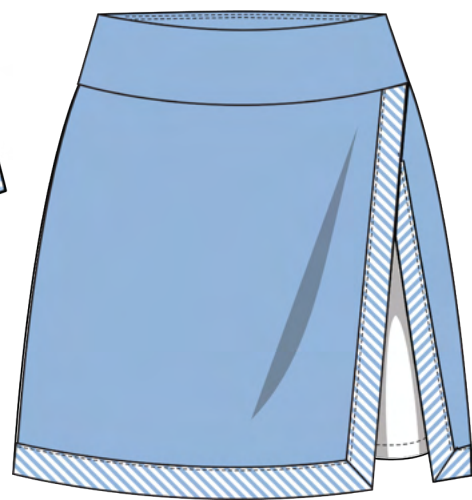
9162 Wicking | Stretch for added mobility | UV protection | Breathable fabric | Reflective Skipjack heat seal on CB waistband | Knit under short | 4" inseam | Gripper elastic in knit under short | Pocket on wearer's right interior short | Contrast waistband | 86% Polyester 14% Spandex | XS-XL | 88004000



SKY BLUE
(10011)



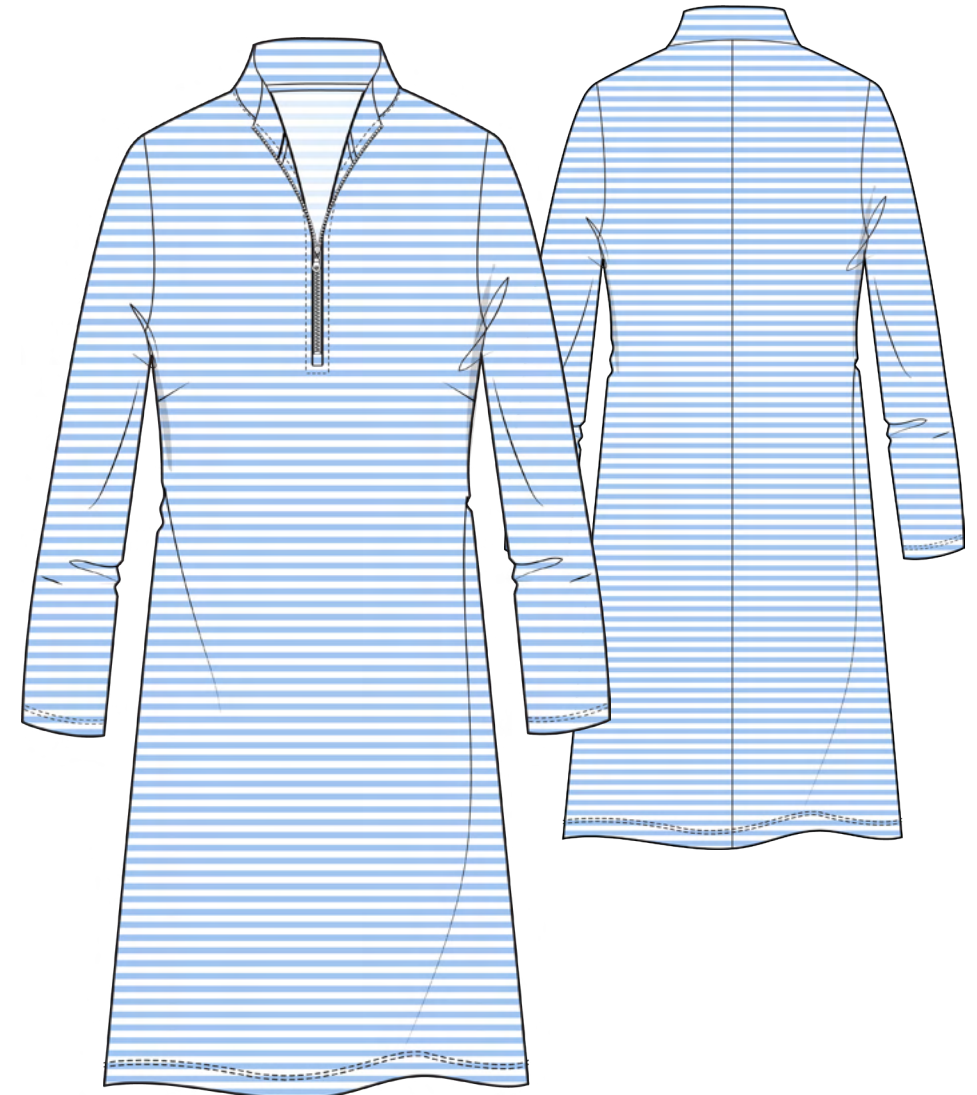
SKY BLUE
(9162)



SKY BLUE
(10099)

Adie Performance Dress | 1/25   

10449 Stretch | Moisture wicking | UPF protection | 1/4 zip front | Mock neck | 3/4 length sleeve | Branded zipper pull | Contrast color zipper | Bust & back darts for shape | 91% Nylon 9% Spandex | XS-XL | 148006800



SKY BLUE

Lisi Stripe Ruffle Tank | 1/25   

10011 Fitted | Sleeveless | Scoop neck | Wicking | Stretch for added mobility | UV protection | Active Skipjack reflective heat transfer on CB neck | Ruffle shoulder straps | Interior bra | Removable cups | 91% Nylon 9% Spandex | XS-XL | 78003500

Cora brrr'illiant Tie Back Tank | 1/25     

10010 Relaxed fit | Sleeveless | Crew | Quick dry w/moisture management | Stretch | UV protection | brrr° cooling | Cut out back | Wear straight or tied in back | 46% brrr° Polyester 46% Polyester 8% Spandex | XS-XL | 78003500

Aveiro Skip Stripe Performance Skort | 1/25   

9836 3 1/2" Inseam | Quick dry w/moisture management | Stretch | UV protection | Pocket on wearer's left interior short | Gripper elastic at leg opening | Power mesh in waistbands | Side slit in skirt | Reflective Skipjack heatseal at CB waistband | Interior short | 91% Nylon 9% Spandex | XS-XL | 88004000



NAUTICAL NAVY
(10011)



NAUTICAL NAVY
(10010)



NAUTICAL NAVY
(9836)

Heather Tara 1/4 Zip | 1/25

10059 Classic white ground with heather navy stripe | Long sleeve | 1/4 zip | Stretch | Side seam pockets | Herringbone tape at interior back neck and side vents | CF zipper | 57% Cotton 38% Polyester 5% Spandex | XS-XL | 118005300

Cora brrr'illiant Tie Back Tank | 1/25     

10010 Relaxed fit | Sleeveless | Crew | Quick dry w/moisture management | Stretch | UV protection | brrr° cooling | Cut out back | Wear straight or tied in back | 46% brrr° Polyester 46% Polyester 8% Spandex | XS-XL | 78003500



CLASSIC WHITE
(10059)



PLATINUM GREY
(10010)

Calie Popover | 2/25  

9838 Quick dry | UV protection | Welt hand pockets | Plastic snaps on CF placket | Non roll elastic cuffs | Adjustable bungee cord hem | Active Skipjack reflective heat transfer on CB neck | Hooded | Locker loop at interior back neck | 92% Nylon 8% Spandex | XS-XL | 138006200

Kyle Skort | 2/25   

9855 3 1/2" inseam | Quick dry w/moisture management | Stretch | UV protection | Breathable fabric | Side seam pockets | Back right welt pocket | Non roll elastic waistband | Gripper elastic at leg opening | Active Skipjack reflective heat transfer on wearer's left hem | Grossgrain drawcord with branded metal ends | Interior short | 86% Polyester 14% Spandex | XS-XL | 88004000

Katlyn Skort | 4/25   

10223 Stretch | UV protection | Gripper elastic at leg opening | Skipjack reflective heat seal on CB waistband | Interior short | Pocket on wearer's left interior short | 14" length | 91% Nylon / 9% Spandex | XS-XL | 98004400

Kyle Skort | 4/25   

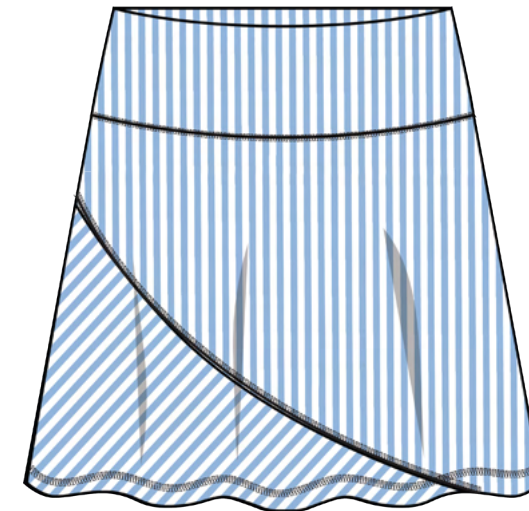
9855 3 1/2" inseam | Quick dry w/moisture management | Stretch | UV protection | Breathable fabric | Side seam pockets | Back right welt pocket | Non roll elastic waistband | Gripper elastic at leg opening | Active Skipjack reflective heat transfer on wearer's left hem | Grossgrain drawcord with branded metal ends | Interior short | Skort length: 15 1/2" | 86% Polyester / 14% Spandex | XS-XL | 88004000



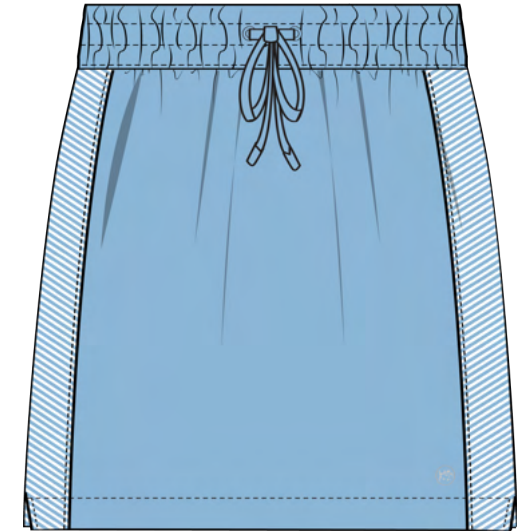
NAUTICAL NAVY
(9838)



NAUTICAL NAVY
(9855)



SKY BLUE
(10223)

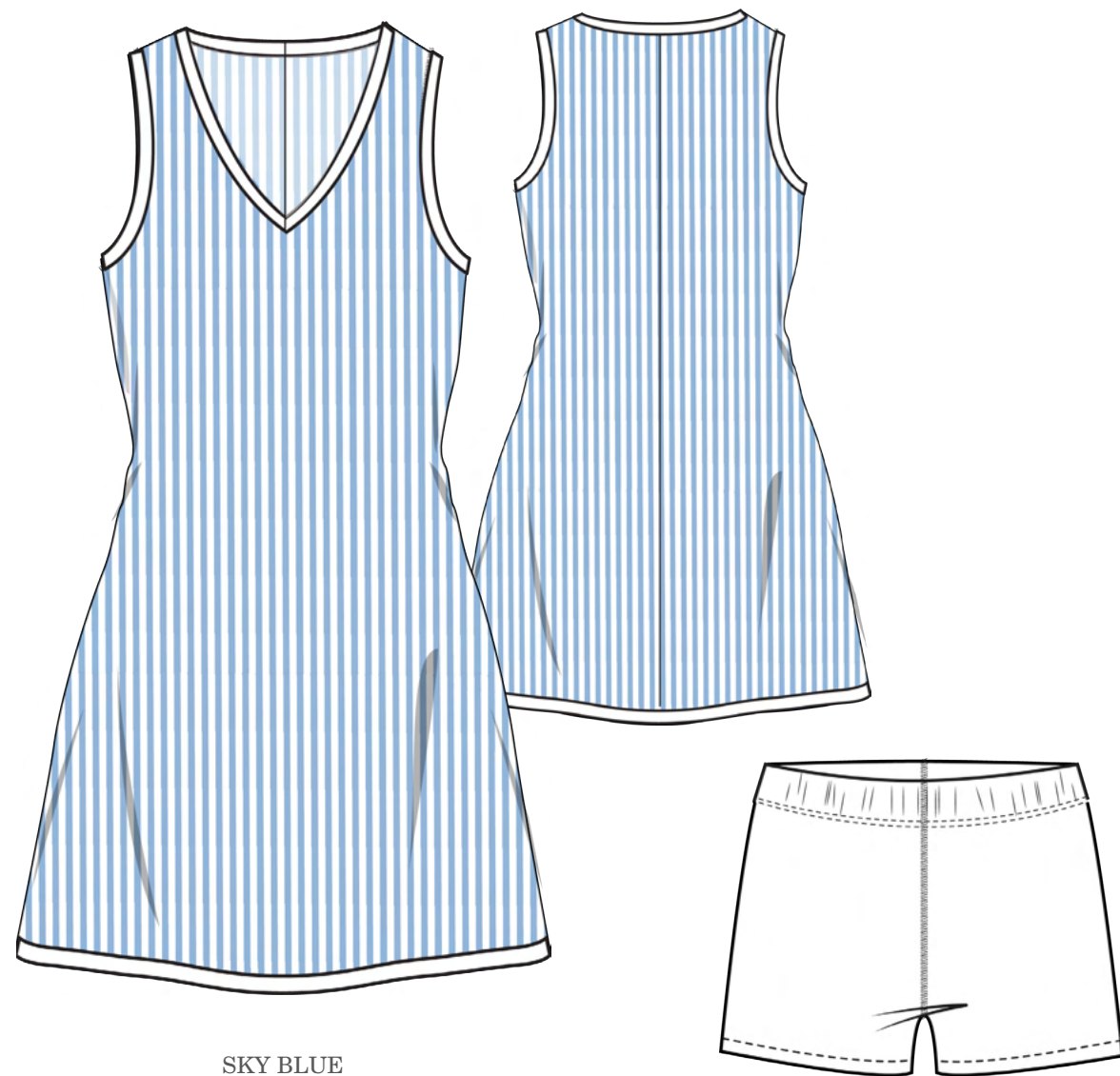


SKY BLUE
(9855)

Georgie Dress | 4/25



10231 32 1/2" length | Stretch | UV protection | Gripper elastic at leg opening | Skipjack reflective heat seal on wearer's front left hem | detached interior short | 91% Nylon / 9% Spandex | XS-XL | 148006800



SKY BLUE

Shawna Vest | 7/25



10056 Quick dry w/moisture management | Rounded hand pockets | Skipjack reflective heat seal on CB neck | CF zipper with ST branded zipper pull | 83% Nylon 17% Spandex | Sizes XS-XL | 148006800



NAUTICAL NAVY

Kelsea Quilted Pullover | 7/25

10330 Branded patch above wearer's left hem | Long sleeve | Light horn buttons | Quarter button closure | On seam pockets | Quilted piecing chest, collar, sleeves | 60% Cotton 40% Polyester | Sizes XS-XL | 138006200



Mellie Mock Neck Pullover | 7/25

10342 Long sleeve | Mock neck | Quick Dry | UV | Sustainable | Herringbone tape detail at back neck | 52% Poly 42% Seawall PET 6% Tencel | Sizes XS-XL | 118005300



Stassi Hoodie | 8/25

10511 Long sleeve | 58% Cotton 39% Polyester 3% Spandex | Sizes XS-XL | 128005700



Gracen Heather Mixed Media Jacket | 9/25

10328 Long sleeve | Full snap placket | Welt pockets | Branded snaps, elastic binding at sleeve opening and hem | Quilted piecing on chest, collar & at pocket openings | 97% Polyester 3% Spandex | Sizes XS-XL | 158007000



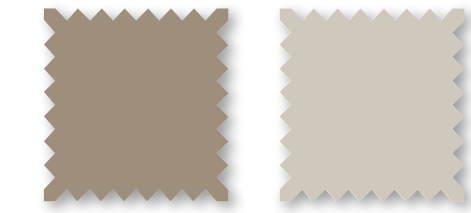
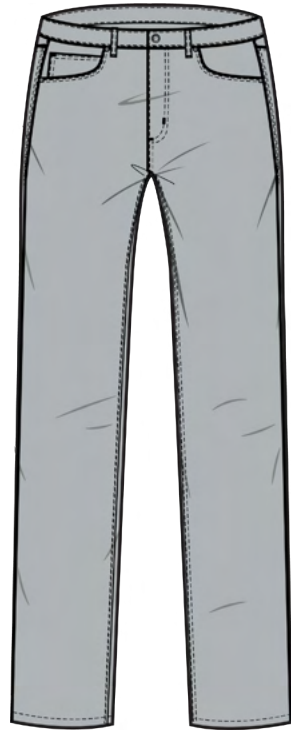
MEN'S

12/25

INTERCOASTAL PANT | 12/25

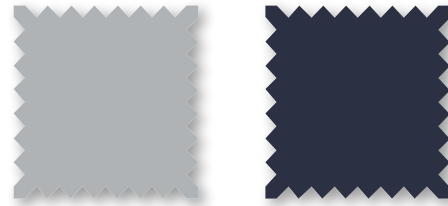


4115 Trim fit | Outline Skipjack embroidery on 5th pocket | Boat rope binding at interior back waistband | Antique nickel metal zipper with Southern Tide shank button | Grey camo pocket bags | Moisture wicking | UV Protection | 97% Nylon / 3% Spandex | Refer to size chart below | 135006075



SANDSTONE KHAKI

STONE



SEAGULL GREY

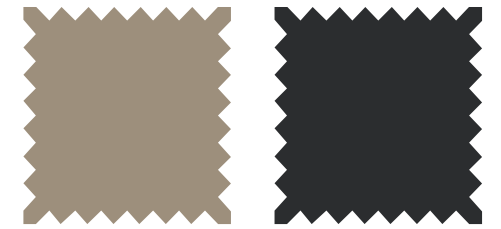
TRUE NAVY

L/W	28	30	31	32	33	34	35	36	37	38	40	42
30												
32												
34												

THE EXCURSION PERFORMANCE JOGGER | 12/25

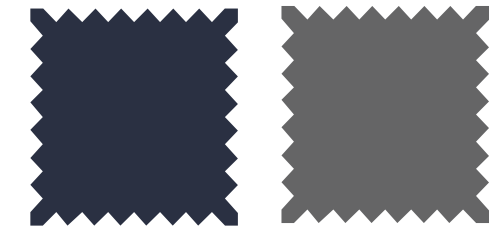


9371 Skipjack reflective heat seal above right back pocket | Slanted hand pockets with performance jersey pocketing | Elastic waistband with two-toned drawcord with branded tip | Self fold over cuffs | Back zippered welt pocket on wearer's right side | Stretch | 86% Polyester / 14% Spandex | Sizes S-XXL | 135006075



SANDSTONE KHAKI

CAVIAR BLACK (7/25 DELIVERY)



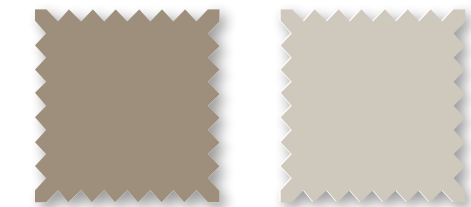
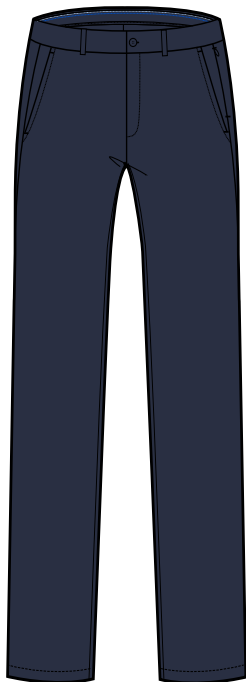
TRUE NAVY

SMOKED PEARL

JACK PERFORMANCE PANT | 12/25

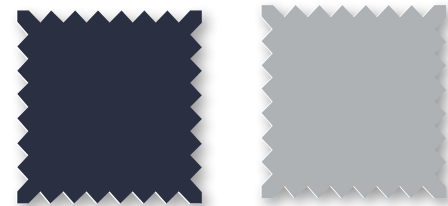


8125 Classic fit | Outline Skipjack embroidery | Set-on waistband | 2-tone blue stitching on interior waistband | Knit pocket bags | Slanted hand pockets | Snap welt back pockets | Hidden on seam zipper pocket | Button and zipper fly with metal pull | Matte branded button | UV Protection | 100% Polyester | Refer to size chart below | 135006075



SANDSTONE KHAKI

PUTTY



TRUE NAVY

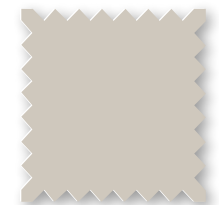
STEEL GREY

L/W	28	30	31	32	33	34	35	36	37	38	40	42
30												
32												
34												

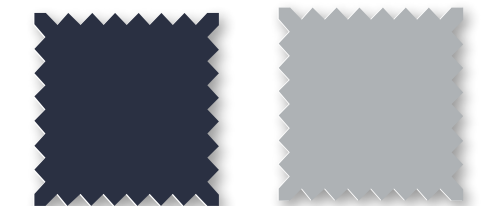
T3 GULF SHORT | 12/25



4744 9" inseam | Outline Skipjack embroidery above right hand back pocket | T3 heat transfer main label at back interior waistband | Coil zipper with rubber coated Skipjack button closure | Mesh pocketing | One button closure back pocket on left, other is open 2" self-fabric on bottom of front pocket for extra security | 4-way stretch | 56% Cotton / 36% Polyester / 8% Spandex | See size chart below | 89504000



STONE



TRUE NAVY

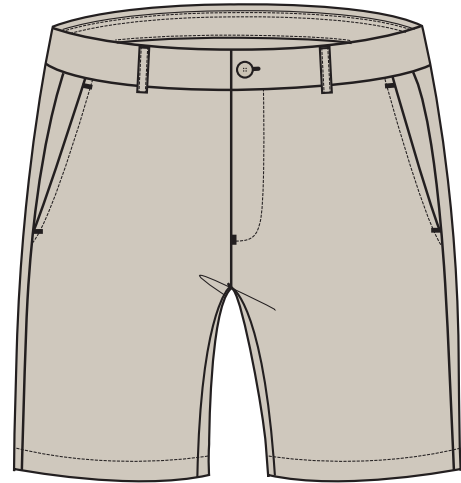
SEAGULL GREY

L/W	28	30	31	32	33	34	35	36	37	38	40	42
9"												

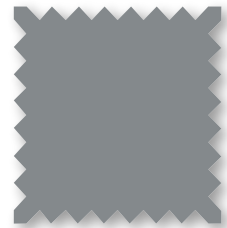
BRRR-DIE GULF SHORT | 12/25



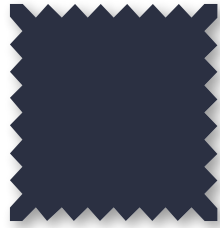
7769 8" inseam | Outline Skipjack embroidery | Logo elastic interior waistband | Center front button and zipper fly | Rubber branded buttons | Rubber auto-lock pull | Set-on waistband | Slanted hand pockets | Wearer's left button welt back pocket | Wearer's right open welt back pocket | brrr° cooling | Moisture wicking | 4-way stretch | UV Protection | 85% brrr° Nylon / 15% Spandex | Refer to size chart below | 99504400



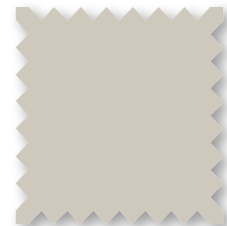
L/W	28	30	31	32	33	34	35	36	37	38	40	42
8"												



SEAGULL GREY



TRUE NAVY



STONE



BOAT BLUE

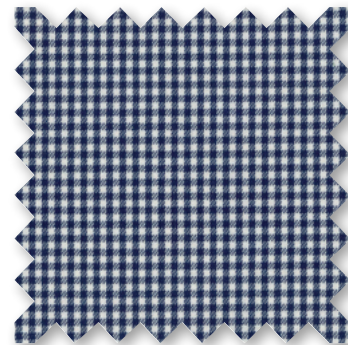
INTERCOASTAL SPORT SHIRTS | 12/25



Sizes S-XXL (*3X noted) | Outline Skipjack embroidery on pocket | Button down collar | Sleeve placket with 2-button adjustable cuff | Eyelets under arm | Moisture wicking | UV Protection | Anti-Microbial | Stretch

MICRO-GINGHAM

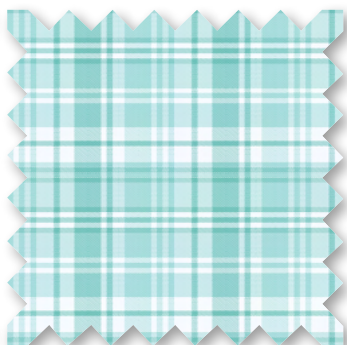
5348 CLASSIC
91% Nylon/9% Spandex |
Tonal Skipjack embroidery
135006075



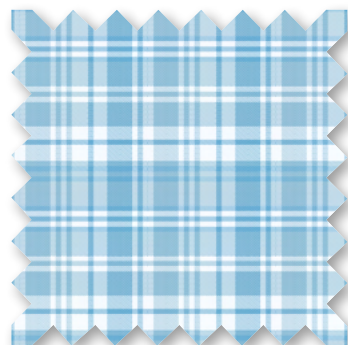
TRUE NAVY

PALM CANYON PLAID

9648 CLASSIC
Outline embroidery | 91% Nylon / 9% Spandex
135006075



BALTIC TEAL



RAIN WATER

INTERCOASTAL SPORT SHIRTS | 12/25



Sizes S-XXL (*3X noted)



BRRR° SOLID INTERCOASTAL

8546 CLASSIC
91% Nylon / 9% Spandex
(with brrr° technology) |
145006525

BRRR° BENGAL STRIPE

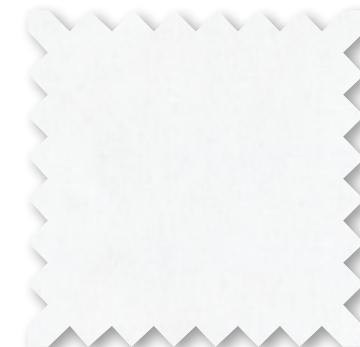
7861 CLASSIC
Outline Skipjack
embroidery | 91% Nylon
9% Spandex (with brrr°
technology) | 145006525

BRRR° BOWRY

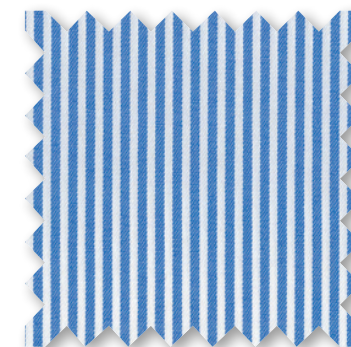
7858 CLASSIC
Outline Skipjack
embroidery | 91% Nylon /
9% Spandex (w/brrr°
technology) | 145006525

BRRR° CHARLESTON— ROSEMONT TATTERSALL

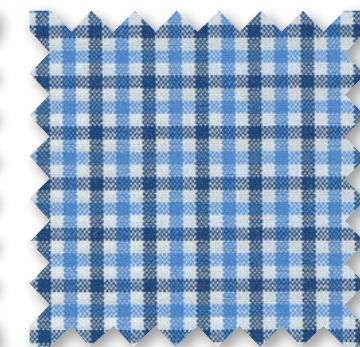
9047 CLASSIC
Chest pocket | 91% Nylon
/ 9% Spandex (with brrr°
technology) | 145006525



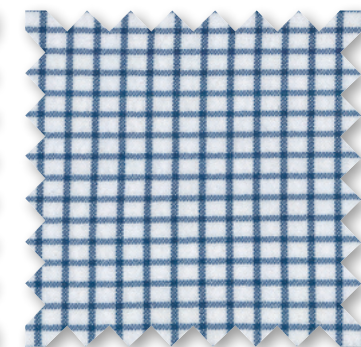
CLASSIC WHITE



COBALT BLUE



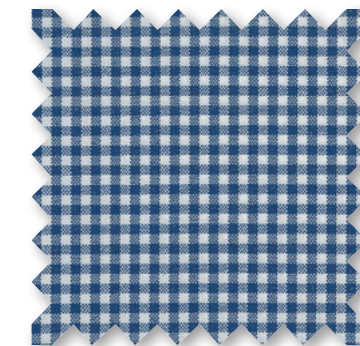
SEVEN SEAS BLUE



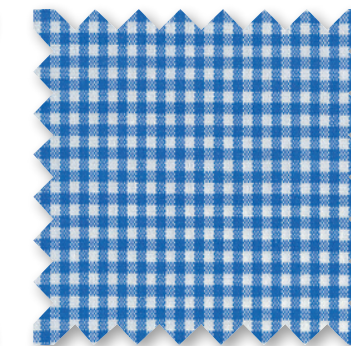
SEVEN SEAS BLUE

BRRR° MICRO-GINGHAM

7857 CLASSIC
Outline Skipjack embroidery | 91% Nylon / 9% Spandex
(with brrr° technology) | 145006525



SEVEN SEAS BLUE



COBALT BLUE

DRIVER MONSTERA PALM PRINT PERF POLO | 12/25



9612 Outline Skipjack heat seal on back neck | Open sleeve | 2-piece self-collar | 3-button placket with branded white buttons | Drop tail hem | UV Protection | Stretch for ease of movement | Jersey | Recycled components | 94% Recycled Polyester / 6% Spandex | Sizes S-XXL | 95004275



CLOUD WHITE



HEAT SEAL INTERIOR
LABEL ON ALL
DRIVER POLOS

DRIVER FISH TOSS PRINT PERF POLO | 12/25



9613 Outline Skipjack heat seal on back neck | Open sleeve | 2-piece self-collar | 3-button placket with branded white buttons | Drop tail hem | UV Protection | Stretch for ease of movement | Jersey | Recycled components | 94% Recycled Polyester / 6% Spandex | Sizes S-XXL | 95004275

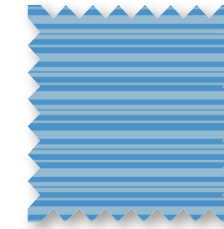


AGED DENIM

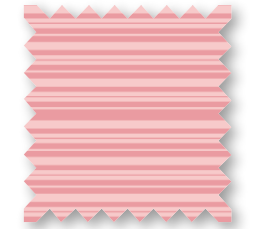
RYDER HEATHER BOMBAY STRIPE POLO | 12/25



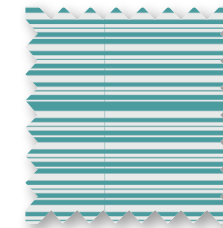
9614 Outline Skipjack heat seal on back neck | Open sleeve | 2-piece self-collar | 3-button placket with branded white buttons | Drop tail hem | Stretch | UV Protection | Moisture wicking | Jersey | 88% Polyester / 12% Spandex | Sizes S-XXL | 95004275



HEATHER BOAT
BLUE



HEATHER
FLAMINGO PINK

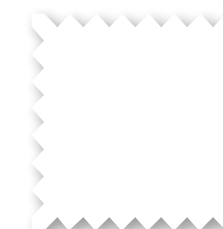


HEATHER TIDAL
WAVE

RYDER PERFORMANCE POLO | 12/25



8082 Outline Skipjack heat seal logo on back neck | Open chest | Open sleeve cuffs | 2-piece self-collar | 3-button placket with branded white buttons | Drop tail | Soft touch | Moisture wicking | 4-way stretch | UV Protection | 88% Polyester / 12% Spandex | Sizes S-XXL | 95004275



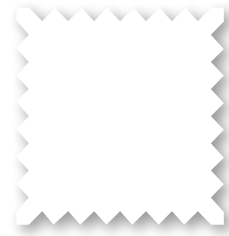
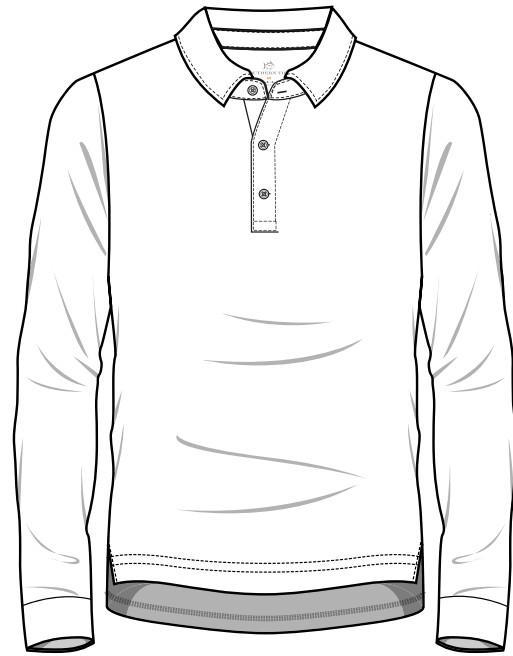
CLASSIC WHITE



TRUE NAVY

RYDER LS PERFORMANCE POLO | 12/25

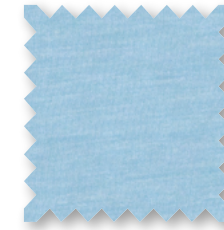
8431 Outline Skipjack heat seal logo on back neck | Self banded cuffs | Self 2-piece collar | 3-button placket with white branded buttons | Drop tail | Stretch | UV Protection | Moisture wicking | Performance Jersey | 88% Polyester / 12% Spandex | Sizes S-XXL | 110004950



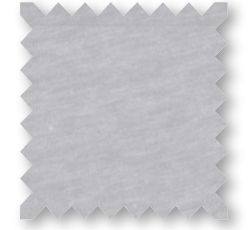
CLASSIC WHITE

CRUISER HEATHER 1/4 ZIP | 12/25

9620 Skipjack Coin on back neck | Open Chest | Self standing collar | Zipper placket with rubber branded pull | Self sleeve cuff and hem band | Suede finish | UV Protection | Moisture wicking | Stretch | 88% Polyester / 12% Spandex | Sizes S-XXL | 120005200



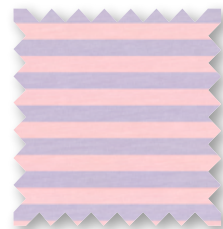
HEATHER
RAIN WATER



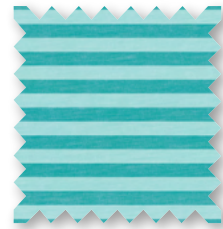
HEATHER
SLATE GREY

CRUISER HEATHER MICRO-STRIPE PERF 1/4 ZIP | 12/25

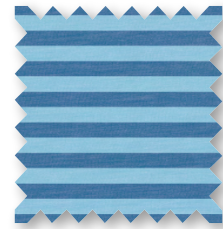
9619 Skipjack Coin on back neck | Open Chest | Self standing collar | Zipper placket with rubber branded pull | Self sleeve cuff and hem band | Suede finish | UV Protection | Moisture wicking | Stretch | 88% Polyester / 12% Spandex | Sizes S-XXL | 120005200



HEATHER
ROSE BLUSH



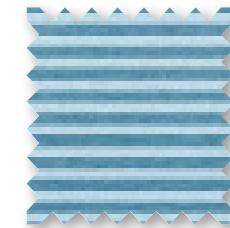
HEATHER
TIDAL WAVE



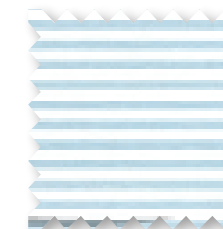
HEATHER
ATLANTIC BLUE

CRUISER HEATHER MICRO-STRIPE PERF 1/4 ZIP | 12/25

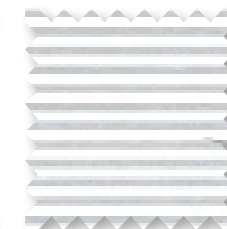
7650 Classic fit | Skipjack coin on back neck | Open chest | T3 striped neck tape | Self standing collar | Zipper placket with rubber branded pull | Self sleeve cuff | Self cuff hem band | Moisture wicking | 4-way stretch | UV Protection | 88% Polyester / 12% Spandex | Sizes S - XXL | 110004950



HEATHER
BLUE SAPPHIRE



HEATHER
AQUAMARINE

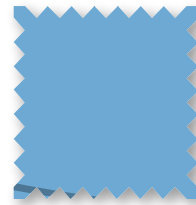


HEATHER
STEEL GREY

CCC FLANKER 1/4 ZIP | 12/25



7834 Rubber Skipjack on center back collar | Custom embroidery on chest | T3 striped neck tape | Self standing collar | Zipper placket with rubber branded pull | Self sleeve cuff | Self cuff hem band | Moisture wicking | UV Protection | 94% Polyester / 6% Spandex | Sizes S – XXL | 120005200



RUSH BLUE



NAVY

ABERCORN CAMO PERFORMANCE VEST | 12/25



9508 Skipjack rubber coin on back neck | Mock Neck With Knit Interior Collar | Two Way Zipper placket with zipper pull and Skipjack circle extender | Welt pockets with zipper closure | Interior sweat patch | Rubber Skipjack on exterior back collar | Quilted front panels | Interior patch pocket on wearer's left side | 100% Polyester | Sizes S-XXL | 138006200



TRUE NAVY

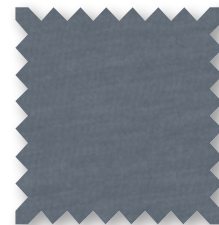
ABERCORN PERFORMANCE VEST | 12/25



8875 Full Rubber Skipjack on back neck | Skipjack circle zipper extender | Solid grosgrain ribbon trim | 2-way reverse coil zipper | matte enamel pull and branded pull extension | Welt pocket at panel seam | 2-piece self-collared | Water resistant | Lamination | 100% Polyester Laminated (Quilt) Woven + Jersey | Sizes S-XXL | 135006075



BLUE RIDGE

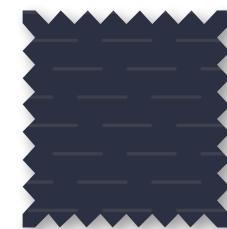


HARBOR MIST

ABERCORN PERFORMANCE JACKET | 12/25



9509 Skipjack rubber coin on back neck | Mock neck | Quilted front panels | Interior patch pocket on wearer's left side | Water resistant | 100% Polyester | Sizes S-XXL | 165007400



TRUE NAVY

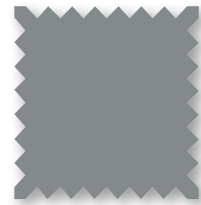
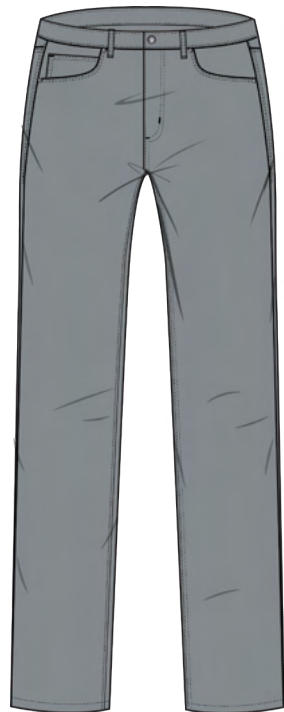
MEN'S

1/25

INTERCOASTAL PANT | 1/25



4115 Trim Fit | Outline Skipjack embroidery on 5th Pocket | Boat Rope Binding at interior back waistband | Antique nickel metal zipper with Southern Tide shank button | Grey camo pocket bags | Moisture Control | Moisture wicking | UV Protection | 97% Nylon / 3% Spandex | Refer to size chart below | 135006075



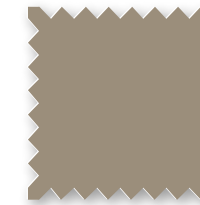
STEEL GREY

L/W	28	30	31	32	33	34	35	36	37	38	40	42
30												
32												
34												

T3 GULF SHORT | 1/25



4744 9" inseam | Outline Skipjack embroidery above right hand back pocket | T3 heat transfer main label at back interior waistband | Coil zipper with rubber coated Skipjack button closure | Mesh pocketing | One button closure back pocket on left, other is open 2" self-fabric on bottom of front pocket for extra security | 4-way stretch | Quick dry | Moisture wicking | 56% Cotton / 36% Polyester / 8% Spandex | See size chart below | 89504000

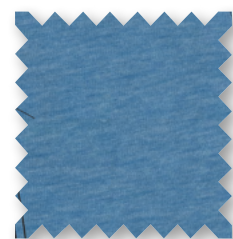


SANDSTONE KHAKI

L/W	28	30	31	32	33	34	35	36	37	38	40	42
9"												

HEATHER T3 GULF SHORT | 1/25

4733 9" inseam | Skipjack embroidery above right hand back pocket | Standard coil zipper with rubber coated Skipjack button closure | Mesh pocketing | One button closure back pocket on the left, right is open | 2" self-fabric on bottom of front pocket for extra security | 4-way stretch | Quick dry | Moisture wicking | 73% Polyester / 19% Cotton / 8% Spandex | Sizes 28,30, 32-36, 38, 40, 42 | 89504000



HEATHER ATLANTIC BLUE



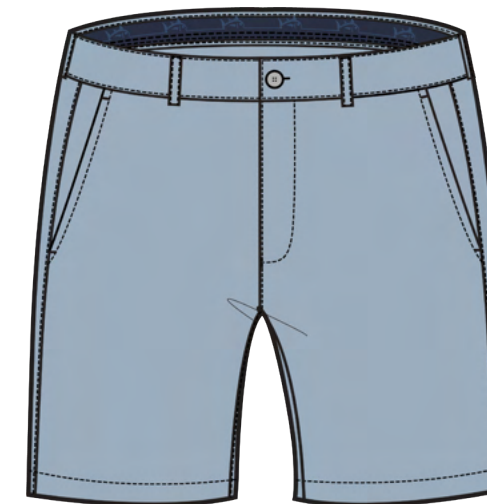
HEATHER TIDAL WAVE

L/W	28	30	31	32	33	34	35	36	37	38	40	42
9"												

BRRR-DIE GULF SHORT | 1/25



7769 8" inseam | Outline Skipjack embroidery above right hand back pocket | Logo elastic interior waistband | Center front button and zipper fly | Rubber branded buttons | Rubber auto-lock pull | Rigid waistband | Slanted hand pockets | Welt back pockets | brrr° cooling | Moisture wicking | UV Protection | 85% brrr° Nylon / 15% Spandex | Sizes 28, 30, 32-36, 38, 40, 42 | 99504000



DARK SEAS



FOG



SANDSTONE KHAKI



STEEL GREY

L/W	28	30	31	32	33	34	35	36	37	38	40	42
8"												

INTERCOASTAL SPORT SHIRTS | 1/25

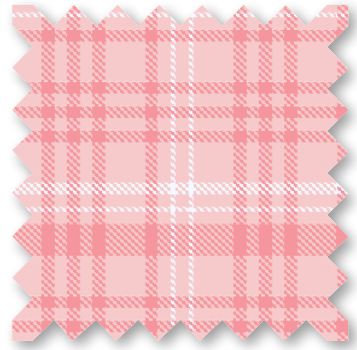


Outline embroidery on chest pocket (unless otherwise noted) | Button down collar | Sleeve placket with adjustable cuff | Eyelets under arm | Stretch | UV protection | Moisture wicking | Anti-microbial | Sizes S-XXL (*3X noted).

KEOWEE PLAID

9840 CLASSIC

91% Nylon / 9% Spandex | 135006075

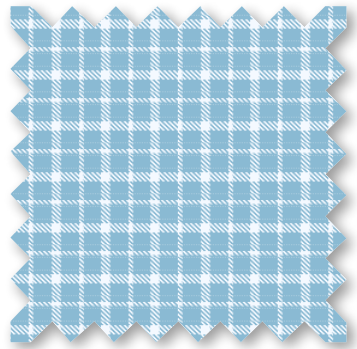


ROSE BLUSH

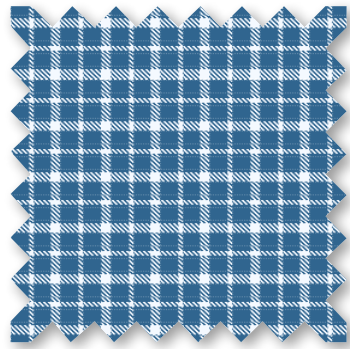
brrr° CHARLESTON BEAUMONT PLAID

9845 CLASSIC

91% brrr° Nylon / 9% Spandex | 145006525



RAIN WATER

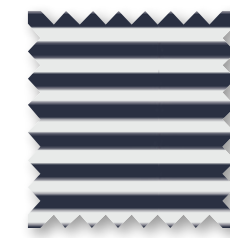


ATLANTIC BLUE

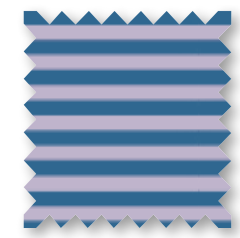
brrr° eeze SHORES STRIPE PERFORMANCE POLO | 1/25



8932 Outline Skipjack heat logo on back neck | 2-piece self-collar | 3-button placket with branded white buttons | Drop tail | Moisture Wicking | UV Protection | Quick Dry | brrr° Cooling | Stretch | 83% brrr° Nylon / 17% Spandex | Sizes S-XXL | 99504400



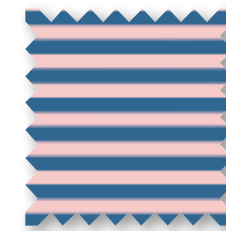
CLOUD WHITE



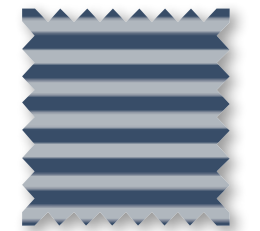
LIGHT PURPLE



RAIN WATER



ROSE BLUSH

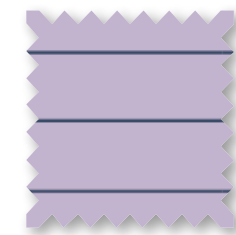


SLATE GREY

RYDER HEATHER MARIN STRIPE PERF POLO | 1/25



9826 Outline Skipjack heat seal on back neck | Open sleeve | 2-piece self-collar | 3-button placket with branded white buttons | Drop tail | Stretch | UV Protection | Moisture Wicking | 88% Polyester / 12% Spandex | Sizes S-XXL | 95004275



HEATHER ORCHID PETAL

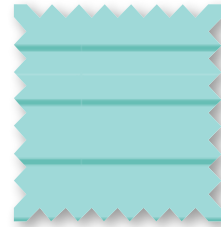
DRIVER BOWEE STRIPE PERFORMANCE POLO | 1/25



9828 Outline Skipjack heat seal on back neck | Open sleeve | 2-piece self-collar | 3-button placket with branded white buttons | Drop tail hem | UV Protection | Stretch | Recycled components | 94% Recycled Polyester / 6% Spandex | Sizes S-XXL | 95004275



ATLANTIC BLUE



BALTIC TEAL

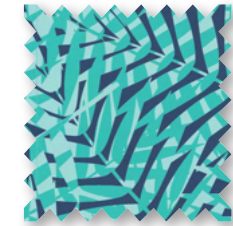


HEAT SEAL INTERIOR LABEL ON ALL DRIVER POLOS

DRIVER VIBIN' PALM PRINT PERFORMANCE POLO | 1/25



9835 Outline Skipjack heat seal on back neck | Open sleeve | 2-piece self-collar | 3-button placket with branded white buttons | Drop tail hem | UV Protection | Stretch | Recycled components | 94% Recycled Polyester / 6% Spandex | Sizes S-XXL | 95004275



ATLANTIC BLUE

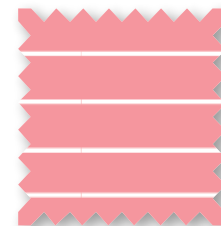
DRIVER MAYFAIR PERFORMANCE POLO | 1/25



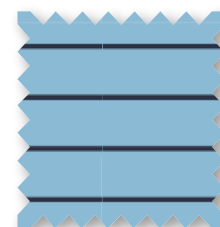
9830 Outline Skipjack heat seal on back neck | Open sleeve | 2-piece self-collar | 3-button placket with branded white buttons | Drop tail hem | UV Protection | Stretch | Recycled components | 94% Recycled Polyester / 6% Spandex | Sizes S-XXL | 95004275



CLASSIC WHITE



FLAMINGO PINK

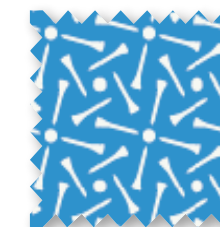
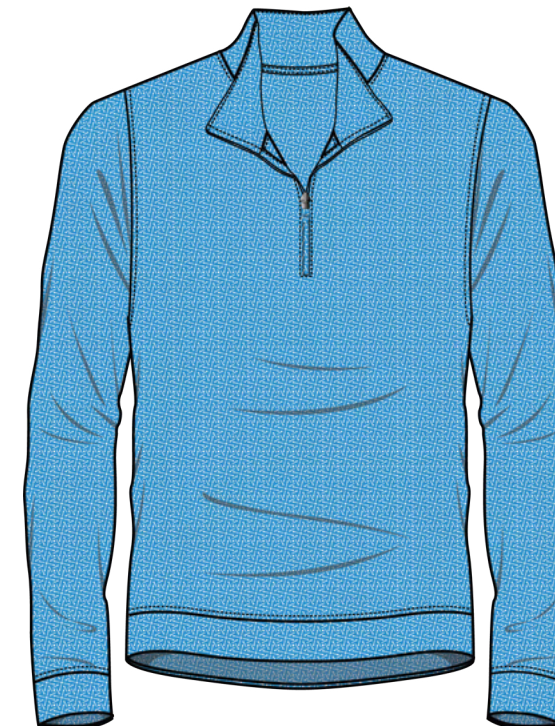


RAIN WATER

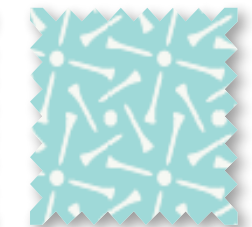
PINE RIDGE PRINT CRUISER 1/4 ZIP | 1/25



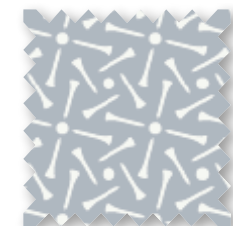
9744 Skipjack coin on back neck | Open chest | Self standing collar | Zipper placket with rubber branded pull | Self sleeve cuff and hem band | Moisture Wicking | Stretch | UV Protection | 88% Polyester / 12% Spandex | Sizes S-XXL | 125005625



ATLANTIC BLUE



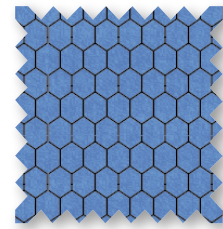
BALTIC TEAL



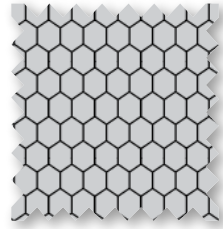
STEEL GREY

SCUTTLE HEATHER HOODIE PERFORMANCE 1/4 ZIP | 1/25

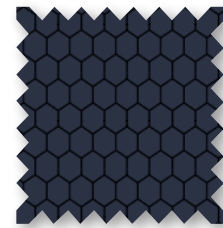
9343 Exterior raised Skipjack clamp label at bottom hem | Hood | Fold over self-cuff | Zipper with branded zipper pull | UV Protection | 93% Polyester / 7% Spandex | Sizes S-XXL | 120005200



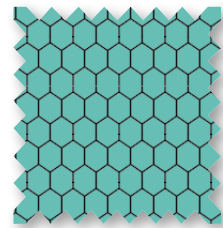
HEATHER
BOAT BLUE



HEATHER
SLATE GREY



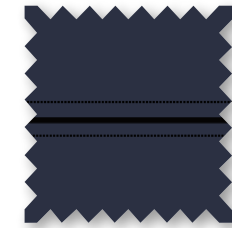
HEATHER
TRUE NAVY



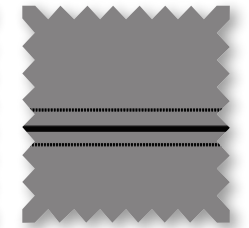
HEATHER
OCEAN TEAL

SHORELINE PERFORMANCE PULLOVER | 1/25

9825 Active Skipjack reflective heat transfer on back neck | Raised reflective Southern Tide wordmark on left side seam | Hand pockets at side seam | Lightweight mesh pocket bags | Hidden contrast color zipper with branded zipper pull | Signature stripe interior neck tape | Recycled Components | 100% Recycled Nylon | Sizes S-XXL | 165007400



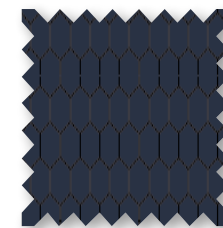
TRUE NAVY



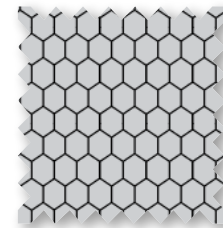
FROST GREY

SCUTTLE HEATHER 1/4 ZIP | 1/25

10057 Exterior raised Skipjack clamp label at bottom hem | Tonal binding at raglan seam | Fold over self-cuff | Zipper with branded zipper pull | UV Protection | 93% Polyester / 7% Spandex | Sizes S-XXL | 120005400



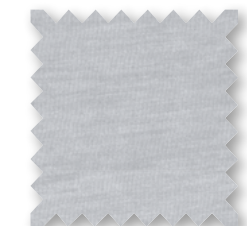
HEATHER
TRUE NAVY



HEATHER
SLATE GREY

ABERCORN PERFORMANCE VEST | 1/25

8875 Full Rubber Skipjack on back neck | Skipjack circle zipper extender | Solid grosgrain ribbon trim | 2-way reverse coil zipper | Matte enamel pull and branded pull extension | Welt pocket at panel seam | 2-piece self-collar | Water resistant | Laminatino | 100% Polyester Laminated (Quilt) Woven + Jersey | Sizes S-XXL | 135006075



GRAVEL GREY

brrr° illiant PERFORMANCE HOODIE | I/25 

9742 Active Skipjack reflective heat transfer on back neck | Raised reflective Southern Tide wordmark on left side seam | Reflective paracord on back neck | Signature stripe interior neck tape | Overlap at front neckline | Self sleeve cuff and hem band | brrr° cooling | Quick dry | Moisture wicking | Stretch | 46% brrr° Polyester / 46% Polyester / 8% Spandex | Sizes XS-XXL | 95004275



brrr° illiant PERFORMANCE LS TEE | I/25 

9738 Active Skipjack reflective heat transfer on back neck | Raised reflective Southern Tide wordmark on left side seam | brrr° cooling | Quick dry | Moisture wicking | Stretch | 46% brrr° Polyester / 46% Polyester / 8% Spandex | Sizes XS-XXL | 88004000



brrr° illiant PERFORMANCE TEE | I/25 

9710 Active Skipjack reflective heat transfer on back neck | Raised reflective Southern Tide wordmark on left side seam | brrr° cooling | Quick dry | Moisture wicking | Stretch | 46% brrr° Polyester / 46% Polyester / 8% Spandex | Sizes XS-XXL | 78003500



MEN'S

2/25

INTERCOASTAL SPORT SHIRTS | 2/25

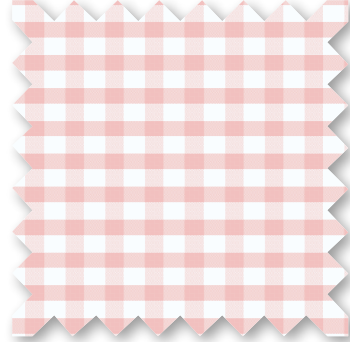


Outline embroidery on chest pocket (unless otherwise noted) | Button down collar | Sleeve placket with adjustable cuff | Eyelets under arm | Stretch | UV protection | Moisture wicking | Anti-microbial
 Sizes S-XXL (*3X noted).

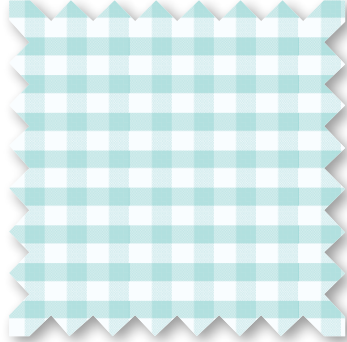
HARTWELL GINGHAM

10556 CLASSIC

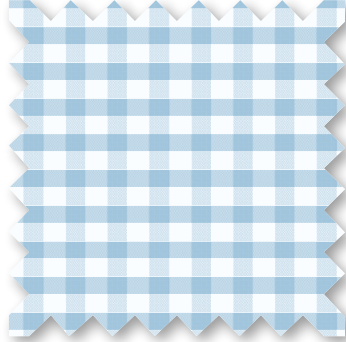
91% Nylon 9% Spandex | 135006075



FLAMINGO PINK



MINT



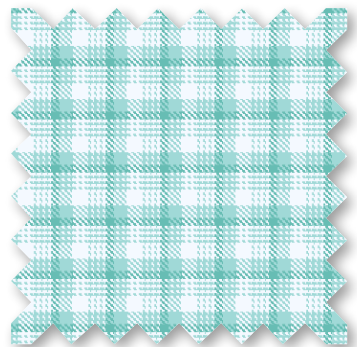
RAIN WATER

brrr° SKYCREST PLAID

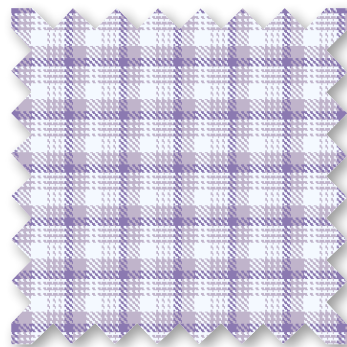


9846 CLASSIC

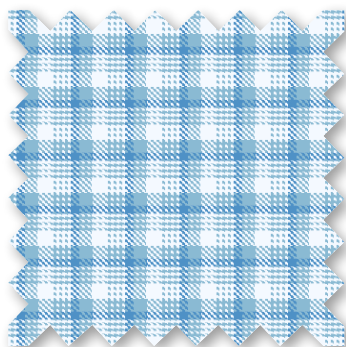
91% brrr° Nylon / 9% Spandex | 145006525



BALTIC TEAL



ORCHID PETAL

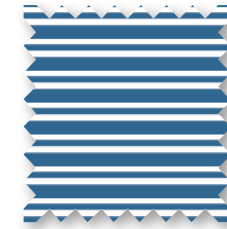
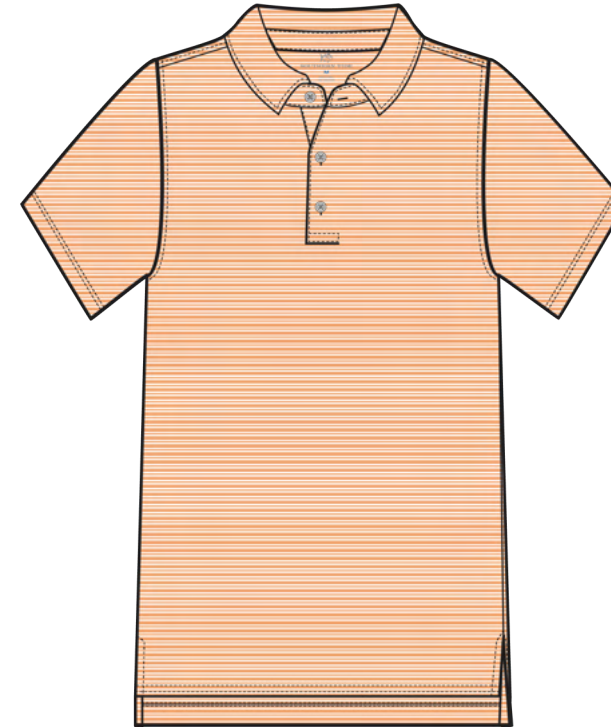


RAIN WATER

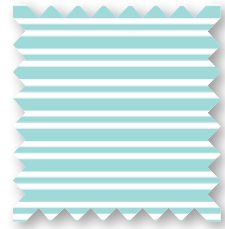
brrr° eeze MILLWOOD STRIPE PERFORMANCE POLO | 2/25



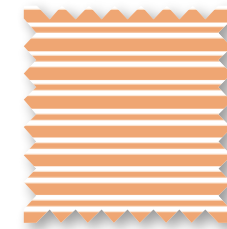
9758 Outline Skipjack heat logo on back neck | 2-piece self-collar | 3-button placket with branded white buttons | Drop tail | Moisture Wicking | UV Protection | Quick Dry | brrr° Cooling | Stretch | 83% brrr° Nylon / 17% Spandex | Sizes S-XXL | 99504400



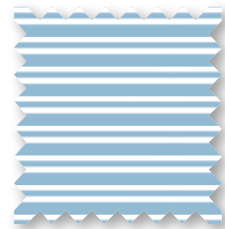
ATLANTIC BLUE



BALTIC TEAL



HORIZON

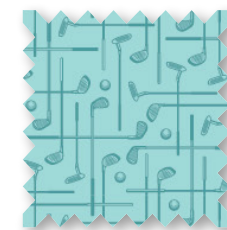


RAIN WATER

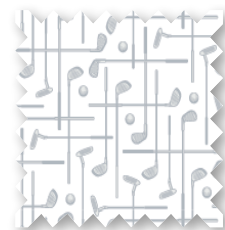
DRIVER OVER CLUBBING PRINT PERFORMANCE POLO | 2/25



9850 Outline Skipjack heat seal on back neck | Open sleeve | 2-piece self-collar | 3-button placket with branded white buttons | Drop tail hem | UV Protection | Stretch | Quick dry | Recycled components | 94% Recycled Polyester / 6% Spandex | Sizes S-XXL | 95004275



BALTIC TEAL



CLASSIC WHITE

DRIVER NICE TO SEA YOU PERFORMANCE POLO | 2/25    

9851 Outline Skipjack heat seal on back neck | Open sleeve | 2-piece self-collar | 3-button placket with branded white buttons | Drop tail hem | UV Protection | Stretch | Quick dry | Recycled components | 94% Recycled Polyester / 6% Spandex | Sizes S-XXL | 95004275



CLASSIC WHITE

DRIVER MARG MADNESS PRINT PERF POLO | 2/25    

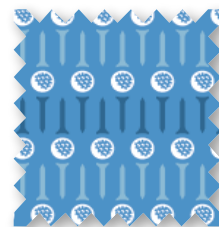
9853 Outline Skipjack heat seal on back neck | Open sleeve | 2-piece self-collar | 3-button placket with branded white buttons | Drop tail hem | UV Protection | Stretch | Quick dry | Recycled components | 94% Recycled Polyester / 6% Spandex | Sizes S-XXL | 95004275



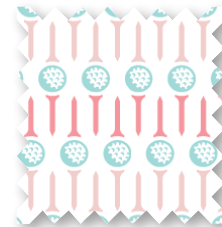
ATLANTIC BLUE

DRIVER BEST BALL PRINT PERFORMANCE POLO | 2/25    

9852 Outline Skipjack heat seal on back neck | Open sleeve | 2-piece self-collar | 3-button placket with branded white buttons | Drop tail hem | UV Protection | Stretch | Quick dry | Recycled components | 94% Recycled Polyester / 6% Spandex | Sizes S-XXL | 95004275



BOAT BLUE



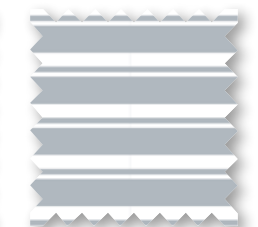
CLASSIC WHITE

DRIVER ALTON STRIPE PERFORMANCE POLO | 2/25    

9856 Outline Skipjack heat seal on back neck | Open sleeve | 2-piece self-collar | 3-button placket with branded white buttons | Drop tail hem | UV Protection | Stretch | Quick dry | Recycled components | 94% Recycled Polyester / 6% Spandex | Sizes S-XXL | 95004275



BOAT BLUE



SLATE GREY

DRIVER BRANTLEY STRIPE PERFORMANCE POLO | 2/25 

9857 Outline Skipjack heat seal on back neck | Open sleeve | 2-piece self-collar | 3-button placket with branded white buttons | Drop tail hem | UV Protection | Stretch | Quick dry | Recycled components | 94% Recycled Polyester / 6% Spandex | Sizes S-XXL | 95004275



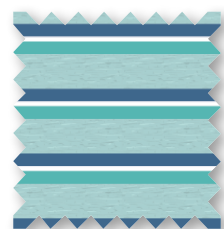
BOAT BLUE



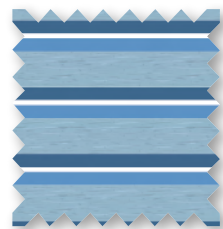
SLATE GREY

RYDER HTR KENDICK PERFORMANCE POLO | 2/25 

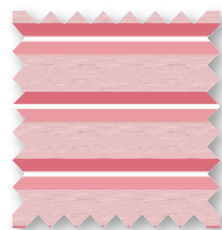
9859 Outline Skipjack heat seal on back neck | Open sleeve | 2-piece self-collar | 3-button placket with branded white buttons | Drop tail | Stretch | UV Protection | 88% Polyester / 12% Spandex | Sizes S-XXL | 95004275



HEATHER
BALTIC TEAL



HEATHER
RAIN WATER



HEATHER
ROSE BLUSH

MEN'S

3/25

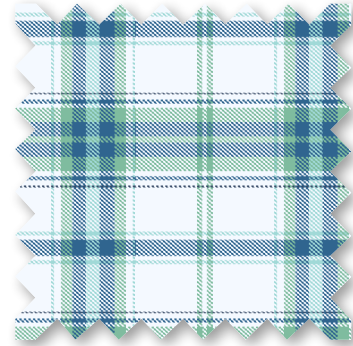
INTERCOASTAL SPORT SHIRTS | 3/25

Outline embroidery on chest pocket (unless otherwise noted) | Button down collar | Sleeve placket with adjustable cuff | Eyelets under arm | Stretch | UV protection | Moisture wicking | Anti-microbial
 Sizes S-XXL (*3X noted).

SAPELO PLAID

9841 CLASSIC

91% Nylon / 9% Spandex | 135006075

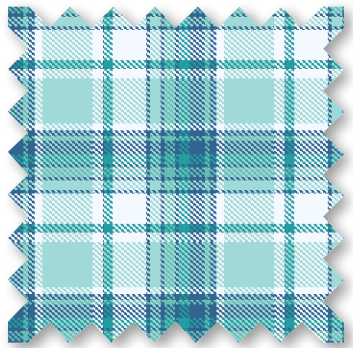


NEPTUNE GREEN

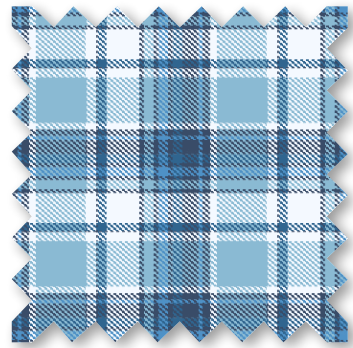
brrr° TIDEPOINTE PLAID

9847 CLASSIC

91% brrr° Nylon / 9% Spandex | 145006525



BALTIC TEAL



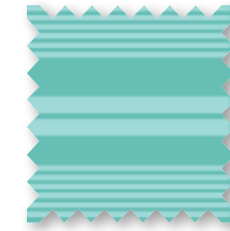
RAIN WATER

brrr° eeze BOWEN STRIPE PERFORMANCE POLO | 3/25

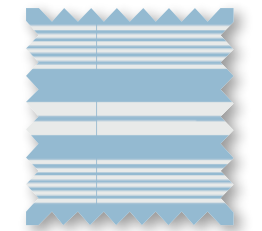
9754 Outline Skipjack heat logo on back neck | 2-piece self-collar | 3-button placket with branded white buttons | Drop tail | Moisture Wicking | UV Protection | Quick Dry | brrr° Cooling | Stretch | 83% brrr° Nylon / 17% Spandex | Sizes S-XXL | 99504400



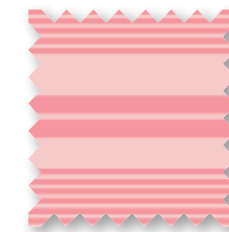
AGED DENIM



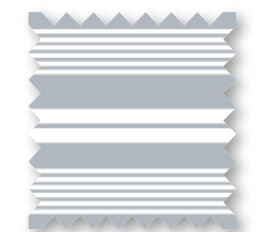
MINT



RAIN WATER



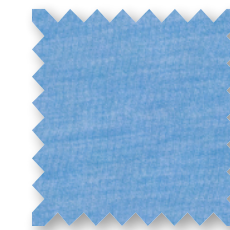
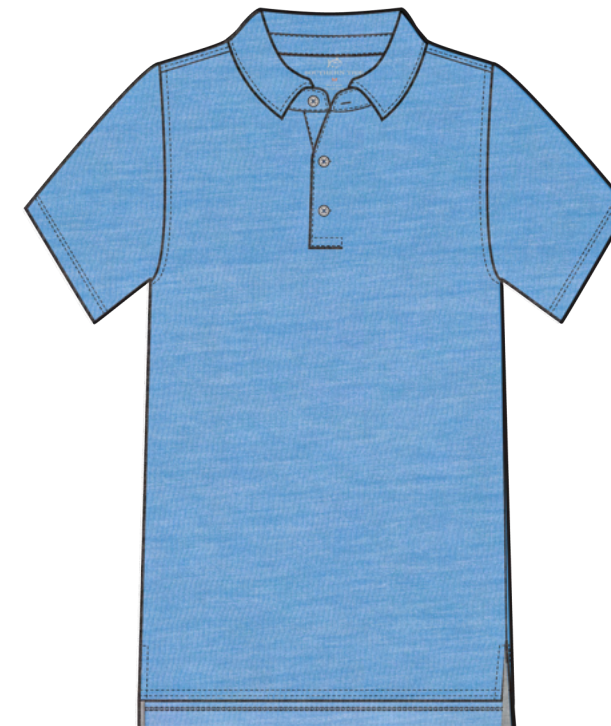
ROSE BLUSH



SLATE GREY

brrr° eeze HEATHER PERFORMANCE POLO | 3/25

10348 Outline Skipjack heat logo on back neck | 2-piece self-collar | 3-button placket with branded white buttons | Drop tail | Moisture Wicking | UV Protection | Quick Dry | brrr° Cooling | Stretch | 48% Polyester / 45% brrr° Nylon / 7% Spandex | Sizes S-XXL | 99504400



HEATHER OCEAN CHANNEL



HEATHER TIDAL WAVE



HEATHER NAUTICAL NAVY



HEATHER STEEL GREY

DRIVER SUNDAY SHELLIES PERFORMANCE POLO | 3/25    

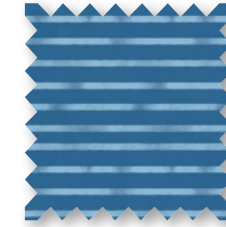
9863 Outline Skipjack heat seal on back neck | Open sleeve | 2-piece self-collar | 3-button placket with branded white buttons | Drop tail hem | UV Protection | Stretch | Quick dry | Recycled components | 94% Recycled Polyester / 6% Spandex | Sizes S-XXL | 95004275



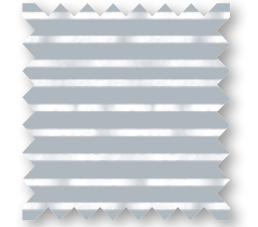
CLASSIC WHITE

DRIVER WYMBERLY STRIPE PERFORMANCE POLO | 3/25    

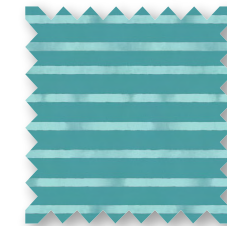
9917 Outline Skipjack heat seal on back neck | Open sleeve | 2-piece self-collar | 3-button placket with branded white buttons | Drop tail hem | UV Protection | Stretch | Quick dry | Recycled components | 94% Recycled Polyester / 6% Spandex | Sizes S-XXL | 95004275



ATLANTIC BLUE



SLATE GREY



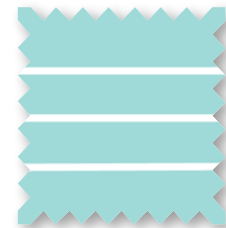
TIDAL WAVE

DRIVER BAY BRIDGE STRIPE PERFORMANCE POLO | 3/25    

9918 Outline Skipjack heat seal on back neck | Open sleeve | 2-piece self-collar | 3-button placket with branded white buttons | Drop tail hem | UV Protection | Stretch | Quick dry | Recycled components | 94% Recycled Polyester / 6% Spandex | Sizes S-XXL | 95004275



ATLANTIC BLUE



BALTIC TEAL

MEN'S

4/25

BRRR°-DIE GULF SHORT | 4/25



7769 8" inseam | Outline Skipjack embroidery | Logo elastic interior waistband | Center front button and zipper fly | Rubber branded buttons | Rubber auto-lock pull | Set-on waistband | Slanted hand pockets | Wearer's left button welt back pocket | Wearer's right open welt back pocket | brrr° cooling | Moisture wicking | 4-way stretch | UV Protection | 85% brrr° Nylon / 15% Spandex | Refer to size chart below | 99504400



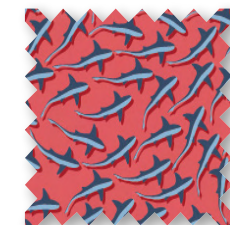
MINERAL RED

L/W	28	30	31	32	33	34	35	36	37	38	40	42
8"												

DRIVER STAY IN SCHOOLS PRINTED PERF POLO | 4/25



10130 Outline Skipjack heat seal on back neck | Open sleeve | 2-piece self-collar | 3-button placket with branded white buttons | Drop tail hem | UV Protection | Stretch for ease of movement | Jersey | Recycled components | 94% Recycled Polyester / 6% Spandex | Sizes S-XXL | 95004275



ROSEWOOD RED

DRIVER WILLWOOD STRIPE PERF POLO | 4/25



10094 Outline Skipjack heat seal on back neck | Open sleeve | 2-piece self-collar | 3-button placket with branded white buttons | Drop tail hem | UV Protection | Stretch for ease of movement | Jersey | Recycled components | 94% Recycled Polyester / 6% Spandex | Sizes S-XXL | 95004275



BOAT BLUE



CLASSIC WHITE



ROSEWOOD RED

DRIVER BACKYARD BBQ PRINTED PERF POLO | 4/25



10131 Outline Skipjack heat seal on back neck | Open sleeve | 2-piece self-collar | 3-button placket with branded white buttons | Drop tail hem | UV Protection | Stretch for ease of movement | Jersey | Recycled components | 94% Recycled Polyester / 6% Spandex | Sizes S-XXL | 95004275

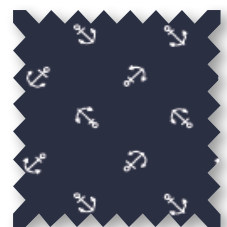


CLASSIC WHITE

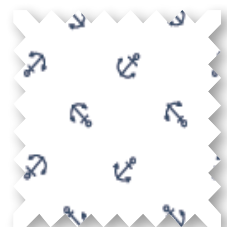
RYDER ANCHOR GEO PRINTED PERF POLO | 4/25



10129 Outline Skipjack heat seal on back neck | Open sleeve | 2-piece self-collar | 3-button placket with branded white buttons | Drop tail hem | Stretch | UV Protection | Moisture wicking | Jersey | 88% Polyester / 12% Spandex | Sizes S-XXL | 95004275



TRUE NAVY

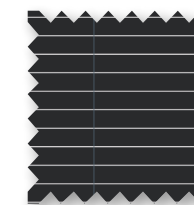


CLASSIC WHITE

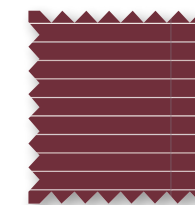
brrr° eeze DESMOND STRIPE PERFORMANCE POLO | 4/25



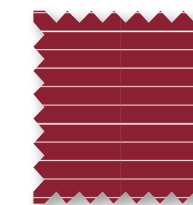
10055 Moisture wicking | UV protection | Quick dry | brrr° cooling | Stretch for ease of movement | Outline Skipjack heat logo on back neck | 2-piece self-collar | 3-button placket with branded white buttons | Drop tail | 83% brrr° Nylon 17% Spandex | S-XXL | Retail \$99.50, Decorated \$105.00



BLACK



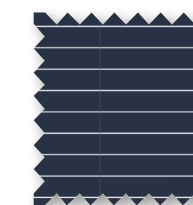
CHIANTI



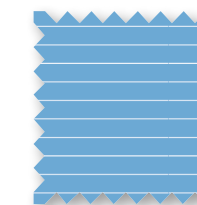
CRIMSON



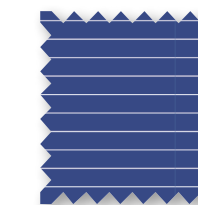
ENDZONE ORANGE



NAVY



RUSH BLUE

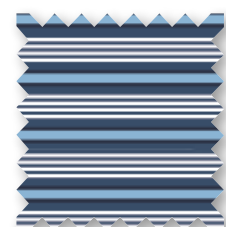


UNIVERSITY BLUE

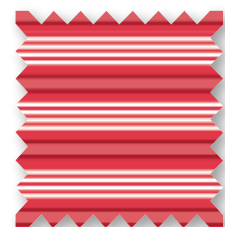
brrr° EEZE CRAWFORD STRIPE PERFORMANCE POLO | 4/25



10093 Outline Skipjack heat seal logo on back neck | 2-piece self-collar | 3-button placket | Moisture wicking | brrr° cooling | UV Protection | Stretch | Quick dry | 83% brrr° Nylon / 17% Spandex | Sizes S-XXL | 99504400



AGED DENIM



FIRE

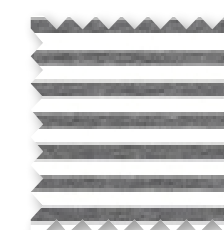


SLATE GREY

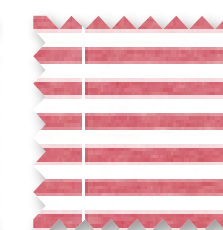
CCC HEATHER CRUISER MICRO-STRIPE 1/4 ZIP | 4/25



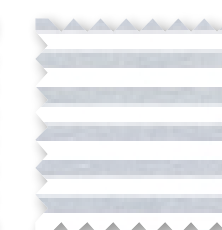
10051 Moisture wicking | 4-way stretch | UV protection | Skipjack coin on back neck | Open chest | Self standing collar | Zipper placket with rubber branded pull | Self sleeve cuff | Self cuff hem band | 88% Polyester 12% Spandex | S-XXL | Retail \$120, Decorated \$130.00



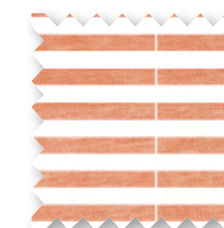
HTR BLAC K



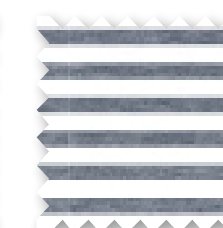
HTR VARSITY RED



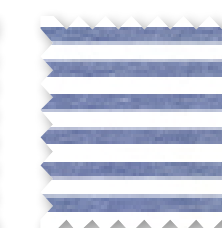
HTR SLATE GREY



HTR ENDZONE ORANGE



HTR NAVY



HTR UNIVERSITY BLUE

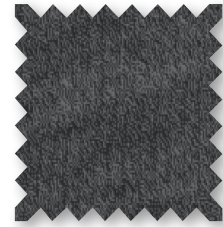
BAYBROOK HEATHER VEST | 4/25



10058 Skipjack coin on back neck | Two-way zip | Zipper placket with branded zipper pull | Welt pockets with zipper closure | 100% Polyester | S-XXL | Retail \$138.00, Decorated \$148.00



HEATHER
NAVY



HEATHER
BLACK

ABERCORN CAMO PERFORMANCE VEST | 4/25



9508 Skipjack rubber coin on back neck | Mock Neck With Knit Interior Collar | Two Way Zipper placket with zipper pull and Skipjack circle extender | Welt pockets with zipper closure | Interior sweat patch | Rubber Skipjack on exterior back collar | Quilted front panels | Interior patch pocket on wearer's left side | 100% Polyester | Sizes S-XXL | Retail \$138.00



GRAVEL GREY

MEN'S

5/25

INTERCOASTAL SPORT SHIRTS

Sizes S-XXL (*3X noted)

5/25



CHARLESTON



SEAGLADE PLAID

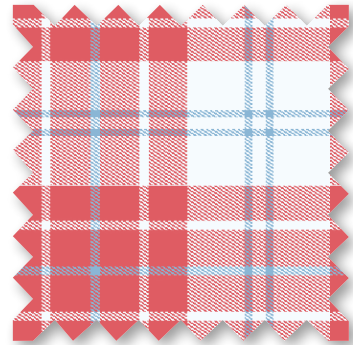
10104 CLASSIC

Outline Skipjack Embroidery
91% Nylon / 9% Spandex
135006075

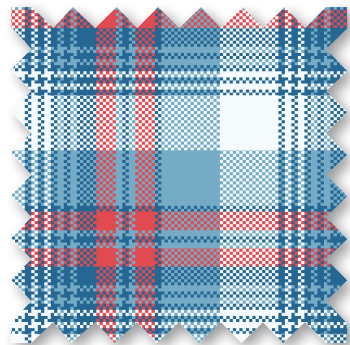
BRRR° ASHMORE PLAID

10105 CLASSIC

Chest pocket without embroidery | 91% brrr° Nylon / 9% Spandex (with brrr° technology) | 145006525



ROSEWOOD RED



CLASSIC WHITE

DRIVER KEEP PALM AND CARRY ON PERF POLO

5/25



10133 Outline Skipjack heat seal on back neck | Open sleeve | 2-piece self-collar | 3-button placket with branded white buttons | Drop tail hem | UV Protection | Stretch for ease of movement | Jersey | Recycled components | 94% Recycled Polyester / 6% Spandex | Sizes S-XXL | 95004275



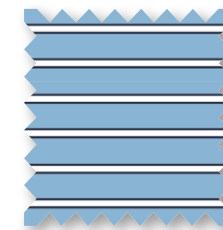
CLOUD WHITE

brrr° EEZE BELLVIEW STRIPE PERFORMANCE POLO

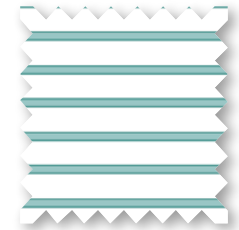
5/25



10101 Outline Skipjack heat seal logo on back neck | 2-piece self-collar | 3-button placket | Moisture wicking | brrr° cooling | UV Protection | Stretch | Quick dry | 83% brrr° Nylon / 17% Spandex | Sizes S-XXL | 99504400



CLEARWATER BLUE



CLASSIC WHITE

DRIVER BAD AND BOOZY PRINTED PERF POLO

5/25



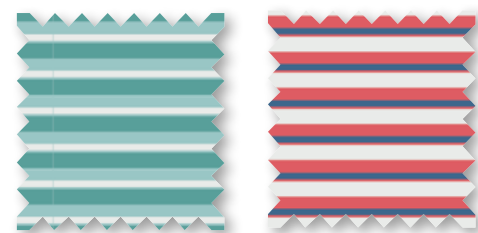
10132 Outline Skipjack heat seal on back neck | Open sleeve | 2-piece self-collar | 3-button placket with branded white buttons | Drop tail hem | UV Protection | Stretch for ease of movement | Jersey | Recycled components | 94% Recycled Polyester / 6% Spandex | Sizes S-XXL | 95004275



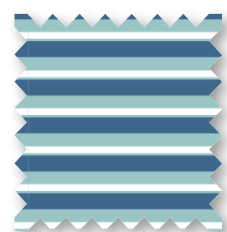
AGED DENIM

DRIVER GOLF STRIPE PERFORMANCE POLO | 5/25 

10100 Outline Skipjack heat seal on back neck | Open sleeve | 2-piece self-collar | 3-button placket with branded white buttons | Drop tail hem | UV Protection | Stretch for ease of movement | Jersey | Recycled components | 94% Recycled Polyester / 6% Spandex | Sizes S-XXL | 95004275



TURQUOISE SEA ROSEWOOD RED



ATLANTIC BLUE

MEN'S

6/25

INTERCOASTAL SPORT SHIRTS | 6/25

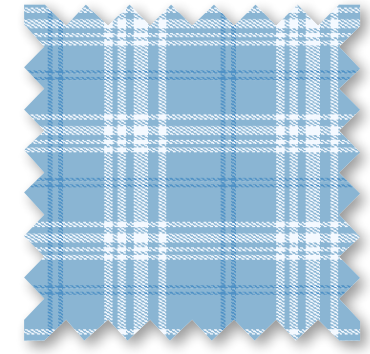


Sizes S-XXL (*3X noted)

MUSCOGEE PLAID

10107 CLASSIC

Chest pocket with embroidery
91% Nylon / 9% Spandex
135006075



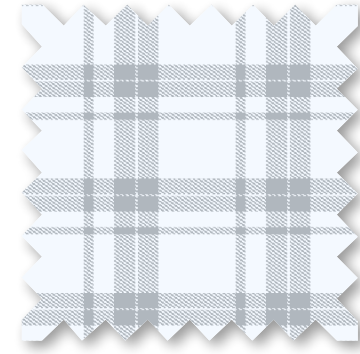
CLEARWATER BLUE

BRRR° RAMSEY PLAID



10106 CLASSIC

Chest pocket with embroidery
91% Nylon / 9% Spandex (brrr°)
145006525

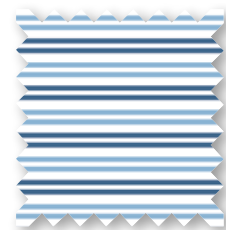


CLASSIC WHITE

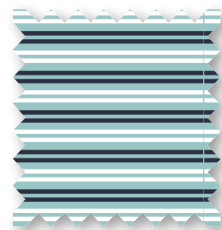
brrr° EEZE HARBOURVIEW STRIPE PERF POLO | 6/25



10102 Outline Skipjack heat seal on back neck | 2-piece self-collar | 3-button blacket | Moisture wicking | brrr cooling | UV Protection | 83% brrr Nylon / 17% Spandex | S-XXL | 99504400



CLASSIC WHITE



TURQUOISE SEA

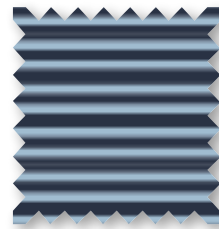
MEN'S

7/25

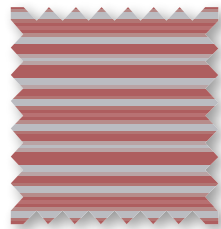
RYDER HEATHER RIDGEWAY STRIPE LS PERF POLO | 7/25



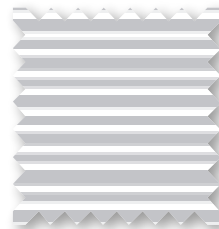
10297 Self collar | 3 button placket | Droptail hem | Internal collar stays in collar | Branded IMOP buttons | Outline Skipjack heat seal on back neck | 88% Polyester 12% Spandex | Sizes S-XXL | 118005310



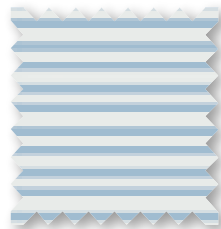
HEATHER
DRESS BLUE



HEATHER
DUSTY CORAL



HEATHER
PLANTINUM GREY



HEATHER
CLOUD WHITE

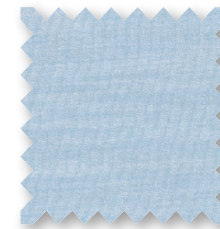
brrr° EEZE HEATHER PERFORMANCE POLO | 7/25



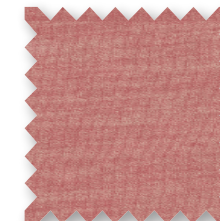
10348 Self collar | 3 button placket | Droptail hem | Internal collar stays in collar | Branded IMOP buttons | Outline Skipjack heat seal on back neck | 48% Polyester 45% brrr° Nylon 7% Spandex | Sizes S-XXL | 108004860



HEATHER
CAVIAR BLACK



HEATHER
DREAM BLUE

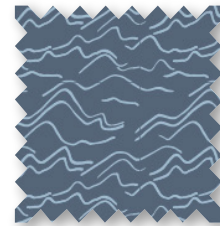


HEATHER
TUSCANY RED

DRIVER CHANGE YOUR ALTITUDE PRINTED POLO | 7/25



10298 Self collar | 3 button placket | Droptail hem | Internal collar stays in collar | Branded IMOP buttons | Outline Skipjack heat seal on back neck | 94% Recycled Polyester 6% Spandex | Sizes S-XXL | 98004214



BLUE HAZE

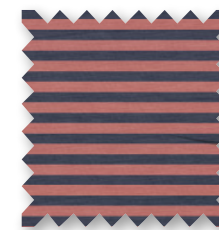
CRUISER HEATHER MICRO-STRIPE 1/4 ZIP | 7/25



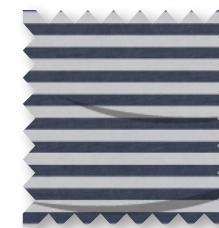
9619 Self collar | Quarter zip | Self sleeve cuff and hem band | Zipper placket with rubber branded pull | Signature Skip-stripe interior neck tape | Rubber Skipjack coin on back neck | 88% Polyester 12% Spandex | Sizes S-XXL | 120005200



HEATHER
DREAM BLUE



HEATHER
DUSTY CORAL



HEATHER
SHADOW GREY

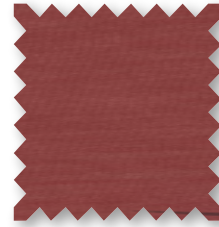
CRUISER HEATHER 1/4 ZIP | 7/25



9620 Self collar | Quarter zip | Self sleeve cuff and hem band | Raglan sleeve | Zipper placket with rubber branded pull | Signature Skip-stripe interior neck tape | Rubber Skipjack coin on back neck | 88% Polyester 12% Spandex | Sizes S-XXL | 120005200



HEATHER
CAVIAR BLACK



HEATHER
TUSCANY RED

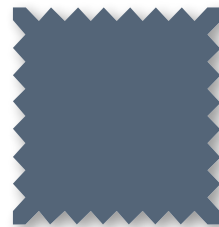
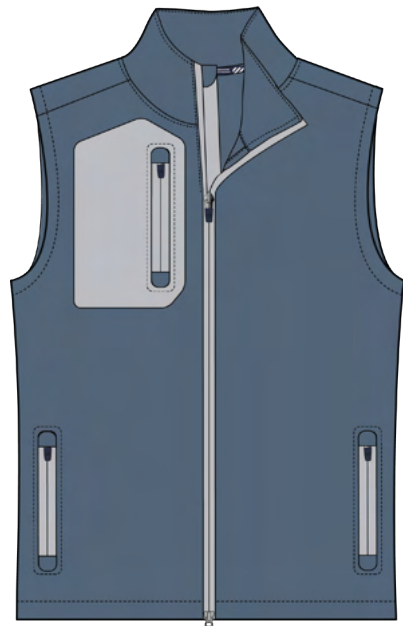


HEATHER
DRESS BLUE

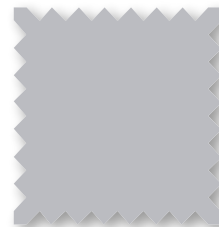
BOWLINE PERFORMANCE VEST | 7/25



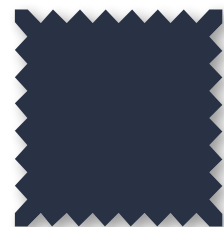
10333 Self collar | Full zip | Bonded chest zipper pocket | Zipper welt pockets | CF 2-way reverse coil zipper with branded rubber silicone puller | CF windguard for comfort | Self interior binding for clean finish | Fine mesh interior pocket bags | Locker loop at back neck | ST stripe back neck tape | Active Skipjack reflective heat transfer on CB collar | 85% Nylon 15% Spandex | Sizes S-XXL | 148006660



BLUE HAZE



PLATINUM GREY



DRESS BLUE

MEN'S

8/25

LOCKLEY HEATHER INTERLOCK CREW | 8/25

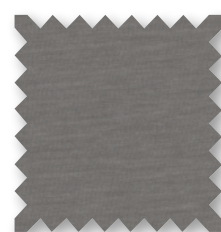
10338 Crew Neck | Self sleeve cuff and hem | Signature Skip-stripe interior neck tape | Coverstitch detailing | Exterior raised reflective Skipjack clamp label at bottom hem | 57% Polyester 33% Viscose 5% Nylon 5% Spandex | Sizes S-XXL | 118005074



HEATHER
BLUE HAZE



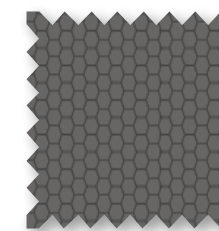
HEATHER
TUSCANY RED



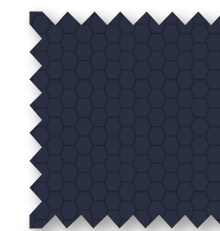
HEATHER
SHADOW GREY

OUTBOUND HEATHER 1/4 ZIP | 8/25

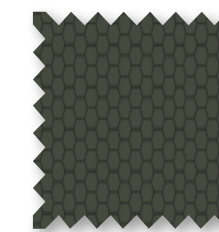
10763 Self collar | Quarter zip | Self foldover sleeve cuff and hem | Contrast zipper placket with rubber branded pull | Signature Skip-stripe interior neck tape | Exterior Raised Reflective Skipjack Clamp Label at bottom hem | 62% Cotton 33% Polyester 5% Elastane | Sizes S-XXL | 128005504



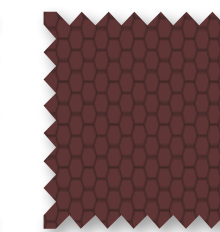
HEATHER
SHADOW GREY



HEATHER
TRUE NAVY



HEATHER
GULF GREEN



HEATHER
BORDEAUX RED

STRATFORD HEATHER INTERLOCK HOODIE | 8/25

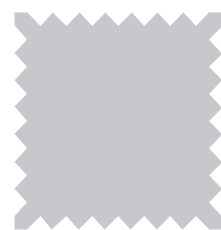
10337 Hood | Scuba neckline | Self sleeve cuff, hem, and piece hood | Signature Skip-stripe interior neck tape | Kanga pocket | Curved Hem | Hidden inner phone pocket | Exterior Raised Reflective Skipjack Clamp Label at bottom hem | 57% Polyester 33% Viscose 5% Nylon 5% Spandex | Sizes S-XXL | 128005504



HEATHER
DREAM BLUE



HEATHER
BLUE HAZE



HEATHER
PLATINUM GREY

WESTMONT JADE HEATHER 1/4 BUTTON | 8/25

10340 Rib collar | Quarter button | Rib sleeve cuff and hem | Exterior Raised Reflective Skipjack Clamp Label at bottom hem | 60% Cotton 40% Polyester | Sizes S-XXL | 198008910



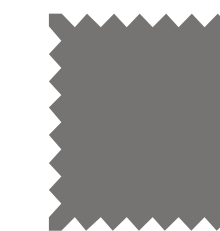
HEATHER
DRESS BLUE



HEATHER
SHADOW GREY



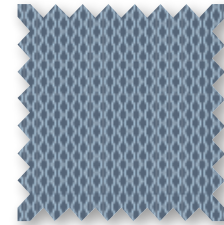
HEATHER
BORDEAUX RED



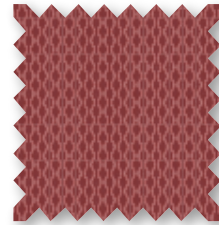
HEATHER
GULF GREEN

HUCKSLEY VEST | 8/25

10332 Mock collar with 4-way stretch binding | Contrast interior collar | Full zip | Contrast welt pockets with zipper closure | 4-way stretch binding at armholes and bottom hem | CF 2-way coil zipper with ST non-lock zipper pull | Light quilting on front and back yoke for warmth | Locker loop at back neck | Interior pocket patch on wearer's left pocket bag | Youth dropdown | 100% Polyester | Sizes S-XXL | 158007110



MOUNTAIN
SPRING BLUE



TUSCANY RED

MEN'S

9/25

SULLIVAN 5 POCKET PANT | 9/25

10335 30", 32", 34" inseam | Trim fit | Rigid waistband | Classic five pocket with two front hand pockets, two back patch pockets and front right coin pocket | Flat felled stitching throughout for a clean, durable finish | Decorative stitching on back patch pockets | Classic 5-pocket back yoke above patch pockets | ST stripe printed cotton pocket bags | Solid grosgrain ribbon binding at interior waistband | Branded center front shank button and auto-locking zipper fly | Branded metal rivets on each front pocket | Debossed textured Skipjack logo on faux leather patch on back waistband | 67% Cotton 30% Modal 3% Spandex | Sizes W28,30,32-36,38,40,42 /L30,32,34 | 135006075



TRUE NAVY



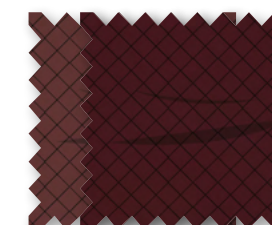
SANDSTONE
KHAKI



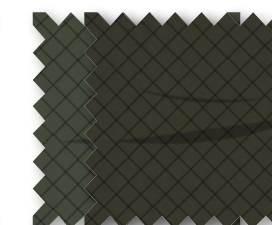
HAZELNUT
KHAKI

ARDEN REVERSIBLE 1/4 ZIP | 9/25

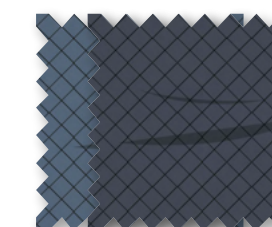
10341 Self collar | Quarter zip | DTM jersey binding at neck, cuff, and hem | Zipper placket with du reversible zipper pull | Rubber Skipjack coin on back neck | 52% Polyester 42% Recycled Polyester 6% Tencel | Sizes S-XXL | 138006210



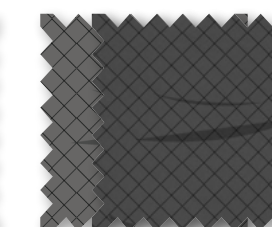
BORDEAUX RED



GULF GREEN



BLUE HAZE



SHADOW GREY

BOWLINE PERFORMANCE JACKET | 9/25

10334 Self collar | Full zip | Bonded chest zipper pocket | Zipper welt pockets | CF 2-way reverse coil zipper with branded rubber silicone puller | CF windguard for comfort | Self interior binding for clean finish | Fine mesh interior pocket bags | Locker loop at back neck | ST stripe back neck tape | Active Skipjack reflective heat transfer on CB collar | 85% Nylon 15% Spandex | Sizes S-XXL | 178008010



PLATINUM GREY



DRESS BLUE

YOUTH SIZE CHART

Size		Height	Weight	Chest (Avg)	Waist (Avg)
XS	4	39 - 42	34 - 39	23	21
XS	5	42 - 44	40 - 45	24	21.5
S	6	45 - 47	46 - 49	25	22
S	7	49 - 51	50 - 58	26	23
M	8	51 - 53	58 - 63	27	23.5
M	10	54 - 56	64 - 74	28	24.5
L	12	57 - 59	75 - 88	29	25.5
L	14	60 - 63	89 - 105	30 - 31	26.5
XL	16	64 - 67	106 - 115	31 - 33	27.5

YOUTH

YOUTH T3 GULF SHORT | 12/25



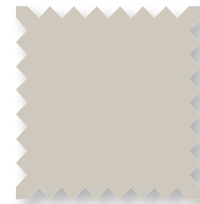
5118 Skipjack embroidery above right back pocket | Adjustable waistband at interior for sizes 4-10 | T3 heat transfer main label at back interior waistband | Coil zipper with rubber coated Skipjack button closure | Mesh pocketing | One button closure back pocket on left, other is open | 2" self fabric on bottom of front pockets for extra security | 4-way stretch | Quick dry | Moisture wicking | 56% Cotton / 36% Polyester / 8% Spandex | Sizes 4, 6, 8, 10, 12, 14, 16 | 59502975



SEAGULL GREY



TRUE NAVY

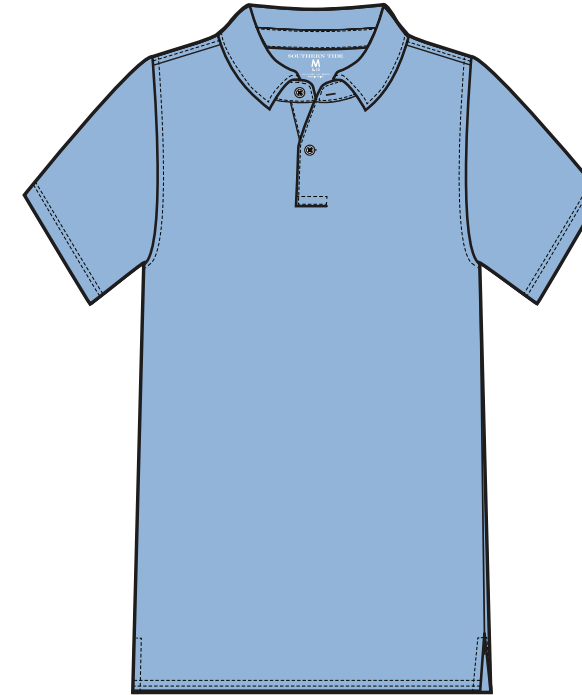


STONE

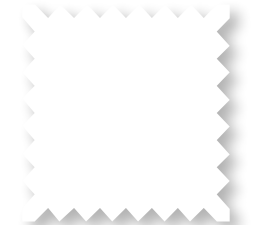
YOUTH DRIVER PERFORMANCE POLO | 12/25



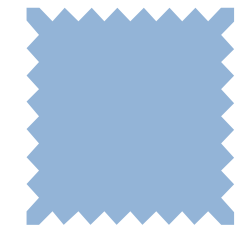
7991 Skipjack heat seal loo on back neck | Open chest | Printed label for comfort | Open sleeve | 2-piece self-collar | 2-button placket with branded white buttons | Even hem | Moisture wicking | Stretch | UV Protection | 94% Recycled Polyester / 6% Spandex | Sizes XS-XL | 55002475



TRUE NAVY



CLASSIC WHITE



SKY BLUE

YOUTH HEATHER T3 GULF SHORT | 12/25



6376 Skipjack embroidery above right back pocket | Adjustable waistband at interior for sizes 4-10 | T3 heat transfer main label at back interior waistband | Coil zipper with rubber coated Skipjack button closure | Mesh pocketing | One button closure back pocket on left, other is open | 2" self fabric on bottom of front pockets for extra security | 4-way stretch | Quick dry | Moisture wicking | 73% Polyester / 19% Cotton / 8% Spandex | Sizes 4, 6, 8, 10, 12, 14, 16 | 59502975

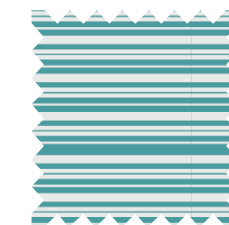


HEATHER PORTO BLUE

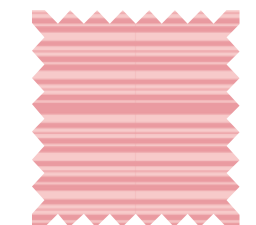
YOUTH RYDER HEATHER BOMBAY STRIPE PERF POLO | 12/25



9666 Outline Skipjack heat seal on left chest | 2-piece self-collar | 2-button placket with laser engraved buttons | Even hem | Moisture wicking | UV Protection | Stretch | Soft touch | 88% Polyester / 12% Spandex | Sizes XS-XL | 55002475



HEATHER TIDAL WAVE

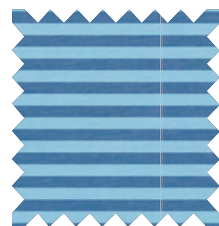


HEATHER FLAMINGO PINK

YOUTH CRUISER HEATHER MICRO-STRIPE 1/4 ZIP | 12/25



9665 Outline Skipjack heat seal logo | Open chest | Self standing collar | Zipper placket with rubber branded pull | Self sleeve cuff and hem band | UV Protection | Moisture wicking | 88% Polyester / 12% Spandex | Sizes XS-XL | 70003100



HEATHER ATLANTIC BLUE



HEATHER TIDAL WAVE

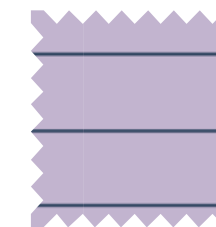
YOUTH RYDER HEATHER MARIN STRIPE PERF POLO | 1/25



9952 Outline Skipjack heatseal logo on left chest | 2-piece self-collared polo | 2-button placket with laser engraved buttons | Even hem | Moisture wicking | UV Protection | Stretch | 88% Polyester / 12% Spandex | Sizes XS-XL | 55002475



HEATHER AGED DENIM



HEATHER ORCHID PETAL



HEATHER RAIN WATER

YOUTH HEATHER T3 GULF SHORT | 1/25



6376 Skipjack embroidery above right back pocket | Adjustable waistband at interior for sizes 4-10 | T3 heat transfer main label at back interior waistband | Coil zipper with rubber coated Skipjack button closure | Mesh pocketing | One button closure back pocket on left, other is open | 2" self fabric on bottom of front pockets for extra security | 4-way stretch | Quick dry | Moisture wicking | 73% Polyester / 19% Cotton / 8% Spandex | Sizes 4, 6, 8, 10, 12, 14, 16 | 59502975



HEATHER ATLANTIC BLUE



HEATHER TIDAL WAVE

YOUTH DRIVER WHY SO CRABBY PRINTED PERF POLO | 3/25



9965 Outline Skipjack heat seal logo | 2-piece self-collared polo | 2-button placket with branded white buttons | Even hem | Interior collar stays | Stretch | UV Protection | Moisture wicking | Recycled components | 94% Recycled Polyester / 6% Spandex | Sizes XS-XL | 55002475



CLASSIC WHITE

Y DRIVER SEASCAPE SAILING PRINTED PERF POLO | 3/25 

9955 Outline Skipjack heat seal logo | 2-piece self-collar | 2-button placket with branded white buttons | Even hem | Interior collar stays | Stretch | UV Protection | Moisture wicking | Recycled components | 94% Recycled Polyester / 6% Spandex | Sizes XS-XL | 55002475



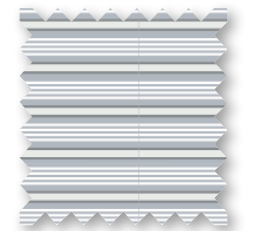
BALTIC TEAL

YOUTH DRIVER CRAWFORD STRIPE PERF POLO | 4/25 

10137 2-piece-self collar | 2-button placket with laser engraved buttons | Even hem | Moisture wicking | UV protection | Stretch | Recycled components | 94% Recycled Polyester / 6% Spandex | XS-XL | 55002475



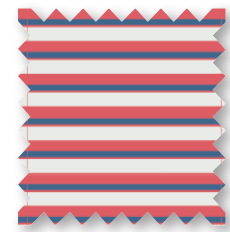
AGED DENIM



SLATE GREY

YOUTH DRIVER GULF STRIPE PERF POLO | 4/25 

10136 2-piece-self collar | 2-button placket with laser engraved buttons | Even hem | Moisture wicking | UV protection | Stretch | Recycled components | 94% Recycled Polyester / 6% Spandex | XS-XL | 55002475



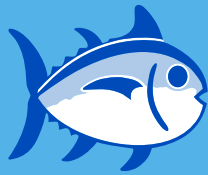
ROSEWOOD RED

Y DRIVER CATCH YOU LATER PRINTED PERF POLO | 4/25 

10138 2-piece-self collar | 2-button placket with laser engraved buttons | Even hem | Moisture wicking | UV protection | Stretch | Recycled components | 94% Recycled Polyester / 6% Spandex | XS-XL | 55002475



CLOUD WHITE



SOUTHERN TIDE

orders@southerntide.com | app.repspark.com/stide

84 Villa Road | Suite 101 | Greenville, SC 29615 | 864-236-8015 Phone | 866-519-5060 Fax | 855-890-8334 Toll Free