



SOUTHERN TIDE

# GOLF

2024



# ABOUT SOUTHERN TIDE

Founded in 2006, Greenville, S.C.-based Southern Tide is a coastal lifestyle apparel brand that embodies a Southern state of mind and adventurous spirit. Southern Tide is best known for its Skipjack Polo, deemed by many to be the most comfortable premium polo shirt. Innovative, yet timeless in its youthful style, Southern Tide offers an array of apparel and accessory products for men, women, and kids that deliver their authentic lifestyle through quality, experience, and service.

## WE ARE:

SOUTHERN | COASTAL | PREMIUM | ENERGETIC | AUTHENTIC | STORYTELLERS | EXPERIENTIAL

## SCAN

for our imagery  
and other fun  
Marketing assets!



## CATALOG CONTENTS

CLUB LOOKS .....	4
BOTTOMS .....	9
TOPS .....	15
WOMENS .....	29



## ORDER FROM REPSARK: *app.repspark.com / stide*



CHECK INVENTORY AVAILABILITY 24/7



SHARE ORDER WITH OUTSIDE REP



ONLINE ASSISTANCE AVAILABLE



COPY SIZE RUNS FOR FASTER ORDERING



ACCESS TO DIGITAL ASSETS & POS SIGNAGE



DOWNLOAD PRODUCT UPCs



CHECK ORDER STATUS & TRACKING INFO



BROWSE A CATALOG OR ALL PRODUCTS WITHOUT ORDERING



PLACE ORDERS ANYTIME



CREATE MULTIPLE SHIPMENT ORDERS



CUSTOM ORDERING



TOURNAMENT/EVENT PACKAGES

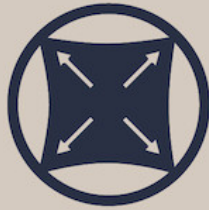
# ICONS KEY



QUICK-DRY



WICKING



STRETCH



COOLING MATERIALS



UV PROTECTION



BRRR COOLING TECHNOLOGY



WATER REPELLENT



SUSTAINABLE MATERIALS



ANTI-MICROBIAL

---

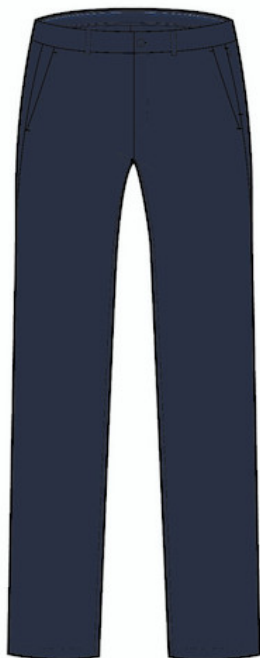


# CLUB LOOKS

# JACK PERFORMANCE PANT | 12/25



**8125** 30", 32", 34" - Classic Leg | Rigid waistband | Slanted front hand pockets, right has separate coin pocket at bottom of bag | Welt back hand pockets with snap closure | Hidden zipper pocket on front left side seam | Performance jersey pocketing | Branded center front button and auto-locking zipper fly | 2-tone blue stitching on interior waistband | Outline Skipjack embroidery above back right pocket | 100% Polyester | Sizes: W/L - 28/30,28/32,30/30,30/32,30/34,32/30,32/32,32/34,33/30,33/32,33/34,34/30,34/32,34/34,35/30,35/32,36/30,36/32,36/34,38/30,38/32,38/34,40/32,42/32 | 135006075



SANDSTONE KHAKI



PUTTY



DARK SEAS (1/25)



STEEL GREY



TRUE NAVY

L/W	28	30	31	32	33	34	35	36	37	38	40	42
30												
32												
34												

# CHARLESTON BLAZER | 12/25

**7242** Regular or tall | Relaxed fit | 2 Button Front | Half-lined back | Knit gussets at underarm | Side vents | Tonal wool felt at under collar | Contrast printed tape at interior seams and lining edge | Mitred sleeve vent with decorative buttons | Welt left chest pocket | Two front patch pockets | Three interior horizontal welt pockets, right side with button closure | Interior vertical zippered security pocket on left | Navy "Built with a Purpose" patch near interior right pocket | 100% Coolpass Polyester | Sizes: 36/38/40/42/44/46/48R, 42/44/46/48L | 2950012500



TRUE NAVY



PERFECTLY PALE KHAKI (1/25)

# brrr° INTERCOASTAL SPORT SHIRTS | 12/25



Button down collar | Left chest pocket | Eyelets under arm | Sleeve placket with 2-button adjustable cuff |  
Branded IMOP buttons | Blue button sew on bottom button of front sleeve and sleeve placket | No logo | 91% brrr°  
Nylon 9% Spandex | S-XXL | 145006525



## BRRR° SOLID INTERCOASTAL

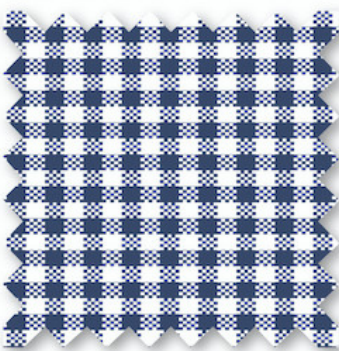
8546 CLASSIC



CLASSIC WHITE

## BRRR° MICRO-GINGHAM

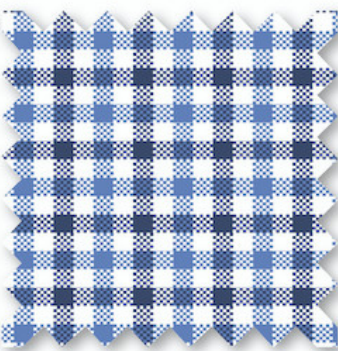
7857 CLASSIC



SEVEN SEAS BLUE

## BRRR° BOWRY

7858 CLASSIC



SEVEN SEAS BLUE

# CHARLESTON SPORT SHIRTS | 12/25



Hidden button-down collar | Left chest pocket | Sleeve placket with 2-button adjustable cuff | Branded IMOP buttons | Outline Skipjack embroidery on pocket hem | 56% Cotton 39% Coolmax Polyester 5% Spandex | S-XXL | 138006210

## OVERBROOK SOLID

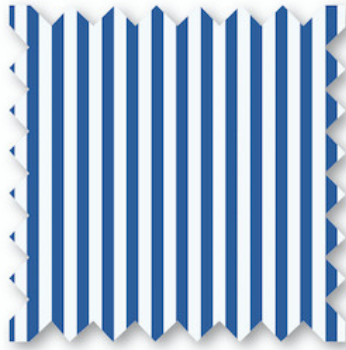
10638 CLASSIC



CLASSIC WHITE

## GRANBY STRIPE

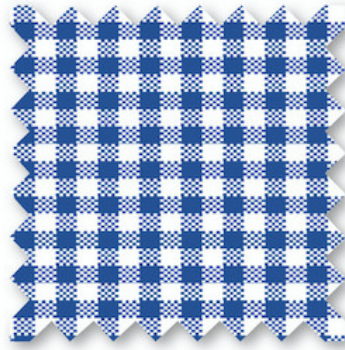
10640 CLASSIC



COBALT BLUE

## PARKWOOD MICRO-GINGHAM

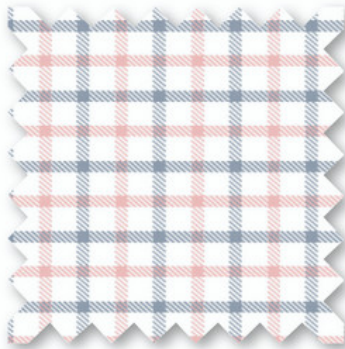
10641 CLASSIC



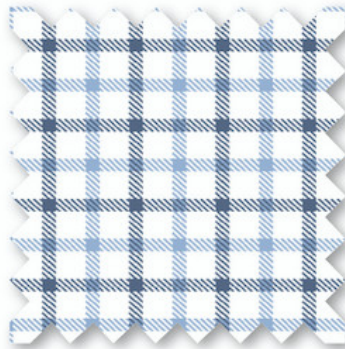
COBALT BLUE

## LARKIN CHECK

10639 CLASSIC



PALE ROSETTE PINK



CLEARWATER BLUE



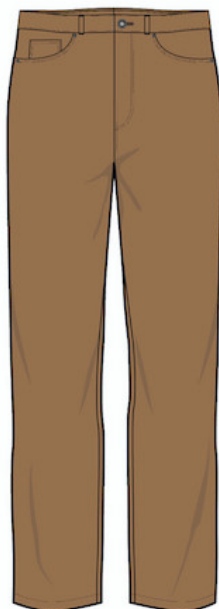
**PERFECT  
BOTTOM  
TO PLAY IN**

# SULLIVAN 5 POCKET PANT | 12/25



**10335** 30", 32", 34" - Tapered leg/Trim Fit | Rigid waistband | Classic five pocket with two front hand pockets, two back patch pockets and front right coin pocket | Flat Felled Stitching throughout for a clean, durable finish | Decorative stitching on back patch pockets | Classic 5-pocket back yoke above patch pockets | ST stripe printed cotton pocket bags | Solid grosgrain ribbon binding at interior waistband | Branded center front shank button and auto-locking zipper fly | Branded metal rivets on each front pocket | Debossed textured Skipjack logo on faux leather patch on back waistband | **67% Cotton 30% Modal 3% Spandex** | Sizes: W/L - 28/30,28/32,30/30,30/32,30/34,32/30,32/32,32/34,33/30,33/32,33/34,34/30,34/32,34/34,35/30,35/32,36/30,36/32,36/34,38/30,38/32,38/34,40/32,42/32 | 135006075

Dressier Casual Pant



SANDSTONE KHAKI



HAZELNUT KHAKI



STONE (1/25)



ULTIMATE GREY



BLUE HAZE (1/25)

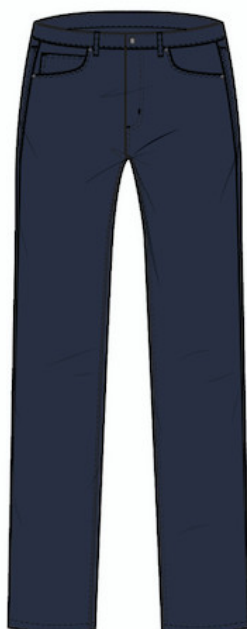
L/W	28	30	31	32	33	34	35	36	37	38	40	42
30												
32												
34												

# INTERCOASTAL PANT | 12/25



**4115** 30", 32", 34" - Tapered leg/trim Fit | Rigid waistband | Classic five pocket with two front hand pockets, two back patch pockets and front right coin pocket | Signature Skipjack camo printed cotton pocket bags | Branded center front shank button and auto-locking zipper fly | Branded metal rivets on each front pocket | Signature Skipjack boat rope binding at interior back waistband | Outline Skipjack embroidery on coin pocket | **97% Nylon 3% Spandex** | Sizes: W/L - 28/30,28/32,30/30,30/32,30/34,32/30,32/32,32/34,33/30,33/32,33/34,34/30,34/32,34/34,35/30,35/32,36/30,36/32,36/34,38/30,38/32,38/34,40/32,42/32 | 135006075

Perfect for Golf or having to be outside in the heat!



SANDSTONE KHAKI



STONE



SEAGULL GREY



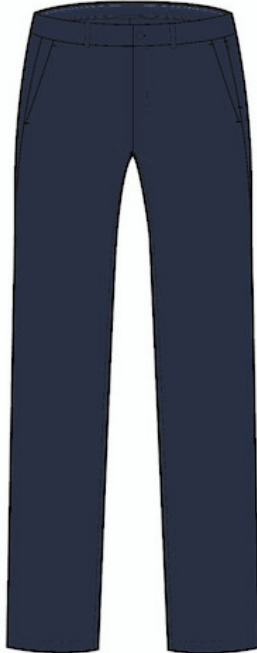
TRUE NAVY

L/W	28	30	31	32	33	34	35	36	37	38	40	42
30												
32												
34												

# JACK PERFORMANCE PANT | 12/25

**8125** 30", 32", 34" - Classic leg | Rigid waistband | Slanted front hand pockets, right has separate coin pocket at bottom of bag | Welt back hand pockets with snap closure | Hidden zipper pocket on front left side seam | Performance jersey pocketing | Branded center front button and auto-locking zipper fly | 2-tone blue stitching on interior waistband | Outline Skipjack embroidery above back right pocket | **100% Polyester** | Sizes: W/L -28/30,28/32,30/30,30/32,30/34,32/30,32/32,32/34,33/30,33/32,33/34,34/30,34/32,34/34,35/30,35/32,36/30,36/32,36/34,38/30,38/32,38/34,40/32,42/32 | 135006075

Dressier  
Tech  
Pant!



L/W	28	30	31	32	33	34	35	36	37	38	40	42
30												
32												
34												

# EXCURSION PERFORMANCE JOGGER | 12/25

**9371** 30" Inseam - athletic fit | Fully elasticated waistband | Crotch gussett | Self fold over cuffs at ankle | Slanted front hand pockets with performance jersey pocketing | Two-toned drawcord with branded tip | Back zippered welt pocket on wearer's right side | Skipjack reflective heat seal above right back pocket | 86% Polyester 14% Spandex | S-XXL | 135006075

Thin, lightweight!



# T3 GULF SHORT | 12/25



**4744** 9" inseam | Rigid waistband | Slanted front hand pockets, right has separate coin pocket at bottom of bag | Welted back hand pockets, left has button closure | Mesh Pocket Bags, front have woven contrast at bottom of bag | Branded center front button and auto-locking zipper fly | Outline Skipjack embroidery above back right pocket | 56% Cotton 36% Polyester 8% Spandex | Sizes: 28, 30, 32-36, 38, 40, 42 | 89504000



TRUE NAVY



STONE



SEAGULL GREY



SANDSTONE KHAKI

L/W	28	30	31	32	33	34	35	36	37	38	40	42
9"												

# brrr<sup>o</sup> DIE SHORT | 12/25



**7769** 8" inseam | Rigid waistband | Slanted front hand pockets, right has separate coin pocket at bottom of bag | Welted back hand pockets | Mesh pocket bags, front have woven contrast at bottom of bag | Branded center front button and auto-locking zipper fly | Outline Skipjack embroidery above back right pocket | Interior logo elastic waistband gripper | 85% brrr Nylon 15% Spandex | Sizes: 28, 30, 32-36, 38, 40, 42 | 108004860

## #1 SHORT



STONE



DARK SEAS



SANDSTONE KHAKI



TRUE NAVY



SEAGULL GREY



FOG



STEEL GREY



MINERAL RED



GREEN SURF (1/25)



CAVIAR BLACK (1/25)

L/W	28	30	31	32	33	34	35	36	37	38	40	42
8"												

# brrr° DIE WHITE SHORT | 12/25



**10725** 8" inseam | Rigid waistband | Slanted front hand pockets, right has separate coin pocket at bottom of bag | Welted back hand pockets | Mesh pocket bags, front have woven contrast at bottom of bag | Branded center front button and auto-locking zipper fly | Outline Skipjack embroidery above back right pocket | Interior logo elastic waistband gripper | **85% brrr Nylon 15% Spandex** | Sizes: 28, 30, 32-36, 38, 40, 42 | 108004860

NEW!



CAN NOT SEE THROUGH!



CLASSIC WHITE

L/W	28	30	31	32	33	34	35	36	37	38	40	42
8"												

# brrr° DIE ISLAND CAMO PRINTED SHORT | 1/25



**10685** 8" inseam | Rigid waistband | Slanted front hand pockets, right has separate coin pocket at bottom of bag | Welted back hand pockets | Mesh pocket bags, front have woven contrast at bottom of bag | Branded center front button and auto-locking zipper fly | Outline Skipjack embroidery above back right pocket | Interior logo elastic waistband gripper | **85% brrr Nylon 15% Spandex** | Sizes: 28, 30, 32-36, 38, 40, 42 | 118005310

NEW!



DARK SEAS



ULTIMATE GREY

L/W	28	30	31	32	33	34	35	36	37	38	40	42
8"												

# brrr° DIE 10" SHORT | 1/25



**10684** 10" inseam | Rigid waist with interior gripper elastic | Slanted front hand pockets, right has separate coin pocket at bottom of bag | Weltd back hand pockets | Mesh pocket bags, front have woven contrast at bottom of bag | Branded center front button and auto-locking zipper fly | Outline Skipjack embroidery above back right pocket | Interior logo elastic waistband gripper | 89% brrr Nylon/11% Spandex | Sizes: 28, 30, 32-36, 38, 40, 42 | 108004860

**NEW!!!**



TRUE NAVY



STONE



SEAGULL GREY

L/W	28	30	31	32	33	34	35	36	37	38	40	42
10"												

# CADDIE BRAIDED BELT | 1/25



**10878** Stretch braided belt | Southern Tide engraving on buckle | 100% Nylon | Sizes: S, M, L, XL | 88003960



CASTLE ROCK



SLATE GREY



TRUE NAVY

**TOP OF  
THE LINE  
PERFORMANCE  
SHIRTS**

# CRUISER HEATHER 1/4 ZIP | 12/25



**9620** Self collar | Quarter zip | Self sleeve cuff and hem band | Zipper placket with rubber branded pull | Signature Skip-stripe interior neck tape | Rubber Skipjack coin on back neck | 88% Polyester 12% Spandex | S-XXL | 120005200



HEATHER  
DRESS BLUE



HEATHER  
SLATE GREY



HEATHER  
CAVIAR BLACK

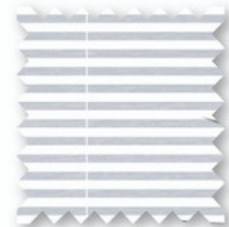
# HEATHER CRUISER MICRO-STRIPE 1/4 ZIP | 12/25



**10051** Self Collar | Quarter zip | Self sleeve cuff and hem band | Zipper placket with rubber branded pull | Signature Skip-stripe interior neck tape | Rubber Skipjack coin on back neck | 88% Polyester 12% Spandex | S-XXL | 120005400



HEATHER BLACK



HEATHER  
SLATE GREY



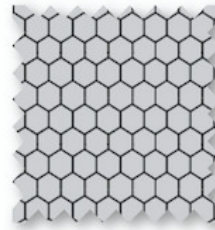
HEATHER NAVY



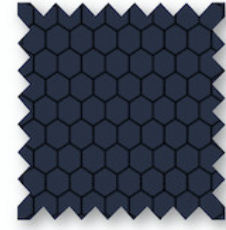
# SCUTTLE HEATHER HOODIE PERF 1/4 ZIP | 12/25



**9343** Quarter Zip | Exterior raised Skipjack clamp label at bottom hem | Hood | Fold over self-cuff | Zipper with branded zipper pull | 93% Polyester 7% Spandex | S-XXL | 120005200



HEATHER  
SLATE GREY



HEATHER  
TRUE NAVY

# BOWLINE PERFORMANCE VEST | 12/25



**10333** Self Collar | Full zip | Chest zipper pocket | Zipper hand pockets | CF 2-way reverse coil zipper with branded rubber silicone puller | CF windguard for comfort | Self interior binding for clean finish | Fine mesh interior pocket bags | Locker loop at back neck | ST stripe back neck tape | Active Skipjack reflective heat transfer on CB collar | 85% Nylon 15% Spandex | S-XXL | 148006660



DRESS BLUE



PLATINUM GREY



CAVIAR BLACK  
(1/25)

# BOWLINE 1/2 ZIP PERF HOODIE PULLOVER | 1/25

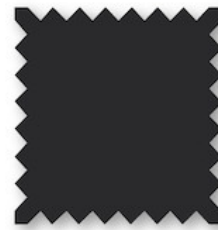
**10732** Half zip with hood | Chest zipper pocket | Zipper hand pockets | CF reverse coil zipper with branded rubber silicone puller | CF windguard for comfort | Self interior binding for clean finish | Fine mesh interior pocket bags | Locker loop at back neck | ST stripe back neck tape | Reflective Southern Tide heat transfer centered on exterior hood | 85% Nylon 15% Spandex | S-XXL | 168007560



PLATINUM GREY



DRESS BLUE



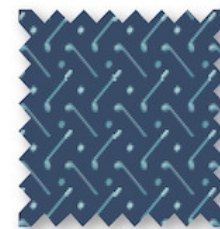
CAVIAR BLACK

# CLUBBIN' IT PRINT CRUISER 1/4 ZIP | 1/25

**10691** Self collar | Quarter zip | Self sleeve cuff and hem band | Zipper placket with rubber branded pull | Signature Skip-stripe interior neck tape | Rubber Skipjack coin on back neck | 88% Polyester 12% Spandex | S-XXL | 128005760



CLASSIC WHITE



AGED DENIM

# ISLAND CAMO PRINT CRUISER 1/4 ZIP | 1/25



**10690** Self Collar | quarter zip | Self sleeve cuff and hem band | Zipper placket with rubber branded pull | Signature Skip-stripe interior neck tape | Rubber Skipjack coin on back neck | 88% Polyester 12% Spandex | S-XXL | 128005760



MENS +  
YOUTH



CLEARWATER  
BLUE



CLASSIC WHITE

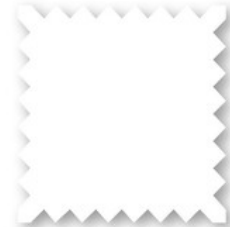
# SS RYDER PERFORMANCE POLO | 12/25



**8082** Self collar | 3 button placket | Droptail hem | Internal collar stays in collar | Branded IMOP buttons | Outline Skipjack heat seal on back neck | 88% Polyester 12% Spandex | Sizes S-XXL | 98004214



TRUE NAVY



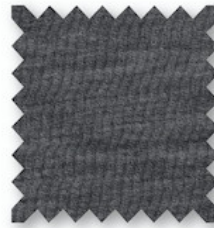
CLASSIC WHITE

**brrr° eeze HEATHER PERFORMANCE POLO | 12/25**



**10348** Self collar | 3 button placket | Droptail hem | Internal collar stays in collar | Branded IMOP buttons | Outline Skipjack heat seal on back neck | **48% Polyester 45% brrr° Nylon 7% Spandex** | S-XXL | 108004860

**COOLING!**



HEATHER  
CAVIAR BLACK



HEATHER  
NAUTICAL NAVY



HEATHER  
MARINE BLUE  
(1/25)



HEATHER  
OCEAN CHANNEL



HEATHER  
STEEL GREY



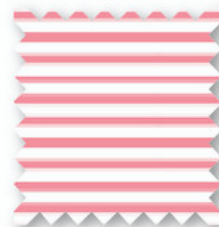
HEATHER  
ORCHID PETAL  
(1/25)

**brrr° eeze MEADOWBROOK STRIPE POLO | 12/25**

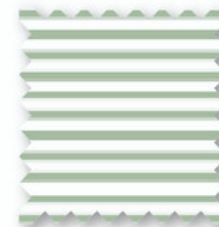


**10617** Self collar | 3 button placket | Droptail hem | Internal collar stays in collar | Branded IMOP buttons | Outline Skipjack heat seal on back neck | **83% brrr° Nylon 17% Spandex** | S-XXL | 108004860

**COOLING!**



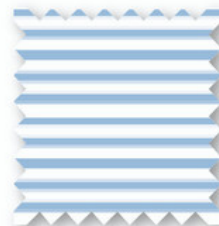
GERANIUM PINK



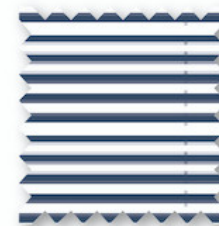
SMOKE GREEN



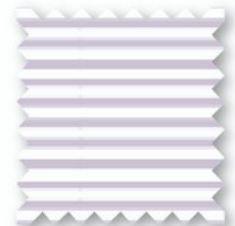
PLATINUM GREY



CLEARWATER  
BLUE



AGED DENIM



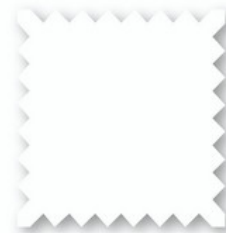
ORCHID PETAL

# THE SEAPORT POLO | 1/25

**10900** Self Collar | 3 button placket | Droptail Hem | Branded IMOP buttons | Raised skipjack outline flag label on wearer's left hem | 57% Cotton 38% Tencel 5% Spandex | S-XXL | 98004410



PIMA COTTON - SOFTNESS OVERLOAD!



CLASSIC WHITE



AGED DENIM

# THE SEAPORT DAVENPORT STRIPE POLO | 1/25

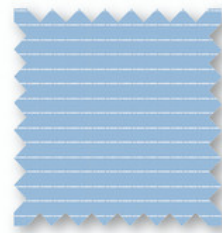
**10625** Self Collar | 3 button placket | Droptail hem | Branded IMOP buttons | Raised skipjack outline flag label on wearer's left hem | 57% Cotton 38% Tencel 5% Spandex | S-XXL | 98004410



PIMA COTTON - SOFTNESS OVERLOAD!



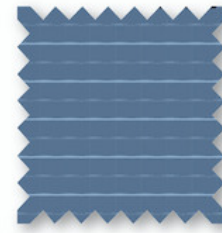
MORNING MIST  
SAGE



CLEARWATER  
BLUE



GERANIUM PINK



CORONET BLUE

# DRIVER CLUBBIN IT PRINTED POLO | 1/25



**10692** Self collar | 3 button placket | Droptail hem | Internal collar stays in collar | Branded IMOP buttons | Outline Skipjack heat seal on back neck | 94% Recycled Poly 6% Spandex | S-XXL | 98004214



**DRIVER IS RECYCLED POLY! and ONE OF OUR TOP SELLING STYLES!**



CLASSIC WHITE



AGED DENIM

# DRIVER LET'S GO CLUBBING PRINTED POLO | 1/25



**10693** Self collar | 3 button placket | Droptail hem | Internal collar stays in collar | Branded IMOP buttons | Outline Skipjack heat seal on back neck | 94% Recycled Poly 6% Spandex | S-XXL | 98004214



**DRIVER IS RECYCLED POLY! and ONE OF OUR TOP SELLING STYLES!**



OCEAN AQUA

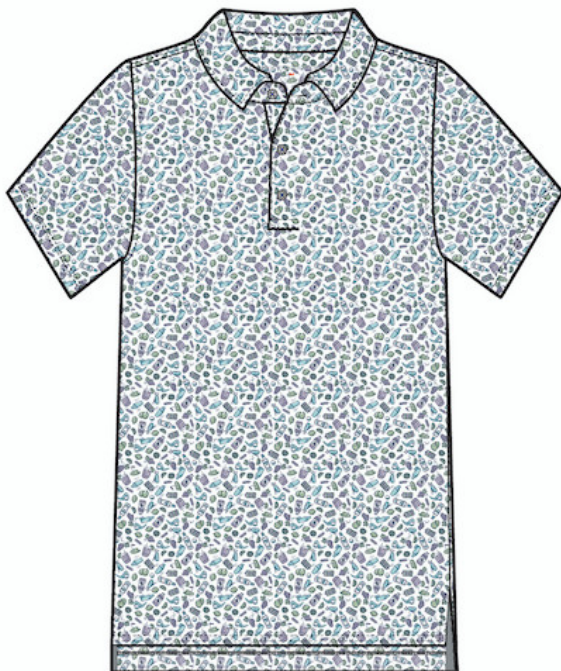


CORONET BLUE

# DRIVER DAZED AND TRANSFUSED PRINTED POLO | 1/25



**10711** Self collar | 3 button placket | Droptail hem | Internal collar stays in collar | Branded IMOP buttons | Outline Skipjack heat seal on back neck | 94% Recycled Poly 6% Spandex | S-XXL | 98004214



**DRIVER IS RECYCLED POLY! and ONE OF OUR TOP SELLING STYLES!**



CLASSIC WHITE

# DRIVER ISLAND BLOOMS PRINTED POLO | 1/25



**10715** Self collar | 3 button placket | Droptail hem | Internal collar stays in collar | Branded IMOP buttons | Outline Skipjack heat seal on back neck | 94% Recycled Poly 6% Spandex | S-XXL | 98004214



**DRIVER IS RECYCLED POLY! and ONE OF OUR TOP SELLING STYLES!**



CLEARWATER  
BLUE



SURF SPRAY  
SAGE

# DRIVER VERDAE STRIPE POLO | 2/25



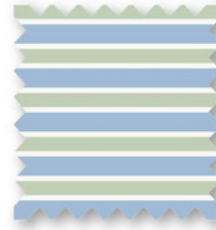
**10619** Self collar | 3 button placket | Droptail hem | Internal collar stays in collar | Branded IMOP buttons | Outline Skipjack heat seal on back neck | 94% Recycled Poly 6% Spandex | S-XXL | 98004214



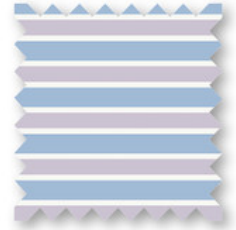
**DRIVER IS RECYCLED POLY! and ONE OF OUR TOP SELLING STYLES!**



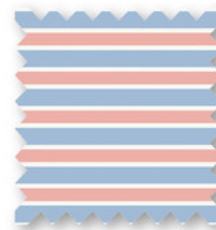
GOLDEN HAZE  
YELLOW



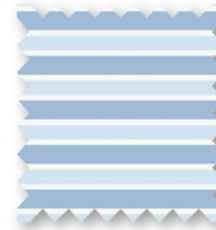
SEACREST  
GREEN



ORCHID PETAL



APRICOT BLUSH  
CORAL



DELICATE  
BLUE

# DRIVER CASUAL WATER PRINTED POLO | 2/25



**10717** Self collar | 3 button placket | Droptail hem | Internal collar stays in collar | Branded IMOP buttons | Outline Skipjack heat seal on back neck | 94% Recycled Poly 6% Spandex | S-XXL | 98004214



**DRIVER IS RECYCLED POLY! and ONE OF OUR TOP SELLING STYLES!**



CORONET BLUE



# DRIVER VACATION VIEWS PRINTED POLO | 2/25



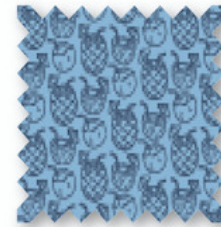
**10718** Self collar | 3 button placket | Droptail hem | Internal collar stays in collar | Branded IMOP buttons | Outline Skipjack heat seal on back neck | 94% Recycled Poly 6% Spandex | S-XXL | 98004214



DRIVER IS RECYCLED POLY! and ONE OF OUR TOP SELLING STYLES!



WISTERIA PURPLE



CLEARWATER BLUE

# brrr° eeze BEATTIE STRIPE PERFORMANCE POLO | 2/25

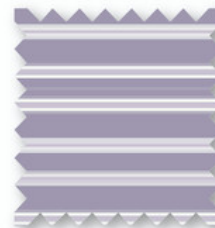


**10621** Self collar | 3 button placket | Droptail hem | Internal collar stays in collar | Branded IMOP buttons | Outline Skipjack heat seal on back neck | 83% brrr° Nylon 17% Spandex | S-XXL | 108004860

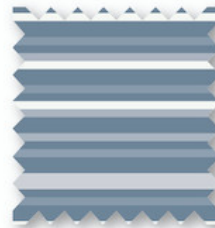
COOLING!



AGED DENIM



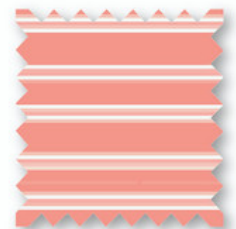
WISTERIA PURPLE



WINDWARD BLUE



SMOKE GREEN

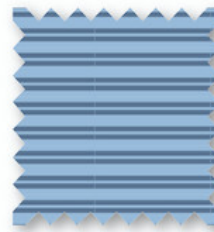


DESERT FLOWER CORAL

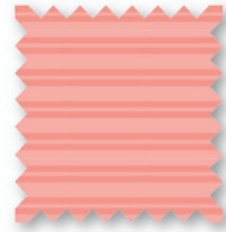
# DRIVER BAYWOODS STRIPE POLO | 3/25



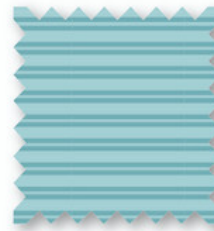
10622 Self collar | 3 button placket | Droptail hem | Internal collar stays in collar | Branded IMOP buttons | Outline Skipjack heat seal on back neck | 94% Recycled Poly 6% Spandex | S-XXL | 98004214



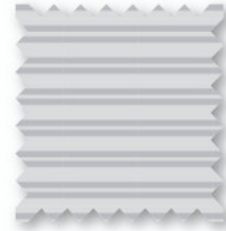
CLEARWATER BLUE



APRICOT BLUSH CORAL



WAKE BLUE



PLATINUM GREY

# DRIVER THAT FLORAL FEELING PRINTED POLO | 3/25



10719 Self collar | 3 button placket | Droptail hem | Internal collar stays in collar | Branded IMOP buttons | Outline Skipjack heat seal on back neck | 94% Recycled Poly 6% Spandex | S-XXL | 98004214



DRIVER IS RECYCLED POLY! and ONE OF OUR TOP SELLING STYLES!



WAKE BLUE

# DRIVER CAPS OFF PRINTED POLO | 3/25



**10720** Self collar | 3 button placket | Droptail hem | Internal collar stays in collar | Branded IMOP buttons | Outline Skipjack heat seal on back neck | 94% Recycled Poly 6% Spandex | S-XXL | 98004214



**DRIVER IS RECYCLED POLY! and ONE OF OUR TOP SELLING STYLES!**

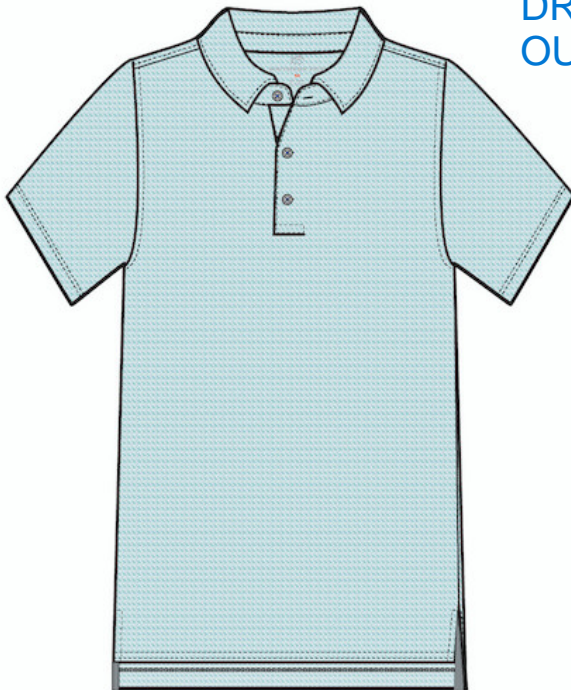


DESERT FLOWER  
CORAL

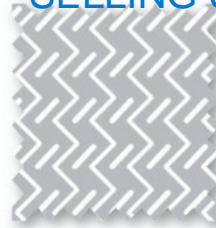
# DRIVER GETTING ZIGGY WITH IT POLO | 3/25



**10721** Self collar | 3 button placket | Droptail hem | Internal collar stays in collar | Branded IMOP buttons | Outline Skipjack heat seal on back neck | 94% Recycled Poly 6% Spandex | S-XXL | 98004214



**DRIVER IS RECYCLED POLY! and ONE OF OUR TOP SELLING STYLES!**



PLATINUM GREY



CORONET BLUE



APRICOT BLUSH  
CORAL

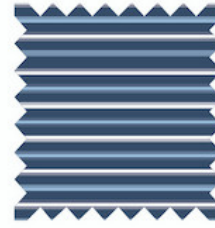


WAKE BLUE

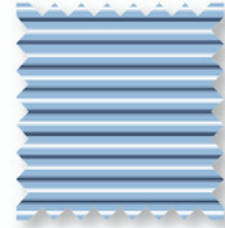
# brrr° eeze BAYTOP STRIPE PERFORMANCE POLO | 3/25



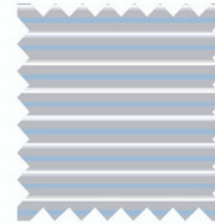
**10623** Self collar | 3 button placket | Droptail hem | Internal collar stays in collar | Branded IMOP buttons | Outline Skipjack heat seal on back neck | 83% brrr° Nylon 17% Spandex | S-XXL | 108004860



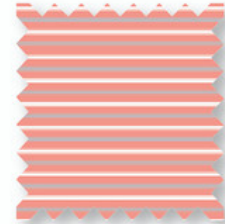
AGED DENIM



CLEARWATER BLUE



PLATINUM GREY



DESERT FLOWER  
CORAL

# WOMEN'S GOLF

Calie Pop Placket Popover | 12/25



**9837 (Stripe)** Long sleeve | Partial lining | Pockets | Two-piece hood w/ self-drawstring | Contrast stripe inner hood and placket | Snap closure on placket | Welt pockets | Elastic sleeve hem | Front and back yoke | Interior locker loop caught in CB neck tape | Bottom hem pull adjustment with DTM grommets, barrel, and bungee cord | Active Skipjack reflective heat transfer centered above back yoke | Stretch | UV protection | Wicking | Anti-microbial | 92% Nylon 8% Spandex | XS-XL | 138006200

Kristy Performance Tank | 1/25



**10745** Rib Collar w/tipping | Invisible zipper closure at CF | Rib Trim at armhole | Front princess seam with coverstitching | Active Skipjack Reflective Heat Transfer at CB neck | Racerback | Stretch | UV protection | Wicking | Cooling | 75% Nylon 25% Spandex | XS-XL | 88003900

Elaina Golf Skort | 12/25



**10764** 17" length | Elastic WB | On-seam pockets | Contrast binding around hem, side seam, and waistband | Dolphin hem | Cooling knit interior short | Active Skipjack reflective heat transfer at left skirt hem | NEW gripper elastic at short leg opening | Stretch | UV protection | Wicking | Anti-microbial | 92% Nylon 8% Spandex | XS-XL | 88004000



DRESS BLUE  
(10745)







STRIPE  
(9837)



CLASSIC WHITE  
(10764)

*Inlet Short* | 12/25 

**9026** 4" inseam | Stretch | Hook and bar closure | Coil zip fly | Side slash pockets | Self pocket bags | Welt pocket at wearer's back right | Side slit detail | Outline Skipjack embroidery above back welt pocket | 95% Nylon 5% Spandex | Sizes 00-14 | 79503600

*CCC Runaround 1/4 Zip* | 1/25    

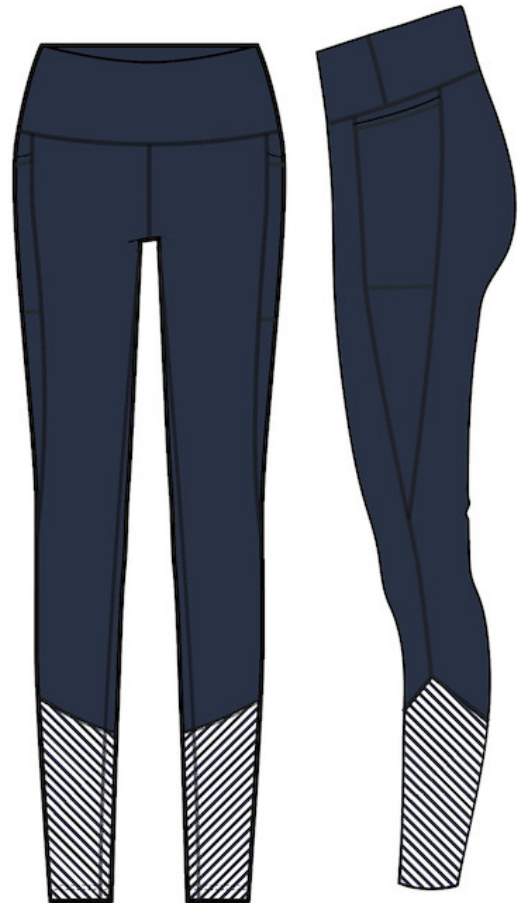
**10548** Stretch | Moisture wicking | UPF protection | Coil zipper | Branded zipper extender | Striped interior collar | Thumb holes in cuffs | Slight hi-lo hem | Contrast bartacks | Reflective Skipjack heatseal at center back | 91% Nylon / 9% Spandex | Sizes XS - XL | Retail \$118.00, Embroidered \$128.00

*Lexi Legging* | 12/25

**10301** Skipjack reflective heatseal at center back waistband | 7/8 length legging | High waisted | Side pockets | Colorblock stripe panel at bottom hem | Flatlock seams | Power mesh waistband | 75% Nylon 25% Spandex | XS-XL | 108004800



NAUTICAL NAVY  
(10548)



NAUTICAL NAVY  
(10301)



NAUTICAL NAVY  
(9026)

# Calie Pop Placket Popover | 12/25



**10744** Long sleeve | Partial lining | Pockets | Two-piece hood w/ self-drawstring | Contrast stripe inner hood and placket | Snap closure on placket | Welt pockets | Elastic sleeve hem | Front and back yoke | Interior locker loop caught in CB neck tape | Bottom hem pull adjustment with DTM grommets, barrel, and bungee cord | Active Skipjack reflective heat transfer centered above back yoke | Stretch | UV protection | Wicking | Anti-microbial | 92% Nylon 8% Spandex | XS-XL | 138006200

# Elaina Golf Skort | 12/25



**10764** 17" length | Elastic WB | On-seam pockets | Contrast binding around hem, side seam, and waistband | Dolphin hem | Cooling knit interior short | Active Skipjack reflective heat transfer at left skirt hem | NEW gripper elastic at short leg opening | Stretch | UV protection | Wicking | Anti-microbial | 92% Nylon 8% Spandex | XS-XL | 88004000

# Kristy Performance Tank | 1/25



**10745** Rib Collar w/tipping | Invisible zipper closure at CF | Rib Trim at armhole | Front princess seam with coverstitching | Active Skipjack Reflective Heat Transfer at CB neck | Racerback | Stretch | UV protection | Wicking | Cooling | 75% Nylon 25% Spandex | XS-XL | 88003900

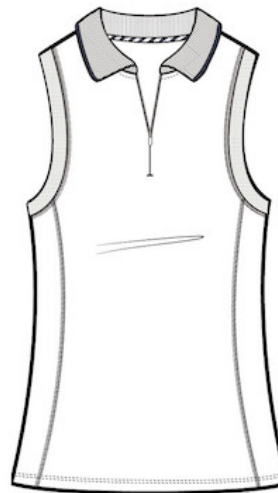
# Inlet Short | 12/25



**9026** 4" inseam | Stretch | Hook and bar closure | Coil zip fly | Side slash pockets | Self pocket bags | Welt pocket at wearer's back right | Side slit detail | Outline Skipjack embroidery above back welt pocket | 95% Nylon 5% Spandex | Sizes 00-14 | 79503600



DRESS BLUE  
(10744)



CLASSIC WHITE  
(10745)



DRESS BLUE  
(10764)



STONE  
(9026)





10745 | Kristy Performance Tank  
10764 | Elaina Golf Skort  
10805 | ST Print Performance Visor

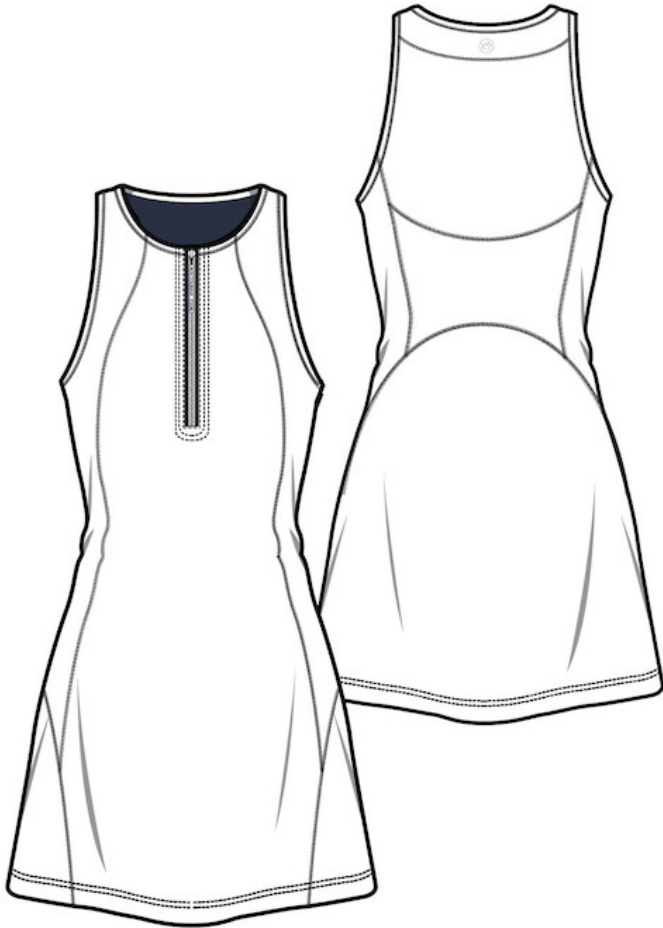


10748 | Frances Zip Front Performance Dress

# Frances Zip Front Performance Dress | 1/25



10748 Sleeveless | 32 1/2 inseam | Princess seams at front and back | Pop color CF exposed zipper w/ branded rubber pull extension | Active Skipjack reflective heat transfer at CB | Stretch | UV protection | Wicking | Cooling | 75% Nylon 25% Spandex | XS-XL | 148006600



CLASSIC WHITE



DRESS BLUE

Gwen Pleated Performance Skort | 1/25 

**10746** 14" skort length | Pocket in under short | Power mesh in WB | Interior short with NEW gripper elastic at leg openings | Active Skipjack reflective heat transfer at CB waistband | Stretch | UV protection | Wicking | Cooling | 75% Nylon 25% Spandex | XS-XL | 98004400

Lacy brrr'illiant Twist Top | 1/25 

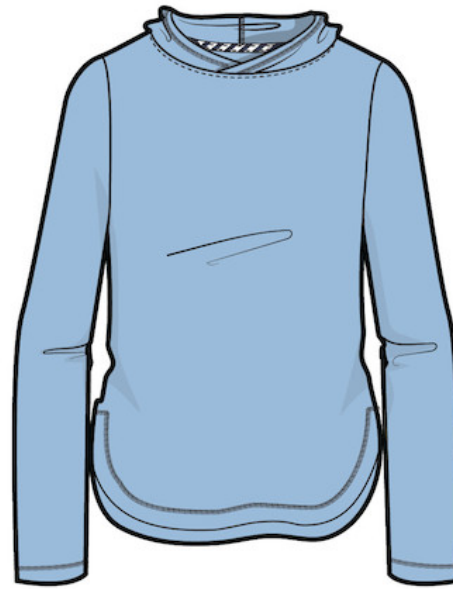
**11182 | 10741** Sleeveless | Crossover knot at hem | Stripe elastic back neck tape | Active Skipjack reflective heat transfer at CB | Stretch | UV protection | Wicking | Quick dry | brrr° Cooling | 46% brrr Polyester, 46% Polyester, 8% Spandex | XS-XL | 78003500

Linley brrr'illiant Performance Hoodie | 1/25 

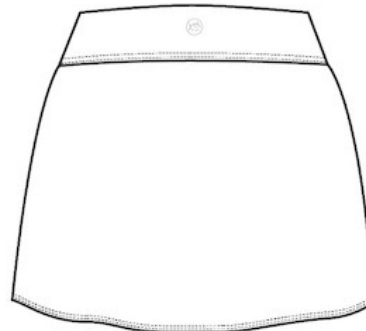
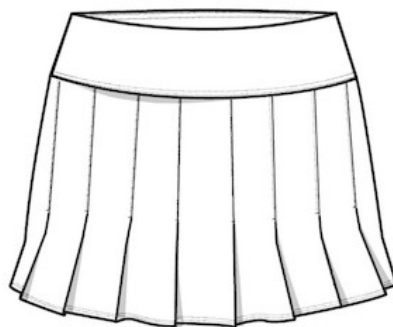
**11184 | 10326** Long sleeve | Two-piece crossover hood | Curved shirttail hem | Stripe elastic back neck tape | Active Skipjack reflective heat transfer at CB | Stretch | UV protection | Wicking | Quick dry | brrr° cooling | 46% brrr Polyester, 46% Polyester, 8% Spandex | XS-XL | 95004275



NAUTICAL NAVY  
(10741)




CLEARWATER BLUE  
(10326)



CLASSIC WHITE  
(10746)

*Josette Mixed Media Full Zip* | 12/25 

8809 Stretch | Quick dry | Lightly filled quilted woven front | Full zip | On seam front pockets | ST branded flat matte zipper pull | Reflective Skipjack coin heat transfer at center back neck | 77.5% Polyester / 22.5% Spandex | Sizes XS - XL | 148006800

*Linley brilliant Performance Hoodie* | 1/25 

11184 | 10326 Long sleeve | Two-piece crossover hood | Curved shirrtail hem | Stripe elastic back neck tape | Active Skipjack reflective heat transfer at CB | Stretch | UV protection | Wicking | Quick dry | brrr° cooling | 46% brrr Polyester, 46% Polyester, 8% Spandex | XS-XL | 95004275

*Shawna Mixed Media Vest* | 12/25 

10056 Quick dry w/moisture management | Rounded hand pockets | Skipjack reflective heat seal on CB neck | CF zipper with ST branded zipper pull | 83% Nylon 17% Spandex | Sizes XS-XL | 148006800



NAUTICAL NAVY  
(10326)



TRUE NAVY  
(8809)



NAUTICAL NAVY  
(10326)

# Linley brilliant Performance Hoodie | 1/25



**11184 | 10326** Long sleeve | Two-piece crossover hood | Curved shirttail hem | Stripe elastic back neck tape | Active Skipjack reflective heat transfer at CB | Stretch | UV protection | Wicking | Quick dry | brrr° cooling | 46% brrr Polyester, 46% Polyester, 8% Spandex | XS-XL | 95004275

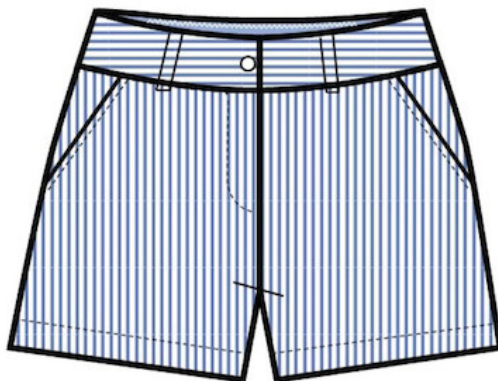
# Leah Short | 12/25



**3847** 3" Inseam | Stretch fabric | Faux horn logo-etched button | Blue oxford interior waistband | Outline Skipjack ST embroidery above back right pocket | Extra deep pockets | 98% Cotton | 2% Spandex | Leah Sizes 00-10 | Caroline Sizes 0-14 | 75003400



CLASSIC WHITE  
(11184)



BOAT BLUE  
(3847)

# Malia Racerback Tank | 12/25



**10013** Sleeveless | Scoop neck | Skipjack reflective heat seal on center back neck | Stretch | UV protection | Wicking | 91% Nylon 9% Spandex | XS – XL | 68003000

# Lacy brrr'illiant Twist Top | 1/25

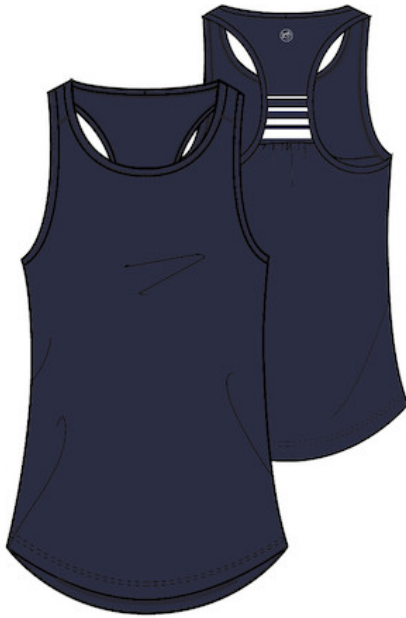


**11182 | 10741** Sleeveless | Crossover knot at hem | Stripe elastic back neck tape | Active Skipjack reflective heat transfer at CB | Stretch | UV protection | Wicking | Quick dry | brrr° Cooling | 46% brrr Polyester, 46% Polyester, 8% Spandex | XS-XL | 78003500

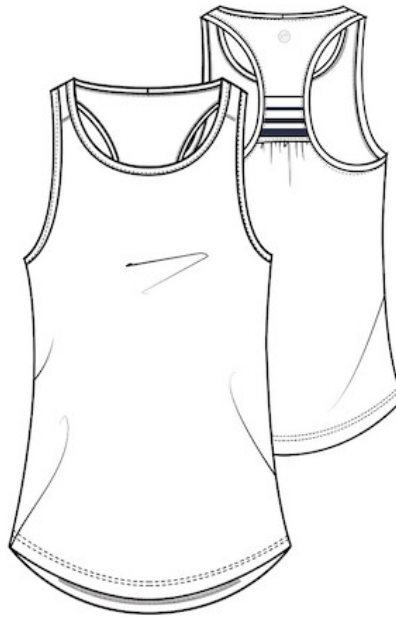
# Sammie Intercoastal Perf Short | 12/25



**10749** 4" inseam | Elastic WB with drawcord | Slanted pockets | Side vent at bottom hem | Back welt pocket with invisible zip | Self fabric pocket bags | Active Skipjack reflective heat transfer at left short hem | Stretch | UV protection | Wicking | Anti-microbial | 92% Nylon 8% Spandex | XS-XL | 88003900



NAUTICAL NAVY  
(10013)



CLASSIC WHITE  
(10013)



CLEARWATER BLUE  
(10741)



DRESS BLUE  
(10749)

# Kamryn brrr Intercoastal Gingham Dress | 12/25

10007 Dress length: 36" | Quick Dry | Stretch | UV Protection | Wicking | Cooling | Breathable Fabric | Front slit pockets | Back placket | Cuffed sleeve with snap tab | 91% Nylon 9% Spandex | Sizes XS-XL | 148006800



SKY BLUE



NAUTICAL NAVY

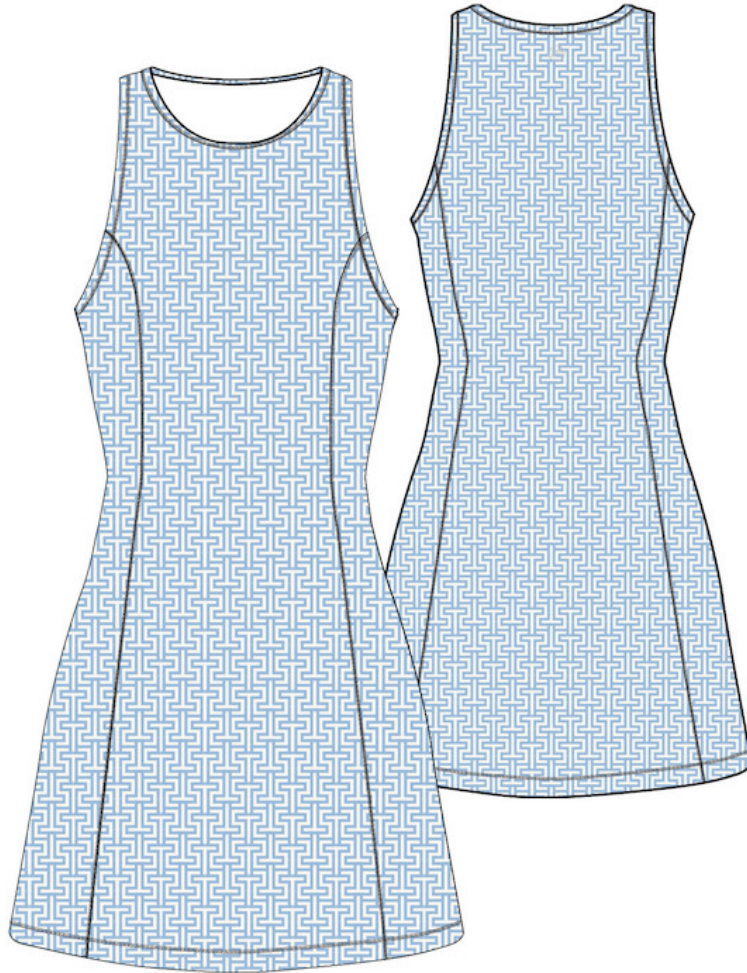


# Lyllee Performance Dress

1/25



10826 | 10827(stripe) Princess seams at front and back | Active Skipjack reflective heat transfer at CB | Self-interior neck tape | Stretch | UV protection | Wicking | Cooling | 75% Nylon 25% Spandex | XS-XL | 148006600



CLASSIC WHITE  
(10826)



CLASSIC WHITE  
(10827)

Myra Stripe Racerback Tank | 1/25



10829 Sleeveless | Chevron stripe at side panel | Active Skipjack reflective heat transfer at CB | Interior neck facing | Stretch | UV protection | Wicking | Cooling | 75% Nylon 25% Spandex | XS-XL | 78003500

Sammie Intercoastal Perf Short | 12/25



10749 4" inseam | Elastic WB with drawcord | Slanted pockets | Side vent at bottom hem | Back welt pocket with invisible zip | Self fabric pocket bags | Active Skipjack reflective heat transfer at left short hem | Stretch | UV protection | Wicking | Anti-microbial | 92% Nylon 8% Spandex | XS-XL | 88003900



CLASSIC WHITE  
(10829)



CONCH SHELL  
(10749)

Katlyn Skort | 1/25 

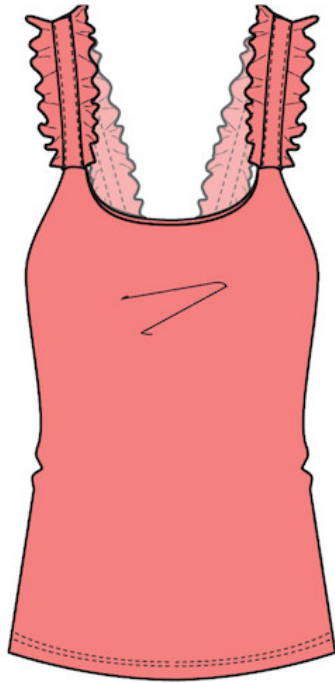
10768 | ~~10771~~ 14" skort length | Pocket in under short | Power mesh waistband | Interior short with NEW gripper elastic at leg openings | Active Skipjack Reflective Heat Transfer at CB | Stretch | UV protection | Wicking | Cooling | 75% Nylon 25% Spandex | XS-XL | 98004400

Staci Active Ruffle Tank | 1/25 

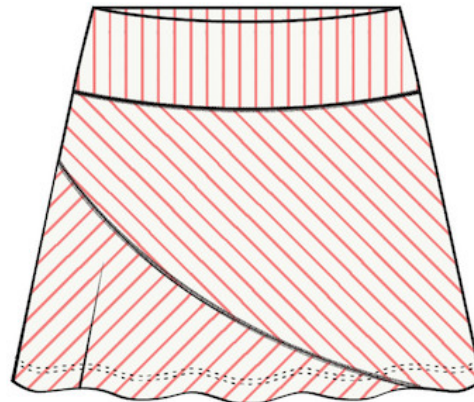
10743 | 11196 Sleeveless | Built-in bra with removable cups | Ruffle shoulder straps | Active Skipjack reflective heat transfer at CB neck | Stretch | UV protection | Wicking | Cooling | 75% Nylon 25% Spandex | XS-XL | 88004000

St Print Performance Visor | 1/25

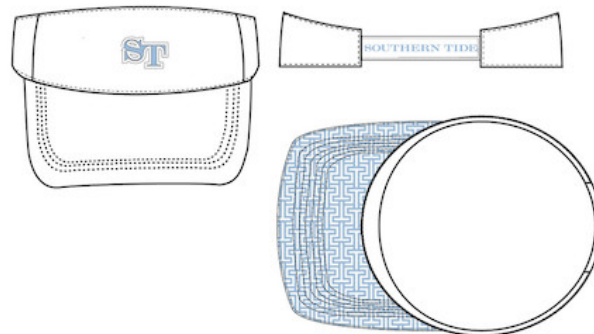
10805 97% Polyester 3% Spandex | One Size | 29001300



CONCH SHELL  
(10743)



CLASSIC WHITE  
(10771)



(10805)



11196 | Staci Active Ruffle Tank  
10768 | Katlyn Skort

# Katlyn Skort | 1/25



10768 | ~~10771~~ 14" skort length | Pocket in under short | Power mesh waistband | Interior short with NEW gripper elastic at leg openings | Active Skipjack Reflective Heat Transfer at CB | Stretch | UV protection | Wicking | Cooling | 75% Nylon 25% Spandex | XS-XL | 98004400

# Staci Active Ruffle Tank | 1/25



10743 | 11196 Sleeveless | Built-in bra with removable cups | Ruffle shoulder straps | Active Skipjack reflective heat transfer at CB neck | Stretch | UV protection | Wicking | Cooling | 75% Nylon 25% Spandex | XS-XL | 88004000

# Lacy brrrilliant Twist Top | 1/25

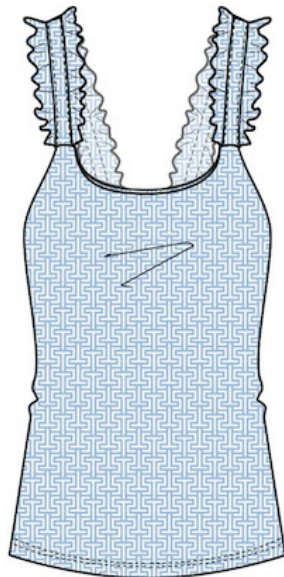


11182 | 10741 Sleeveless | Crossover knot at hem | Stripe elastic back neck tape | Active Skipjack reflective heat transfer at CB | Stretch | UV protection | Wicking | Quick dry | brrr° Cooling | 46% brrr Polyester, 46% Polyester, 8% Spandex | XS-XL | 78003500

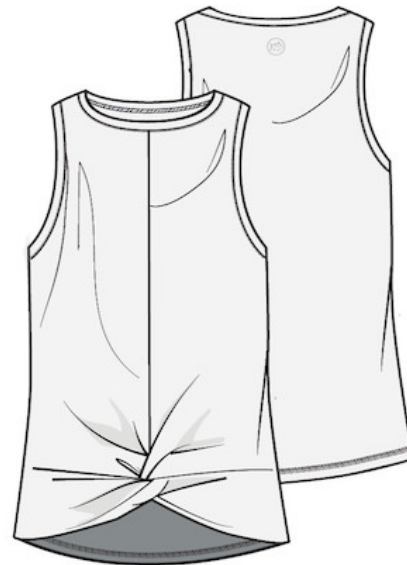
# Sammie Intercoastal Perf Short | 12/25



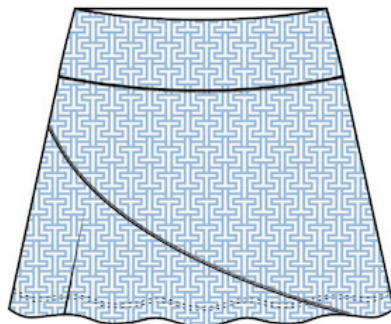
10749 4" inseam | Elastic WB with drawcord | Slanted pockets | Side vent at bottom hem | Back welt pocket with invisible zip | Self fabric pocket bags | Active Skipjack reflective heat transfer at left short hem | Stretch | UV protection | Wicking | Anti-microbial | 92% Nylon 8% Spandex | XS-XL | 88003900



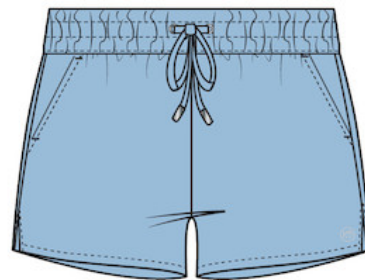
CLEARWATER BLUE  
(11196)



CLASSIC WHITE  
(11182)



CLASSIC WHITE  
(10768)



CLEARWATER BLUE  
(10749)

Staci Active Ruffle Tank | 1/25 

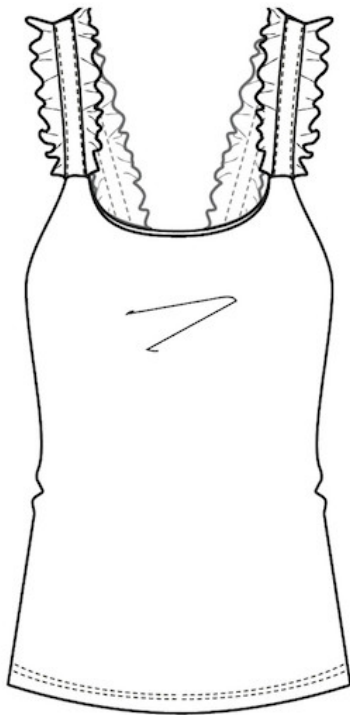
10743 Sleeveless | Built-in bra with removable cups | Ruffle shoulder straps | Active Skipjack reflective heat transfer at CB neck | Stretch | UV protection | Wicking | Cooling | 75% Nylon 25% Spandex | XS-XL | 88004000

Katlyn Skort | 12/25 

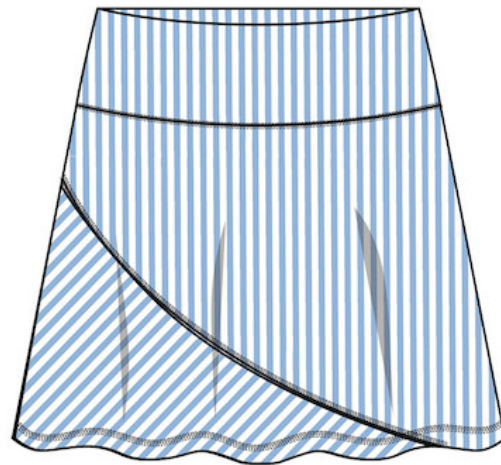
10223 Stretch | UV protection | Gripper elastic at leg opening | Skipjack reflective heat seal on CB waistband | Interior short | Pocket on wearer's left interior short | 14" length | 91% Nylon / 9% Spandex | XS-XL | 98004400

Game, Set, Match Leather Strap Flat | 1/25

10694 100% Cotton | One Size | 35001550



CLASSIC WHITE  
(10743)



SKY BLUE  
(10223)



(10694)

# Kamryn brrr Intercoastal Stripe Dress | 12/25



9786 Dress length: 36" | Short sleeve | Knee length | Split neck & collar | Quick dry | Stretch | UV protection | Wicking | Cooling | Breathable fabric | Front welt pockets | 91% Nylon 9% Spandex | Sizes XS-XL | 148006800



COBALT BLUE

# CCC Runaround 1/4 Zip | 1/25



**10548** Stretch | Moisture wicking | UPF protection | Coil zipper | Branded zipper extender | Striped interior collar | Thumb holes in cuffs | Slight hi-lo hem | Contrast bartacks | Reflective Skipjack heatseal at center back | 91% Nylon / 9% Spandex | Sizes XS - XL | Retail \$118.00, Embroidered \$128.00

# Inlet Short | 12/25



**9026** 4" inseam | Stretch | Hook and bar closure | Coil zip fly | Side slash pockets | Self pocket bags | Welt pocket at wearer's back right | Side slit detail | Outline Skipjack embroidery above back welt pocket | 95% Nylon 5% Spandex | Sizes 00-14 | 79503600

# Runaround 1/4 Zip | 1/25



**10305** Reverse coil zipper with skipjack zipper puller | Elastic back neck tape | 75% Nylon 25% Spandex | Sizes XS-XL | 118005300



CLASSIC WHITE  
(10305)



CAVIAR BLACK  
(10548)



BLACK  
(9026)



# Shawna Mixed Media Vest | 1/25

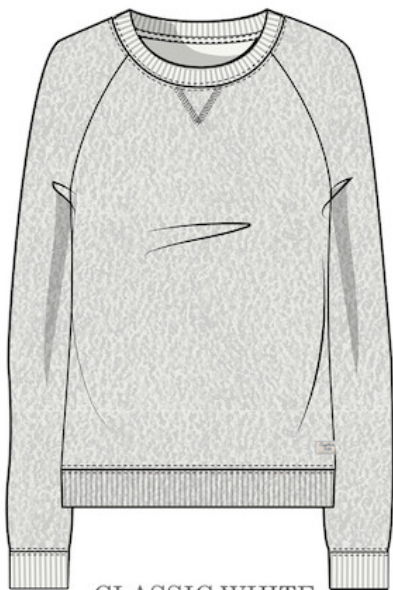
**10056** Quick dry w/moisture management | Rounded hand pockets | Skipjack reflective heat seal on CB neck | CF zipper with ST branded zipper pull | 83% Nylon 17% Spandex | Sizes XS-XL | 148006800



MIDNIGHT BLACK  
(10056)

# Seaside Retreat Sweatshirt | 1/25

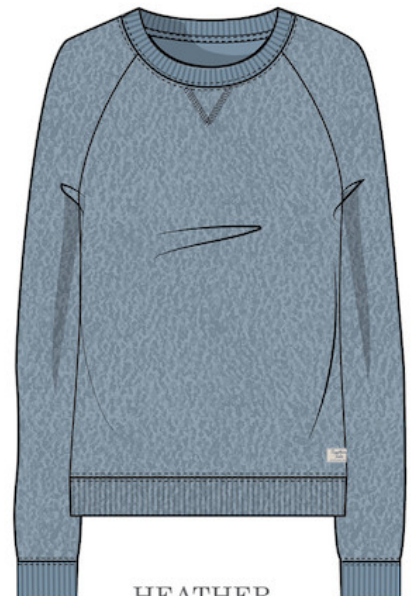
**10555 | 10537** Fleece with rib collar, cuffs and hem | 48% Polyester 40% Cotton 12% Rayon | Sizes XS-XL | 98004400



CLASSIC WHITE  
(10555)



HEATHER  
DUSTY CORAL  
(10537)



HEATHER  
MOUNTAIN  
SPRING BLUE  
(10537)

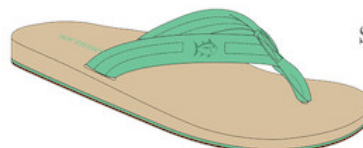
# Weekend Flipjacks | 12/25

---

**7840** Boat-ready, non-marking soles | Premium quality leather uppers | Nylon web toe post | Tonal Skipjack embroidery on thong | 93% Leather 7% Textile (Upper & Lining) 100% Rubber (Outsole) | Sizes 5-11 | 59502700



SEASHORE



STARBOARD



CONCH SHELL



NAUTICAL NAVY

# Metallic Flipjacks | 12/25

---

**4073** Boat-ready, non-marking soles | Premium quality leather uppers | Nylon web toe post | Tonal Skipjack embroidery on thong | 93% Leather 7% Textile (Upper & Lining) 100% Rubber (Outsole) | Sizes 5-11 | 59502500



METALLIC GOLD



METALLIC SILVER

# Southern Tide Coral Fragrance | 12/25

---

**9542 (3.4fl oz) | 9543 (0.5fl oz)** A clean, transparent floral scent inspired by summer sunsets. Top notes: white tea, lemon, grapefruit | Middle 9542 (3.4fl oz) | 9543 (0.5fl oz) A clean, transparent floral scent inspired by summer sunsets. Top notes: white tea, lemon, grapefruit | Middle notes: cyclamen, waterlily, rose petals | Base notes: musk, amber | 20001000 (0.5 fl oz) & 80004000 (2.4 fl oz)



(9543)

(9542)



**SOUTHERN TIDE**

[orders@southerntide.com](mailto:orders@southerntide.com) | [app.repspark.com/stide](http://app.repspark.com/stide)