

SOUTHERN TIDE

SPRING

2023



ABOUT SOUTHERN TIDE

Founded in 2006, Greenville, S.C.-based Southern Tide is a coastal lifestyle apparel brand that embodies a Southern state of mind and adventurous spirit. Southern Tide is best known for its Skipjack Polo, deemed by many to be the most comfortable premium polo shirt. Innovative, yet timeless in its youthful style, Southern Tide offers an array of apparel and accessory products for men, women, and kids that deliver their authentic lifestyle through quality, experience, and service.

WE ARE:

SOUTHERN | COASTAL | PREMIUM | ENERGETIC | AUTHENTIC | STORYTELLERS | EXPERIENTIAL

SCAN

for our imagery
and other fun
Marketing assets!



CATALOG CONTENTS

WOMEN'S	4
MENS 12/25	19
MENS 1/25	30
MENS 2/25	43
MENS 3/25	49
MENS 4/25	54
YOUTH	58

SPRING '23 INSPIRATION

It's the one thing that comes around every week regardless of the circumstances. It's usually the thing people look forward to most and that typically sparks a sense of excitement, joy, adventure, or relaxation. The weekend. That blessed time off from obligations and work and moments to spend on yourself, your family, friends, pets, home, or hobbies. Southern Tide is the weekend of all brands. We aspire to be the brand everyone is excited to wear and look forward to putting on. We don't want to be your average Monday-Thursday, 9-5 that lacks joy and energy. The clothing you must wear because of the place of your employment. No, we want to inspire everyone to live every day like that weekend feeling: energetic, optimistic, casual, but ready for any adventure life throws our way!

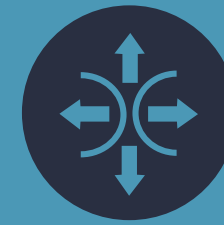
ICONS KEY



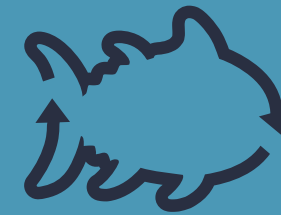
QUICK-DRY FABRIC WITH
MOISTURE MANAGEMENT



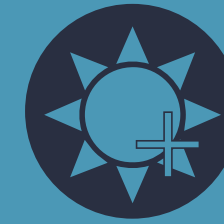
PRODUCT IS A KEY ITEM



STRETCH FOR
ADDED MOBILITY



RECYCLED MATERIALS



UV PROTECTION



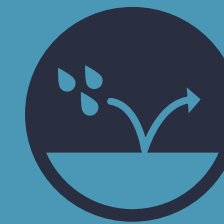
SOFT TOUCH



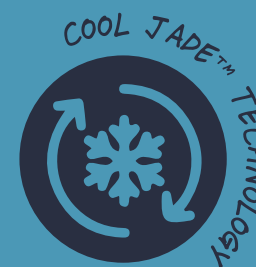
EXTRA SOFT AND LIGHT
WEIGHT HAND FEEL



ANTI-ODOR



WATER RESISTANT



JADE COOLING
TECHNOLOGY



BREATHABLE FABRIC



BRRR COOLING MATERIAL

ORDER FROM REPSARK: app.repspark.com/stide



CHECK INVENTORY AVAILABILITY 24/7



CHECK ORDER STATUS & TRACKING INFO



SHARE ORDER WITH OUTSIDE REP



BROWSE A CATALOG OR ALL PRODUCTS
WITHOUT ORDERING



ONLINE ASSISTANCE AVAILABLE



PLACE ORDERS ANYTIME



COPY SIZE RUNS FOR FASTER ORDERING



CREATE MULTIPLE SHIPMENT ORDERS



ACCESS TO DIGITAL ASSETS & POS SIGNAGE



CUSTOM ORDERING



DOWNLOAD PRODUCT UPCs



TOURNAMENT/EVENT PACKAGES

PERFORMANCE



CLASSICS

WOMEN'S

Malia Racerback Tank | 12/25   

10013 Sleeveless | Scoop neck | Quick dry w/moisture management | Stretch | UV protection | Skipjack reflective heat seal on wearer's left hem | 91% Nylon 9% Spandex | XS-XL | Retail \$68.00

Neeley brrr^o Performance Short | 12/25    

9897 3" Inseam | Quick dry w/moisture management | Stretch for added mobility | UV protection | brrr^o | On seam pockets | Grossgrain elastic drawcord with rubber coated ends | Non-roll elastic waistband | Outline Skipjack embroidery on wearer's left hem | 46% Polyester 40% brrr^o Polyester 14% Spandex | XS-XL | Retail \$95.00



CLASSIC WHITE
(10013)

NAUTICAL NAVY
(10013)



CLASSIC WHITE
(9897)



NAUTICAL NAVY
(9897)

Linley brrr^o illiant Performance hoodie | 12/25    

10326 Long sleeve | Active Skipjack reflective heat transfer | Quick dry w/moisture management | Stretch | UV protection | brrr^o cooling | 46% brrr^o Polyester 46% Polyester 8% Spandex | XS-XL | Retail \$95.00

Sydney Fligh Waisted Legging | 12/25  

10027 Fitted | 7/8 length | Quick dry w/moisture management | Stretch | Side panel pockets | Reflective Skipjack at CB | 75% Nylon 25% Spandex | XS-XL | Retail \$98.00



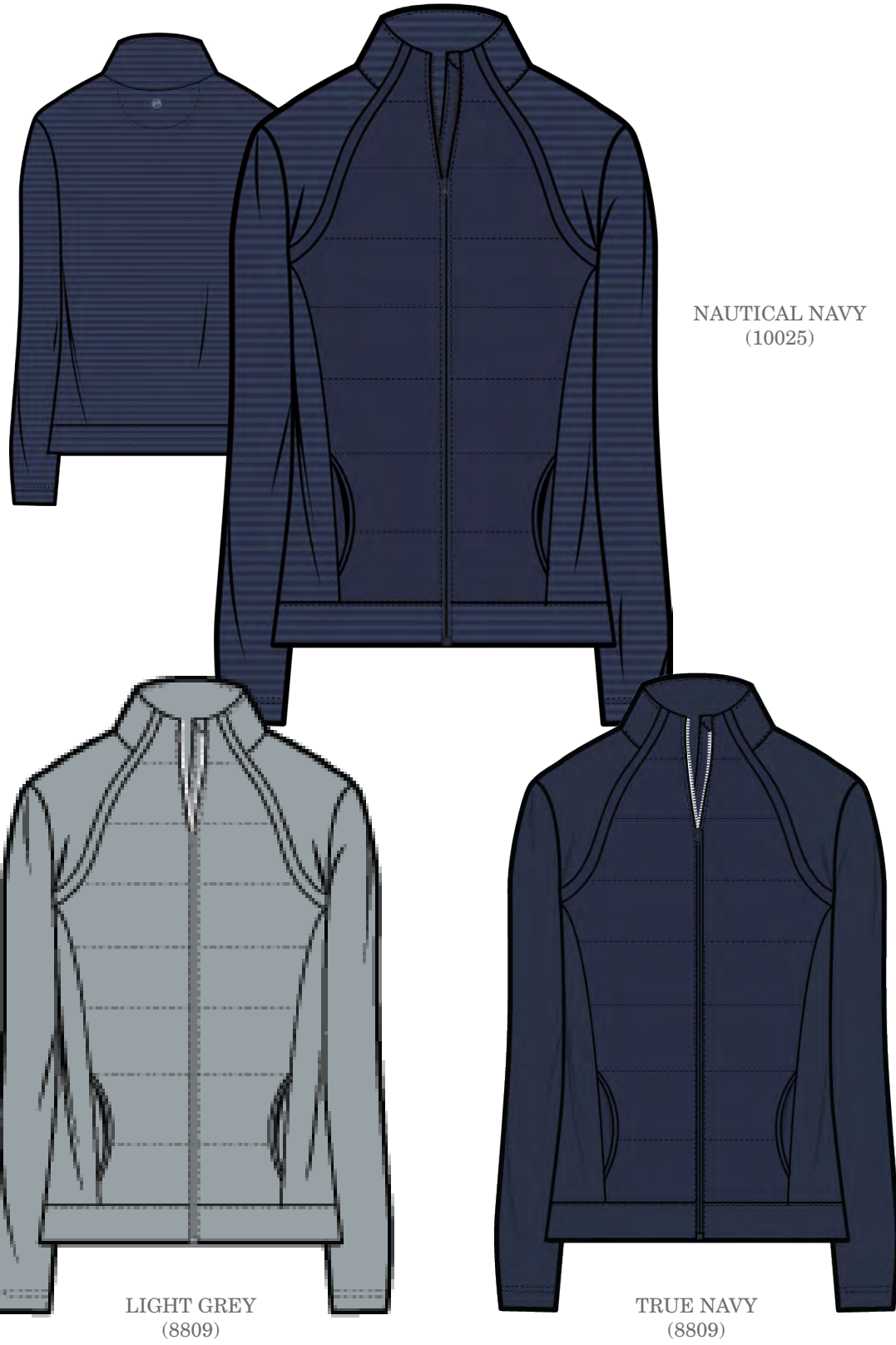
NAUTICAL NAVY
(10326)

PLATINUM GREY
(10326)

NAUTICAL NAVY
(10027)

Josette Mixed Media Full Zip | 12/25  

10025 | 8809 A more substantial active jacket featuring mixed media fabric.
 Stretch | Quick dry | Lightly filled quilted woven front | Knit stripe sleeves and back | Full zip | On seam front pockets | ST branded flat matte zipper pull | Reflective Skipjack coin heat transfer at center back neck | 83% Nylon 17% Spandex
 Sizes XS-XL | Retail \$148.00



Runaround Performance 1/4 Zip | 12/25  

9448 Throw this performance layer on for workouts or coffee runs.
 Stretch | Quick dry | Coil zipper pull | Branded zipper extender | Thumbholes in cuffs | Slight hi-lo hem | Reflective Skipjack coin heat transfer at center back neck | 83% Nylon 17% Spandex | Sizes XS-XL | Retail \$118.00



Kristy Performance Tank | 12/25   

10000 Sleeveless | ¼ zip | Quick dry w/moisture management | Stretch | UV protection | Invisible zipper front | Reflective Skipjack on CB neck | 91% Nylon 9% Spandex | XS-XL | Retail \$88.00

Anika Pleated Performance Skort | 12/25   

10544 3 1/2" inseam | Stretch | Pocket on wearer's left interior short | Gripper elastic at leg opening | Reflective Skipjack on left hem | Front and back pleats | Interior short | 91% Nylon 9% Spandex | XS-XL | Retail \$98.00



NAUTICAL NAVY
(10000)

CLASSIC WHITE
(10000)



CLASSIC WHITE
(10544)



NAUTICAL NAVY
(10544)

Kamryn brrr Intercoastal Gingham Dress | 1/25    

10007 Stretch | Moisture wicking | Breathability | Front slit pockets | Back placket | Cuffed sleeve with snap tab | 91% Nylon 9% Spandex | Sizes XS-XL | Retail \$148.00



SKY BLUE

NAUTICAL NAVY

Kamryn brrr Intercoastal Stripe Dress | 12/25    

9786 Short sleeve | Knee length | Split neck & collar | Quick dry w/ moisture management | Stretch | UV protection | brrr° cooling | Breathable material | Front welt pockets | 91% Nylon 9% Spandex Sizes XS-XL | Retail \$148.00



COBALT BLUE

Kristy Performance Dress | 1/25   

9954 ¼ zip | Quick dry w/ moisture management | Stretch | UV protection | Patch pockets at side seam | Invisible zipper front | Back neck tape | Reflective heat seal at CB neck | Rib trim collar | Interior short | 4" inseam | Gripper elastic at leg opening | 91% Nylon 9% Spandex | XS-XL | Retail \$148.00



CLASSIC WHITE

NAUTICAL NAVY

Lisi Stripe Active Ruffle Tank | 1/25   

10011 Fitted | Sleeveless | Scoop neck | Quick dry w/moisture management | Stretch for added mobility | UV protection | Active Skipjack reflective heat transfer on CB neck | Ruffle shoulder straps | Interior bra | Removable cups | 91% Nylon 9% Spandex | XS-XL | Retail \$78.00

Aveiro Performance Skort | 1/25   

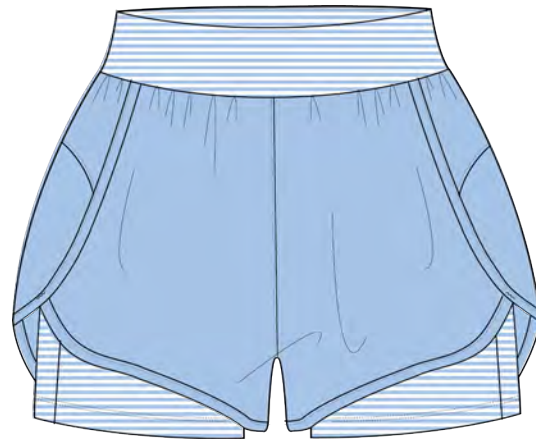
10099 Quick dry w/moisture management | Stretch | UV protection | Power mesh in waistbands | Side slit in skirt | Reflective Skipjack heatseal at CB waistband | Interior short | 3 1/2" Inseam | Gripper elastic at leg opening | Pocket on wearer's left interior short | 91% Nylon 9% Spandex | XS-XL | Retail \$88.00

Nonie Athletic Short | 1/25   

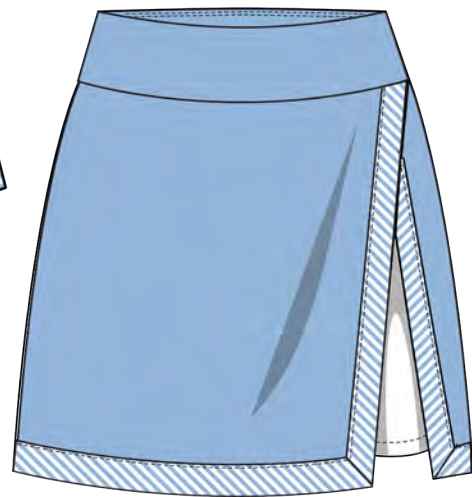
9162 Quick dry w/moisture management | Stretch for added mobility | UV protection | Breathable fabric | Reflective Skipjack heat seal on CB waistband | Knit under short | 4" inseam | Gripper elastic in knit under short | Pocket on wearer's right interior short | Contrast waistband | 86% Polyester 14% Spandex | XS-XL | Retail \$88.00



SKY BLUE
(10011)



SKY BLUE
(9162)



SKY BLUE
(10099)

Adie Performance Dress | 1/25   

10449 Stretch | Moisture wicking | UPF protection | 1/4 zip front | Mock neck | 3/4 length sleeve | Branded zipper pull | Contrast color zipper | Bust & back darts for shape | 91% Nylon 9% Spandex | XS-XL | Retail \$148.00



SKY BLUE

Lisi Stripe Ruffle Tank | 1/25   

10011 Fitted | Sleeveless | Scoop neck | Quick dry w/moisture management | Stretch for added mobility | UV protection | Active Skipjack reflective heat transfer on CB neck | Ruffle shoulder straps | Interior bra | Removable cups | 91% Nylon 9% Spandex | XS-XL | Retail \$78.00

Cora brrr'illiant Tie Back Tank | 1/25    

10010 Relaxed fit | Sleeveless | Crew | Quick dry w/moisture management | Stretch | UV protection | brrr° cooling | Cut out back | Wear straight or tied in back | 46% brrr° Polyester 46% Polyester 8% Spandex | XS-XL | Retail \$78.00

Aveiro Skip Stripe Performance Skort | 1/25   

9836 3 1/2" Inseam | Quick dry w/moisture management | Stretch | UV protection | Pocket on wearer's left interior short | Gripper elastic at leg opening | Power mesh in waistbands | Side slit in skirt | Reflective Skipjack heatseal at CB waistband | Interior short | 91% Nylon 9% Spandex | XS-XL | Retail \$88.00



NAUTICAL NAVY
(10011)



NAUTICAL NAVY
(10010)



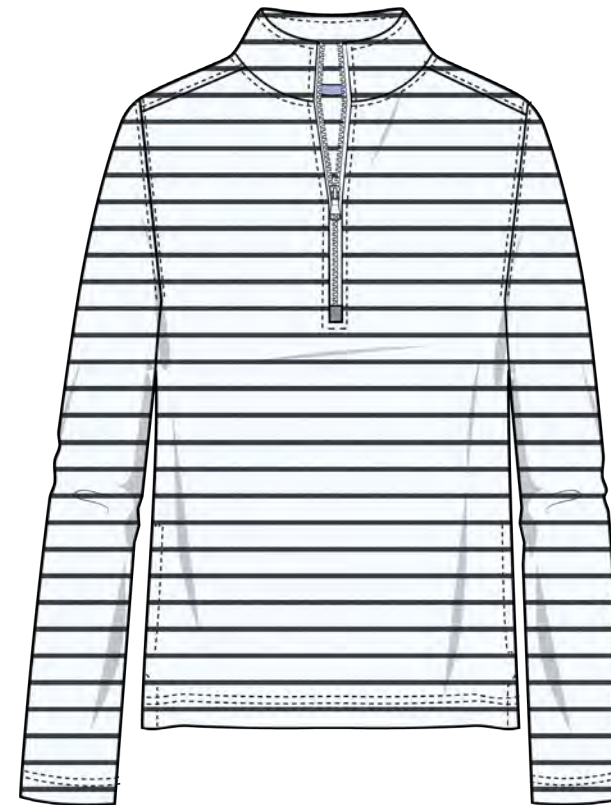
NAUTICAL NAVY
(9836)

Heather Tara 1/4 Zip | 1/25   

10059 Classic white ground with heather navy stripe | Long sleeve | 1/4 zip | Stretch | Side seam pockets | Herringbone tape at interior back neck and side vents | CF zipper | 57% Cotton 38% Polyester 5% Spandex | XS-XL | Retail \$118.00

Cora brrr'illiant Tie Back Tank | 1/25    

10010 Relaxed fit | Sleeveless | Crew | Quick dry w/moisture management | Stretch | UV protection | brrr° cooling | Cut out back | Wear straight or tied in back | 46% brrr° Polyester 46% Polyester 8% Spandex | XS-XL | Retail \$78.00



CLASSIC WHITE
(10059)



PLATINUM GREY
(10010)

Calie Popover | 2/25  

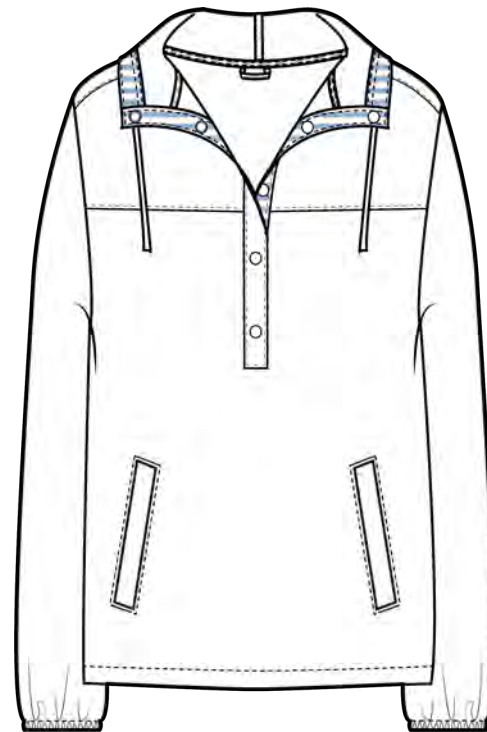
9838 | 9837 Quick dry | UV protection | Welt hand pockets | Plastic snaps on CF placket | Non roll elastic cuffs | Adjustable bungee cord hem | Active Skipjack reflective heat transfer on CB neck | Hooded | Locker loop at interior back neck | 92% Nylon 8% Spandex | XS-XL | Retail \$138.00

Kyle Skort | 2/25   

9855 3 1/2" inseam | Quick dry w/moisture management | Stretch | UV protection | Breathable fabric | Side seam pockets | Back right welt pocket | Non roll elastic waistband | Gripper elastic at leg opening | Active Skipjack reflective heat transfer on wearer's left hem | Grossgrain drawcord with branded metal ends | Interior short | 86% Polyester 14% Spandex | XS-XL | Retail \$88.00



NAUTICAL NAVY
(9838)



CLASSIC WHITE
(9837)



NAUTICAL NAVY
(9855)

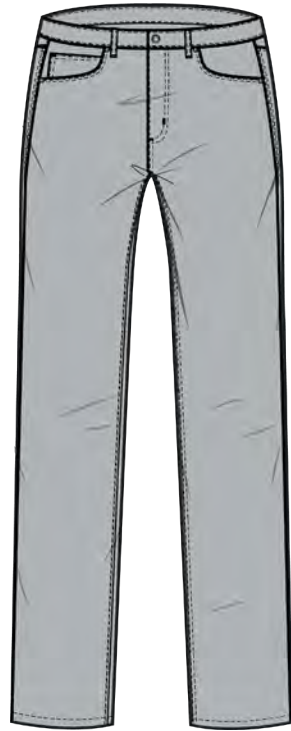
MENS

12/25

INTERCOASTAL PANT | 12/25



4115 Trim fit | Outline Skipjack embroidery on 5th pocket | Boat rope binding at interior back waistband | Antique nickel metal zipper with Southern Tide shank button | Grey camo pocket bags | Moisture control | UV Protection | 97% Nylon / 3% Spandex | Refer to size chart below | Retail \$135.00



L/W	28	30	31	32	33	34	35	36	37	38	40	42
30												
32												
34												

THE EXCURSION PERFORMANCE JOGGER | 12/25



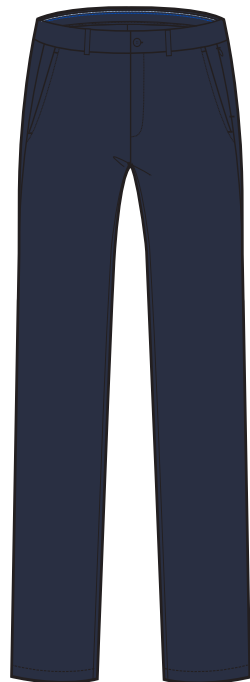
9371 Skipjack reflective heat seal above right back pocket | Slanted hand pockets with performance jersey pocketing | Elastic waistband with two-toned drawcord with branded tip | Self fold over cuffs | Back zippered welt pocket on wearer's right side | Stretch | 86% Polyester / 14% Spandex | Sizes S-XXL | Retail \$135.00



JACK PERFORMANCE PANT | 12/25



8125 Classic fit | Outline Skipjack embroidery | Set-on waistband | 2-tone blue stitching on interior waistband | Knit pocket bags | Slanted hand pockets | Snap welt back pockets | Hidden on seam zipper pocket | Button and zipper fly with metal pull | Matte branded button | Moisture wicking | 4-way stretch | UV Protection | 100% Polyester | Refer to size chart below | Retail \$135.00

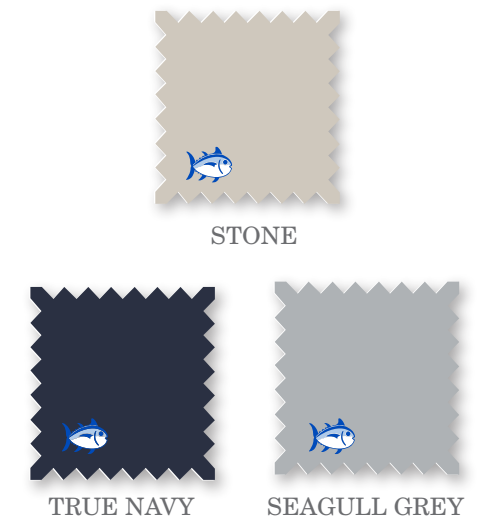


L/W	28	30	31	32	33	34	35	36	37	38	40	42
30												
32												
34												

T3 GULF SHORT | 12/25



4744 9" inseam | Outline Skipjack embroidery above right hand back pocket | T3 heat transfer main label at back interior waistband | Coil zipper with rubber coated Skipjack button closure | Mesh pocketing | One button closure back pocket on left, other is open 2" self-fabric on bottom of front pocket for extra security | 4-way stretch | Quick dry | Moisture wicking | 56% Cotton / 36% Polyester / 8% Spandex | See size chart below | Retail \$89.50



L/W	28	30	31	32	33	34	35	36	37	38	40	42
9"												

BRRR-DIE GULF SHORT | 12/25

7769 8" inseam | Outline Skipjack embroidery | Logo elastic interior waistband | Center front button and zipper fly | Rubber branded buttons | Rubber auto-lock pull | Set-on waistband | Slanted hand pockets | Wearer's left button welt back pocket | Wearer's right open welt back pocket | brrr° cooling | Moisture wicking | 4-way stretch | UV Protection | 85% brrr° Nylon / 15% Spandex | Refer to size chart below | Retail \$99.50



L/W	28	30	31	32	33	34	35	36	37	38	40	42
8"												

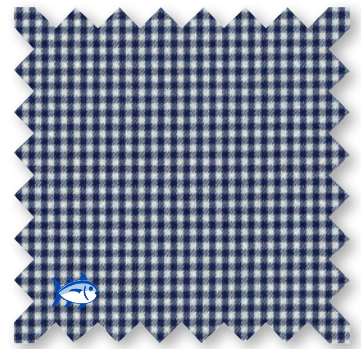


INTERCOASTAL SPORT SHIRTS | 12/25

Sizes S-XXL (*3X noted) | Outline Skipjack embroidery on pocket | Button down collar | Sleeve placket with 2-button adjustable cuff | Eyelets under arm | Quick dry | Moisture wicking | UV Protection | Anti-Microbial | Stretch

MICRO-GINGHAM

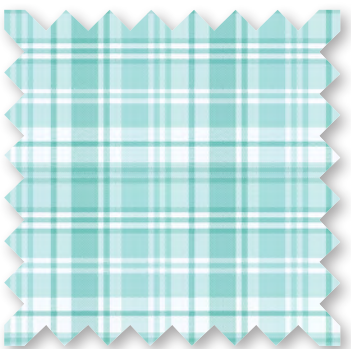
5348 CLASSIC
91% Nylon/9% Spandex | Tonal Skipjack embroidery | Retail \$125.00



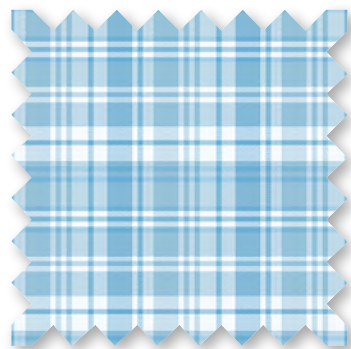
TRUE NAVY

PALM CANYON PLAID

9648 CLASSIC
Outline embroidery | 91% Nylon / 9% Spandex | Retail \$135.00



BALTIC TEAL



RAIN WATER

INTERCOASTAL SPORT SHIRTS | 12/25

Sizes S-XXL (*3X noted)

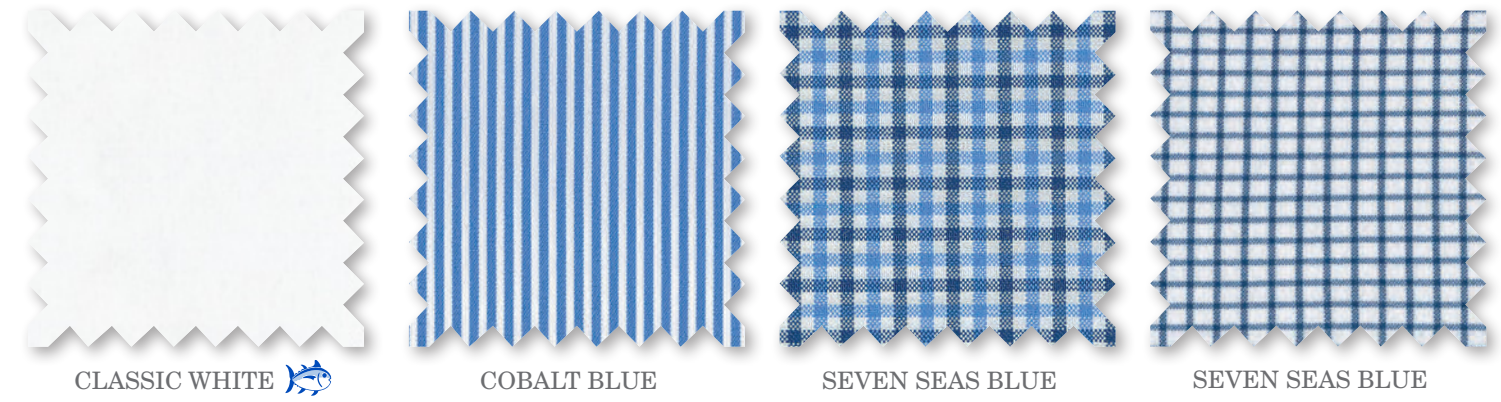


BRRR° SOLID INTERCOASTAL
8546 CLASSIC
91% Nylon / 9% Spandex (with brrr° technology) | Retail \$145.00

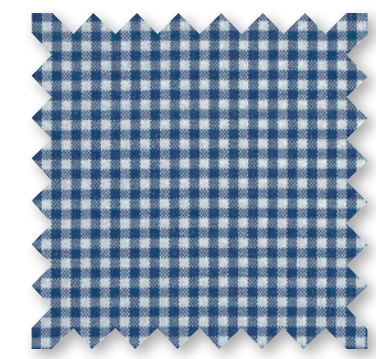
BRRR° BENGAL STRIPE
7861 CLASSIC
Outline Skipjack embroidery | 91% Nylon / 9% Spandex (with brrr° technology) | Retail \$145.00

BRRR° BOWRY
7858 CLASSIC
Outline Skipjack embroidery | 91% Nylon / 9% Spandex (w/brrr° technology) | Retail \$145.00

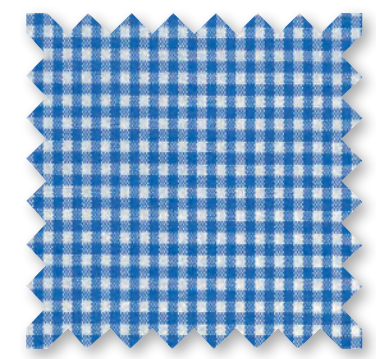
BRRR° CHARLESTON-ROSEMONT TATTERSALL
9047 CLASSIC
Chest pocket | 91% Nylon / 9% Spandex (with brrr° technology) | Retail \$145.00



BRRR° MICRO-GINGHAM
7857 CLASSIC
Outline Skipjack embroidery | 91% Nylon / 9% Spandex (with brrr° technology) | Retail \$145.00



SEVEN SEAS BLUE

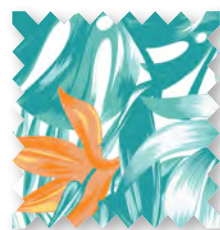


COBALT BLUE

DRIVER MONSTERA PALM PRINT PERF POLO | 12/25



9612 Outline Skipjack heat seal on back neck | Open sleeve | 2-piece self-collar | 3-button placket with branded white buttons | Drop tail hem | UV Protection | Stretch for ease of movement | Moisture wicking | Jersey | Recycled components | 94% Recycled Polyester / 6% Spandex | Sizes XS-XXL | Retail \$95.00



CLOUD WHITE

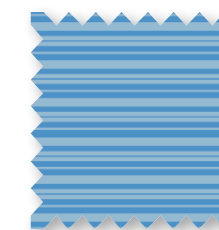


HEAT SEAL INTERIOR LABEL ON ALL DRIVER POLOS

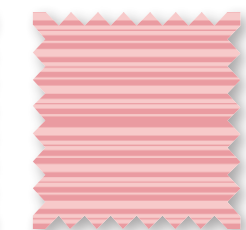
RYDER HEATHER BOMBAY STRIPE POLO | 12/25



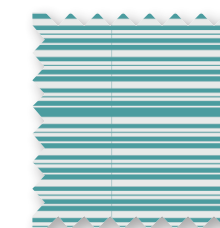
9614 Outline Skipjack heat seal on back neck | Open sleeve | 2-piece self-collar | 3-button placket with branded white buttons | Drop tail hem | Stretch | UV Protection | Moisture wicking | Jersey | 88% Polyester / 12% Spandex | Sizes XS-XXL | Retail \$95.00



HEATHER BOAT BLUE



HEATHER FLAMINGO PINK



HEATHER TIDAL WAVE

DRIVER FISH TOSS PRINT PERF POLO | 12/25



9613 Outline Skipjack heat seal on back neck | Open sleeve | 2-piece self-collar | 3-button placket with branded white buttons | Drop tail hem | UV Protection | Stretch for ease of movement | Moisture wicking | Jersey | Recycled components | 94% Recycled Polyester / 6% Spandex | Sizes XS-XXL | Retail \$95.00



AGED DENIM

RYDER PERFORMANCE POLO | 12/25



8082 Outline Skipjack heat seal logo on back neck | Open chest | Open sleeve cuffs | 2-piece self-collar | 3-button placket with branded white buttons | Drop tail | Soft touch | Moisture wicking | 4-way stretch | UV Protection | 88% Polyester / 12% Spandex | Sizes S-XXL | Retail \$95.00



CLASSIC WHITE

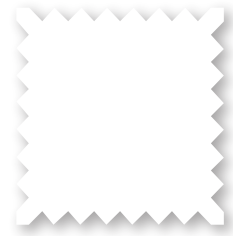


TRUE NAVY

RYDER LS PERFORMANCE POLO | 12/25



8431 Outline Skipjack heat seal logo on back neck | Self banded cuffs | Self 2-piece collar | 3-button placket with white branded buttons | Drop tail | Stretch | UV Protection | Moisture wicking | Performance Jersey | 88% Polyester / 12% Spandex | Sizes S-XXL | Retail \$110.00

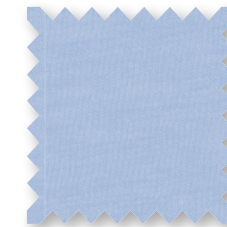


CLASSIC WHITE

CRUISER HEATHER 1/4 ZIP | 12/25



9620 Skipjack Coin on back neck | Open Chest | Self standing collar | Zipper placket with rubber branded pull | Self sleeve cuff and hem band | Suede finish | UV Protection | Moisture wicking | Stretch | 88% Polyester / 12% Spandex | Sizes S-XXL | Retail \$120.00



HEATHER
RAIN WATER

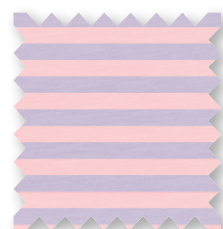


HEATHER
SLATE GREY

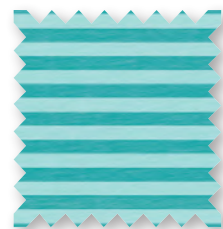
CRUISER HEATHER MICRO-STRIPE PERF 1/4 ZIP | 12/25



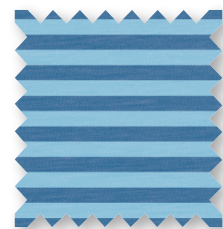
9619 Skipjack Coin on back neck | Open Chest | Self standing collar | Zipper placket with rubber branded pull | Self sleeve cuff and hem band | Suede finish | UV Protection | Moisture wicking | Stretch | 88% Polyester / 12% Spandex | Sizes S-XXL | Retail \$120.00



HEATHER
ROSE BLUSH



HEATHER
TIDAL WAVE

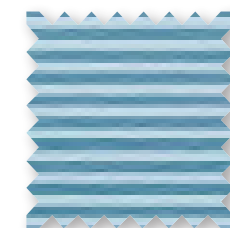


HEATHER
ATLANTIC BLUE

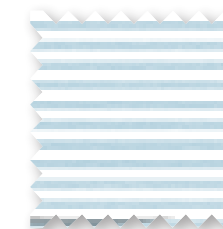
CRUISER HEATHER MICRO-STRIPE PERF 1/4 ZIP | 12/25



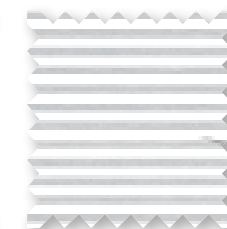
7650 Classic fit | Skipjack coin on back neck | Open chest | T3 striped neck tape | Self standing collar | Zipper placket with rubber branded pull | Self sleeve cuff | Self cuff hem band | Moisture wicking | 4-way stretch | UV Protection | 88% Polyester / 12% Spandex | Sizes S - XXL | Retail \$110.00



HEATHER
BLUE SAPPHIRE



HEATHER
AQUAMARINE

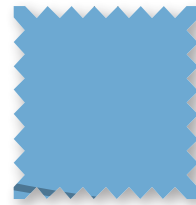


HEATHER
STEEL GREY

CCC FLANKER 1/4 ZIP | 12/25



7834 Rubber Skipjack on center back collar | Custom embroidery on chest | T3 striped neck tape | Self standing collar | Zipper placket with rubber branded pull | Self sleeve cuff | Self cuff hem band | Moisture wicking | UV Protection | 94% Polyester / 6% Spandex | Sizes S – XXL | Retail \$120.00



RUSH BLUE



NAVY

ABERCORN CAMO PERFORMANCE VEST | 12/25



9508 Skipjack rubber coin on back neck | Mock Neck With Knit Interior Collar | Two Way Zipper placket with zipper pull and Skipjack circle extender | Welt pockets with zipper closure | Interior sweat patch | Rubber Skipjack on exterior back collar | Quilted front panels | Interior patch pocket on wearer's left side | 100% Polyester | Sizes S-XXL | Retail \$138.00



TRUE NAVY

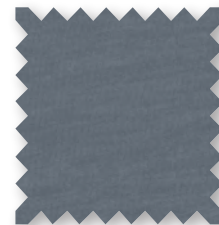
ABERCORN PERFORMANCE VEST | 12/25



8875 Full Rubber Skipjack on back neck | Skipjack circle zipper extender | Solid grosgrain ribbon trim | 2-way reverse coil zipper | matte enamel pull and branded pull extension | Welt pocket at panel seam | 2-piece self-collar | Water resistant | Lamination | 100% Polyester Laminated (Quilt) Woven + Jersey | Sizes S-XXL | Retail \$135.00



BLUE RIDGE



HARBOR MIST

ABERCORN PERFORMANCE JACKET | 12/25



9509 Skipjack rubber coin on back neck | Mock neck | Quilted front panels | Interior patch pocket on wearer's left side | Water resistant | 100% Polyester | Sizes S-XXL | Retail \$165.00



TRUE NAVY

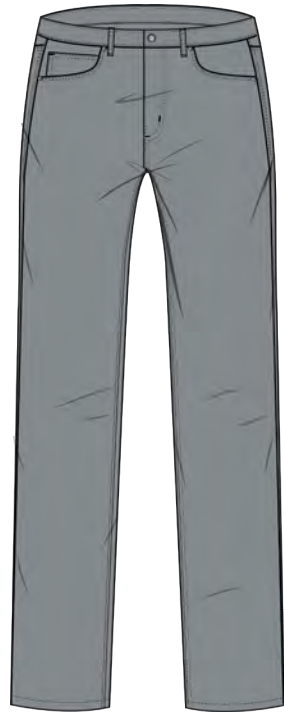
MENS

1/25

INTERCOASTAL PANT | 1/25



4115 Trim Fit | Outline Skipjack embroidery on 5th Pocket | Boat Rope Binding at interior back waistband | Antique nickel metal zipper with Southern Tide shank button | Grey camo pocket bags | Moisture Control | Moisture wicking | UV Protection | 97% Nylon / 3% Spandex | Refer to size chart below | Retail \$135.00



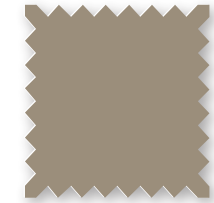
STEEL GREY

L/W	28	30	31	32	33	34	35	36	37	38	40	42
30												
32												
34												

T3 GULF SHORT | 1/25



4744 9" inseam | Outline Skipjack embroidery above right hand back pocket | T3 heat transfer main label at back interior waistband | Coil zipper with rubber coated Skipjack button closure | Mesh pocketing | One button closure back pocket on left, other is open 2" self-fabric on bottom of front pocket for extra security | 4-way stretch | Quick dry | Moisture wicking | 52% Cotton / 39% Polyester / 9% Spandex | See size chart below | Retail \$89.50



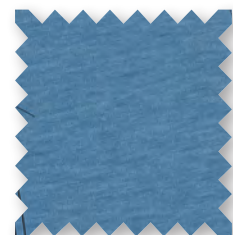
SANDSTONE KHAKI

L/W	28	30	31	32	33	34	35	36	37	38	40	42
9"												

HEATHER T3 GULF SHORT | 1/25



4733 9" inseam | Skipjack embroidery above right hand back pocket | Standard coil zipper with rubber coated Skipjack button closure | Mesh pocketing | One button closure back pocket on the left, right is open | 2" self-fabric on bottom of front pocket for extra security | 4-way stretch | Quick dry | Moisture wicking | 73% Polyester / 19% Cotton / 8% Spandex | Sizes 28,30, 32-36, 38, 40, 42 | Retail \$89.50



HEATHER ATLANTIC BLUE



HEATHER TIDAL WAVE

L/W	28	30	31	32	33	34	35	36	37	38	40	42
9"												

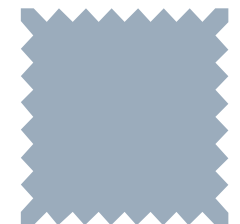
BRRR-DIE GULF SHORT | 1/25



7769 8" inseam | Outline Skipjack embroidery above right hand back pocket | Logo elastic interior waistband | Center front button and zipper fly | Rubber branded buttons | Rubber auto-lock pull | Rigid waistband | Slanted hand pockets | Welt back pockets | brrr cooling | Moisture wicking | UV Protection | 85% brrr Nylon / 15% Spandex | Sizes 28, 30, 32-36, 38, 40, 42 | Retail \$99.50



DARK SEAS



FOG



SANDSTONE KHAKI



STEEL GREY

L/W	28	30	31	32	33	34	35	36	37	38	40	42
8"												

INTERCOASTAL SPORT SHIRTS | 1/25

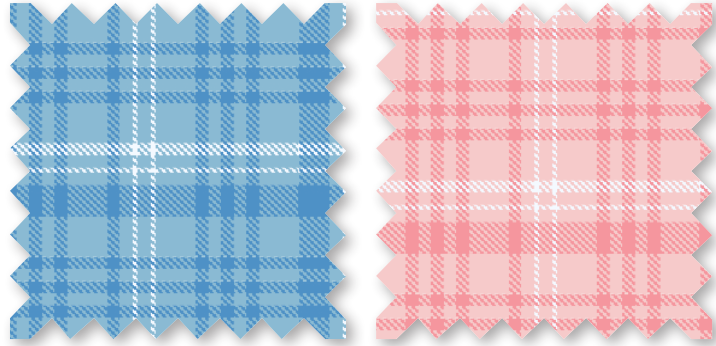


Outline embroidery on chest pocket (unless otherwise noted) | Button down collar | Sleeve placket with adjustable cuff | Eyelets under arm | Stretch | UV protection | Quick dry fabric | Moisture wicking | Anti-microbial
 Sizes S-XXL (*3X noted).

KEOWEE PLAID 1

9840 CLASSIC

93% Nylon / 7% Spandex | Retail \$135.00



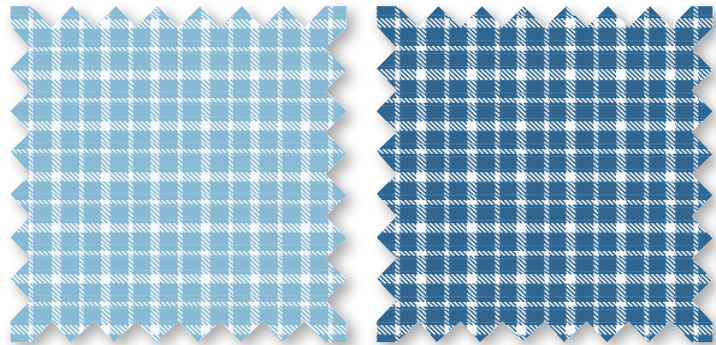
RAIN WATER

ROSE BLUSH

brrr° CHARLESTON BEAUMONT PLAID 1 brrr°

9845 CLASSIC

93% brrr° Nylon / 7% Spandex | Retail \$145.00



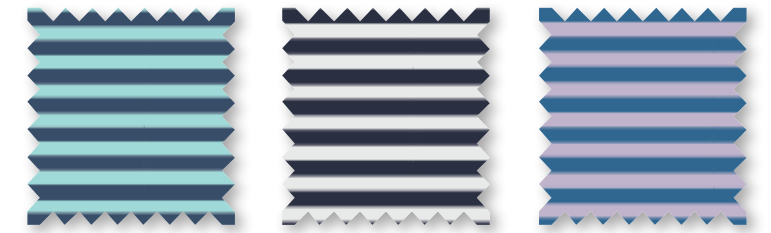
RAIN WATER

ATLANTIC BLUE

brrr° eeze SHORES STRIPE PERFORMANCE POLO | 1/25



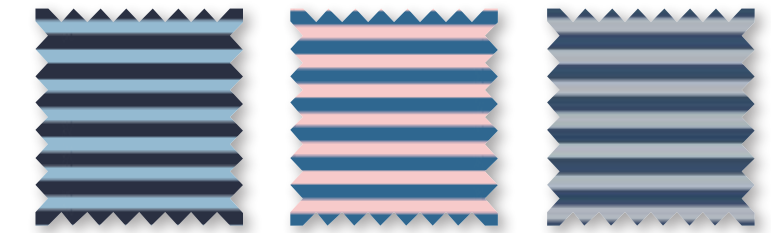
8932 Outline Skipjack heat logo on back neck | 2-piece self-collar | 3-button placket with branded white buttons | Drop tail | Moisture Wicking | UV Protection | Quick Dry | brrr° Cooling | Stretch | 83% brrr° Nylon / 17% Spandex
 | Sizes S-XXL | Retail \$99.50



BALTIC TEAL

CLOUD WHITE

LIGHT PURPLE



RAIN WATER

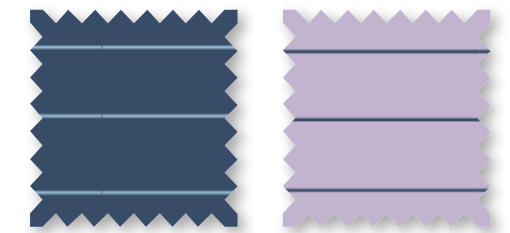
ROSE BLUSH

SLATE GREY

RYDER HEATHER MARIN STRIPE PERF POLO | 1/25

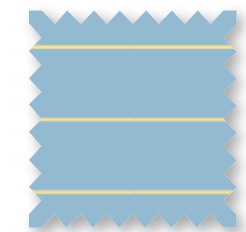


9826 Outline Skipjack heat seal on back neck | Open sleeve | 2-piece self-collar | 3-button placket with branded white buttons | Drop tail | Stretch | UV Protection | Moisture Wicking | Quick Dry | 88% Polyester / 12% Spandex | Sizes S-XXL | Retail \$95.00



HEATHER AGED DENIM

HEATHER ORCHID PETAL

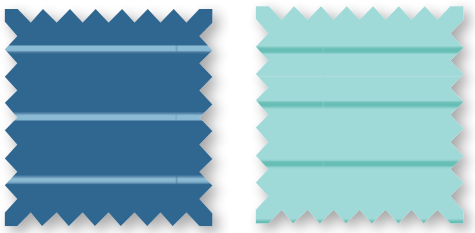


HEATHER RAIN WATER

DRIVER BOWEE STRIPE PERFORMANCE POLO | 1/25



9828 Outline Skipjack heat seal on back neck | Open sleeve | 2-piece self-collar | 3-button placket with branded white buttons | Drop tail hem | UV Protection | Stretch | Moisture wicking | Quick dry | Recycled components | 94% Recycled Polyester / 6% Spandex | Sizes S-XXL | Retail \$95.00



ATLANTIC BLUE BALTIC TEAL

SOUTHERN TIDE
— M —
100% COTTON JERSEY
MADE IN CHINA

HEAT SEAL INTERIOR
LABEL ON ALL
DRIVER POLOS

DRIVER POPPIN' POPPIES PRINT PERF POLO | 1/25



9832 Outline Skipjack heat seal on back neck | Open sleeve | 2-piece self-collar | 3-button placket with branded white buttons | Drop tail hem | UV Protection | Stretch | Moisture wicking | Quick dry | Recycled components | 94% Recycled Polyester / 6% Spandex | Sizes S-XXL | Retail \$95.00

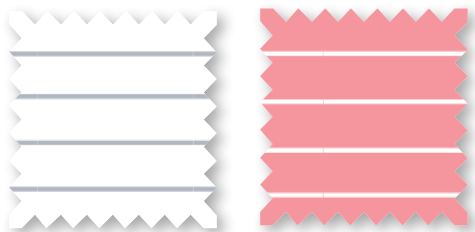


AGED DENIM

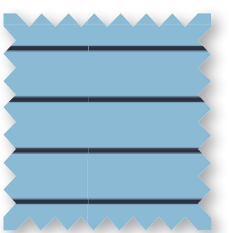
DRIVER MAYFAIR PERFORMANCE POLO | 1/25



9830 Outline Skipjack heat seal on back neck | Open sleeve | 2-piece self-collar | 3-button placket with branded white buttons | Drop tail hem | UV Protection | Stretch | Moisture wicking | Quick dry | Recycled components | 94% Recycled Polyester / 6% Spandex | Sizes S-XXL | Retail \$95.00



CLASSIC WHITE FLAMINGO PINK

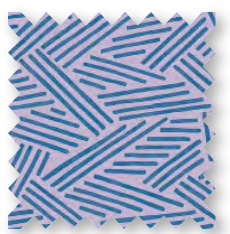


RAIN WATER

DRIVER ABSTRACT SCRIBBLE PERF POLO | 1/25



9834 Outline Skipjack heat seal on back neck | Open sleeve | 2-piece self-collar | 3-button placket with branded white buttons | Drop tail hem | UV Protection | Stretch | Moisture wicking | Quick dry | Recycled components | 94% Recycled Polyester / 6% Spandex | Sizes S-XXL | Retail \$95.00

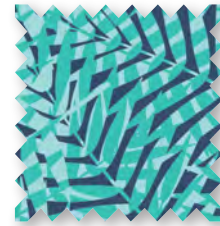


ORCHID PETAL

DRIVER VIBIN' PALM PRINT PERFORMANCE POLO | 1/25



9835 Outline Skipjack heat seal on back neck | Open sleeve | 2-piece self-collar | 3-button placket with branded white buttons | Drop tail hem | UV Protection | Stretch | Moisture wicking | Quick dry | Recycled components | 94% Recycled Polyester / 6% Spandex | Sizes S-XXL | Retail \$95.00

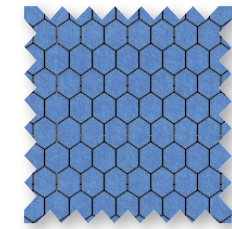


ATLANTIC BLUE

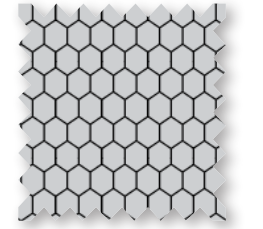
SCUTTLE HEATHER HOODIE PERFORMANCE 1/4 ZIP | 1/25



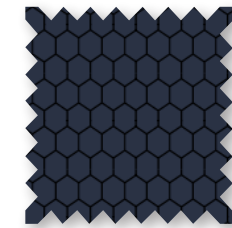
9343 Exterior raised Skipjack clamp label at bottom hem | Hood | Fold over self-cuff | Zipper with branded zipper pull | Quick dry | Moisture wicking | Stretch | 93% Polyester / 7% Spandex | Sizes S-XXL | Retail \$120.00



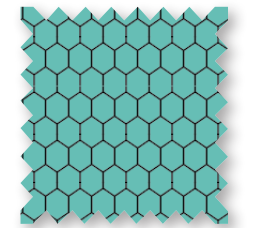
HEATHER
BOAT BLUE



HEATHER
SLATE GREY



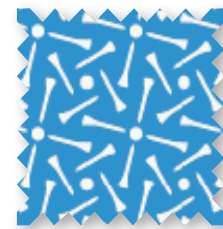
HEATHER
TRUE NAVY



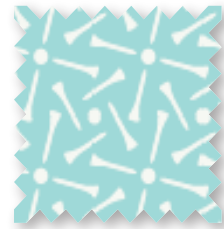
HEATHER
OCEAN TEAL

PINE RIDGE PRINT CRUISER 1/4 ZIP | 1/25

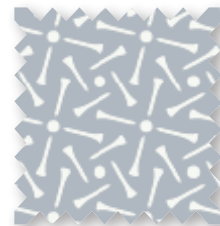
9744 Skipjack coin on back neck | Open chest | Self standing collar | Zipper placket with rubber branded pull | Self sleeve cuff and hem band | Moisture Wicking | Stretch | UV Protection | 88% Polyester / 12% Spandex | Sizes S-XXL | Retail \$125.00



ATLANTIC BLUE



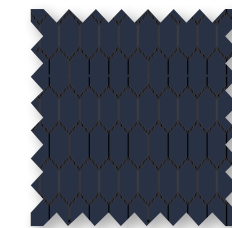
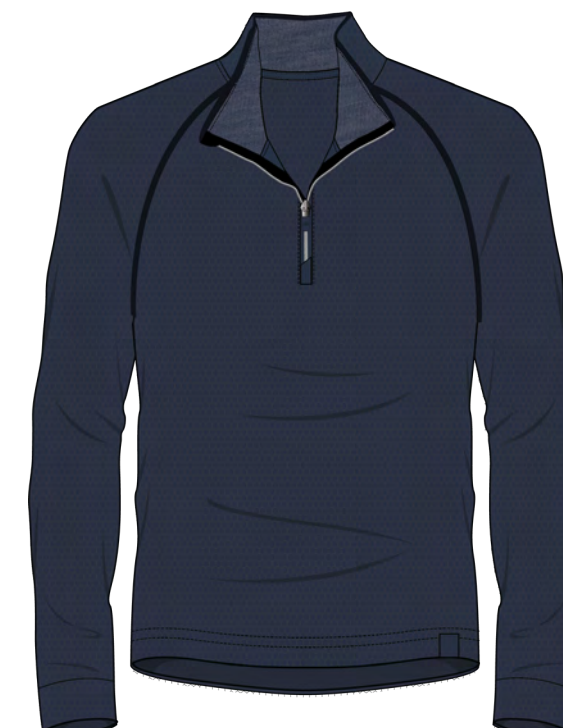
BALTIC TEAL



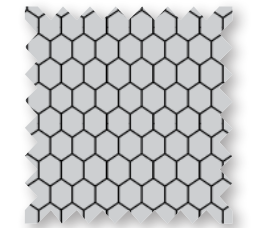
STEEL GREY

SCUTTLE HEATHER 1/4 ZIP | 1/25

10057 Exterior raised Skipjack clamp label at bottom hem | Hood | Fold over self-cuff | Zipper with branded zipper pull | Quick dry | Moisture wicking | Stretch | 93% Polyester / 7% Spandex | Sizes S-XXL | Retail \$120.00



HEATHER
TRUE NAVY

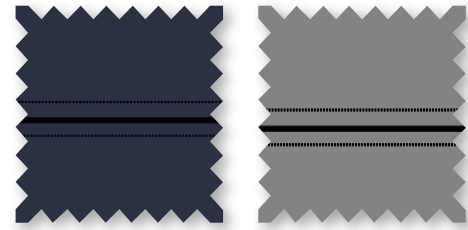


HEATHER
SLATE GREY

SHORELINE PERFORMANCE PULLOVER | 1/25



9825 Active Skipjack reflective heat transfer on back neck | Raised reflective Southern Tide wordmark on left side seam | Hand pockets at side seam | Lightweight mesh pocket bags | Hidden contrast color zipper with branded zipper pull | Signature stripe interior neck tape | Recycled Components | 100% Recycled Nylon | Sizes S-XXL | Retail \$165.00



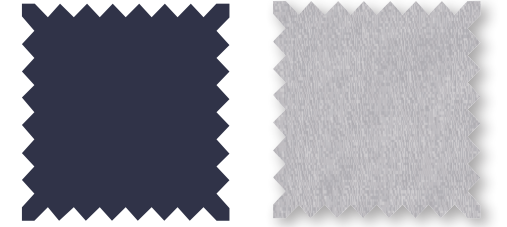
TRUE NAVY

FROST GREY

brrr° illiant PERFORMANCE HOODIE | 1/25



9742 Active Skipjack reflective heat transfer on back neck | Raised reflective Southern Tide wordmark on left side seam | Reflective paracord on back neck | Signature stripe interior neck tape | Overlap at front neckline | Self sleeve cuff and hem band | brrr° cooling | Quick dry | Moisture wicking | Stretch | UV protection | 46% brrr° Polyester / 46% Polyester / 8% Spandex | Sizes XS-XXL | Retail \$95.00



NAUTICAL NAVY

STEEL GREY

ABERCORN PERFORMANCE VEST | 1/25



8875 Full Rubber Skipjack on back neck | Skipjack circle sipper extender | Solid grosgrain ribbon trim | 2-way reverse coil zipper | Matte enamel pull and branded pull extension | Welt pocket at panel seam | 2-piece self-collar | Water resistant | Laminatino | 100% Polyester Laminated (Quilt) Woven + Jersey | Sizes S-XXL | Retail \$135.00



GRAVEL GREY

brrr° illiant PERFORMANCE TEE | 1/25



9710 Active Skipjack reflective heat transfer on back neck | Raised reflective Southern Tide wordmark on left side seam | brrr° cooling | Quick dry | Moisture wicking | Stretch | UV protection | 46% brrr° Polyester / 46% Polyester / 8% Spandex | Sizes XS-XXL | Retail \$78.00



NAUTICAL NAVY

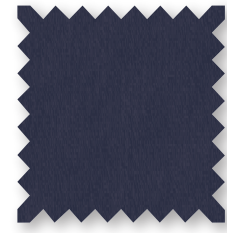
STEEL GREY

PLATINUM GREY

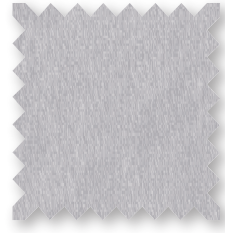
brrr° illiant PERFORMANCE LS TEE | I/25



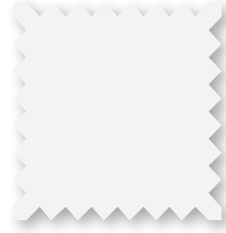
9738 Active Skipjack reflective heat transfer on back neck | Raised reflective Southern Tide wordmark on left side seam | brrr° cooling | Quick dry | Moisture wicking | Stretch | UV protection | 46% brrr° Polyester / 46% Polyester / 8% Spandex | Sizes XS-XXL | Retail \$88.00



NAUTICAL NAVY



STEEL GREY



PLATINUM GREY

MENS

2/25

INTERCOASTAL SPORT SHIRTS | 2/25



Outline embroidery on chest pocket (unless otherwise noted) | Button down collar | Sleeve placket with adjustable cuff | Eyelets under arm | Stretch | UV protection | Quick dry fabric | Moisture wicking | Anti-microbial
 Sizes S-XXL (*3X noted).

HEATHER HARTWELL PLAID

9709 CLASSIC

74% Nylon / 18% Polyester / 8% Spandex | Retail \$135.00



HEATHER FLAMINGO PINK

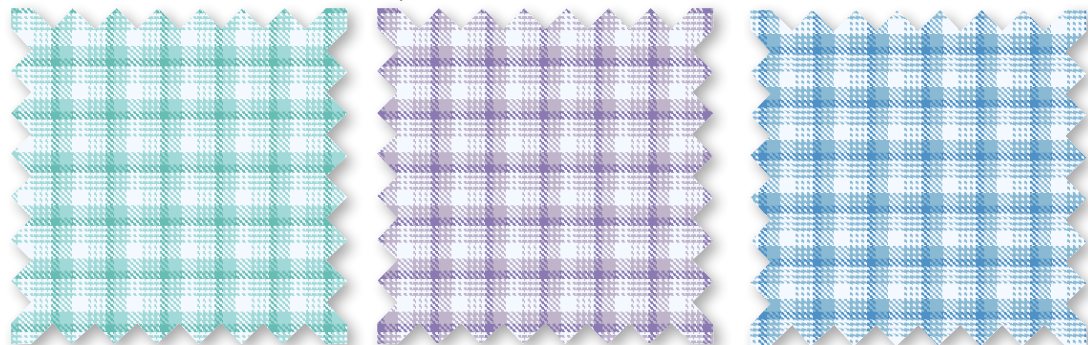
HEATHER MINT

HEATHER RAIN WATER

brrr° SKYCREST PLAID

9846 CLASSIC

91% brrr° Nylon / 9% Spandex | Retail \$145.00



BALTIC TEAL

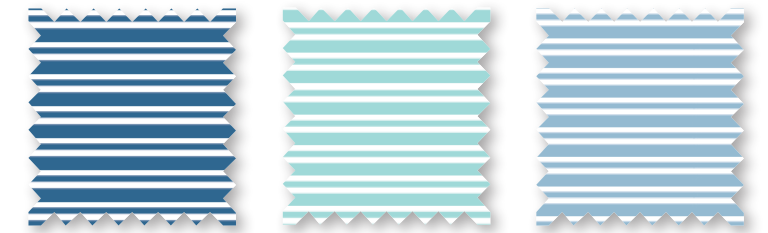
ORCHID PETAL

RAIN WATER

brrr° eeze MILLWOOD STRIPE PERFORMANCE POLO | 2/25



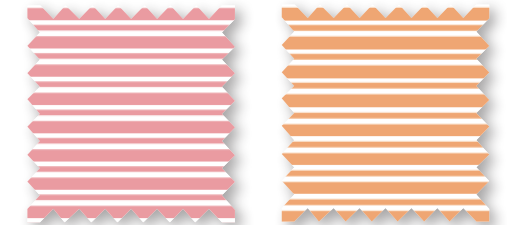
9758 Outline Skipjack heat logo on back neck | 2-piece self-collar | 3-button placket with branded white buttons | Drop tail | Moisture Wicking | UV Protection | Quick Dry | brrr° Cooling | Stretch | 83% brrr° Nylon / 17% Spandex | Sizes S-XXL | Retail \$99.50



ATLANTIC BLUE

BALTIC TEAL

RAIN WATER



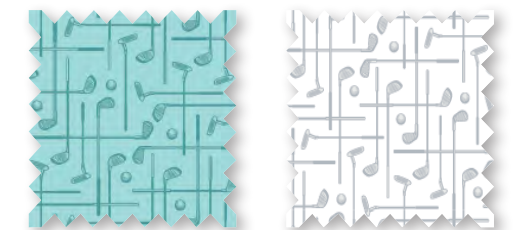
FLAMINGO PINK

HORIZON

DRIVER OVER CLUBBING PRINT PERFORMANCE POLO | 2/25



9850 Outline Skipjack heat seal on back neck | Open sleeve | 2-piece self-collar | 3-button placket with branded white buttons | Drop tail hem | UV Protection | Stretch | Moisture wicking | Quick dry | Recycled components | 94% Recycled Polyester / 6% Spandex | Sizes S-XXL | Retail \$95.00



BALTIC TEAL

CLASSIC WHITE

DRIVER NICE TO SEA YOU PERFORMANCE POLO | 2/25

9851 Outline Skipjack heat seal on back neck | Open sleeve | 2-piece self-collar | 3-button placket with branded white buttons | Drop tail hem | UV Protection | Stretch | Moisture wicking | Quick dry | Recycled components | 94% Recycled Polyester / 6% Spandex | Sizes S-XXL | Retail \$95.00



CLASSIC WHITE

DRIVER MARG MADNESS PRINT PERFORMANCE POLO | 2/25

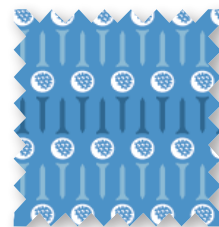
9853 Outline Skipjack heat seal on back neck | Open sleeve | 2-piece self-collar | 3-button placket with branded white buttons | Drop tail hem | UV Protection | Stretch | Moisture wicking | Quick dry | Recycled components | 94% Recycled Polyester / 6% Spandex | Sizes S-XXL | Retail \$95.00



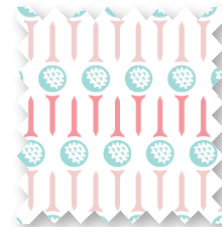
ATLANTIC BLUE

DRIVER BEST BALL PRINT PERFORMANCE POLO | 2/25

9852 Outline Skipjack heat seal on back neck | Open sleeve | 2-piece self-collar | 3-button placket with branded white buttons | Drop tail hem | UV Protection | Stretch | Moisture wicking | Quick dry | Recycled components | 94% Recycled Polyester / 6% Spandex | Sizes S-XXL | Retail \$95.00



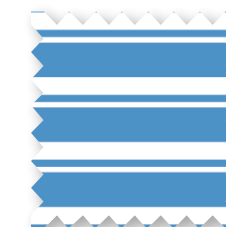
BOAT BLUE



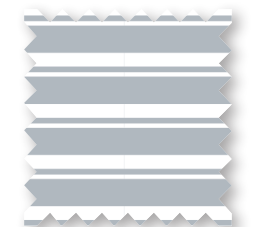
CLASSIC WHITE

DRIVER ALTON STRIPE PERFORMANCE POLO | 2/25

9856 Outline Skipjack heat seal on back neck | Open sleeve | 2-piece self-collar | 3-button placket with branded white buttons | Drop tail hem | UV Protection | Stretch | Moisture wicking | Quick dry | Recycled components | 94% Recycled Polyester / 6% Spandex | Sizes S-XXL | Retail \$95.00



BOAT BLUE



SLATE GREY

DRIVER BRANTLEY STRIPE PERFORMANCE POLO | 2/25



9857 Outline Skipjack heat seal on back neck | Open sleeve | 2-piece self-collar | 3-button placket with branded white buttons | Drop tail hem | UV Protection | Stretch | Moisture wicking | Quick dry | Recycled components | 94% Recycled Polyester / 6% Spandex | Sizes S-XXL | Retail \$95.00



BOAT BLUE

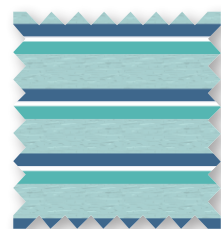


SLATE GREY

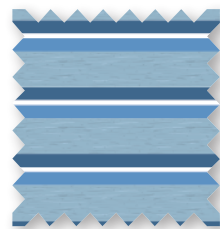
RYDER HTR KENDICK PERFORMANCE POLO | 2/25



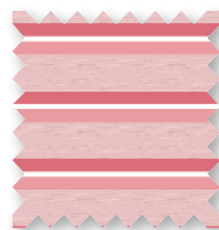
9859 Outline Skipjack heat seal on back neck | Open sleeve | 2-piece self-collar | 3-button placket with branded white buttons | Drop tail | Stretch | UV Protection | Moisture Wicking | Quick Dry | 88% Polyester / 12% Spandex | Sizes S-XXL | Retail \$95.00



HEATHER
BALTIC TEAL



HEATHER
RAIN WATER



HEATHER
ROSE BLUSH

MENS

3/25

INTERCOASTAL SPORT SHIRTS | 3/25

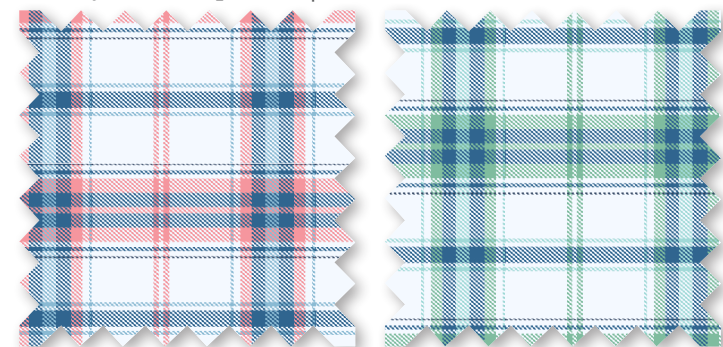


Outline embroidery on chest pocket (unless otherwise noted) | Button down collar | Sleeve placket with adjustable cuff | Eyelets under arm | Stretch | UV protection | Quick dry fabric | Moisture wicking | Anti-microbial
 Sizes S-XXL (*3X noted).

SPELO PLAIID

9841 CLASSIC

93% Nylon / 7% Spandex | Retail \$135.00



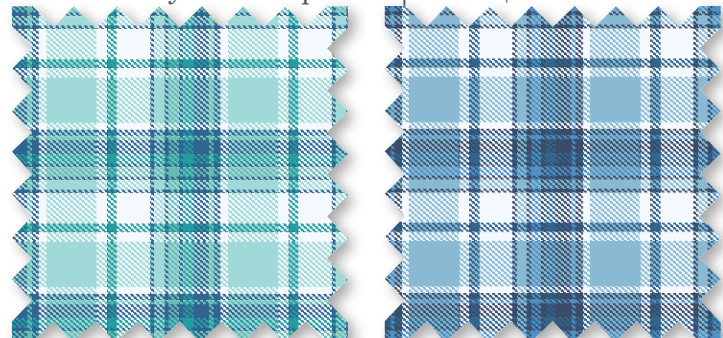
FLAMINGO PINK

NEPTUNE GREEN

brrr° TIDEPOINTE PLAID

9847 CLASSIC

91% brrr° Nylon / 9% Spandex | Retail \$145.00



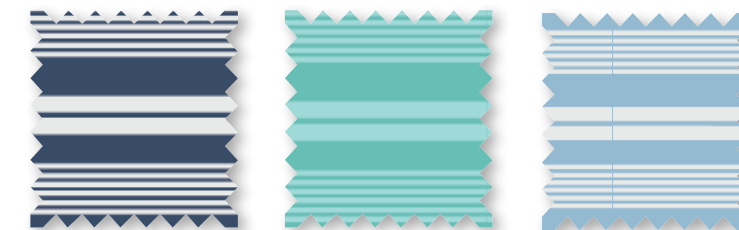
BALTIC TEAL

RAIN WATER

brrr° eeze BOWEN STRIPE PERFORMANCE POLO | 3/25



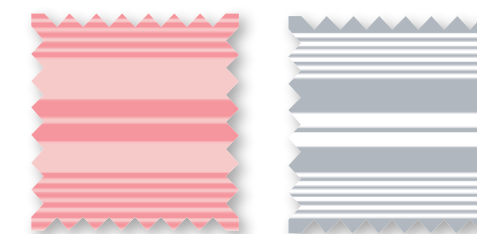
9754 Outline Skipjack heat logo on back neck | 2-piece self-collar | 3-button placket with branded white buttons | Drop tail | Moisture Wicking | UV Protection | Quick Dry | brrr° Cooling | Stretch | 83% brrr° Nylon / 17% Spandex | Sizes S-XXL | Retail \$99.50



AGED DENIM

MINT

RAIN WATER



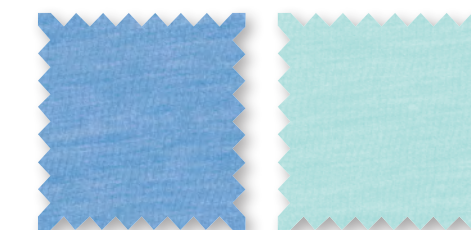
ROSE BLUSH

SLATE GREY

brrr° eeze HEATHER PERFORMANCE POLO | 3/25



10348 Outline Skipjack heat logo on back neck | 2-piece self-collar | 3-button placket with branded white buttons | Drop tail | Moisture Wicking | UV Protection | Quick Dry | brrr° Cooling | Stretch | 48% Polyester / 45% brrr° Nylon / 7% Spandex | Sizes S-XXL | Retail \$99.50



HEATHER OCEAN CHANNEL

HEATHER TIDAL WAVE



HEATHER NAUTICAL NAVY

HEATHER STEEL GREY

DRIVER SUNDAY SHELLIES PERFORMANCE POLO | 3/25



9863 Outline Skipjack heat seal on back neck | Open sleeve | 2-piece self-collar | 3-button placket with branded white buttons | Drop tail hem | UV Protection | Stretch | Moisture wicking | Quick dry | Recycled components | 94% Recycled Polyester / 6% Spandex | Sizes S-XXL | Retail \$95.00

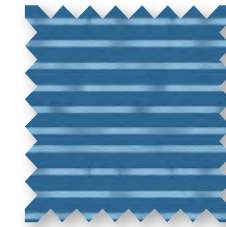


CLASSIC WHITE

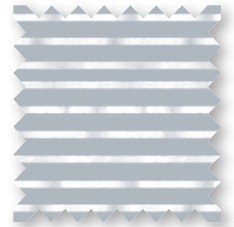
DRIVER WYMBERLY STRIPE PERFORMANCE POLO | 3/25



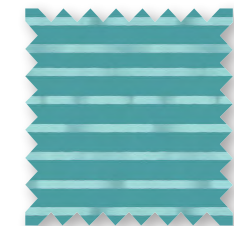
9917 Outline Skipjack heat seal on back neck | Open sleeve | 2-piece self-collar | 3-button placket with branded white buttons | Drop tail hem | UV Protection | Stretch | Moisture wicking | Quick dry | Recycled components | 94% Recycled Polyester / 6% Spandex | Sizes S-XXL | Retail \$95.00



ATLANTIC BLUE



SLATE GREY



TIDAL WAVE

SEASCAPE SAILING PRINT PERFORMANCE POLO | 3/25



9865 Outline Skipjack heat seal on back neck | Open sleeve | 2-piece self-collar | 3-button placket with branded white buttons | Drop tail hem | UV Protection | Stretch | Moisture wicking | Quick dry | Recycled components | 94% Recycled Polyester / 6% Spandex | Sizes S-XXL | Retail \$95.00



BALTIC TEAL

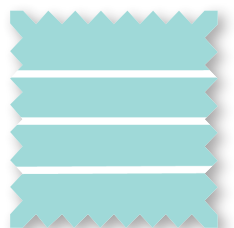
DRIVER BAY BRIDGE STRIPE PERFORMANCE POLO | 3/25



9918 Outline Skipjack heat seal on back neck | Open sleeve | 2-piece self-collar | 3-button placket with branded white buttons | Drop tail hem | UV Protection | Stretch | Moisture wicking | Quick dry | Recycled components | 94% Recycled Polyester / 6% Spandex | Sizes S-XXL | Retail \$95.00



ATLANTIC BLUE



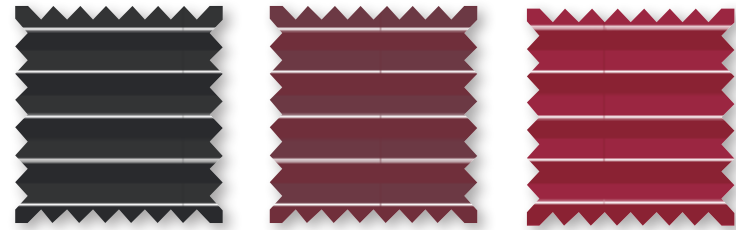
BALTIC TEAL

MENS

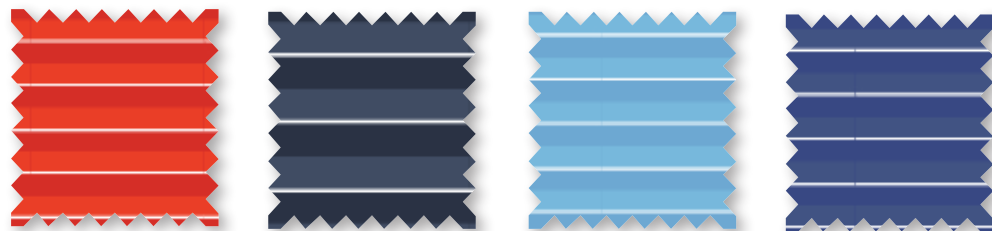
4/25

brr° eeze DESMOND STRIPE PERFORMANCE POLO | 4/25    

10055 Moisture wicking | UV protection | Quick dry | brr° cooling | Stretch for ease of movement | Outline Skipjack heat logo on back neck | 2-piece self-collar | 3-button placket with branded white buttons | Drop tail | 83% brr° Nylon 17% Spandex | S-XXL | Retail \$99.50, Decorated \$105.00



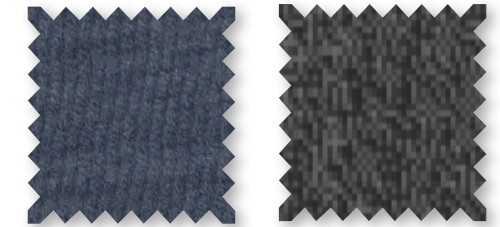
BLAC K CHIANTI CRIMSON



ENDZONE ORANGE NAVY RUSH BLUE UNIVERSITY BLUE

BAYBROOK HEATHER VEST | 4/25

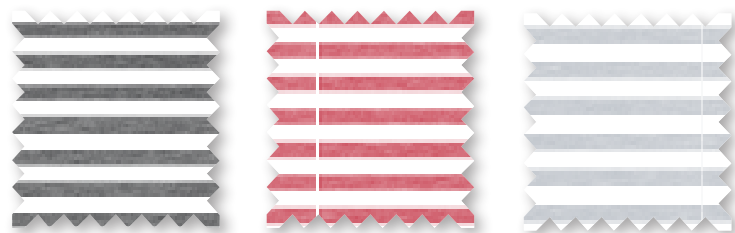
10058 Skipjack coin on back neck | Two-way zip | Zipper placket with branded zipper pull | Welt pockets with zipper closure | 100% Polyester | S-XXL | Retail \$138.00, Decorated \$148.00



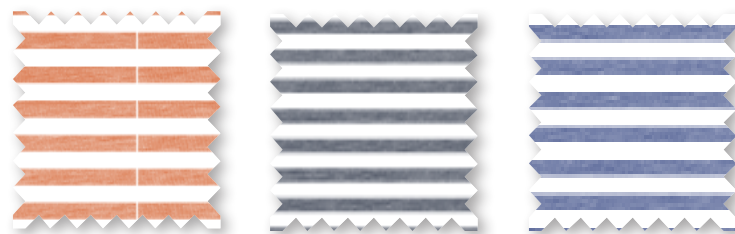
HEATHER NAVY HEATHER BLACK

CCC HEATHER CRUISER MICRO-STRIPE 1/4 ZIP | 4/25   

10051 Moisture wicking | 4-way stretch | UV protection | Skipjack coin on back neck | Open chest | Self standing collar | Zipper placket with rubber branded pull | Self sleeve cuff | Self cuff hem band | 88% Polyester 12% Spandex | S-XXL | Retail \$120, Decorated \$130.00



HTR BLAC K HTR VARSITY RED HTR SLATE GREY



HTR ENDZONE ORANGE HTR NAVY HTR UNIVERSITY BLUE

ABERCORN CAMO PERFORMANCE VEST | 4/25    

9508 Skipjack rubber coin on back neck | Mock Neck With Knit Interior Collar | Two Way Zipper placket with zipper pull and Skipjack circle extender | Welt pockets with zipper closure | Interior sweat patch | Rubber Skipjack on exterior back collar | Quilted front panels | Interior patch pocket on wearer's left side | 100% Polyester | Sizes S-XXL | Retail \$138.00



GRAVEL GREY

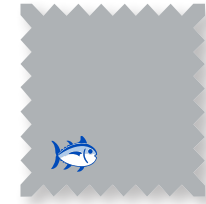
YOUTH SIZE CHART

Size		Height	Weight	Chest (Avg)	Waist (Avg)
XS	4	39 - 42	34 - 39	23	21
XS	5	42 - 44	40 - 45	24	21.5
S	6	45 - 47	46 - 49	25	22
S	7	49 - 51	50 - 58	26	23
M	8	51 - 53	58 - 63	27	23.5
M	10	54 - 56	64 - 74	28	24.5
L	12	57 - 59	75 - 88	29	25.5
L	14	60 - 63	89 - 105	30 - 31	26.5
XL	16	64 - 67	106 - 115	31 - 33	27.5

YOUTH

YOUTH T3 GULF SHORT | 12/25

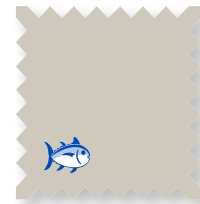
5118 Skipjack embroidery above right back pocket | Adjustable waistband at interior for sizes 4-10 | T3 heat transfer main label at back interior waistband | Coil zipper with rubber coated Skipjack button closure | Mesh pocketing | One button closure back pocket on left, other is open | 2" self fabric on bottom of front pockets for extra security | 4-way stretch | Quick dry | Moisture wicking | 56% Cotton / 36% Polyester / 8% Spandex | Sizes 4, 6, 8, 10, 12, 14, 16 | Retail \$59.50



SEAGULL GREY



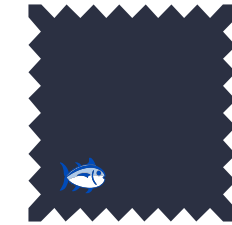
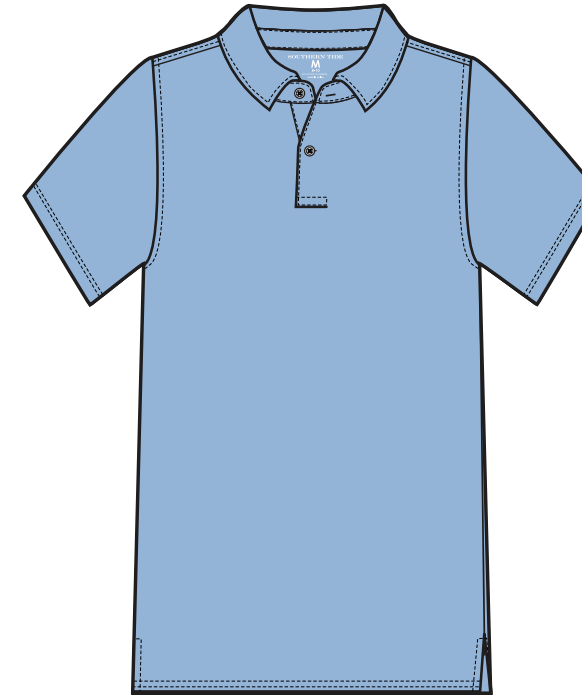
TRUE NAVY



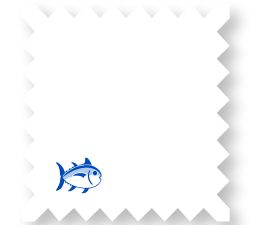
STONE

YOUTH DRIVER PERFORMANCE POLO | 12/25

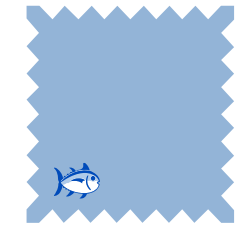
7991 Skipjack heat seal loo on back neck | Open chest | Printed label for comfort | Open sleeve | 2-piece self-collar | 2-button placket with branded white buttons | Even hem | Moisture wicking | Stretch | UV Protection | 94% Recycled Polyester / 6% Spandex | Sizes XS-XL | Retail \$55.00



TRUE NAVY



CLASSIC WHITE



SKY BLUE

YOUTH HEATHER T3 GULF SHORT | 12/25

6376 Skipjack embroidery above right back pocket | Adjustable waistband at interior for sizes 4-10 | T3 heat transfer main label at back interior waistband | Coil zipper with rubber coated Skipjack button closure | Mesh pocketing | One button closure back pocket on left, other is open | 2" self fabric on bottom of front pockets for extra security | 4-way stretch | Quick dry | Moisture wicking | 73% Polyester / 19% Cotton / 8% Spandex | Sizes 4, 6, 8, 10, 12, 14, 16 | Retail \$59.50



HEATHER
PORTO BLUE

YOUTH DRIVER MONSTERA PALM PRINT PERFORMANCE POLO | 12/25

9655 Outline Skipjack heat seal on left chest | 2-piece self-collar | 2-button placket with laser engraved buttons | Even hem | Moisture wicking | UV Protection | Stretch | Recycled components | 94% Recycled Polyester / 6% Spandex | Sizes XS-XL | Retail \$55.00



CLOUD WHITE

YOUTH DRIVER FISH TOSS PRINT PERFORMANCE POLO | 12/25

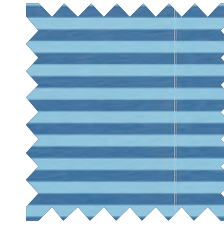
9656 Outline Skipjack heat seal on left chest | 2-piece self-collar | 2-button placket with laser engraved buttons | Even hem | Moisture wicking | UV Protection | Stretch | Recycled components | 94% Recycled Polyester / 6% Spandex | Sizes XS-XL | Retail \$55.00



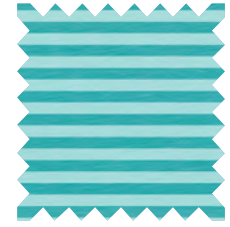
AGED DENIM

YOUTH CRUISER HEATHER MICRO-STRIPE 1/4 ZIP | 12/25

9665 Outline Skipjack heat seal logo | Open chest | Self standing collar | Zipper placket with rubber branded pull | Self sleeve cuff and hem band | UV Protection | Moisture wicking | 88% Polyester / 12% Spandex | Sizes XS-XL | Retail \$70.00



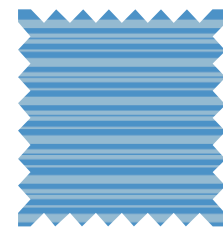
HEATHER ATLANTIC BLUE



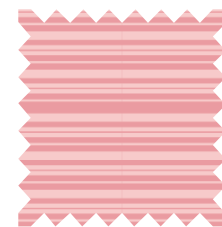
HEATHER TIDAL WAVE

YOUTH RYDER HEATHER BOMBAY STRIPE PERFORMANCE POLO | 12/25

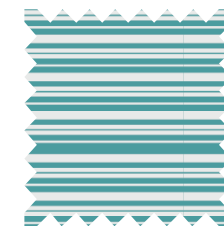
9666 Outline Skipjack heat seal on left chest | 2-piece self-collar | 2-button placket with laser engraved buttons | Even hem | Moisture wicking | UV Protection | Stretch | Soft touch | 88% Polyester / 12% Spandex | Sizes XS-XL | Retail \$55.00



HEATHER BOAT BLUE



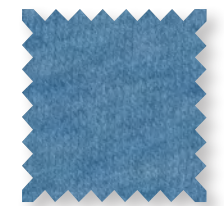
HEATHER FLAMINGO PINK



HEATHER TIDAL WAVE

YOUTH HEATHER T3 GULF SHORT | 1/25

6376 Skipjack embroidery above right back pocket | Adjustable waistband at interior for sizes 4-10 | T3 heat transfer main label at back interior waistband | Coil zipper with rubber coated Skipjack button closure | Mesh pocketing | One button closure back pocket on left, other is open | 2" self fabric on bottom of front pockets for extra security | 4-way stretch | Quick dry | Moisture wicking | 73% Polyester / 19% Cotton / 8% Spandex | Sizes 4, 6, 8, 10, 12, 14, 16 | Retail \$59.50



HEATHER ATLANTIC BLUE



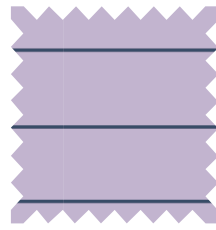
HEATHER TIDAL WAVE

YOUTH RYDER HEATHER MARIN STRIPE PERFORMANCE POLO | 1/25

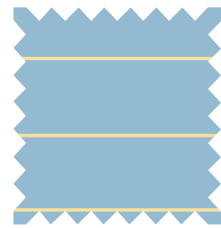
9952 Outline Skipjack heat seal logo on left chest | 2-piece self-collar | 2-button placket with laser engraved buttons | Even hem | Moisture wicking | UV Protection | Stretch | 88% Polyester / 12% Spandex | Sizes XS-XL | Retail \$55.00



HEATHER
AGED DENIM



HEATHER
ORCHID PETAL



HEATHER
RAIN WATER

YOUTH DRIVER SEASCAPE SAILING PRINTED PERFORMANCE POLO | 3/25

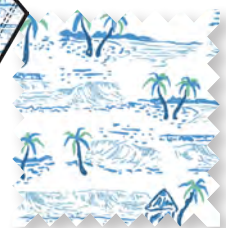
9955 Outline Skipjack heat seal logo | 2-piece self-collar | 2-button placket with branded white buttons | Even hem | Interior collar stays | Stretch | UV Protection | Moisture wicking | Recycled components | 94% Recycled Polyester / 6% Spandex | Sizes XS-XL | Retail \$55.00



BALTIC TEAL

YOUTH DRIVER NICE TO SEA YOU PRINT PERFORMANCE POLO | 2/25

10008 Outline Skipjack heat seal logo | 2-piece self-collar | 2-button placket with branded white buttons | Even hem | Interior collar stays | Stretch | UV Protection | Moisture wicking | Recycled components | 94% Recycled Polyester / 6% Spandex | Sizes XS-XL | Retail \$55.00



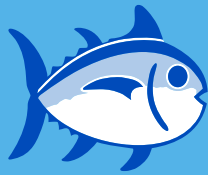
CLASSIC WHITE

YOUTH DRIVER WHY SO CRABBY PRINTED PERFORMANCE POLO | 3/25

9965 Outline Skipjack heat seal logo | 2-piece self-collar | 2-button placket with branded white buttons | Even hem | Interior collar stays | Stretch | UV Protection | Moisture wicking | Recycled components | 94% Recycled Polyester / 6% Spandex | Sizes XS-XL | Retail \$55.00



CLASSIC WHITE



SOUTHERN TIDE

orders@southerntide.com | app.repspark.com/stide

84 Villa Road | Suite 101 | Greenville, SC 29615 | 864-236-8015 Phone | 866-519-5060 Fax | 855-890-8334 Toll Free