

INSTALLATION INSTRUCTIONS – MULTIPURPOSE RACK



MULTIPURPOSE RACK SYSTEM
U.S. PATENT PENDING

CAUTION

ENSURE THAT YOUR VEHICLE IS EQUIPPED TO HANDLE EXCESSIVE WEIGHT FROM THE ADDITION OF NON-FACTORY ASSESSORIES.

USE OF THIS MULTIPURPOSE RACK SYSTEM IS AT THE OWNER'S RISK.

rucRak Inc. ASSUMES NO LIABILITY FOR VEHICLE DAMAGE, PROPERTY DAMAGE OR PERSONAL INJURY WHILE USING THIS PRODUCT.

THIS MULTIPURPOSE RACK SYSTEM IS INTENDED FOR OFF-ROAD USE ONLY. PLEASE FOLLOW ALL STATE AND LOCAL DOT LAWS WHILE USING THIS PRODUCT.

INSTALLATION NOTES

CAREFULLY READ ALL INSTRUCTIONS THOROUGHLY BEFORE ATTEMPTING TO INSTALL THESE PARTS AND ASSESSORIES.

ASK A FRIEND FOR HELP. HAVING A HELPING HAND WILL ALLOW FOR AN EASIER INSTALLATION AND MINIMIZE POTENTIAL INJURY WHILE HANDLING HEAVY PARTS.

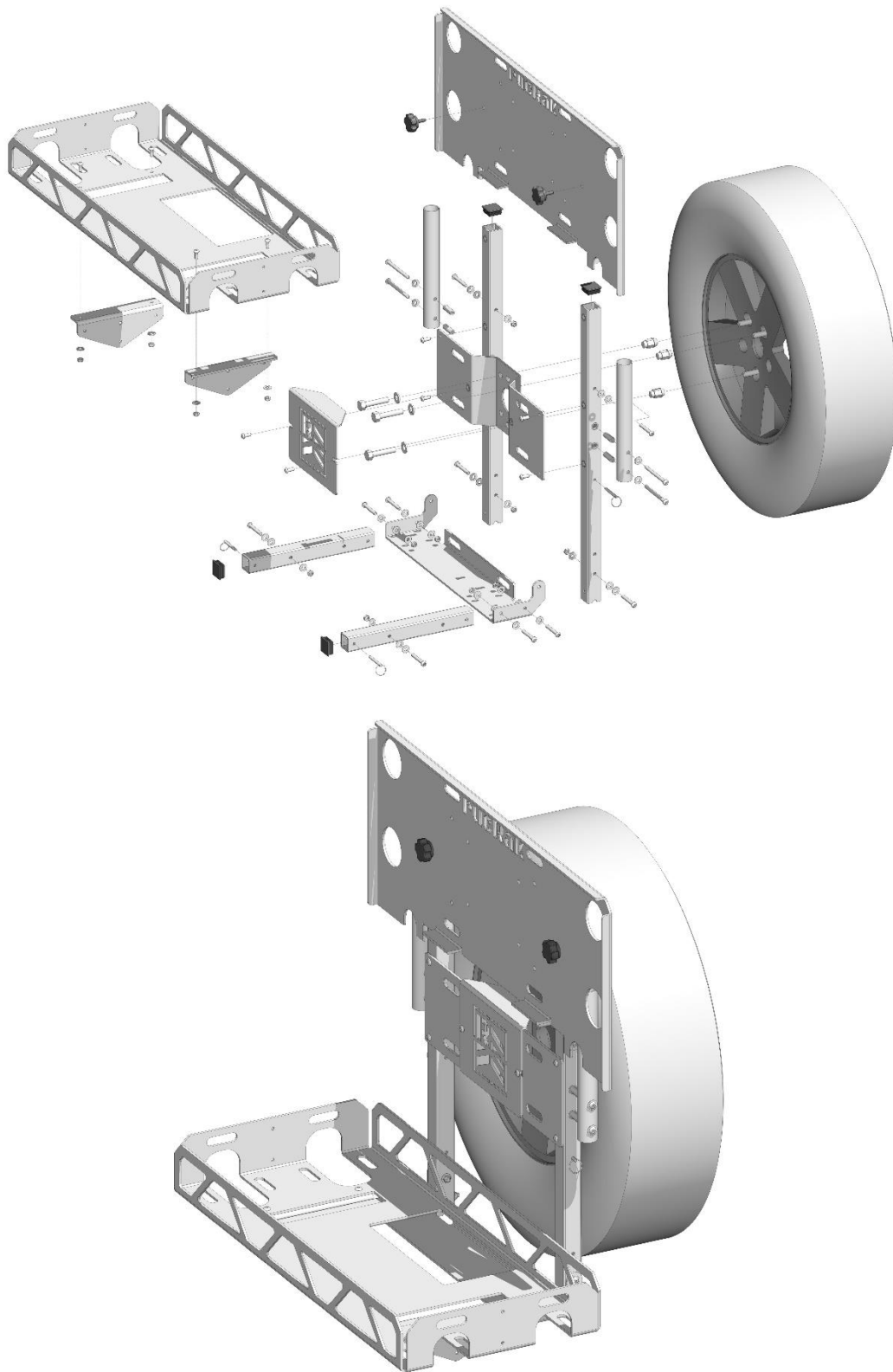
BE SURE TO LUBRICATE ALL STAINLESS STEEL HARDWARE PRIOR TO INSTALLATION.

ONLY HAND-TIGHTEN THE HARDWARE UNTIL ALL PARTS ARE FULLY ASSEMBLED.

VIDEO DEMONSTRATIONS OF INSTALLATIONS AND CONFIGURATIONS CAN BE FOUND ON OUR WEBSITE.

FOR TECHNICAL SUPPORT AND WARRANTY INFORMATION, PLEASE VISIT OUR WEBSITE.

WWW.RUCRAK.COM



PARTS INCLUDED PER (1) MULTIPURPOSE RACK		
ITEM	ITEM DESCRIPTION	QTY
100	H-FRAME ASSEMBLY	1
101	TABLE	1
102	BASKET ASSEMBLY	1
103	COVER PLATE (NOT SHOWN)	1
104	5/16"-18 x 2-1/2" LG CAP SCREW W/(2) WASHERS, NYLON WASHER, & LOCKNUT	4
105	QUICK-RELEASE PIN W/LANYARD	2
106	THREADED KNOB	2
107	½"-20 PASS-THRU LUG	3
108	½" WASHER	15
109	½"-20 x 2-1/2" LG BOLT (OPTIONAL LENGTHS INCLUDED PER ORDER)	3

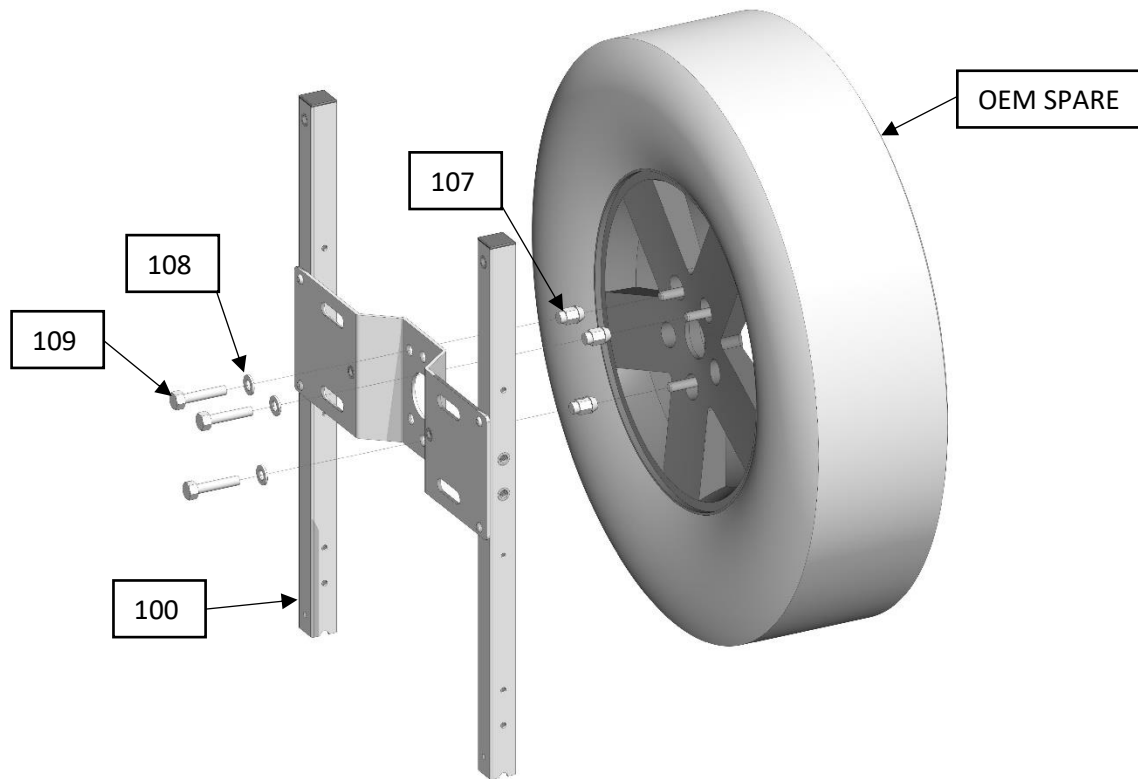


FIG. 1A

FIG. 1A IS THE INSTALLATION OF THE H-FRAME ASSEMBLY (ITEM 100) TO THE OEM SPARE TIRE.

STEP 1: REMOVE THE OEM LUGS FROM THE SPARE TIRE AND INSTALL THE PASS-THRU LUGS (ITEM 107).

STEP 2: ALIGN THE H-FRAME (ITEM 100) WITH THE 3 OEM STUDS AND INSTALL THE ½" BOLTS AND WASHERS (ITEMS 108 & 109).

NOTE: ALL 15 WASHERS (ITEM 108) INCLUDED IN THE HARDWARE SET MAY NOT BE NECESSARY. THESE ITEMS ARE INCLUDED TO HELP ACHIEVE AN EXACT FIT.

STEP 3: TIGHTEN THE BOLTS (ITEM 109) UNTIL THE VERTICAL PIPES OF THE H-FRAME (ITEM 100) ARE SNUG AGAINST THE OEM SPARE TIRE.

NOTE: DO NOT OVER-TIGHTEN THE ½" BOLTS (ITEM 109). DOING SO MAY CAUSE THE MOUNTING PLATE OF THE H-FRAME (ITEM 100) TO FLEX AND HINDER THE ALIGNMENT OF THE COVER PLATE, THE TABLE AND THE BASKET ASSEMBLY.

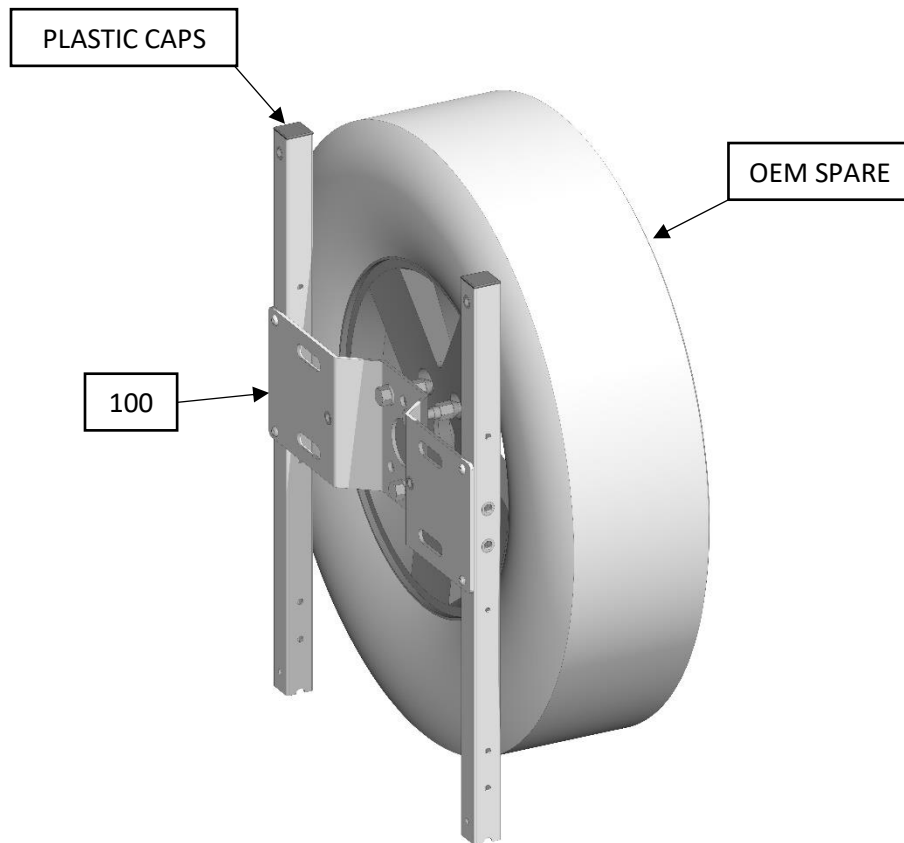


FIG. 1B

FIG. 1B SHOWS THE H-FRAME PROPERLY INSTALLED ON THE OEM SPARE TIRE.

NOTE: WE RECOMMEND THAT THE H-FRAME ASSEMBLY (ITEM 100) IS INSTALLED ON THE SPARE TIRE PRIOR TO THE INSTALLATION OF THE BASKET ASSEMBLY (ITEM 102) AND TABLE (ITEM 101).

NOTE: CORRECT INSTALLATION OF THE H-FRAME WILL HAVE THE PLASTIC CAPS AT THE TOPS OF THE VERTICAL TUBES AND THE OPENINGS OF THE VERTICAL TUBES AT THE BOTTOM.

NOTE: COVER PLATE (ITEM 103 NOT SHOWN) CAN NOW BE INSTALLED.

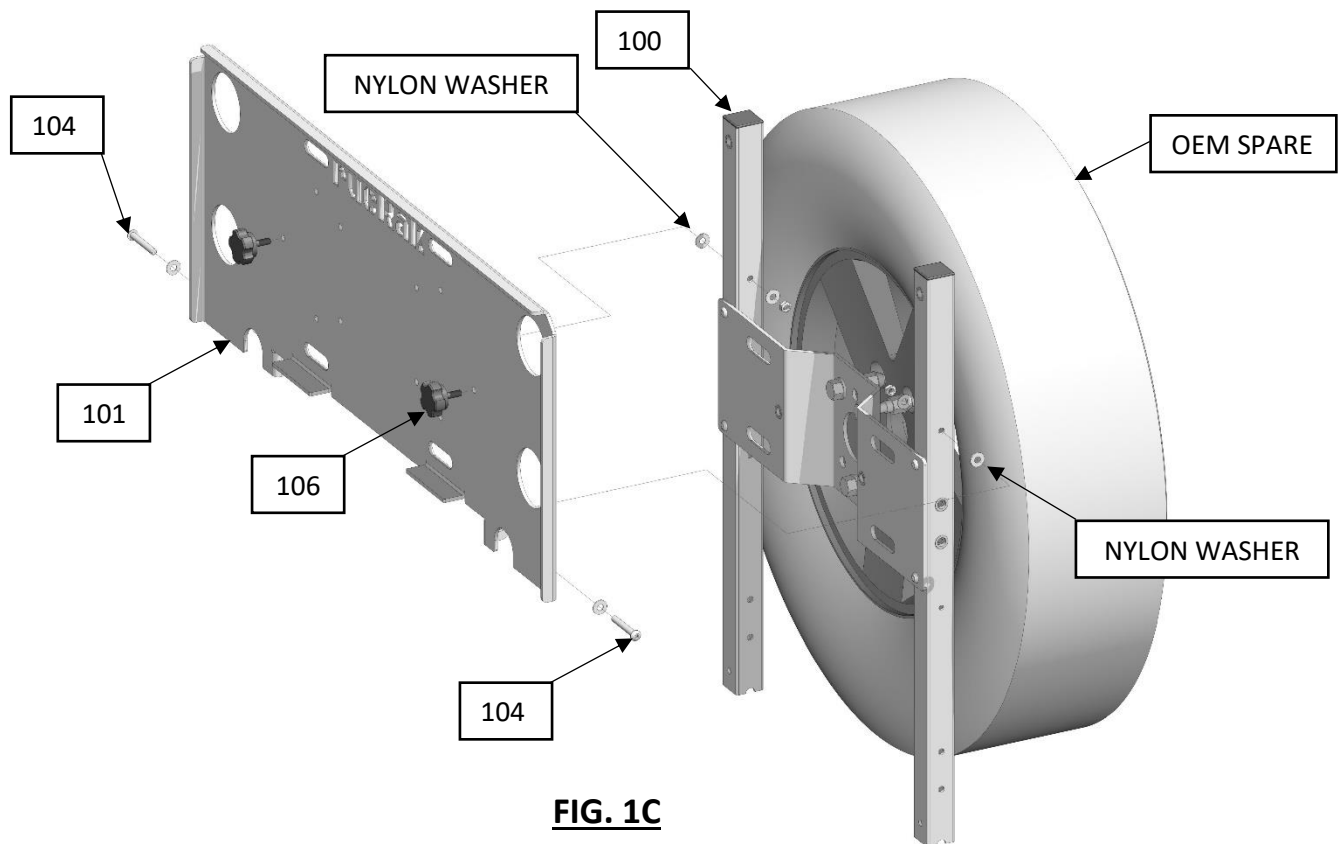


FIG. 1C

FIG. 1C IS THE INSTALLATION OF THE TABLE (ITEM 101) TO THE H-FRAME (ITEM 100).

STEP 1: ALIGN THE HINGES OF THE TABLE (ITEM 101) WITH THE HOLES ON THE VERTICLE TUBES (ITEM 100) AS SHOWN AND INSTALL THE INCLUDED HARDWARE SET (ITEM 104).

TIP! WE HAVE FOUND THAT IT MAY BE EASIER TO INSTALL BY HANGING THE TABLE ON THE H-FRAME TUBES USING THE THREADED KNOBS (ITEM 106) PRIOR TO ALIGNING THE HINGES WITH THE HOLES ON THE H-FRAME. DO NOT TIGHTEN THE KNOBS SO THAT THERE IS MOVEMENT NEEDED TO HELP WITH THE HARDWARE INSTALLATION (ITEM 104).

NOTE: THE NYLON WASHER INCLUDED WITH THE HARDWARE SET (ITEM 104) **MUST ALWAYS** BE LOCATED BETWEEN THE MOVING PARTS OF THE TABLE HINGE (ITEM 101) AND THE VERTICLE TUBES (ITEM 100). WE UNDERSTAND THAT THIS WILL BE A LITTLE BIT TRICKY TO INSTALL, BUT JUST TAKE YOUR TIME AND YOU'LL GET IT! CONTACT US IF YOU HAVE ANY PROBLEMS WITH THIS INSTALLATION PROCESS.

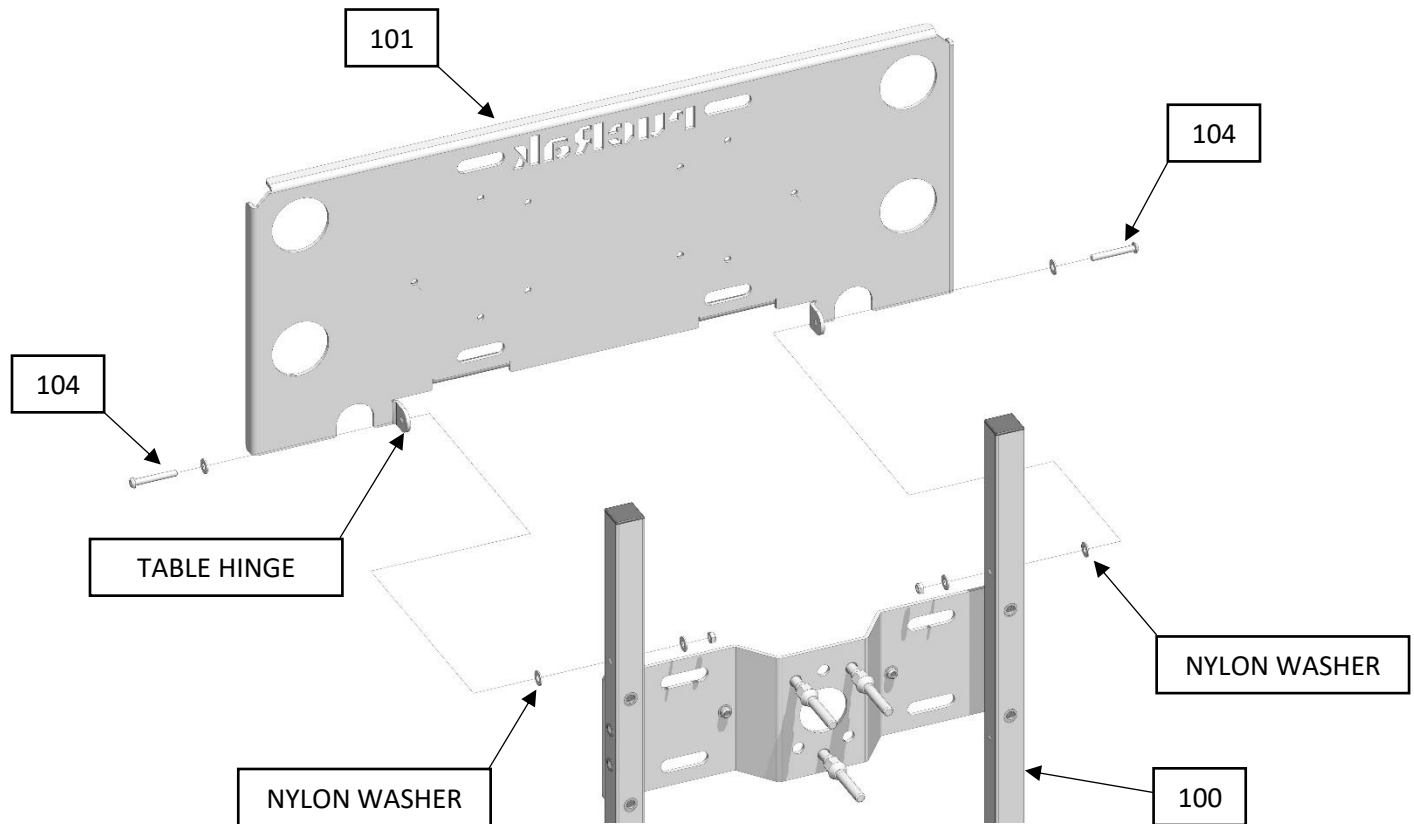


FIG. 1D

FIG. 1D IS ANOTHER VIEW OF THE TABLE (ITEM 101) TO THE H-FRAME (ITEM 100) INSTALLATION. ALL STEPS BELOW ARE REPEATED FROM FIG. 1C.

STEP 1: ALIGN THE HINGES OF THE TABLE (ITEM 101) WITH THE HOLES ON THE VERTICLE TUBES (ITEM 100) AS SHOWN AND INSTALL THE INCLUDED HARDWARE SET (ITEM 104).

TIP! WE HAVE FOUND THAT IT MAY BE EASIER TO INSTALL BY HANGING THE TABLE ON THE H-FRAME TUBES USING THE THREADED KNOBS (ITEM 106) PRIOR TO ALIGNING THE HINGES WITH THE HOLES ON THE H-FRAME. DO NOT TIGHTEN THE KNOBS SO THAT THERE IS MOVEMENT NEEDED TO HELP WITH THE HARDWARE INSTALLATION (ITEM 104).

NOTE: THE NYLON WASHER INCLUDED WITH THE HARDWARE SET (ITEM 104) **MUST ALWAYS** BE LOCATED BETWEEN THE MOVING PARTS OF THE TABLE HINGE (ITEM 101) AND THE VERTICLE TUBES (ITEM 100). WE UNDERSTAND THAT THIS WILL BE A LITTLE BIT TRICKY TO INSTALL, BUT JUST TAKE YOUR TIME AND YOU'LL GET IT! CONTACT US IF YOU HAVE ANY PROBLEMS WITH THIS INSTALLATION PROCESS.

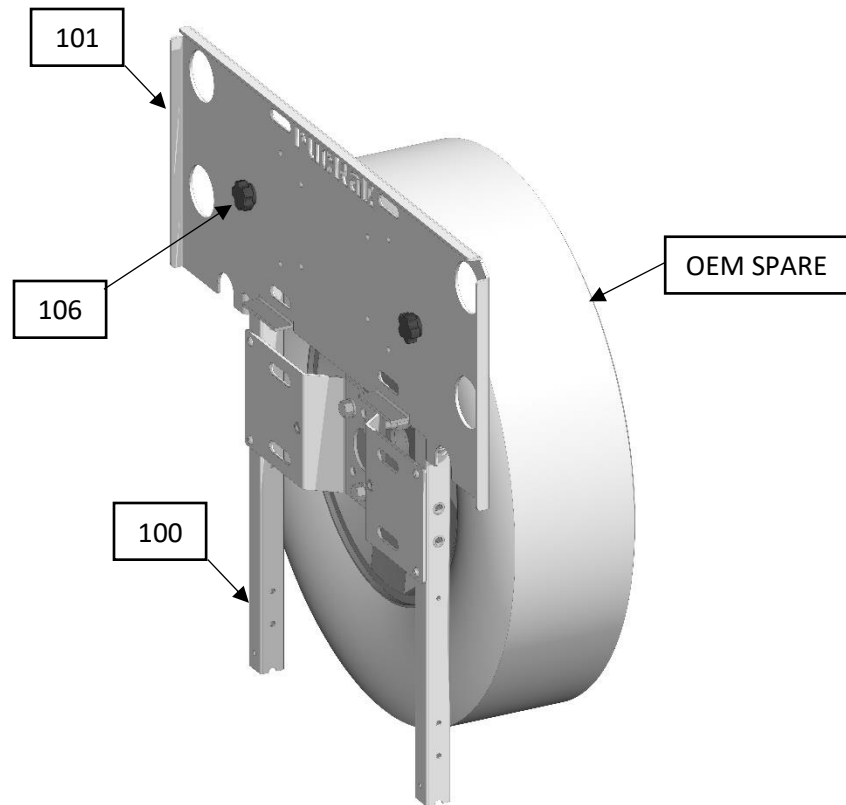


FIG. 1E

FIG. 1E SHOWS THE TABLE (ITEM 101) PROPERLY INSTALLED ON THE H-FRAME ASSEMBLY (ITEM 100) IN THE STORED POSITION.

NOTE: PRIOR TO TIGHTENING ALL HARDWARE, TEST THE MOVEMENT OF THE TABLE AND MAKE SURE THE THREADED KNOBS (ITEM 106) WILL EASILY PASS THROUGH THE HOLES IN THE TABLE TO THREAD INTO THE NUTSERTS ON THE VERTICAL TUBES OF THE H-FRAME (ITEM 100).

FIG. 1F IS THE INSTALLATION OF THE BASKET ASSEMBLY (ITEM 102) TO THE H-FRAME (ITEM 100).

STEP 1: ALIGN THE HINGES OF THE BASKET ASSEMBLY (ITEM 102) WITH THE HOLES ON THE VERTICAL TUBES (ITEM 100) AS SHOWN AND INSTALL THE INCLUDED HARDWARE SET (ITEM 104).

TIP! WE HAVE FOUND THAT IT MAY BE EASIER TO INSTALL BY HANGING THE BASKET ASSEMBLY ON THE H-FRAME TUBES USING THE QUICK RELEASE PINS (ITEM 105) IN THE STORED POSITION PRIOR TO ALIGNING THE HINGES WITH THE HOLES ON THE H-FRAME. BY DOING SO THERE IS MOVEMENT NEEDED TO HELP WITH THE HARDWARE INSTALLATION (ITEM 104).

NOTE: THE NYLON WASHER INCLUDED WITH THE HARDWARE SET (ITEM 104) **MUST ALWAYS** BE LOCATED BETWEEN THE MOVING PARTS OF THE BASKET ASSEMBLY HINGE (ITEM 102) AND THE VERTICAL TUBES (ITEM 100). WE UNDERSTAND THAT THIS WILL BE A LITTLE BIT TRICKY TO INSTALL, BUT JUST TAKE YOUR TIME AND YOU'LL GET IT! CONTACT US IF YOU HAVE ANY PROBLEMS WITH THIS INSTALLATION PROCESS.

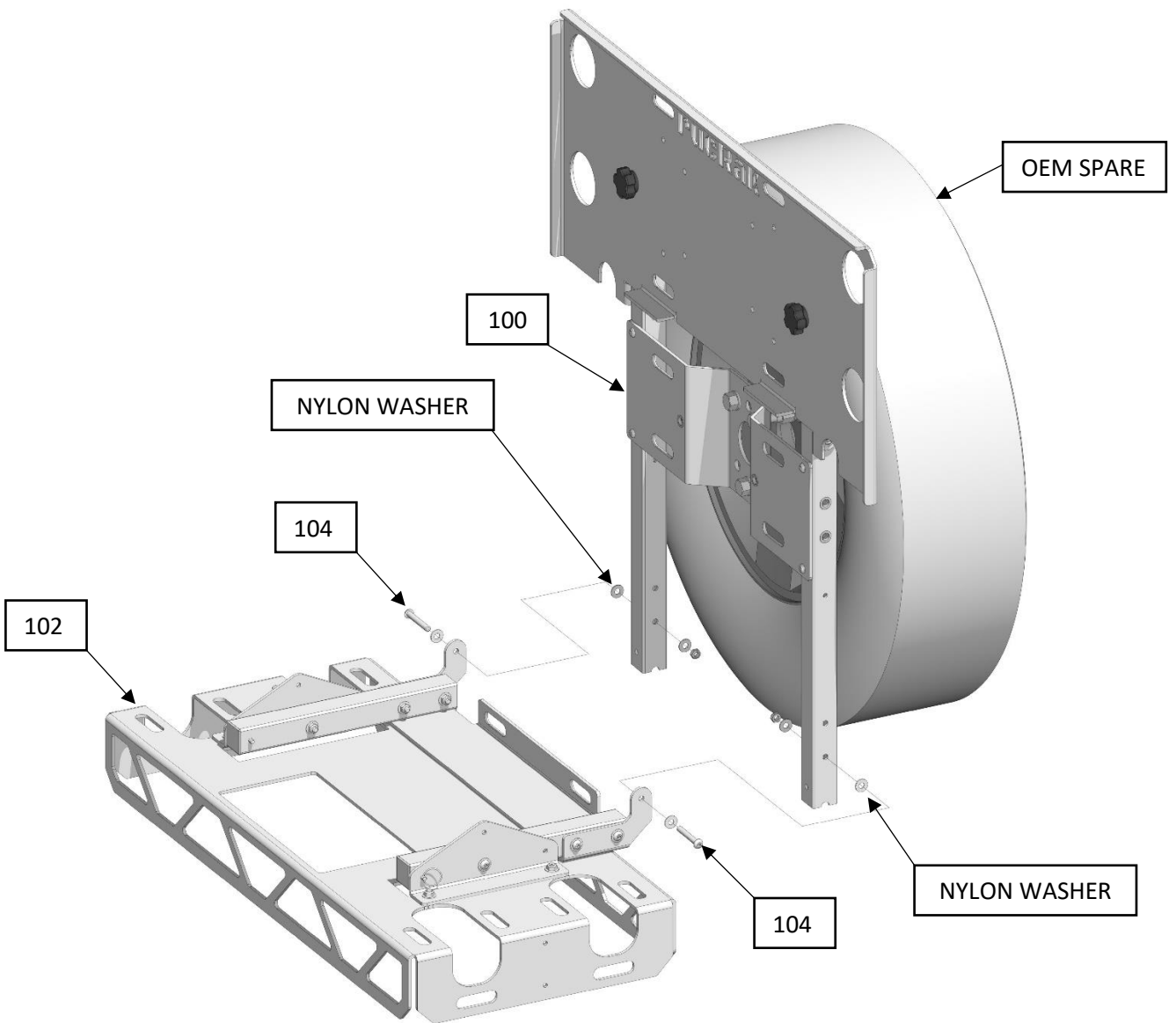


FIG. 1F

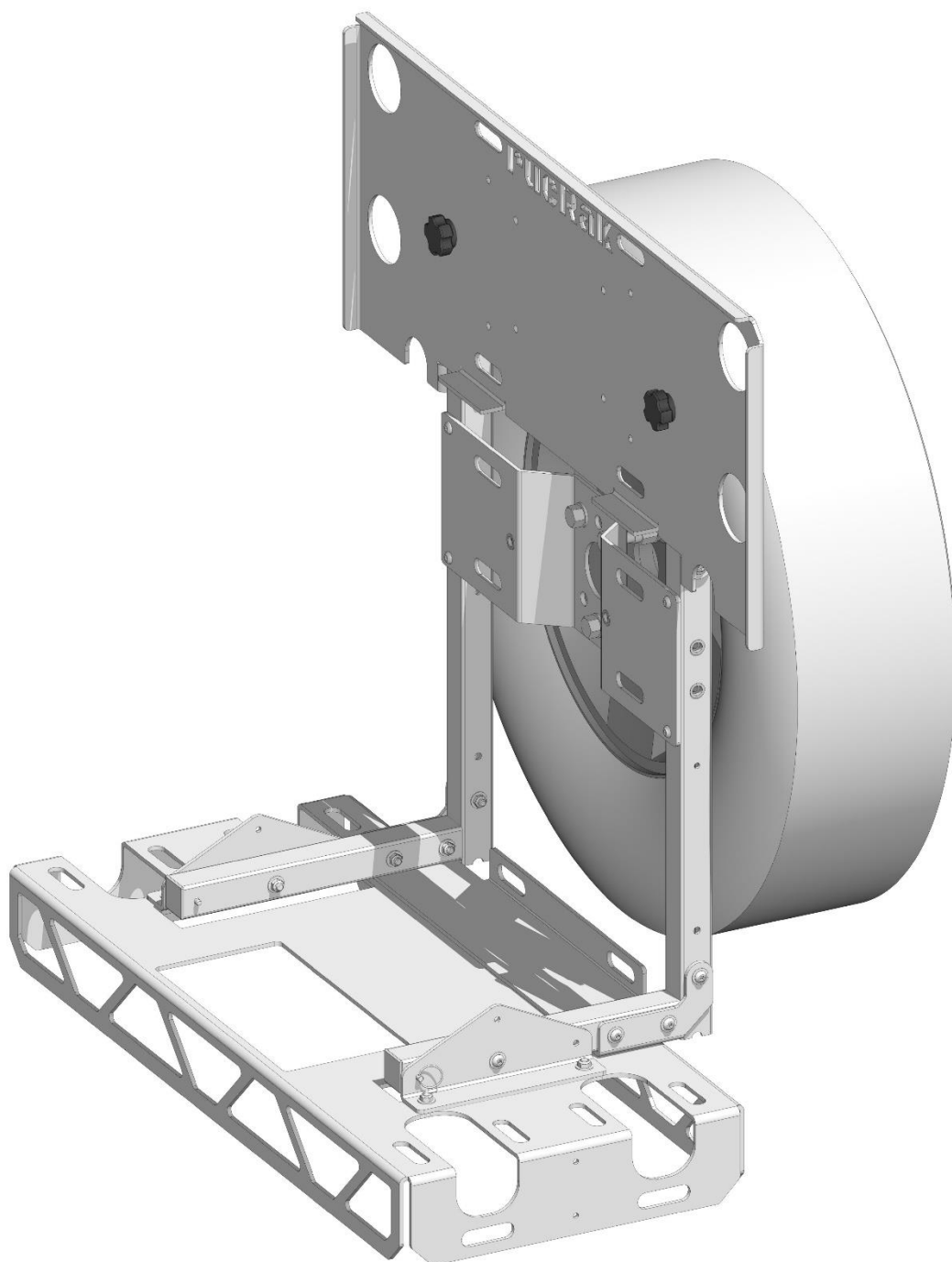


FIG. 1G

FIG. 1G SHOWS ALL ITEMS ASSEMBLED. THE BASKET SHOWN IN **FIG. 1G** IS IN THE BIKE RACK POSITION.

PLEASE REFER TO OUR VIDEOS ON OUR WEB SITE FOR INSTRUCTIONS ON HOW TO OPERATE THE MULTIPURPOSE RACK. WE WILL RELEASE UPDATES AND VIDEOS OFTEN SO PLEASE VISIT US REGULARLY TO KEEP UP-TO-DATE ON ALL THINGS RUCRAK!

WE HOPE YOU WILL ENJOY YOUR NEW MULTIPURPOSE RACK SYSTEM!