



LIGNUMVITAE KEY FILL

INDIAN KEY FILL

TEA TABLE FILL

MM 78

MM 79

MM 79.6

MM 77.7

THE VILLAGE OF ISLAMORADA

"THE FILLS" VISION MASTER PLAN | DISCUSSION WORKSHOP



THE FILLS
MASTER PLAN



+ eph

BASIS OF DESIGN

- A) FDOT SUBLEASE AGREEMENT
- B) FDEP SUBLEASE AGREEMENT
- C) STAKEHOLDER INTERVIEWS
- D) QUESTIONNAIRE SURVEY
- E) GREEN RED DOT EXERCISE
- F) PREVIOUS COUNCIL “WISH LIST”



BASIS OF DESIGN | FDOT/FDEP SUBLEASE AGREEMENT



VILLAGE TO MANAGE PREMISES FOR:

- Conservation & Protection of natural and historic resources
- Resource based public outdoor recreation
- Prepare Vista Plan
- FDEP will not allow work to be performed in water of the state unless tied to boat docks and or kayak launches

TO ALL WORK FOR:

- Access Management
- Pedestrian Management
- Signage within Right-Of-Way
- Parking

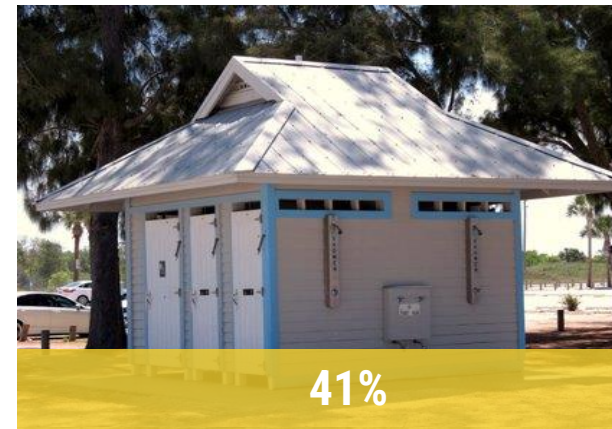


GREEN/RED DOT EXERCISE RESULTS | STAKEHOLDER/SURVEY HIGHLIGHTS

- Open Boat Ramp
- Trim Mangroves
- “Metered” Parking – Limited Parking
- Install Grills – Designated Areas Only
- Permanent Restrooms
- Pedestrian Crossings – Under Bridges & Road Surface
- No Swim Zone Close To Boat Ramps
- No Overnight Stays/Camping
- Potential Traffic Signals
- Improve Trail
- Overlooks
- Signage
- Exclusive Turn Lanes
- Kayak Ramps
- Pavilions
- Offer Sea Level Rise Option
- Attractive Barriers (Roadway)
- Consolidate Access Points
- Improve Parking and Safety
- No Passing Zone



GREEN/RED DOT EXERCISE RESULTS | STRUCTURES – PAVILIONS & RESTROOMS



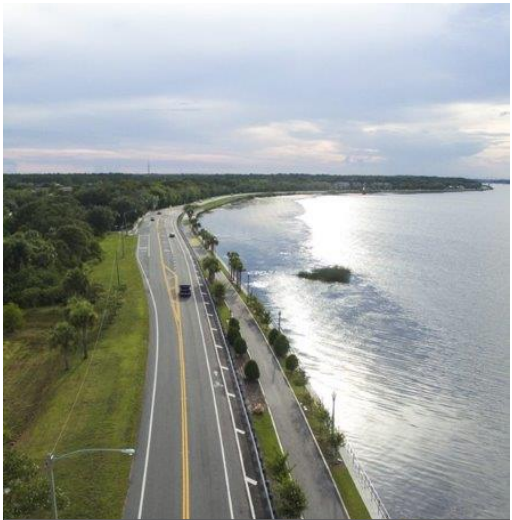
- ADDITIONAL COMMENTS:**
- Unisex Restrooms/
 - Paid Facilities



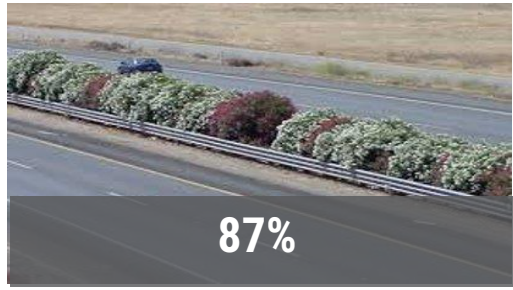
GREEN/RED DOT EXERCISE RESULTS | BARRIERS



100%



92%



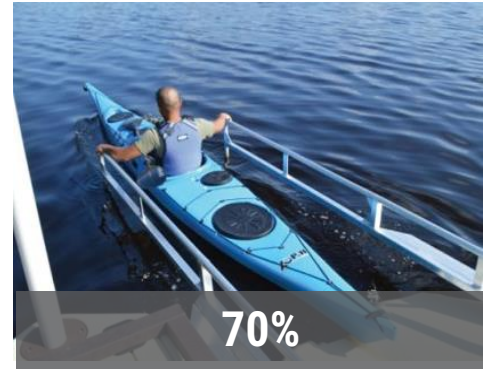
87%



57%



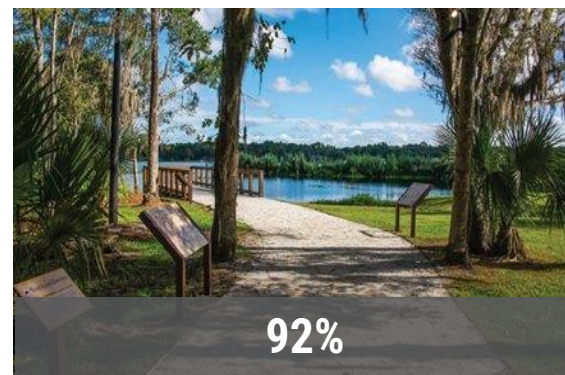
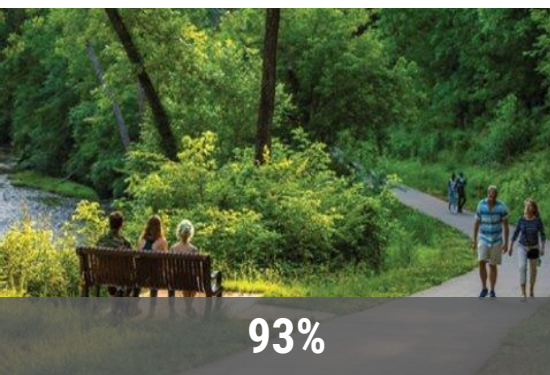
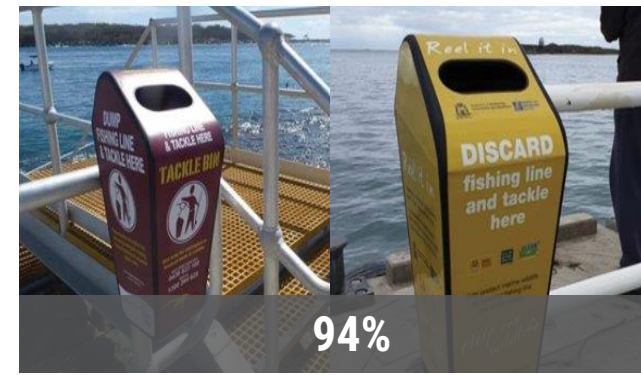
GREEN/RED DOT EXERCISE RESULTS | ACCESS & SAFETY



THE VILLAGE OF ISLAMORADA
"THE FILLS" VISION MASTER PLAN | CONCEPT REVIEW



GREEN/RED DOT EXERCISE RESULTS | TRAIL ENHANCEMENTS



THE VILLAGE OF ISLAMORADA
"THE FILLS" VISION MASTER PLAN | CONCEPT REVIEW



PREVIOUS BASIS OF DESIGN | PREVIOUS COUNCIL “WISH LIST”

- 1. Install Barrier along US1 (12' Shoulder)
- 2. Install access gates to “No Parking” areas
- 3. Informational signs with rules (discuss the rules wanted)
- 4. Paid Parking (app-based parking system)
- 5. Asphalt parking spaces with stripping signs
- 6. Make Indian Key boat ramp area a “No Swimming Zone”
- 7. Project for permanent boat ramp with launching dock (Grant Funded)
- 8. Bathroom facilities at each parking location
- 9. Install charcoal grills at populated areas (excluding Indian Key boat ramp)
- 10. Install of additional landscaping (request an FDOT funded project)
- 11. Vista/Viewing lookout piers
- 12. Pedestrian underpasses under the bridges
- 13. Move Information sign at Indian Key boat ramp
- 14. Access gate at boat ramp (limit use from sunrise to sunset)





LIGNUMVITAE KEY FILL

INDIAN KEY FILL

TEA TABLE KEY FILL

PASSIVE RECREATION FILL

- Kayak Launch Areas
- Pavilions
- Trolley Stop
- One Vehicle Access Point Per Side
- Limited Parking
- Shoreline Restoration
- Mangrove Restoration
- Restrooms
- Trail Realignment

ACTIVE RECREATION FILL

- Boat Ramp
- Kayak Launch Areas
- Trolley Stop
- Pavilions
- Trail Realignment
- Signage
- Restrooms
- Limited Parking

PASSIVE RECREATION FILL

- Kayak Launch Aerials
- Pavilions
- Trolley Stop / Scenic Overlook
- Limited Parking
- Trail Realignment





LIGNUMVITAE KEY FILL

INDIAN KEY FILL

TEA TABLE KEY FILL

NON-VEHICULAR FILL

- No Parking/Vehicle Access
- No Parking/Restrooms
- Closure of Access Points
- Mangrove and Shoreline Restoration
- Signage
- No Kayak Launch Areas

ACTIVE RECREATION FILL

- Boat Ramp
- Kayak Launch Areas
- Trolley Stop
- Pavilions
- Trail Realignment
- Signage
- Restrooms
- Limited Parking

GATEWAY FILL

- Scenic Overlook/Trolley Stop
- Limited Parking
- Information Kiosk
- Signage
- Kayak Launch Areas



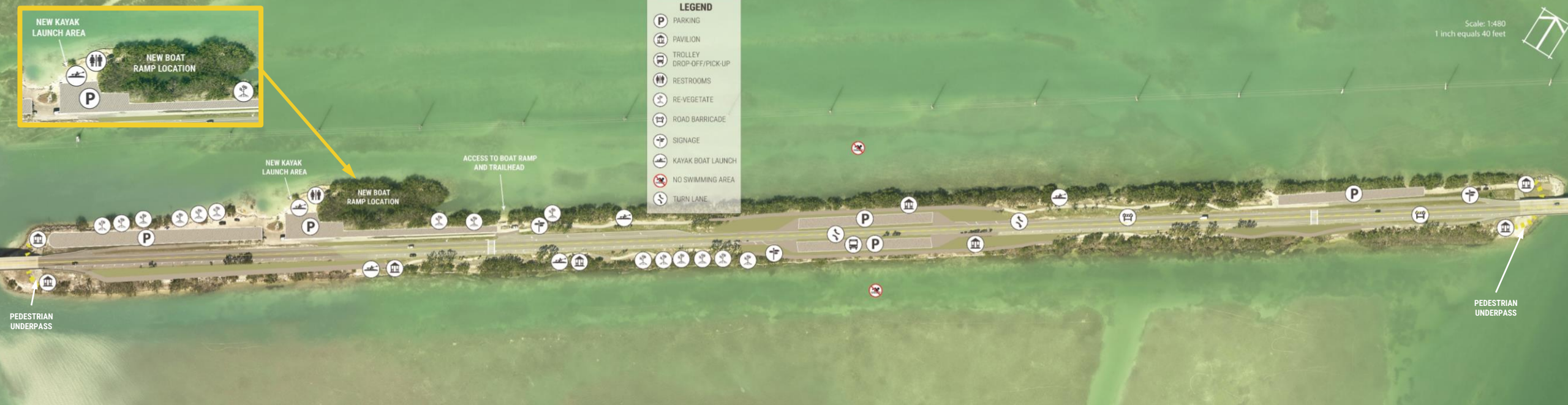
Scale: 1:240
1 inch equals 20 feet



THE VILLAGE OF ISLAMORADA

"THE FILLS" VISION MASTER PLAN | TEA TABLE KEY CONCEPTUAL PROGRAM A

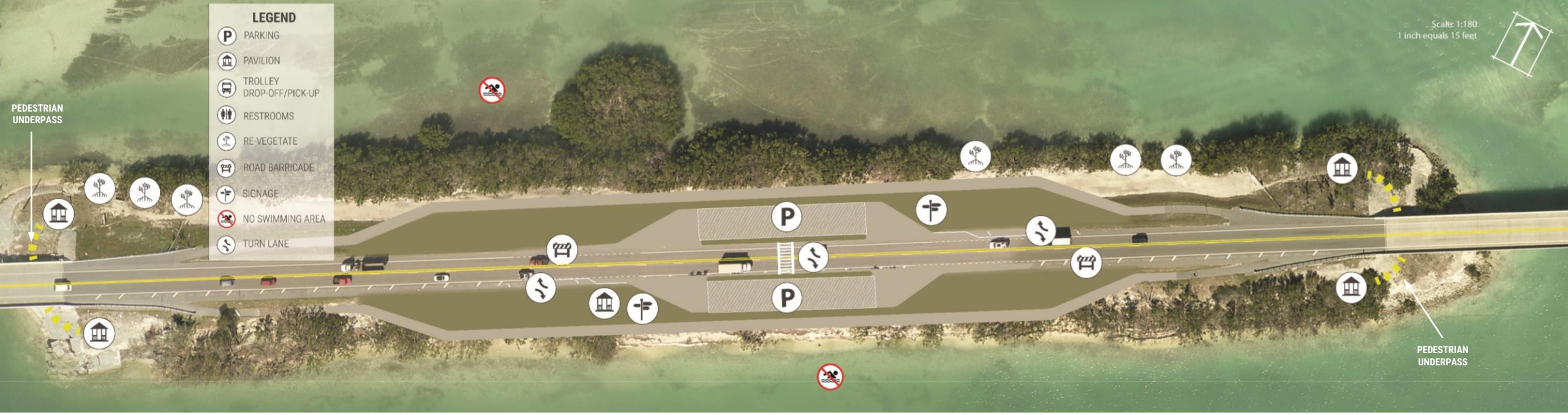






- LEGEND**
- PARKING
 - PAVILION
 - TROLLEY
DROP-OFF/PICK-UP
 - RESTROOMS
 - RE-VEGETATE
 - ROAD BARRICADE
 - SIGNAGE
 - NO SWIMMING AREA
 - TURN LANE

PEDESTRIAN UNDERPASS



PEDESTRIAN UNDERPASS



THE VILLAGE OF ISLAMORADA

"THE FILLS" VISION MASTER PLAN | LIGNUMVITAE KEY CONCEPTUAL PROGRAM A



FEEDBACK / SURVEY ON CONCEPTS AND VISION

[OPEN UNTIL FEBRUARY 8TH, 2022](#)



Visit <https://lp.constantcontactpages.com/sv/sYVzFkA/thefillsmasterplan> to Participate

UPDATED VISION / PROGRAM PRESENTATION TO VILLAGE COUNCIL

[FEBRUARY 17TH, 2022](#)



Visit www.thefillsmasterplan.com for More Information

