

# OCEANFRONT ESTATE

---

8381 Lochside Drive, Saanichton, BC



West Coast Living at Its Finest







## OUTSTANDING OCEANFRONT PROPERTY

---

This spectacular estate boasts one of the best views of James Island and Mt. Baker with 128' of lowbank waterfront. Amazing recreation options include cycling out your front gate and water sports from your own walk-on beach and boathouse. Property is well maintained and updated with 6 bedrooms including main floor primary with walk-in closet, 5.5 bathrooms, den, gourmet kitchen with eating area, and separate dining room and living room offering water views and deck access.

Enjoy sunrises and panoramic ocean and mountain views from numerous decks and patios. Stroll the beautifully manicured lawns and gardens or relax by the pond. Spend time in the well-appointed greenhouse or the lovely garden office. Bonus: Keystone Residence Destination travel trailer with three slides and king bed, mid-kitchen, free-standing dinette and large deck.



## PERFECT WEST COAST BEACH HOUSE

---

This outstanding oceanfront gem offers a rare and unique opportunity to enjoy unsurpassed ocean and mountain views. Situated on 1.29 acres, this gated, fully-fenced property offers privacy and tranquility. Also designed for entertaining from the spacious connected decks with water and garden outlooks, to the seaside patio with firepit and custom masonry, and featuring a coveted boathouse rooftop perch. A retreat from the ordinary.

### Property includes in total:

6 Bedrooms | 5.5 Baths | 3,986 Square feet

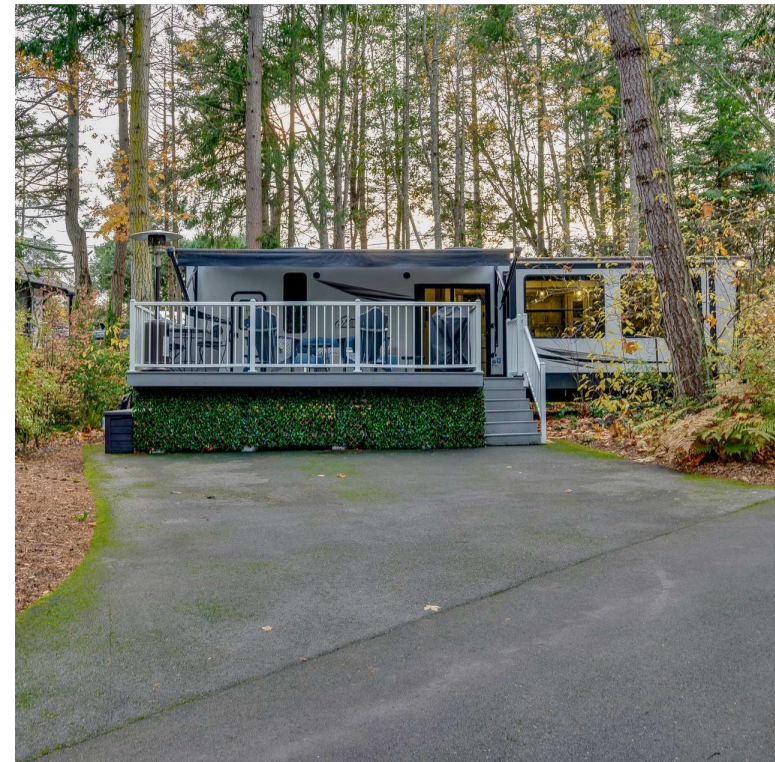






## AMAZING PROPERTY FEATURES

- 6 Beds, 5.5 Baths + Den & Garden Office
- Main floor primary with luxurious ensuite
- Chef's kitchen with granite counter tops
- Separate water-view dining room
- Living room features cozy wood fireplace
- Flexibility for additional accommodations
- 128' of walk-on beach
- Boathouse with rooftop deck
- Double Garage, Carport, Greenhouse, Storage
- 1.29 ac. of landscaped gardens, pond, fruit trees
- 3,000+ sq ft decks/patios; granite masonry
- Bonus: Four Season Premium RV Tiny Home







## CONTACT US TODAY TO SCHEDULE A PERSONAL TOUR

---

Saanich Peninsula is surrounded by the Salish Sea and separated from James Island by Cordova Passage in Haro Strait. One of the driest regions on Vancouver Island and home to many parks and rich farmland. Located just 10 mins from Sidney by the Sea and Victoria International Airport (YYJ) and 30 mins from downtown Victoria, this property is close to local amenities including popular farmstands. Make Heron's Retreat your home!



**John Papaloukas\***  
Personal Real Estate Corporation  
C: 250.812.2589  
E: [john.papaloukas@exprealty.com](mailto:john.papaloukas@exprealty.com)  
[www.jprealstateservices.com](http://www.jprealstateservices.com)



**Marvelee Papaloukas**  
Realtor®  
C: 250-818-2539  
E: [marvelee.papaloukas@exprealty.com](mailto:marvelee.papaloukas@exprealty.com)