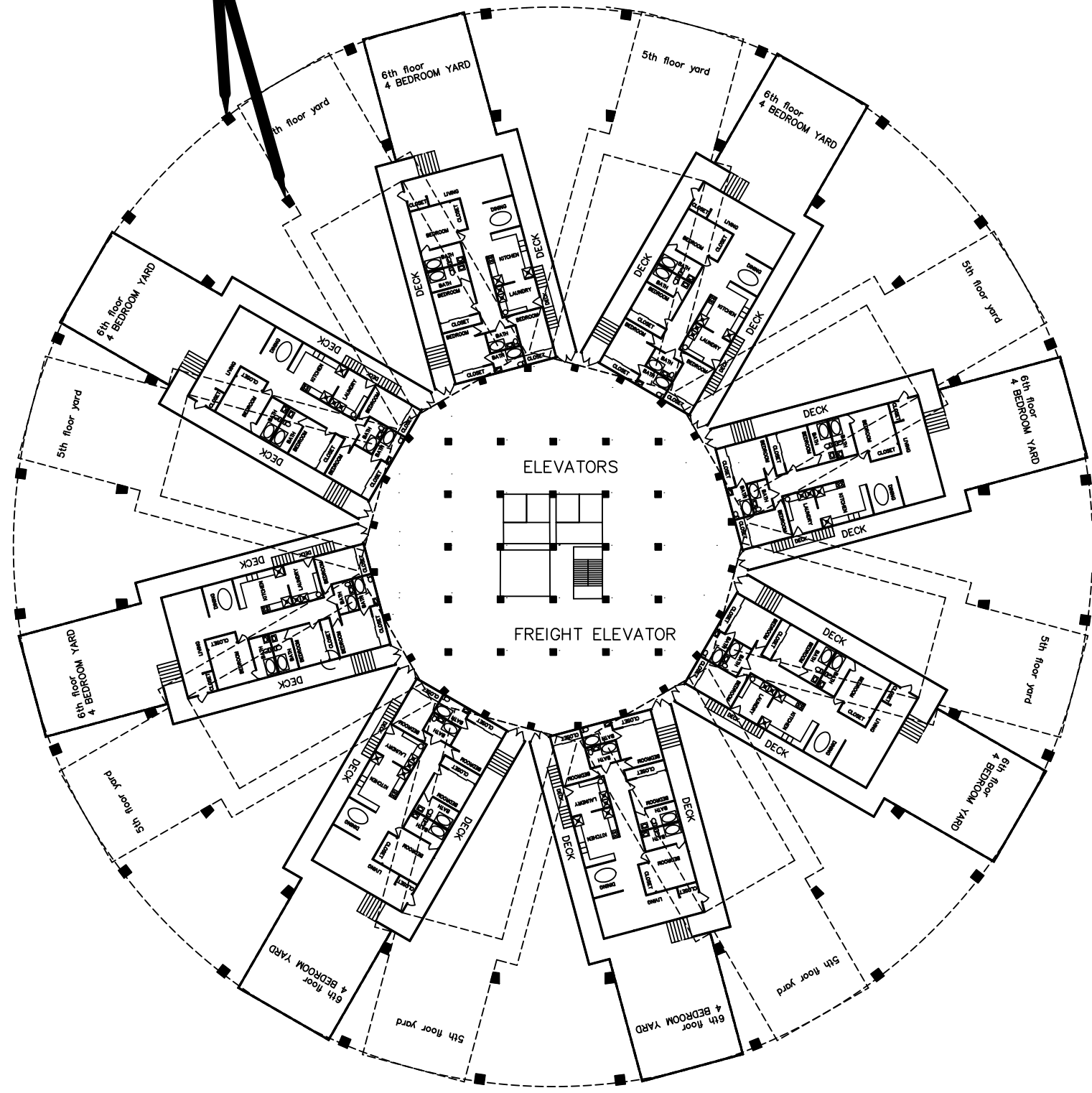


PRESTRESSED CONCRETE
SUPPORT PILLAR (TYP)



THE 4TH TO 6TH FLOORS ARE 4
BEDROOM UNITS. 8 UNITS TO EACH
FLOOR FOR A TOTAL OF 24 UNITS WITH
A TOTAL OF 120 RESIDENTS. NOTE THAT
EACH UNIT HAS A YARD OPEN TO THE
SKY WITH NO STRUCTURE ABOVE THE
YARD

FOURTH TO SIXTH FLOORS