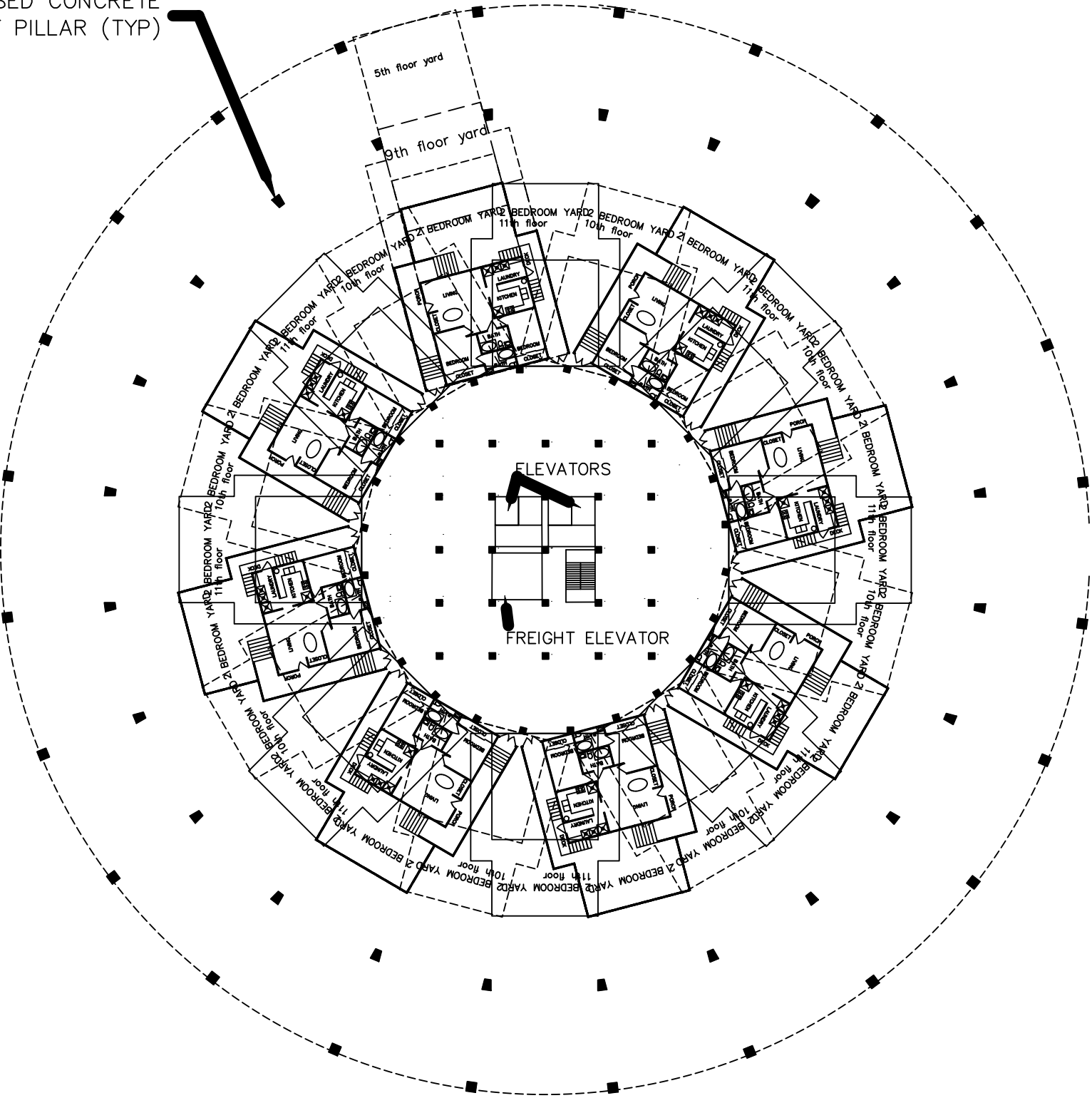


PRESTRESSED CONCRETE
SUPPORT PILLAR (TYP)



THE 10TH TO 12H FLOORS ARE 2
BEDROOM UNITS. 8 UNITS TO EACH
FLOOR FOR A TOTAL OF 24 UNITS WITH
A TOTAL OF 72 RESIDENTS. NOTE THAT
EACH UNIT HAS A YARD

TENTH TO TWELVE FLOORS