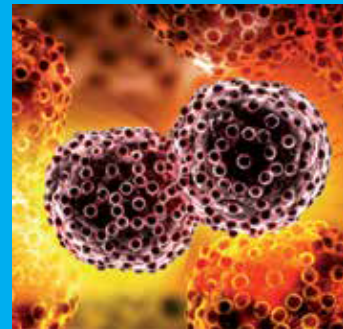
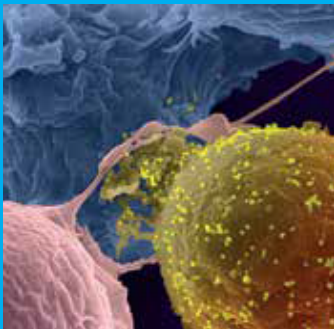


## QATAR

*More than two decades in diagnostic services*





## Micro Health Laboratories

**Micro Health Laboratories (MHL)** is a distinctive name in the field of clinical laboratory diagnosis. As a provider of innovative laboratory services in different countries, its name reflects advanced technology, uncompromised quality and incomparable customer care.

**MHL** possesses high quality infrastructure which is on par with many international quality reference institutions. With more than two decades in providing diagnostic services, **Micro Health Laboratories** will continue to strive hard for excellence and for precious life.

### Vision

To be a comprehensive center of excellence in the field of laboratory medicine and pathology.

### Mission

To provide quality, reliable, cost effective and faster clinical laboratory services to the people.



**Quality** - **MHL** ensures that all of its works are carried out in accordance with recognized international standards and best possible quality control measures.

**Credibility and Accountability** – **MHL** acts honestly, ethically and impartially at all times and we accept full responsibility for our performances. We ensure that all our reports are accurate and reliable and we uphold our reputation by giving quality and timely reports.

**Innovation and Collaboration** – **MHL** constantly seeks innovative ways to enhance the diagnostic precision and patient care to provide value added services to the patients and physicians. **MHL** strives to work together with collaborative medical institutions around the globe to ensure the availability of unlimited diagnostic test parameters and panels.

**Center of Excellence** - At **MHL** , we aim to become the most reputed and trusted referral laboratory in every aspect of medical laboratory diagnosis.



Welcome to **Micro Health Reference Laboratories (MHL)-Kozhikode !**

**Micro Health Laboratories (MHL)** is a trusted name in the field of Laboratory Medicine and Pathology operating successfully in different countries. This prestigious organization has built its brand name over a period of twenty plus years with effective operation in India, Middle East and the African continent.

Currently, **Micro Health Laboratories (MHL)** is paving its footstep in the capital city of Malabar, Kozhikode by the commencement of a Reference Laboratory which is presumed to be an advanced comprehensive center of excellence in the field of Laboratory Medicine and Pathology. We wish to be an amalgamated center for Laboratory Diagnosis, Research, Education and Training with a panel of leading professional experts from the various departments of Lab. Med. and Path.

Reference laboratories are of key prominence in healthcare community. The selection of a reference laboratory plays a key role in meeting the necessary requirements of practicing physicians. Today, the role of reference laboratory is much in demand as primary laboratories are looking for a value-added partner in providing the advanced diagnostic services and information essential for efficient and cost-effective operation within the healthcare industry. Sometimes, reference laboratories act as an arbitrator when it comes to uncertain or doubtful findings. A high level of proficiency and technical standards in experimental laboratory work are, therefore, the fundamental pre-requisite for any reference laboratory. Providing reliable, precise, quality and timely laboratory results are important for decision making in diagnosis, treatment and to improve patient's outcomes. Provision of easy-to-understand information curated by a team of healthcare professionals with state of the art technologies makes **MHL** unique in its own way.

At **MHL**, we offer clinical laboratory services that span the full depth and breadth of all laboratory specialties to provide exceptional and personalized care and service to each prescribing physician and customer. We will also focus tremendously in medical and public education programs aimed at patient awareness in disease prevention and control. Our social investments will help patients who are unable to afford diagnostic services.

Quality results in a minimum turnaround time (TAT) with the best possible customer care at an affordable tariff will be the goal of **MHL**

On behalf of the entire **Team MHL**, I warmly invite you to explore **Micro Health Laboratories** and to experience our commitment in providing exceptional laboratory services in the field of Laboratory Medicine and Pathology. Meanwhile, if you wish to reach me directly, kindly mail me to **ceo@microhealthcare.com**

Thanking you with great anticipation.

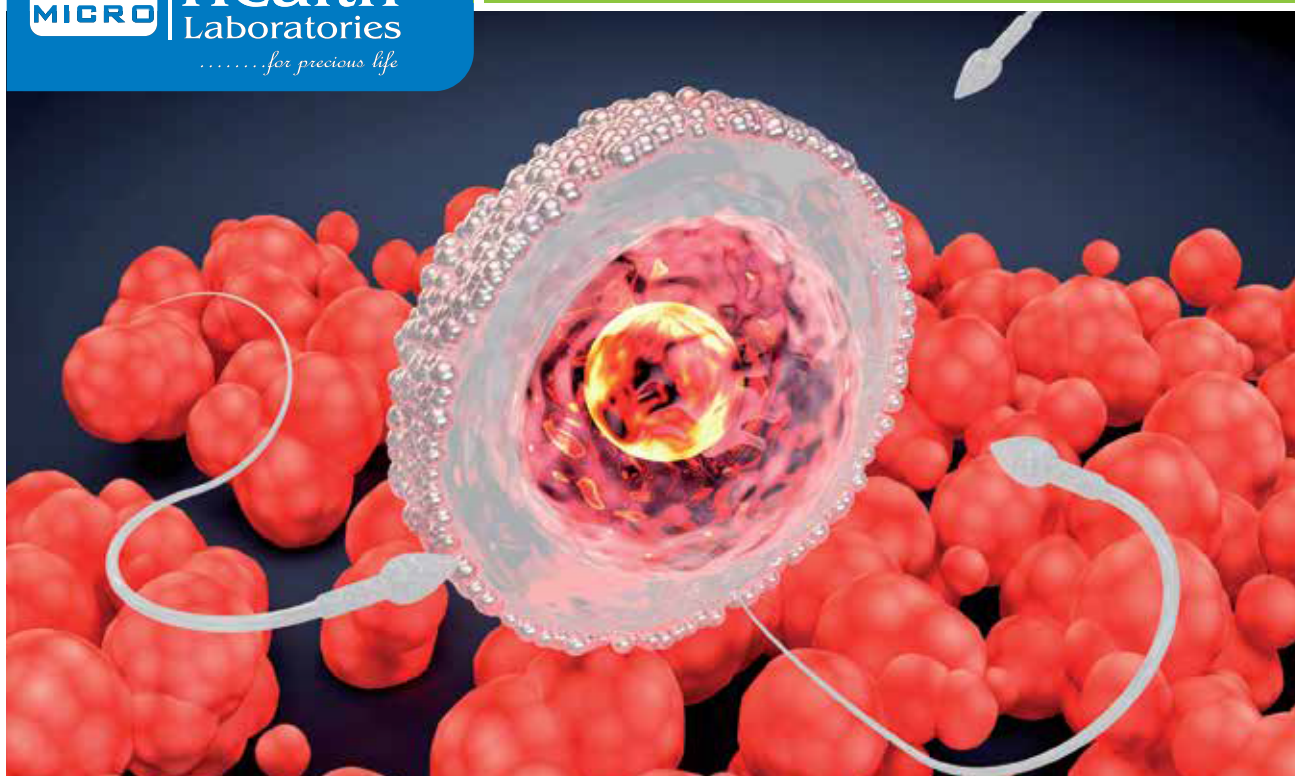
For precious life,

**Noushad CK; MSc. PhD**  
Group CEO



**Micro  
Health**  
Laboratories  
*.....for precious life*

## Departments



### Biochemistry & Endocrinology

The Department of Biochemistry and Endocrinology at **Micro Health Laboratories** performs various qualitative and quantitative examinations of biological fluids such as blood for specific chemical constituents or analytes. These tests are of value in screening and diagnosis of diseases and monitoring the progression of the disease.

The team at the Department of Biochemistry and Endocrinology works closely with various healthcare practitioners for a multidisciplinary approach on updates in test methodologies, reference ranges and other information relevant to laboratory testing of different analytes. The team is also engaged in scientific researches in order to review and develop new laboratory tests or methods which helps create modalities on how various diseases can be detected, managed and treated.

### Fertility & Prenatal Screening

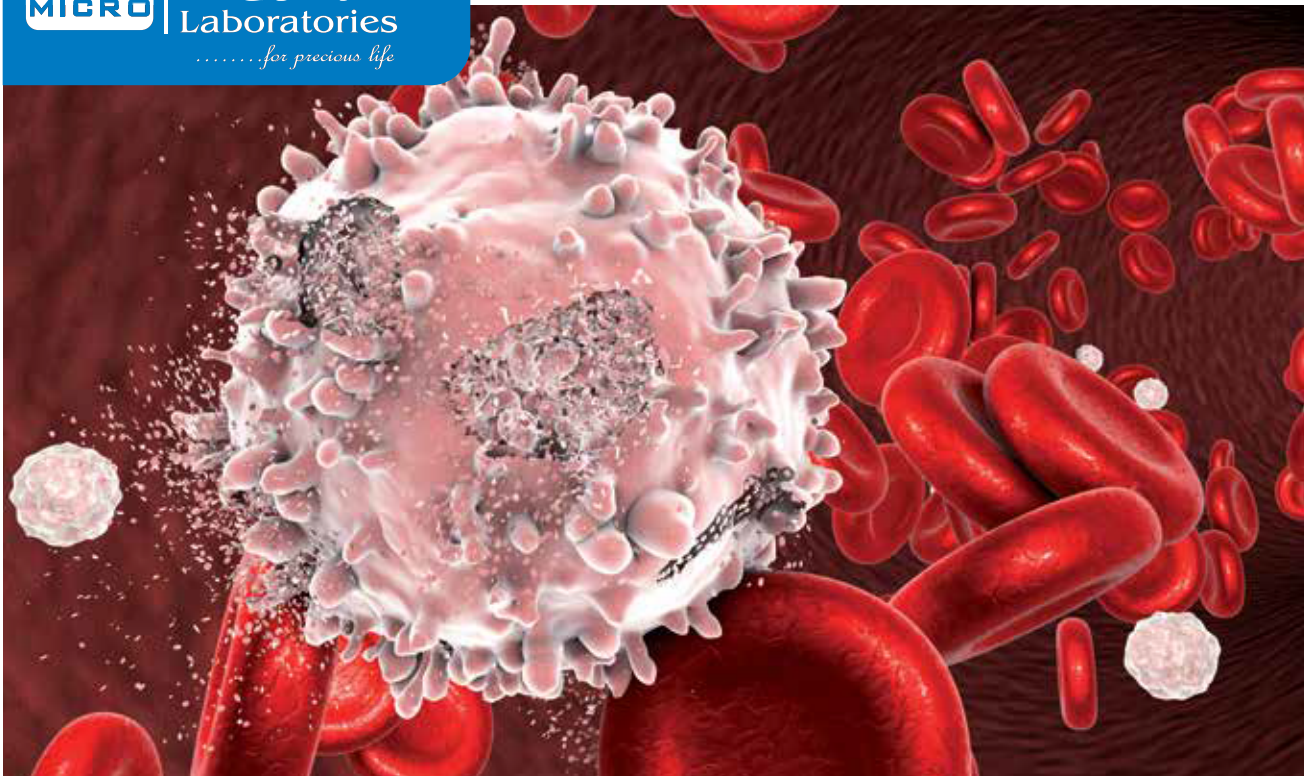
The Fertility and Prenatal Screening Department at **Micro Health Laboratories** focuses on testing reproductive function as well as screening for a variety of disorders or abnormalities in unborn babies. Fertility testing is not exclusive to females since it is known that 50% of infertility cases can be attributed to problems related to male reproductive function. Therefore, fertility testing involves both male and female analysis of reproductive function but the approach for each differs. At **MHL**, we have multiple partnerships with various reproductive clinics and facilities which help us improve further our fertility testing services.

Prenatal screening is tests which are performed throughout the duration of pregnancy. They are composed of a comprehensive collection of procedures used determine the likely occurrence of specific birth defects. A screening test will only provide pregnant mothers the risk or probability of a particular condition from existing. In most cases, when screening tests are found to be positive, confirmatory diagnostic tests are usually carried out in order to provide a definitive diagnosis.



**Micro  
Health**  
Laboratories  
*.....for precious life*

## Departments



### Immunology & Allergy Testing

The Department of Immunology and Allergy provides cutting-edge technology for the most common allergic conditions such as food and drug allergy, atopic dermatitis, asthma, allergic rhinitis, hypersensitivity reactions and others. The department continues to collaborate with many pediatric specialists for better patient medical intervention. In most cases, allergic diseases are diagnosed through a combination of patient detailed history and results of test panels on allergy. Test panels for allergies are especially useful in the diagnosis of allergic diseases in many ways.

### Hematology & Coagulation Studies

The Department of Hematology and Coagulation Studies delivers full service laboratory testing of blood, bone marrow and other body fluids and tissues. Our department covers all aspects of both routine and reference testing for various diseases such as anemia, leukemia, proliferative disorders, coagulation and other related disorders. Most issues related to disorders of the blood usually arise from problems with cell count, cell morphology and cell function. Complications resulting from abnormalities in cell counts usually include common disorders such as anemia and leukemia. Furthermore, defects in cell morphology and function attribute to a multitude of disorders which can be useful to provide a definitive diagnosis to the patient.

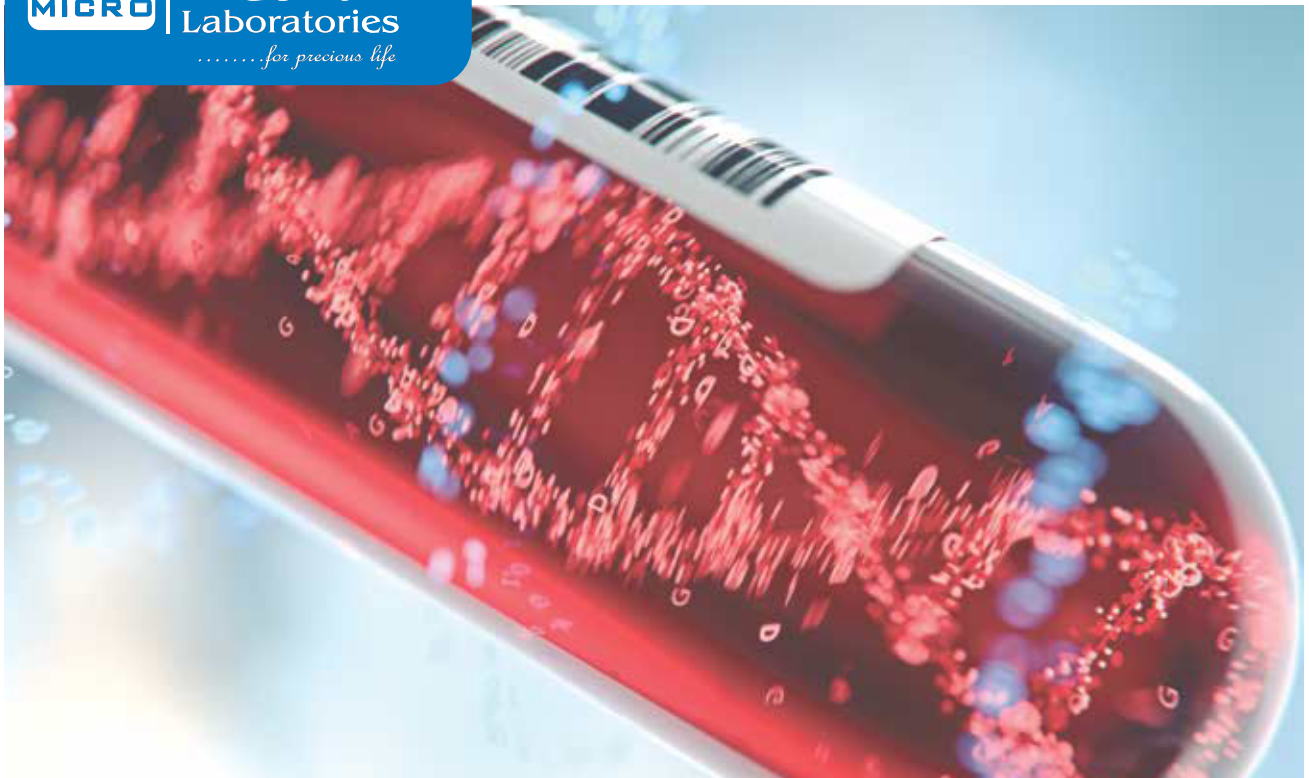
Hematology and Coagulation Department offers services on the following areas:

- Routine hematology
- Routine and specialized coagulation
- Bone marrow and peripheral smear examination
- Body fluids cell count and differential
- Specialized testing for rare blood disorders



**Micro  
Health**  
Laboratories  
*.....for precious life*

## Departments



### Genetics & Genomics

Department of Genetics and Genomics at **MHL** is a specialized area of study where a wide range of genetic studies are conducted which influences inheritance patterns important in the expression of traits.

We utilize the latest genomic tools and systems which are the forefronts in diagnosing diseases by tracing defects in genes and genetic mutations while optimizing therapeutic interventions for to the genetic structure of patients in need. **MHL** continues to develop sophisticated instrumentation and facilities which will enable us to broaden our services pertaining to genetic testing. The department is also open for exciting opportunities for research and development that will enable us to advance in the field of genetics and genomics research. We are partnered with international institutions performing top notch clinical and laboratory genetics services.

### Microbiology & Infectious Diseases

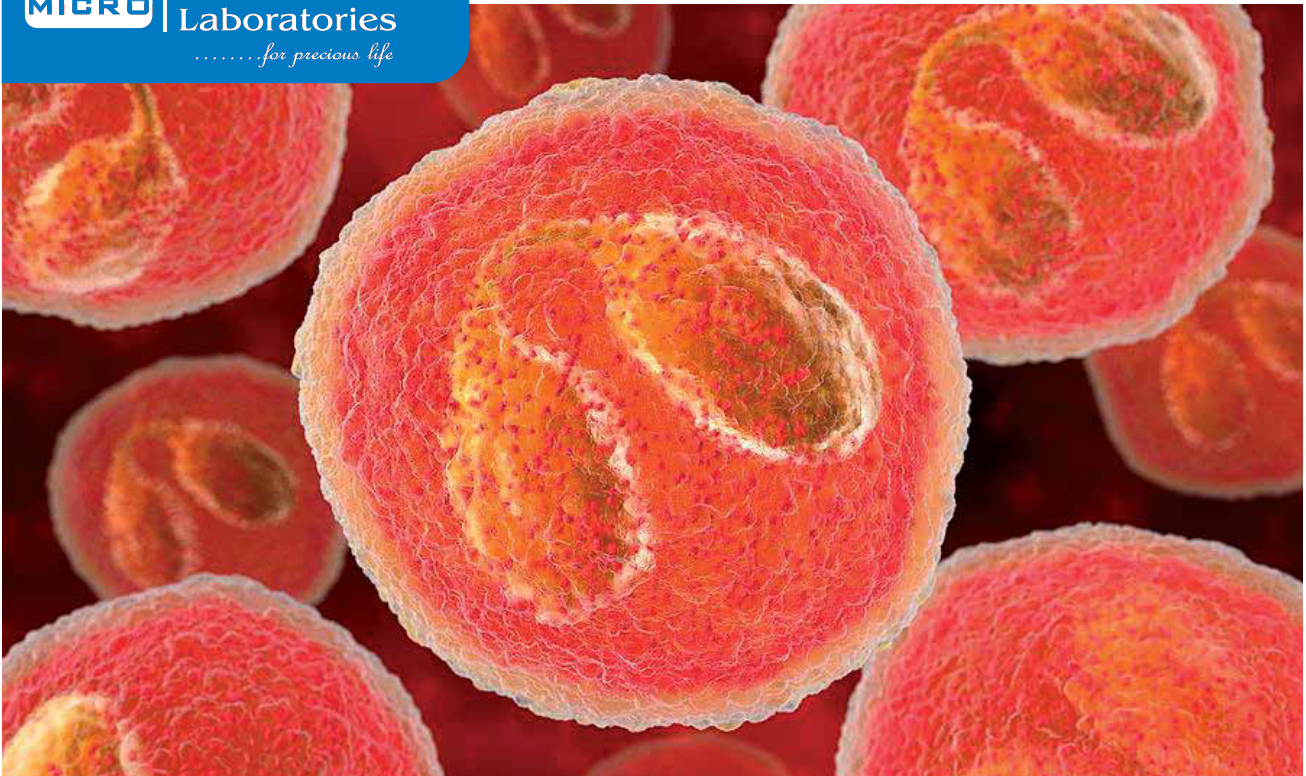
The Microbiology and Infectious Diseases Department specializes in the diagnosis of infectious diseases covering areas in bacteriology, mycology, parasitology and virology. We are constantly monitoring and developing our methodologies in order to provide superior outcomes when it comes to detection, species identification, culture and sensitivity testing.

Furthermore, the continuously rising issue on microbial resistance reflects the greater need to develop novel treatment procedures. That is why, **MHL** keeps track of clinically significant isolates and developed a monitoring system to prevent and control spread of resistant infections. At present, we are moving forward towards improving and evolving our expertise in all areas of conventional and molecular microbiology for routine application and processing of samples for better identification of infectious agents.



**Micro  
Health**  
Laboratories  
*.....for precious life*

## Departments



### Tuberculosis & Fastidious Microbiology

Tuberculosis & Fastidious Microbiology is a specialized area in **Micro Health Laboratories** which focuses on detection, identification, culture and sensitivity of Tuberculosis causing bacteria and other fastidious microorganisms which are not easily cultured using conventional techniques. Fastidious organisms are those organisms that require complex nutritional requirement in their culture media. Simply put, these organisms will only grow when certain specific nutrients and environmental conditions are met. We have created an environment for these types of microorganisms to enable them to be processed for testing. The tests we perform are dynamic which employs methods for initial identification of microorganisms while waiting for a more definitive diagnosis through culture techniques. Fastidious microorganisms usually require longer incubation period while presumptive diagnosis may prove to be of clinical value in the early management of disease conditions.

### Molecular Biology & PCR

The Department of Molecular Biology & PCR specializes in performance of specialized techniques primarily for providing a faster, more definitive detection and identification of causative agents for various diseases. Polymerase Chain Reaction (PCR) technique is the basis of most techniques employed in this department. The diagnosis of causative agents had never been this specific since the introduction of molecular techniques in the diagnostic industry. For many years, standard culture techniques remain to be the cornerstone of microbial detection however, there are various situations where there is a need to consider molecular approaches for testing when efforts to culture bacteria remain in vain or takes too long. This will reflect better prognosis to patients since appropriate treatment regimen maybe provided in the earliest possible time. Molecular diagnostic techniques play a significant role in clinical microbiology but their application does not completely eradicate the need for conventional techniques such as culture and sensitivity. Such assays can be integrated to our routine analyses and will help enhance laboratory diagnostic efficiency.



**Micro  
Health**  
Laboratories  
*.....for precious life*

## Departments



### Medical Imaging\*

The Department of Medical Imaging at **Micro Health Laboratories** offers state-of-the-art clinical radiologic technologies to aid in facilitating the diagnosis of a wide range of diseases. The department operates within internationally accepted standards of modern imaging guidelines and protocols that involves the utilization of high end X – Ray and Ultrasound imaging techniques built in a full scale electronic digital environment.

Our medical imaging services provide comprehensive examinations that accommodates all ages for a wide range of clinical applications and scenarios. Each member of our staff had undergone dedicated and intensive training in radiologic technology to ensure production of high quality information needed for medical intervention.

Internationally accepted safety standards in using radiologic technologies is at the core of our imaging services. Both patients and healthcare providers alike are ensured of their safety while undergoing the services we provide. Overall, we focus on providing high quality, patient-centered care for all medical specialties to assist healthcare practitioners in making fast and accurate diagnosis resulting to better outcomes in patient management.

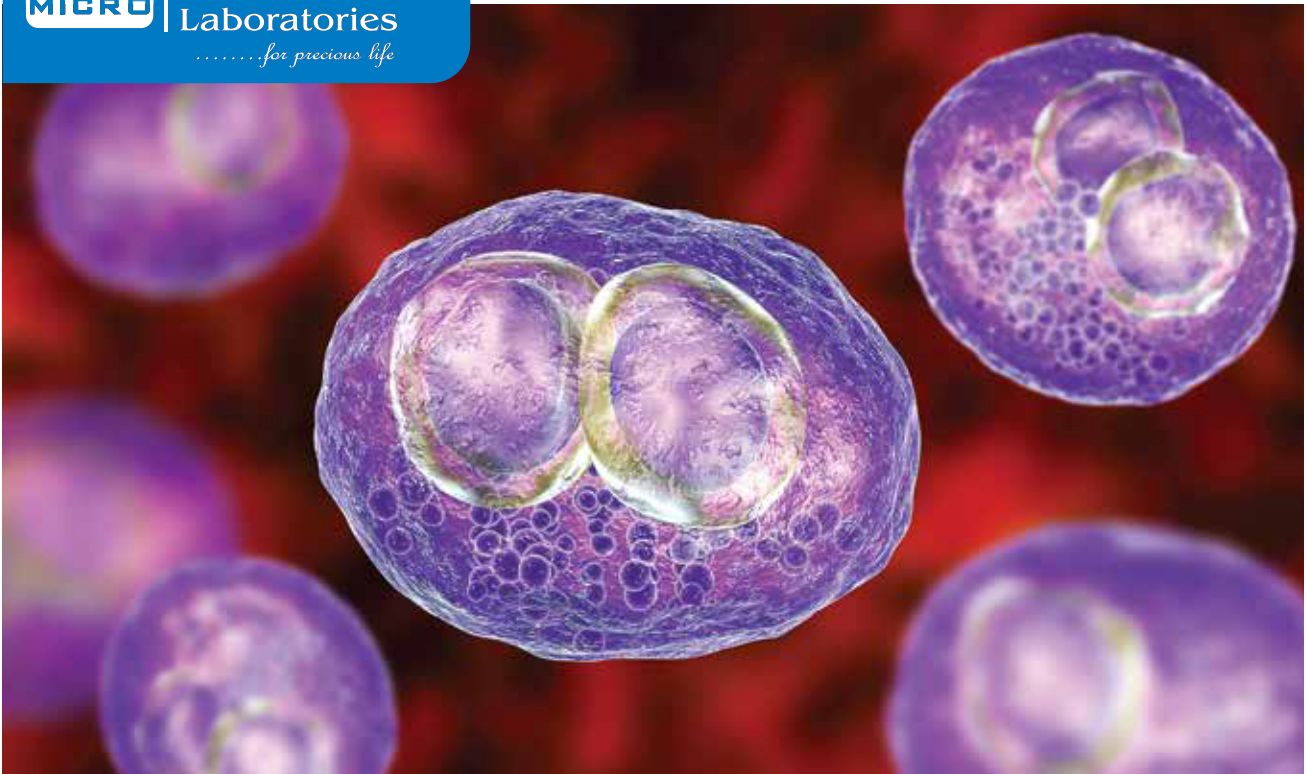
★ Available at specific locations and branches





**Micro  
Health**  
Laboratories  
*.....for precious life*

## Departments



### Drug & Alcohol Testing

The Drug & Alcohol Testing Department mainly focuses on the performance of tests used to detect drugs and alcohol levels in the body. For whatever purpose that we need to conduct these tests, we ensure to uphold our credibility in maintaining confidentiality and credibility in all aspects of testing. Screening tests for drugs will are usually qualitative in nature meaning, you will only get either a positive or negative result. Confirmatory testing on the other hand will allow quantification of analytes present in the sample which helps in determining the appropriate course of action to the patient. Screening tests for the presence of drugs usually employ urine samples but sometimes, other samples maybe required to be submitted for further testing. Methods employed in confirmatory testing usually require more sophisticated instrumentation and training to the staff. We follow strict implementation of protocols for drug and alcohol testing based on local and international laws concerning drug testing and ensure that the same protocol is carefully followed.

### Histo- Cytopathology

The Histopathology Department provides comprehensive cell and tissue diagnostic services to the clients of **Micro Health Laboratories**. The team is led by certified Pathologists and composed of highly qualified and skilled histo-technologists which all aim to deliver the best laboratory services using cutting edge methodology and instrumentation in tissue processing. The department deals with the processing of tissue samples for study under the microscope by qualified healthcare practitioners. Samples sent for tissue processing are treated and analyzed using the appropriate techniques and instrumentation depending on the nature of the sample submitted and combined clinical impression by the physician handling the patient and the Pathologist. The team is constantly trying to develop new ways and methods to perfect the art of tissue processing. We will continue to produce high quality slides while we continue to optimize and reduce resources needed in our processes.



## Quality Assurance

Maintaining quality is always at the heart of what we do. Our well-designed comprehensive Quality Assurance (QA) system allows us to deliver our promise of high quality laboratory testing which is aimed at improving our clients' overall health and wellbeing. Our Quality Assurance (QA) mechanism covers the entire operations of a clinical laboratory from pre-analytic, analytic and post-analytic stages of testing. Furthermore, we are committed to Continuous Quality Improvement (CQI) as we take into consideration all factors affecting our performance such as, process variation and waste elimination, customer satisfaction and faster turnaround time. This then reflects our belief that the best demonstration of quality is our large client base and high retention rate.

## Logistics Support

**Micro Health Laboratories** is proud of its commitment to deliver results to its clients on time. We have designated experienced and trained personnel dedicated to collecting samples right at your doorsteps. Our courier services are equipped with vast experience in providing logistics support over a wide range of as well as release of test reports. We offer both scheduled and on – call collections using temperature-controlled sample transport mechanism in order to maintain sample quality and integrity. To request for a specimen pick up, please contact the local **MHL** branch near you or visit our website for details.

## Cost Effectiveness

Quality reports always come with a price but **MHL** aspires to give quality reports with the best possible affordable tariff. **MHL** performs more than 3000 test parameters in-house and also provides health checkup profiles and customized packages that will also cater the personal needs at affordable tariff.



**Micro  
Health**  
Laboratories  
*.....for precious life*

## Education & Research



### Education & Training

As a leading clinical diagnostic service provider, we at **Micro Health Laboratories** recognize that education and training are central to supporting the delivery of high quality patient care. With a dedicated Medical Education Department offering a wide-range of medical education and training programs and a wide array of continuing medical education activities, **MHL** strive to ensure that the practicing physicians, students, fellows and allied health professionals and other practitioners will get opportunities to acquire the very latest knowledge and best practice, whatever their stage of career. **MHL's** Training Center offers opportunities to learn at every level in a wide variety of laboratory related subjects. Whether a health professional wishing to hone cutting-edge techniques, an employee of an institution interested in acquiring new skills, or a member of the public keen to further develop his/her knowledge, **MHL** can offer expertise in a wide range of training opportunities.

### Research, Development & Innovation (RDI)

**Micro Health Laboratories'** Research, Development, and Innovation (MHL RDI) division's role is to play an integral part in identifying the current challenges, formulating new strategies and approaches and developing procedures and products to address those challenges in the area of clinical laboratory diagnosis. **MHL** will also collaborate for RDI with universities, medical colleges and other healthcare research organizations both nationally and internationally for mutual partnerships. **MHL** will provide research facilities for research scholars and students to undergo their research projects.



**Micro  
Health**  
Laboratories  
*.....for precious life*

## Team MHL



### Team MHL

This is a product of commitment to render uncompromised services to the people approaching to **Micro Health Laboratories**. **Team MHL** is composed of 15 nationalities with more than 20 mother tongues that came together and pledged for a single team. The aim is to provide quality, reliable and cost effective medical laboratory services. The diversity of **Team MHL** makes them unique and effective in every way. **Team MHL** came from different medical specialties and diversified field of studies around the globe that makes the foundation of **MHL**; strong, competent and effective.

### Customer Care

**MHL** always targets to deliver 100% patient and physician satisfaction. It believes in personalized customer care to each patient and prescribing physician. **MHL** ensures that delivered reports are accurate and reliable which in turn helps the clinicians to diagnose and give effective treatment and prognosis to their patients. **MHL** also assures that all the feedbacks, suggestions and complaints are being taken care of, put to record, replied back and used to improve the services.



**Helpdesk:**

Tel : 44697169  
Mob : 44506383

**Central Laboratory (QATAR):**

C-Ring Road  
Building No. 309  
Zone No. 40  
Post Box - 31034  
Doha - Qatar

**Corporate Office (Qatar):**

Building No.309  
Zone No. 40  
Al Darwish Building,  
C-Ring Road  
Doha - Qatar.  
Post Box-31034



microhealthmedicallaboratory

[info@microhealthcare.com](mailto:info@microhealthcare.com)  
[www.microhealthcare.com](http://www.microhealthcare.com)



**Micro  
Health**  
Laboratories  
*.....for precious life*

INDIA | QATAR | DUBAI | GHANA | BANGLADESH

[info@microhealthcare.com](mailto:info@microhealthcare.com)

Help Desk Tel : 44697169, Tel : 44506383  
Fax : 44516822, Po Box : 31034 Doha - Qatar

Branches:  
Al Mammoura | C Ring Road | Duhail  
Tel : 445 960 40 / 41 / 42



[www.microhealthcare.com](http://www.microhealthcare.com)



[info@microhealthcare.com](mailto:info@microhealthcare.com)