

PORT DE PLAISANCE RESORT MARINA MODULAR HOTEL CONCEPTUAL DESIGNS

03/02/20



- 5 STAR STANDARD MODULAR HOTEL
- (144) 35m2 STANDARD SINGLE & DOUBLE ROOMS
- (8) 45m2 JR. SUITES
- (152) TOTAL ROOMS
- 5400m2 TOTAL ROOM AREA
- (2800m2) MARINA VIEW POOL AREA, 520m2 POOL

- (1690m2) 50 VEHICLE ENCLOSED GROUND LEVEL PARKING
- (1690m2) 6 METER HIGH, FIRST FLOOR COMMON USE AREA
- BUILDING ENVELOPED WITH PREFABRICATED RE-ENFORCED CONCRETE FACADE, ROOF AND SIDE
- CLADDING
- DESIGNED AND ENGINEERED FOR COMPLETE BUILDING ENCLOSURE WITH CAT. STORM RATED ELECTRIC SHUTTERS

This drawing represents a design intent and concept only. This document and all associated documents are prepared for a specific site, and incorporate calculations and measurements available at the time of drafting. Without the written permission of the designer, the contents of this document are not to be reproduced or copied in whole or part without the written permission of Jesus Perez Borges. Copyright © 2020.

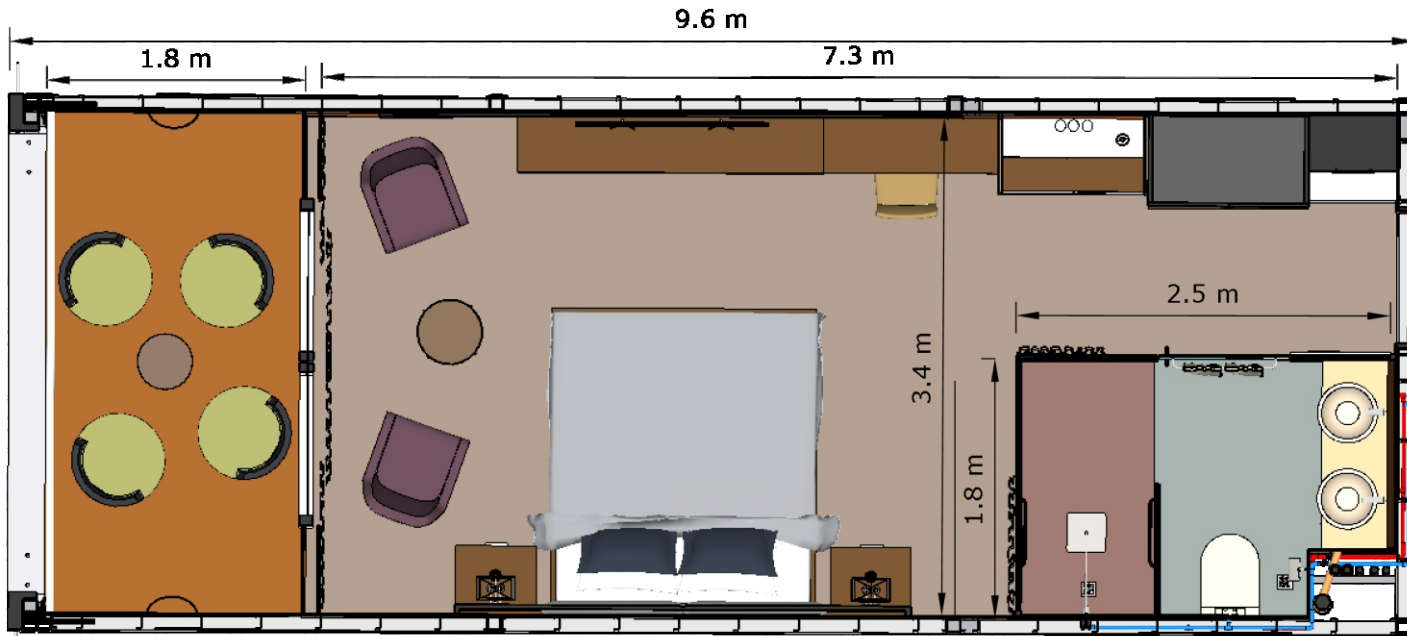
JP BORGES
I D E A T E A M

Port de Plaisance Resort Marina Modular Hotel CDBD SXM
email- jesusperezborges@gmail.com site- thematicdesigner.com 1-829-343-3614

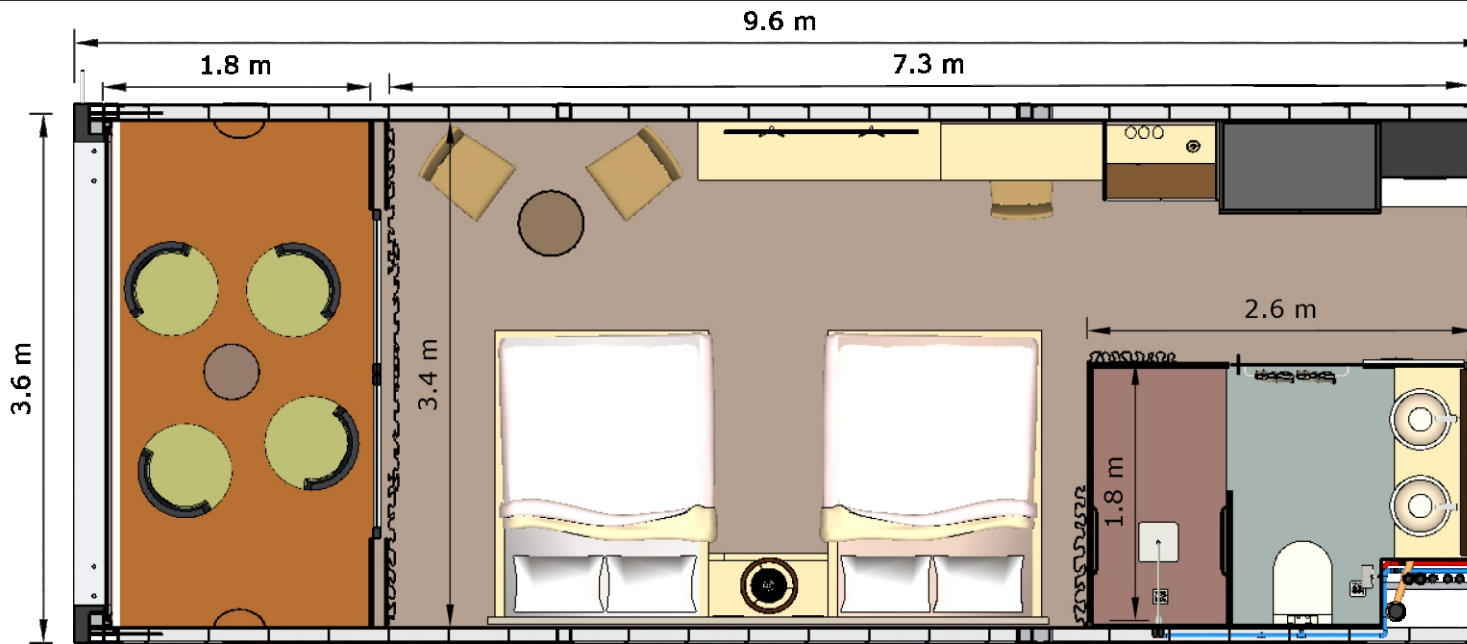
SMART
MODULAR SOLUTIONS
FOR PREFABRICATED CONSTRUCTION BY DESIGN

HOTEL ROOM SIZE AND DISTRIBUTION, 5 STAR RATING MINIMUM STANDARDS

03/02/20



TOP VIEW SINGLE BED ROOM 35m²



TOP VIEW DOUBLE BED ROOM 35m²

This drawing represents a design intent and concept only. This document and all associated documents are prepared for a specific site, and incorporate calculations and measurements available at the time of drafting, without the written permission of the designer. The contents of this document are not to be reproduced or copied in whole or part without the written permission of Jesus Perez Borges. Copyright © 2020.

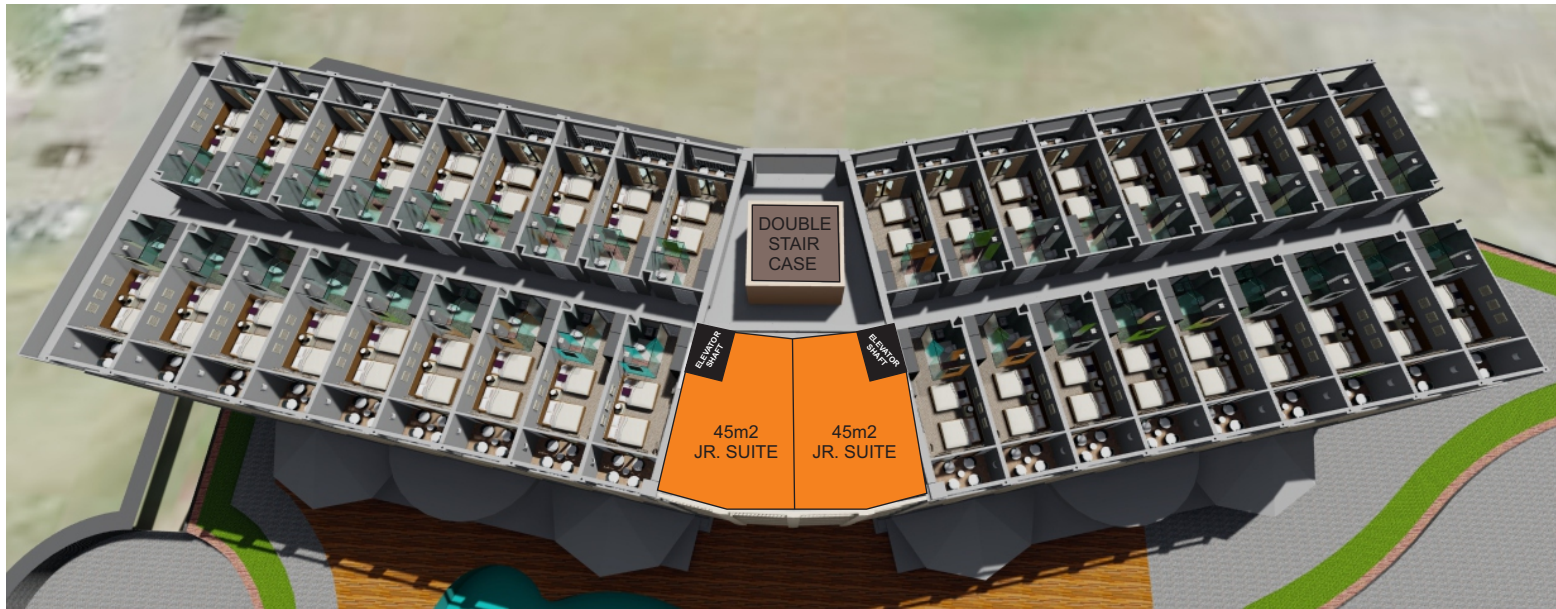


Port de Plaisance Resort Marina Modular Hotel CDBD SXM
 email- jesusperezborges@gmail.com site- thematicdesigner.com 1-829-343-3614

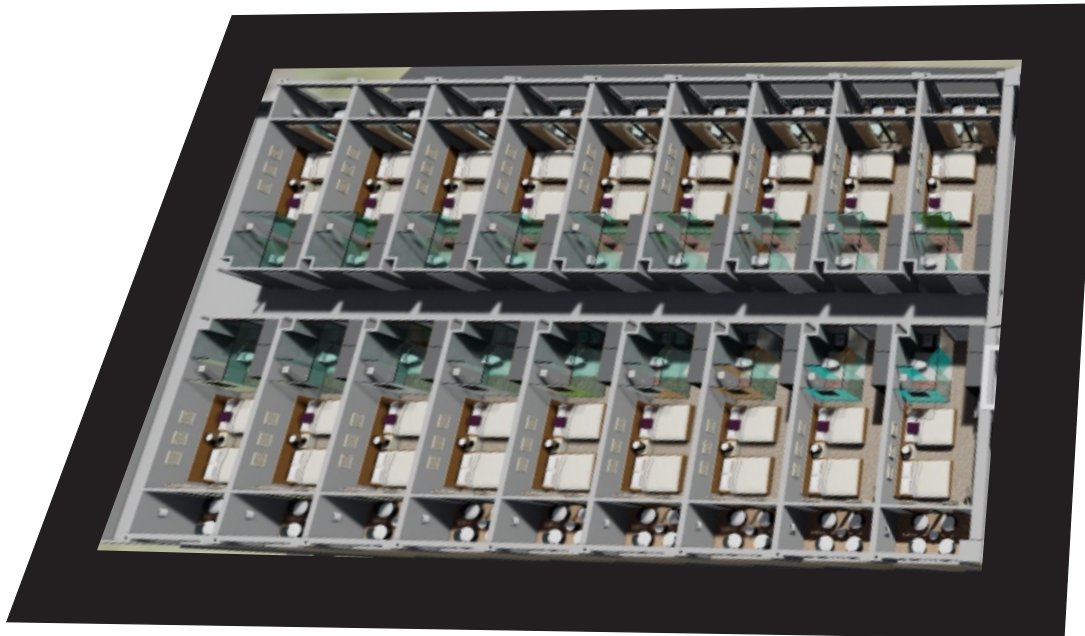


HOTEL ROOM SIZE AND DISTRIBUTION, 5 STAR RATING MINIMUM STANDARDS

03/02/20



DOUBLE WING HOTELDESIGN



ENLARGED HALF WING VIEW



Port de Plaisance Resort Marina Modular Hotel CDBD SXM
email- jesusperezborges@gmail.com site- thematicdesigner.com 1-829-343-3614

This drawing represents a design intent and concept only. This document and all associated documents are prepared for a specific site, and incorporate calculations and measurements available at the time of drafting, without the written permission of the designer. The contents of this document are not to be reproduced or copied in whole or part without the written permission of Jesus Perez Borges. Copyright © 2020.



PORT DE PLAISANCE RESORT MARINA MODULAR HOTEL CONCEPTUAL DESIGN IMAGES

03/02/20



JP BORGES
I D E A T E A M

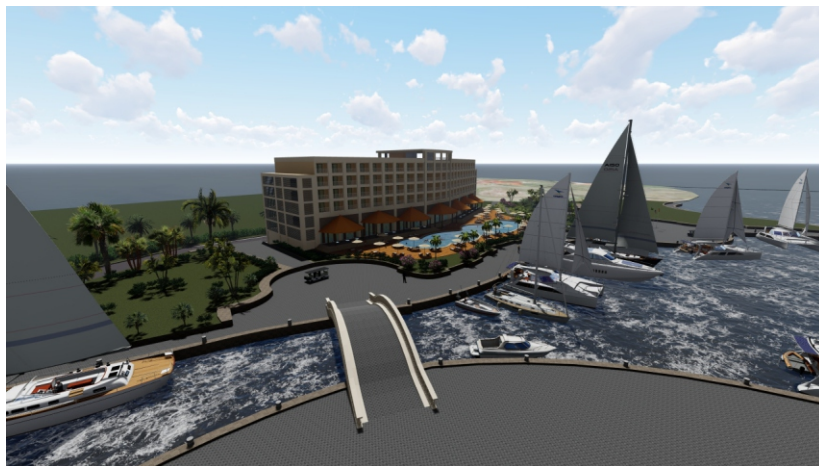
Port de Plaisance Resort Marina Modular Hotel CDBD SXM
email- jesusperezborges@gmail.com site- thematicdesigner.com 1-829-343-3614

This drawing represents a design intent and concept only. This document and all associated documents are prepared for a specific site, and incorporate calculations and measurements available at the time of drafting. without the written permission of the designer. The contents of this document are not to be reproduced or copied in whole or part without the written permission of Jesus Perez Borges. Copyright © 2020.

SMART
MODULAR SOLUTIONS
FOR FABRICATED CONSTRUCTION & RECONSTRUCTION

PORT DE PLAISANCE RESORT MARINA MODULAR HOTEL CONCEPTUAL DESIGN IMAGES 2

03/02/20



JP BORGES
I D E A T E A M

Port de Plaisance Resort Marina Modular Hotel CDBD SXM
email- jesusperzborges@gmail.com site- thematicdesigner.com 1-829-343-3614

This drawing represents a design intent and concept only. This document and all associated documents are prepared for a specific site, and incorporate calculations and measurements available at the time of drafting. without the written permission of the designer. The contents of this document are not to be reproduced or copied in whole or part without the written permission of Jesus Perez Borges. Copyright © 2020.

SMART
MODULAR SOLUTIONS
FOR FRANCHISE CONSTRUCTION & REDEVELOPMENT

PORT DE PLAISANCE RESORT MARINA MODULAR HOTEL CONCEPTUAL DESIGN IMAGES 3

03/02/20



JP BORGES
I D E A T E A M

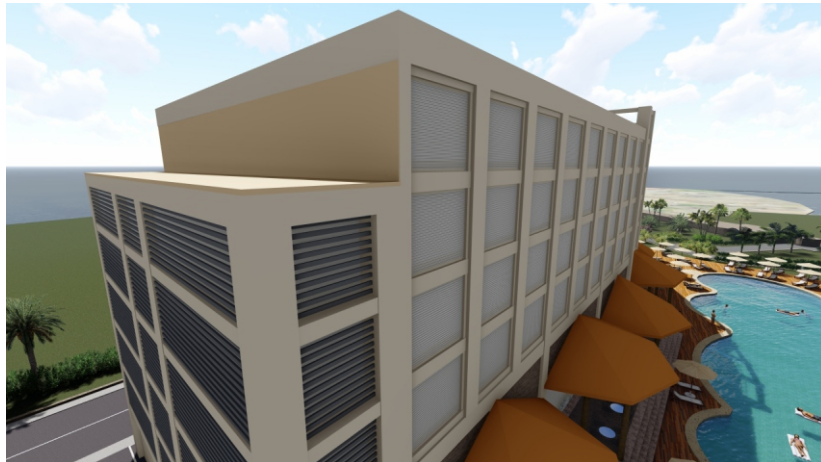
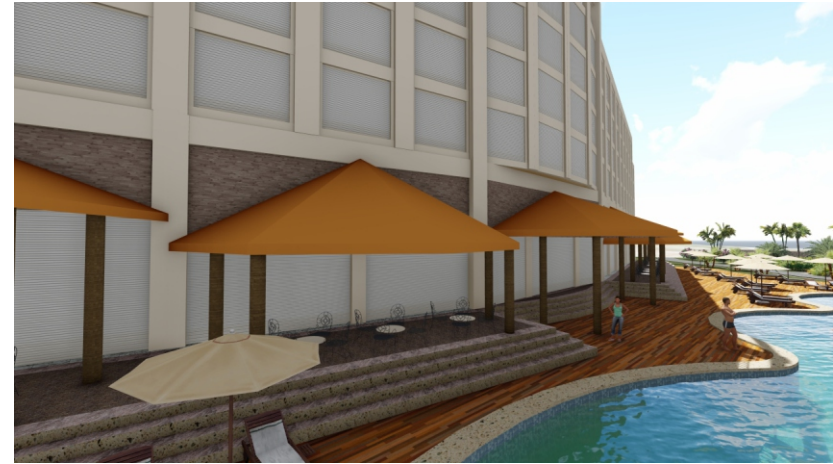
Port de Plaisance Resort Marina Modular Hotel CDBD SXM
email- jesusperzborges@gmail.com site- thematicdesigner.com 1-829-343-3614

This drawing represents a design intent and concept only. This document and all associated documents are prepared for a specific site, and incorporate calculations and measurements available at the time of drafting. without the written permission of the designer. The contents of this document are not to be reproduced or copied in whole or part without the written permission of Jesus Perez Borges. Copyright © 2020.

SMART
MODULAR SOLUTIONS
FOR FABRICATED CONSTRUCTION & RECONSTRUCTION

MODULAR HOTEL DESIGNED & ENGINEERED FOR THE USE OF CAT 5 RATED STORM SHUTTER SYSTEM

03/02/20



**HURRICANE READY DESIGN & ENGINEERING FOR COMPLETELY ENCLOSED STORM SHUTTER SYSTEM
CATEGORY 5 RATED, HI QUALITY ALUMINUM ELECTRIC ROLLING STORM SHUTTERS**

This drawing represents a design intent and concept only.
This document and all associated documents are prepared for a specific site, and incorporate calculations and measurements available at the time of drafting. Without the written permission of the designer, the contents of this document are not to be reproduced or copied in whole or part without the written permission of Jesus Perez Borges. Copyright © 2020.

JP BORGES
I D E A T E A M

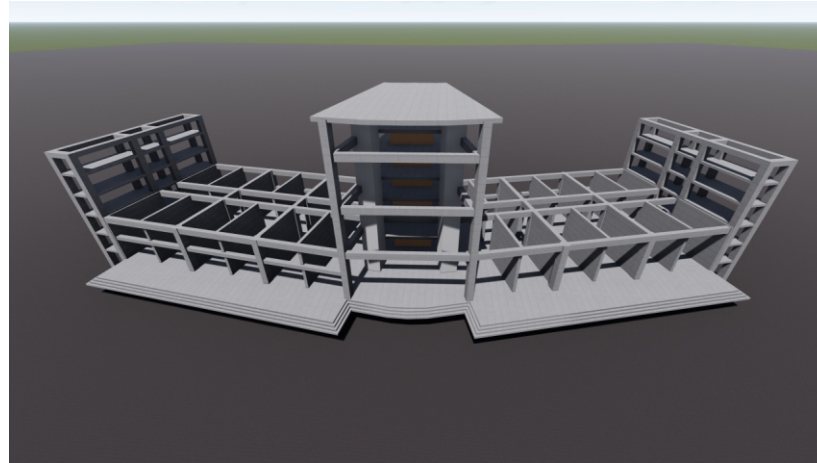
Port de Plaisance Resort Marina Modular Hotel CDBD SXM
email- jesusperezborges@gmail.com site- thematicdesigner.com 1-829-343-3614

SMART
MODULAR SOLUTIONS
FOR HURRICANE RESISTANT DESIGN

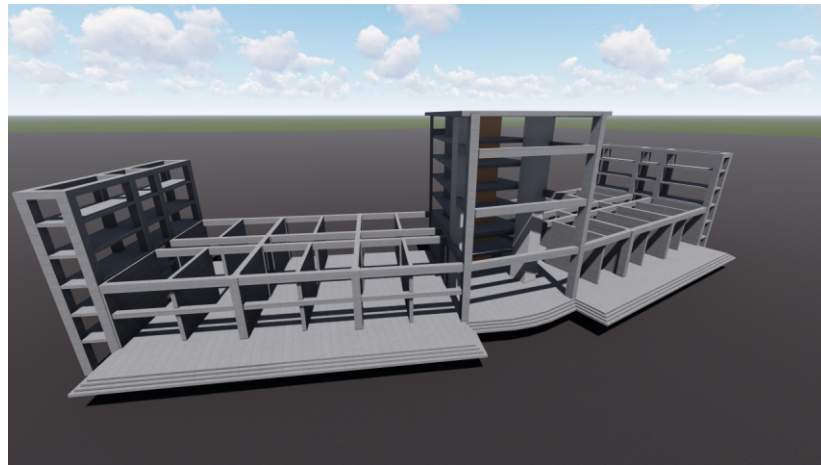
MODULAR HOTEL STEEL RE-ENFORCED CONCRETE FOUNDATION / MODULE BASE

03/02/20

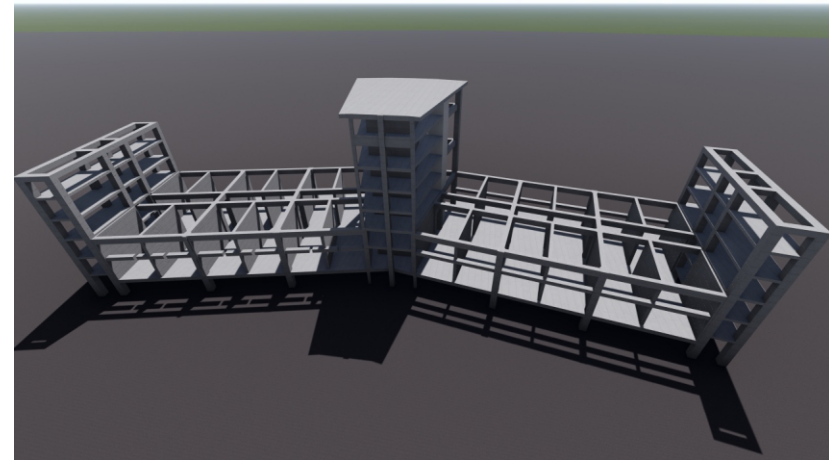
CONCRETE ELEVATOR SHAFT, STAIR CASE, AND SERVICE EQUIPMENT TOWERS SERVE AS CRADLE TYPE MODULE SUPPORT FOR BUILDING RIGIDNESS



CONCRETE STRUCTURE FOR GROUND LEVEL PARKING ENCLOSURE, FIRST LEVEL COMMON AREAS TO INCLUDE HOTEL RECEPTION



MARIANA SIDE OF CONCRETE FOUNDATION BASE



MOUNTAIN / MARIANA SIDE OF CONCRETE FOUNDATION BASE

PARALLEL OFF-SITE FACTORY FABRICATION OF MODULAR HOTELS ROOMS WITH HOTEL FOUNDATION / MODULE BASE ON-SITE CONSTRUCTION FACILITATES HOTEL DELIVERY TIME TO BE SHORTEN BY APPROXIMATELY 50%

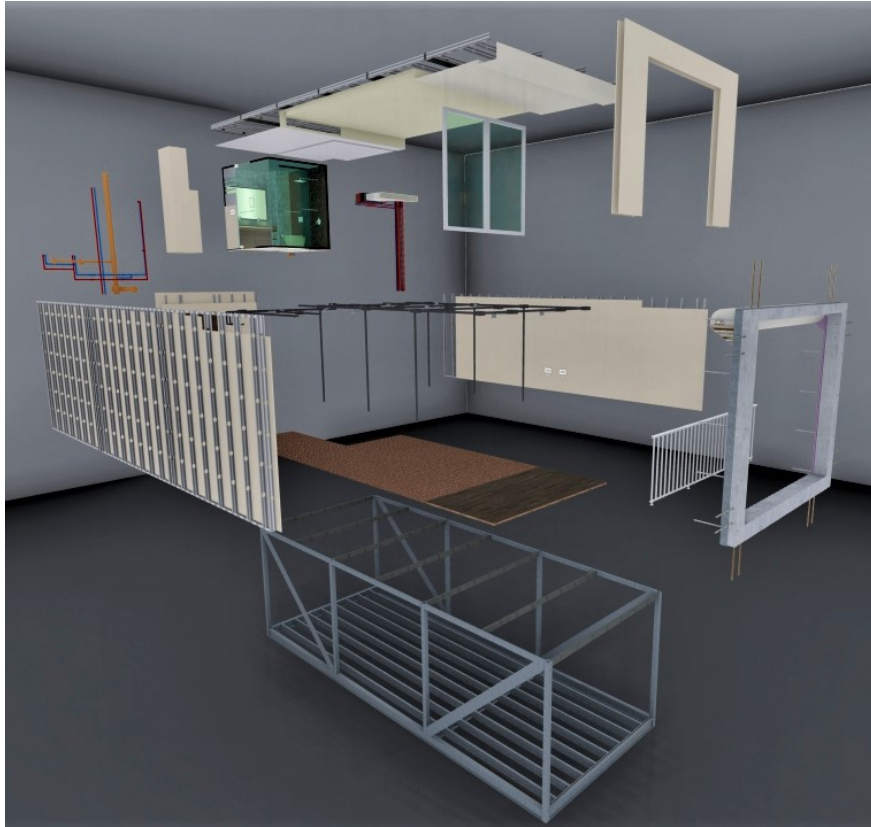
This drawing represents a design intent and concept only. This document and all associated documents are prepared for a specific site, and incorporate calculations and measurements available at the time of drafting. without the written permission of the designer. The contents of this document are not to be reproduced or copied in whole or part without the written permission of Jesus Perez Borges. Copyright © 2020.

Port de Plaisance Resort Marina Modular Hotel CDBD SXM
email- jesusperzborges@gmail.com site- thematicdesigner.com 1-829-343-3614

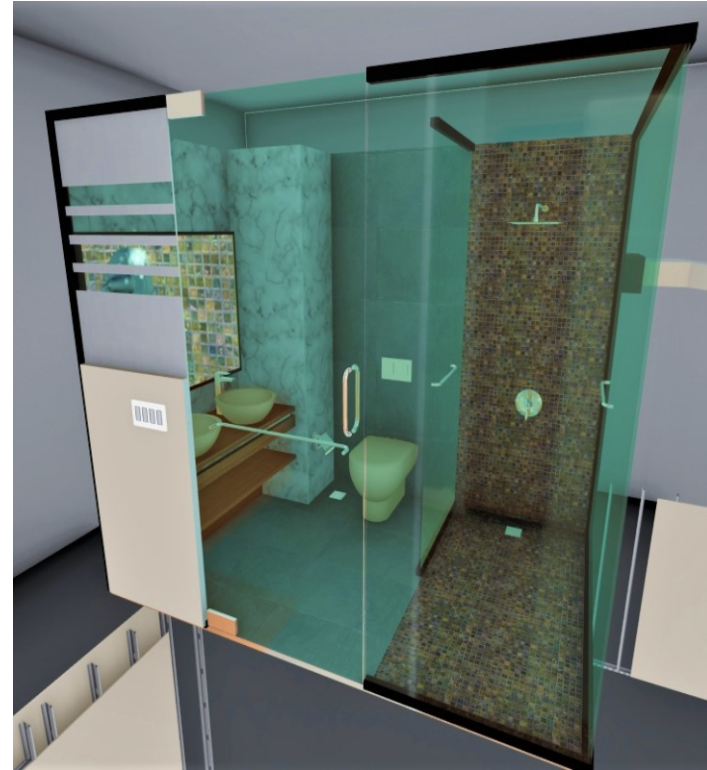


MODULAR ROOM BATHROOM COMPLETE ASSEMBLY

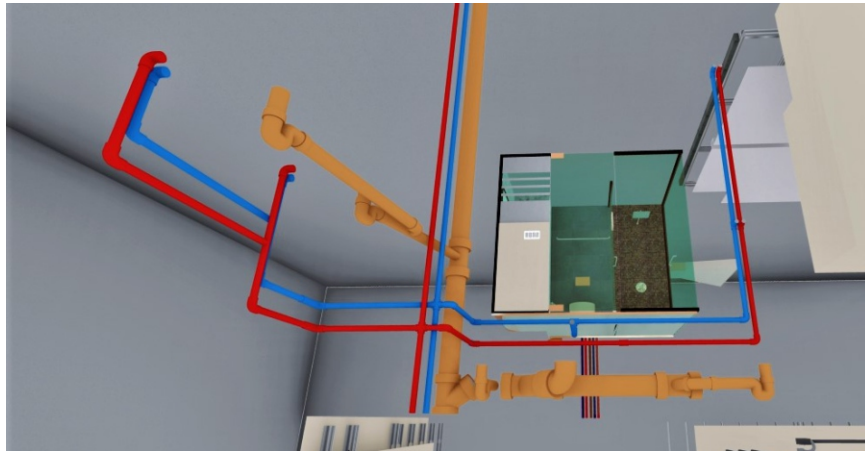
03/02/20



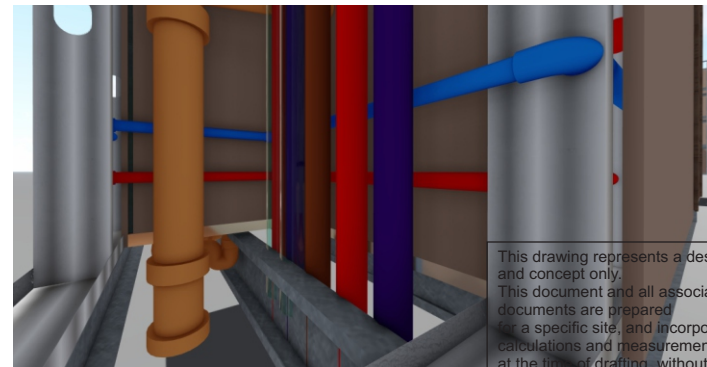
MODULAR ROOM ASSEMBLY BRAKEDOWN



BATHROOM ASSEMBLY WITH 12mm TEMPERED GLASS WALLS AND DOORS & HI QUALITY PORCELATO TILES, HI-END BATHROOM EQUIPMENT INCLUDED



BATHROOM PLUMBING LINES ASSEMBLY



MODULE INTERFLOOR PLUMBING, ELECTRICAL & AC CONNECTIONS

This drawing represents a design intent and concept only. This document and all associated documents are prepared for a specific site, and incorporate calculations and measurements available at the time of drafting, without the written permission of the designer. The contents of this document are not to be reproduced or copied in whole or part without the written permission of Jesus Perez Borges. Copyright © 2020.

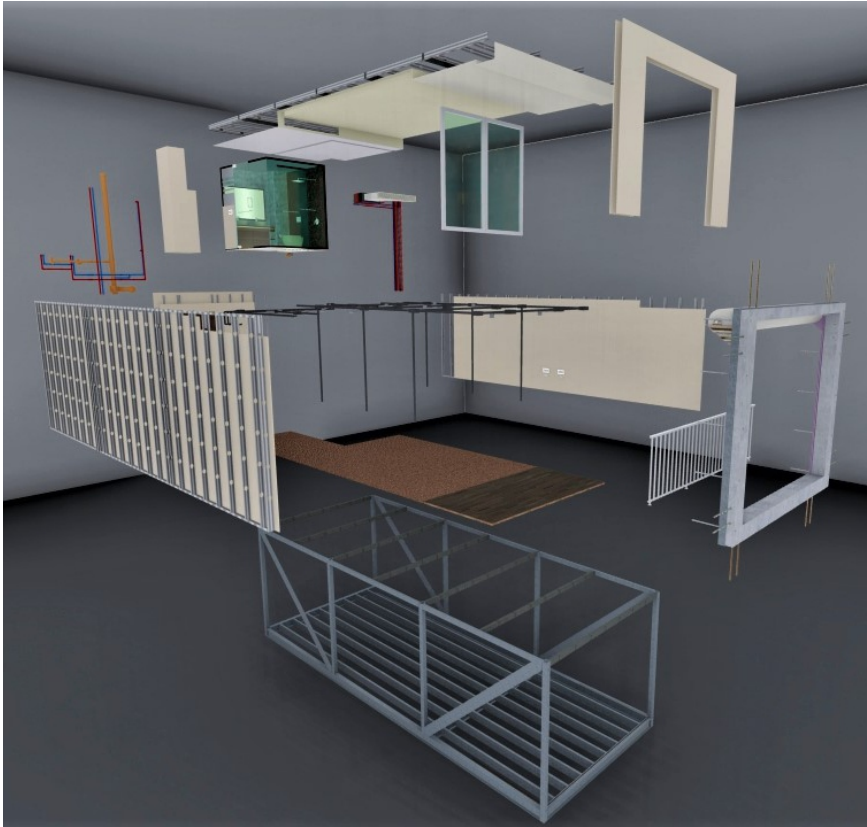
JP BORGES
I D E A T E A M

Port de Plaisance Resort Marina Modular Hotel CDBD SXM
email- jesusperzborges@gmail.com site- thematicdesigner.com 1-829-343-3614

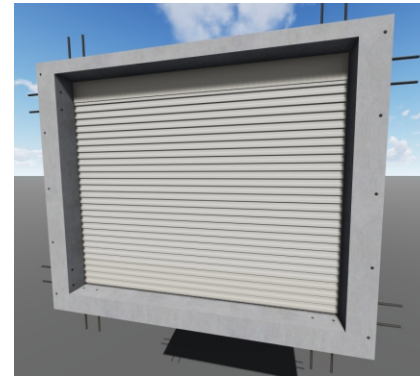
SMART
MODULAR SOLUTIONS
FOR FABRICATED CONSTRUCTION BY DESIGN

MODULAR STRUCTURE STEEL STRUCTURE ASSEMBLY & SHEETROCK FRAMING

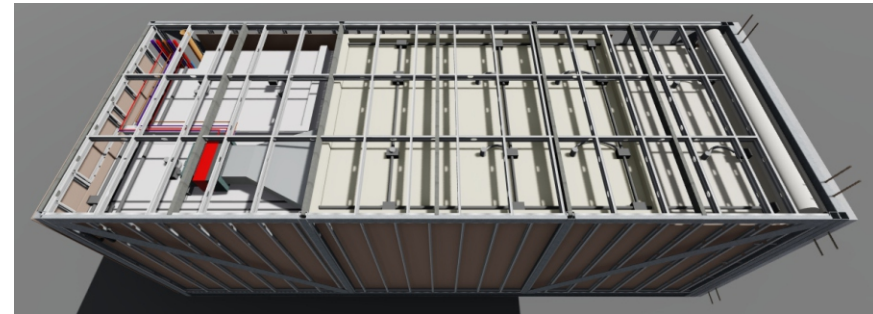
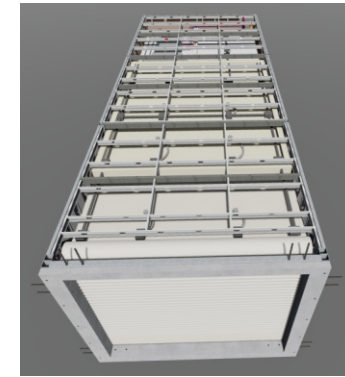
03/02/20



MODULAR ROOM ASSEMBLY BRAKEDOWN



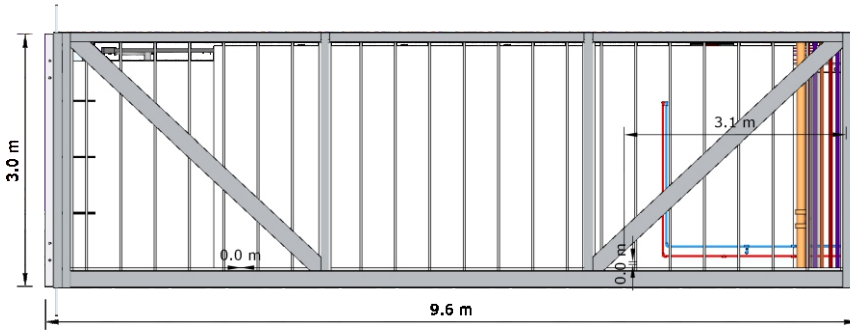
PRECAST CONCRETE FACADE WITH ELECTRIC ROLLING STORM SHUTTER



GALVANIZED METAL SHEETROCK CEILING STUDS WITH ACOUSTICAL INSULATION



GALVANIZED METAL SHEETROCK WALL STUDS WITH ACOUSTICAL INSULATION



GALVANIZED STRUCTURAL HOLLOW STEEL SQUARE TUBE & I-BEAM MODULAR STRUCTURE

This drawing represents a design intent and concept only. This document and all associated documents are prepared for a specific site, and incorporate calculations and measurements available at the time of drafting, without the written permission of the designer. The contents of this document are not to be reproduced or copied in whole or part without the written permission of Jesus Perez Borges. Copyright © 2020.

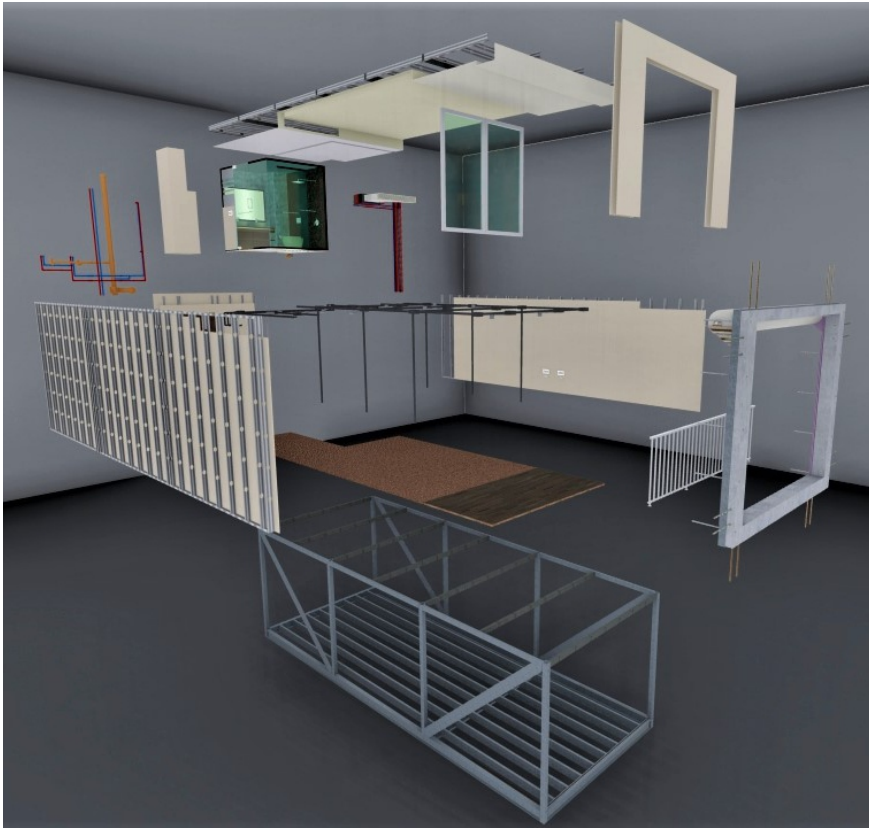


Port de Plaisance Resort Marina Modular Hotel CDBD SXM
 email- jesusperzborges@gmail.com site- thematicdesigner.com 1-829-343-3614

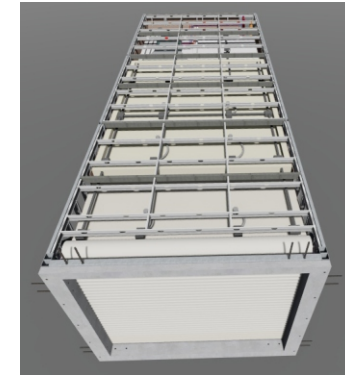
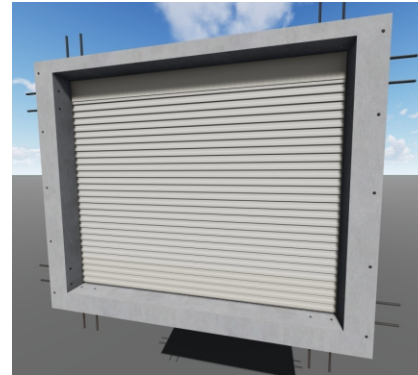


STEEL RE-ENFORCED PRECAST CONCRETE FACADE & ROLLING STORM SHUTTER

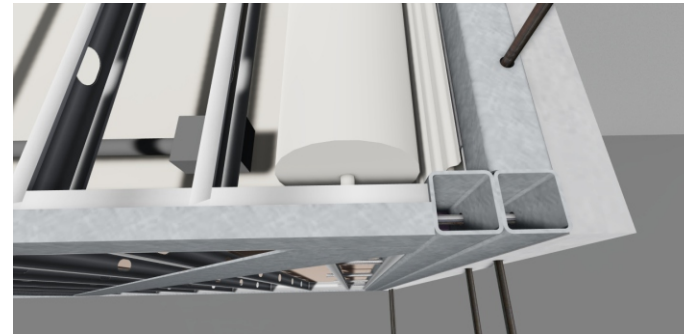
03/02/20



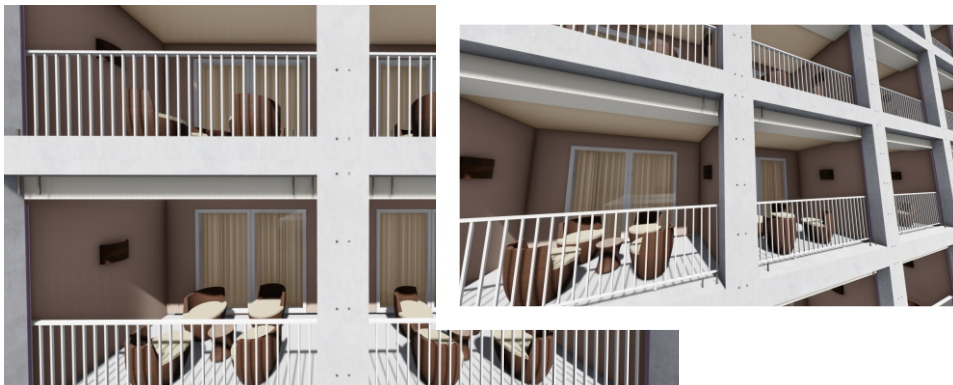
MODULAR ROOM ASSEMBLY BRAKEDOWN



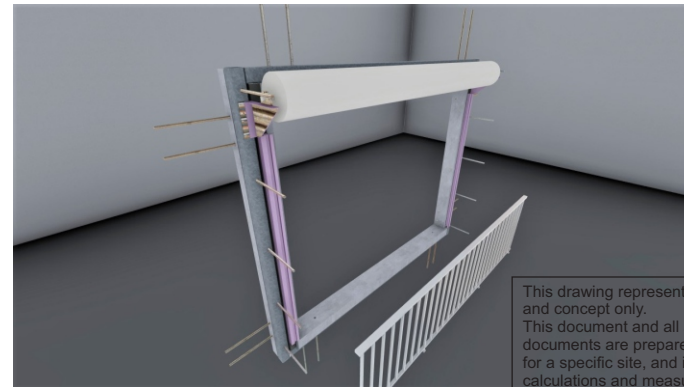
PRECAST CONCRETE FACADE WITH ELECTRIC ROLLING STORM SHUTTER



ISO VIEW OF CONCRETE FACADE, SHS STRUCTURE AND ROLLING STORM GATE ASSEMBLY



PRECAST CONCRETE FACADE COMPOSITION OF ASSEMBLED MODULES & ALUMINUM RAILINGS



BACK VIEW OF CONCRETE FACADE, ROLLING STORM SHUTTER & RAILING

This drawing represents a design intent and concept only. This document and all associated documents are prepared for a specific site, and incorporate calculations and measurements available at the time of drafting, without the written permission of the designer. The contents of this document are not to be reproduced or copied in whole or part without the written permission of Jesus Perez Borges. Copyright © 2020.

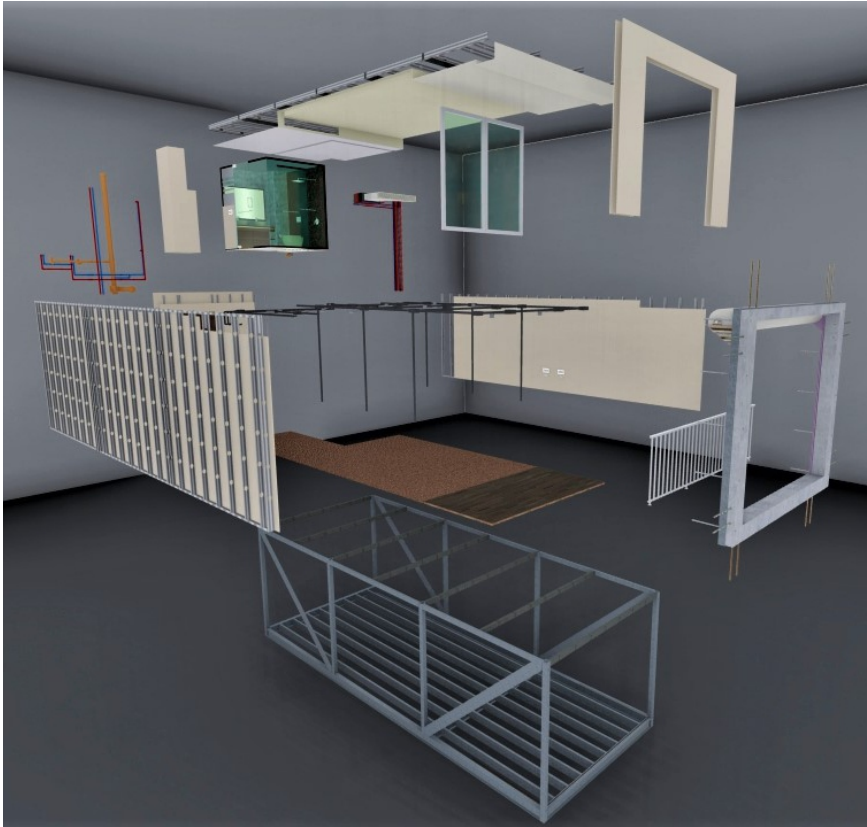


Port de Plaisance Resort Marina Modular Hotel CDBD SXM
 email- jesusperzborges@gmail.com site- thematicdesigner.com 1-829-343-3614

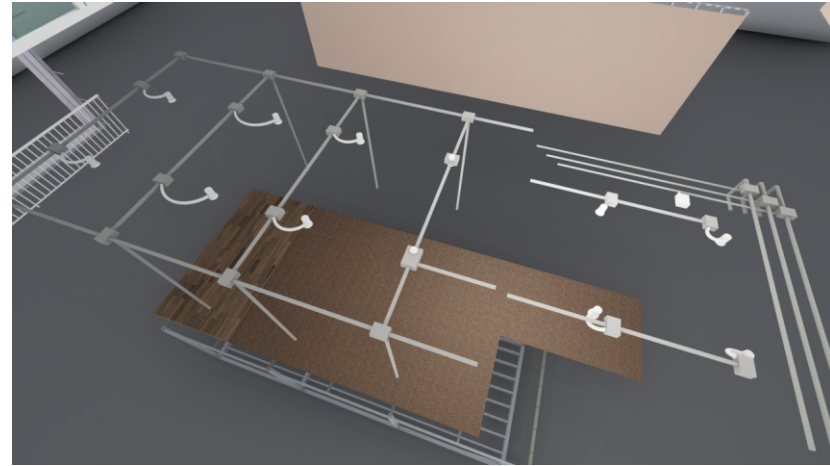


MODULAR ROOM INTERNAL ELECTRICAL SYSTEM AND VRF HVAC PRE-INSTALLATION

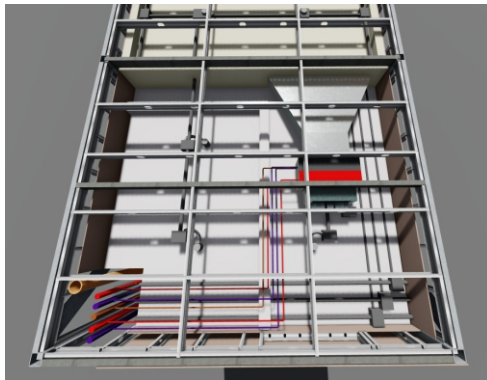
03/02/20



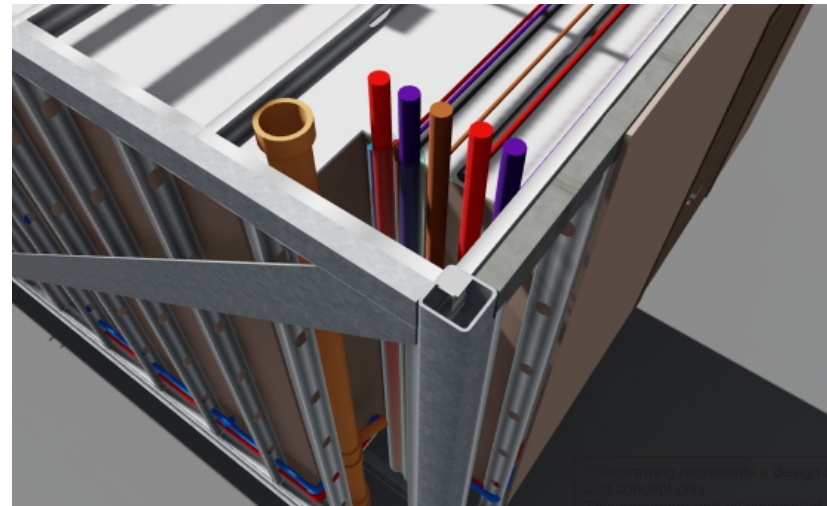
MODULAR ROOM ASSEMBLY BRAKEDOWN



COMPLETE IN-MODULE ELECTRICAL WIRINGSYSTEM TO INCLUDE ALL ASCESORIES AND BREAKER PANEL



ISO VIEW OF VRF HVAC OVER BATHROOM FANCOIL CONDENSER



VIEW OF MODULE TO MODULE INTER-FLOOR SHAFT ELECTRICAL AND VRF HVAC CONNECTION

This document and all associated documents are prepared for a specific site, and incorporate calculations and measurements available at the time of drafting. without the written permission of the designer. The contents of this document are not to be reproduced or copied in whole or part without the written permission of Jesus Perez Borges. Copyright © 2020.



Port de Plaisance Resort Marina Modular Hotel CDBD SXM
 email- jesusperezborges@gmail.com site- thematicdesigner.com 1-829-343-3614



MODULAR ROOM TO SCALE FURNITURE MEASUREMENTS, INTERIOR LAYOUT & BATHROOM VIEWS

03/02/20



3D BALCONY BALCONY



3D INTERIOR VIEW



3D INTERIOR VIEW



3D INTERIOR VIEW

This drawing represents a design intent and concept only. This document and all associated documents are prepared for a specific site, and incorporate calculations and measurements available at the time of drafting, without the written permission of the designer. The contents of this document are not to be reproduced or copied in whole or part without the written permission of Jesus Perez Borges. Copyright © 2020.

JP BORGES
I D E A T E A M

Port de Plaisance Resort Marina Modular Hotel CDBD SXM
email- jesusperezborges@gmail.com site- thematicdesigner.com 1-829-343-3614

SMART
MODULAR SOLUTIONS
FOR FABRICATED CONSTRUCTION BY DESIGN

MODULAR ROOM TO SCALE BATHROOM VIEWS

03/02/20



3D BATHROOM VIEW



3D BATHROOM VIEW

This drawing represents a design intent and concept only. This document and all associated documents are prepared for a specific site, and incorporate calculations and measurements available at the time of drafting, without the written permission of the designer. The contents of this document are not to be reproduced or copied in whole or part without the written permission of Jesus Perez Borges. Copyright © 2020.



Port de Plaisance Resort Marina Modular Hotel CDBD SXM
email- jesusperezborges@gmail.com site- thematicdesigner.com 1-829-343-3614

