

DESCANSO S E R I E S DELUXE CARPET

 CATALINA
PRODUCTS
INTERNATIONAL
714.716.1667 | contact@catalinaproducts.international

SENTINEL

SPECIFICATIONS

Product Construction	Tufted Texture Loop
Fiber	Nylon
Dye Method	Solution Dyed
Backing	Assured Hardback Tile
Yarn Weight Tufted	12 oz/yd sq
Machine Gauge	1/12"
Pile Heights	High: 0.140" - Low: 0.065"
Stitches Per Inches	8.5
Total Thickness	0.170"
Total Weight	58 oz/yd sq
Size	18"x36", 24"x24"

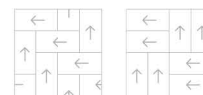
SIZES

Carpet Tile:
18"x36"
24"x24"

INSTALLATION

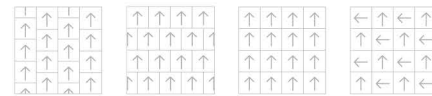
Carpet Tile:

18 in x 36 in

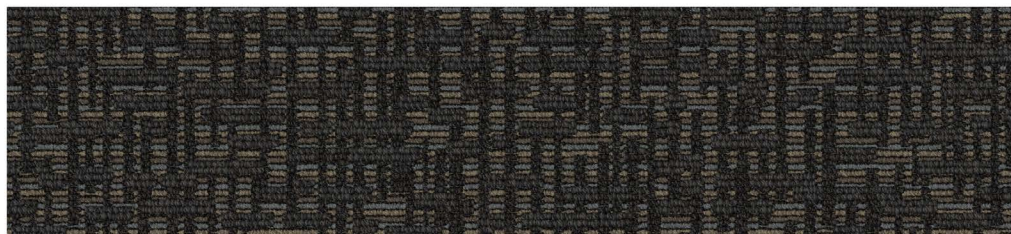


Herringbone Parquet

24 in x 24 in



Ashlar Brick Monolithic Quarter Turn



Pluton 400097

LOCALSTOCK
Tustin, California

TESTING

Radiant Panel	Passes Class 1 = 0.45 W/cm (ASTM-E648)
Smoke Density	450 dm Corrected (ASTM-E662), Flaming
Flammability	Passes Methenamine Pill Test (CPSC-FF1-70)
Static	3.5 kV (AATCC-134), Step



Carpet specifications and components are subject to normal manufacturing tolerances and may change without notice. Products warranted in accordance with the terms and conditions of CPI's standard printed warranty in effect at time product is sold. All other warranties, including without limitation any implied warranties of merchantability or fitness for a particular purpose, are hereby disclaimed. Made in USA.

Warning: unauthorized reproduction of this carpet design constitutes copyright infringement. ©2023 Catalina Products International LLC

GENERAL INFORMATION

For Pricing, Samples, Warranties, and Installation Guides, please contact us at contact@catalinaproducts.international or call 714-716-1677.



DESCANSO S E R I E S DELUXE CARPET

 CATALINA
PRODUCTS
INTERNATIONAL
714.716.1667 | contact@catalinaproducts.international

SENTINEL

SPECIFICATIONS

Product Construction	Tufted Texture Loop
Fiber	Nylon
Dye Method	Solution Dyed
Backing	Altai Plus Cushion Tile
Yarn Weight Tufted	12 oz/yd sq
Machine Gauge	1/12"
Pile Heights	High: 0.140" - Low: 0.065"
Stitches Per Inches	8.5
Total Thickness	0.325"
Total Weight	77 oz/yd sq
Size	18"x36", 24"x24"

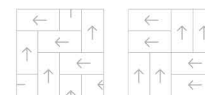
SIZES

Carpet Tile:
18"x36"
24"x24"

INSTALLATION

Carpet Tile:

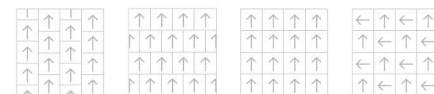
18 in x 36 in



Herringbone

Parquet

24 in x 24 in

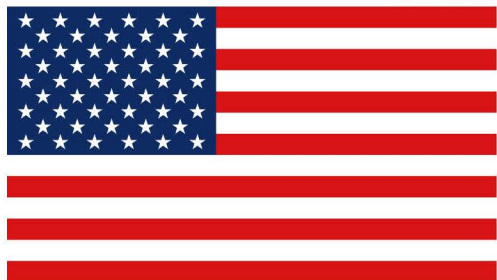


Ashlar

Brick

Monolithic

Quarter Turn



Proudly Made In The USA

TESTING

Radiant Panel	Passes Class 1 = 0.45 W/cm (ASTM-E648)
Smoke Density	450 dm Corrected (ASTM-E662), Flaming
Flammability	Passes Methenamine Pill Test (CPSC-FF1-70)
Static	3.5 kV (AATCC-134), Step



Carpet specifications and components are subject to normal manufacturing tolerances and may change without notice. Products warranted in accordance with the terms and conditions of CPI's standard printed warranty in effect at time product is sold. All other warranties, including without limitation any implied warranties of merchantability or fitness for a particular purpose, are hereby disclaimed. Made in USA.
Warning: unauthorized reproduction of this carpet design constitutes copyright infringement. ©2023 Catalina Products International LLC

GENERAL INFORMATION

For Pricing, Samples, Warranties, and Installation Guides, please contact us at contact@catalinaproducts.international or call 714-716-1677.



DESCANSO S E R I E S DELUXE CARPET

 CATALINA
PRODUCTS
INTERNATIONAL
714.716.1667 | contact@catalinaproducts.international

SENTINEL

SPECIFICATIONS

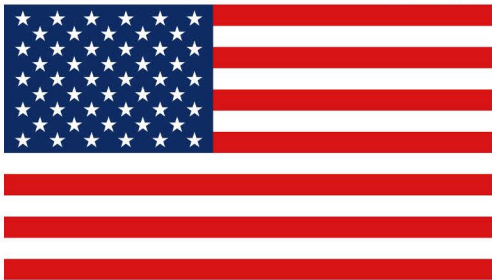
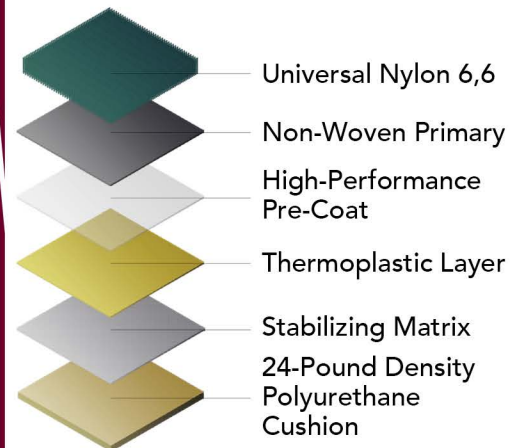
Product Construction	Tufted Texture Loop
Fiber	Nylon
Dye Method	Solution Dyed
Backing	HydroMesh
Yarn Weight Tufted	12 oz/yd sq
Machine Gauge	1/12"
Pile Heights	High: 0.140" - Low: 0.065"
Stitches Per Inches	8.5
Total Thickness	0.280"
Total Weight	87 oz/yd sq
Size	6' Roll

SIZES

6' Carpet Rolls

Backing Overview

HydroMesh™ 6ft Cushion



Proudly Made In The USA

TESTING

Radiant Panel	Passes Class 1 = 0.45 W/cm (ASTM-E648)
Smoke Density	450 dm Corrected (ASTM-E662), Flaming
Flammability	Passes Methenamine Pill Test (CPSC-FF1-70)
Static	3.5 kV (AATCC-134), Step



Carpet specifications and components are subject to normal manufacturing tolerances and may change without notice. Products warranted in accordance with the terms and conditions of CPI's standard printed warranty in effect at time product is sold. All other warranties, including without limitation any implied warranties of merchantability or fitness for a particular purpose, are hereby disclaimed. Made in USA.
Warning: unauthorized reproduction of this carpet design constitutes copyright infringement. ©2023 Catalina Products International LLC

GENERAL INFORMATION

For Pricing, Samples, Warranties, and Installation Guides, please contact us at contact@catalinaproducts.international or call 714-716-1677.

