

RESILIENT CARPET SERIES



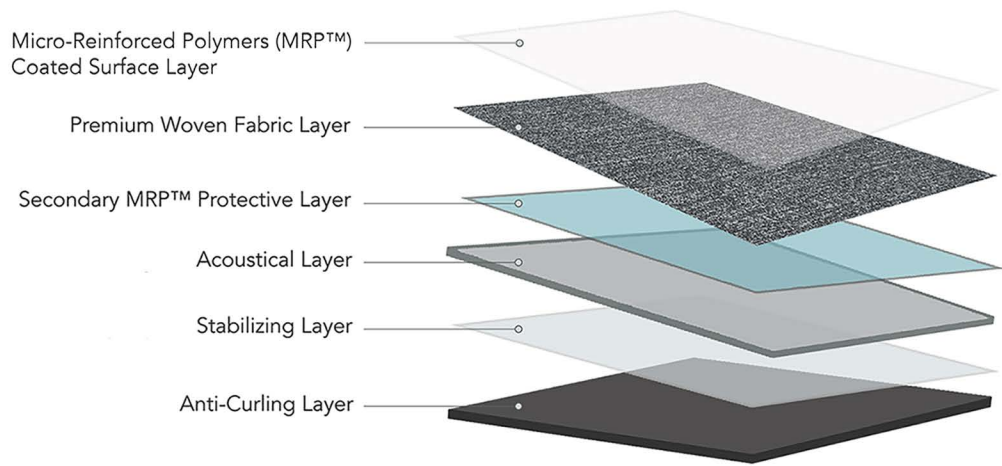
HRC

HYBRID RESILIENT CARPET



Hybrid Woven Resilient Flooring

The visual of soft surface flooring with the maintenance of resilient flooring. The woven textile surface is sealed from the top to not allow dirt or debris to impregnate the surface while being hyper resilient to surface abrasion and damage. The materials are maintained with a simple neutral cleaner; just like any other resilient, no wax floor and install with a standard pressure sensitive adhesive. What's on your floor?



Most Hygienic
Patented dual protection coating system meets environmental standards for anti-bacterial and anti-microbial performance
Safe and Clean
Easy Cleaning and Maintenance

Most Stable + Uniquely Layered Structure
The most reliable structure for outstanding dimensional stability. Consistent product thickness allows for mixing and matching HRC™ patterns

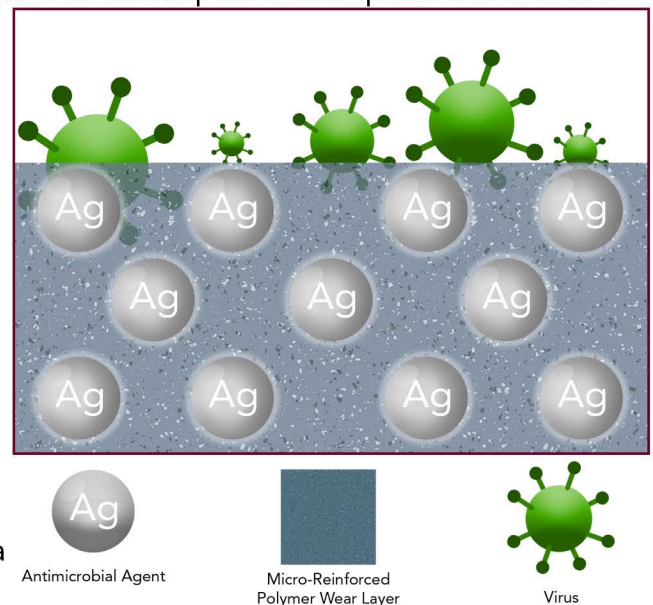
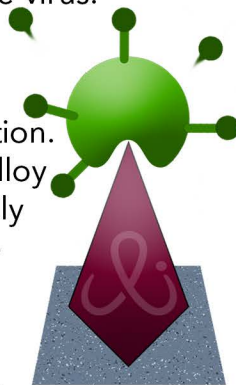
Tough + Waterproof
Superior wear resistance and waterproof function for commercial applications

Fray-Proof
Clean-cut finishing to prevent fraying even when tiles are cut into unique shapes during installation

Anti-viral Wear Layer

The anti-viral surface has two different approaches to managing viruses that touch the surface of the flooring. The first line of defense is in microspike that impales the thin fat layer which contains the virus.

The second layer of defense deals with metal alloys and oxidation. The ions in the metal alloy speed up and essentially cause the virus DNA to duplicate, weaken and decay through a oxidation process. The process is inherent to the surface of the floor covering. There is no diffusion or transfer of the antiviral components. An excellent alternative to fogging and using ionizers on a daily basis.



Connect

catalinaproducts.international
info@catalinaproducts.international
714.716.1667

HRC

HYBRID RESILIENT CARPET

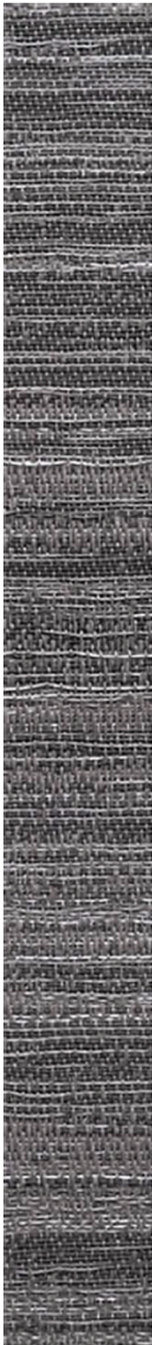


CATALINA
PRODUCTS
INTERNATIONAL

714.716.1667 | contact @ catalinaproducts.international



PRODUCT : **Ombre**



String | 2401



Cable | 2402



Rope | 2403



Twine | 2404



Strand | 2405



Cord | 2406

The printed images may not be an accurate reproduction of the products' actual colorways. We strive to offer an authentic representation, but images may vary according to press run and digital displays. These images are intended as a guide only. If you would like a sample of this product, please call us at 800.423.4709.

HRC

HYBRID RESILIENT CARPET



CATALINA
PRODUCTS
INTERNATIONAL

714.716.1667 | contact @ catalinaproducts.international



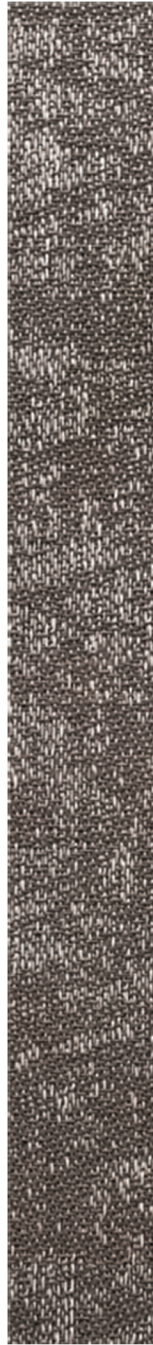
PRODUCT : **Herringbone**



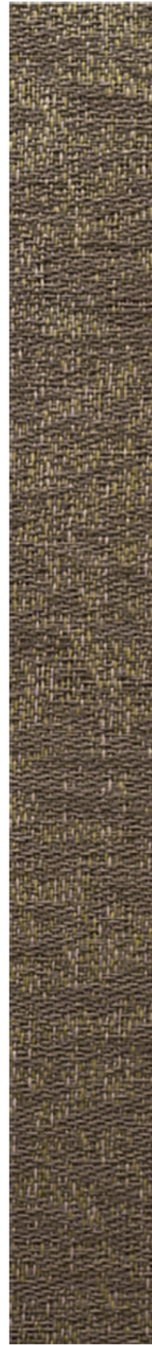
Lace | 2501



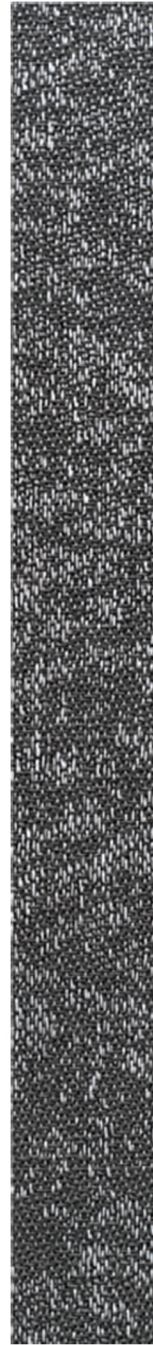
Ravel | 2502



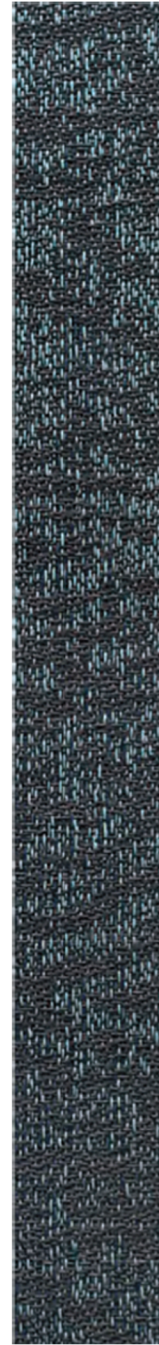
Bind | 2503



Blend | 2504



Link | 2505



Twist | 2506

The printed images may not be an accurate reproduction of the products' actual colorways. We strive to offer an authentic representation, but images may vary according to press run and digital displays. These images are intended as a guide only. If you would like a sample of this product, please call us at 800.423.4709.

HRC

HYBRID RESILIENT CARPET



CATALINA
PRODUCTS
INTERNATIONAL

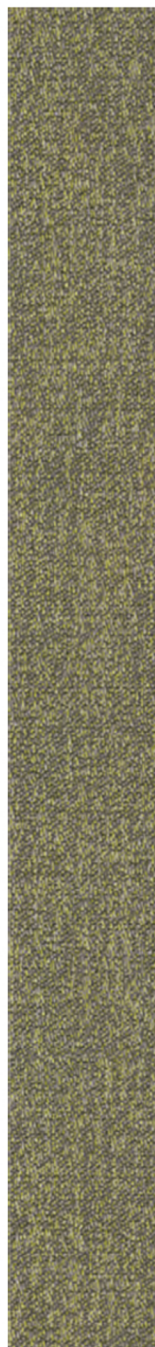
714.716.1667 | contact @ catalinaproducts.international



PRODUCT : **Melange**



Mesh | 2601



Thatch | 2602



Fiber | 2603



Braid | 2604



Gauge | 2605



Spun | 2606

The printed images may not be an accurate reproduction of the products' actual colorways. We strive to offer an authentic representation, but images may vary according to press run and digital displays. These images are intended as a guide only. If you would like a sample of this product, please call us at 800.423.4709.

HRC

HYBRID RESILIENT CARPET

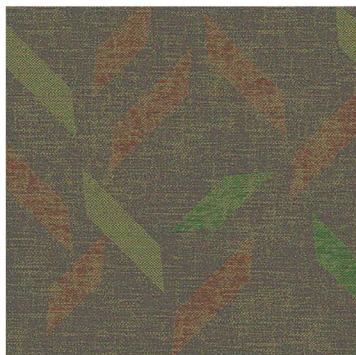


CATALINA
PRODUCTS
INTERNATIONAL

714.716.1667 | contact @ catalinaproducts.international



PRODUCT : **Prizm**



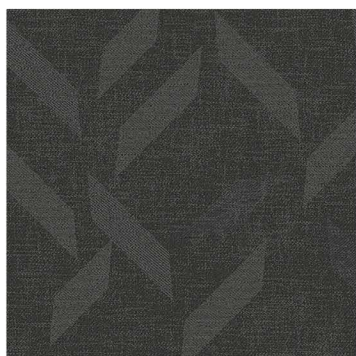
Reflect | 601



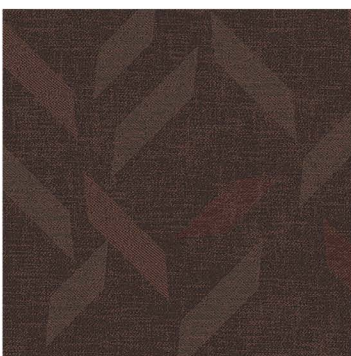
Diffuse | 605



Photon | 607



Opaque | 608



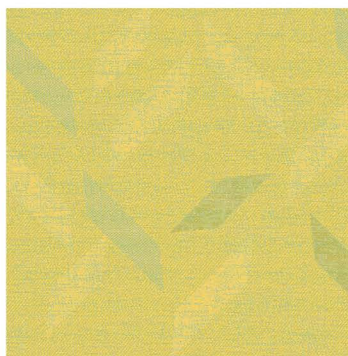
Refract | 609



Radiant | 613



Spectrum | 627



Ray | 628

The printed images may not be an accurate reproduction of the products' actual colorways. We strive to offer an authentic representation, but images may vary according to press run and digital displays. These images are intended as a guide only. If you would like a sample of this product, please call us at 714.716.1667 or contact samples@catalinaproducts.international.