

DESCANSO

S E R I E S

DELUXE CARPET

 CATALINA
PRODUCTS
INTERNATIONAL
714.716.1667 | contact@catalinaproducts.international

BINNACLE

SPECIFICATIONS

| | |
|----------------------|----------------------------|
| Product Construction | Tufted Texture Loop |
| Fiber | Nylon |
| Dye Method | Solution Dyed |
| Backing | Assured Hardback Tile |
| Yarn Weight Tufted | 12 oz/yd sq |
| Machine Gauge | 1/12" |
| Pile Heights | High: 0.140" - Low: 0.065" |
| Stitches Per Inches | 9.2 |
| Total Thickness | 0.170" |
| Total Weight | 58 oz/yd sq |
| Size | 18"x36", 24"x24" |

SIZES

Carpet Tile:
18"x36"
24"x24"

INSTALLATION

Carpet Tile:

18 in x 36 in



Brick



Herringbone



Monolithic

24 in x 24 in



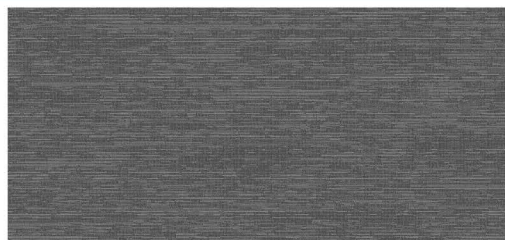
Brick



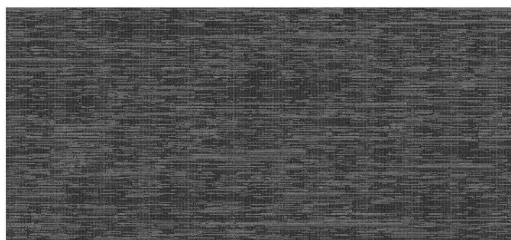
Monolithic



Quarter Turn



Serpentine 400098



Talc 400100

LOCALSTOCK
Tustin, California

TESTING

| | |
|---------------|--|
| Radiant Panel | Passes Class 1 = 0.45 W/cm (ASTM-E648) |
| Smoke Density | 450 dm Corrected (ASTM-E662), Flaming |
| Flammability | Passes Methenamine Pill Test (CPSC-FF1-70) |
| Static | 3.5 kV (AATCC-134), Step |



SCAN ME

Carpet specifications and components are subject to normal manufacturing tolerances and may change without notice. Products warranted in accordance with the terms and conditions of CPI's standard printed warranty in effect at time product is sold. All other warranties, including without limitation any implied warranties of merchantability or fitness for a particular purpose, are hereby disclaimed. Made in USA.

Warning: unauthorized reproduction of this carpet design constitutes copyright infringement. ©2023 Catalina Products International LLC

GENERAL INFORMATION

For Pricing, Samples, Warranties, and Installation Guides, please contact us at contact@catalinaproducts.international or call 714-716-1677.



DESCANSO S E R I E S DELUXE CARPET

 CATALINA
PRODUCTS
INTERNATIONAL
714.716.1667 | contact@catalinaproducts.international

BINNACLE

SPECIFICATIONS

| | |
|----------------------|----------------------------|
| Product Construction | Tufted Texture Loop |
| Fiber | Nylon |
| Dye Method | Solution Dyed |
| Backing | Altai Plus Cushion Tile |
| Yarn Weight Tufted | 12 oz/yd sq |
| Machine Gauge | 1/12" |
| Pile Heights | High: 0.140" - Low: 0.065" |
| Stitches Per Inches | 9.2 |
| Total Thickness | 0.325" |
| Total Weight | 77 oz/yd sq |
| Size | 18"x36", 24"x24" |

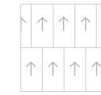
SIZES

Carpet Tile:
18"x36"
24"x24"

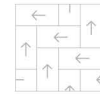
INSTALLATION

Carpet Tile:

18 in x 36 in



Brick

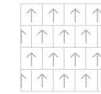


Herringbone

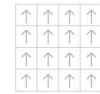


Monolithic

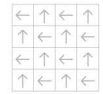
24 in x 24 in



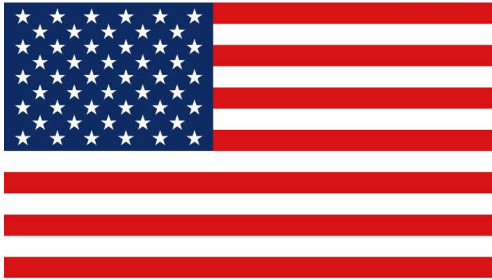
Brick



Monolithic



Quarter Turn



Proudly Made In The USA

TESTING

| | |
|---------------|--|
| Radiant Panel | Passes Class 1 = 0.45 W/cm (ASTM-E648) |
| Smoke Density | 450 dm Corrected (ASTM-E662), Flaming |
| Flammability | Passes Methenamine Pill Test (CPSC-FF1-70) |
| Static | 3.5 kV (AATCC-134), Step |



Carpet specifications and components are subject to normal manufacturing tolerances and may change without notice. Products warranted in accordance with the terms and conditions of CPI's standard printed warranty in effect at time product is sold. All other warranties, including without limitation any implied warranties of merchantability or fitness for a particular purpose, are hereby disclaimed. Made in USA.
Warning: unauthorized reproduction of this carpet design constitutes copyright infringement. ©2023 Catalina Products International LLC

GENERAL INFORMATION

For Pricing, Samples, Warranties, and Installation Guides, please contact us at contact@catalinaproducts.international or call 714-716-1677.



DESCANSO S E R I E S DELUXE CARPET

 CATALINA
PRODUCTS
INTERNATIONAL
714.716.1667 | contact@catalinaproducts.international

SENTINEL

SPECIFICATIONS

| | |
|----------------------|----------------------------|
| Product Construction | Tufted Texture Loop |
| Fiber | Nylon |
| Dye Method | Solution Dyed |
| Backing | Assured Hardback Tile |
| Yarn Weight Tufted | 12 oz/yd sq |
| Machine Gauge | 1/12" |
| Pile Heights | High: 0.140" - Low: 0.065" |
| Stitches Per Inches | 8.5 |
| Total Thickness | 0.170" |
| Total Weight | 58 oz/yd sq |
| Size | 18"x36", 24"x24" |

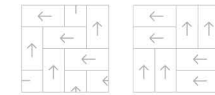
SIZES

Carpet Tile:
18"x36"
24"x24"

INSTALLATION

Carpet Tile:

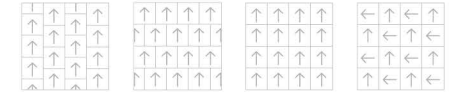
18 in x 36 in



Herringbone

Parquet

24 in x 24 in



Ashlar

Brick

Monolithic

Quarter Turn



Pluton 400097



TESTING

| | |
|---------------|--|
| Radiant Panel | Passes Class 1 = 0.45 W/cm (ASTM-E648) |
| Smoke Density | 450 dm Corrected (ASTM-E662), Flaming |
| Flammability | Passes Methenamine Pill Test (CPSC-FF1-70) |
| Static | 3.5 kV (AATCC-134), Step |



Carpet specifications and components are subject to normal manufacturing tolerances and may change without notice. Products warranted in accordance with the terms and conditions of CPI's standard printed warranty in effect at time product is sold. All other warranties, including without limitation any implied warranties of merchantability or fitness for a particular purpose, are hereby disclaimed. Made in USA.
Warning: unauthorized reproduction of this carpet design constitutes copyright infringement. ©2023 Catalina Products International LLC

GENERAL INFORMATION

For Pricing, Samples, Warranties, and Installation Guides, please contact us at contact@catalinaproducts.international or call 714-716-1677.



DESCANSO S E R I E S DELUXE CARPET

 CATALINA
PRODUCTS
INTERNATIONAL
714.716.1667 | contact@catalinaproducts.international

SENTINEL

SPECIFICATIONS

| | |
|----------------------|----------------------------|
| Product Construction | Tufted Texture Loop |
| Fiber | Nylon |
| Dye Method | Solution Dyed |
| Backing | Altai Plus Cushion Tile |
| Yarn Weight Tufted | 12 oz/yd sq |
| Machine Gauge | 1/12" |
| Pile Heights | High: 0.140" - Low: 0.065" |
| Stitches Per Inches | 8.5 |
| Total Thickness | 0.325" |
| Total Weight | 77 oz/yd sq |
| Size | 18"x36", 24"x24" |

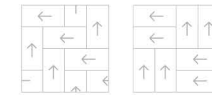
SIZES

Carpet Tile:
18"x36"
24"x24"

INSTALLATION

Carpet Tile:

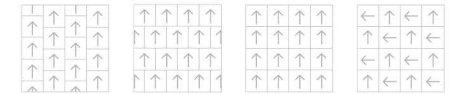
18 in x 36 in



Herringbone

Parquet

24 in x 24 in

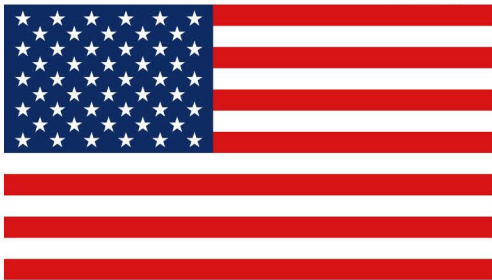


Ashlar

Brick

Monolithic

Quarter Turn



Proudly Made In The USA

TESTING

| | |
|---------------|--|
| Radiant Panel | Passes Class 1 = 0.45 W/cm (ASTM-E648) |
| Smoke Density | 450 dm Corrected (ASTM-E662), Flaming |
| Flammability | Passes Methenamine Pill Test (CPSC-FF1-70) |
| Static | 3.5 kV (AATCC-134), Step |



Carpet specifications and components are subject to normal manufacturing tolerances and may change without notice. Products warranted in accordance with the terms and conditions of CPI's standard printed warranty in effect at time product is sold. All other warranties, including without limitation any implied warranties of merchantability or fitness for a particular purpose, are hereby disclaimed. Made in USA.
Warning: unauthorized reproduction of this carpet design constitutes copyright infringement. ©2023 Catalina Products International LLC

GENERAL INFORMATION

For Pricing, Samples, Warranties, and Installation Guides, please contact us at contact@catalinaproducts.international or call 714-716-1677.



DESCANSO S E R I E S DELUXE CARPET

 CATALINA
PRODUCTS
INTERNATIONAL
714.716.1667 | contact@catalinaproducts.international

SENTINEL

SPECIFICATIONS

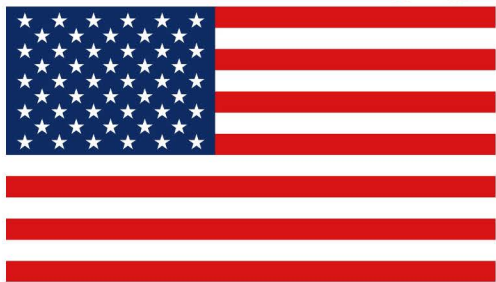
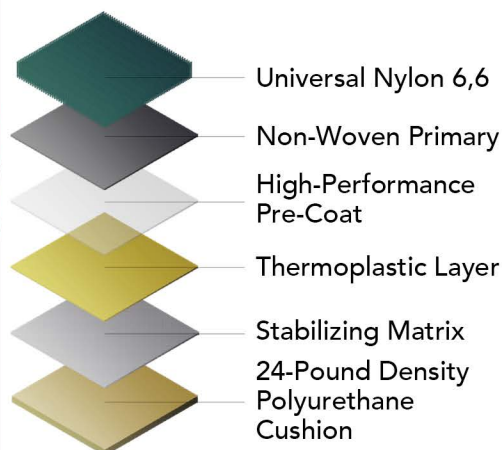
| | |
|----------------------|----------------------------|
| Product Construction | Tufted Texture Loop |
| Fiber | Nylon |
| Dye Method | Solution Dyed |
| Backing | HydroMesh |
| Yarn Weight Tufted | 12 oz/yd sq |
| Machine Gauge | 1/12" |
| Pile Heights | High: 0.140" - Low: 0.065" |
| Stitches Per Inches | 8.5 |
| Total Thickness | 0.280" |
| Total Weight | 87 oz/yd sq |
| Size | 6' Roll |

SIZES

6' Carpet Rolls

Backing Overview

HydroMesh™ 6ft Cushion



Proudly Made In The USA

TESTING

| | |
|---------------|--|
| Radiant Panel | Passes Class 1 = 0.45 W/cm (ASTM-E648) |
| Smoke Density | 450 dm Corrected (ASTM-E662), Flaming |
| Flammability | Passes Methenamine Pill Test (CPSC-FF1-70) |
| Static | 3.5 kV (AATCC-134), Step |



Carpet specifications and components are subject to normal manufacturing tolerances and may change without notice. Products warranted in accordance with the terms and conditions of CPI's standard printed warranty in effect at time product is sold. All other warranties, including without limitation any implied warranties of merchantability or fitness for a particular purpose, are hereby disclaimed. Made in USA.
Warning: unauthorized reproduction of this carpet design constitutes copyright infringement. ©2023 Catalina Products International LLC

GENERAL INFORMATION

For Pricing, Samples, Warranties, and Installation Guides, please contact us at contact@catalinaproducts.international or call 714-716-1677.



DESCANSO S E R I E S DELUXE CARPET

 CATALINA
PRODUCTS
INTERNATIONAL
714.716.1667 | contact@catalinaproducts.international

SUGARLOAF

SPECIFICATIONS

| | |
|----------------------|----------------------------|
| Product Construction | Tufted Texture Loop |
| Fiber | Nylon |
| Dye Method | Solution Dyed |
| Backing | Assured Hardback Tile |
| Yarn Weight Tufted | 12 oz/yd sq |
| Machine Gauge | 1/12" |
| Pile Heights | High: 0.140" - Low: 0.065" |
| Stitches Per Inches | 8.5 |
| Total Thickness | 0.170" |
| Total Weight | 58 oz/yd sq |
| Size | 18"x36", 24"x24" |

SIZES

Carpet Tile:
18"x36"
24"x24"

INSTALLATION

Carpet Tile:

18 in x 36 in



Ashlar



Herringbone



Monolithic

24 in x 24 in



Brick



Monolithic



Quarter Turn



Random



Amp 400099

LOCALSTOCK
Tustin, California

TESTING

| | |
|---------------|--|
| Radiant Panel | Passes Class 1 = 0.45 W/cm (ASTM-E648) |
| Smoke Density | 450 dm Corrected (ASTM-E662), Flaming |
| Flammability | Passes Methenamine Pill Test (CPSC-FF1-70) |
| Static | 3.5 kV (AATCC-134), Step |



SCAN ME

Carpet specifications and components are subject to normal manufacturing tolerances and may change without notice. Products warranted in accordance with the terms and conditions of CPI's standard printed warranty in effect at time product is sold. All other warranties, including without limitation any implied warranties of merchantability or fitness for a particular purpose, are hereby disclaimed. Made in USA.

Warning: unauthorized reproduction of this carpet design constitutes copyright infringement. ©2023 Catalina Products International LLC

GENERAL INFORMATION

For Pricing, Samples, Warranties, and Installation Guides, please contact us at contact@catalinaproducts.international or call 714-716-1677.



DESCANSO S E R I E S DELUXE CARPET

 CATALINA
PRODUCTS
INTERNATIONAL
714.716.1667 | contact@catalinaproducts.international

SUGARLOAF

SPECIFICATIONS

| | |
|----------------------|----------------------------|
| Product Construction | Tufted Texture Loop |
| Fiber | Nylon |
| Dye Method | Solution Dyed |
| Backing | Altai Plus Cushion Tile |
| Yarn Weight Tufted | 12 oz/yd sq |
| Machine Gauge | 1/12" |
| Pile Heights | High: 0.140" - Low: 0.065" |
| Stitches Per Inches | 8.5 |
| Total Thickness | 0.325" |
| Total Weight | 77 oz/yd sq |
| Size | 18"x36", 24"x24" |

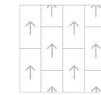
SIZES

Carpet Tile:
18"x36"
24"x24"

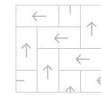
INSTALLATION

Carpet Tile:

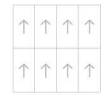
18 in x 36 in



Ashlar

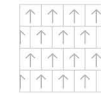


Herringbone

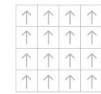


Monolithic

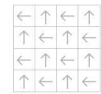
24 in x 24 in



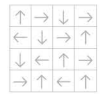
Brick



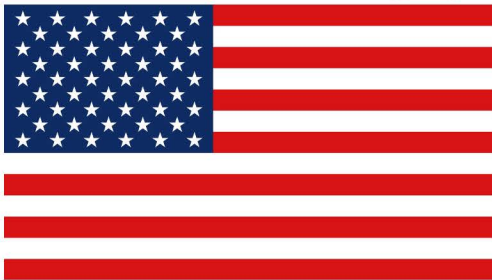
Monolithic



Quarter Turn



Random



Proudly Made In The USA

TESTING

| | |
|---------------|--|
| Radiant Panel | Passes Class 1 = 0.45 W/cm (ASTM-E648) |
| Smoke Density | 450 dm Corrected (ASTM-E662), Flaming |
| Flammability | Passes Methenamine Pill Test (CPSC-FF1-70) |
| Static | 3.5 kV (AATCC-134), Step |



Carpet specifications and components are subject to normal manufacturing tolerances and may change without notice. Products warranted in accordance with the terms and conditions of CPI's standard printed warranty in effect at time product is sold. All other warranties, including without limitation any implied warranties of merchantability or fitness for a particular purpose, are hereby disclaimed. Made in USA.
Warning: unauthorized reproduction of this carpet design constitutes copyright infringement. ©2023 Catalina Products International LLC

GENERAL INFORMATION

For Pricing, Samples, Warranties, and Installation Guides, please contact us at contact@catalinaproducts.international or call 714-716-1677.



DESCANSO S E R I E S DELUXE CARPET

 CATALINA
PRODUCTS
INTERNATIONAL
714.716.1667 | contact@catalinaproducts.international

SUGARLOAF

SPECIFICATIONS

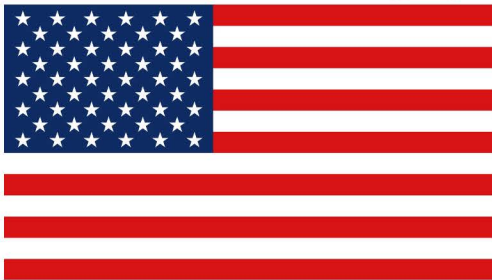
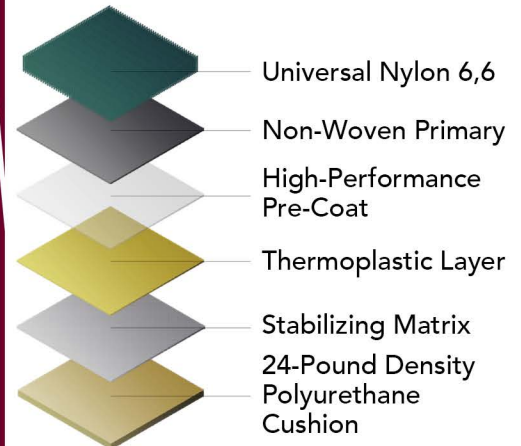
| | |
|----------------------|----------------------------|
| Product Construction | Tufted Texture Loop |
| Fiber | Nylon |
| Dye Method | Solution Dyed |
| Backing | HydroMesh |
| Yarn Weight Tufted | 12 oz/yd sq |
| Machine Gauge | 1/12" |
| Pile Heights | High: 0.140" - Low: 0.065" |
| Stitches Per Inches | 8.5 |
| Total Thickness | 0.280" |
| Total Weight | 87 oz/yd sq |
| Size | 6' Roll |

SIZES

6' Carpet Rolls

Backing Overview

HydroMesh™ 6ft Cushion



Proudly Made In The USA

TESTING

| | |
|---------------|--|
| Radiant Panel | Passes Class 1 = 0.45 W/cm (ASTM-E648) |
| Smoke Density | 450 dm Corrected (ASTM-E662), Flaming |
| Flammability | Passes Methenamine Pill Test (CPSC-FF1-70) |
| Static | 3.5 kV (AATCC-134), Step |



Carpet specifications and components are subject to normal manufacturing tolerances and may change without notice. Products warranted in accordance with the terms and conditions of CPI's standard printed warranty in effect at time product is sold. All other warranties, including without limitation any implied warranties of merchantability or fitness for a particular purpose, are hereby disclaimed. Made in USA.
Warning: unauthorized reproduction of this carpet design constitutes copyright infringement. ©2023 Catalina Products International LLC

GENERAL INFORMATION

For Pricing, Samples, Warranties, and Installation Guides, please contact us at contact@catalinaproducts.international or call 714-716-1677.



DESCANSO S E R I E S DELUXE CARPET

 CATALINA
PRODUCTS
INTERNATIONAL
714.716.1667 | contact@catalinaproducts.international

Summer

SPECIFICATIONS

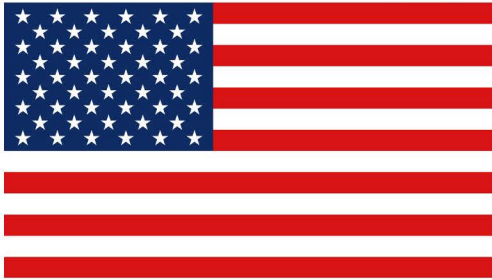
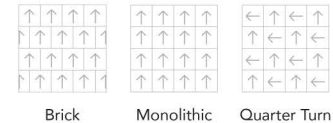
| | |
|----------------------|---|
| Product Construction | Tufted Texture Loop |
| Fiber | Nylon |
| Dye Method | Solution Dyed |
| Backing | Assured Hardback Tile |
| Yarn Weight Tufted | 24 oz/yd sq |
| Machine Gauge | 5/64" |
| Pile Heights | High: 0.198" - Medium: 0.140" - Low: 0.090" |
| Stitches Per Inches | 6.3 |
| Total Thickness | 0.260" |
| Total Weight | 69 oz/yd sq |
| Size | 24"x24" |

SIZES

Carpet Tile:
24"x24"

INSTALLATION

Carpet Tile:
24 in x 24 in



Proudly Made In The USA

TESTING

| | |
|---------------|--|
| Radiant Panel | Passes Class 1 = 0.45 W/cm (ASTM-E648) |
| Smoke Density | 450 dm Corrected (ASTM-E662), Flaming |
| Flammability | Passes Methenamine Pill Test (CPSC-FF1-70) |
| Static | 3.5 kV (AATCC-134), Step |



Carpet specifications and components are subject to normal manufacturing tolerances and may change without notice. Products warranted in accordance with the terms and conditions of CPI's standard printed warranty in effect at time product is sold. All other warranties, including without limitation any implied warranties of merchantability or fitness for a particular purpose, are hereby disclaimed. Made in USA.
Warning: unauthorized reproduction of this carpet design constitutes copyright infringement. ©2023 Catalina Products International LLC

GENERAL INFORMATION

For Pricing, Samples, Warranties, and Installation Guides, please contact us at contact@catalinaproducts.international or call 714-716-1677.



DESCANSO S E R I E S DELUXE CARPET

 CATALINA
PRODUCTS
INTERNATIONAL
714.716.1667 | contact@catalinaproducts.international

Summer

SPECIFICATIONS

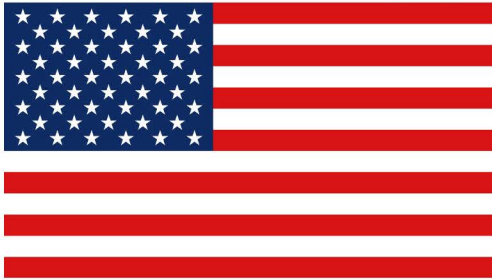
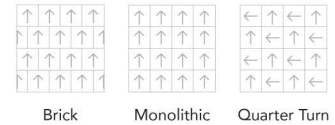
| | |
|----------------------|---|
| Product Construction | Tufted Texture Loop |
| Fiber | Nylon |
| Dye Method | Solution Dyed |
| Backing | Altai Plus Cushion Tile |
| Yarn Weight Tufted | 24 oz/yd sq |
| Machine Gauge | 5/64" |
| Pile Heights | High: 0.198" - Medium: 0.140" - Low: 0.090" |
| Stitches Per Inches | 6.3 |
| Total Thickness | 0.415" |
| Total Weight | 91 oz/yd sq |
| Size | 24"x24" |

SIZES

Carpet Tile:
24"x24"

INSTALLATION

Carpet Tile:
24 in x 24 in



Proudly Made In The USA

TESTING

| | |
|---------------|--|
| Radiant Panel | Passes Class 1 = 0.45 W/cm (ASTM-E648) |
| Smoke Density | 450 dm Corrected (ASTM-E662), Flaming |
| Flammability | Passes Methenamine Pill Test (CPSC-FF1-70) |
| Static | 3.5 kV (AATCC-134), Step |



Carpet specifications and components are subject to normal manufacturing tolerances and may change without notice. Products warranted in accordance with the terms and conditions of CPI's standard printed warranty in effect at time product is sold. All other warranties, including without limitation any implied warranties of merchantability or fitness for a particular purpose, are hereby disclaimed. Made in USA.
Warning: unauthorized reproduction of this carpet design constitutes copyright infringement. ©2023 Catalina Products International LLC

GENERAL INFORMATION

For Pricing, Samples, Warranties, and Installation Guides, please contact us at contact@catalinaproducts.international or call 714-716-1677.



DESCANSO
S E R I E S
DELUXE CARPET

 **CATALINA
PRODUCTS
INTERNATIONAL**
714.716.1667 | contact@catalinaproducts.international

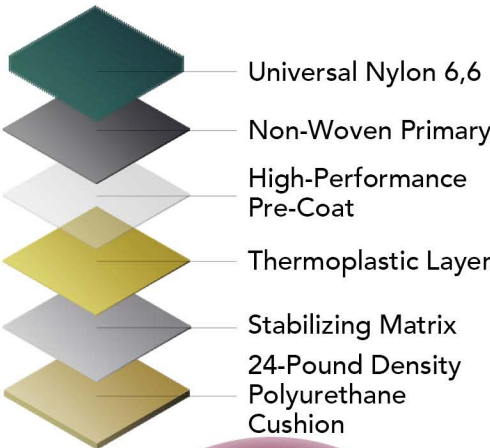
 Summer

SPECIFICATIONS

| | |
|----------------------|---|
| Product Construction | Tufted Texture Loop |
| Fiber | Nylon |
| Dye Method | Solution Dyed |
| Backing | HydroMesh |
| Yarn Weight Tufted | 24 oz/yd sq |
| Machine Gauge | 5/64" |
| Pile Heights | High: 0.198" - Medium: 0.140" - Low: 0.090" |
| Stitches Per Inches | 6.3 |
| Total Thickness | 0.370" |
| Total Weight | 98 oz/yd sq |
| Size | 6' Roll |

SIZES
6' Carpet Rolls

Backing Overview
HydroMesh™ 6ft Cushion



Casino 800019



TESTING

| | |
|---------------|--|
| Radiant Panel | Passes Class 1 = 0.45 W/cm (ASTM-E648) |
| Smoke Density | 450 dm Corrected (ASTM-E662), Flaming |
| Flammability | Passes Methenamine Pill Test (CPSC-FF1-70) |
| Static | 3.5 kV (AATCC-134), Step |



Carpet specifications and components are subject to normal manufacturing tolerances and may change without notice. Products warranted in accordance with the terms and conditions of CPI's standard printed warranty in effect at time product is sold. All other warranties, including without limitation any implied warranties of merchantability or fitness for a particular purpose, are hereby disclaimed. Made in USA.
Warning: unauthorized reproduction of this carpet design constitutes copyright infringement. ©2023 Catalina Products International LLC

GENERAL INFORMATION

For Pricing, Samples, Warranties, and Installation Guides, please contact us at contact@catalinaproducts.international or call 714-716-1677.

