



TEAM SRG LEADERSHIP INSTITUTE

SEC No.: CN00000000

P R O F I L E

www.thevoice.life





TEAM SRG LEADERSHIP INSTITUTE, INC.

TSRGLI (SRG Leadership Institute) is a dynamic and visionary institution offering Systematic Ecclesiastical Education within the framework of Outcome-Based Education (OBE).

Established by globally oriented and holistic leaders and educators of Team Revivalist Army, TSRGLI stands upon a unified vision to connect nations and cultures through accessible, transformative ecclesiastical education, cultivating scholarly excellence, spiritual formation, and global engagement across generations.

Committed to shaping future leaders, educators, and emerging generations, TSRGLI delivers rigorous, faith-centered education that cultivates scholarly excellence, professional integrity, and a global perspective; preparing learners for Christ – honoring service and transformative leadership across nations.

RELATED TOPICS

- [What is OBE?](#)
- [What is ODL?](#)
- [Our Vision](#)
- [Our Mission](#)





TEAM SRG LEADERSHIP INSTITUTE, INC.

Team SRG Leadership Institute (TSRGLI) is established as a haven that provides traditional and non-traditional outcome-based education, as well as offers options to school-leavers and potential leaders seeking assistance in **CONTINUING** and **UPGRADING** education.



OUR PURPOSE



TEAM SRG LEADERSHIP INSTITUTE THEOLOGICAL SEMINARY SCHOOL

PARTNERS & ASSOCIATES



A Member & Model School of:
**INTERNATIONAL ASSOCIATION
FOR THEOLOGICAL ACCREDITATION
(IATA)**



An Associate Member & Partner of:
**PHILIPPINE ASSOCIATION OF
BIBLE & THEOLOGICAL SCHOOLS
(PABATS)**



In Partnership with:
**TEAM MINISTRIES
INTERNATIONAL**



Media Partner:
PHILIPPINE NEWS EXPLORER





TEAM SRG LEADERSHIP INSTITUTE, INC.

V

VOICE – a medium for communication, understanding, and growth. Specialized learning program on how ideas are shared, knowledge is transmitted, and perspectives are shaped across communities and generations.

O

OFFER – program-focused, short-term courses designed to build practical competencies for emerging leaders. Programs emphasizing professional readiness and continuous improvement

I

INTEGRITY – is a core value in our school, guiding students to act with honesty, accountability, and respect in all areas of learning and leadership. We cultivate ethical decision-making, responsible scholarship, and character-driven excellence

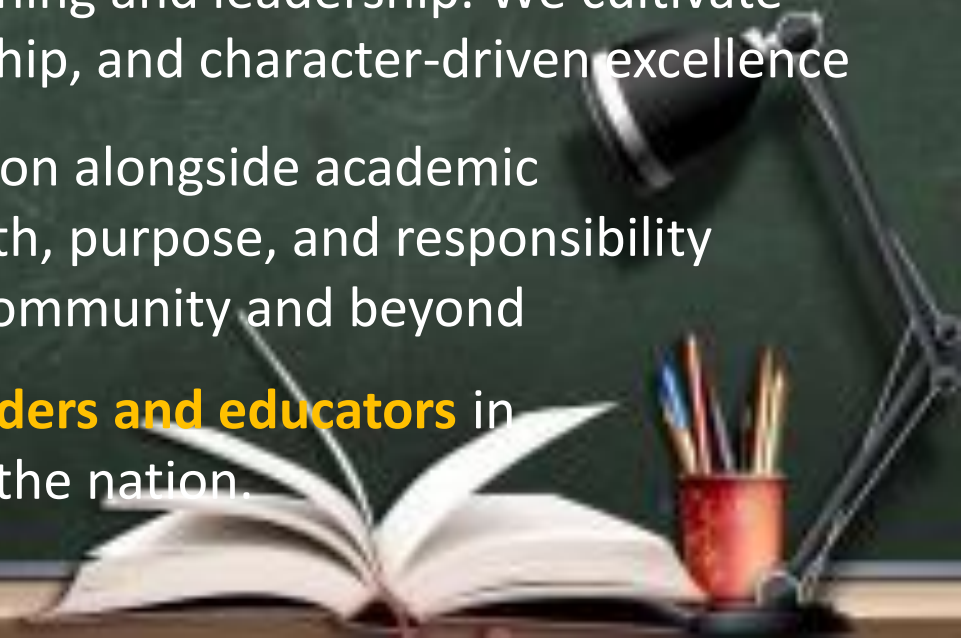
C

COMMITMENT – We uphold spiritual formation alongside academic excellence, nurturing students to live with faith, purpose, and responsibility while contributing positively to the campus community and beyond

E

ENGAGE – **Engaging globally competitive leaders and educators** in serving the sacred tasks and help strengthen the nation.

PROFICIENCY





TEAM SRG LEADERSHIP INSTITUTE, INC.

This distinguishing feature sets TSRGLI apart from the very beginning. We proudly offer comprehensive ecclesiastical programs for pastors and church workers who desire to pursue higher education and earn a degree while faithfully carrying out their ministry responsibilities. Through our innovative learning approaches, particularly the **Off-Campus Education by Extension (OCEE) Program**, a unique blend of traditional and non-traditional outcome-based instruction, we make quality theological education more accessible and achievable than ever before.



OUR SERVICES



TEAM SRG LEADERSHIP INSTITUTE, INC.



OFF-CAMPUS EDUCATION BY EXTENSION

OCEE is a distinct program designed to access educational services in a form of holistic open distance learning to continue higher level of education.



PROGRAM



TEAM SRG LEADERSHIP INSTITUTE, INC.

PROGRAM MISSION



NURTURING THEORETICAL UNDERSTANDING TO ELEVATE PROFESSIONAL LEARNING

Our specific mission is to serve a growing global community by equipping students with excellence in both theological education and professional practice, helping them meet the highest standards of ministry and leadership, and ensuring consistent quality at every stage of the learning process.





TEAM SRG LEADERSHIP INSTITUTE, INC.

PROGRAM TASK



NURTURING THEORETICAL UNDERSTANDING TO ELEVATE PROFESSIONAL LEARNING

By the end of the educational experience, each student should have achieved the goal. Without providing any form of assurance from any specified style of teaching or assessment, TSRGLI's Off-Campus Education by Extension (OCEE) Program classes, opportunities, and assessments will ensure students **achieve the specified outcome**.





TEAM SRG LEADERSHIP INSTITUTE, INC.

OUR PROGRAM



This is what makes us different and interesting! **TSRGLI offers exceptional features, including extensive educational services, providing COMPREHENSIVE, LADDERIZED, and TRANSITIONAL education and professional degrees for students who want to pursue further education and earn a degree while at work.**

Through our innovative methods of learning process, the “Off-Campus Education by Extension (OCEE) program”, a combination of traditional and non-traditional outcome-based education... we make things easy for you!





TEAM SRG LEADERSHIP INSTITUTE, INC.

OUR PROGRAM

OCEE PROGRAM

OFF-CAMPUS EDUCATION BY EXTENSION

What OCEE does?

This shift in the learning paradigm is both important and necessary in today's evolving educational landscape, where access to quality opportunities is often limited, and institutions must define a clear and meaningful purpose. TSRGLI was founded on this philosophy to provide accessible pathways for students, leaders, and associates to pursue upgrading and continuing education with a commitment to **“low cost, high impact”** academic distinction.





TEAM SRG LEADERSHIP INSTITUTE, INC.

Integrity is essential to our mission's success. We do what is right. Team SRG Leadership Institute (TSRGLI) is measured not only in economic or business terms, but by the respect, trust, and credibility we earn.



OUR VALUES



TEAM SRG LEADERSHIP INSTITUTE, INC.

OCEE PROGRAM

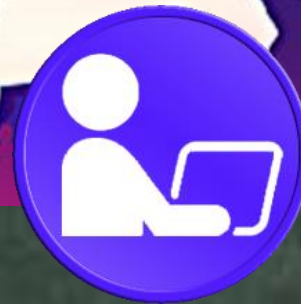
OFF-CAMPUS EDUCATION BY EXTENSION



**ECCLESIASTICAL
STUDIES**



**PROFESSIONAL
STUDIES**



PRACTICAL STUDIES

PLATFORM RANGE





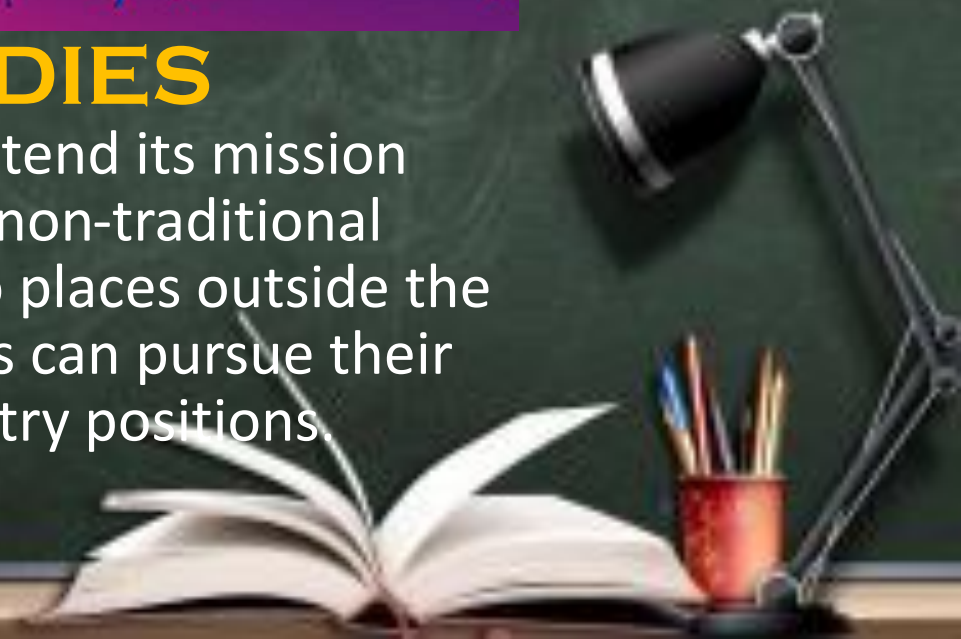
TEAM SRG LEADERSHIP INSTITUTE, INC.

OUR PROGRAM



ECCLESIASTICAL STUDIES

TSRGLI Ecclesiastical Studies (Seminary) serves to extend its mission by providing excellence in theological education in a non-traditional approach to the learning process and reaching out to places outside the school campus. In this manner of education, students can pursue their academic goals while maintaining their current ministry positions.





TEAM SRG LEADERSHIP INSTITUTE, INC.

OCEE PROGRAM

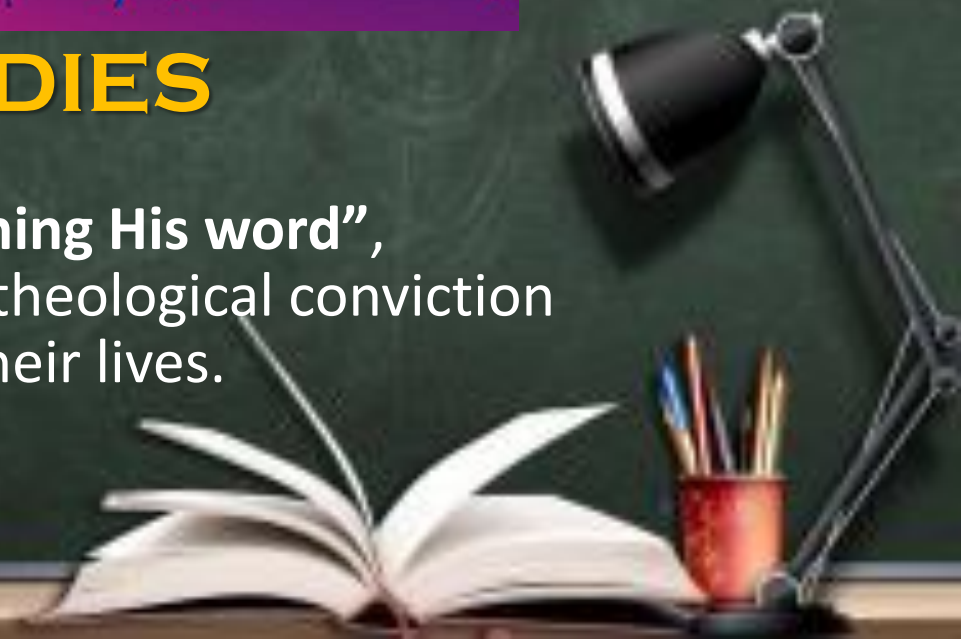
OFF-CAMPUS EDUCATION BY EXTENSION



ECCLESIASTICAL STUDIES

Reaching the world through preaching His Word!

Our slogan “Reaching the World through Preaching His word”, captures a generation of students with a strong theological conviction and strong foundation to fulfill God’s calling in their lives.



OUR PROGRAM



TEAM SRG LEADERSHIP INSTITUTE, INC.

Conversionism: the belief that life of all humans need to be changed by way of a "born again" decision to repent of their sins and accept Jesus as Lord and Savior.

Activism: the expression of the gospel in various ways, including missionary outreach and social reform.





TEAM SRG LEADERSHIP INSTITUTE, INC.

Biblicism: a particular regard for the Bible as the Word of God and the ultimate authority for religious belief and morality.

Crucicentrism: a stress on the substitutionary atonement by Christ on the cross.

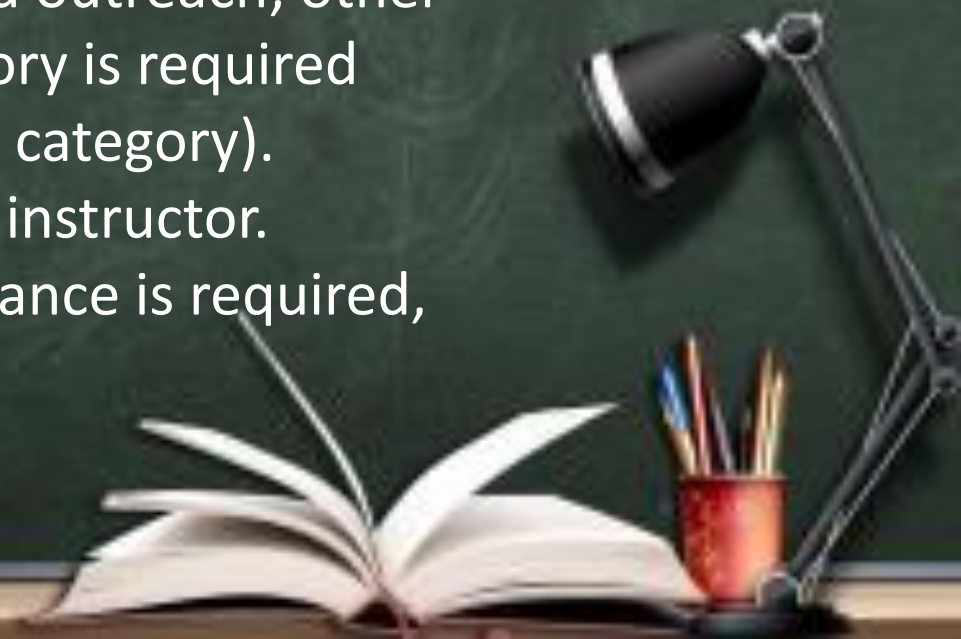




TEAM SRG LEADERSHIP INSTITUTE, INC.

ECCLESIASTICAL STUDIES

Each course has **six modules to complete**. The **first four modules are called the General Modules** and compulsory to all students. The **last two modules are called the Specialization Modules**. These modules cover specific, practical areas of pastoral ministry in six categories: specialized ministries; specialized pastoral care; evangelism and outreach; other topics. A minimum of two module from each category is required (no more than three modules may be from any one category). Modules will ordinarily involve as scheduled by the instructor. Credit will be assigned for modules. Student attendance is required, and assigned reading assignments.





TEAM SRG LEADERSHIP INSTITUTE, INC.

ECCLESIASTICAL STUDIES

BACHELOR'S DEGREE

**BACHELOR IN
BIBLICAL STUDIES**

**BACHELOR OF ARTS
IN THEOLOGY**

**BACHELOR OF ARTS
IN CHRISTIAN EDUC.**

**BACHELOR OF ARTS
IN MISSION**

MASTER'S DEGREE

**MASTER OF ARTS IN
MINISTRY LEADERSHIP**

**MASTERS IN INTER-
CULTURAL STUDIES**

**MASTER OF ARTS IN
CHRISTIAN EDUCATION**

**MASTER OF DIVINITY
MASTER OF THEOLOGY**

DOCTOR'S DEGREE

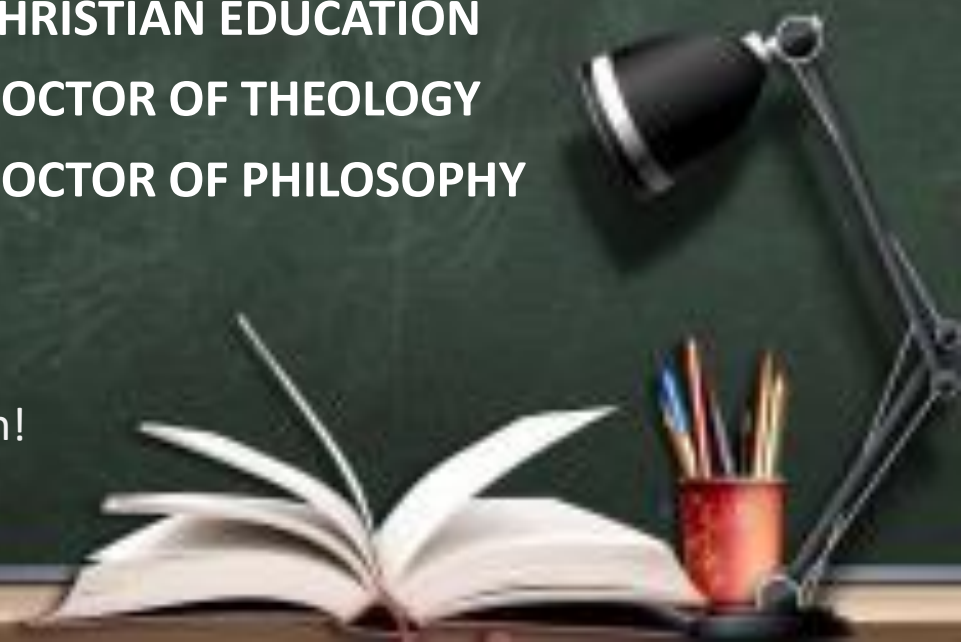
DOCTOR OF MINISTRY

**DOCTOR OF
CHRISTIAN EDUCATION**

DOCTOR OF THEOLOGY

DOCTOR OF PHILOSOPHY

NOTE: Master's and Doctor's programs are coming very soon!





PROFESSIONAL STUDIES

Each course has a yearly module program to complete. Our learning process and learning materials aligned with OBE through the following features:

LEARNING OBJECTIVES

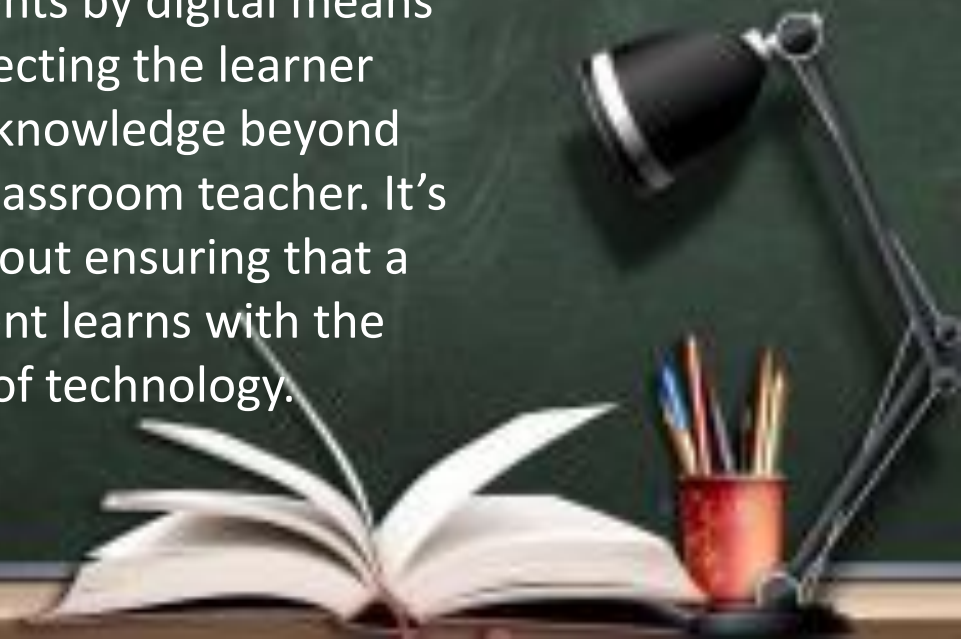
Statements that describe what learners/students are expected to develop by the time they finish a particular chapter. This may include the cognitive, psychomotor, and affective aspects of learning.

EXPERIENTIAL LEARNING ACTIVITIES

This includes activities that are flexible in nature. This may include classroom/field/research activities, simulation exercises, and actual experiences in real-life situations.

CHAPTER ON-LINE

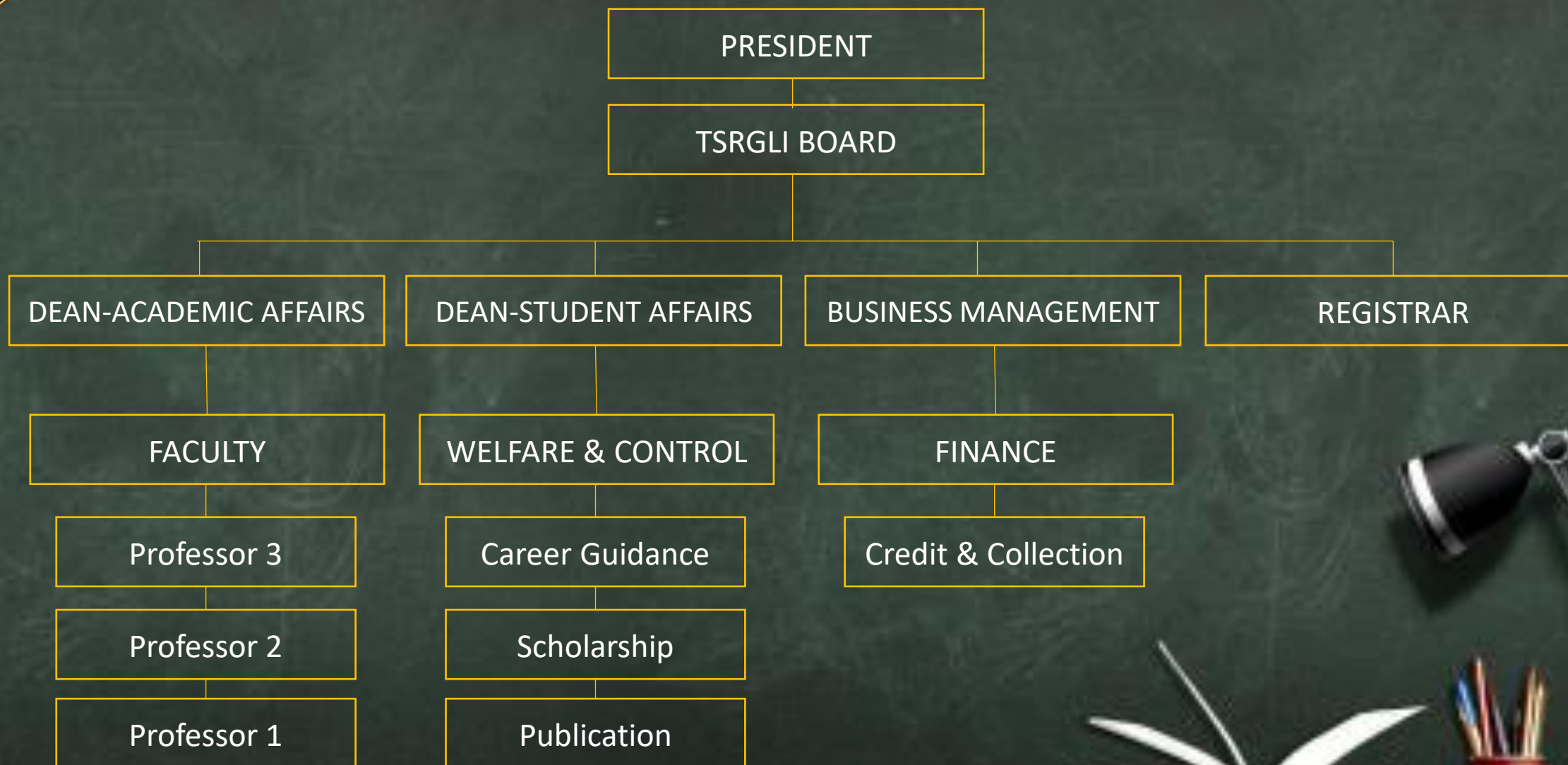
Connecting & engaging students by digital means connecting the learner with knowledge beyond the classroom teacher. It's all about ensuring that a student learns with the help of technology.





TEAM SRG LEADERSHIP INSTITUTE, INC.

ORG CHART





WHAT IS OBE

OBE (Outcome-Based Education) means clearly focusing and organizing everything in an educational system around what is essential for all students to be able to do successfully at the end of their learning experiences. This means starting with a clear picture of what is important for students to be able to do, then organizing the curriculum, instruction, and assessment to make sure that this learning ultimately happens.

The Commission on Higher Education (CHED) required the implementation of **Outcome-Based Education (OBE)** in Philippine universities and colleges in **2012 through CHED Memorandum Order No. 46.**





WHAT IS ODL

**AN ACT EXPANDING ACCESS TO EDUCATIONAL SERVICES BY
INSTITUTIONALIZING OPEN DISTANCE LEARNING IN LEVELS OF
TIRTIARY EDUCATION AND APPROPRIATING FUNDS THEREFORE.**

Begun and held in Metro manila on Monday, July 28, 2014





TEAM SRG LEADERSHIP INSTITUTE, INC.

OUR VISION

ENABLE QUALITY EDUCATION WITHOUT
BARRIERS IN A BORDERLESS WORLD.

RELATED TOPICS





TEAM SRG LEADERSHIP INSTITUTE, INC.

OUR MISSION

To cater to a growing niche in the global race of education by preparing and helping students to meet the highest standards of a particular profession while ensuring predictability in quality in their learning process.

By the end of the educational experience, each student should have achieved the goal. Without providing any form of assurance from any specified style of teaching or assessment, TSRGLI's **OFF-CAMPUS EDUCATION BY EXTENSION (OCEE) Program** classes, opportunities, and assessments will ensure students achieve the specified outcome.

RELATED TOPICS

