

Project Name: _____
Location: _____
Item No: _____
Model No: _____
Quantity: _____

AcGuard

PIZZA / BAKERY DISPLAY CASE



PIZZA / BAKERY DISPLAY CASE, SINGLE BAY PANEL



OPEN AT SERVER'S SIDE, WITH
GLASS AT FRONT, TOP, AND SIDES.

PIZZA DISPLAY CASE WITH 2 BAY PANELS

PIZZA / BAKERY DISPLAY CASE

ENHANCE AND PROTECT FOOD PRODUCT WITH A PIZZA DISPLAY CASE, FULL SERVICE STYLE; THE IDEAL DISPLAY CASE FOR ANY RESTAURANT. STYLISH AND FUNCTIONAL. FULLY OPEN AT SERVER'S SIDE. THE SQUARE SLIM SERIES ARE 1" SQUARE TUBING CONSTRUCTION AND IS AVAILABLE IN THREE STANDARD SIZES, WITH END PANELS, SINGLE BAY GLASS PANEL OR DOUBLE BAY GLASS PANELS. CUSTOM SIZE IS AVAILABLE.

STANDARD MODEL FEATURES

- 1" SQUARE STAINLESS STEEL POST
- SOLID STAINLESS STEEL GLASS CLAMPS
- STAINLESS STEEL FLANGE POST
- 1/4" THICK CLEAR TEMPERED GLASS
- CUSTOM SIZE IS AVAILABLE
- END PANELS ARE INCLUDED

SPECIFICATIONS

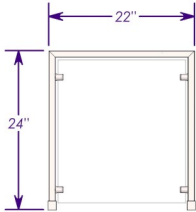
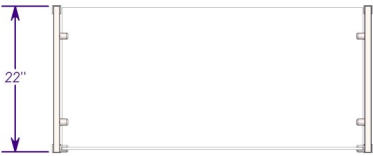
1" SQUARE STAINLESS STEEL TUBING CONSTRUCTION WITH SOLID STAINLESS STEEL GLASS CLAMPS, FLANGE POST AND END CAPS. STAINLESS STEEL TUBING SHALL BE 304 TYPE WITH #4 FINISH (BRUSHED) TIG WELDED CONSTRUCTION, CLEAN AND POLISHED TO A SMOOTH FINISH. 1/4" THICK TEMPERED GLASS WITH FLAT POLISHED EDGES AT ALL SIDES (NO SHARP EDGES).

AVAILABLE SIZES

THE PIZZA DISPLAY CASE IS FULLY OPEN AT SERVER'S SIDE AND IS AVAILABLE IN THREE STANDARD SIZES. END PANELS ARE INCLUDED TO MEET NSF CODE. CUSTOM SIZE/ LENGTH AVAILABLE. CONSULT FACTORY FOR CUSTOM SIZE



MODEL VIEWS

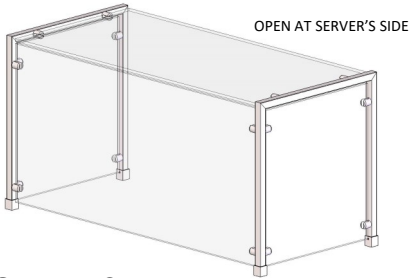


SIDE VIEW

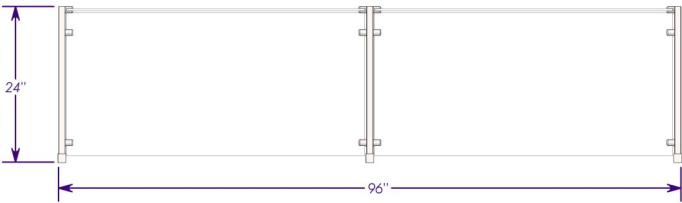
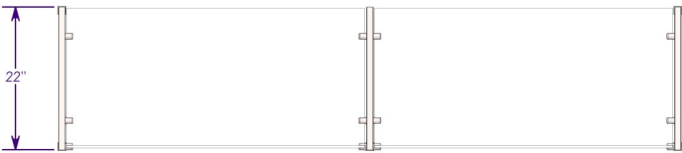
MODEL PD-SQ-4

MODEL	SIZE	BAY	O.A. SIZE
PD-SQ-4	48"	1	48"
PD-SQ-6	72"	2	72"
PD-SQ-8	96"	2	96"

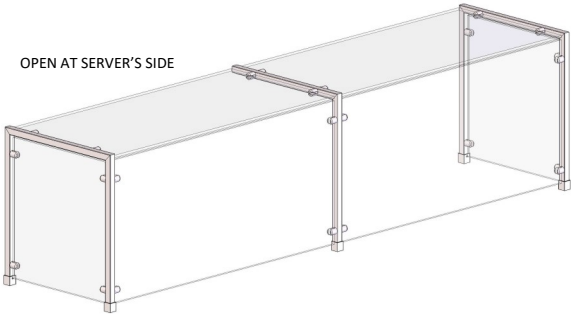
OVER ALL SIZE (O.A.) IS THE OUTSIDE DIMENSION OF THE PIZZA DISPLAY CASE. OPEN AT SERVER'S SIDE, WITH GLASS AT FRONT, TOP, AND SIDES.



ISOMETRIC VIEW

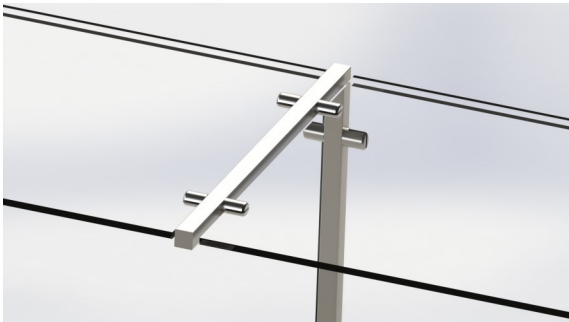
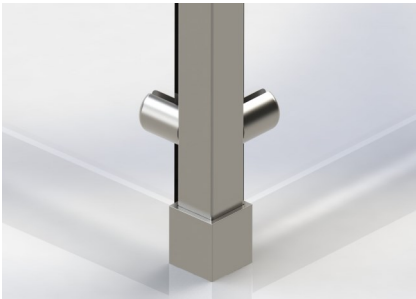


MODEL PD-SQ-8



ISOMETRIC VIEW

ALL STAINLESS STEEL FABRICATION; TIG WELDED CONSTRUCTION, CLEAN AND POLISHED TO A SMOOTH FINISH.



FULLY WELDED CENTER POST, FULLY OPEN AT SERVER'S SIDE

