



Harborough  
Lights  
Lighting Design Consultancy

PRICED VERSION

OUTDOOR

# inspired by lighting

As a high street retailer in a competitive market, we understand that our customers have many choices on where to shop, both on the high street and online. With this in mind, we have designed and sourced a unique lighting range, which we are proud to offer our customers. We have historically offered a wide array of products, suitable for all needs and this new range is certainly no exception.

Whether you are looking for that unique statement piece with outstanding design, have a project to complete or just want something that is not run of the mill, then this catalogue will fill you with design ideas, the highest of quality products, and a huge range of over 1500 items. In fact, with a little bit of creativity the possibilities are endless. This catalogue has taken decades of experience, picking out inventive, outstanding design concepts, not just as single products, but many ranges offering complementing suites of lighting to suit all your needs. From traditional to modern and contemporary, indoor and outdoor, this catalogue collection has everything to transform the ambience of any residential or commercial environment.

We pride ourselves on offering a personalised service to all of our customers. We endeavour to provide that personal touch to ensure you are guided and advised to purchase the most appropriate lighting for your needs and have a professional experience. You can rest assured that you can contact us for any after sales service you may require, but most importantly the new collective offers something for everyone at exceptional prices.

Whilst we hope you find our latest collections inspiring, we also value any customer feedback and look forward to being of service to you.

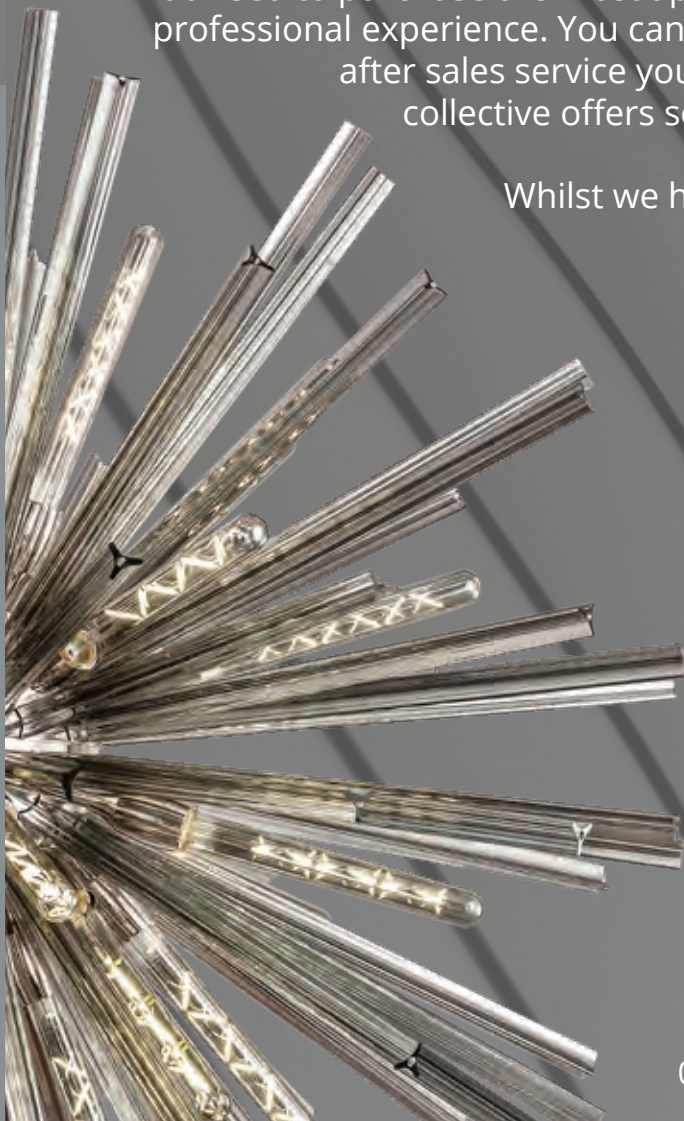
...let there be light

All information provided in this catalogue is approximate for guidance only and are subject to alteration and modification. Goods supplied may vary in detail from the illustrations, drawing and descriptions as a result of improvements. Colour finishes will be maintained as accurately as possible, but matching cannot be guaranteed.

No part of this catalogue may be reproduced or modified without the written consent of respective copyright owners.

E. & O. E.

© 2019-2021 Respective Owners - All rights reserved



Range Characteristics:  
Unique IP65 Concept  
Attractive Colour Finish  
2 Years Warranty



remember, outdoor products can also be used indoors!



polycarbonate sphere



**HL3852 NOW: £180.00**

↓ 385 ↔ 150 ↔ 180 (mm)

1 x E27 25W

Titanium Silver/Polished Chrome/Clear

**HL3853 NOW: £156.00**

Ø 150 ↓ 270-1270 (mm)

1 x E27 25W

Titanium Silver/Polished Chrome/Clear



IP65

## SCHWALBENKOFEL

This modern industrial design, which combines titanium silver and polished chrome colour finishes, presents a single pendant and wall lamp suitable for lone use or as a family. The unexpected twist of this range is that each item is IP65 rated allowing you to bring a traditionally indoor feature outdoors, ideal for your outdoor living area.

Range Characteristics:  
Unique IP65 Concept  
Attractive Colour Finish  
2 Years Warranty

attention  
to detail

great  
combination

compact & full  
of charisma



HL3842 **NOW: £134.00**  
Ø 150 ↓ 245–1280 (mm)  
1 x E27 25W  
Matt Black/Brushed Bronze/Clear



HL3841 **NOW: £150.00**  
↓ 345 ↔ 150 ↔ 190 (mm)  
1 x E27 25W  
Matt Black/Brushed Bronze/Clear

  
IP65

## ARGENTIERE

The small globe outline of these fittings is enhanced with their mixture of matt black and brushed bronze colour finishes. The wall lamp and single pendant take E27 lamps creating a myriad of lighting solutions. This range is unexpectedly IP rated giving you the option to build a more characteristically homely area in an outdoor setting.

Range Characteristics:  
Unique IP65 Concept  
Attractive Colour Finish  
2 Years Warranty



  
IP65



HL3848 **NOW: £219.00**

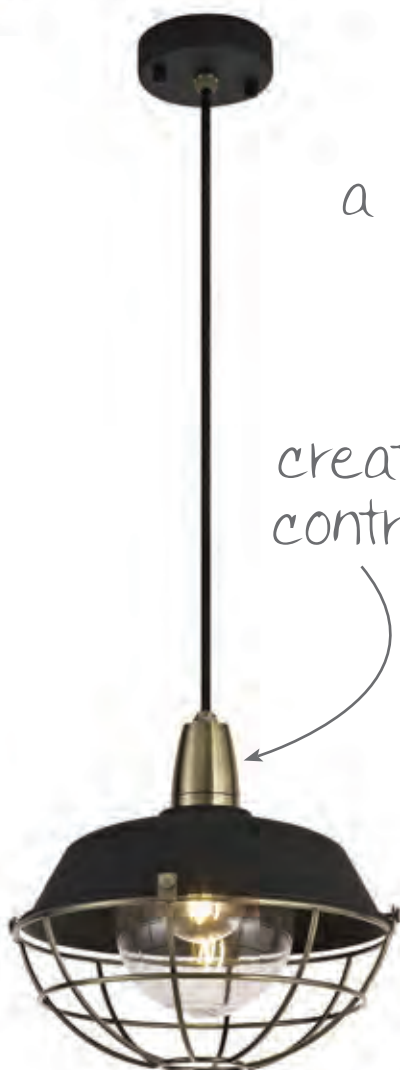
Ø 250 ↓ 275 (mm)

1 x E27 25W

Matt Black/Antique Brass/Clear

a completely unique concept  
in exterior lighting

creative  
contrast



HL3847 **NOW: £222.00**

Ø 250 ↓ 270-1300 (mm)

1 x E27 25W

Matt Black/Antique Brass/Clear



HL3846 **NOW: £252.00**

↓ 340 ↔ 250 → 450 (mm)

1 x E27 25W

Matt Black/Antique Brass/Clear

# HOCHGOLLING

The hexagonal form of this collection is devised from a matt black opaque top with the bottom half an antique brass open grid cover to project the light in a downward direction. Each fitting uses E27 lampholders which are sheltered by a clear glass globe. You would typically assume these fixtures are for indoor use however every item has an IP65 rating.

Range Characteristics:  
Unique IP65 Concept  
Attractive Colour Finish  
2 Years Warranty

surface mount



HL3851 **NOW: £179.00**  
Ø 250 ↓ 320 (mm)  
1 x E27 25W  
Matt Black/Grey/Clear



IP65



HL3850 **NOW: £176.00**  
Ø 250 ↓ 310-1320 (mm)  
1 x E27 25W  
Matt Black/Grey/Clear

latest  
colour  
finishes



HL3849 **NOW: £227.00**  
↓ 385 ↔ 250 ↗ 450 (mm)  
1 x E27 25W  
Matt Black/Grey/Clear

# REINHART

The E27 lampholder is sheltered beneath the matt black, round dome shade and the grey caging fixed to the bottom of the dome creates a spherical outline. As standard outdoor lighting tends to have its own niche, this collection stands out because it uniquely takes a design concept more commonly seen on indoor lighting and makes it IP rated.

  
IP65



HL3843 **NOW: £243.00**

↓ 380 ↔ 250 ↔ 430 (mm)

1 x E27 25W

Anthracite/Matt White/Clear



outdoor lighting  
redesigned

polycarbonate  
sphere

HL3840 **NOW: £153.00**

↓ 380 ↔ 150 ↔ 215 (mm)

1 x E27 25W

Anthracite/Matt White/Clear

JULY

A 3D diamond shape acts as the outline shape housing the E27 lampholder and clear round glass. Along with the available matching wall lamp, these are fittings you would commonly expect to find within an indoor setting but both lights are actually IP65 rated for exterior use. This range expands the boundaries of outdoor lighting.

Range Characteristics:  
Unique IP65 Concept  
Attractive Colour Finish  
2 Years Warranty

  
IP65

1.5m rubber  
cable

modern creative  
design



HL3845 **NOW: £198.00**

Ø 250 ↓ 300 (mm)

1 x E27 25W

Anthracite/Matt White/Clear

metal cage



HL3844 **NOW: £198.00**

Ø 250 ↓ 300-1350 (mm)

1 x E27 25W

Anthracite/Matt White/Clear



Range Characteristics:  
3000K Warm White  
Not Dimmable  
3 Years Warranty

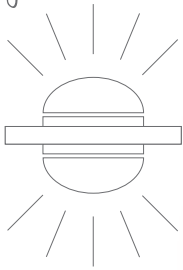
*elegantly slim*

  
IP54

HL4312 **NOW: £105.00**

↓ 260 ↔ 60 ↪ 65 (mm)  
2 x Integral LED 3W, 300lm  
Black/Opal White

*bidirectional  
light source*



*also available in  
chrome  
see page 353*

HL3605 **NOW: £105.00**

↓ 260 ↔ 60 ↪ 65 (mm)  
2 x Integral LED 3W, 300lm  
Dark Grey/Opal White



# GIFERSPITZ

Available in either a dark grey, black or polished chrome colour finish the tubular form of these wall lights is reminiscent of metal piping with two embedded rings at either end. The integral 3000K LEDs give the fitting an extended longevity of use along with the durability of the fixtures given their IP54 rating making them suitable for outdoor use.

LED driver built-in

Range Characteristics:  
3000K Warm White  
Not Dimmable  
3 Years Warranty



**HL3830 NOW: £188.00**  
Ø 240 ⇨ 54 (mm)  
1 x Integral LED 13W, 300lm  
Gloss Black

translucent edge

  
IP65

gloss finish



**HL3831 NOW: £188.00**  
Ø 240 ⇨ 54 (mm)  
1 x Integral LED 13W, 300lm  
Gloss White

## ORSIERA

Available in a black or white colour, this flush outdoor wall lamp has a surround of integral LEDs producing an angelic Orsiera of illumination around the front plate. The IP65 rating is perfect for exterior areas as well as use within the home or workplace. The high gloss finish creates endearing translucent reflections of the compassing environment.

Range Characteristics:  
3000K Warm White  
Not Dimmable  
3 Years Warranty



5mm glass plate

HL3827 **NOW: £123.00**  
↓ 80 ↔ 80 ↗ 55 (mm)  
1 x Integral LED 1.8W, 70lm □  
White



IP65

driver built-in



HL3826 **NOW: £123.00**  
↓ 80 ↔ 80 ↗ 55 (mm)  
1 x Integral LED 1.8W, 70lm □  
Black



HL3829 **NOW: £150.00**  
↓ 80 ↔ 120 ↗ 55 (mm)  
1 x Integral LED 3.3W, 145lm □  
White



HL3828 **NOW: £150.00**  
↓ 80 ↔ 120 ↗ 55 (mm)  
1 x Integral LED 3.3W, 145lm □  
Black

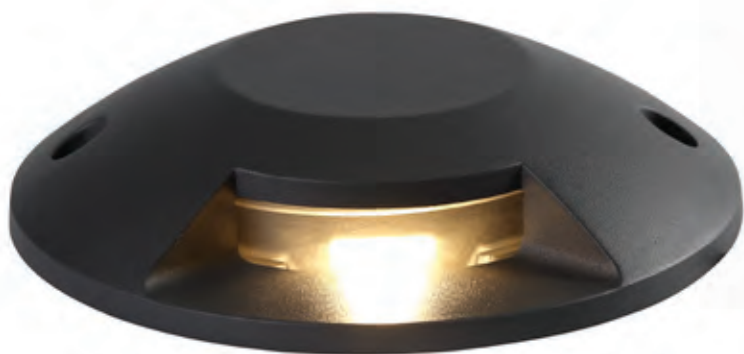
50mm recess depth

## CORNOUR

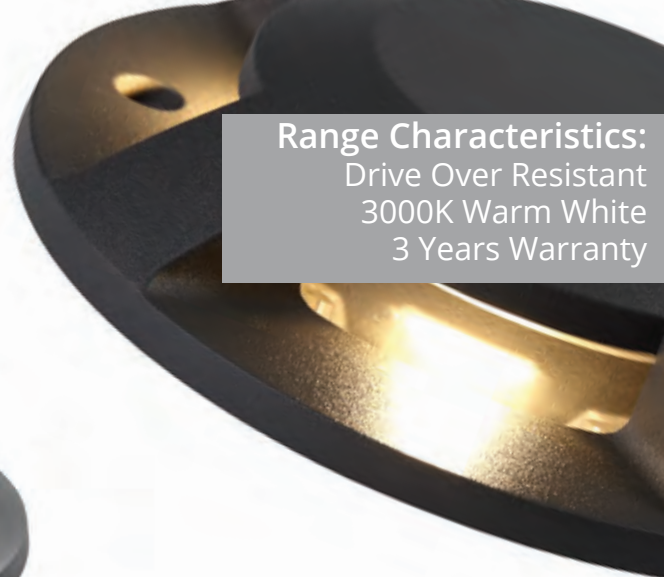
Recessed wall lights are ideal for outdoor areas such as lighting pathways, pool areas or gardens without causing obstruction. These fashionable IP65 rated fixtures are formed with modern, chic panes of black or white glass. The integral LEDs are set back at an angle to better direct the projection of light. Each colour is available in two sizes; a small square or a larger rectangle.

LED driver built-in

Range Characteristics:  
Drive Over Resistant  
3000K Warm White  
3 Years Warranty



HL3823 **NOW: £180.00**  
Ø 200 ↓ 45 (mm)  
1 x Integral LED 6W, 165lm  
Anthracite

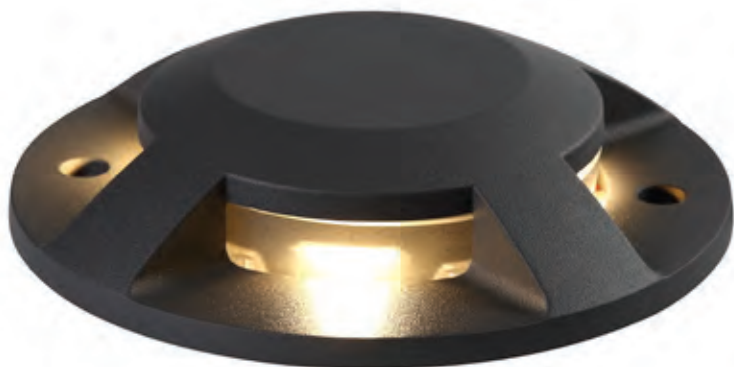


surface mounted



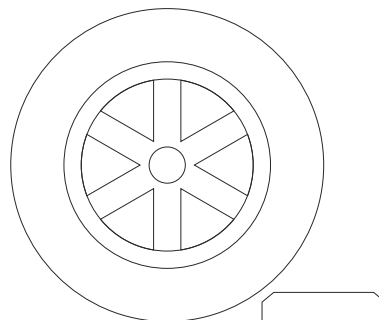
HL3824 **NOW: £201.00**  
Ø 200 ↓ 45 (mm)  
2 x Integral LED 6W, 236lm  
Anthracite

IP67



HL3825 **NOW: £219.00**  
Ø 200 ↓ 45 (mm)  
4 x Integral LED 3W, 256lm  
Anthracite

drive over  
up to 2 ton @ 15mph



# MEIJE

Due to popular demand we have added a range of drive over Above Ground (NO DIGGING REQUIRED) lights all with an IP67 rating. These round plates in an anthracite finish are available in a 1, 2 or 4 light version, the dark finish successfully disguises any dirt from the outdoor environment while the integral LEDs provide a longevity of use.



3000K

stainless steel components

IP65



2m of cable

**HL4178 NOW: £104.00**

↗ 60 ↘ 280 ↔ 105 (mm)  
2 x Integral LED 3W, 420lm □  
Grey/Black



**HL4179 NOW: £50.00**

↗ 60 ↘ 270 ↔ 100 (mm)  
1 x GU10 35W  
Black

suitable for direct mounting

# BARENHORN

A collection of inground spike lights, this range fits securely into your garden to give an adjustable spotlight. The angled heads for the integral 3000K LED or GU10 light sources not only look high end and decorative but also offer the freedom to angle the illumination to highlight a particular area or even use the beams of lights to create a feature of their own.

Range Characteristics:  
Spike or Wall Mountable  
GU10/Integrated Versions  
3 Years Warranty

2m of cable



can also be mounted without the spike

HL4175 **NOW: £44.00**  
↗ 45 ↘ 260 ↔ 70 (mm)  
1 x Integral LED 3W, 210lm  
Grey/Black

integral 3000K LED  
driver built-in



HL4176 **NOW: £63.00**  
↗ 65 ↘ 285 ↔ 80 (mm)  
1 x Integral LED 7W, 490lm  
Grey/Black



high quality engineering

HL4177 **NOW: £114.00**  
↗ 80 ↘ 300 ↔ 90 (mm)  
1 x Integral LED 15W, 1050lm  
Grey/Black

IP65



durable die cast  
construction



  
IP54

great craftsmanship

HL4372 **NOW: £209.00**

↑ 380 ↔ 170 → 200 (mm)

1 x E27 60W

Black/Gold/Clear

## MONTCALM

This is a beautiful IP54 rated collection of cubic lantern frames. The clear glass panes are decoratively enhanced by black triangular metal pieces reflective of old world window grilles. The black frames are perfectly offset against the stunning gold painted edges of the lantern forms.

This attractive design is available as a small or large wall light as well as a single pendant.

Range Characteristics:

Hand Painted Finish

Aluminium & Glass

2 Years Warranty

hand finished  
effect



HL4371 **NOW: £167.00**

↓ 310 ↔ 170 → 200 (mm)

1 x E27 60W

Black/Gold/Clear

  
IP54

realistic wood  
effect



HL4373 **NOW: £179.00**

↗ 170 ↓ 400-1400 ↔ 170 (mm)

1 x E27 60W

Black/Gold/Clear





IP44

rain drop effect



HL4247 **NOW: £83.00**

↓ 239 ↔ 122 ↔ 159 (mm)

1 x E27 40W

Sand Black/Clear Seed

small & mighty



traditional caged lantern  
with seeded glass

HL4248 **NOW: £83.00**

↓ 243 ↔ 121 ↔ 158 (mm)

1 x E27 40W

Sand Black/Clear Seed

# PUIGMAL

This selection of four different E27 IP44 wall lamps each replicate a classic outdoor lantern motif. The sand black criss cross patterns are partnered with a clear seeded effect glass which gives the illusion of raindrops within the glass. The more open framed wall light in antique bronze also features the same glass design with a clearer view of the glass design and it's interior while the fourth grid like design in antique bronze encircles a clear glass.

Range Characteristics:  
Compact Attractive Designs  
Aluminium & Glass  
2 Years Warranty



a little lantern  
of cuteness with  
lots of light

HL4250 **NOW: £83.00**

↓ 233 ↔ 150 → 203 (mm)

1 x E27 40W

Antique Bronze/Clear Seed

compact fixtures,  
bursting with character

a special antique  
bronze finish



IP44



HL4249 **NOW: £83.00**

↓ 261 ↔ 155 → 197 (mm)

1 x E27 40W

Antique Bronze/Clear

Range Characteristics:  
Unique Gold For Outdoor  
Clear Glass Cylinder  
2 Years Warranty



HL3583 **NOW: £149.00**  
↓ 400 ↔ 160 → 200 (mm)  
1 x E27 60W  
Black/Gold/Clear



HL3582 **NOW: £123.00**  
↓ 310 ↔ 130 → 165 (mm)  
1 x E27 60W  
Black/Gold/Clear

glass cylinder

pioneering outdoor  
finish



HL3584 **NOW: £128.00**  
Ø 130 ↓ 480-1080 (mm)  
1 x E27 60W  
Black/Gold/Clear

IP54

POUZENC

Another unique concept for your outdoor lighting needs, this IP54 collection of black cylindrical frames with clear glass panes are enhanced by the substantial gold metal arch that begins within the bottom of the frame and protrudes above the top. The stylish contrast of this gold component against the dark black finish is an increasingly popular and coveted lighting design.

Range Characteristics:  
Elegant Gold Detail  
Clear Seeded Glass  
2 Years Warranty

  
IP54

seeded glass

hand finished gold detail



HL3197 **NOW: £119.00**  
Ø 170 ↓ 370-970 (mm)  
1 x E27 60W  
Black/Gold/Clear



HL3196 **NOW: £119.00**  
↓ 255 ↔ 170 ↔ 217 (mm)  
1 x E27 60W  
Black/Gold/Clear

## HOCHKONIG

This durable IP54 rated collection houses E27 lampholders within a bell shaped frame and is finished in a black/gold colour which coats the metal framework. The character of this range is enhanced by the clear glass which is moulded with small bubbles to mimic fine raindrops, an ingenious feature for an outdoor lighting range.



bigger brother



HL3431 **NOW: £177.00**  
↓ 390 ↔ 230 ↔ 250 (mm)  
1 x E27 60W  
Antique Bronze/Clear



IP54

sophisticated finish

HL3199 **NOW: £129.00**  
↓ 307 ↔ 180 ↔ 200 (mm)  
1 x E27 60W  
Antique Bronze/Clear



HL3198 **NOW: £99.00**  
↓ 300 ↔ 127 ↔ 150 (mm)  
1 x E27 60W  
Antique Bronze/Clear

# WILDGRAT

This range is the perfect option for combining a traditional style with a modern twist within an outdoor setting giving an ultimate display of character. The old fashioned lantern style, paired with the clear glass cylinders which are encased in a rustic antique bronze frame, perfectly emulate the style of lamps most commonly associated with the 19th century.

Range Characteristics:  
Refined Rustic Finish  
Impressive Glass/Mesh  
2 Years Warranty

  
IP54



**HL3432 NOW: £179.00**  
Ø 230 ↓ 1040 (mm)  
1 x E27 60W  
Antique Bronze/Clear



**HL3316 NOW: £120.00**  
Ø 180 ↓ 400-960 (mm)  
1 x E27 60W  
Antique Bronze/Clear

*mesh & glass*



**HL3317 NOW: £126.00**  
↓ 402 ↔ 180 (mm)  
1 x E27 60W  
Antique Bronze/Clear

*sturdy base*



impressive engineering

HL3556 **NOW: £119.00**

↓ 355 ↔ 170 → 200 (mm)

1 x E27 60W

Antique Bronze/Clear

IP54



open bottom  
design

HL3559 **NOW: £179.00**

Ø 350 ↓ 150 (mm)

2 x E27 60W

Antique Bronze/Clear

# FAVRE

This range provides an IP54 rated outdoor collection. These fixtures are coated in an antique bronze colour finish to complement the vintage lantern style and blend seamlessly with woodland colours. Each fixture holds a single E27 lampholder which is encircled with textured glass panes that are moulded with large dimples which when lit form subtle reflections.

Range Characteristics:  
Classic Vintage Finish  
Impressive Metalwork  
2 Years Warranty



dimpled glass

IP54

rustic  
antique bronze

**HL3558 NOW: £180.00**  
Ø 190 ↓ 790 (mm)  
1 x E27 60W  
Antique Bronze/Clear



**HL3557 NOW: £128.00**  
Ø 170 ↓ 500 (mm)  
1 x E27 60W  
Antique Bronze/Clear





seeded glass

IP54



HL3579 **NOW: £150.00**

↓ 315 ↔ 180 → 205 (mm)

1 x E27 60W

Brushed Black Gold/Seeded Clear



HL3580 **NOW: £215.00**

↓ 425 ↔ 240 → 260 (mm)

1 x E27 60W

Brushed Black Gold/Seeded Clear

hand painted  
finish



HL3581 **NOW: £134.00**

↓ 310 ↔ 240 → 120 (mm)

1 x E27 60W

Brushed Black Gold/Seeded Clear

# BRUNNISTOCK

The brushed black gold finish of these IP54 outdoor wall lamps, projects a traditional antique ambience perfectly complementing the classic lantern design of the framework. The hanging lantern wall lamp in two sizes is more in keeping with the original fixtures of its time whereas the flush wall lamp offers a more space conserving option.

Range Characteristics:  
Modern Open Design  
Large Seeded Glass Globe  
2 Years Warranty

seeded glass



large glass globe

HL3781 **NOW: £165.00**

↓ 290 ↔ 230 ↗ 260 (mm)

1 x E27 60W

Anthracite/Seeded Clear

  
IP54

# WEISSHORN

This outdoor wall lamp uses a uniform cube frame with open faces to offer a clear view of the unique glass globe. The clear seeded glass acts a protective seal around the E27 lampholder giving the fixture an IP54 rating whilst also providing a stylish feature appropriate for outdoor lighting. The dark anthracite colour finish offers extra durability against all types of weather.

**Range Characteristics:**

Black Iron Framework

Crackled Glass

2 Years Warranty



**HL3318 NOW: £108.00**

↓ 292 ↔ 170 → 198 (mm)

1 x E27 60W

Black/Clear

surface mount



**HL3319 NOW: £68.00**

Ø 162 ↓ 187 (mm)

1 x E27 60W

Black/Clear

crackled glass

IP54

TENDA

The most captivating design feature of this IP54 outdoor lantern collection is the crackled effect of the clear glass embedded into the black iron framework. This distressed feature offers a unique filtration of light from the E27 lampholder resulting in an attractive light dispersal. Including a matching wall and ceiling light, this range offers various outdoor lighting solutions.

Range Characteristics:  
Elegant Gold Detail  
Large Clear Seeded Glass  
2 Years Warranty



HL3195 **NOW: £138.00**  
↑ 345 ↔ 225 ⇨ 245 (mm)  
1 x E27 60W  
Black/Gold/Clear




HL3314 **NOW: £158.00**  
Ø 175 ↓ 400-960 (mm)  
1 x E27 60W  
Black/Gold/Clear

  
IP54

*hand finished gold detail*



*substantial seeded glass*



# CHABRIERES

The wall lamp and pendant follow a vintage theme reminiscent of the classic lanterns used on sailing boats. A clear bell glass, formed with small bubbles to replicate fine drops of water, safely houses an E27 lampholder. The nautical nature of the gridline frame complements the glass feature whilst providing an added defence against outdoor elements.

Range Characteristics:  
Contemporary Design  
Substantial Metalwork  
2 Years Warranty



  
IP54

HL3782 **NOW: £126.00**  
↓ 345 ↔ 135 → 170 (mm)  
1 x E27 60W  
Anthracite/Clear

contemporary  
design & finish

## RAMULAZZ

The criss cross form of this IP54 rated wall lamp presents a creative design feature for any outdoor setting. With the E27 lampholders allowing a maximum of 60W it allows you to use a lamp of your choice which gives ample light for your outdoor area. The dark anthracite colour finish ensures a longer durability against the abrasive elements of the outdoors and various

Range Characteristics:  
Creative Open Design  
Raindrop Effect Glass  
2 Years Warranty

  
IP54



raindrop  
glass

HL3780 **NOW: £144.00**  
↓ 320 ↔ 185 → 180 (mm)  
1 x E27 60W  
Anthracite/Clear Raindrops

## PETTINI

A pentagonal prism design with glass faces creates the angled outline of this outdoor IP54 rated wall lamp. The dark anthracite finish is durable against adverse weather, while the protected E27 lampholder is surrounded by an attractive and captivating dimpled, clear glass cylinder projecting the illusion of small raindrops within the panes, an effect suitable for outdoor lighting.

Images are not to scale

480



tough construction

Range Characteristics:  
3 Colour Options  
Robust Construction  
2 Years Warranty

HL3560 **NOW: £129.00**  
↓ 260 ↔ 180 ↳ 160 (mm)  
1 x E27 60W  
Silver Grey/Clear

IP54



HL3561 **NOW: £129.00**  
↓ 260 ↔ 180 ↳ 160 (mm)  
1 x E27 60W  
Antique Bronze/Clear



seeded glass

HL3562 **NOW: £129.00**  
↓ 260 ↔ 180 ↳ 160 (mm)  
1 x E27 60W  
Anthracite/Clear

## MEDUCE

This range combines design aspects from both glass display cases and vintage lanterns. The transparent glass panes clearly display the E27 lamp used, which is ideal when the fixture is being used along with a decorative lamp. With an IP54 rating the seeded effect of the glass subtly mimics raindrops, compatible for an outdoor fixture.



smoked acrylic  
diffuser



HL3775/SM **NOW: £80.00**

↓ 200 ↔ 90 ↗ 125 (mm)

1 x E27 20W

Anthracite/Smoked



IP54



can be  
mounted in any  
direction

HL3776/SM **NOW: £105.00**

↓ 330 ↔ 90 ↗ 125 (mm)

2 x E27 20W

Anthracite/Smoked

CHAMONIX

An attractive selection of outdoor IP54 fixtures which are created from slim tubular forms. The smoked or opal glass, which sit within the anthracite frames provides a translucent casing for the E27 lamp while the clear glass provides a transparent view. A selection of different sized wall lamps and post lamps makes this contemporary design suitable for any garden.

Range Characteristics:  
3 Colour Options  
Acrylic Cover-Metal Detail  
2 Years Warranty

modern  
appearance



HL3779/SM  
**NOW: £156.00**  
Ø 90 ↓ 900 (mm)  
1 x E27 20W  
Anthracite/Smoked

complementing  
trim



HL3778/SM  
**NOW: £131.00**  
Ø 90 ↓ 650 (mm)  
1 x E27 20W  
Anthracite/Smoked



HL3777/SM  
**NOW: £108.00**  
Ø 90 ↓ 450 (mm)  
1 x E27 20W  
Anthracite/Smoked

IP54

OUTDOOR





opal acrylic  
diffuser

HL3775/OP **NOW: £104.00**  
↓ 200 ↔ 90 ↳ 125 (mm)  
1 x E27 20W  
Anthracite/Opal



IP54

HL3776/OP **NOW: £155.00**  
↓ 330 ↔ 90 ↳ 125 (mm)  
2 x E27 20W  
Anthracite/Opal

↑  
can be  
mounted in any  
direction  
↓

Range Characteristics:  
3 Colour Options  
Acrylic Cover-Metal Detail  
2 Years Warranty



HL3779/OP  
**NOW: £181.00**  
Ø 90 ↓ 900 (mm)  
1 x E27 20W  
Anthracite/Opal

90cm tall



HL3778/OP  
**NOW: £155.00**  
Ø 90 ↓ 650 (mm)  
1 x E27 20W  
Anthracite/Opal

great ambient  
light



HL3777/OP  
**NOW: £133.00**  
Ø 90 ↓ 450 (mm)  
1 x E27 20W  
Anthracite/Opal

IP54

OUTDOOR



  
IP54

clear acrylic  
diffuser



HL3775/CL **NOW: £104.00**

↓ 200 ↔ 90 ⇨ 125 (mm)

1 x E27 20W

Anthracite/Clear



HL3776/CL **NOW: £155.00**

↓ 330 ↔ 90 ⇨ 125 (mm)

2 x E27 20W

Anthracite/Clear



↑  
can be  
← mounted in any →  
direction  
↓

**CHAMONIX**

Images are not to scale

be creative and use a decorative lamp

Range Characteristics:  
3 Colour Options  
Acrylic Cover-Metal Detail  
2 Years Warranty



HL3779/CL  
**NOW: £181.00**  
Ø 90 ↓ 900 (mm)  
1 x E27 20W  
Anthracite/Clear



HL3778/CL  
**NOW: £155.00**  
Ø 90 ↓ 650 (mm)  
1 x E27 20W  
Anthracite/Clear

aluminium ring



HL3777/CL  
**NOW: £133.00**  
Ø 90 ↓ 450 (mm)  
1 x E27 20W  
Anthracite/Clear

IP54

OUTDOOR



IP65

polycarbonate diffuser



HL3064 **NOW: £71.00**  
↓ 256 ↔ 86 → 88 (mm)  
1 x E27 40W  
Anthracite/Clear



robust metalwork

HL3060 **NOW: £119.00**  
Ø 160 ↓ 276 → 215 (mm)  
1 x E27 40W  
Anthracite/Clear

# PEUTEREY

This range emulates traditional Victorian lanterns, with their cylindrical clear acrylic shades which house the E27 lampholders, surrounded by anthracite coated aluminium framework. The dark colour finish is ideal for an IP65 rated outdoor collection ensuring durability against the elements while the clear components give a display casing view of the lamp used.

Range Characteristics:  
Clear PC Diffusers  
Heavy-Bodied Metalwork  
2 Years Warranty

  
IP65



polycarbonate  
cylindrical  
diffuser

HL3061 **NOW: £95.00**  
Ø 160 ↓ 220 (mm)  
1 x E27 40W  
Anthracite/Clear



50cm

HL3063 **NOW: £142.00**  
Ø 160 ↓ 500 (mm)  
1 x E27 40W  
Anthracite/Clear



HL3062 **NOW: £126.00**  
Ø 160 ↓ 350 (mm)  
1 x E27 40W  
Anthracite/Clear



**HL3115 NOW: £63.00**  
 ↓ 220 ↔ 120 ⇨ 120 (mm)  
 1 x E27 40W  
 Graphite Black/Clear



glass panels



IP54



**HL3117 NOW: £89.00**  
 ↓ 345 ↔ 120 ⇨ 245 (mm)  
 1 x E27 40W  
 Graphite Black/Clear

**HL3116 NOW: £102.00**  
 ↓ 382 ↔ 120 ⇨ 188 (mm)  
 1 x E27 40W  
 Graphite Black/Clear

# GREPON

This range provides a classic collection of outdoor lighting solutions. The three dimensional rectangular frames with glass panels on each side reflect an old-fashioned oil lantern which is most prominently featured on the downward wall lamp with its curved hanging arm. Enhance this classic collection with the lamp of your choice.

IP54

Range Characteristics:  
Chic Frame Design  
Subtle Graphite Finish  
2 Years Warranty

HL3118 **NOW: £86.00**  
↗ 120 ↘ 390-890 ↔ 120 (mm)  
1 x E27 40W  
Graphite Black/Clear



HL3120 **NOW: £98.00**  
↘ 780 ↔ 130 (mm)  
1 x E27 40W  
Graphite Black/Clear



simple design  
sophisticated style



HL3119 **NOW: £83.00**  
↘ 580 ↔ 130 (mm)  
1 x E27 40W  
Graphite Black/Clear



Range Characteristics:  
3000K Warm White  
Adjustable Head  
3 Years Warranty



**HL3184 NOW: £98.00**

↓ 76 ↔ 150 → 85 (mm)  
1 x Integral LED 10W, 720lm  
Graphite Black

adjustable heads



**HL3185 NOW: £141.00**

↗ 107 ↓ 380 ↔ 150 (mm)  
1 x Integral LED 10W, 720lm  
Graphite Black

IP54



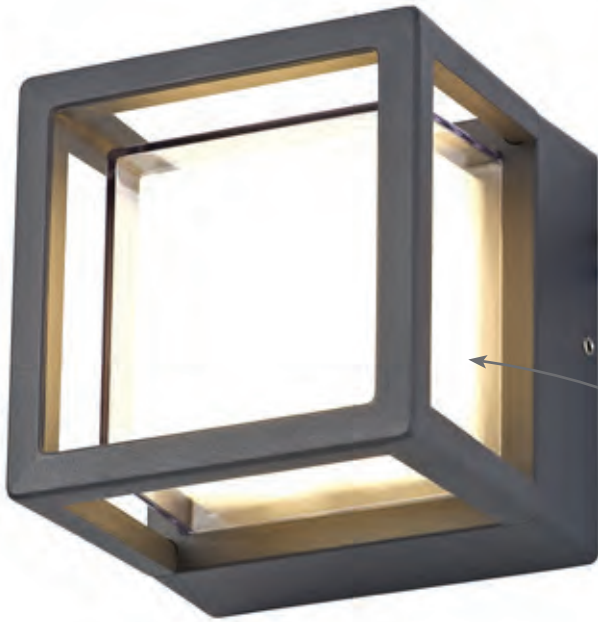
**HL3186 NOW: £171.00**

↗ 107 ↓ 780 ↔ 150 (mm)  
1 x Integral LED 10W, 720lm  
Graphite Black

FLEGERE

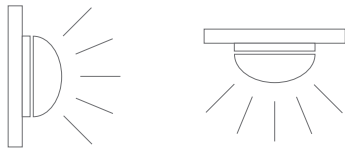
This IP54 rated collection harbours a high powered 10W 3000K LED section encased in a sturdy opal white acrylic diffuser. The LED head is fixed within a durable graphite frame, perfect for use in outdoor settings. The wall lamp available in this collection is adjustable in order to offer added directionality of light and the post lamps are come in either a short or tall version.

Range Characteristics:  
3000K Warm White  
Ceiling/Wall Mountable  
3 Years Warranty



**HL3209 NOW: £86.00**  
↗ 110 ↘ 103 ↔ 110 (mm)  
1 x Integral LED 6W, 350lm  
Anthracite/Opal White

double polycarbonate  
diffuser



suitable for wall  
or ceiling

IP54

robust metal construction

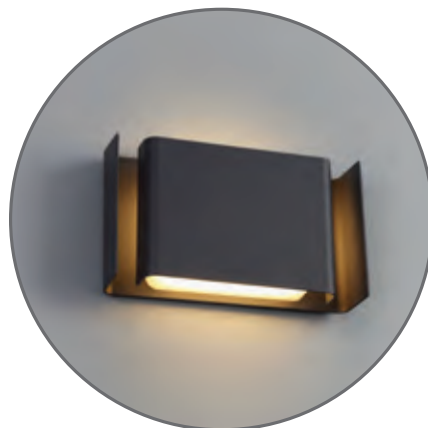


**HL3208 NOW: £86.00**  
Ø 108 ↔ 103 (mm)  
1 x Integral LED 6W, 350lm  
Anthracite/Opal White

## AILEFROIDE

A 3D optical effect is achieved with layers of contrasting materials built around the integral 3000K LEDs. This nesting concept shows an opal diffuser, within a clear casing, within an anthracite metal frame. Available in a round or square shape with an IP54 rating, this range proves you do not need to compromise on style when choosing an outdoor lighting solution.

Range Characteristics:  
3000K Warm White  
Not Dimmable  
3 Years Warranty



*superb ambience*



HL3785 **NOW: £84.00**

↓ 200 ↔ 120 ↗ 50 (mm)  
2 x Integral LED 12W, 535lm  
Anthracite/Clear

  
IP54

PELVOUX

Uniquely formed, this modern IP54 wall lamp uses a bracket type frame shape to establish an original display of illumination. The longer backplate is curved outwards from the wall and a smaller piece of the same design is then fixed in a reversed position over the diffuser box which houses the integral 3000K LEDs generating deep shadows.

Range Characteristics:  
3000K Warm White  
Polycarbonate Diffuser  
Die-cast Aluminium Base

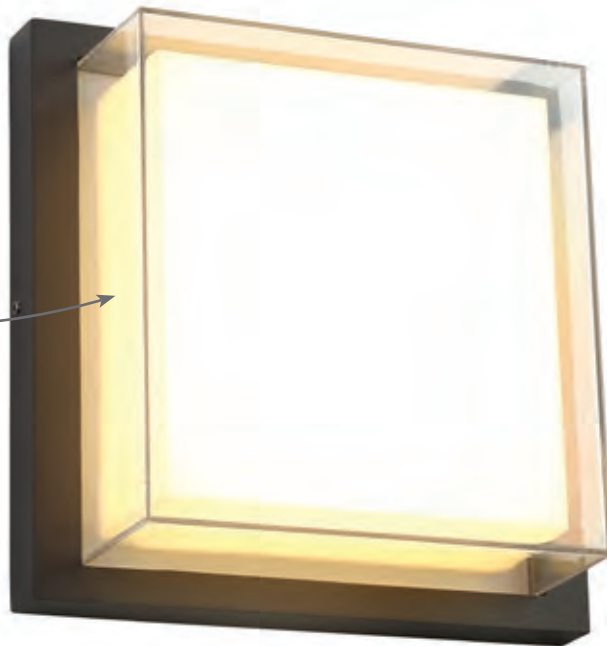



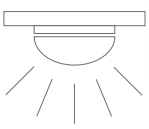
HL3783 **NOW: £93.00**  
↓ 220 ↔ 220 ↪ 85 (mm)  
2 x E27 20W  
Anthracite/Clear

double lamps

  
IP65

double diffuser



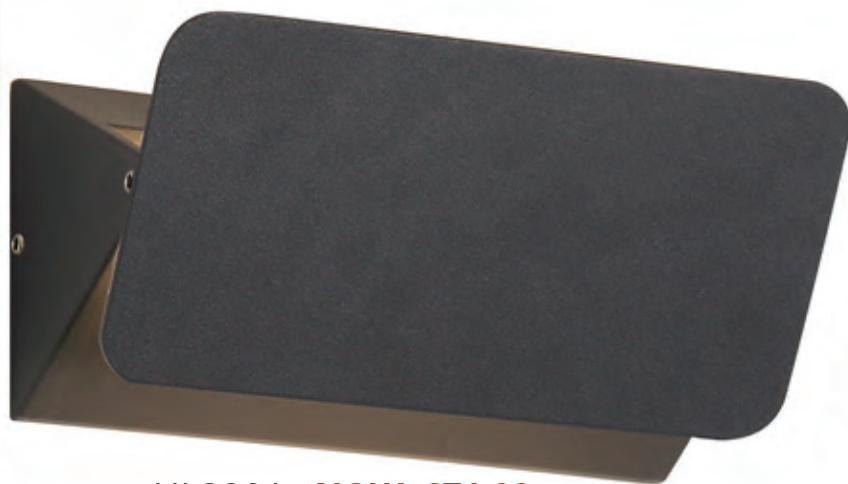
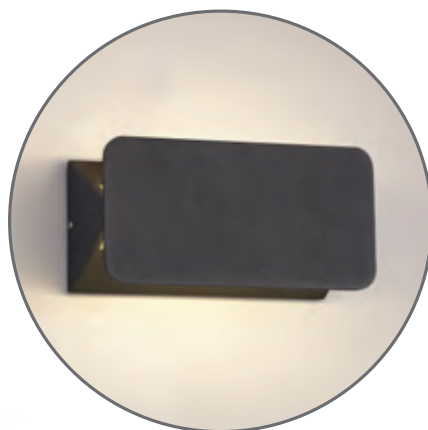
   
suitable for wall  
or ceiling

HL3784 **NOW: £125.00**  
↓ 220 ↔ 220 ↪ 85 (mm)  
1 x Integral LED 16W, 1135lm  
Anthracite/Clear/Opal

## LAVAREDDO

Offering an inventive wall light design the square form of the frame hosts a 3D clear casing reflective of a traditional museum display case. Both wall lamps are IP65 rated making them suitable for outdoor use, while one design holds the integral LEDs within an acrylic diffuser the other enables more flexibility with two E27 lampholders.

Range Characteristics:  
3000K Warm White  
Robust Construction  
3 Years Warranty



  
IP54

HL3201 **NOW: £71.00**  
↓ 80 ↔ 160 ⇨ 70 (mm)  
1 x Integral LED 5W, 190lm  
Anthracite/Frosted



↪ adjustable

HL3200 **NOW: £71.00**  
↓ 80 ↔ 160 ⇨ 70 (mm)  
1 x Integral LED 5W, 190lm  
Sand White/Frosted

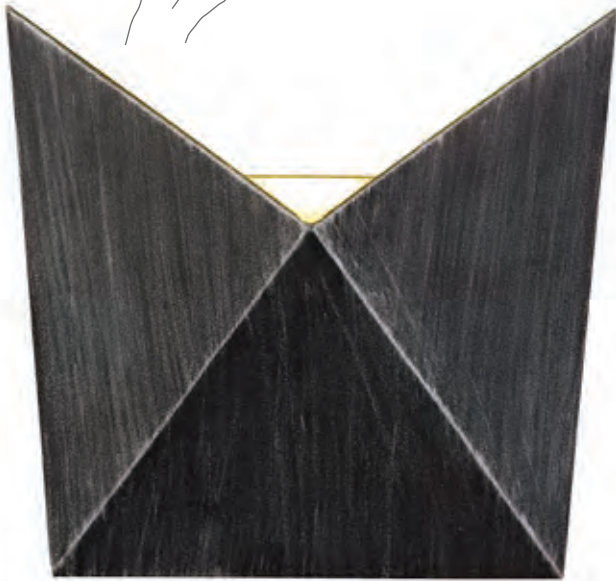
## MALINVERN

This range uses uniform shapes in a unique way to create a new mode of projecting light. A pyramid forms the backplate, positioning the integral LEDs along the two faces of the shape. The rectangular metal plate is then fixed at the front of the fitting to shelter the light dispersion and throw the illumination in opposite directions on either side of the wall lamp.



hand finished  
paintwork

Range Characteristics:  
3000K Warm White  
Robust Construction  
3 Years Warranty



**HL3203 NOW: £74.00**  
↓ 170 ↔ 170 ⇨ 80 (mm)  
1 x Integral LED 7W, 610lm  
Black/Silver/Clear



↑  
can be  
← mounted in any →  
direction  
↓

IP54



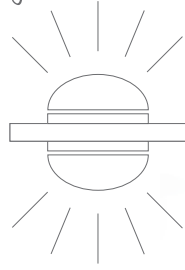
**HL3202 NOW: £74.00**  
↓ 170 ↔ 170 ⇨ 80 (mm)  
1 x Integral LED 7W, 610lm  
White/Gold/Clear

# CHAVALARD

The clean lines of triangular shapes envelope the integral LEDs driving the 3000K light into a 45 degree projection. This outdoor wall light, available in two colours, creates an aged worn impression by using a raw application of coating which produces a brushed chalk like effect offering a rustic urban quality to your outdoor area.

Range Characteristics:  
3000K Warm White  
Adjustable Beam Angle  
3 Years Warranty

bidirectional  
light source



  
IP54

HL3207

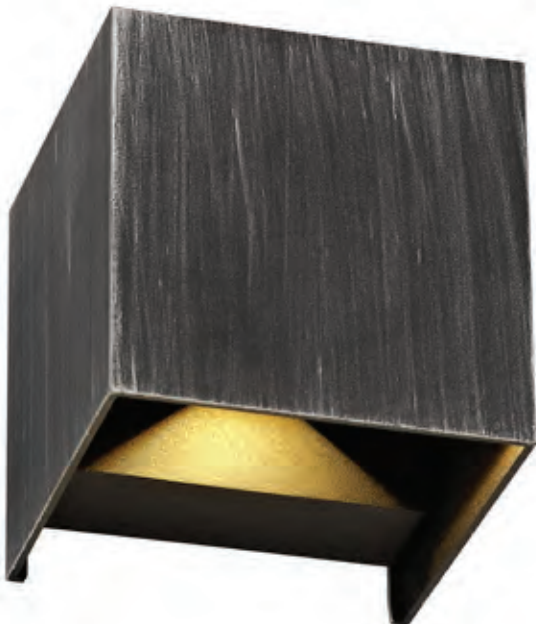
**NOW: £63.00**

↓ 100 ↔ 135 ↪ 120 (mm)  
2 x Integral LED 3W, 410lm  
Black/Gold/Clear



## COMBUL

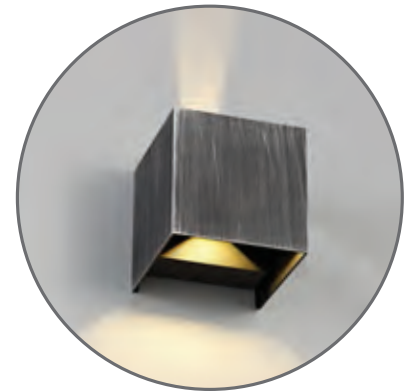
This outdoor wall lamp emulates a rustic atmosphere with the worn brushed effect of the black and gold colour finish. An up and downward directionality of 3000K LED light is achieved from the open faces of the cylindrical frame. Integrated barn doors enables complete independent flexibility of the beam angle for both directions of light. An IP54 rating makes this fixture suitable



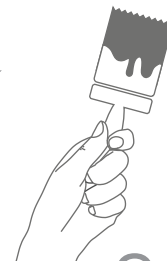
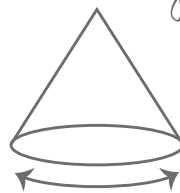
HL3210

**NOW: £63.00**

↓ 100 ↔ 100 ↪ 100 (mm)  
2 x Integral LED 3W, 400lm  
Black/Silver



adjustable  
beam angle



hand finished  
paintwork

## CARBONE

This outdoor wall lamp has a rustic feel with the worn brushed effect of the black and silver colour finish creating the illusion of a weathered fixture. A bi-directional light source is achieved from the open faces of the frame. Integrated barn doors enables a complete independent flexibility of the beam angle dispersed from both directions.

Range Characteristics:  
3000K Warm White  
Robust Construction  
3 Years Warranty



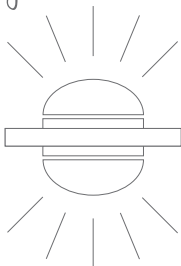
HL3205 **NOW: £93.00**

↓ 160 ↔ 230 ⇨ 56 (mm)  
2 x Integral LED 5W, 850lm  
Sand White/Frosted



  
IP54

bidirectional  
light source



substantial  
acrylic diffuser



HL3206 **NOW: £93.00**

↓ 16 ↔ 230 ⇨ 56 (mm)  
2 x Integral LED 5W, 850lm  
Anthracite/Frosted

## GRAUNOCK

This range combines primary shapes with LED technology to produce a futuristic modern collection of outdoor wall lamps. The rectangular panels of 3000K LEDs are vertically threaded through a horizontal band of metal framework. This creative concept is optically pleasing whilst still maintaining a reliable functionality desired of LED lighting products.



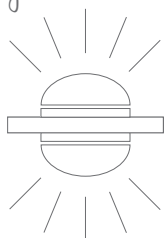
Range Characteristics:  
3000K Warm White  
Robust Construction  
3 Years Warranty



HL3204 **NOW: £83.00**

↓ 80 ↔ 170 ↪ 40 (mm)  
6 x Integral LED 1W, 500lm  
Black/Gold/Clear

bidirectional  
light source



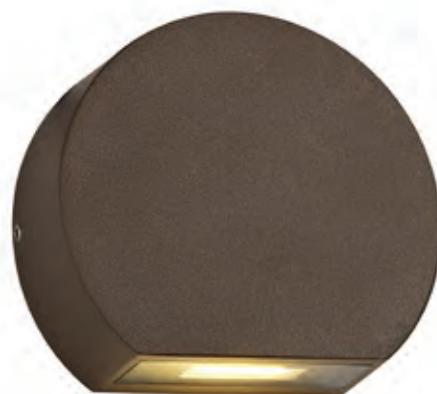
hand finished  
paintwork

## MADRISAHORN

The brushed black/gold colour finish gives a weathered, industrial quality to the sleek framework of this outdoor wall lamp. The slight projection of this fixture, from the surface to which it is applied, is a coveted aspect of an IP54 rated product ensuring an unobtrusive lighting solution either on pathways or even within a small bathroom.

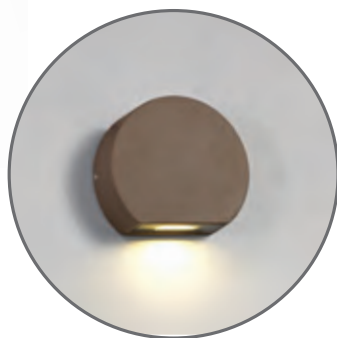
Range Characteristics:  
3000K Warm White  
Robust Construction  
3 Years Warranty

  
IP54



HL3229 **NOW: £54.00**

↓ 88 ↔ 99 ↪ 33 (mm)  
1 x Integral LED 3W, 270lm  
Dark Brown/Clear



## BIETSCHHORN

The dark brown colour finish of this lone wall lamp complements the natural tones commonly found in outdoor environments from gardens to pathways. This LED fixture offers a singular directionality of illumination which is ideal for highlighting a specific area or feature. The smooth circular form of the frame is slightly cut away at the edge to diffuse the integral 3000K LEDs.



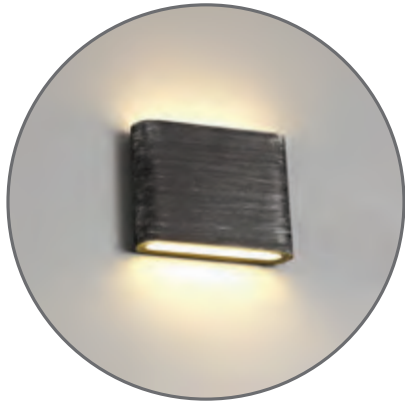
HL3215 **NOW: £50.00**

↑ 90 ↔ 115 ↦ 30 (mm)  
2 x Integral LED 3W, 350lm  
Black/Silver/Frosted



hand finished  
paintwork

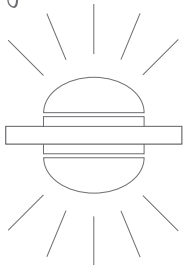
Range Characteristics:  
3000K Warm White  
Robust Construction  
3 Years Warranty



IP54

sleek & slim  
only 30mm deep

bidirectional  
light source



HL3218 **NOW: £69.00**

↑ 90 ↔ 175 ↦ 30 (mm)  
2 x Integral LED 6W, 630lm  
Black/Silver/Frosted

## ZELLINKOPF

This range harmoniously combines traditional weathered aspects with modern technology to create an interesting IP rated collection of wall lamps. The integral 3000K LEDs are diffused across the longest edge of the rounded rectangular frame. The LEDs modern presence is tempered by the rustic brushed black and silver colour finish.

Range Characteristics:  
3000K Warm White  
Robust Construction  
3 Years Warranty

HL3219 **NOW: £78.00**  
↓ 165 ↔ 153 ↪ 73 (mm)  
1 x Integral LED 6W, 700lm  
Sand White/Clear



  
IP54

↑  
can be  
← mounted in any →  
direction  
↓



HL3220 **NOW: £78.00**  
↓ 165 ↔ 153 ↪ 73 (mm)  
1 x Integral LED 6W, 700lm  
Anthracite/Clear



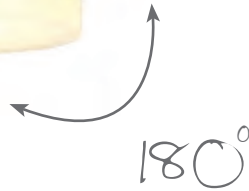
## BIONNASSAY

This collection takes a simplistic circular shape and manipulates its form to throw a more outward projection of 3000K LED light. The dipped curvature allows a wider angle beam often required of outdoor lighting. The two neutral colour options complement their unassuming design and can be mounted in any direction to suit the application requirements.

Range Characteristics:  
3000K Warm White  
Rotatable Head  
3 Years Warranty



HL3211 **NOW: £78.00**  
↓ 54 ↔ 110 → 100 (mm)  
1 x Integral LED 6W, 400lm  
Anthracite/Opal White



↑  
can be  
← mounted in any →  
direction  
↓



  
IP54



HL3212 **NOW: £105.00**  
↓ 54 ↔ 230 → 100 (mm)  
2 x Integral LED 6W, 780lm  
Anthracite/Opal White

## MAUDIT

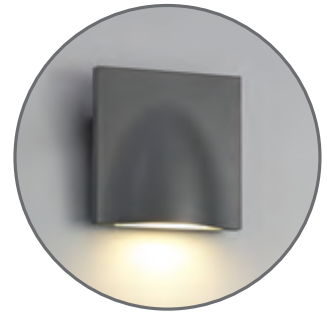
This is a highly versatile collection with an IP54 rating and adjustable heads. With a durable anthracite colour finish ideal for the outdoors, the wall lamps are available in a one and two light version each with integral 3000K LEDs. The LEDs are housed within a rounded rectangular shape that turns, giving added control over the directionality of light.

Range Characteristics:  
3000K Warm White  
Robust Construction  
3 Years Warranty

↑  
can be  
← mounted in →  
any direction  
↓



HL3228 **NOW: £60.00**  
↓ 120 ↔ 120 ↳ 45 (mm)  
1 x Integral LED 6W, 510lm  
Anthracite/Frosted



IP54

## CHAIERSTOCK

This wall lamp is the closest design available to best mimic the natural moulding of stone walls. The inconspicuous style only slightly projects from the wall enough to give a powerful singular direction of illumination from the integral 3000K LEDs. This subtle nature in an anthracite colour finish is perfect for outdoor use with an IP54 rating.

Range Characteristics:  
3000K Warm White  
Rotatable Head  
3 Years Warranty

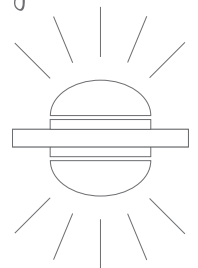


IP54



HL3227 **NOW: £81.00**  
↓ 120 ↔ 120 ↳ 130 (mm)  
2 x Integral LED 6W, 590lm  
Dark Brown/Opal White

bidirectional  
light source

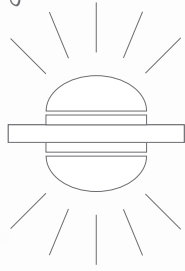


## DORMILLOUSE

This 12W wall lamp is IP54 rated with an intriguing structure. The integral LED head is shaped to mimic a classic lampshade with the light filtered through both the bottom and top of the shade throwing light in two directions. A dark brown colour finish reflects natural woodland elements allowing the wall lamp to more seamlessly settle into a garden setting.



bidirectional  
light source



Range Characteristics:  
Curved With Gold Detail  
Square With Silver Detail  
2 Years Warranty

HL3222

**NOW: £41.00**

↓ 160 ↔ 68 ↳ 78 (mm)  
2 x GU10 50W  
Black/Gold/Clear

↑  
can be

← mounted in →  
any direction



HL3221

**NOW: £32.00**

↓ 100 ↔ 68 ↳ 78 (mm)  
1 x GU10 50W  
Black/Gold/Clear



hand finished  
paintwork



HL3224

**NOW: £41.00**

↓ 160 ↔ 68 ↳ 78 (mm)  
2 x GU10 50W  
Black/Silver/Clear



IP54



HL3223

**NOW: £32.00**

↓ 100 ↔ 68 ↳ 78 (mm)  
1 x GU10 50W  
Black/Silver/Clear

# MONVISO

These outdoor IP54 rated wall lamps emulate a rustic urban atmosphere with their weathered colour finishes. The curved wall lamps use a black base with brushed flecks of gold whilst the rectangular version uses strokes of black and silver. This effect diminishes any impact from outdoor elements ensuring a reliable longevity of use even in harsher weather.

CONTEMPORARY  
 ILLUMINATION  
 ADJUSTABLE  
 SHADES  
 TIFFANY  
 MODERN  
 INDUSTRIAL  
 LANTERN  
 WALL LIGHTS  
 QUIRKY  
 COLOUR CHANGING  
 ACCENT  
 GLASS  
 INNOVATIVE  
 PAINTABLE  
 LIGHTING  
 REFLECTIVE  
 PAL  
 STUNNING  
 HAND CRAFTED  
 NON ELECTRIC  
 LED  
 RECESSED WALL LIGHT  
 LUMINAIRE  
 EXCLUSIVE  
 KITCHEN  
 DRIVE OVER  
 PENDANT  
 DECORATIVE  
 BATHROOM  
 VICTORIAN  
 OUTDOOR  
 CRYSTAL  
 DOUBLE  
 INSPIRED  
 INSULATED  
 FILAMENT  
 BIDIRECTIONAL  
 UNIQUE

Harborough Lights  
 13, Manor Walk, Market Harborough, LE16 9BP  
 Tel: 01858 467716  
[www.harboroughlights.co.uk](http://www.harboroughlights.co.uk) - [dal63@hotmail.co.uk](mailto:dal63@hotmail.co.uk)