

SOLIDSVAC

SOLIDS PUMPING SYSTEMS



Solidsvac Pumps SV-Float Switch Operations Manual



201 First Avenue - Bribie Island - QLD 4507 - Australia

+61 456 000 665 / info@solidsvac.com / www.solidsvac.com

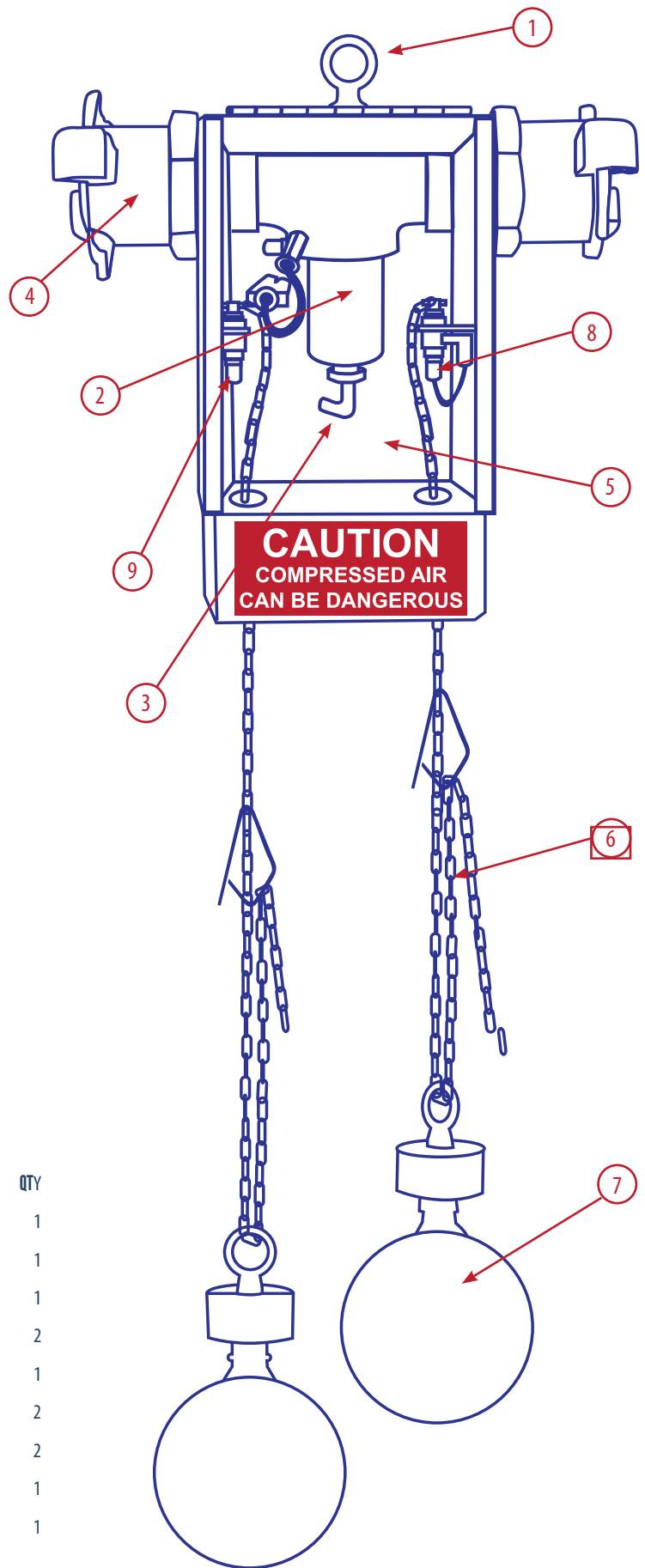


“SAFETY FIRST”

**BEFORE PUMP OPERATION
CHECK THE FOLLOWING**

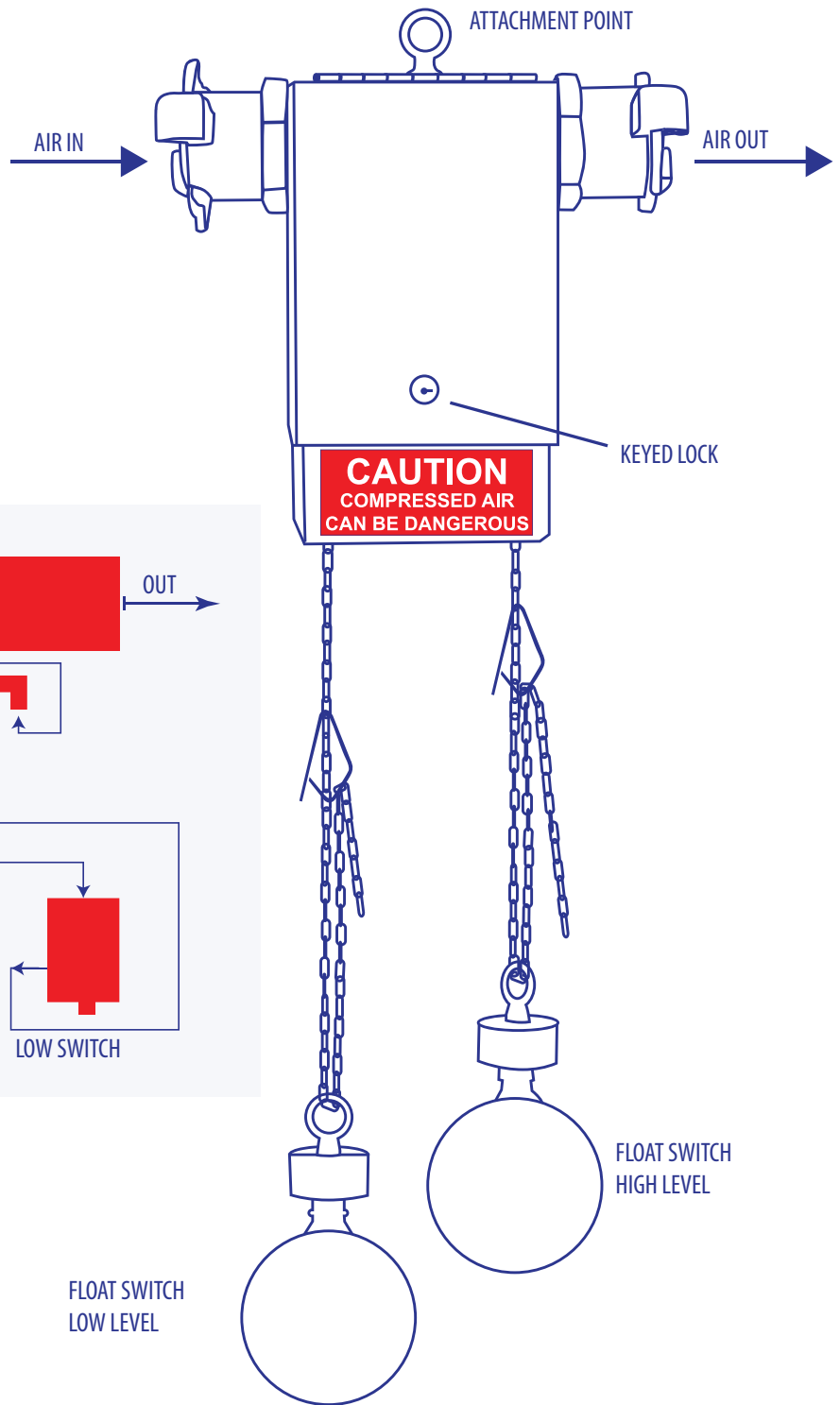
**Safety clips are fitted
All chain is above ball height**

**REPORT ANY DEFECTS
IMMEDIATELY**

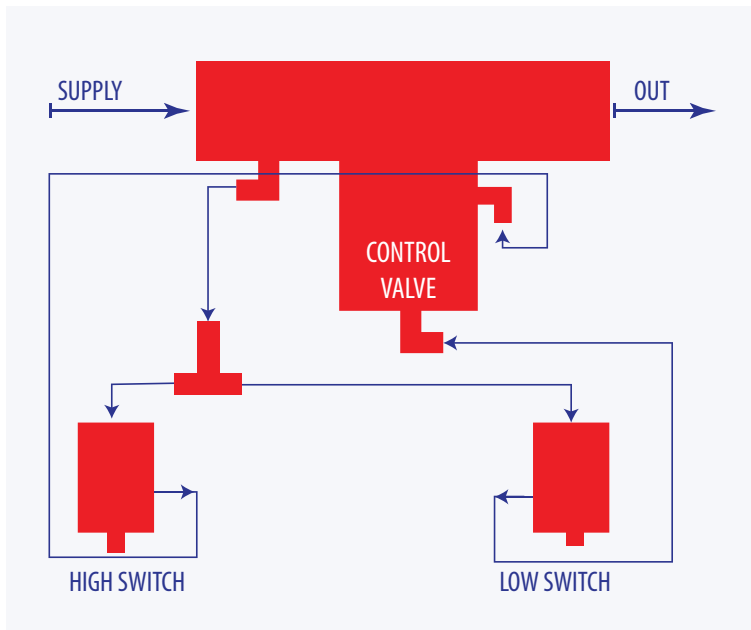


Solidsvac Float Switch Parts

ITEM	DESCRIPTION	QTY
1	Lifting Eye	1
2	Valve Repair Kit	1
3	Fittings Kit	1
4	Minsup 25mm (1") or 50mm (2")	2
5	Cabinet	1
6	Chain 1200mm	2
7	Float Assembly	2
8	Low Switch	1
9	High Switch	1



Schematic



WARNING

Compressed air can be dangerous. Correctly rated hoses and piping should be used in conjunction with the appropriate fittings and safety devices on all connections.

The unit is not designed to operate above 785kPa (114psi).

Model Number

Serial Number

Date of Manufacture

Inspected by



201 First Avenue - Bribie Island - QLD 4507 - Australia

+61 456 000 665 | info@solidsvac.com

www.solidsvac.com