

# SOLIDSVAC

SOLIDS PUMPING SYSTEMS



## Solidsvac Pumps SV-Float Switch Manual



201 First Avenue - Bribie Island - QLD 4507 - Australia

+61 456 000 665 / [info@solidsvac.com](mailto:info@solidsvac.com) / [www.solidsvac.com](http://www.solidsvac.com)

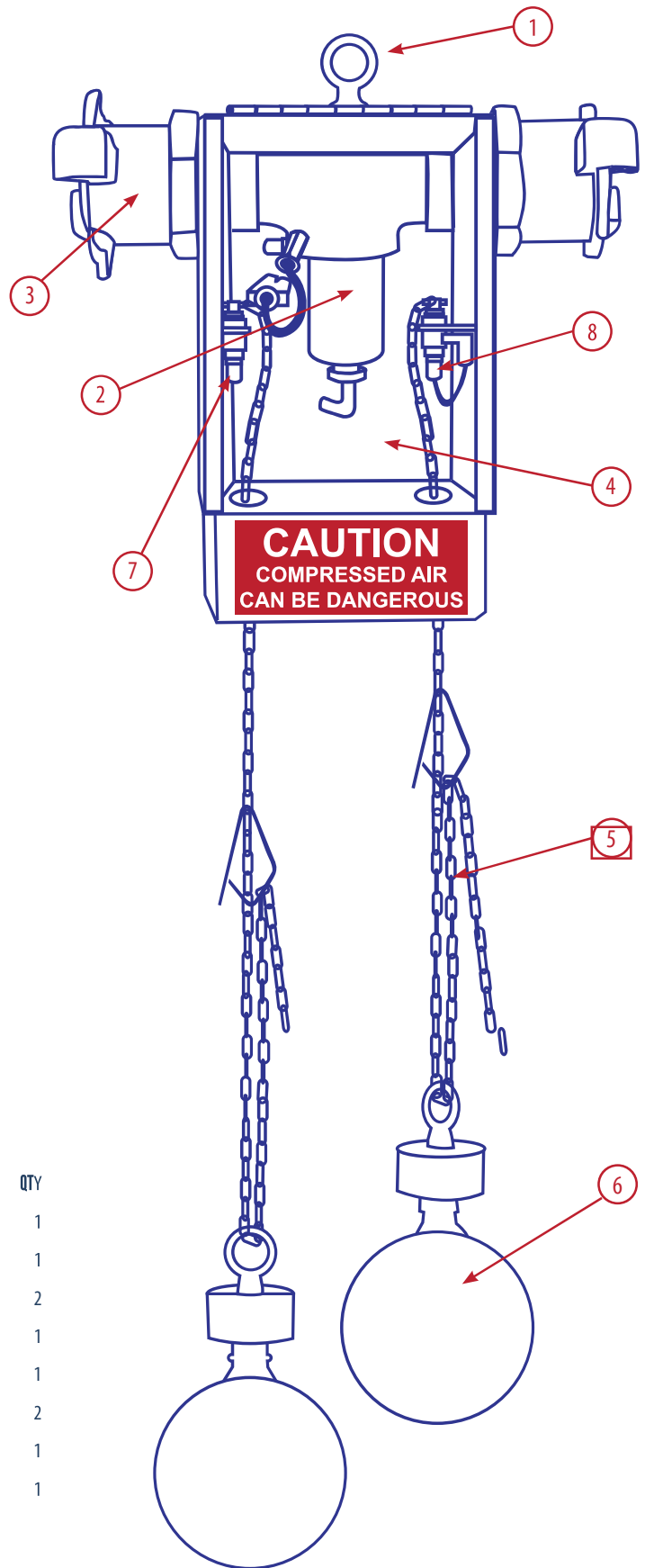


## “SAFETY FIRST”

**BEFORE PUMP OPERATION  
CHECK THE FOLLOWING**

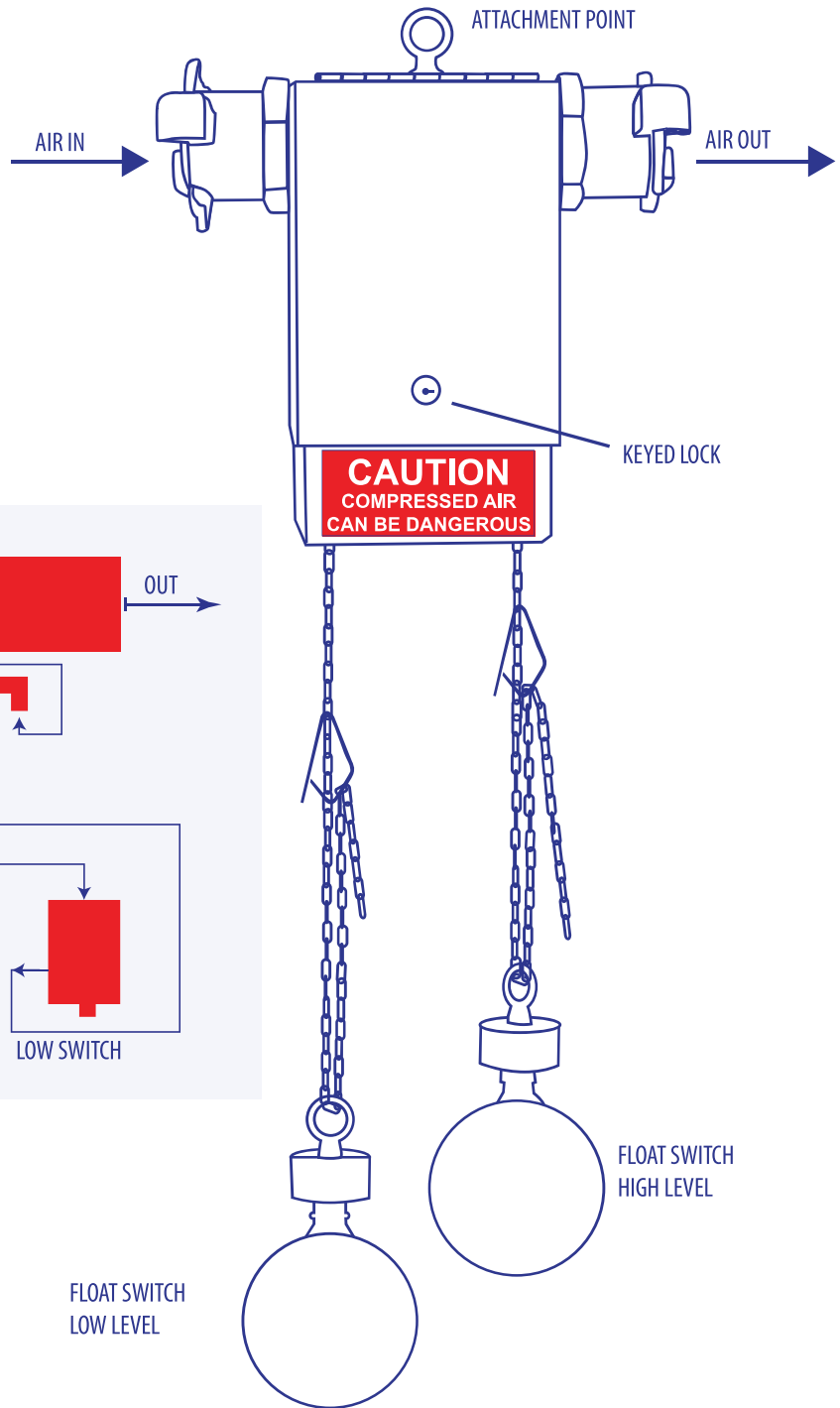
**Safety clips are fitted  
All chain is above ball height**

**REPORT ANY DEFECTS  
IMMEDIATELY**

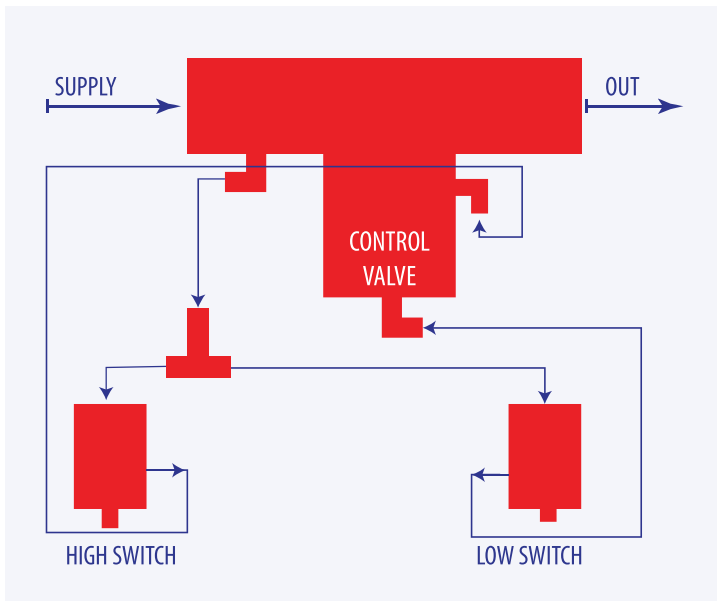


### Solidsvac Float Switch Parts

ITEM	DESCRIPTION	QTY
1	Lifting Eye	1
2	Control Valve	1
3	Minsup 25mm (1") or 50mm (2")	2
4	Cabinet	1
5	Chain 1200mm	1
6	Float Assembly	2
7	Low Switch	1
8	High Switch	1



**Schematic**



**WARNING**

Compressed air can be dangerous. Correctly rated hoses and piping should be used in conjunction with the appropriate fittings and safety devices on all connections.

The unit is not designed to operate above 785kPa (114psi).

Model Number

Serial Number

Date of Manufacture

Inspected by



201 First Avenue - Bribie Island - QLD 4507 - Australia

+61 456 000 665 | [info@solidsvac.com](mailto:info@solidsvac.com)

[www.solidsvac.com](http://www.solidsvac.com)