

WEAVE-IN

2026

January 30 – February 1

HELD AT EMBASSY SUITES

GREENVILLE, SC

SPONSORED BY |

THE UPPER SC BASKETMAKERS GUILD



FRIDAY



F-AM-1 8 – 5 PM
Pagoda
Mary Price
7"H
\$60 Intermediate

This lidded Pagoda basket features a 5" woven Cathead base. The basket and lid are accented with grey reed, flat silver wire, and 2 silver hoops serving as handles on the basket. The sides are woven in traditional start stop rows with a special emphasis on shaping to achieve the unique Cathead shape. After finishing with a traditional lashed rim, a round reed woven ledge is added. The lid is woven using Triple Twine and 4 Rod Wale to suit the size of your basket.



F-AM-3 8 – 5 PM
Nantucket French Bread Basket
Candy Barnes
3 3/4"H x 20 3/4"L x 6"W
\$110 Intermediate

Students will insert staves into a cherry wood base and will weave over a class mold with cane. Students will have options of patterns and color accents. A custom Cherry rim will be glued on. Teacher will supply all tools.



F-AM-2 8 – 5 PM
Diamondback
Pam Milat
12.5"H w/handle x 17"L x 7"W
\$80 All Levels

This eye-catching design begins with a woven filled base over a hand hewed oak handle. Students will use the over/under weave and twining to complete the sides of their basket and finish with a seagrass rim. After inserting the hand carved oak feet, they will add the diamond embellishment with cane. Color: Black/rust.



F-AM-4 8 – 5 PM
Victorian Hearth
Bridget VanRemortel
7"H x 12"H w/handle x 14"L x 8"W
\$65 Intermediate

This is a different take on a hearth basket that includes a 3 rod wale rim. It has stacked rows, three rod wale, twining, and overlays too.

FRIDAY



F-AM-5 8 – 5 PM (See Note)
Trivet
Pam Philpott
7" Diameter
\$65 Intermediate

Weavers must have experience in maintaining a consistent coil with pine needles. The objective will be to learn new stitches and wrapping a coil. Participants will use natural Long Leaf pine needles and waxed Jupean thread to create a trivet. The base is a predrilled cork coaster. Weavers will have the options of thread color and beads to personalize and complete the trivet. A limited number of additional image options may be available (lighthouse, mermaid, monarch, wine glasses, rooster etc.) This is a difficult project, and most will not finish within the 8 hours. However, weavers should be confident with the instructions to complete individually.

Special Tools: small sharp snips, awl, and small needle nose jewelry pliers

Note: Additional time will be available in the evening to complete the trivet



F-AM-6 8 - 5 PM
Well Spring Wonder
Peggy Adelman
6 ½"H x 11" Diameter at top
\$60 Intermediate

This basket is woven in a 2x2 twill pattern throughout. The stakes as well as the weavers are natural and dyed 1/4" flat reed. The basket flairs out as it goes up. The base is square but the basket is round. To go from square to round is what helps the base arch up. The rim is a simple braided border



F-AM-7 8 - 5 PM
Bonnet Basket
Judy Wobbleton
11 ½"H x 11" Diameter
\$85 Intermediate

This traditional design was used originally to store your Sunday bonnet. Today it is the perfect place to store your treasured items. This basket begins with a slotted wooden round base. Emphasis will be on maintaining the round shape then creating a round top to fit.

FRIDAY



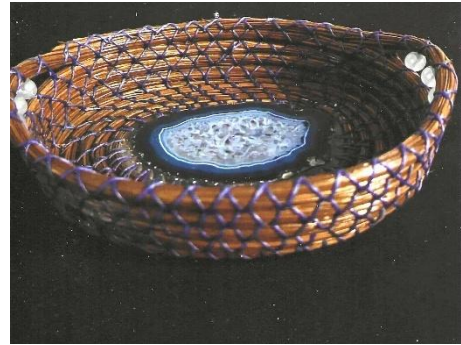
F-AM-8 8 - 5 PM
Oval Sweetgrass Basket w/Side Handles
Barbara McCormick
Size Varies
\$95 All Levels

This basket is designed for all levels and will allow you to put your imagination to use. Sweetgrass baskets are coiled with Southern long-leaf pine needles and lashed with strips of palmetto. Techniques taught will enable students to design a variety of shapes and sizes of Sweetgrass baskets. This is an art form stemming from West Africa over 300 years ago. No water required. Scissors only.



F-AM-9 8 - 5 PM
Appalachian Grab and Go
Jane McCall Brinkman
9"H x 14"H w/handle x 15"l x 6"W
\$65 Intermediate

The structure of this basket is woven with reed dyed to look like Smoked reed OR Smoked Reed (if smoked reed is good quality). There will be several color choices at class time for the dyed reed weavers and overlays. It has a filled woven base. Shaping and how to handle dyed reed will be emphasized, as well as attaching leather handles. This handy tote is a good size to just "Grab and Go" on a busy day! Beginner student may need to complete overlays on their own. 2 towels will be helpful.



F-AM-10 8 - 5 PM
Geode Basket
Lori McCoy
1 ½"H x 2" H w/handle x 6 ¾ L x 5 ½" W
\$60 Beginner/Intermediate

Students will start with geode that's set in resin. The base rows are completed using the V stitch. (aka wheat) The sides will be using the diamond stitch. They will also use beads at each end on the 4th row.



F-AM-11 9 - 4 PM
Black Ash Teleidoscope
JoAnn Kelly Catsos
8"L x 1 ½" Diameter
\$80 Intermediate

This unique project begins with a teleidoscope (like a kaleidoscope but with no moving parts). Using basketmaking techniques, students will weave with precisely prepared black ash splint. Math and twill possibilities will be discussed. Darker heartwood stakes and lighter sapwood weavers help create each original teleidoscope. Student toolbox is provided.

FRIDAY



F-AM-12 9 - 4 PM
TrivetMadness
Susan Baxter
1/4"H x 8, 9 or 11" Diameter
\$70 All Levels

TrivetMadness encompasses both TrivetFun1.0 and TrivetFun2.0. Weavers will select a simple trac border or an intriguing Chira border when working the TrivetFun1.0. They will use a TrivetFun jig for spoke placement, twining and 3-rod wale to complete the body and then create their selected border. Once the TrivetFun1.0 is complete, TrivetFun2.0 will be started using some of the same techniques. However, color, spoke insertion, ridge weave and a more challenging trac border will be new elements related to the second project. The TrivetFun jig is included in the price of the class so weavers can keep creating long after the class is done.



F-AM-13 9 - 4 PM
Spirals Around the Cathead OR Blue Trail
Cathead
Pati English
6 1/2"H x 11"L w/handle x 10"W x 9" Dia.
\$89 Intermediate

Select one Cathead, a square woven base is the start to these colorful Catheads in aqua and royal (other color choices available). Over/Under, Start/Stop Weave in flat oval reed, dyed round reed in the Outside Spirals with Triple Three-Rod Wale, and vertical Overlays with a woven round reed "medallion" as the focal point. OR Twill weave in the center with dyed overlays forming one Spiral trail around the cathead. Emphasis on color placement, attention to detail, hand and finger placement to create a cathead from base to rim. Finish with Pati's Cable Stitch Lashing and Twill Handle Wrap or dyed Diagonal Handle Wrap.



FRIDAY



F-AM-14 9 - 4 PM
Orange Carat
Karen Maugans
16"L x 12"W x13"H w/handles
\$65 All Levels

Designed on a 7" Williamsburg handle, start and stop weaving, dyed Sunshine Orange, cane smocking creating diamond over center wide strip, braided border, and finish off with decorative orange pips.



F-AM-15 9 - 4 PM
Smoked Flower Pot
Becki M. Newsome
11"H x 10"Diameter
\$50 All Levels

This basket is woven over a planter mold that remains in the basket. The mold has attached wooden base. Basket is woven with smoked reed as well as natural reed. Sides are woven in a twill pattern and the rim is done in a matchbook pattern.

FRIDAY EVENING



F-PM-1 6 - 10 PM
Squatty
Karen Maugans
12"W x 10"H
\$50 All Levels

Oh so very handy – use in your living room for books/magazines/comfy throw. Kind of neat with splayed feet. Color choices: Black w/black leather handles or Smoked w/brown leather handles.



F-PM-2 6 - 10 PM
Small Carrier
Peggy McCarson
10"H x 14"H w/"handle x 10"L x 5"W
\$45 Beginner

Woven with a swing D handle, the basket starts off as square but moves to oval as you weave up the sides. Colorful dyed reed is accented with a cross stitch weave. The filled in base is a little unusual but adds strength to the base.



F-PM-3 6 - 10 PM
Fall Back
Jamie VanOekel
4"H w/handle x 7"L x 5"W
\$25 Beginner

Use overlays, wrapped handles and double lashing to create a fun basket perfect for gift giving. A second color choice (Spring Forward) will also be offered at class time.



F-PM-4 6 - 10 PM
Shaker Kittenhead
JoAnn Kelly Catsos
2 3/4"H w/"handles x 2 3/4" Diameter
\$69 Beginner/Intermediate

This small cathead basket is the quintessential Shaker basket. It is chase-woven of finely prepared black ash splint over a wooden mold, like the original created over 100 years ago. To ensure completion during class, the basket is pinned on the mold and ready to be woven. The lashed rims and hardwood handle complete this little treasure. Due to the size, patience is required. Student toolbox is provided.

FRIDAY EVENING



F-PM-5 6 - 10 PM
Vanilla Bean Bottle
Jane McCall Brinkman
4"H x 8" w/handles x 2 1/2" Diameter
\$39 All Levels

Two Swing Top Glass Bottles will be woven in this class. A wood base will be attached to the bottle base, and it will be woven in a simple Chase Weave using Standard Cane and Dyed Reed. Dyed reed color choices are Cranberry Red, Burgandy, and Amethyst. Vanilla beans and a Home Made Vanilla recipe will be included. These make great gifts for family and friends!



F-PM-6 6 - 10 PM
Marbled Catchall
Becki M Newsome
9"H x 10" Diameter
\$50 Intermediate

Woven on a wooden, slotted base. Standard over/under weaving, triple twine. Student will have choice of marbled strip. Round shaping of basket will be stressed.

SATURDAY



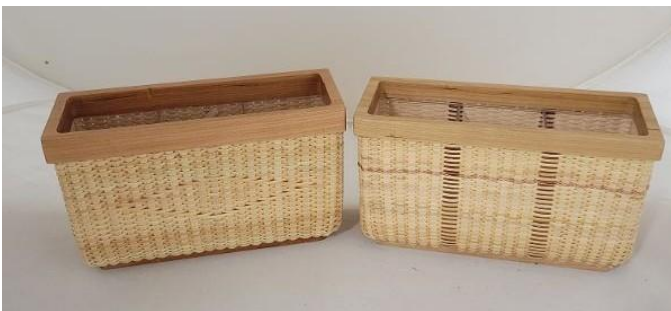
S-AM-1 8 - 5 PM
Jen P's Purse
Peggy Adelman
8 1/2"H x 10"L x 5"W
\$70 Intermediate

This tote starts with a 9" x 4 1/2' race track wooden base with 48 holes. The round reed stakes are set into the holes in the base. There is triple twining as well as arrow weave in this basket. There are also 1/4" flat reed rows. The rim is a fun simple braid. The 20" braided leather handles are set into the body of the basket just below the rim. Shaping will be stressed.



S-AM-3 8 - 5 PM
The Berkeley Basket
Cheryl Thomas
11 1/2"H x 15"L x 11"W
\$75 Intermediate

This basket is woven on a walnut base and utilizes triple and paired triple twining. The lower section is woven with a start and stop twill. Gimp braid and leather handles complete the basket.



S-AM-2 8 - 5 PM
Nantucket Desk Organizer (3 slots)
Candy Barnes
5"H x 8 1/4"L x 3"W
\$75 Intermediate

Students will insert staves into a cherry wood base and will weave over an acrylic 3 slot holder that can hold pencils, pens, utensils or brushes. A custom wood rim will be glued on. Students will have a choice of being creative with color and patterns. Teacher will provide all tools.



S-AM-4 8 - 5 PM
Salute
Jamie VanOekel
11"H w/handle x 10" Diameter
\$55 Intermediate

Shaping while weaving around Williamsburg handle is the focus in weaving this patriotic themed basket. The accent band includes the techniques of 3-rod wale and lattice work design.

SATURDAY



S-AM-5 8 - 5 PM
Harmony
Judy Wobbleton
17"H w/handle x 14"L x 10 1/2"W
\$85 Beginner/Intermediate

Basket is started on a rectangular wooden base with knob feet. Techniques include chase weaving, twining and traditional weaving. Students will be challenged in creating a fullness in the body of the basket and then reducing the size to accommodate the oak handle.



S-AM-7 8 - 5 PM
New Wave Tote
Mary Price
8"H x 12"L x 7"W
\$80 Intermediate

This sturdy, functional slim tote starts with natural flat reed spokes inserted into a racetrack base. Techniques include triple twine with a step up, basic over under weave and a fun wave weave design. The basket is completed with a traditional lashed rim and beautiful grey leather handles.



S-AM-6 8 - 3 PM
Berkshire Pack Basket
JoAnn Kelly Catsos
4"H w/handle x 2 3/4"L x 2 3/4"Diameter
\$90 Intermediate

Named for the Berkshire mountains near where I used to live, this miniature pack basket has all the features of a full size pack – lashed rims, leather harness and skeds on the base. It is chase woven of finely prepared black ash splint over a puzzle mold that must be taken apart to be removed after the basket is woven. Due to its small size (it fits business cards) prior black ash splint experience is helpful. Student toolbox is provided.



S-AM-8 8 - 5 PM
Tar-Wheels
Pam Milat
6 1/2"H w/handle x 11"L x 5 1/2"W
\$62 Intermediate

Whether it is holding rolls, chips, or remotes for gametime, this rectangle basket is sure to be a crowd pleaser. Students will weave the side of the basket with dyed and natural reed using the over/under technique on a woven filled base. Then prior to rimming, insert push-in handles on each end. Color choices: Lt Blue, Red, or Dk Blue.

Saturday



S-AM-9 8 - 5 PM
Round Sweetgrass Basket
w/Twisted Rim or Pine Knots
Sizes Vary
Barbara McCormick
\$95 All Levels

This basket is designed for all levels and will allow you to put your imagination to use. Sweetgrass baskets are coiled with Southern long-leaf pine needles and lashed with strips of palmetto. Techniques taught will enable students to design a variety of shapes and sizes of Sweetgrass baskets. This is an art form stemming from West Africa over 300 years ago. No water required. Scissors only.



S-AM-10 8 - 5 PM
Small Vase (beach or flower)
Lori McCoy
4 1/2"H beach 4"H flower x 3 3/4" beach 3 1/2 flower Dia
\$60 Beginner/Intermediate

The vases both have the same number of rows. The smaller one has a wider section, the taller one goes straight up. The base is started with a wrapped coil. The stitch used throughout the piece is the simple stitch. There will be a couple of rows in the middle using a contrasting color pine needle as well as the last few rows at the top. The top is flared out. The student will use raffia, beads, shells, wooden flowers and leaves to finish the piece. A glass insert will also be included.



S-AM-11 8 - 12 PM
Copper Wire Weave Pendant
Judy Lindsey
\$65 Beginner/Intermediate

They will be using 20-gauge wires round and square; they will be using a 21-gauge half round, and they will be weaving with a 28-gauge wire. They will have a cabochon, and they can choose from various kinds of stones. They will learn how to measure the circumference of an oval stone. Build a weave around the cabochon. The tools the students will be using are rulers, calipers, needle nose pliers, and flush cutters.

All materials and tools will be furnished by the instructor. If students have their own tools and would like to use them that is fine.



S-AM-12 8 - 3 PM
T-Shirt Basket
Kim Maugans
10"H x 12" Diameter
\$55 All Levels

Guess you're wondering how it got its name. You know those plastic bags that they so generously give you when grocery shopping – they are called t-shirt bags. This basket is designed with special handles so that you can easily line your basket. Techniques include inserting spokes into wooden base, twining, stop and start weaving, accented with rows of dyed reed. Finished off with specially designed handle.

SATURDAY



S-AM-13 8 - 5 PM
Aurora
Susan Baxter
3.3"H x 8.25" Diameter
\$75 Beginner/Intermediate

Aurora begins with an overlaid double cross base that is started on a 3D printed jig so weavers are weaving and not chasing spokes. Once the spokes are secured, the jig is removed and a Japanese weave is used to separate the spokes. 4-rod wale is used for the stacked sunrise design on the bottom and continues up the sides after the side spokes are added. Additional spokes are inserted to create an Arched Gretchen border which allows for handholds to be embedded within the border. The overlaid double cross jig is included in the price of the class.



S-AM-14 8 - 3 PM
Diamonds in a Row
Pati English
6 1/2"H x 11"H/handle x 10"L x 8"W
\$89 Intermediate

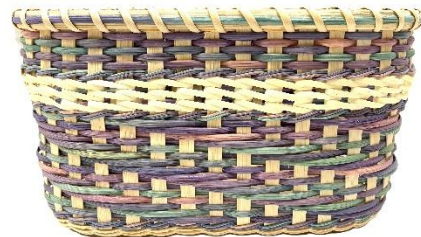
With a 5"x8" racetrack base, weave Over/Under, Start/Stop in natural flat oval reed then dyed round reed in Triple Three-Rod Wale creating a rope-like texture as a border, followed by Four-Rod Wale for more color. Create rows of Diamonds all around as the focal point of this pretty yet practical basket. Finish with 3~2 Lashing technique and a fine leather handle stitched near the rim with waxed linen or choice of 8" round top open notch handle with handle wrap.



S-AM-15 8 - 3 PM
Oyster Shell Trinket Basket
Pamela Philpott
6"L x 4"W x 2"H
\$60 All Levels

Weavers will be supplied with a predrilled oyster shell, natural needles and thread to complete the project. Beginners will learn the technique of maintaining a consistent coil and tight stitches to ensure the bowl takes form. Individual creativity will be encouraged to make the bowl unique by changing the format of the coils. Wrapping, adding stitches, and beading will be used to create interest in the free form designs. This project is truly unique in that no two bowls turn out the same.

Special Tools: small sharp snips and possibly small needle nose jewelry pliers to assist with gripping sewing needles.



S-AM-16 8 - 5 PM
Springtime
Peggy McCarson
6.5"H x 12"L x 5"W
\$63 Intermediate

Insert spokes into a prepared wood base. Twine spokes close to base. There are three sections – Fibonacci twill, wrapping spokes with cane, start-stop weaving – separated with double weaver twining. The light colors of the spaced dyed Morning Glory (seaglass, quartz, lavender) create a light and peaceful basket.

Saturday Afternoon



S-PM-1 1 - 5 PM
Copper Wire Weave Bracelet
Judy Lindsey
\$65 Beginner/Intermediate

You will learn about different tools and types of wire. Learn how to make a clasp to fasten your bracelet. The goal is for every student to finish their bracelet. The teacher will provide a tutorial along with necessary supplies so you can finish your bracelet if you don't finish in class.

All materials and tools will be furnished by the instructor. If students have their own tools and would like to use them that is fine

SUNDAY



SU-AM-1 8 - 2 PM
Autumn Tease
Karen Maugans
4.5"H w/handle x 11"Diameter
\$65 All Levels

You will start by inserting spokes into a grooved base, twining, triple twining (including seagrass), start and stop weaving, leather straps. Being that it is a 'tease', basket will incorporate fallish colors.



SU-AM-3 8 - 2 PM
Aurelia
Susan Baxter
3.3"H x 8.25"Diameter
\$65 Beginner/Intermediate

Aurelia combines a slotted bloom base with round reed to create a truly unique basket. We cover spoke insertion, twining, 3-rod wale, and a combination of waling and continuous weave that presents nicely on both the inside and outside of the basket. The basket is finished off with the traditional English border "three rod/behind one" with 2 follow-on tracs of over two and down.



SU-AM-2 8 - 2 PM
Pie Basket
Bridget VanRemortel
4"H x 8"H w/handle x 12" Diameter
\$70 Intermediate

This basket has rolled leather handles, dyed seagrass, triple twine, a wooden base and a pretty woven stitch to add to your embellishment.



SU-AM-4 8 - 2 PM
10 Mile Wall Pouch
Jamie VanOekel
10"H w/handle x 6"W
\$35 Beginner

This pretty basket can be handy as well as decorative. The use of continuous weave creates an accent swirl that travels around the basket. Wrap the handle in place and double lash the rim.

SUNDAY



SU-AM-5 8 - 2 PM
Which Way to Williamsburg
Pati English

7"H x 12"H w/handle x 7"W x 12" Diameter
\$89 All Levels

Learn to shape a square base into a large round rim opening. Start with a woven filled-in base with pairs of filler spokes, 1/2" spokes, and a 7"x11" oak Williamsburg Handle. Techniques include: Over/Under, Start/Stop Weave, dyed royal Twill weave in the center with dyed overlays forming one Spiral trail around the cathead Vertical Overlays in varying lengths creating visual focal points, with color choices offered. Triple Three-Rod Wale below the rim, Cable Stitch Rim Lashing, and finish with a Chevron Arrow Handle Wrap.



SU-AM-6 8 - 2 PM
Treasure Trash Pop!
Peggy McCarson
"7"H x 11L

\$65 Beginner/Intermediate

Spokes are inserted into a racetrack base according to a chart that allows weavers to form a "lines and crosses" pattern. Hints given to help shape the basket straight up. The colors are continued in the handle and the round reed filler. If aqua and coral is too POP for you, contact Peggy at mccarsonp@gmail.com for alternative colors of mauve and sage or navy and aqua.



SU-AM-7 8 - 2 PM
Nantucket Cherry Candy/Jewelry Basket
Candy Barnes
3"H x 5 1/2"W
\$75 Beginner/Intermediate

Students will insert staves into a cherry wood base and will weave over a class mold. Students will have options of color accents and patterns. A custom cherry rim will be glued on. A wood lid and knob are included. Teacher will provide all tools.



SU-AM-8 8 - 2 PM
Beaded/Pine Needle Necklace
Lori McCoy
2"L x 1 1/2 - 2" Diameter
\$50 Beginner/Intermediate

The student will choose from a variety of designs as the center (either picture or beads). The stitching available is the simple stitch, wrapped stitch, "V" stitch and Ti stitch. There will be beading done around the center piece (either single or double row). The piece will be finished with a cord. The stitching is not difficult, but it is a little challenging working with the small designs.

SUNDAY



SU-AM-9 8 - 2 PM
Sweetgrass Coasters (Set of 2)
Barbara McCormick
Size varies
\$65 All Levels

This basket is designed for all levels and will allow you to put your imagination to use. Sweetgrass baskets are coiled with Southern long-leaf pine needles and lashed with strips of palmetto. Techniques taught will enable students to design a variety of shapes and sizes of Sweetgrass baskets. This is an art form stemming from West Africa over 300 years ago. No water required. Scissors only.



SU-AM-11 8 - 12 PM
Lazy Susan
Mary Price
4.5"H x 11" Diameter
\$62 Beginner/Intermediate

Beginning on a 10-inch round Lazy Susan base, students will master the fundamental over-under start-stop weave, complemented by a rickrack overlay design, and finished with a simple lashed rim. A variety of dyed reed colors will be offered during the class. Take this class for a spin – you won't regret it! Please bring a small awl to class.



SU-AM-10 8 - 12 PM
Kitten
Judy Wobbleton
6"H w/handles x 7" Diameter
\$52 Beginner/Intermediate

This basket is all about shaping and experiencing shapes unique to each weaver. Student will learn an easy technique in creating a cat head shape creating little ears (feet). Weaving includes the traditional over under technique and accenting with color. Basket is finished with side handles.



SU-AM-12 8 - 12 PM
First Rib
Pam Milat
5"H w/handles x 5"L x 5"W
\$55 Beginner/Intermediate

A delicate little 5" round basket that is perfect for those who have never tried a rib basket. Students will weave a God's Eye with dyed reed, insert pre-prepared primary spokes, change to natural for a "smiley" accent, prepare and insert the secondary spokes, then finish their basket with the initial color. Emphasis will be on preparing spokes shaping and turnbacks. Color choices at class time.

Tools needed: Red handled scarfer and board, awl.

SUNDAY



SU-AM-13 8 - 12 PM
SunRise Earrings
Judy Lindsey
\$65 Beginner/Intermediate

The students will be using 8mm round beads along with 18-gauge copper wire and weaving with a 24-gauge copper wire. They will be learning how to use flush cutters, chain nose pliers, six step pliers and using a ruler.

All materials and tools will be furnished by the instructor. If students have their own tools and would like to use them that is fine.



SU-AM-14 8 - 12 PM
Pine Needle Fish
Pamela Philpott
6-7" L
\$55 All Levels

This is a great beginner project that can be completed in 4 - 6 hours and is a great way to learn the basics of coiling. Weavers will be provided materials to do a second project on their own. Participants will learn to cover a plastic ring with the double buttonhole stitch which will provide the base for the fisheye. Wrapping the coil and basic single spiral stitch will be taught to complete the fish. Participants will have options of thread color and beads to individualize their fish.



SU-AM-15 8 - 12 PM
Lacie
Cheryl Thomas
4"H x 10"L x 8"W
\$40 Beginner/Intermediate

Lacie is woven on a wood base. Techniques include twining, paired twining and triple twine. The lashing is done with a running stitch.



SU-AM-16 8 - 12 PM
Hallie's Happiness
Peggy Adelman
7.5"H x 7"L x 6"W
\$55 All Levels

This fun basket has a reed filled base. The sides are woven with several different sizes and colors of reed. There is a 6" insert swing handle set into the top of the basket. There is an X pattern applied once the basket is complete.

Upper South Carolina Basketmakers Guild

Weave-In Committee, 2026

Coordinators	Debbie Wilson	artbasgo@gmail.com
Hotel Liaison	Denise Gillam	upperscbasketmakers@gmail.com
Teacher Liaison	Judy Brooks	jdbooks0226@gmail.com
Brochure	Debbie Wilson	artbasgo@gmail.com
	Julie Honchar	jfhonchar@yahoo.com
	Judy Brooks	
Registration	Denise Gillam	upperscbasketmakers@gmail.com
Marketplace	Gary Wells	gwells_1@att.net
Student/Teacher Name Tags	Pati English	basketsmyspecialty@yahoo.com
Vendor Liaison	Martha White	mmhwhite@yahoo.com
Raffle Committee	Julie Honchar	jfhonchar@yahoo.com
	Deborah Hill	
Publicity	Michele Hartwell	micheleflgarden@gmail.com
Website	Julie Honchar	jfhonchar@yahoo.com
Table Signs	Pam Givens	pcg864@gmail.com
Facility Wrap Up	Gary Wells	gwells_@att.net

THE FOLLOWING IS FOR THOSE NOT REGISTERING ONLINE.

IF POSSIBLE HAVE A FRIEND HELP YOU TO REGISTER ONLINE.

- Your registration form and registration fee must be **received and in our hands by November 1, 2025**. Any registration received after this date will be assigned in the order that it is received and as space allows.
- Complete the registration form, typing or printing clearly. Indicate the class code (day and class number) plus the teacher's last name for each class choice. Example: F-PM-1 Atkinson. **If you want two classes on the same day, list them under each other (see registration form).**
- List classes in order of preference. Include up to four choices for each day you plan to attend. Do not list any classes you are not willing to take. Making only one choice will not guarantee you a space in that class.
- When selecting your baskets, please consider the skill level, size of basket, time allowed, and skills to be learned. Use the guidelines provided for class skill levels listed in the Weave-In Information section. Please check the project sizes carefully before making your choices. Projects can be either much larger or much smaller than they appear in the photographs.
- **Registration Fee: \$99 for Students. Please include a self-addressed, stamped, 4" x 9" envelope, along with your registration form and registration fee if you are registering by mail and not on line. Do NOT include class fees at this time.** They will be determined when you receive your class assignments.
- Registration does not guarantee placement in requested classes. Some classes may fill, others may be cancelled due to insufficient enrollment.
- If you cancel from a specific class or the entire convention, your request must be sent in writing and received by November 9, 2025. A \$25 processing fee will be deducted from all refunds. No refunds will be issued after November **10, 2025**, but you will receive your class kits. Participants must make arrangements to pick up kits at the convention. Send cancellation requests to: Denise Gillam, 202 Middle Mountain Road, Pickens, SC 29671 or email: upperscbasketmakers@gmail.com.

VENDORS

K-n-K Creations – Kim and Karen Maugans
Steve Gillam
Lori McCoy
Pam Milat
Mary Price
Custom Bases - Dennis White

Listed are vendors hours. However, vendors at their discretion may change these hours.

Friday	8:00 a.m. – 9:00 p.m.
Saturday	8:00 a.m. – 8:00 p.m.
Sunday	8:00 a.m. – 11:00 a.m.

Open Weaving

Tables will be available for casual “open weaving” when you are not in class

Instructors

Peggy Adelman	Greensboro, NC	Adelman.peggy@gmail.com
Candy & Dave Barnes	Shepherdstown, WV	bentharpoon@comcast.net
Susan Baxter	Penn Yan, NY	colorfulchaaosstudio@gmail.com
Jane McCall Brinkman	Dandridge, TN	Jbrinkman97@gmail.com
JoAnn Kelly Catsos	Halcott Center, NY	joannkellycatsos@gmail.com
Pati English	Seneca, SC	basketsmyspecialty@yahoo.com
Judy Lindsey	Campobello, SC	dgvjm2@gmail.com
Peggy McCarson	Gibsonton, FL	mccarsonp@gmail.com
Barbara McCormick	McClellanville, SC	basketsweetgrass@aol.com
Lori McCoy	Holly Ridge, NC	Loram18@aol.com
Karen Maugans	Waynesboro, VA	knkcreations@newhopetel.net
Kim Maugans	Waynesboro, VA	knkcreations@newhopetel.net
Pam Milat	Southport, NC	mspam_gs@yahoo.com
Becki Newsome	Swansboro, NC	Basketweaver502@gmail.com
Pam Philpott	Swansboro, NC	pamela.philpott52@gmail.com
Mary Price	Mesa, AZ	sunsetridgebasketry@gmail.com
Cheryl Thomas	Linden, NC	bendintheriverbaskets@gmail.com
Jamie VanOekel	Booneville, MS	upsetbasket@gmail.com
Bridget VanRemortel	Bakersville, NC	Bridgetscot15@gmail.com
Judy Wobbleton	Williamston, NC	jklwobbleton@gamil.com

Skill Levels

Beginner	Weaver has little or no experience in basic weaving.
Beginner/Intermediate	Weaver is still learning with some basket experience in the material and technique of the basket offered.
Intermediate/Advanced	Weaver is very comfortable with all techniques and materials in the basket offered.
Advanced Weaver	Weaver is experienced and wants to explore, experiment and develop skills using alternate fibers and varying creative methods.
All Levels	All weavers should be able to complete the basket offered.

Schedule

Friday, January 30

Registration	7:00 am – 5:00 pm
Classes	8:00 am – 10:00 pm
Lunch Buffet	12:00 – 1:00 pm (included in registration)
Raffle Display	11:00 am – 9:00 pm (accepting raffle items all day)
Vendors	8:00 am – 8:00 pm — times at each vendor's discretion

Saturday, January 31

Registration	7:00 am – 5:00 pm
Classes	8:00 am – 5:00 pm
Lunch Buffet	12:00 – 1:00 pm (included in registration fee)
Vendors	8:00 am – 8:00 pm — times at each vendor's discretion
Raffle Display	8:00 am – 5:00 pm
Marketplace	7:00 – 8:00 pm
Raffle	Drawing 8:00 pm

Sunday, February 1

Classes	8:00 am – 2:00 pm
Vendors	8:00 am – 11:00 am — times at each vendor's discretion

Accommodations/Reservations

Our Weave-In 2026 will be held at the Embassy Suites, Greenville Golf Resort & Conference Center, at 670 Verdae Blvd, Greenville, SC 29607.

For Reservations

Call In: Please call 800-218-8712 and ask for the Upper SC Basketmakers group rate at \$155.00 plus tax.

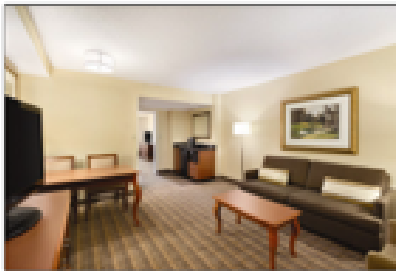
[Click to make reservations](#)

The deadline for this special rate is December 30, 2025.



Location

Conveniently located off I-385 and I-85 at 670 Verdae Blvd, Greenville, SC
Within minutes to Greenridge Shopping Center, Haywood Mall, Frankie's Fun Park, Regal Movie Theatre, Family Restaurants such as Olive Garden, Tropical Grill's, Cheddar's, etc.

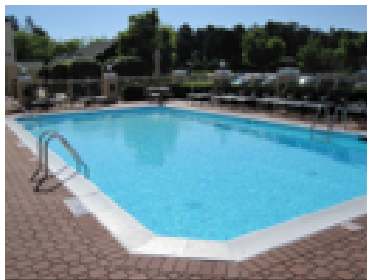
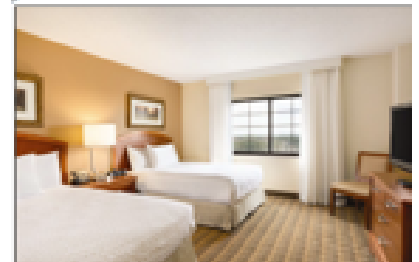


Accommodations

Two-room Suites
Private bedroom with one King size bed or two double beds
Separate living room with sofa bed
Wet bar with microwave, coffee maker and refrigerator
Two telephones and two remote controlled TV's

Dining and Entertainment

Café Verdae Featuring American Cuisine
The 19th Green, a piano bar located in the atrium garden |
Complimentary Cooked-to-order breakfast each morning
Complimentary evening Manager's Reception featuring your favorite beverages and snacks



Services

Complimentary Transportation to/from Greenville Spartanburg Airport
Ample Complimentary Parking

Recreation and Services

The Preserve at Verdae Golf Club – 18 Hole Championship golf course
Tennis – 4 lighted hard-surface tennis courts
Pools & Fitness – Indoor & Outdoor Swimming pools, whirlpool, and exercise room equipped with treadmills, elliptical machines, etc.

Reservations

Call In: Please call 800-218-8712 and ask for the Upper SC Basket Maker's group rate - \$155.00 plus tax.

Online: Please use this click on the link to make reservations:

[Hotel Reservations](#)

Directions

Directions from **Charlotte, NC** (about hour and half): I-85 South to Spartanburg, SC, Take exit 48 B for US-276 W Toward Greenville, Merge onto US-276 N Laurens Rd, Turn Right onto Verdae Blvd, Hotel on the Right
Directions from **Atlanta, GA** (about two and half hours): I-75N/I-85N toward Greenville, SC, Merge onto I-85N, Take exit 48 B for US-276 W Toward Greenville, Merge onto US-276 N Laurens Rd, Turn Right onto Verdae Blvd, Hotel on the Right

Weave-In 2026 Registration
Upper S. C. Basketmakers Guild, Greenville, S. C.
January 30, 2026 – February 1, 2026

Name _____

Address _____

City _____ State _____ Zip _____

E-mail _____

Daytime Phone _____ Evening Phone _____

Class Choices:

List your choices by class code number and instructor's last name (*example: F-PM-1 Atkinson*). List classes in order of preference for each day you plan to attend. If you want two classes on Friday, list them under each other.

Note: Please be sure you check the project sizes carefully before making your choices. Projects can in actuality be either much larger or much smaller than they appear in the photograph.

Friday	Saturday	Sunday
1 st choice _____ _____	1. _____	1. _____
2 nd choice _____ _____	2. _____	2. _____
3 rd choice _____ _____	3. _____	3. _____
4 th choice _____ _____	4. _____	4. _____

Raffle Donations: ☐ I will bring a raffle item.

Submitting Your Registration:

DO NOT SEND CLASS FEES AT THIS TIME, ONLY THE REGISTRATION FEE.

Mail the following items to: Weave-In 2026, Denise Gillam, 202 Middle Mountain Rd., Pickens, SC 29671

- Registration form (make a copy for your records)
- Registration fee: **\$99.00** Make check payable to: Upper SC Basketmakers Guild
- Stamped, self-addressed 4" x 9" envelope

Deadline:

Your registration must be received no later than **November 1, 2025.**

Cancellations:

Cancellations for a specific class or the entire convention must be received in writing no later than **November 9, 2025**. A \$25 processing fee will be deducted from all refunds. No refunds will be issued after **November 10, 2025**. Participants must make arrangements to pick up their kits. Send cancellation requests in writing to Denise Gillam, 202 Middle Mountain Rd., Pickens, SC 29671

Questions?

Contact: Denise at 864-483-2551(evenings No later than 9 pm), or email Denise at upperscbasketmakers@gmail.com

