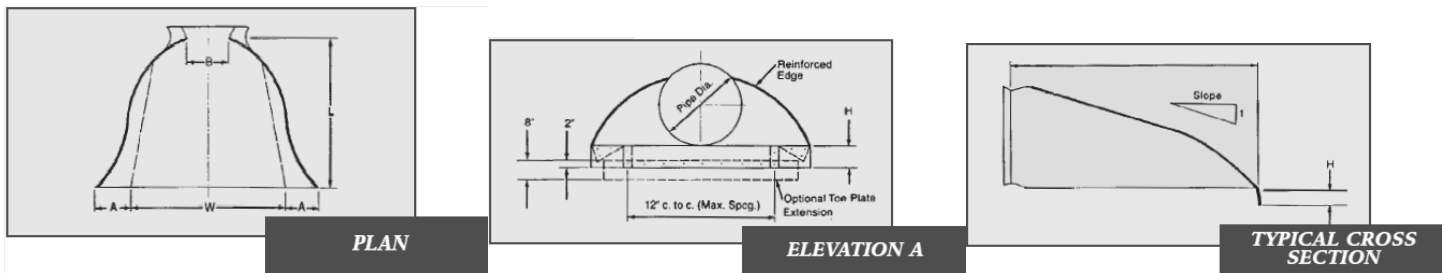


Galvanized Steel End Sections For Round Pipe



Lane's galvanized steel end sections provide a practical, economical and attractive end treatment for culverts. Our prefabricated, flared design is hydraulically efficient, reduces soil erosion and easily blends into the finished slope.

The lightweight, flexible metal construction of Lane's end sections are made to fit culvert inlets and outlets of all sizes. They can be used with either corrugated metal pipe or HDPE pipe.



| Dia. | Gauge | Weight | A | B | H | L | W | Slope |
|------|-------|--------|----|----|----|----|-----|-------|
| 12" | 16 | 27 | 6 | 6 | 6 | 21 | 24 | 2-1/2 |
| 15" | 16 | 37 | 7 | 8 | 6 | 26 | 30 | 2-1/2 |
| 18" | 16 | 49 | 8 | 10 | 6 | 31 | 36 | 2-1/2 |
| 21" | 16 | 55 | 9 | 12 | 6 | 36 | 42 | 2-1/2 |
| 24" | 16 | 74 | 10 | 13 | 6 | 41 | 48 | 2-1/2 |
| 30" | 14 | 128 | 12 | 16 | 8 | 51 | 60 | 2-1/2 |
| 36" | 14 | 184 | 14 | 19 | 9 | 60 | 72 | 2-1/2 |
| 42" | 12 | 320 | 16 | 22 | 11 | 69 | 84 | 2-1/2 |
| 48" | 12 | 375 | 18 | 27 | 12 | 78 | 90 | 2-1/4 |
| 54" | 12 | 440 | 18 | 30 | 12 | 84 | 102 | 2-1/4 |
| 60" | 12/10 | 610 | 18 | 33 | 12 | 87 | 114 | 2 |
| 66" | 12/10 | 697 | 18 | 36 | 12 | 87 | 120 | 2 |
| 72" | 12/10 | 720 | 18 | 39 | 12 | 87 | 126 | 2 |
| 78" | 12/10 | 810 | 18 | 42 | 12 | 87 | 132 | 1-1/2 |
| 84" | 12/10 | 850 | 18 | 45 | 12 | 87 | 138 | 1-1/2 |
| 90" | 12/10 | 910 | 24 | 37 | 12 | 87 | 144 | 1-1/2 |
| 96" | 12/10 | 985 | 25 | 35 | 12 | 87 | 150 | 1-1/2 |

- All dimensions are in inches plus or minus standard shop tolerances.
- End sections are manufactured to AASHTO specifications.
- End sections and larger are provided with galvanized silo rod and lug connectors (Type 2)
- For 60" and larger diameter pipe end sections, reinforced edges to be supplemented with hot dipped galvanized stiffener angles.
- Multiple panel end sections have lap seams tightly joined by rivets or bolts. Corner plate and toe plate to be same gauge as end section.
- Fill slope need not match end section slope. Fill can be shaped to fit.

