

GENERAL NOTES:
 1. FOR DEMOLITION OF EXISTING LIGHT POLES AND FRANKLIN DR. LIGHTING IMPROVEMENTS PLANS, SHEETS C0.1 LP THRU C1.8 LP.
 2. ALL TREES SHOWN ON PLANS ARE TO REMAIN UNLESS OTHERWISE NOTED.

GENERAL NOTES:
 1. FOR DEMOLITION OF EXISTING LIGHT POLES AND LAYOUT OF PROPOSED LIGHT POLES, REF. BENJAMIN FRANKLIN DR. LIGHTING IMPROVEMENTS PLANS, SHEET C0.1 LP THRU C1.8 LP.
 2. ALL TREES SHOWN ON PLANS ARE TO REMAIN UNLESS OTHERWISE NOTED.



Designed by	K. Updegraff	Date	02/18
Drawn by	K. Updegraff	Date	02/17
Checked by	B. Labadie	Date	02/17
Scale	As Shown	Project No.	150000013

32724 Fruitville Road, Suite 2
 Sarasota, FL 34237
 Ph: 941.365.4771

SIDEWALK IMPROVEMENTS

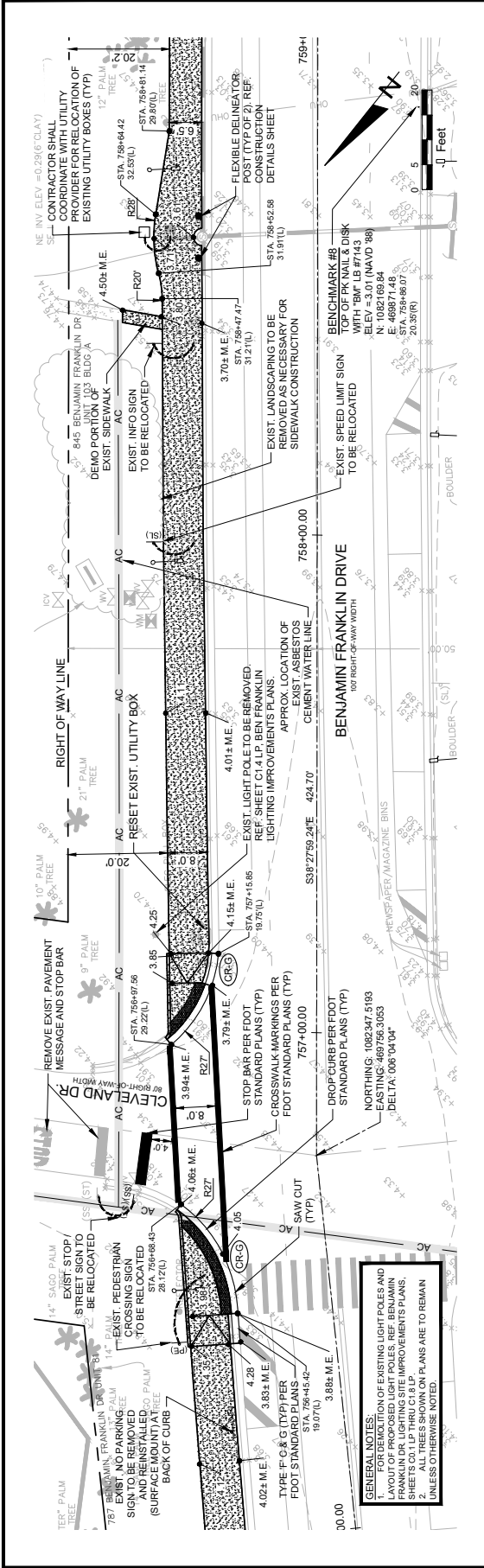
SIDEWALK PLAN - PHASE 2A
 BENJAMIN FRANKLIN DRIVE.
 STA 750+00.00 TO STA 756+00.00

Sheet No.
C1.1

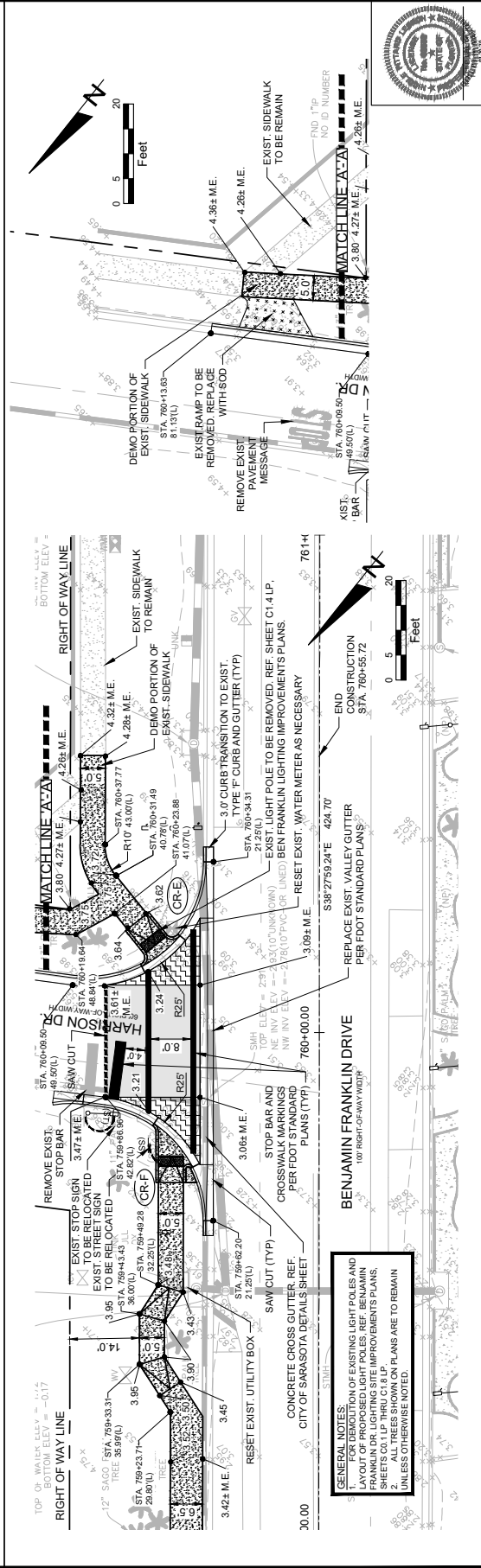
CITY OF SARASOTA, FLORIDA



www.gphinc.com



GENERAL NOTES:
 1. LOCATION OF EXISTING LIGHT POLES AND LAYOUT OF PROPOSED LIGHT POLES, REF. BENJAMIN FRANKLIN DR. LIGHTING SITE IMPROVEMENTS PLANS, SHEETS C-11P THRU C-14P.
 2. ALL LIGHT POLES ARE TO REMAIN UNLESS OTHERWISE NOTED.



GENERAL NOTES:
 1. LOCATION OF EXISTING LIGHT POLES AND LAYOUT OF PROPOSED LIGHT POLES, REF. BENJAMIN FRANKLIN DR. LIGHTING SITE IMPROVEMENTS PLANS, SHEETS C-11P THRU C-14P.
 2. ALL LIGHT POLES ARE TO REMAIN UNLESS OTHERWISE NOTED.



Sheet No.
C12

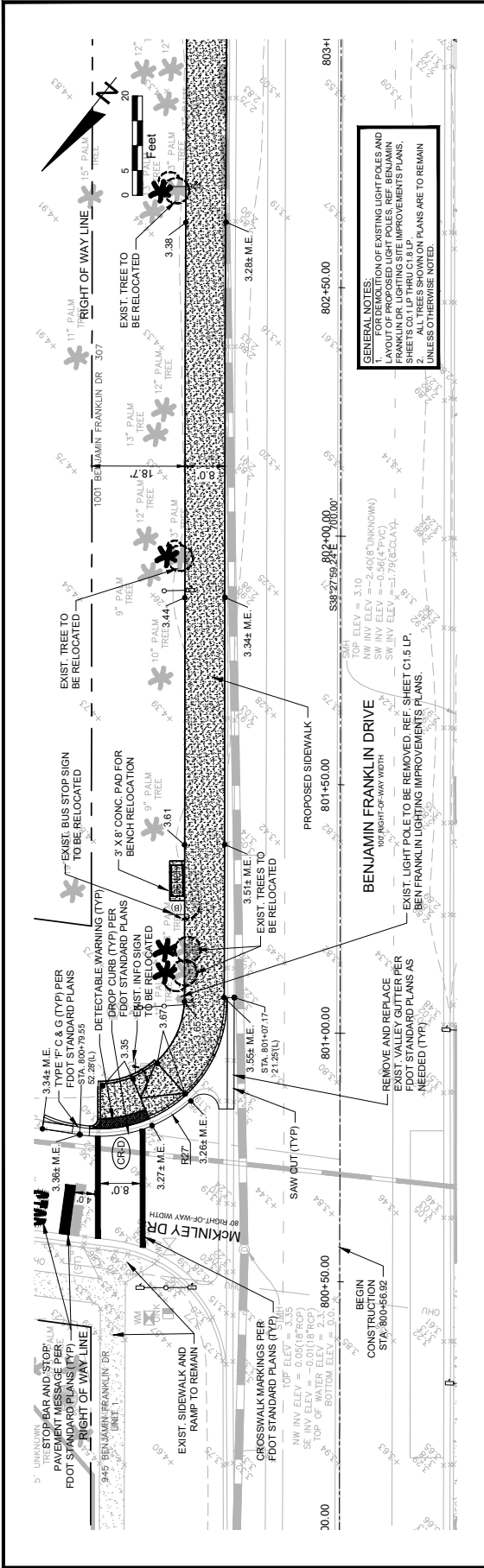
SIDEWALK PLAN - PHASE 2A
 BENJAMIN FRANKLIN DRIVE.
 STA 756+00.00 TO STA 761+00.00

SIDEWALK IMPROVEMENTS
 CITY OF SARASOTA, FLORIDA

3277A Fruitville Road, Suite 2
 Sarasota, FL 34237
 Ph: 941.365.4771



Designed by	K. Up	Date	02/18
Drawn by	K. Up	Date	02/18
Checked by	N. Labrecque	Date	02/18
Scale	As Shown		



GENERAL NOTES:
 1. FOR DEMOLITION OF EXISTING LIGHT POLES AND LAYOUT OF PROPOSED LIGHT POLES, REF. BENJAMIN FRANKLIN DR. LIGHTING SITE IMPROVEMENTS PLANS.
 2. ALL TREES SHOWN ON PLANS ARE TO REMAIN UNLESS OTHERWISE NOTED.

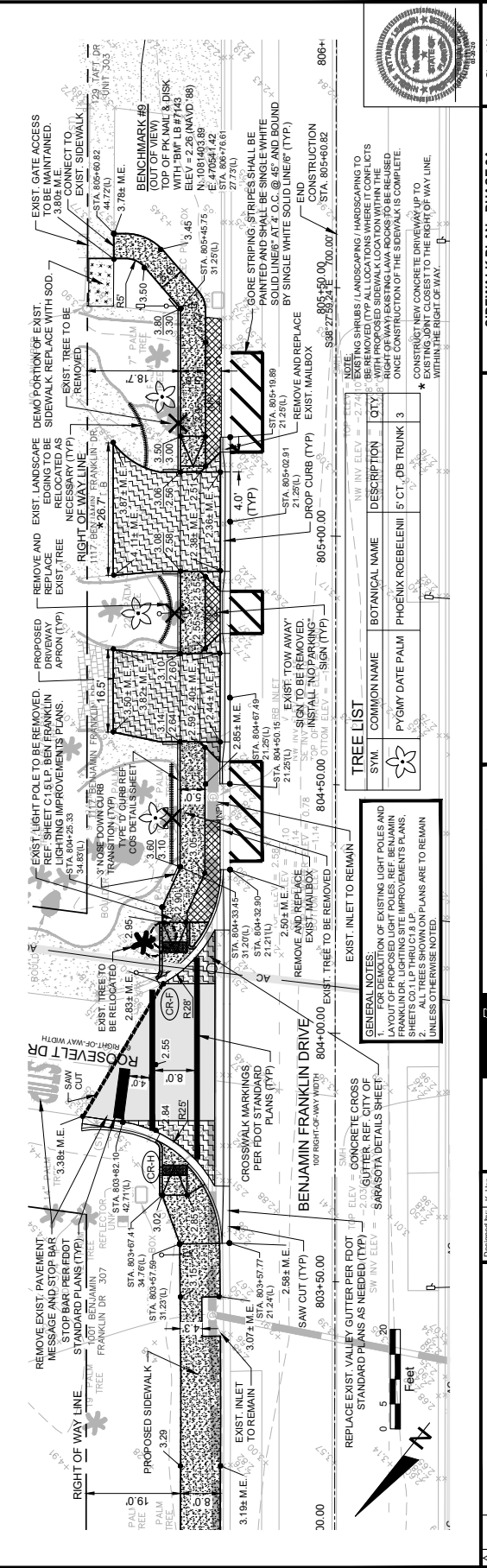
BENJAMIN FRANKLIN DRIVE
 EXIST. LIGHT POLE TO BE REMOVED. REF. SHEET C1.5 LP.
 BEN FRANKLIN LIGHTING IMPROVEMENTS PLANS.

BENJAMIN FRANKLIN DRIVE
 REMOVE AND REPLACE EXIST. VALLEY GUTTER PER EXIST. STANDARD PLANS AS NEEDED (TYP).

BENJAMIN FRANKLIN DRIVE
 EXIST. LIGHT POLE TO BE REMOVED. REF. SHEET C1.5 LP.
 BEN FRANKLIN LIGHTING IMPROVEMENTS PLANS.

BENJAMIN FRANKLIN DRIVE
 EXIST. LIGHT POLE TO BE REMOVED. REF. SHEET C1.5 LP.
 BEN FRANKLIN LIGHTING IMPROVEMENTS PLANS.

BENJAMIN FRANKLIN DRIVE
 EXIST. LIGHT POLE TO BE REMOVED. REF. SHEET C1.5 LP.
 BEN FRANKLIN LIGHTING IMPROVEMENTS PLANS.



GENERAL NOTES:
 1. FOR DEMOLITION OF EXISTING LIGHT POLES AND LAYOUT OF PROPOSED LIGHT POLES, REF. BENJAMIN FRANKLIN DR. LIGHTING SITE IMPROVEMENTS PLANS.
 2. ALL TREES SHOWN ON PLANS ARE TO REMAIN UNLESS OTHERWISE NOTED.

BENJAMIN FRANKLIN DRIVE
 EXIST. LIGHT POLE TO BE REMOVED. REF. SHEET C1.5 LP.
 BEN FRANKLIN LIGHTING IMPROVEMENTS PLANS.

BENJAMIN FRANKLIN DRIVE
 EXIST. LIGHT POLE TO BE REMOVED. REF. SHEET C1.5 LP.
 BEN FRANKLIN LIGHTING IMPROVEMENTS PLANS.

BENJAMIN FRANKLIN DRIVE
 EXIST. LIGHT POLE TO BE REMOVED. REF. SHEET C1.5 LP.
 BEN FRANKLIN LIGHTING IMPROVEMENTS PLANS.

BENJAMIN FRANKLIN DRIVE
 EXIST. LIGHT POLE TO BE REMOVED. REF. SHEET C1.5 LP.
 BEN FRANKLIN LIGHTING IMPROVEMENTS PLANS.

BENJAMIN FRANKLIN DRIVE
 EXIST. LIGHT POLE TO BE REMOVED. REF. SHEET C1.5 LP.
 BEN FRANKLIN LIGHTING IMPROVEMENTS PLANS.

TREE LIST

SYM.	COMMON NAME	BOTANICAL NAME	DESCRIPTION	QTY
(Symbol)	PYGMY DATE PALM	PHOENIX ROEBELENI	5 CT. DB TRUNK	3

GENERAL NOTES:
 1. FOR DEMOLITION OF EXISTING LIGHT POLES AND LAYOUT OF PROPOSED LIGHT POLES, REF. BENJAMIN FRANKLIN DR. LIGHTING SITE IMPROVEMENTS PLANS.
 2. ALL TREES SHOWN ON PLANS ARE TO REMAIN UNLESS OTHERWISE NOTED.

BENJAMIN FRANKLIN DRIVE
 EXIST. LIGHT POLE TO BE REMOVED. REF. SHEET C1.5 LP.
 BEN FRANKLIN LIGHTING IMPROVEMENTS PLANS.



Sheet No.
613

SIDEWALK PLAN - PHASE 2A
BENJAMIN FRANKLIN DRIVE.
 STA 800+00.00 TO STA 806+00.00

SIDEWALK IMPROVEMENTS
 CITY OF SARASOTA, FLORIDA

3277A Fruitville Road, Suite 2
 Sarasota, FL 34237
 Ph: 941.365.4771



Designed by	K. Up	Date	02/18
Drawn by	K. Up	Checked by	N. Labrecque
Scale	As Shown	Project No.	201707
Revision		Client	City of Sarasota

2017-01-19 PM 2:00:00 2017-02-18 PM 2:00:00 2017-03-18 PM 2:00:00 2017-04-18 PM 2:00:00 2017-05-18 PM 2:00:00 2017-06-18 PM 2:00:00 2017-07-18 PM 2:00:00 2017-08-18 PM 2:00:00 2017-09-18 PM 2:00:00 2017-10-18 PM 2:00:00 2017-11-18 PM 2:00:00 2017-12-18 PM 2:00:00