

TempAssure

A new way of monitoring your temperature

Operating Manual



What's in the box

- (1) *TempAssure* monitoring box with a J-type thermocouple
- (1) Thermocouple clip

Before you begin setup

Unpack your *TempAssure* monitoring box and remove all packing material. Remove cable ties securing the power cord and thermocouple lead.

Need assistance? Contact us:

information@quincylab.com
1800-482-4328



Digital Controller

Thermocouple Lead

Control Accuracy:	± 0.5°C
Thermocouple Type:	J-type Thermocouple
Probe Length:	6 inches
Power Cord:	5 feet
Operating Environment:	32 to 122°F (0°C to 50°C)

Specification:

Size:	6 x 3.2 x 1.92 inches
Material:	ABS Thermoplastic
Power Supply:	100 to 240VAC, 50/60 Hz.
Display:	LED - red
Temp. Range:	Full range of J-type Thermocouple (32°F to 600°F)

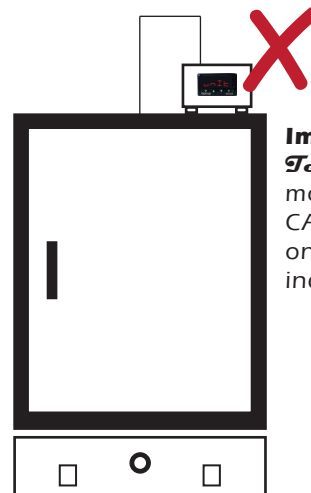
TA-1020HT	High-Temp (HT) : Calibrated @ 300°F, Suitable for 200-600°F
TA-1020LT	Low-Temp (LT): Calibrated @ 98°F, Suitable for Amb-225°F

Before Use:

⚠ DO NOT place your *TempAssure* monitoring box on the top surface of any oven or incubator, as the heat generated may adversely affect the integrity of the controller and the box.

⚠ Your *TempAssure* monitoring box is factory-calibrated with NIST-certified instruments. We recommend to verify the controller's calibration values annually with a professional calibration company.

For more information on calibration offset, see 'Calibration' on page 3.



Important!
TempAssure monitoring box CANNOT be placed on the top surface of incubators or ovens.

How to set up your *TempAssure* box

1. Uncoil the thermocouple lead to the desired length and insert the bulb inside your oven or incubator.
2. Place the thermocouple at the center of the unit's chamber using the clip provided (as shown to the right).
3. Place your monitoring box on a flat surface in close proximity to the unit.
4. Power ON your *TempAssure* box using the switch located on the back of the box.
5. Select the desired temperature units (see 'How to set temperature units' on page 3).
6. Set one of three optional alarms (see 'Setting optional alarm on page 3).

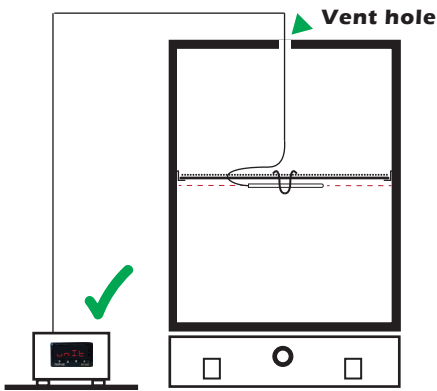


Insert the thermocouple bulb inside the unit, placing it on the clip in the largest hole. Gently push the clip inward and place it on the underside of the shelf

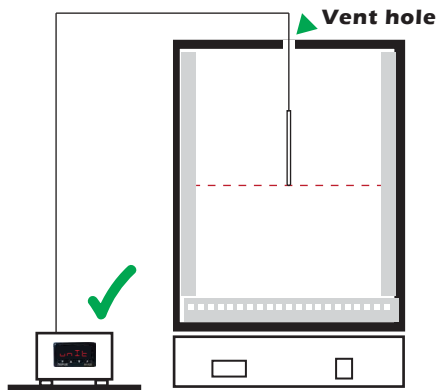
All done! Your *TempAssure* box is now ready to monitor the temperature of your oven or incubator.

Thermocouple Placement

Incubator Series



Use the single vent hole to place the thermocouple inside the incubator and mount it to the shelf using the thermocouple clip.

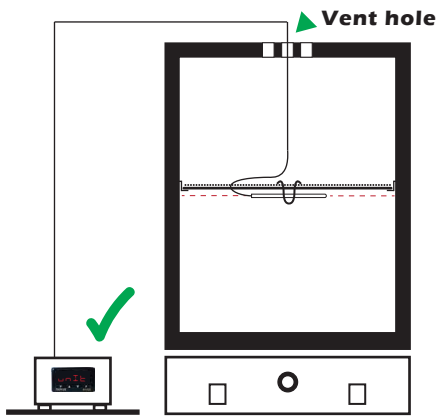


For an air-forced incubator, AE series, use the single access porthole to place the thermocouple inside the incubator.

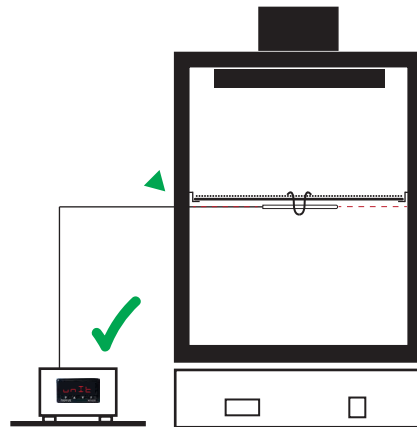
General Guidelines

- Use the recommended vent holes on the unit, except for models with motors.
 - We recommend placing the probe at the center of the chamber for optimal temperature monitoring.
- ⚠️ Avoid placing the thermocouple bulb against walls or on contents.

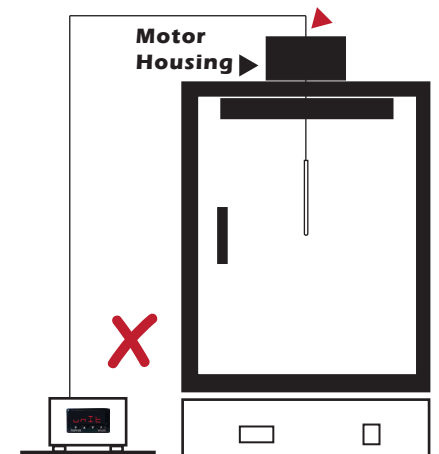
Lab Oven Series



For (GC) series ovens, use any of the three vent holes to insert the thermocouple inside the oven and use the oven shelf to mount the thermocouple with the provided clip.



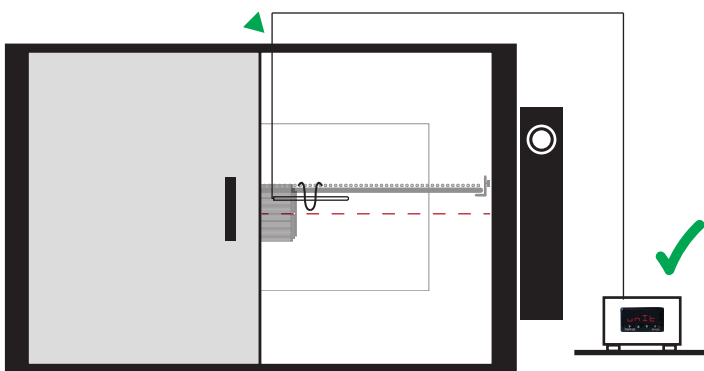
For ovens with fans (AF series), insert the thermocouple through the handle side of the door and use the oven shelf to mount the thermocouple with the provided clip.



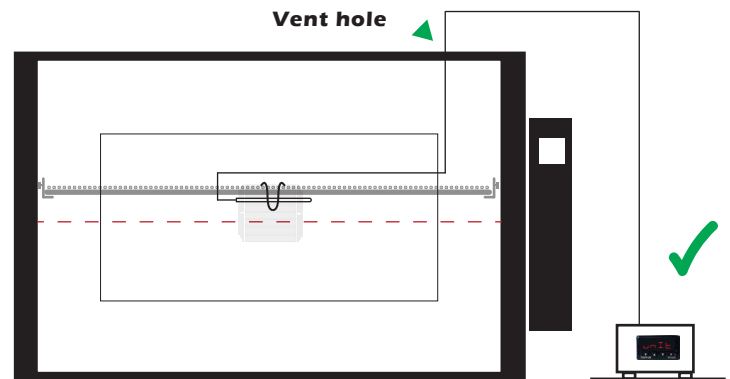
For ovens with fans (AF series), do not place the thermocouple bulb through the motor housing to prevent damage to the oven.

⚠️ Seal the door with high-temp tape (not provided) if necessary to manage thermocouple lead placement.

Bench Ovens Series



You can place the thermocouple through the oven door, use the oven shelf to mount the thermocouple with the provided clip at the center of the chamber, and then close the door once it's positioned.



The thermocouple can be placed through the vent hole located on top of the oven. Use the oven shelf to mount the thermocouple with the provided clip at the center of the chamber.

Controller set-up

Your *TempAssure* monitor box controller has been factory-programmed to operate solely as a monitor display with no controlling functions. While various settings are visible, we highly recommend **ONLY** adjusting the **unit** and **alarm** functions on your monitoring box controller.

- 1. Temperature units** - Allows you to select between degrees celsius or fahrenheit.
- 2. Alarm Option** - You can set the ALARM to notify you in the event an alarm condition exists.



- P** Menu Selection **▲** Increase
- F** Previous Selection **▼** Decrease

1. How to set temperature unit (UNIT)

Select your desired temperature unit by doing the following:

- Press **P** 1 time to see UNIT
- Press **▲** or **▼** to choose °F or °C
- Press **P** 2 times to return to return to the temperature

Default is set to degrees °F.

2. Setting Optional Alarm (FUR)

Select an alarm option to trigger the "ALM" indicator at a low, high, or differential points in relation to the process value (PV).

Default is set to OFF.

LO - Alarm of absolute minimum value. Triggers when the value of measured process value is below the value set for alarm setpoint on SPA1.

- Press **P** 2 times to see FUR
- Press **▼** or **▲** and choose alarm option LO
- Press **P** 1 time to see SPA1
- Press **▼** or **▲** to input alarm value
- Press **P** 1 time to return to main menu

HI - Alarm of absolute maximum value. Triggers when the value of measured process value is above the value set for alarm setpoint on SPA1.

- Press **P** 2 times to see FUR
- Press **▼** or **▲** and choose alarm option HI
- Press **P** 1 time to see SPA1
- Press **▼** or **▲** to input alarm value
- Press **P** 1 time to return to main menu

dIF - Alarm of differential value. In this function the parameter **SPA1** represents the deviation of process value in relation to the SP of control.



- Press **P** 2 times to see FUR
- Press **▼** or **▲** and choose alarm option dIF
- Press **P** 1 time to see SPA1
- Press **▼** or **▲** to input alarm value
- Press **P** 1 time to return to main menu

Calibration

Your *TempAssure* monitoring box is factory-calibrated with NIST-certified instruments. When calibrating the box, ensure to calibrate it using NIST-certified instruments for accuracy and reliability.

To access the calibration parameter (OFFS)

1. Press and hold **P** for about 3 seconds to see PASS
2. Input the factory-set passcode of 1111 using **▲** key.
3. Press and hold **P** for about 3 seconds to see TYPE
3. Press **P** three times (3X) to display OFFS
3. Use **▲** or **▼** to input temperature difference
4. Press and hold **P** for 3 seconds to return

⚠ When conducting the calibration offset, adjust the existing value in the OFFS parameter by either adding or subtracting from it.