

# Quick Start Guide



## Analog Lab Oven

Models: 10, 20, 30, 40 GC/AF

### Content

- (1) Lab Oven
- (2) Nickel-Plated Wire Shelves
- (4) Wire Shelf Supports

### For GC models only

- (1) Glass Thermometer
- (1) Rubber Grommet

### Cautions

- ⚠ **Heavy Object** - Use two (2) persons when lifting or moving the oven.
- ⚠ Only use a grounded outlet rated for your unit's electrical requirement.
- ⚠ Do NOT place volatile or combustible materials inside or in close proximity to your Lab Oven.

### Before you power the unit ON

- Ensure you have removed all the packaging items from the oven before use.

### Setting up the unit

- Place oven on a flat, solid surface.
  - Maintain a minimum of 4 inches of separation around the units walls and 18 inches above the unit.
  - Plug the oven into a grounded outlet for your unit's rated voltage. Isolate your oven to a separate, appropriately rated circuit or breaker.
- ⚠ The electrical specifications can be found on the label located at the back of the oven.

For full manuals and guides, please visit:  
<https://quincylab.com/lab-ovens-2>

For general certifications, please visit:  
<https://quincylab.com/certifications>

-OR-

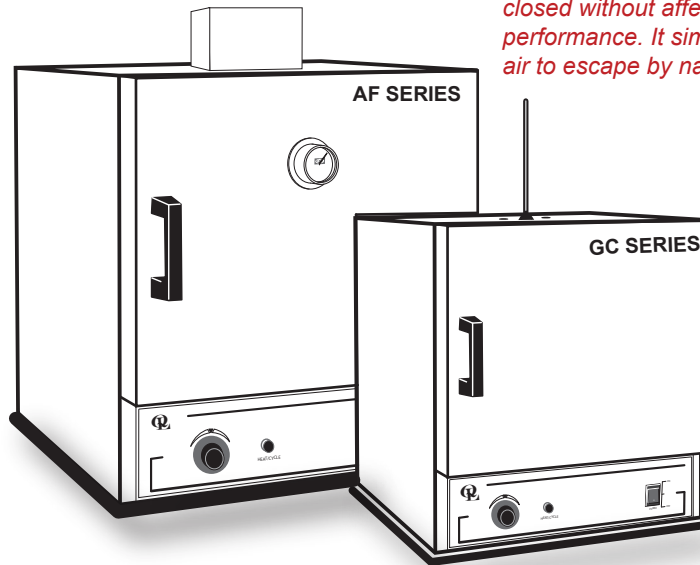
Scan the QR code to access the full operating manual and guides page



### Contact

**Quincy Lab Support:**  
800-482-4328 | [information@quincylab.com](mailto:information@quincylab.com)

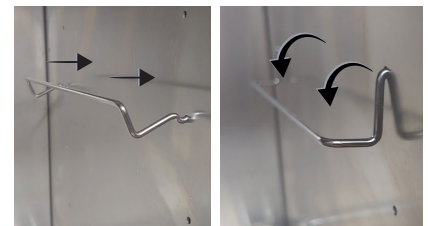
⚠ *The top hole(s) can be left open or closed without affecting the unit's performance. It simply allows warm/moist air to escape by natural convection.*



### Quick start-up

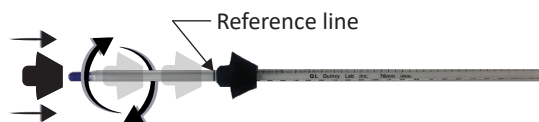
- 1 Insert the oven's shelf supports (as shown to the right) at the desired height and place the shelf on top.

⚠ *For best processing performance have the shelves placed at the center of the oven.*



- 2 Prepare the thermometer assembly by inserting the glass thermometer inside the rubber grommet and placing it on top of the unit.

⚠ *Avoid forcing the glass thermometer into the grommet. This can cause the thermometer to shatter, risking the possibility of injury. If needed, use a little dish soap for easier insertion.*



- 3 Press the red power button in the front of the unit (UP) to power ON the oven.
- 4 Turn the thermostat counterclockwise to a number (10GC/AF) or temperature (other models) to start heating. For 10GC/AF, monitor the thermometer, and once the desired temperature is reached, turn the dial slightly back until the heat cycle shuts off to hold the temperature displayed on the thermometer.

⚠ *Dial temperatures are approximate. Small adjustments may be needed for precision. Use the provided thermometer for accuracy.*

⚠ *Before use, let the oven cycle a few times after reaching a stable temperature. Each cycle is indicated by the HEAT/CYCLE light turning ON and OFF.*