

Quick Start Guide



Digital Lab Oven

Models: 10, 20, 30, 40 GCE/AFE
Models: 10, 20, 30, 40 GCE-LT/AFE-LT

Content

- (1) Lab Oven
- (2) Nickel-Plated Wire Shelves
- (4) Wire Shelf Supports

Cautions

- ⚠ **Heavy Object** - Use two (2) persons when lifting or moving the oven.
- ⚠ Only use a grounded Outlet rated for your oven's electrical requirement.
- ⚠ Do NOT place volatile or combustible materials inside or in close proximity to your Lab Oven.

Before you power the unit ON

- Ensure you have removed all the packaging items from the oven before use.
- Ensure the fuse and the fuse holder (red) are in place and secured in the back of the oven.

Setting up the oven

- Place oven on a flat, solid surface.
 - Maintain a minimum of 4 inches of separation around the oven's walls and 18 inches above the unit.
 - Plug the oven into a grounded outlet for your unit's rated voltage. Isolate your oven to a separate, appropriately rated circuit or breaker.
- ⚠ The electrical specifications can be found on the label located at the back of the oven

For full manuals and guides, please visit:
<https://quincylab.com/lab-ovens-2>

For general certifications, please visit:
<https://quincylab.com/certifications>

-OR-

Scan the QR code to access the full operating manual and guides page



Contact

Quincy Lab Support:
800-482-4328 | information@quincylab.com



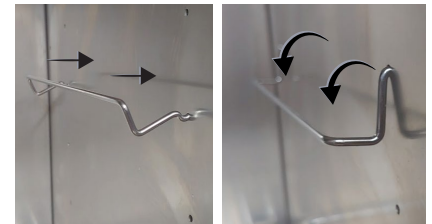
⚠ The top hole(s) can be left open or closed without affecting the unit's performance. It simply allows warm/moist air to escape by natural convection.



Quick start-up

- 1 Insert the oven's shelf supports (as shown to the right) at the desired height and place the shelf on top.

⚠ For best processing performance have the shelves placed at the center of the oven.



- 2 Press the red power button in the front of the unit (UP) to power ON the oven.
- 3 Set the desired operating temperature on the controller.

⚠ Upon powering on, the oven will automatically heat to the factory preset temperature. Follow the steps below to adjust the setpoint temperature.

To change the set-point (SP)

- Press **P** button once (1X) to see SP (setpoint)
Press **▲** or **▼** to change temperature value
Press **P** 4 times (4X) to exit the menu



⚠ The lights on the left hand side of the controller **OUT** and **RUN** indicate normal operation. A slow flashing OUT light indicates normal operation.

⚠ Allow a minimum of 20 minutes for the oven's temperature to stabilize before making any subsequent set-point changes.

